

2002

A M E R I C A N • D R E A M<sup>®</sup>

from American Coach



# D I M E N S I O N S & C A P A C I T I E S

## *Weights (pounds)*

	40-Q	40-M	40-K	40-H	40-U
GVWR (lbs.)(1)	33,700	33,700	33,700	33,700	33,700
Front GAWR (lbs.)(2)	13,700	13,700	13,700	13,700	13,700
Rear GAWR (lbs.)(2)	20,000	20,000	20,000	20,000	20,000
Base Weight (lbs.)(3)	27,400	27,550	27,500	27,500	27,100
GCWR (lbs.)(4)	43,700	43,700	43,700	43,700	43,700
Hitch Rating Weight (lbs.)*	10,000	10,000	10,000	10,000	10,000
Tongue Weight (lbs.)	1,000	1,000	1,000	1,000	1,000

## *Tank & Liquid Capacities (gallons)*

	40-Q	40-M	40-K	40-H	40-U
Fresh Water Holding Tank (gal.)	95	95	95	95	95
Grey Water Holding Tank (gal.)	60	60	60	60	60
Black Water Holding Tank (gal.)	40	40	40	40	40
Appliance LPG Tank (WC) (7)	40.3	40.3	40.3	40.3	40.3
Water Heater Tank (gal.)	10	10	10	10	10
Fuel Capacity (gal.)	150	150	150	150	150

## *Measurements*

	40-Q	40-M	40-K	40-H	40-U
Wheel Base	266"	266"	266"	266"	266"
Overall Length (5)	40'	40'	40'	40'	40'
Overall Height w/AC	12' 2"	12' 2"	12' 2"	12' 2"	12' 2"
Overall Width (max) (6)	101.5"	101.5"	101.5"	101.5"	101.5"
Interior Height (max)	82"	82"	82"	82"	82"
Interior Width (max)	96"	96"	96"	96"	96"

## *Chassis*

Frame	Spartan® Mountain Master GT Stacked Rail
Engine	Cummins® C.8.9L/370 hp ISL Diesel
Torque	1200 @ 1300 RPM
Transmission	Allison® 3000 MH, 6-Speed w/Electronic Shifter
Alternator Amps	200 Amp Leece Neville
Tires	295/80 R22.5LRH Low Profile Highway Radial

Liquid Weight Reference: Water (gal./ltrs.)=(8.3 lbs./3.8 kgs.), Fuel (gal./ltrs.)=(7.1 lbs./3.2 kgs.), LPG (gal./ltrs.)=(4.5 lbs./2.0 kgs.)  
Metric Conversion: Multiply pounds x 0.453 to obtain kilograms, Multiply gallons x 3.785 to obtain liters

- (1) GVWR (Gross Vehicle Weight Rating): Means the maximum permissible loading weight of the motor home. GVWR is equal to or greater than the sum of the unloaded vehicle weight plus the net carrying capacity.
- (2) GAWR (Gross Axle Weight Rating): Means the maximum permissible loaded weight a specific axle is designed to carry.
- (3) BW (Base Weight): Means the weight of the motor home without fuel, options, water, cargo or passengers.
- (4) GCWR (Gross Combined Weight Rating): Means the value specified by the motor home manufacturer as the maximum allowable loaded weight of this motor home with its towed vehicle. Towing and braking capacity may differ. Refer to Fleetwood and chassis manufacturer manuals for complete information.
- (5) Length taken from front bumper to rear bumper (excludes accessories).
- (6) Excludes safety equipment and awnings.
- (7) Tank Manufacturer's listed water capacity (WC). Actual LPG capacity is 80% of water listed as required by the safety code.

\* The chassis manufacturer recommends the installation of a supplemental brake control system to activate the brakes on the vehicle or trailer you are towing.

**IMPORTANT-PLEASE READ:** Product information, photography and illustrations included in this publication were as accurate as possible at the time of printing. For further product information and changes, please visit our website at [www.fleetwoodrv.com](http://www.fleetwoodrv.com) or contact your local Fleetwood dealer. Prices, materials, design and specifications are subject to change without notice. All weights, fuel, liquid capacities and dimensions are approximate. Fleetwood has designed its recreational vehicles to provide a variety of uses for its customers. Each vehicle features optimal seating, sleeping, storage and fluid capacities. The user is responsible for selecting the proper combination of loads (i.e. occupants, equipment, fluids, cargo, etc.) to ensure that the vehicle's capacities are not exceeded.



Frosted Eggshell



English Lilac



Nautical



Forest Sage

# S T A N D A R D & O P T I O N A L F E A T U R E S

## Automotive

- S Engine - Cummins® C.8.9 Liter, 370 hp ISL Diesel
- S Jacobs Engine Compression Brake
- S Transmission - Allison® 3000 MH, 6-Speed Automatic
- S Spartan® Mountain Master GT Chassis
- S Independent Front Suspension
- S Bus Style 50" Large Windshield
- S Single Motor Windshield Wiper System
- S Intermittent Wipers
- S Tilt/Telescoping Steering Wheel
- S Double Swivel Visors
- S Back Lighted Instrument Panel
- S Driver/Passenger Wood Drink Tray
- S (4) 6V House Batteries on Slide-out Tray, 440 Amp
- S (2) 12V Chassis Batteries - 2000 CCA
- S Electronic Battery Control Center
- S Undercoating
- S (4) Cast Aluminum Wheels
- S Battery Disconnect Switches
- S Denso Climate Control System
- S Trailer Hitch Receiver 10,000 Lb. Capacity\*
- S Cruise Control
- S Remote Auxiliary Start System
- S Auxiliary Fog Lights
- S Michelin® Radial Tires
- S Tire Pressure Check Gauge
- S 3-Point Leveling Jacks
- S Power Driver Window
- S Steel Surface on Front Bulkhead/Engine Frame
- S Flexsteel® Leather Driver/Passenger Seats w/Manual Lumbar/6-Way Power Driver Seat
- S Sony® Rear Vision System with Audio
- S Visteon AM/FM & CD
- S Sound Insulation in Subfloors, Front & Rear
- S CB Radio Ready
- S Chrome "Bus-Like" Heated Mirrors w/Remote Adjustment
- S Mud Flaps
- S Utility Light - Front & Rear
- S Air Horns
- S I.C.C. Light Switch
- S Driver/Passenger Map Lights
- S Anti-Lock Braking System (ABS)
- S Full Air Brakes w/Automatic Slack Adjusters
- S Air Ride Suspension w/Bilstein® Shocks
- S Stepwell Cover
- S (2) Auxiliary 12V Dash Receptacles
- S Architectural Dash with Large Analog Gauges
- S Manual Air Dump Override Switch
- 0 V.I.P. Delivery
- 0 Villa® Leather Queen Seat w/Power Lumbar & Footrest
- 0 GPS System
- 0 Road Relay System
- 0 Hand-Held CB
- 0 Central Unlock

## Structural

- S Stacked Rail Chassis Frame
- S Steel Reinforced Vacubond Sidewall, Roof & Floor Construction
- S Steel Outriggers on Chassis
- S Heated Water & Holding Tank Compartments
- S Vacubond Walls w/Smooth Exterior Skin
- S Bonded Windshield w/Frame

## Exterior

- S Fresh Water Hose
- S Dual Holding Tank San-T-Flush System
- S Full Fiberglass Front & Rear Caps
- S One-Piece Domed Fiberglass Roof
- S Fiberglass Front & Rear Quarter Panels
- S Fiberglass Wheel Trims
- S Vetrolite Exterior Side-Walls
- S Daytime Running Lights

- S 42 Gallon Floor Mounted LPG Tank
- S Tank Level Monitor
- S Exterior Convenience Light at Dump Valves
- S Exterior Graphics (4 Colors) All Paint
- S Manual Generator Slide-out
- S 50 Amp Service 120 Volt Power Cord
- S Power Single Entry Step
- S 31" Front Entry Door with Dead Bolt
- S Entry Screen Door
- S Deluxe Entry Handles
- S Exterior Flip-up Storage Doors
- S Luggage Compartment Lights
- S Porch Lights (2)
- S Protective Front Cover w/Logo
- S Docking Lights - 2 Each Front and Rear
- S Awning/Drip Rail Moldings RS/DS
- S Exterior Rinse Hose w/Soap Dispenser & Paper Towel Holder
- S Fresh Water Gravity Fill
- S 50' Air Service Line
- S Dual Pane Windows with Screens
- 0 Digital Satellite System w/Automatic Lift
- 0 Electric Awning - Girard or Care Free One Touch
- 0 Window Awnings
- 0 Two-Piece Rear Ladder
- 0 Keyless Entry
- 0 54" Compartment Slide-Out Tray
- 0 Exterior Entertainment Center
- 0 Spotlight with Remote Control
- 0 Solar Charging Panel
- 0 Rear Rockgard Mud Flap
- 0 Summit Body Block

## Appliances

- S (2) 13.5 M Low Profile Roof Air Conditioners
- S Onan® 7.5 kw Quiet Diesel Generator Manual Slide-out
- S Dual Furnaces w/Thermostat & Auto Ignition, 20M/34M BTU
- S Park Telephone Ready
- S Rigid Furnace Ducting System
- S Patio Receptacles
- S Recessed 3 Burner Range with Oven and Corian® Cover
- S Microwave/Convection Oven w/Built-in Power Range Hood w/Fan & Light
- S Water Filter
- S 24" Sony® Vega TV (Front) w/ Remote
- S 20" Sony® Vega TV (Rear) with Remote
- S VHS - VCR (Stereo)
- S Satellite Ready
- S Heart Interface® Source Manager 20 - 2000 Watt Continuous Inverter 100 Amp Converter, Intelligent Transfer Switching
- S Heart Battery Monitor
- S Multi-Point Water Pump Switching
- S Dometic® 120V/LPG Electric Side-By-Side Refrigerator w/Ice Maker
- S D.S.I. 10 Gallon Water Heater 120V/LPG
- S Smoke Detector/Alarm
- S Fire Extinguisher
- S LPG Leak Detector/Alarm
- S Carbon Monoxide Detector/Alarm
- 0 Auto Gen Start
- 0 Recessed Kitchen Aid® 2 Burner Range Cooktop with Corian® Cover
- 0 Sony® Home Theater
- 0 CD Changer
- 0 Power TV Antenna
- 0 Heart Interface® Source Manager 25 - 2500 Watt Continuous Inverter 130 Amp Converter, Intelligent Transfer Switching
- 0 Norcold® 120V/LPG Electric 4-Door Refrigerator w/Ice Maker
- 0 Washer/Dryer
- 0 DSS

## Galley

- S Corian® Sink Covers
- S Corian® Galley Top
- S Extra Large Stainless Steel Kitchen Sink, Double Bowl
- S Single Lever Galley Faucet (Moen®)
- S Ceramic Tile Floor (Diagonally Laid)
- S Solid Wood Refrigerator Door Inserts
- S Solid Wood Drawers
- S Corian® Dinette Table with Extension & 4 Chairs
- S Moen® Hand Held Shower Head
- 0 Nuheat Heated Tile Floor

## Bath

- S Corian® Lavy Top with Corian Bowl & Moen® Faucet
- S Solid Wood Raised-Panel Bath Doors
- S Deluxe Medicine Cabinet
- S Deluxe Fiberglass Shower w/Fold-Down Seat/Door w/Positive Latch
- S Ceramic Tile Floor (Diagonally Laid)
- S Skylight in Shower
- S Moen® Hand Held Shower Head
- 0 Obscure Glass in Shower
- 0 Nuheat Heated Tile Floor

## Bedroom

- S Solid Wood Raised Panel Bedroom Doors
- S Restonic® Reversible Pillowtop Mattress w/Soft & Firm Sides
- S 60" x 80" Queen Bed
- S Fabric Decor
- S Day/Night Pleated Shades
- S Central Electrical Panel 120V/12V/AC/DC
- S Corian® Night Stand Tops
- S Comforter & Coverlet w/Shams & 2 Throw Pillows
- 0 Shirt Wards with Drawers

## Interior

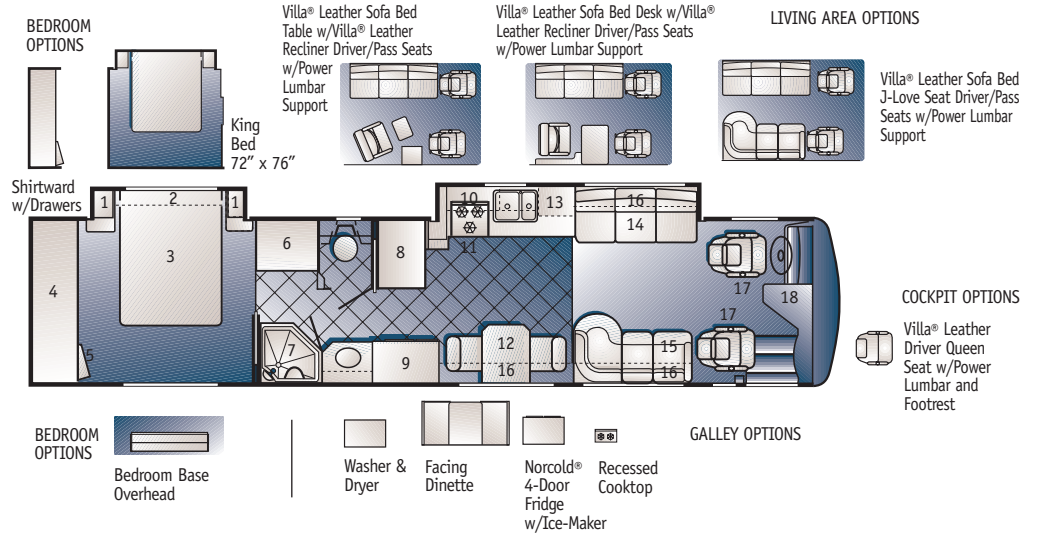
- S 12 Volt Fluorescent Lighting
- S 12 Volt Halogen Lighting
- S TV Antenna with 2 Jacks
- S TV Cable-Ready
- S Alpine Oak Cabinetry
- S Solid Wood Raised-Panel Cabinet Doors
- S Non-Skid Cabinet Shelves
- S Rain Sensor Power Roof Vents with 3-Speed Fan-Bedroom & Galley
- S Vinyl Ceiling
- S Secondary Phone Jack
- S Beveled Glass Mirrors
- S Cedar-Lined Wardrobe
- S 16 Custom Decors (4 Fabric Interiors)
- S Flexsteel Fabric Living Room
- S Deluxe Wall-To-Wall Carpeting (Bedroom & Living Areas)
- S Micro Mini-Blinds in Living Area
- S Lambrequin Window Treatments Throughout
- S Front Windshield Privacy Curtain
- S 2 Sofa Decor Pillows
- S Deluxe Drawer Guides w/Travel Locks
- S Wardrobe Light
- S Entry Step Switch at Entry Wall
- 0 Villa® Leather Living Room
- 0 Day/Night Pleated Shades (Living Area & Dinette)
- 0 Solar Panel
- 0 Rain Sensor Vents - Bath Area
- 0 Wood TV Overhead
- 0 Walnut, Cherry, or Clear White Maple Cabinetry

\*The chassis manufacturer recommends the installation of a supplemental brake control system to activate the brakes on the vehicle or trailer you are towing.

Floor Plans

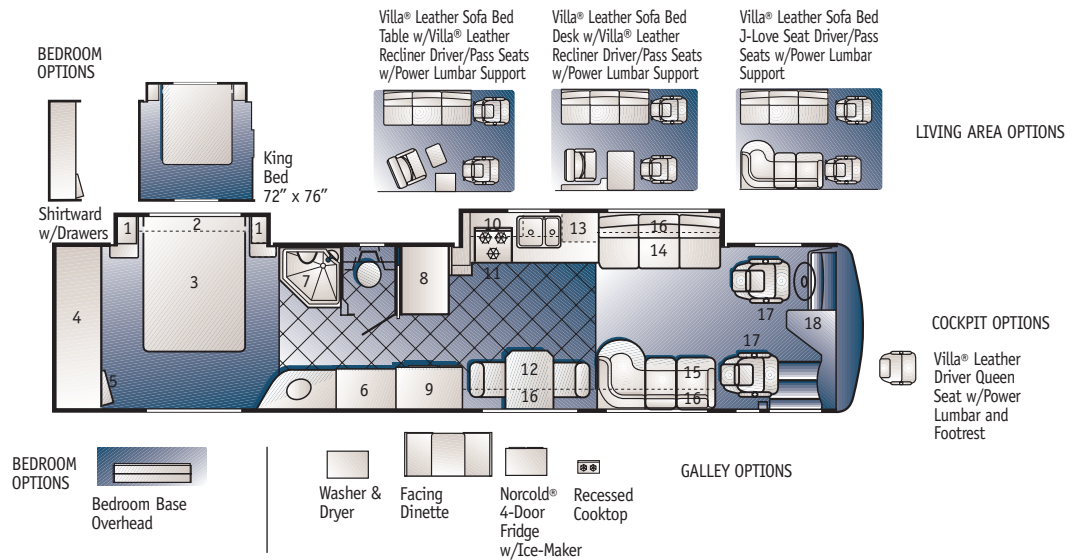
40H Standard Features

1. Nightstand
2. Speaker Soffit with Lighting
3. Queen Bed 60" x 80"
4. Rear Wardrobe
5. 20" Rear TV
6. Linen Closet
7. Shower
8. Pantry
9. Side-By-Side Refer. w/Icemaker
10. Microwave
11. 3 Burner Deluxe Range
12. Table w/Flexsteel Fabric Chairs
13. Galley Overhead
14. Flexsteel Fabric Sofa Bed
15. Flexsteel Fabric J-Love seat
16. Overhead Storage
17. Flexsteel Leather Driver/Passenger Seats
18. 24" Front TV in Overhead



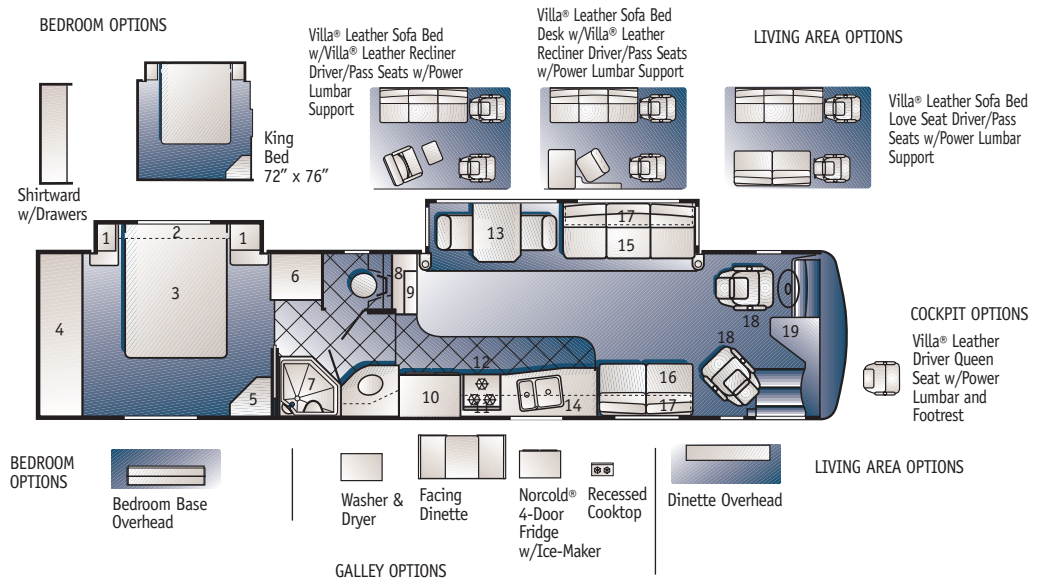
40K Standard Features

1. Nightstand
2. Speaker Soffit with Lighting
3. Queen Bed 60" x 80"
4. Rear Wardrobe
5. 20" Rear TV
6. Linen Closet
7. Shower
8. Pantry
9. Side-By-Side Refer. w/Icemaker
10. Microwave
11. 3 Burner Deluxe Range
12. Table w/Flexsteel Fabric Chairs
13. Galley Overhead
14. Flexsteel Fabric Sofa Bed
15. Flexsteel Fabric J-Love seat
16. Overhead Storage
17. Flexsteel Leather Driver/Passenger Seats
18. 24" Front TV in Overhead



40M Standard Features

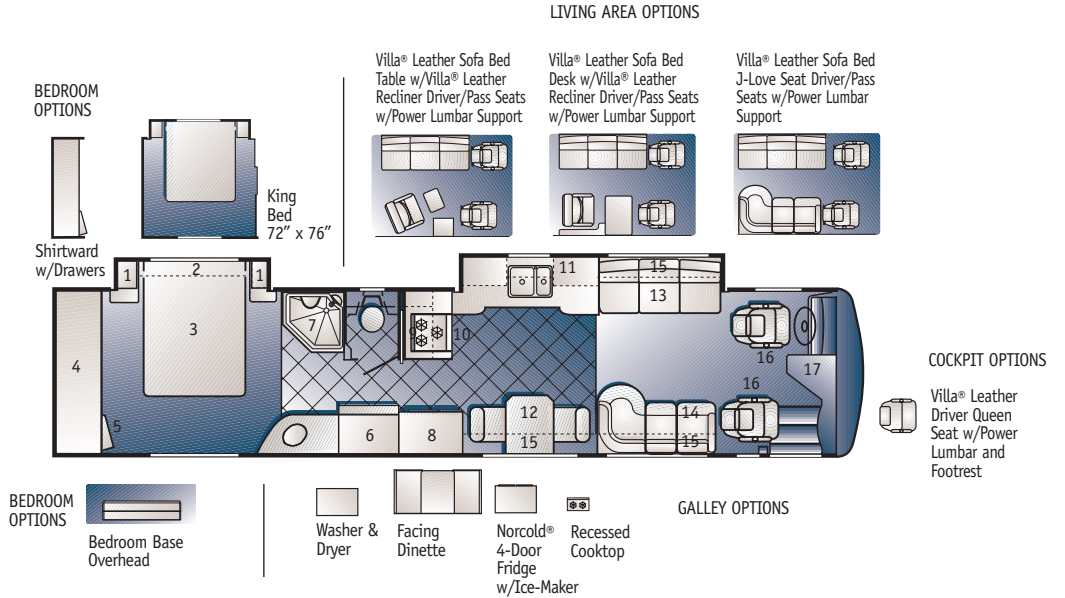
1. Nightstand w/Overhead
2. Speaker Soffit with Lighting
3. Queen Bed 60" x 80"
4. Rear Wardrobe
5. 20" Rear TV
6. Linen w/Drawer & Hamper Rollouts
7. Shower
8. Bath Linen
9. Pantry
10. Side-By-Side Ref. w/Icemaker
11. Microwave
12. 3 Burner Deluxe Range
13. Table w/Flexsteel Fabric Chairs
14. Galley Overhead
15. Flexsteel Fabric Sofa Bed
16. Flexsteel Fabric Love Seat
17. Overhead Storage
18. Flexsteel Leather Driver/Passenger Seats
19. 24" Front TV in Overhead



*Floor Plans*

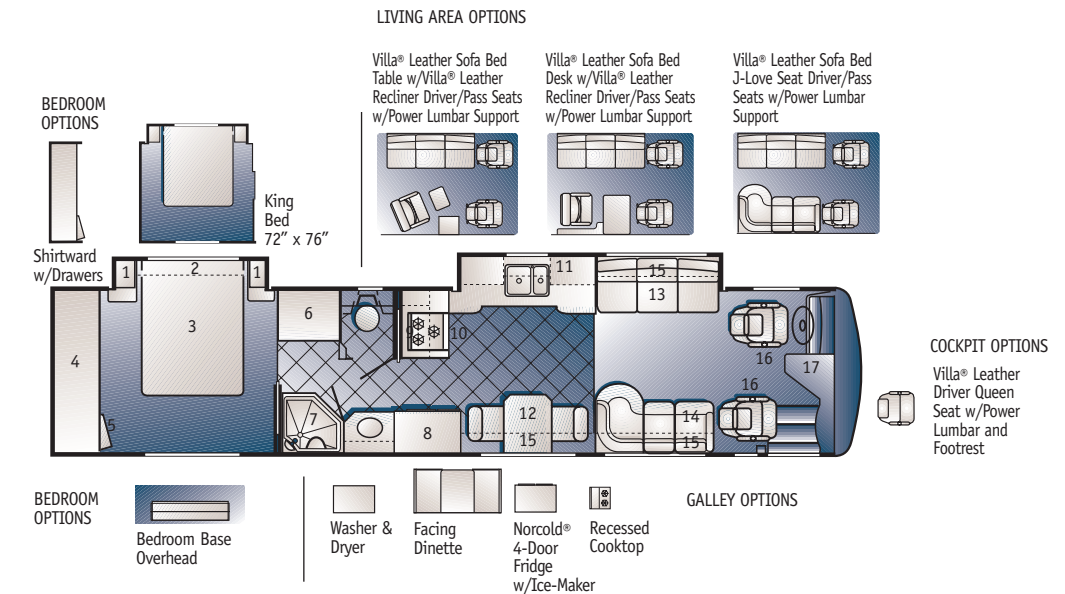
40Q *Standard Features*


1. Nightstand
2. Speaker Sofit with Lighting
3. Queen Bed 60" x 80"
4. Rear Wardrobe
5. 20" Rear TV
6. Linen Closet
7. Shower
8. Side-By-Side Refer. w/Icemaker
9. Microwave
10. 3 Burner Deluxe Range
11. Galley Overhead
12. Table w/Flexsteel Fabric Chairs
13. Flexsteel Fabric Sofa Bed
14. Flexsteel Fabric J-Love seat
15. Overhead Storage
16. Flexsteel Leather Driver/Passenger Seats
17. 24" Front TV in Overhead



40U *Standard Features*

1. Nightstand
2. Speaker Sofit with Lighting
3. Queen Bed 60" x 80"
4. Rear Wardrobe
5. 20" Rear TV
6. Linen Closet
7. Shower
8. Side-By-Side Refer. w/Icemaker
9. Microwave
10. 3 Burner Deluxe Range
11. Galley Overhead
12. Table w/Flexsteel Fabric Chairs
13. Flexsteel Fabric Sofa Bed
14. Flexsteel Fabric J-Love seat
15. Overhead Storage
16. Flexsteel Leather Driver/Passenger Seats
17. 24" Front TV in Overhead





On the surface, Vince Lombardi is simply the name of one of the greatest football coaches of all time. In football folklore, however, the name Lombardi is synonymous with all the qualities and characteristics required to become a winner. Intangibles such as dedication, pride and a winning attitude.

At American Coach, we adopted the Lombardi style and philosophy, and made it our game plan for the future. Coach Lombardi loved what he did for a living. So do we. You'll see it reflected in all our people. All our products. And, everything we do.

You'll even witness it, firsthand, at the team rallies as a new American Coach owner. Because you are the most important member of our winning team. Without you, the game is lost. That's why you can rest assured we'll do everything in our power to keep you in uniform and on our playing field.

We invite you now to experience the thrill of victory, the pride of ownership and the genuine sense of belonging you'll discover as an American Coach owner. Welcome to the team. Welcome to American Coach.



*Fleetwood Motorhomes of Indiana, Inc. • Plant #44 • 1031 U.S. 224 East • Decatur, Indiana 46733-5006  
(219) 728-2121 (800) 648-6582*

**FLEETWOOD.RV**  
[www.fleetwoodrv.com](http://www.fleetwoodrv.com)