

EARTHBOUND

RECREATIONAL VEHICLES



W W W . E A R T H B O U N D R V . C O M

Earth-friendly, family-friendly...

The RV industry is well over due for change, and the industry pioneers behind Earthbound RV have been diligently working on alternative materials, designs and construction methods, that we believe, will initiate that change.



* Please see your vehicle's owners manual for specific towing guidelines. Photo rendering for conceptual purposes only.

A NEW KIND OF RV...A NEW KIND OF COMPANY



The Rules Are About To Change

Earthbound RV's objective is the introduction and distribution of a new, eco-friendly, fuel-efficient travel trailer into the US and Canadian marketplace. The travel trailer will revolutionize the towable RV industry with innovations never before seen in recreational vehicles. Earthbound RV will utilize lighter, recyclable, low volatile organic compound construction materials in an easily towed, family friendly RV, with an original, aerodynamic, automotive inspired design.

Ultra-Low V.O.C. & Recyclable Materials

While it has been common knowledge that high levels of V.O.C.s exist in the materials commonly used to manufacture RV's, automobiles and homes, few manufacturers have been willing or able to incur the cost and time in research associated with the development of low V.O.C. or lightweight, recyclable materials, until now. The founders of Earthbound RV have been working on this implementation for over 5 years.

We are the original innovators.

Better Quality From The Start

Most U.S. consumers are plagued by low final assembly quality and poor material content from RV manufacturer's old school of design and basic construction methods, which in turn, has impacted the consumers overall view of the RV industry's quality standards and impacted the Customer Satisfaction Index. By utilizing state of the art equipment, space-age materials, full pre-delivery inspections and a production management team that features a vested ownership in the company, a new standard of quality will evolve at Earthbound RV.

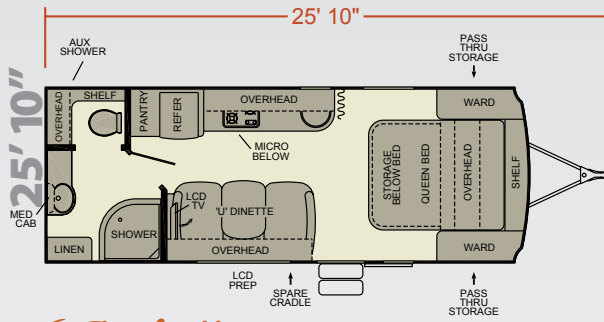
Longer Warranties

Typical warranties in the RV industry are lower than any other transportation based vehicle in existence. Most RV manufacturers offer only a twelve-month, limited "bumper to hitch" warranty, with some offering a two-year "structural" warranty. Because of the structural integrity and quality of materials utilized in each Earthbound RV, our RV's will feature a 3 year, limited** warranty (see owners manual for details). A warranty never before attained by other manufacturers. Most other manufacturers would not think of offering a warranty like this in fear of rot or mildew issues from water intrusion into the wood in their units. There is virtually no wood in an Earthbound RV structure, and our Composite roof, floor, and sidewalls are rot-proof!

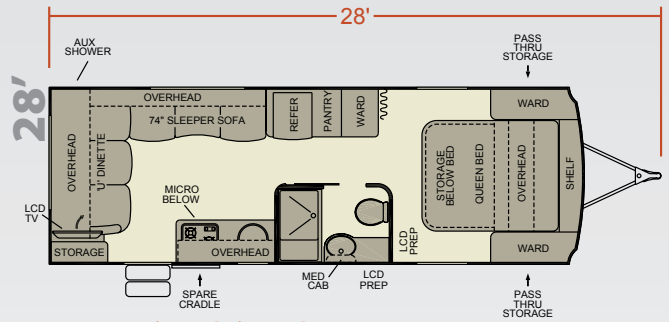
Innovative, Lightweight, More Fuel-Efficient Designs

Our design team, lead by industry veteran Daniel Karl Rodabaugh, has been responsible for producing many of the RV industry's best selling layouts and aerodynamic, lightweight designs. Earthbound RV will continue that pursuit, only developing the industry's top selling floor plans in a lighter, more durable, more fuel efficient design than what was ever before attainable with other manufacturers' outdated materials and methods. It is estimated that a new 30 ft. Earthbound Travel Trailer can weigh as much as 1,500 pounds less than a conventionally designed RV!

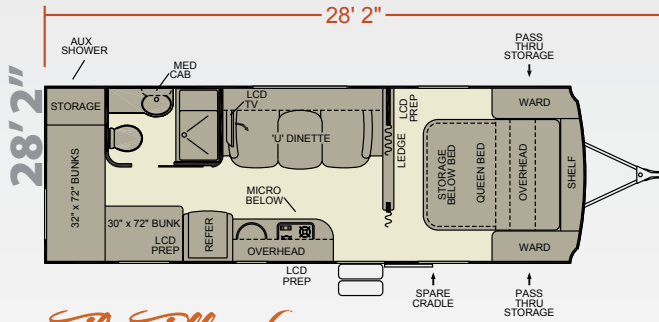
PLANS & SPECIFICATIONS



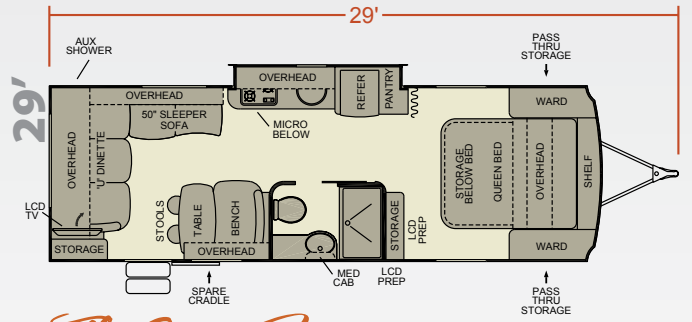
The Dillon



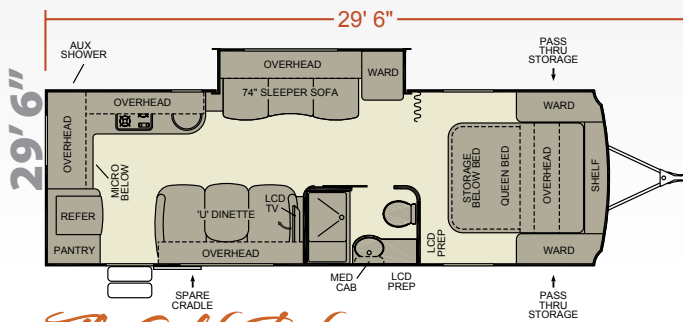
The Red Rock



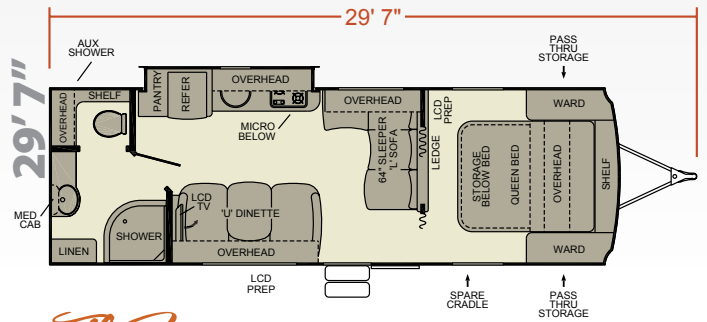
The Telluride



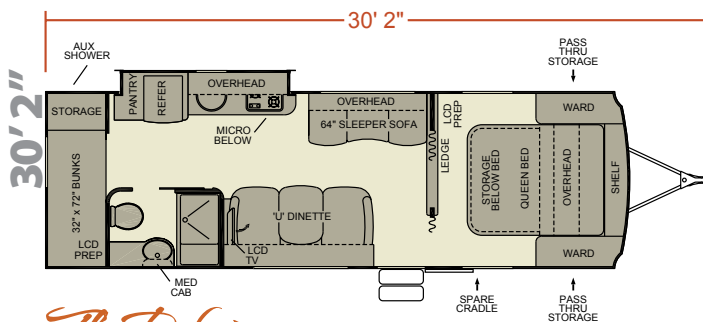
The Copper Mountain



The Golden Ridge



The Morrison



The Dakota



* Please see your vehicle's owners manual for specific towing guidelines. Photo rendering for conceptual purposes only.

PLANS & SPECIFICATIONS

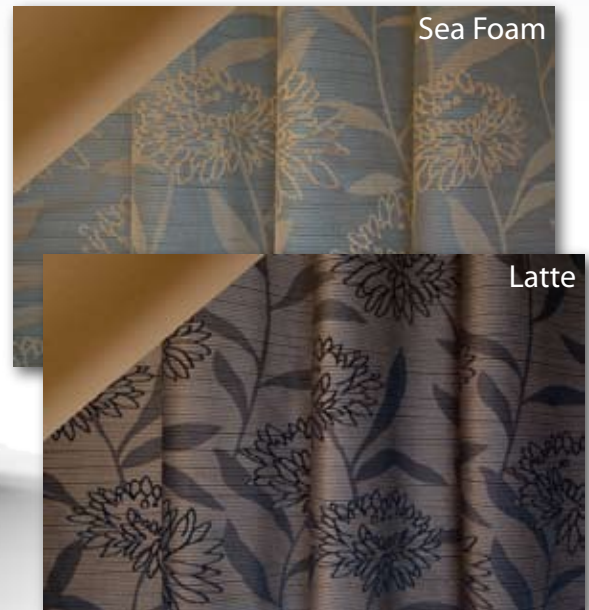
	Dillon (25'10")	Red Rock (28')	Telluride (28'2")	Copper Mountain (29')
Fresh Tank	30 gallons + 6 (hot water)	30 gallons + 6 (hot water)	30 gallons + 6 (hot water)	30 gallons + 6 (hot water)
Grey Tank	30 gallons	30 gallons	30 gallons	30 gallons
Black	30 gallons	30 gallons	30 gallons	30 gallons
GVWR	TBA	TBA	TBA	TBA
CCC	TBA	TBA	TBA	TBA
Dry Weight	TBA	TBA	TBA	TBA
Width	8'1"	8'1"	8'1"	8'1"
Length (Bumper to Hitch)	25'10"	28'	28'2"	29'
Exterior Height	9'3"	9'3"	9'3"	9'3"
Interior Height	78"	78"	78"	78"
Awning Length	TBA	TBA	TBA	TBA
Tires	14" Radial ST-20575-R14	14" Radial ST-20575-R14	14" Radial ST-20575-R14	14" Radial ST-20575-R14
LP	20lb. x 2 (Upgradable to 30lb. x 2)	20lb. x 2 (Upgradable to 30lb. x 2)	20lb. x 2 (Upgradable to 30lb. x 2)	20lb. x 2 (Upgradable to 30lb. x 2)

	Golden Ridge (29'6")	Morrison (29'7")	Dakota (30'2")
Fresh Tank	30 gallons + 6 (hot water)	30 gallons + 6 (hot water)	30 gallons + 6 (hot water)
Grey Tank	60 gallons	30 gallons	30 gallons
Black	30 gallons	30 gallons	30 gallons
GVWR	TBA	TBA	TBA
CCC	TBA	TBA	TBA
Dry Weight	TBA	TBA	TBA
Width	8'1"	8'1"	8'1"
Length (Bumper to Hitch)	29'6"	29'7"	30'2"
Exterior Height	9'3"	9'3"	9'3"
Interior Height	78"	78"	78"
Awning Length	TBA	TBA	TBA
Tires	14" Radial ST-20575-R14	14" Radial ST-20575-R14	14" Radial ST-20575-R14
LP	20lb. x 2 (Upgradable to 30lb. x 2)	20lb. x 2 (Upgradable to 30lb. x 2)	20lb. x 2 (Upgradable to 30lb. x 2)



Exterior height listed is under full load. Unloading unit can add up to 3" to the exterior height.

Interior Decors



STANDARD & OPTIONAL FEATURES

Exterior

- Metallic, Automotive Clear Coat Finish (Exterior Sidewalls)
- Thermal Pane Windows
- Insulated, Heated Holding Tanks
- Steel Rear Bumper
- Scare Light/Porch Light Combo
- Door Side Cable Hook-Up
- 110v Recept At Awning With Interior Switch
- Exterior Speakers
- Torsion Axles
- Front And Rear Stabilizer Jacks
- 5" Crowned, Seamless, UV Treated Composite Roof
- Large, Easy Entry Grab Bar
- Radius Corner Entry Doors, Baggage Doors And Windows
- Stainless Steel Fender Skirting
- Huge Exterior Pass-Through Storage With Compression Latches On Doors
- Automotive L.E.D. Exterior Lights
- Landing Pad For Front Jack
- Front Perimeter Fiberglass Cap
- Rear Perimeter Fiberglass Cap
- Aluminum Alloy Wheels
- Goodyear Radial Tires
- Spare Tire And Mount
- A & E Power Awning

Interior

- AM, FM, CD, Photo, DVD Player With Surround Speakers And iPod Dock
- Interior/Exterior/Bedroom Audio Switcher
- Euro Ultra-Leather Chairs (Where Applicable)
- Large, Ultra-Leather U-Shaped Dinette (Where Applicable)
- Soft-Touch Vinyl Ceiling Throughout
- High Gloss Cabinets With Composite Protection
- Hide-A-Bed Air Mattress/Sofa Combo (Golden Ridge & Telluride Only)
- Jackknife Sofa (Where Applicable)
- Designer Accent Pillows
- Designer Cornice With Hard Lambrequins (Where Applicable)
- Extra Large Dinette Window (Most Floor Plans)
- Brushed Aluminum Wall Treatments Throughout
- Decorative Chrome Chair Railing
- Reflective Window Shades With Built in Screens

- Centralized Control Center
- 19" HDTV With Swing Arm

Kitchen

- Power Exhaust Range Hood With Light
- Ball Bearing, Full Extend Drawer Guides
- Large Slide Out Pantry With Adjustable Shelves
- Flush Mounted Cook-Top With Euro Styled Glass Cover
- Large, Recessed, Stainless Sink With Flush Glass Cover
- Tuck-A-Way Kitchen Faucet (Folds Into Sink To Add Counter Space When Needed)
- Stainless Convection Microwave
- Euro Fridge With Ice Box

Bathroom

- Over Head Vanity Lights
- Soap Dish / Tooth Brush Holder
- Full Tub Surround
- Large Toilet With Foot Flush
- Hand Sprayer In Shower/Tub
- Power Exhaust Fan
- Large Privacy Skylight Over Shower/Tub

Bedroom

- Lift Up Bed With Gas Struts And Large Storage Below
- Bullet Reading Lights Above Bed
- Ledge Above Bed With 110 Recepts
- Hanging Storage
- Coordinating Bedspread With Button Top Pillows
- Pillow Top Mattress

Utilities

- Easy Access Docking Station Featuring:
 - A) Satellite Cable Hook-Ups
 - B) Outside Shower With Separate Hot / Cold
 - C) City Water Fill / Connections
- 36 Gallon Fresh Water Capacity
- 30 Amp Power Cord With Marine Connection
- Dual, Fully Enclosed, 20# LP Tanks
- LP Quick Disconnect
- Carbon Monoxide Detector

STANDARD & OPTIONAL FEATURES

- 6 Gallon Gas / Electric D.S.I. (Direct Spark Ignition) Hot Water Heater
- Black Tank Flush
- Smoke Detector
- Fire Extinguisher
- 3 Stage Converter With Charge Wizard
- Heat Pump/ Air Conditioner

Construction

- Eco Friendly, Recyclable Skins And Framing
- Utilizing Family Friendly, Composite Construction Materials
- Torsion Axles
- All Aluminum Framed, Vacuum Bonded Construction (Walls, Floor, Roof And Interior Walls)
- Composite, Seamless Roof And Floors
- Crowned 5" Roof
- Engineered Norco Frame With Full Outriggers
- In Frame (Below Floor) Roto-Cast Holding Tanks (Insulated And Heated)

Earthbound Available Options

- Canadian Standards
- Propane Furnace
- Propane Oven (In Place Of) Convection Microwave - Available Fall 09
- 30# LP Tanks (In Place Of 20#)
- Shur-Flo Remote Control Vent In Bedroom (Ipo Standard Vent/Fan)
- Power Rear Jacks (In Place Of Standard Rear Jacks)
- Power Front Tongue Jack (In Place Of Standard Front Jack)

Warranty

- All Earthbound Models Feature A Three Year, Bumper To Hitch, Limited** Warranty

*** See Owner's Manual For Specific Details. All Items Subject To Change Without Notice Or Obligation. Information Is Specific To 2009 Model Year Only. Please Contact Your Local Dealer For Up-To-Date, Specific Information, Or Contact Us At info@earthboundrv.com*





A Legendary Innovation From Industry Leaders

True innovators have the potential to change history. The pioneers behind Earthbound RV have done just that. In 1988, Dave Hoefer, a 30-year RV industry veteran and Earthbound consultant, pioneered a travel trailer design that changed the course of the RV industry. Little did anyone know that his innovations behind Dutchmen RV (which started in a barn in the Indiana countryside) would turn Dutchmen into the #1 selling towable RV in just 4 short years. He also pioneered the 1st fully composite RV utilizing low V.O.C. emission construction materials with the help of Automotive Hall of Fame inductee Mary Wetzel, as well as Marc LaCounte, co-founders of Tek-Modo, the innovators behind Cosmo-Lite composite substrates.

EARTHBOUND
RECREATIONAL VEHICLES
WWW.EARTHBOUNDRV.COM



YOUR LOCAL RETAILER

