

Quite simply...
The finest truck camper ever built!



The most innovative name in truck campers



Entertainment center and large dinette windows add life to your travels (DS116RB)



Conveniently located inside the entry door is a multi-function operations panel



Expansive triple slide interior of the TS-116

Large windows are standard on all models



DS116RB Island kitchen, wardrobe and galley



Centralized utility center includes drain valves, city water hook-up, outside shower, black tank flush, 12 volt master disconnect and Cable TV and satellite TV hook-ups



Cab over bedroom with large mirrored and lighted wardrobe



Large lighted and heated basement storage area includes electrical and plumbing access. Massive storage is standard on all Chalet truck campers

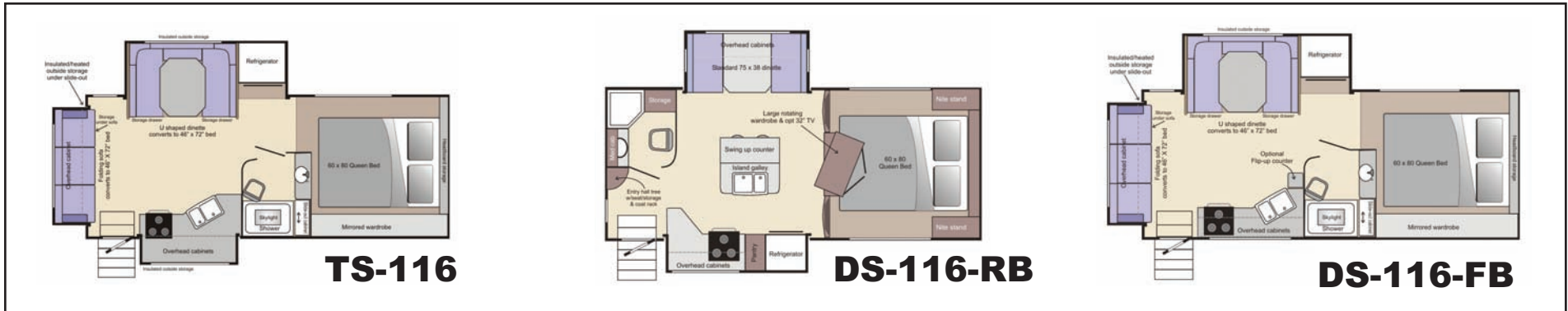
STANDARD FEATURES

	DS-116	DS-116RB	IS-116
Construction and Insulation			
1 year limited structural warranty	Yes	Yes	Yes
No large step into slide rooms	Yes	Yes	Yes
Vacuum bonded 2" side walls with block foam insul.	Yes	Yes	Yes
Vacuum bonded 4" walk on, roof w/block foam insul.	Yes	Yes	Yes
3" thick vacuum bonded 6 layer floor	Yes	Yes	Yes
All plumbing except w/h in heated, insul basement	Yes	Yes	Yes
Combination wood, aluminum & steel const.	Yes	Yes	Yes
Double exterior sealant process throughout	Yes	Yes	Yes
Heavy duty steel tie downs bolted to walls & floor	Yes	Yes	Yes
Tie downs bolted through steel plates	Yes	Yes	Yes
Slide out tray for LPG tanks	Yes	Yes	Yes
Jack brackets bolted through steel plates	Yes	Yes	Yes
12 volt, light weight slide-out mechanisms	Yes	Yes	Yes
Sealed insulated, LPG, battery and storage comp.	Yes	Yes	Yes
Thermal Plastic Polyolefin(TPO) roof (12 year warr)	Yes	Yes	Yes
Vacuum bonded const. w/block foam insulation	Yes	Yes	Yes
Floor and wall panels interlock for superior strength	Yes	Yes	Yes
Swing out jack brackets standard on all models	Yes	Yes	Yes
Exterior			
3 large slide outs, galley, sofa and full wall dinette	N/A	N/A	Yes
2 large slide outs, galley and full wall dinette	Yes	Yes	N/A
Centrally located controls for waste valves	Yes	Yes	Yes
Easy access sewer hose hook-up	Yes	Yes	Yes
Lighted entry assist handle	Yes	Yes	Yes
Exterior and entry step lights w/inside switch	Yes	Yes	Yes
Flush mount door handle with deadbolt	Yes	Yes	Yes
High gloss, gel-coat exterior w/stylish graphics	Yes	Yes	Yes
High output, LED lighting for all clearance lights	Yes	Yes	Yes
High output, LED tail and back-up lights	Yes	Yes	Yes
License plate holder and light	Yes	Yes	Yes
4 high output, LED jack lights	Yes	Yes	Yes
Large heated insul & carpeted basement storage	Yes	Yes	Yes
Lighted 4 step folding entry step	Yes	Yes	Yes
Long 72" storage insulated storage compartment	Yes	N/A	Yes
Large truck bed bumpers	Yes	Yes	Yes
Large, sliding windows w/screens	Yes	Yes	Yes
Molded aluminum drip rails with down spouts	Yes	Yes	Yes
Powder coated electric jacks with wireless remote	Yes	Yes	Yes
Roof & walls reinf. for awnings, solar panels, etc.	Yes	Yes	Yes
Sealed, waterproof lower body, wings and rails	Yes	Yes	Yes
Thick insul, radius, common keyed, compt. doors	Yes	Yes	Yes
Radius corner entry door w/window and screen	Yes	Yes	Yes
Diamond plate risers	Yes	Yes	Yes
Front mounted battery box holds 4 - 6 Batteries	Yes	Yes	Yes
Rear mounted 7 way cord w/trailer hook-up	Yes	Yes	Yes
Interior and Décor			
All solid hardwood cabinetry with veneer panels	Yes	Yes	Yes
All wood full extension drawers w/travel locks	Yes	Yes	Yes
Full extension drawer guides	Yes	Yes	Yes
Hidden hinges and positive latches	Yes	Yes	Yes

	DS-116	DS-116RB	IS-116
Folding sofa converts to 46" x 72" bed	Yes	N/A	Yes
Crown molding throughout	Yes	Yes	Yes
Solid hardwood steps to cab over	N/A	Yes	N/A
Rotating entertainment center/wardrobe	N/A	Yes	N/A
Large full extension storage drawers under dinette	Yes	Yes	Yes
Ducting, plumbing & wiring routed around cabinets	Yes	Yes	Yes
Large storage drawers under dinette	Yes	Yes	Yes
72" long storage area under dinette	N/A	Yes	N/A
Long storage area under sofa	Yes	N/A	Yes
Entry hall tree with hangers, storage and seat	N/A	Yes	N/A
Décor matching bedspreads and pillow shams	Yes	Yes	Yes
Solid hardwood face frame cabinet design	Yes	Yes	Yes
Hardwood drawer fronts & cabinet door frames	Yes	Yes	Yes
Hand upholstered window treatments	Yes	Yes	Yes
Heavy duty vinyl flooring	Yes	Yes	Yes
Night shades & valances on all windows exc. galley	Yes	Yes	Yes
Large floor to ceiling wardrobe w/Drawers	N/A	N/A	N/A
Large rotating wardrobe/entertainment center	N/A	Yes	N/A
Washable, vinyl ceiling & wall paneling	Yes	Yes	Yes
Galley, Appliances and Equipment			
Quality high-rise galley faucet with sprayer	Yes	Yes	Yes
Large pull out pantry	N/A	Yes	N/A
Pre wired and ducted for roof mounted air conditioner	Yes	Yes	Yes
30K BTU, floor ducted forced air furnace w/auto ign	Yes	Yes	Yes
Monitor & fuse panels conveniently located by entry	Yes	Yes	Yes
Heat ducted to basement and storage areas	Yes	Yes	Yes
Generator start & hour meter on monitor panel	Yes	Yes	Yes
Water heater & pump switches on monitor panel	Yes	Yes	Yes
Dual 30# LPG tanks w/auto changeover regulator	Yes	Yes	Yes
Light weight Wilsonart counter top and dinette table	Yes	Yes	Yes
Large, deep country sink	Yes	Yes	Yes
No Plumbing, wiring or ductwork in cabinets	Yes	Yes	Yes
Six-cubic foot double door refrigerator (2 way)	Yes	Yes	Yes
Three-burner range w/oven	Yes	Yes	Yes
Island galley includes sink and abundant storage	N/A	Yes	N/A
Fresh and Waste Water Systems			
12 volt water pump with inline filter	Yes	Yes	Yes
6-gallon DSI, gas water heater	Yes	Yes	Yes
Outside shower	Yes	Yes	Yes
Black tank flush	Yes	Yes	Yes
66 gallon fresh water tank (total 72 gal fresh water)	Yes	Yes	Yes
38 gallon grey water tank with remote dump valve	Yes	Yes	Yes
38 gallon black water tank with remote dump valve	Yes	Yes	Yes
Lockable fresh water fill	Yes	Yes	Yes
Easy access, inclosed low point fresh water drains	Yes	Yes	Yes
Single, easy access for elect. operated waste valves	Yes	Yes	Yes
Tanks located in basement for best weight distrib	Yes	Yes	Yes
All exterior mounted utilities behind 1 locking door	Yes	Yes	Yes
Lighted utility area	Yes	Yes	Yes
All plumbing fittings are serviceable from storage area	Yes	Yes	Yes
Water heater bypass valves	Yes	Yes	Yes
Winterization valve and line	Yes	Yes	Yes
Bathroom			
Wall switched light and exhaust fan	Yes	Yes	Yes
Forward lavy with large shower	Yes	N/A	Yes
Rear lavy with corner shower	N/A	Yes	N/A
Full height shower enclosure	Yes	Yes	Yes
Adjustable, ducted heat and air in bathroom	Yes	Yes	Yes

	DS-116	DS-116RB	IS-116
Fresh water flush toilet	Yes	Yes	Yes
Hand held shower head with water saving head	Yes	Yes	Yes
Large storage cabinet	Yes	N/A	Yes
Solid wood mirrored medicine cabinet	N/A	Yes	N/A
Floor to ceiling storage cabinet in bathroom	N/A	Yes	N/A
Light weight laminate counter top	Yes	Yes	Yes
Lavatory sink with faucet	Yes	Yes	Yes
Skylight over shower	Yes	Yes	Yes
Mildew resistant shower curtain with tie back	Yes	Yes	Yes
Separate shower/toilet (dry bath) w/skylight	Yes	Yes	Yes
Cab-over Area			
Short 24" step to cab over floor	Yes	Yes	Yes
Cab over queen bed w/60"x 80" deluxe mattress	Yes	Yes	Yes
Carpeted cab over floor	Yes	Yes	Yes
Heat and air ducted to cab over area	Yes	Yes	Yes
Two pivoting reading lights in cab over	Yes	Yes	Yes
Wall switched cab over lighting	Yes	Yes	Yes
Extra large mirrored, lighted, wardrobe in cab over	Yes	N/A	Yes
Large rotating wardrobe with optional 32" TV	N/A	Yes	N/A
Décor matching bedspread and pillow shams	Yes	Yes	Yes
Bed located for entrance from either side	N/A	Yes	Yes
Shelf across head of bed	Yes	Yes	Yes
Dinette Area			
U-shaped dinette standard	Yes	Opt	Yes
Dinette area convert into 46" X 72" bed	Yes	N/A	Yes
Dinette area convert into 46" X 76" bed	N/A	Yes	N/A
1" block foam insulation under dinette seats	Yes	Yes	Yes
2 large full extension storage drawers below dinette	Yes	Yes	Yes
5" thick, Dacron wrapped cushions	Yes	Yes	Yes
72" flip lounge	Yes	N/A	Yes
Lightweight, laminate dinette table	Yes	Yes	Yes
Sofa converts into 46" X 72" bed	Yes	N/A	Yes
Electrical			
2 TV locations	Yes	N/A	Yes
12/110 volt inverted TV outlets	Yes	Yes	Yes
110 and 12 volt convenience outlets for TV	Yes	Yes	Yes
110V GFI-protected lavy, patio and galley outlets	Yes	Yes	Yes
12 volt jacks with wireless remote control	Yes	Yes	Yes
LED exterior jack lighting	Yes	Yes	Yes
45-amp electronic power converter w/charger	Yes	Yes	Yes
Battery charger	Yes	Yes	Yes
Access panels for plumbing & elect maintenance	Yes	Yes	Yes
Pre-wired for micro, stereo, air cond. & solar panels	Yes	Yes	Yes
12 volt plug & coax hook up for portable satellite dish	Yes	Yes	Yes
Easy access power distribution center	Yes	Yes	Yes
Easy access battery disconnect switch	Yes	Yes	Yes
High output incandescent lighting	Yes	Yes	Yes
Generator ready	Yes	Yes	Yes
Prewired for TV antenna, cable TV & satellite dish	Yes	Yes	Yes
Removable 30-foot, 110-volt, 30-amp shore cord	Yes	Yes	Yes
Utility light for after dark hookups	Yes	Yes	Yes
Wall switched interior light, step and porch lights	Yes	Yes	Yes
Safety			
Carbon monoxide/smoke detector/LPG gas detector	Yes	Yes	Yes
Emergency cab over egress	Yes	Yes	Yes
Fire retardant fabrics throughout	Yes	Yes	Yes
Large, entry assist handle	Yes	Yes	Yes
Fire Extinguisher	Yes	Yes	Yes

FLOOR PLANS



SPECIFICATIONS

	TS-116	DS-116FB	DS-116RB
Sleeps	5	5	4
Cab over bed size	60" x 80"	60" x 80"	60" x 80"
Dinette bed size	46" x 72"	46" x 72"	35" x 78"
Sofa bed size	46" x 72"	N/A	N/A
Cab over ceiling height	36" - 54"	36" - 54"	36" - 54"
Floor Length	11' 6"	11' 6"	11' 6"
Overall Length (slides in/out)	20'/21'6"	20'/21'6"	20'
Interior Height	6' 7"	6' 7"	6' 7"
Exterior Width (slides in/out)	8'/12'3"	8'/11'	8'/11'9"
LPG Tanks (no./lbs)	2/30 lbs	2/30 lbs	2/30 lbs
Center of Gravity (from front of bulkhead)	48"	46"	44"
Fresh water capacity (approx gals)	66	66	66
Grey water Capacity (approx gals)	38	38	38
Black water Capacity (approx gals)	38	38	38
Refrigerator 2 way (doors/cu. ft.)	2/6'	2/6'	2/6'
DSI Gas water heater cap. (gal)	6	6	6
Furnace (BTU's)	30,000	30,000	30,000
Estimated Dry Weight (approx lbs)	3695	3650	3610
Estimated Wet Weight (approx lbs)	4203	4158	4118

OPTIONS

- 8' 2 way refer
- 10' 2 way refer
- Gas/electric water heater
- 11K BTU lo profile air conditioner
- 15/22K BTU dual stage, Furnace
- Microwave oven
- Micro/conv oven (replaces oven)
- Water filter
- Day/nite shades
- Fantastic fan w/rain sensor/thermostat
- Fantastic fan
- Heki skylight w/shade
- Counter top extension (some models)
- Fold down bunk over dinette (some models)
- Fold down bunk over sofa (TS116 & DS116)
- Quick connect barbeque outlet
- 2.5 KW LP Generator
- 22" flat screen TV w/mount
- 32" flat screen TV w/mount
- AM/FM/CD inc 4 int & 2 ext speakers
- Automatic satellite dome
- Satellite dish w/digital sensor
- Speakers only 4 int and 2 ext
- TV antenna w/booster
- 125 watt 30 amp solar package (single panel)
- 180 watt 30 amp solar package (dual panel)
- Wireless rear view monitor system
- Remote control spotlight
- Thermal pane windows
- Slide toppers (ea)
- Electric awning
- Phat Max rack/ladder (not avail on some models)

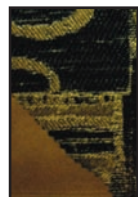
WOOD FINISH



Dark Alder



Light Alder



Black Gold



Indigo Blue



Jade Green

UPHOLSTERY

Note: All features and specifications including weights and measures are approximate and are subject to change without notice. The information included in this brochure is as accurate as possible at the time this publication was produced. Ongoing improvements and refinements may be evident in the photos displayed in this brochure and in actual products.

CHALET RV INC.
 124 41st Ave. S.E. Albany, OR 97322
 Phone: 541-791-4610 Fax: 541-791-4618
 Website: www.chaletrv.com