



AT CROWNLINE, we realize that buying a boat is a huge investment. Whether you are new to the boat ownership experience or a seasoned boater, you will want to make the most informed decision possible. In order to assist you in that process, we would like to take this opportunity to provide you with information about Crownline Boats. During the sixteen years we have been in business, we have grown from a small start-up boat company to one of the largest, most recognized brands in the industry today. Crownline Boats, Inc. is one of the largest single brands in the marine industry – worldwide. If you sort the market data based upon the 21’ to 32’ boat segment, we are the third largest single manufacturer in the industry. If you sort the market data based upon the 18’ to 32’ boat segment, we are in the top five. Either way you look at it, we are one of the top marine manufacturers in the industry today. Following are a few key points we know you look for when considering a boat brand.

DESIGN: Innovative boat designs that focus on sophistication and exclusivity are the basis of the Research and Development division at Crownline Boats, Inc. Our sleek sports car styling and lustrous gelcoat will definitely attract attention. The style lines below the rub rail are designed specifically to cast shadows and reflect light. The windshield frames flow into the deck. Crownline offers a progressive alternative to the uninspired styling of our competitors, generating much excitement throughout the industry.

STANDARD FEATURES: Crownline builds boats that are loaded with outstanding customer-driven standard features. By listening to our customers, experienced boaters who embrace the boating lifestyle, we have determined which value-added standard features are most important to include in order to make on-board times the best times ever. Crownline provides the longest list of standard features of any builder in the industry – bar none! And, we are continually reevaluating this list each year to keep up with the complex and ever changing needs of our customers. It’s just one more example of why Crownline continues to be one of the top builders of owner-pleasing stern drive sport boats and a leader in boat owner satisfaction.

RIDE: At Crownline, we encapsulate our stringer systems in fiberglass. Once glassed into place, the cavities are foam filled. Our construction process builds added strength and the foam filled stringer design is a great safety feature with noise absorbent qualities. Our strategic approach to deep-V hulls and fast planing times equals a smooth and responsive ride. The combination gives you a ride without a “hollow sound” and it provides that new and responsive boat “feel” throughout the ownership experience. Additionally,

our F.A.S.T. Tab® hull is designed to insure planing efficiency and stability in high-speed turns. All of these features combined make Crownline one of the best handling boats on the water.

QUALITY: We use the highest quality products available in our lamination process - Armorcote Gelcoat, for a high gloss finish, premium marine resin during construction for strength and endurance and a Vinyl Ester Barrier coat to all but eliminate blistering concerns. Our highly skilled technicians install hand-laid wovens, bi-directional fiberglass and composite coring materials (Nida-core) to provide uncompromised structural quality. These are all expensive, labor-intensive processes and steps, but they separate a good boat from a great one. Every boat that leaves our facility reflects our commitment to excellence and quality. Crownline boats are a great value, delivering quality that stands the test of time. That’s why we are one of the top manufactures in the boat building industry!



WARRANTY: Because we have so much confidence in the quality of our boats and the components we use, Crownline offers one of the most comprehensive warranties in the industry. While most manufacturers offer two years of coverage, Crownline boats come standard with a five year guarantee on stainless steel, five years on seam separation on our upholstery and canvas, a lifetime warranty on our gauges and a five year warranty on our engines and powertrains. Complete details outlining our “Best In Class” warranty coverage can be found in this catalog and on our website at www.crownline.com.

SAFETY: Safety has always been and will always be a priority at Crownline. All Crownline boats are certified by the NMMA. Their certification requirements are based on the ABYC’s “Standards and Recommended Practices for Small Craft.” To be certified, a manufacturer must pass inspections that encompass a range of safety standards. In addition, we are also inspected annually by the Coast Guard and continue to receive exceptionally high marks from them for our boat building processes. Our boats feature an abundance of standard features that support increased



safety. Our F.A.S.T. Tab® hull is designed to insure planing efficiency and stability in high-speed turns. Deep freeboards provide added safety and comfort for little ones. Our audio/visual high water alarms (found in all of our cuddies, cruisers and large bowriders with sleeping accommodations) provide added safety and security. Full beam swim platforms add boarding and exiting security. Standard features such as pull up cleats, plenty of grab handles, four step boarding ladders with handles – all help to keep your family safe during your boating adventures.

OPTIONAL EQUIPMENT: Crownline offers an extensive model line-up for every lifestyle, with clever innovations to help make boating experiences the best possible. In addition to the seemingly limitless number of standard features we provide, Crownline still allows you to express your unique style and satisfy the special needs of your family by offering you a large variety of engine applications (which carry a **FIVE-YEAR POWERTRAIN WARRANTY!**) and other options such as a large selection of gelcoat colors, graphics, seating arrangements, etc. A Crownline boat customized to meet your needs is your assurance of a thoroughly enjoyable ownership experience. That’s our reason for being in business. (Visit the “Build a Boat” section at our website, www.crownline.com, for a complete list of available options for each of our models.)

AT CROWNLINE, our entire team is committed to being the best in class, not only in product, but in customer satisfaction as well. Exceeding your expectations is the key to our continued success. We invite you to visit your nearest Crownline dealer and see for yourself why the Crownline name is among the most respected in the industry.



CROWNLINE.....

THE TOTAL OWNERSHIP EXPERIENCE

- **LIFETIME STRUCTURAL WARRANTY ON THE DECK, HULL, AND TRANSOM FOR AS LONG AS YOU OWN YOUR BOAT**
- **LIFETIME STRINGER SYSTEM WARRANTY AGAINST DELAMINATION OR MANUFACTURER'S DEFECT**
- **LIFETIME WARRANTY ON GAUGES***



- **FIVE YEAR CANVAS WARRANTY AGAINST MANUFACTURER'S DEFECTS, SEAM TEARS AND THREAD SEPARATION**
- **FIVE YEAR UPHOLSTERY WARRANTY AGAINST MANUFACTURER'S DEFECTS, SEAM TEARS AND THREAD SEPARATION**

2008 "BEST IN CLASS"

SIGNATURE CLASS COVERAGE

- **FIVE YEAR WARRANTY AGAINST MANUFACTURER'S DEFECT ON STAINLESS STEEL**
- **FIVE YEAR WARRANTY ON GELCOAT BLISTERING**

- **FIVE YEAR POWERTRAIN & ENGINE WARRANTY**

****THESE WARRANTIES APPLY TO NORTH AMERICA ONLY. PLEASE SEE YOUR EXPORT DEALER FOR EXPORT WARRANTY INFORMATION****

STANDARD EQUIPMENT **PLEASE SEE FULL WRITTEN CROWNLINE WARRANTY STATEMENT FOR COMPLETE DETAILS*



CROWNLINE

*Another
Crownline
First To
The Market*

(Patent Pending - Social Swim Transom)



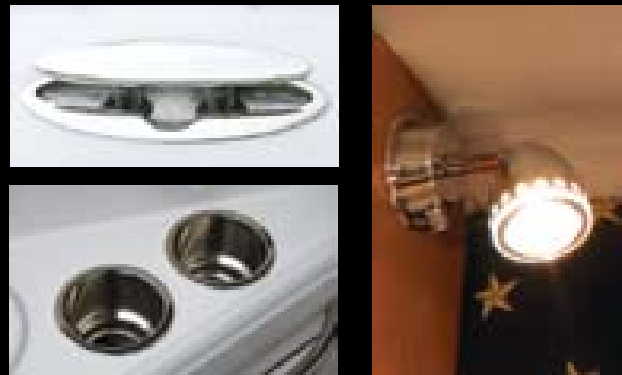


CROWNLINE

*Sophisticated
New Designs,
Leaving A
Wake Of
Desire*

*Where
Perfect
Design
Meets
Perfect
Execution*





Stainless, Everywhere You Look!

Crownline uses only top of the line components and materials to build our boats. Stainless steel is abundant throughout our boats, adding not only beauty and class, but also offering durable design solutions. Our stainless steel cup holders are much more durable than the plastic type used by some manufacturers. Crownline also uses stainless steel grab handles for strength and durability and stainless steel shocks on our lids and sundecks for opening and closing ease and safety. Stainless steel refrigerators, sinks and microwaves provide a classy contrast to the warm, luxurious wood cabinetry in our cabins. Stainless steel windshield headers add strength and accentuate the curved lines of our windshields. These are the kinds of details that set Crownline apart, the difference between a good boat and a great boat.



Value Added Standard Features

Crownline builds boats that are loaded with outstanding customer-driven standard features. By listening to our customers we have determined which value-added standard features are most important to include in order to make on-board times the best times ever. By making these features standard, we increase our purchasing volume, thus reducing cost. This allows Crownline to provide our customers what they want at a more affordable price. Some features, such as our Sony Marine stereo, offer enhanced entertainment value. Others, such as our full beam wrap-around extended swim platforms, provide boarding and exiting security for added safety. The digital depth sounder with outside air and water temperature will help keep you out of the shallow water. The snap-in cockpit carpet makes cleaning up a breeze. The bow and cockpit canvas protect your boats interior, and the bimini will help protect your family from too much sun or the occasional rain shower. These are just a few examples of why Crownline continues to be one of the top builders of owner-pleasing stern drive sport boats and a leader in boat owner satisfaction.





F.A.S.T. Tab® HULL DESIGN

One of the most efficient and attractive hull designs on the market today, improving slow-speed stability, time-to-plane acceleration and fuel economy. There's always positive control with the most unique sport boat hull system running today.

CROWNLINE....

First To The Market Design Philosophies – Changing The Way Customers Boat

CRUISER SUNBED WITH OVERSIZED TRUNK

(U.S. Patent No. 7,000,557)

Most boaters have lots of toys and gear, making optimal storage a key feature when purchasing a boat. Our cruiser sunbed (patent pending) provides a deep storage area and features a designated place to stow away your cockpit table when it's not being used.



First To Market, 24' to 30'

"Hot Tub" style bow seating with retractable flip-up arm rests.



First To Market All Models 18' TO 34' I-Pod/MP3 Capable



COCKPIT SUNBED

Floor plans, seating, upholstery, sundecks and helm design are all creatively and seamlessly blended into an assortment of individualized platforms to meet the needs of the full range of sport boaters. This three-position sunbed design eliminates the need for filler cushions, thus changing the way customers boat. Imagination and innovation are designed into every boat we build.



HIGHLY SOPHISTICATED SPORTS CAR STYLING-

Innovative boat designs that focus on sophistication and exclusivity are the basis of the Research and Development division at Crownline Boats, Inc. The sleek sports car styling and lustrous gelcoat will definitely attract attention. Not all boats are created equal; Crownline boats are made to stand apart from the crowd.

CROWNLINE

Unparalleled Design

•

*Unbelievable
Attention To Detail*

•

Unequaled Value



*I-Pod/MP3 Capable -
All Models 18' TO 34'*



Color Matched Stainless Steel Dash
with Crownline Branding



CROWNLINE

*Realize
Your Dreams...
Own A
Crownline*





BOWRIDERS

- | | |
|--------|-----------------|
| 180 BR | 240 LS |
| 19 SS | 260 LS |
| 200 LS | 270 BR |
| 210 LS | 300 LS |
| 21 SS | 320 LS |
| 220 LS | RAZOR
series |
| 230 LS | |
| 23 SS | LPX
series |

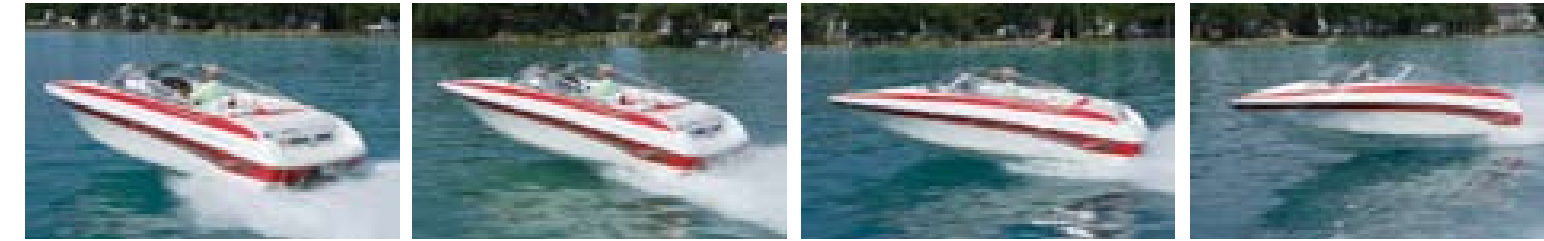
*Bowriders are ideal for
all-around water activities like
skiing, swimming, fishing or
just plain cruising.*



180 BR



Solid Ruby with Racing graphics.



STANDARD FEATURES

- 12V receptacle
- Automatic bilge pump w/manual override
- Canvas - color-keyed convertible top w/boot
- Chrome vents
- Cooler - easy access soft-side, removable
- Electric horn
- Fire extinguisher
- Full fiberglass bow liner
- Graphics - Classic
- Hour meter
- In-floor vented ski storage w/hinged lid & removable liner
- Interior - Moonstone w/Moonrock accents
- Navigation lights
- Pressure treated marine panels w/transferable lifetime warranty
- Rack-&-pinion steering
- S/Steel hardware, ski tow eye & two-step boarding ladder
- S/Steel windshield supports
- Transshield shipping cover
- Windshield - curved safety glass, walk-thru

VALUE ADDED STANDARD FEATURES

- Cleats - (3) 6" S/Steel pull up
- Dash inserts - laser
- Full instrumentation - deluxe reduced glare, fog resistant gauges w/S/Steel bezels & lifetime warranty
- Gelcoat - premium two-tone Armorcote
- Gelcoat design (narrow hull band/middle deck band) or solid Moonstone
- Grab handles - S/Steel
- Interior layout - newly designed flip-up driver bucket seat w/SSS (Suspension System Seating), back to back lounger & two-position aft jump seats
- Premium smooth-actuation throttle & shift cables
- S/Steel cupholders
- Stereo - Sony marine stereo w/single disc player & 2 speakers w/auxiliary input jack for I-Pod/MP3 player
- Tilt steering wheel

Five Year Powertrain & Engine Warranty

Overall Length: 18' / 5.5M Beam: 92" / 2.3M
Super Sport Interior



Standard dash with laser insert.



Laser trimmed passenger console.



In-floor ski locker.



Moonstone/Ruby with standard silver graphics.

SPECIFICATIONS

8 PERSON CAPACITY	FUEL CAPACITY	MAXIMUM ENGINE	DRY WEIGHT	DRAFT	DEADRISE	ANGLE OF ENTRY AT BOW	BRIDGE CLEARANCE
1160 lbs/526kg	27 Gal /102L	220 HP	2450-2600 lbs 1112-1179kg	13"/27" 33cm/69cm	18°	37°	46" /1.2M



Moonstone/Ruby with standard graphics and color matched deck vents.

19 SS



STANDARD FEATURES

- 12 Volt receptacle at helm
- Anchor storage compartment (self bailing)
- Automatic bilge pump w/manual override
- Canvas - color-keyed convertible top w/boot
- Cooler - easy access soft-side, removable
- Electric horn
- Engine hour meter
- Fire extinguisher
- Fully integrated structural fiberglass liner
- Glove box, lockable
- Graphics - classic
- In-floor lockable ski storage w/hinged lid
- Navigation lights
- Pressure treated marine panels w/transferrable lifetime warranty
- Rack-&-pinion steering
- Transshield shipping cover
- Windshield - curved tinted, safety glass, walk-thru

VALUE ADDED STANDARD FEATURES

- Cleats - (6) S/Steel 6" pull up (incl. mid-ship)
- Deck vents - Moonstone
- Depth sounder w/outside air & water temp.
- Extended swim platform - fully integrated w/four-step boarding ladder w/diamond non-skid
- F.A.S.T. Tab®, vented hull chine w/reversed chines & delta performance pad
- Full instrumentation - deluxe reduced glare, fog resistant gauges w/S/Steel bezels & lifetime warranty
- Gelcoat - premium two-tone Armorcote gelcoat design (narrow hull band or solid Moonstone)
- Grab handles - S/Steel
- Interior - Moonstone w/Moonrock accents, Super Sport w/two newly designed SSS (Suspension System Seating) flip-up bucket seats w/color coordinated shields & logos & deluxe sundeck design
- Premium smooth-actuation throttle & shift cables
- Snap-in cockpit carpet
- S/Steel cupholders
- S/Steel ski tow rail w/eye
- S/Steel shocks for sundeck & lids
- Stereo - Sony marine stereo w/single disc player & 2 speakers w/auxiliary input jack for I-Pod/MP3 player
- Tilt steering wheel
- Walk-thru transom



Five Year Powertrain & Engine Warranty

Overall Length: 19'1" / 5.8M Beam: 92" / 2.3M
Standard Super Sport Interior



Helm with S/Steel bezels and digital depth sounder w/outside air and water temperature.



Convenient walk-thru provides easy access to the sundeck, swim platform and cockpit.



The 19 SS comes standard with six stainless steel pull up cleats (including two mid-ship).



Large under-seat storage area in the bow.

SPECIFICATIONS

8 PERSON CAPACITY	FUEL CAPACITY	MAXIMUM ENGINE	DRY WEIGHT	DRAFT	DEADRISE	ANGLE OF ENTRY AT BOW	BRIDGE CLEARANCE
1250 lbs/567kg	27 Gal /102L	260 HP	2900-3100 lbs 1315-1406kg	13"/27" 33cm/69cm	18°	37°	48" /1.2M



200 LS



Overall Length 2.59M
Standard Super Sport

- 12 Volt receptacle
- Anchor storage compartment (self bailing)
- Automatic bilge pump w/manual override
- Bow cooler w/drain
- Coaming boxes
- Cooler - easy access soft-side, removable
- Canvas - Color-keyed bow & cockpit canvas or exchange for Westland one piece mooring cover (color-matched)
- Canvas - color-keyed stand-up bimini top, embroidered boot, quick disconnect hardware, retractable legs & S/Steel tubing
- Cleats - (6) S/Steel 6" pull up cleats (incl. 2 mid-ship)
- Courtesy lights
- Diamond anti-skid surface
- Electric horn
- Fiberglass aft seat w/finished storage & pad
- Finished bow storage tubs w/drain
- Fire extinguisher
- Fully integrated structural fiberglass liner
- Cockpit carpet - snap in
- Deck vents - moonstone
- Depth sounder w/outside air & water temp.
- Extended swim platform - full beam wrap-around w/handle & four step boarding ladder w/diamond non-skid & etched logo
- F.A.S.T. Tab®, vented hull chine w/reversed chines & delta performance pad
- Gelcoat - premium two-tone Armorcote gelcoat (narrow hull band or solid Moonstone)
- Glove box - lockable, drained
- Graphics - (Mondial) - highly visible safety graphics
- Full instrumentation - deluxe reduced glare, fog resistant gauges w/S/Steel bezels & lifetime warranty
- Grab handles - S/Steel
- Interior - Super Sport interior w/two newly designed SSS (Suspension System Seating) flip-up color-coordinated bucket seats & matching shields w/logos
- Premium smooth-actuation throttle & shift cables
- S/Steel cupholders
- In-floor finished lockable ski & kneeboard storage w/hinged lids & tub w/ drain
- Navigation lights
- Rack-&-pinion steering
- S/Steel welded bow rail-1" dia., 316L Stainless
- S/Steel ski tow eye
- S/Steel shocks for sundeck & lids
- Stereo - Sony marine stereo w/single disc player & 4 speakers w/auxiliary input jack for I-Pod/MP3 player
- Tilt steering wheel
- Walk-thru transom, convenient flip-up design



Helm features woodgrain dash and wheel insert.



Super Sport sunpad bench and deluxe sundeck with flip-up walk-thru.



Deluxe sundeck with headrest at reclined position.



Large under-seat storage area in the bow.

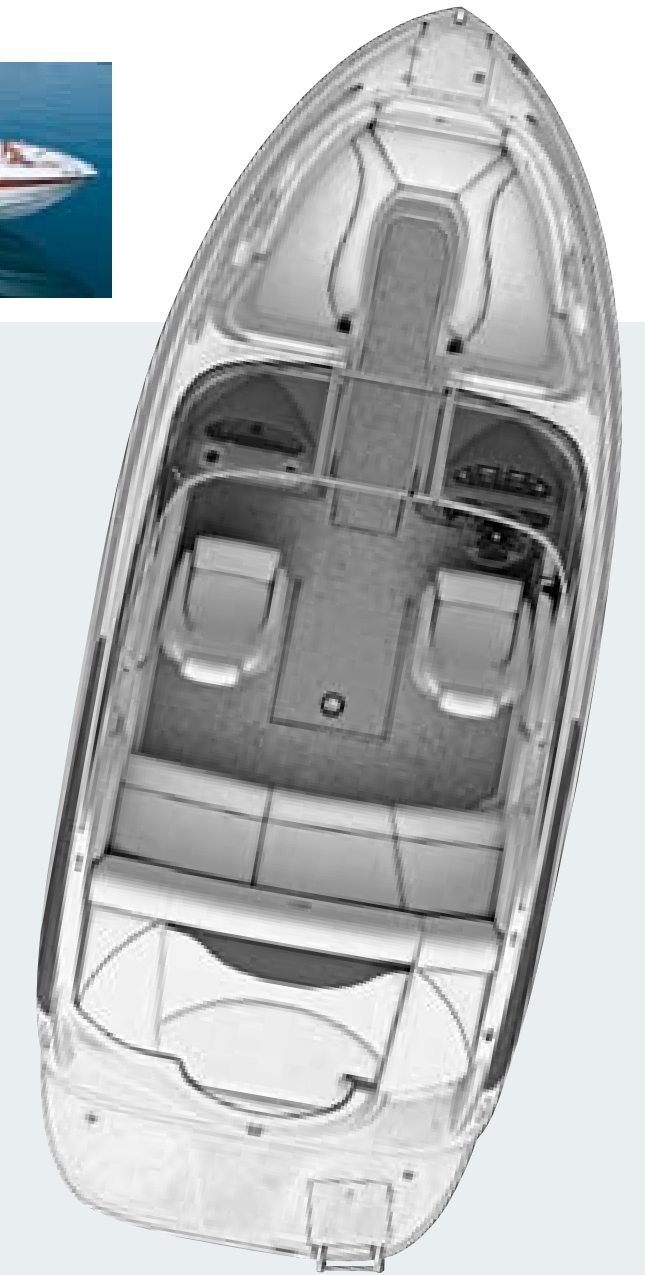
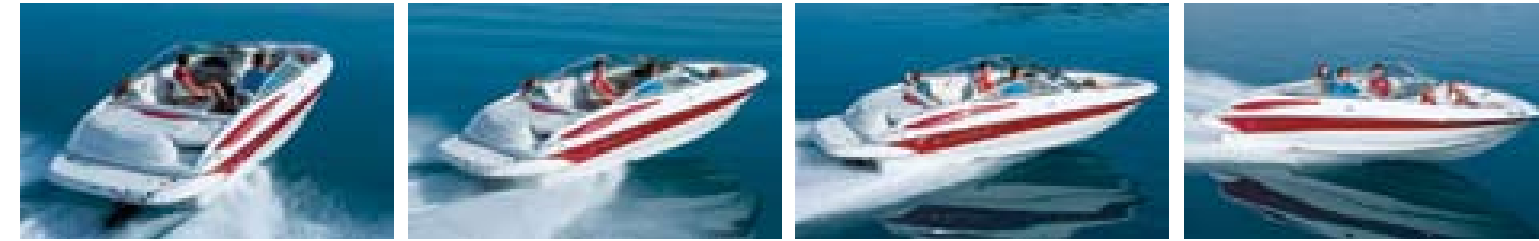
SPECIFICATIONS

8 PERSON CAPACITY	FUEL CAPACITY	MAXIMUM ENGINE	DRY WEIGHT	DRAFT	DEADRISE	ANGLE OF ENTRY AT BOW	BRIDGE CLEARANCE
1370 lbs/621kg	37 gal /140L	260 hp	3400-3600 lbs 1542-1633kg	18" /32" 46cm/81cm	19"	39°	53" /1.35m



Shown in Moonstone/Garnet with crystal cap letters and logo and color matched deck vents.

210 LS



STANDARD FEATURES

- 12 Volt receptacle
- Anchor storage compartment (self bailing)
- Automatic bilge pump w/manual override
- Bow cooler w/drain
- Coaming boxes
- Cooler - easy access soft-side, removable
- Courtesy lights
- Deck vent covers (Moonstone)
- Diamond anti-skid surface
- Electric horn
- Fiberglass aft seat w/finished storage & pad
- Finished bow storage tubs w/drain
- Fire extinguisher
- Fully integrated structural fiberglass liner
- Gelcoat - premium two-tone Armorcote gelcoat (narrow hull band or solid Moonstone)
- Glove box - lockable, drained
- Graphics - (Mondial) highly visible safety graphics
- In-floor finished lockable ski & kneeboard storage w/hinged lids & tub w/ drain
- Navigation lights
- Rack-&-pinion steering
- Transhield shipping cover
- Windshield - curved, tinted safety glass

VALUE ADDED STANDARD FEATURES

- Canvas - color-keyed bow & cockpit or exchange for Westland one-piece mooring cover (color matched)
- Canvas - color-keyed stand-up bimini top, embroidered boot, quick disconnect hardware, retractable legs & S/Steel tubing
- Cleats - (6) S/Steel 6" pull up cleats (incl. 2 mid-ship)
- Cockpit carpet - snap in
- Depth sounder w/outside air & water temp.
- Extended swim platform - full beam wrap-around w/handle & four step boarding ladder w/diamond non-skid & etched logo
- F.A.S.T. Tab®, vented hull chine w/reversed chines & delta performance pad
- Full instrumentation - deluxe reduced glare, fog resistant gauges w/S/Steel bezels & lifetime warranty
- Grab handles - S/Steel
- Interior - Super Sport interior w/two newly designed SSS (Suspension System Seating) flip-up color-coordinated bucket seats & matching shields w/logos
- Premium smooth-actuation throttle & shift cables
- S/Steel cupholders
- S/Steel welded bow rail-1" dia., 316L Stainless
- S/Steel ski tow eye
- S/Steel shocks for sundeck & lids
- Stereo - Sony marine stereo w/single disc player & 4 speakers w/auxiliary input jack for I-Pod/MP3 player
- Tilt steering wheel
- Walk - thru transom

Five Year Powertrain & Engine Warranty

Overall Length: 21'6" / 6.6M Beam: 102" / 2.59M
Standard Super Sport Interior

SPECIFICATIONS

9 PERSON CAPACITY	FUEL CAPACITY	MAXIMUM ENGINE	DRY WEIGHT	DRAFT	DEADRISE	ANGLE OF ENTRY AT BOW	BRIDGE CLEARANCE
1400 lbs/635kg	37 Gal /140L	300 HP	3600-3800 lbs 1632-1723kg	18"/32" 46cm/81cm	19°	39°	53" /1.35M



Helm features optional woodgrain dash and wheel insert.



Super Sport sunpad bench and deluxe sun-deck with flip-up walk-thru.



Deluxe sundeck with headrest at reclined position.



Large under-seat storage area in the bow.



Shown in Moonstone/Amethyst with Diamond graphics and color matched deck vents.

21 SS



STANDARD FEATURES

- 12 Volt receptacle
- Anchor storage compartment (self bailing)
- Automatic bilge pump w/manual override
- Courtesy lights
- Engine hour meter
- Fire extinguisher
- Glassliner - fully integrated structural fiberglass liner
- Glovebox - lockable
- Graphics - classic
- In-floor lockable ski & kneeboard storage w/vented & hinged lid
- Navigation lights
- Pressure treated marine panels w/transferrable lifetime warranty
- Rack-&-pinion steering
- Transhield shipping cover
- Windshield - curved tinted, safety glass, walk-thru

VALUE ADDED STANDARD FEATURES

- Canvas - color-keyed bow & cockpit or exchange for Westland one-piece mooring cover
- Canvas - color-keyed stand-up bimini top, embroidered boot, quick disconnect hardware, retractable legs & S/Steel tubing
- Cleats - (6) S/Steel 6" pull up cleats (incl. mid-ship)
- Cockpit carpet - snap in
- Deck vents - Moonstone
- Depth sounder w/outside air & water temp.
- Fully integrated oversized swim platform w/four - step boarding ladder w/diamond non-skid
- F.A.S.T. Tab®, vented hull chine w/reversed chines & delta performance pad
- Full instrumentation - deluxe reduced glare, fog resistant gauges w/S/Steel bezels & lifetime warranty
- Gelcoat - two-tone premium Armorcote gelcoat pattern (narrow hull band) or solid Moonstone
- Grab handles - S/Steel
- Interior - Super Sport interior w/two newly designed SSS (Suspension System Seating) flip-up color-coordinated bucket seats & matching shields w/logos
- Premium smooth-actuation throttle & shift cables
- S/Steel cupholders
- S/Steel ski tow rail w/eye
- S/Steel welded bow rails-1" dia., 316L Stainless
- S/Steel shocks for sundeck & lids
- Stereo - Sony marine stereo w/single disc player & 4 speakers w/auxiliary input jack for I-Pod/MP3 player
- Tilt steering wheel
- Walk-thru transom

Five Year Powertrain & Engine Warranty

Overall Length: 20'10" / 6.35M Beam: 102" / 2.59M

Standard Super Sport Interior



Full instrumentation carries a lifetime warranty. Woodgrain dash and wheel insert are optional.



The sundeck headrest flips up to open the walk-thru to the swim platform.



In-floor lockable ski & wakeboard storage.



S/Steel cupholder is conveniently located in the passenger console.

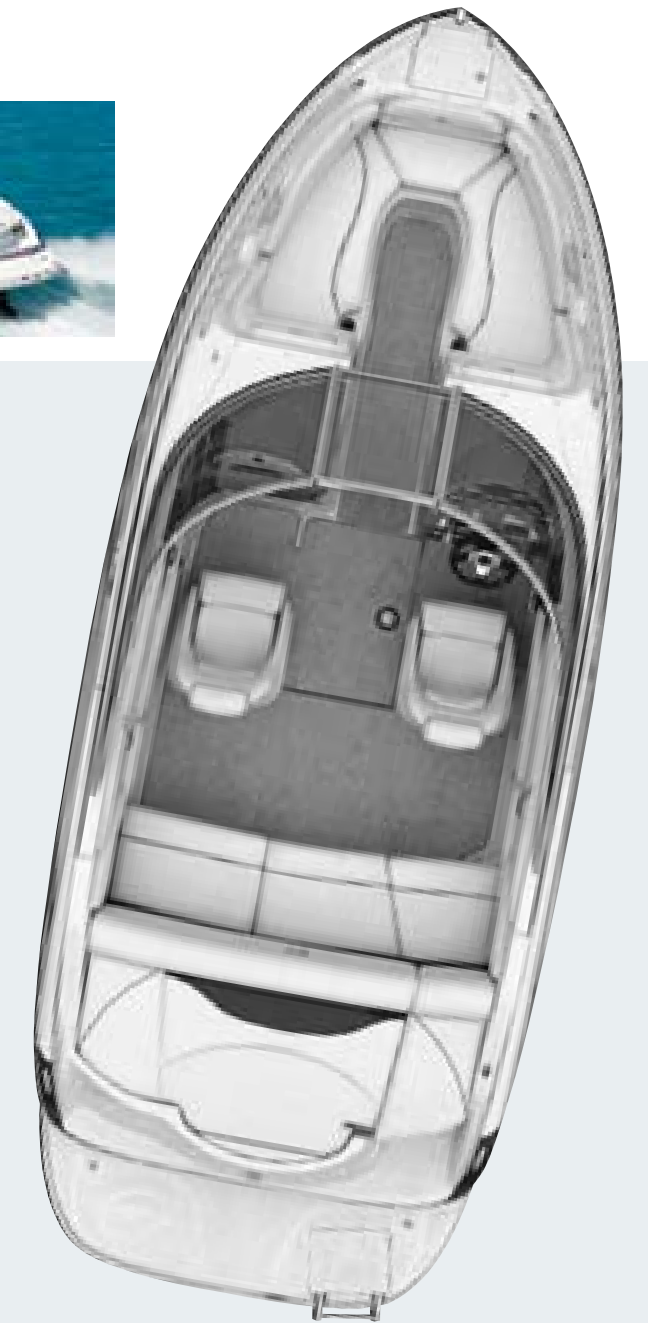
SPECIFICATIONS

10 PERSON CAPACITY	FUEL CAPACITY	MAXIMUM ENGINE	DRY WEIGHT	DRAFT	DEADRISE	ANGLE OF ENTRY AT BOW	BRIDGE CLEARANCE
1442 lbs/654kg	41 Gal /155L	320 HP	3500-3700 lbs 1588-1678kg	16"/30" 41cm/76cm	16°	37°	49.25" /1.3M



Moonstone/Amethyst with Razor graphics and Executive gelcoat pattern

220 LS



STANDARD FEATURES

- 12 Volt receptacle
- Anchor storage compartment (self bailing)
- Automatic bilge pump w/manual override
- Bow cooler w/drain
- Coaming boxes-oversized
- Cooler - Easy access soft-side, removable
- Courtesy lights
- Deck vent covers - Moonstone
- Diamond anti-skid surface
- Electric horn
- Fiberglass aft seat w/finished storage & pad
- Finished bow storage tubs w/drain
- Fire extinguisher
- Fully integrated structural fiberglass liner
- Glove box - lockable, drained
- In-floor finished lockable ski & wakeboard storage w/S/Steel hinged lids
- Interior color - Moonrock
- Navigation lights
- Rack-&-pinion steering
- Tilt steering wheel
- Transhield shipping cover

VALUE ADDED STANDARD FEATURES

- Canvas - color-keyed bow & cockpit canvas or exchange for Westland one-piece mooring cover (color-matched)
- Color-keyed stand-up bimini top, embroidered boot, quick disconnect hardware, retractable legs & S/Steel tubing
- Cleats - (6) S/Steel 6" pull up cleats (incl.2 mid-ship)
- Cockpit carpet - snap in
- Crystal cap letters w/Crownline logo
- Curved, tinted safety glass walk-thru windshield
- Depth sounder w/outside air & water temp.
- Extended swim platform - full beam wrap around w/handle & four step boarding ladder w/diamond non-skid & etched logo
- F.A.S.T. Tab®, vented hull chine w/reversed chines & delta performance pad
- Full instrumentation - deluxe reduced glare, fog resistant gauges w/S/Steel bezels & lifetime warranty
- Gelcoat - two-tone premium Armorcote pattern (narrow band) or solid Moonstone
- Grab handles - S/Steel
- Interior - Super Sport interior w/two newly designed SSS (Suspension System Seating) flip-up color-coordinated bucket seats & matching shields w/logos & walk-thru access
- Premium smooth-actuation throttle & shift cables
- S/Steel cupholders
- S/Steel rub rail insert w/white extrusion
- S/Steel welded bow rail- 1" dia., 316L Stainless
- S/Steel ski tow eye
- S/Steel shocks for sundeck & lids
- Stereo - Sony marine stereo w/single disc player & 4 speakers w/auxiliary input jack for I-Pod/MP3 player
- Walk-thru transom

Five Year Powertrain & Engine Warranty

Overall Length: 22'6" / 6.6M Beam: 102" / 2.59M
Standard Super Sport Interior

SPECIFICATIONS

10 PERSON CAPACITY	FUEL CAPACITY	MAXIMUM ENGINE	DRY WEIGHT	DRAFT	DEADRISE	ANGLE OF ENTRY AT BOW	BRIDGE CLEARANCE
1442 lbs/654kg	45 Gal /170L	320 HP	3700-3900 lbs 1678-1769kg	18"/32" 46cm/81cm	19°	39°	49.25" /1.3M



Optional S/Steel dash insert with Crownline branding, S/Steel switch and ignition panels, color matched gauge tray and Executive steering wheel.



Portable table has a designated storage area in the engine compartment.



Flip-up feature converts the full sunbed into a convenient walk-thru transom.

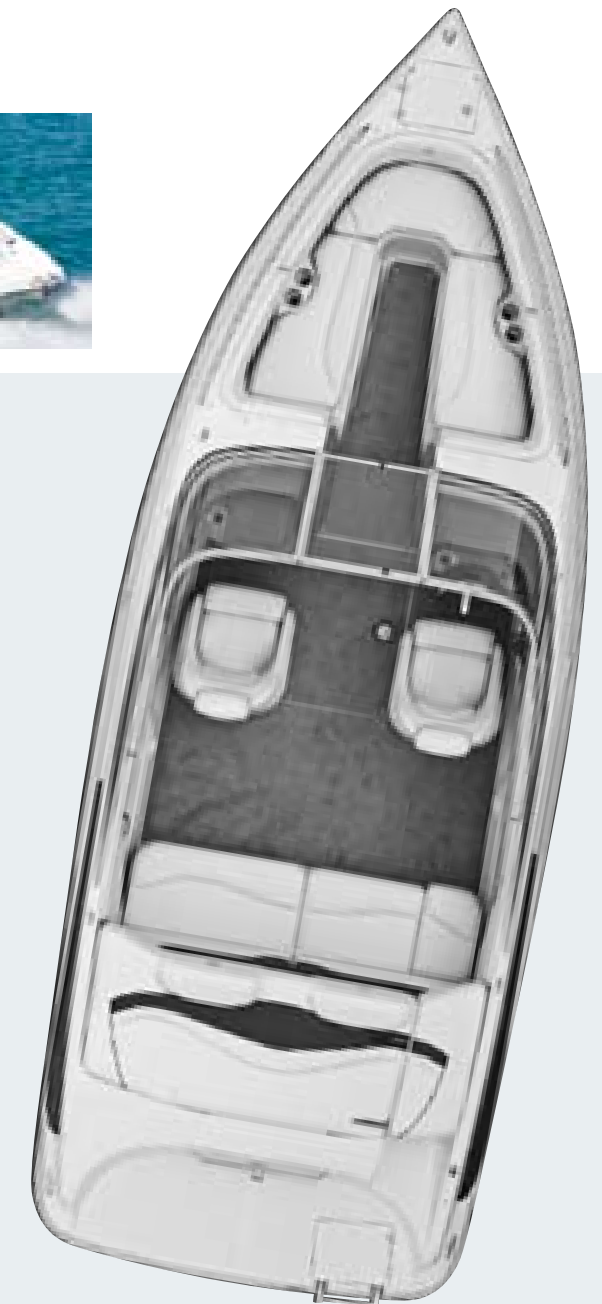


In-floor lockable ski & wakeboard storage.

23 SS



Shown in Moonstone/Onyx with color-matched deck vents and Executive graphics.



STANDARD FEATURES

- 12 Volt receptacle
- Anchor storage compartment
- Automatic bilge pump w/manual override
- Courtesy lights
- Electric horn
- Engine hour meter
- Fire extinguisher
- Glassliner - fully integrated structural fiberglass liner
- Glovebox - lockable
- In-floor lockable ski & wakeboard storage, vented w/S/Steel hinged lid
- Navigation lights
- Pressure treated marine panels w/transerable lifetime warranty
- Rack-&-pinion steering
- Transshield shipping cover
- Windshield - curved tinted, safety glass walk-thru

VALUE ADDED STANDARD FEATURES

- Canvas - bow & cockpit canvas or exchange for Westland one-piece mooring cover (color-matched)
- Canvas - color-keyed stand-up bimini top, embroidered boot, quick disconnect hardware, retractable legs & S/Steel tubing
- Cleats - (6) S/Steel 6" pull up cleats (incl. mid-ship)
- Crystal cap letters w/Crownline logo
- Deluxe deck vents (Moonstone)
- Depth sounder w/outside air & water temp.
- Fully integrated oversized swim platform w/four- step boarding ladder w/diamond non-skid
- F.A.S.T. Tab®, vented hull chine w/reversed chines & delta performance pad
- Full instrumentation - deluxe reduced glare, fog resistant gauges w/S/Steel bezels & lifetime warranty
- Gelcoat - two-tone premium Armorcote gelcoat pattern (narrow hull band) or solid Moonstone
- Grab handles - S/Steel
- Interior - Super Sport interior w/two newly designed SSS (Suspension System Seating) flip-up color-coordinated bucket seats & matching shields w/logos
- Premium smooth-actuation throttle & shift cables
- Snap-in cockpit carpet
- S/Steel cupholders
- S/Steel tow rail w/eye
- S/Steel welded bow rails-1" dia., 316L Stainless
- S/Steel shocks for sundeck & lids
- S/Steel rub rail Insert w/black or white extrusion
- Stereo - Sony marine stereo w/single disc player & 4 speakers w/auxiliary input jack for I-Pod / MP3 player
- Tilt steering wheel
- Walk-thru transom

Five Year Powertrain & Engine Warranty

Overall Length: 23'3" / 7.1M Beam: 102" / 2.59M
Standard Super Sport Interior

SPECIFICATIONS

11 PERSON CAPACITY	FUEL CAPACITY	MAXIMUM ENGINE	DRY WEIGHT	DRAFT	DEADRISE	ANGLE OF ENTRY AT BOW	BRIDGE CLEARANCE
1583 lbs/718kg	62 Gal /235L	425 HP	4000-4200 lbs 1814-1905kg	18"/32" 46cm/81cm	18°	37°	53" /1.34M



Helm comes with a laser insert dash, tilt steering wheel, marine stereo with CD player and depth sounder.



Optional fill-in cushions convert the bow into a spacious sun lounge.



Deluxe sundeck with headrests and convenient walk-thru access.

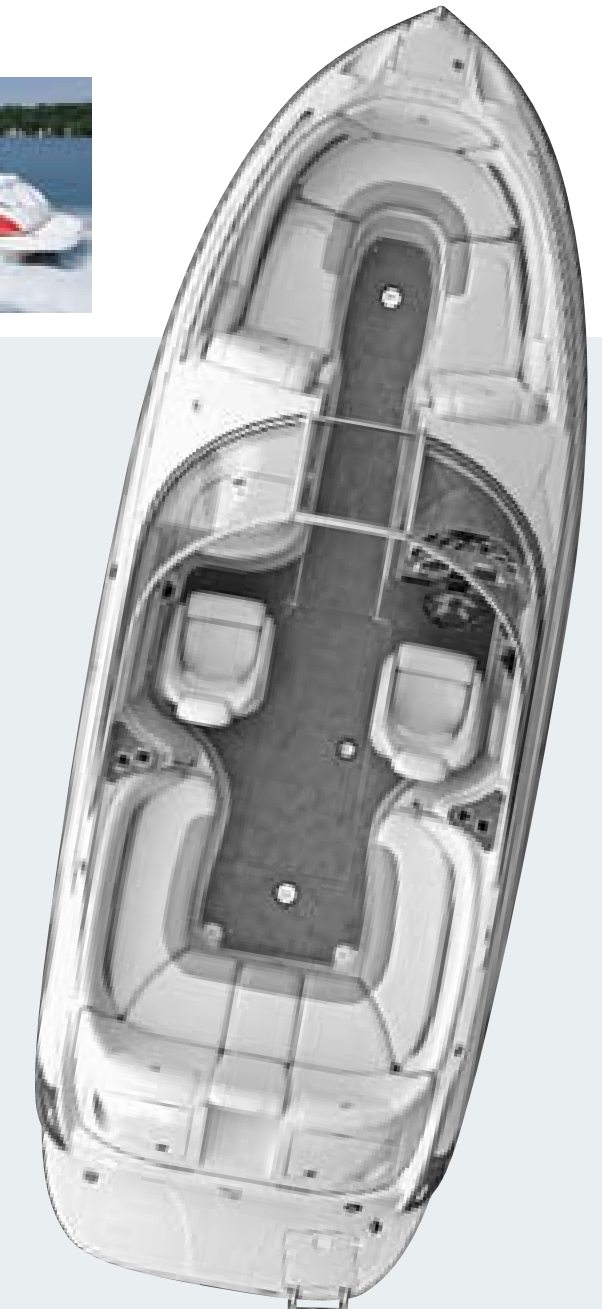


In-floor wakeboard/ski storage compartment.



240 LS shown in Moonstone/Ruby with Executive gelcoat, Razor graphics and optional social swim transom.

240 LS



STANDARD FEATURES

- 12 Volt receptacle
- 15 gallon fresh water tank
- Anchor/rope storage compartment w/protective mat & rope tie off
- Automatic bilge pump w/manual override
- Center transom cockpit entry w/fillers
- Coaming boxes
- Cockpit cooler - carry-on
- Console storage at helm
- Curved tinted safety glass walk thru windshield
- Diamond anti-skid surface
- Electric horn
- Engine hour meter
- Fire extinguisher
- Flush fit bow closeout door
- Fully integrated fiberglass cockpit liner
- Gelcoat - Premium two-tone Armorcote gelcoat pattern (narrow hull band) or solid Moonstone
- In-floor lockable ski & wakeboard storage w/Steel hinged lid & removable protective pad w/additional ski storage under starboard bow cushion
- Laserwave dash insert
- Navigation lights

VALUE ADDED STANDARD FEATURES

- Canvas - bow and cockpit or exchange for Westland one-piece mooring cover (color matched)
- Canvas - stand-up bimini top w/quick disconnect hardware, embroidered boot, S/Steel tubing & hardware, & retractable legs
- Crystal cap letters w/Crownline logo
- Depth sounder w/outside air & water temp.
- Docking lights (fully integrated)
- Extended swim platform - extended beam wrap-around w/handle & four step boarding ladder w/diamond non-skid & etched logo
- F.A.S.T. Tab®, vented hull chine w/reversed chines & delta performance pad
- Fender storage tubes
- Full instrumentation - deluxe reduced glare, fog resistant gauges w/S/Steel bezels & lifetime warranty
- Interior - tri-color Platinum interior design w/"Hot Tub" style reclined bow lounge seats, U-shape cockpit w/two newly designed SSS (Suspension System Seating) flip-up bucket seats & color coordinated shields w/logos
- Low glare dash - driver side
- Premium smooth-actuation throttle & shift cables
- Pressurized water system
- Snap-in cockpit carpet
- S/Steel rub rail insert w/white extrusion
- Stereo - Sony marine stereo w/single disc player & 4 speakers w/auxiliary input jack for I-Pod/MP3 player

- Pressure treated marine panels w/transferable lifetime warranty
- Rack-&-pinion steering
- Storage, bow - Abundant in-floor carpeted storage under port & starboard bow seats
- Tilt steering wheel
- Transhield shipping cover
- Trash receptacle

- S/Steel grab handles
- S/Steel 6" pull-up cleats, (bow, mid-ship & aft) (6)
- S/Steel cupholders
- S/Steel welded bow rails - 1" dia., 316L Stainless
- S/Steel ski tow rail
- S/Steel windshield braces
- S/Steel shocks for sundecks & lids
- Head - portable toilet, enclosed w/light, opening screened portlight window, sink w/shower & electric exhaust vent

Five Year Powertrain & Engine Warranty

Overall Length: 25' / 7.6M Beam: 102" / 2.59M
Standard U-wrap Interior

SPECIFICATIONS

12 PERSON CAPACITY	FUEL CAPACITY	MAXIMUM ENGINE	DRY WEIGHT	DRAFT	DEADRISE	ANGLE OF ENTRY AT BOW	BRIDGE CLEARANCE
1875 Lbs/860kg	50 Gal /182L	425 HP	4700-4900 lbs 1861-2223kg	19"/35" 48cm/89cm	19°	39°	62" /1.6M



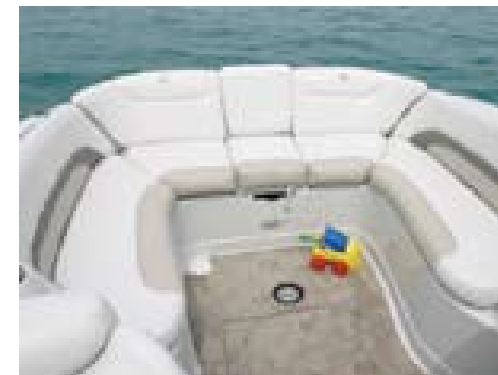
"Hot Tub" style reclined bow seats with optional flip-up arm rests.



Optional Social Swim Transom with external splashproof speakers, amp and sound shields.



Head includes a portable toilet, opening portlight, sink, shower and electric exhaust vent.



The U-wrap cockpit seating configuration boasts a comfortable 14-degree recline angle.

EXTREME RAZOR PACKAGE



EXTREME RAZOR PACKAGE

- Special Extreme Razor deck band
- Full hull band
- Color matched swim platform with snap-on carpet
- Kicker speakers throughout
- Premium stereo system, amp, canned tower speakers (set of two)
- LCD Sony transom remote
- Dual battery switch
- Forward facing tower with suntop (shown here without suntop in place)
- Board racks (set of two)
- Extreme Razor graphics

- Package available on the Crownline 220 LS and 230 LS



RAZOR PACKAGE



RAZOR PACKAGE

- Tower and Razor Graphics package available on:
210 LS, 220 LS, 230 LS, 240 LS,
260 LS, 220 EX, 240 EX, 252 EX,
260 EX, 262 EX and 255 CCR
- Forward facing aluminum tube wakeboard tower/radar arch and color-matched cockpit suntop
- Tower Only available on:
21 SS, 23 SS and 270 BR



The forward facing wakeboard tower includes a color-matched cockpit suntop



LPX's shown in solid Citrine, Ruby, Moonstone and Onyx with Racing graphics.

LPX PACKAGE



21 SS
Overall Length: 20'10" / 6.35M
Beam: 102" / 2.59M
Standard Super Sport Interior



LPX PACKAGE

Available on the 21 SS and 23 SS

- Low profile, smoked glass windscreen
- Corsa Quick and Quiet Plus w/thru side hull exhaust
- S/Steel recessed docking lights
- S/Steel rub rail insert w/black or white extrusion
- Black helm station w/Executive steering wheel

SPECIFICATIONS

	21 SS	23 SS
CAPACITY	(10 people) 1442 Lbs / 654kg	(11 people) 1583 Lbs / 718kg
FUEL CAPACITY	41 Gal / 155L	62 Gal / 235L
MAXIMUM ENGINE	320 HP	425 HP
DRY WEIGHT	3500-3700 Lbs / 1589-1679kg	4000-4200 Lbs / 1814-1905kg
DRAFT (UP/DOWN)	16" / 30" - 41cm / 76cm	18" / 32" - 46cm / 81cm
DEADRISE	16°	18°
ANGLE OF ENTRY AT BOW	37°	37°
BRIDGE CLEARANCE	49.25" / 1.25M	53" / 1.34M

Five Year Powertrain & Engine Warranty

23 SS
Overall Length: 23'3" / 7.1M
Beam: 102" / 2.59M
Standard Super Sport Interior



The black LPX helm is complimented by the Executive steering wheel.



Passenger console has a stainless steel cupholder, lockable glove box and flip-up storage compartment.



Stainless steel thru hull side exhaust.

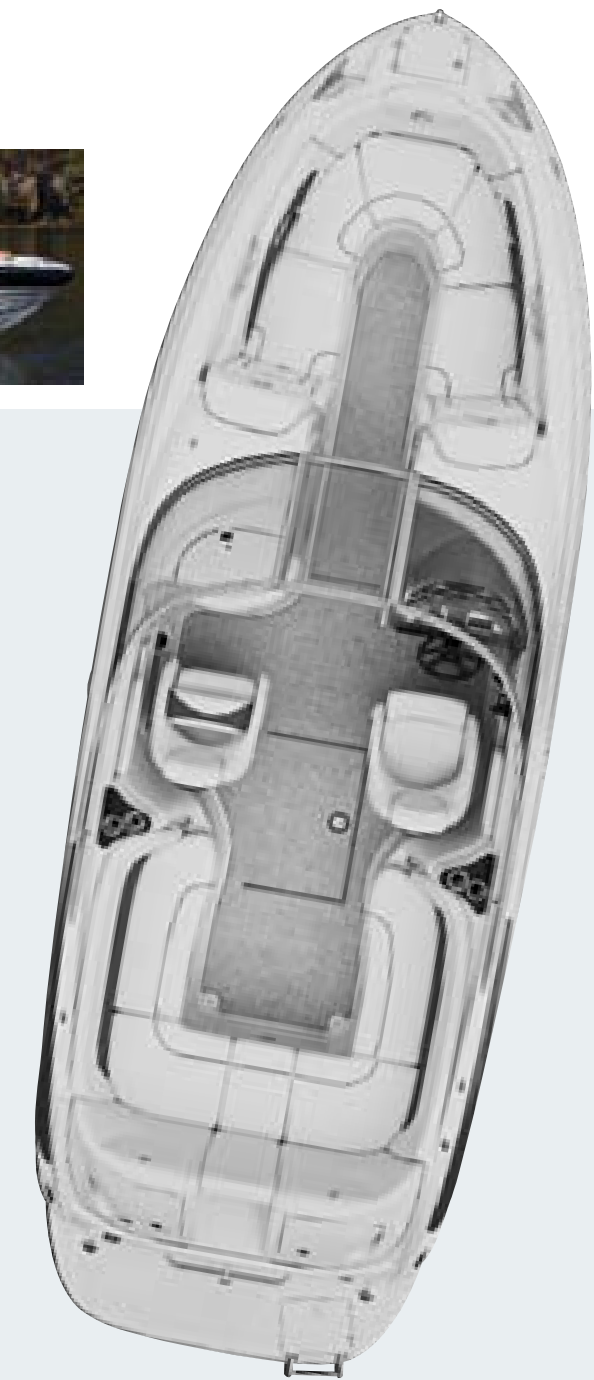


Stainless Steel recessed docking lights.





260 LS



STANDARD FEATURES

HULL & DECK

- 15 gallon fresh water tank
- Automatic bilge pumps (3), 2 w/manual override
- Center transom cockpit entry w/fillers
- Cockpit coolers, carry on (2)
- Diamond anti-skid surface
- Electric horn

- Engine hour meter
- Fire extinguisher
- Fully integrated fiberglass cockpit liner
- Gelcoat - premium two-tone Armorcote gelcoat pattern (narrow hull band) or solid Moonstone
- Navigation lights

- Pressure treated marine panels w/transerable lifetime warranty
- Rack-&-pinion steering
- Storage, bow - abundant in-floor storage, carpeted storage under port & starboard bow seats

- Storage, cockpit - in-floor lockable finished storage, finished aft bench storage
- Tilt steering wheel
- Transhield shipping cover

VALUE ADDED STANDARD FEATURES

HULL & DECK

- Automatic fire extinguishing system
- Battery charger (three step auto.)
- Canvas - color-keyed bow & cockpit or exchange for Westland one-piece mooring cover (color matched)
- Canvas - stand-up bimini top, embroidered boot, quick disconnect hardware, retractable legs & S/Steel tubing
- Carpet - snap-in, cockpit
- Cleats - S/Steel 6" pull-up, oversized (6)
- Crystal cap letters w/Crownline logo

- Depth sounder w/outside air & water temp.
- Docking lights (chrome)
- Dual battery switch
- Extended swim platform - full beam wrap-around w/handle & four step boarding ladder w/diamond non-skid & etched logo
- F.A.S.T. Tab®, vented hull chine w/reversed chines & delta performance pad
- Interior - tri-color Platinum interior design w/"Hot Tub" style reclined bow lounge seats, U-shape cockpit w/two newly designed SSS (Suspension System Seating) flip-up bucket seats & color coordinated shields w/logos

- Full instrumentation - deluxe reduced glare, fog resistant gauges w/S/Steel bezels & lifetime warranty
- Grab handles - S/Steel
- Low glare dash - driver & passenger side
- Premium smooth-actuation throttle & shift cables
- Shower - hand held freshwater, (cold)
- S/Steel rub rail insert w/white extrusion
- Stereo - Sony marine stereo w/single disc player & 4 speakers w/auxiliary input jack for I-Pod/MP3 player

- S/Steel cupholders
- S/Steel Crownline transom nameplate w/ski tow rail & eye
- S/Steel windshield braces
- S/Steel shocks for sundecks & lids

HEAD

- Enclosed head compartment w/sink & electric exhaust vent
- Porcelain head w/holding tank

Five Year Powertrain & Engine Warranty

Overall Length: 26'6" / 8.1M Beam: 102" / 2.59M
Standard U-wrap Interior



"Hot Tub" style reclined bow seats w/optional flip-up arm rests.



The storage areas beneath the bow seats are large enough to accommodate wakeboards and skis.



Enclosed head compartment with electric exhaust vent, opening screened portlight, sink and porcelain head.



S/Steel Crownline transom nameplate w/ski tow rail & eye.

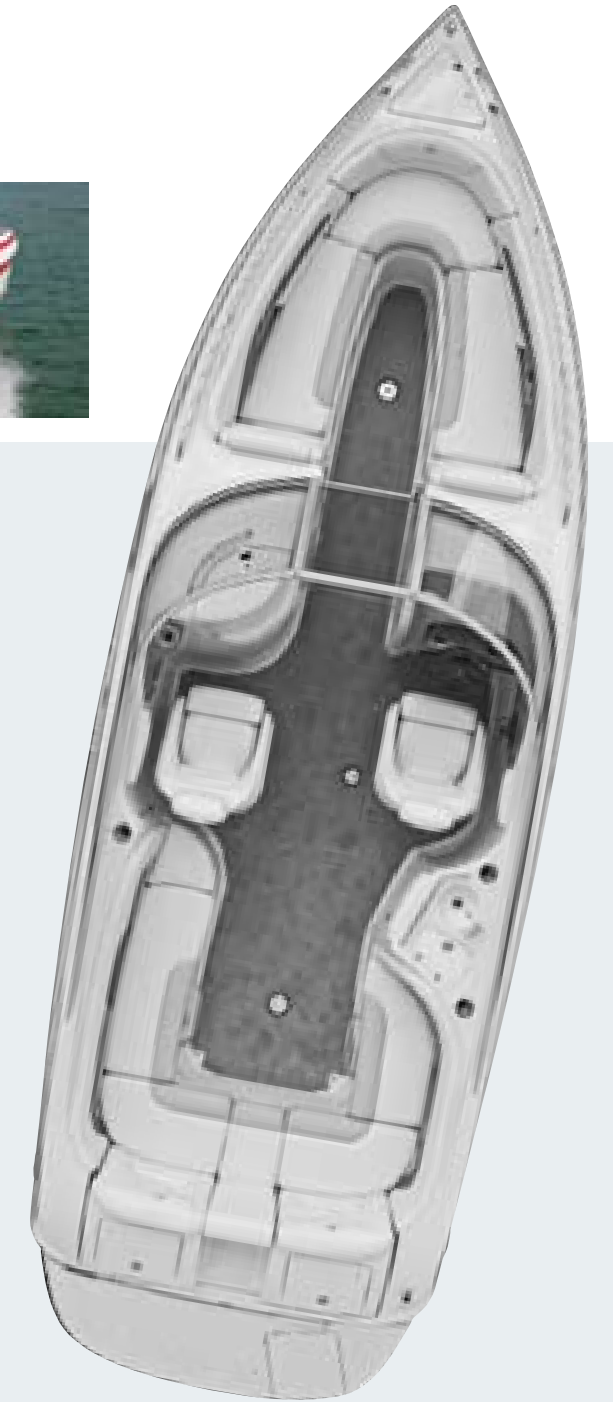
SPECIFICATIONS

14 PERSON CAPACITY	FUEL CAPACITY	MAXIMUM ENGINE	DRY WEIGHT	DRAFT	DEADRISE	ANGLE OF ENTRY AT BOW	BRIDGE CLEARANCE
2005 lbs/909kg	75 Gal /284L	425 HP	5600-5800 lbs 2540-2631kg	24"/39" 61cm/99cm	21°	39°	69" /1.75M

270 BR



Shown in Moonstone /Ruby with Diamond graphics



STANDARD FEATURES

- Anchor and rope locker
- Automatic bilge pump w/manual override
- Bow walk thru doors - fully recessed
- Center transom cockpit entry
- Cockpit wetbar
- Cockpit Coolers - 2 built in, 1 carry-on
- Courtesy lights
- Electric horn
- Engine hour meter
- Fiberglass engine cover
- Fire extinguishers (2)
- Glassliner - Fully integrated bow & cockpit fiberglass liner
- In-floor lockable ski & wakeboard storage w/S/Steel hinged lid & removable rubber pad
- Navigation lights
- Portable toilet, enclosed w/light, electric vent, openable screened portlight & sink, & padded exterior
- Pressure treated marine panels w/transferable lifetime warranty
- Rack-&-Pinion steering
- S/Steel vents
- Tilt steering wheel
- Twin transom storage compartments
- Transhield shipping cover
- 12V receptacles (2)
- Windshield - Curved tinted, safety glass, walk-thru

VALUE ADDED STANDARD FEATURES

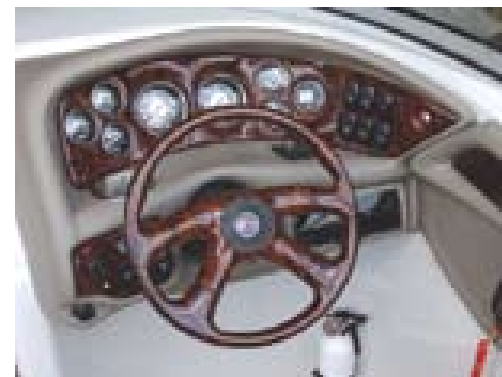
- Canvas - color-keyed bow & cockpit canvas or exchange for Westland one-piece mooring cover (color matched)
- Color-keyed stand-up bimini top, embroidered boot, quick disconnect hardware, retractable legs & S/Steel tubing
- Cleats - (6) S/Steel 6" pull up (bow, mid-ship & aft) cleats
- Cockpit table - portable w/two bases
- Crystal cap letters w/Crownline logo
- Depth sounder w/outside air & water temp.
- Dual battery switch
- Extended swim platform
- Fresh water system - 20 gallon capacity
- Full instrumentation - deluxe reduced glare, fog resistant gauges w/S/Steel bezels & lifetime warranty
- Fully recessed, hidden S/Steel four step telescoping ladder
- Gelcoat - premium two-tone Armorcote gelcoat (narrow hull band/middle deck band) or solid Moonstone
- Grab handles - S/Steel
- Interior layout - tri-color Platinum interior-U-shape w/two newly designed flip-up buckets w/SSS (Suspension System Seating)
- Premium smooth-actuation throttle & shift cables
- Pressurized water system
- Snap-in carpet
- S/Steel cupholders
- S/Steel bow & ski tow eye
- S/Steel rub rail insert w/white extrusion
- S/Steel welded bow rail- 1" dia. 316L Stainless
- S/Steel shocks for bench seat & lids
- Stereo - Sony marine stereo w/single disc player & 4 speakers w/auxiliary input jack for I-Pod/MP3 player
- Trash receptacle
- Walk-thru door

Five Year Powertrain & Engine Warranty

Overall Length: 28'3" / 8.62M Beam: 102" / 2.59M
Standard U-shape Interior

SPECIFICATIONS

FUEL CAPACITY	MAXIMUM ENGINE	DRY WEIGHT	DRAFT	DEADRISE	ANGLE OF ENTRY AT BOW	BRIDGE CLEARANCE
84 Gal /318L	425 HP	5300-5500 lbs 2404-2495kg	21"/38" 53.3cm/97cm	23°	37°	68" /1.73M



Helm shown with woodgrain dash and full wood wheel.



Oversized head features opening portlight, electric vent, light, sink and shower.



U-wrap interior includes walk-thru filler cushions and portable table as standard equipment.



In-floor lockable ski and wakeboard storage.



Shown in Moonstone/Onyx with Executive gelcoat and crystal cap letters and logo.

300 LS



Standard J-wrap Interior

Optional Island Sunpad Interior

Overall Length: 30'6" / 9.3M Beam: 9'4" / 2.87M

Five Year Powertrain & Engine Warranty

STANDARD FEATURES

- 12V receptacles
- Anchor rope locker
- Automatic bilge pumps (3) - two w/manual override
- Bow walk thru curtain
- Coaming boxes
- Cockpit coolers - 2 built in, 1- 48 quart carry-on
- Courtesy lights
- Electric horn
- Engine hour meter
- Fiberglass engine cover
- Fire extinguishers (2)
- Full instrumentation - deluxe reduced glare, fog resistant gauges w/S/Steel bezels & lifetime warranty
- Fully recessed, hidden S/Steel four step telescoping ladder
- Gelcoat - premium two-tone Armorcote gelcoat (narrow hull band) or solid Moonstone
- Glassliner - fully integrated bow & cockpit fiberglass liner
- Helm - non-glare finish w/lighted storage
- In-floor lockable ski & wake board storage w/hinged lid
- Navigation lights
- Pressure treated marine panels w/transferable lifetime warranty
- Rack-&-pinion tilt steering
- Trash receptacle
- Transom cockpit entry gate
- Transhield shipping cover
- Windshield - curved tinted, safety glass, w/walk-thru

VALUE ADDED STANDARD FEATURES

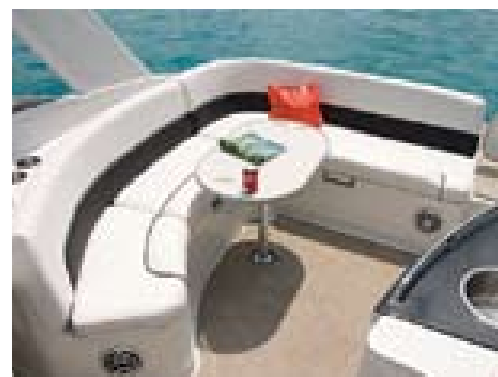
- Aft-facing swim platform seating
- Automatic fire extinguishing system w/indicator
- Battery charger (three step auto)
- Canvas - color-keyed bow & cockpit or exchange for Westland one-piece mooring cover (color-matched)
- Canvas - color-keyed stand-up bimini top, embroidered boot, quick disconnect hardware, retractable legs & S/Steel tubing
- Cleats - (6) S/Steel 8" pull up (bow, mid-ship, aft)
- Cockpit refrigerator w/S/Steel finish
- Cockpit table - portable w/two bases
- Cockpit wetbar w/S/Steel sink & rail
- Compass
- Crystal cap letters w/Crownline logo
- Depth sounder w/outside air & water temp.
- Docking lights
- Dual battery switch
- Electric lift engine hatch w/secondary "Quick Charge" terminal
- Executive wheel - (black wheel w/polished aluminum spokes)
- Extended swim platform - full beam wrap-around w/handle & four step boarding ladder w/diamond non-skid & etched logo
- F.A.S.T. Tab®, vented hull chine w/reversed chines & delta performance pad
- Fresh water system - 15 gal. capacity
- Handheld shower - freshwater, cold
- Head - enclosed w/light, electric vent, openable screened portlight, S/Steel sink, woodgrain cabinet, vacu-flush w/waste level indicator & padded exterior
- Interior layout - tri-color Platinum interior, "Hot Tub" style reclined bow lounge seats, J-shape cockpit seating w/two newly designed SSS (Suspension System Seating) flip-up bucket seats w/color-matched shields & logos
- Karadon cockpit & head compartment inserts
- Keychain remote control for courtesy lights
- Premium smooth-actuation throttle & shift cables
- Pressurized water system
- Snap-in carpet
- S/Steel anchor roller
- S/Steel bow & stern eyes
- S/Steel cupholders
- S/Steel gate w/etched logo inset
- S/Steel grab handles
- S/Steel Crownline transom nameplate w/ski tow rail & eye
- S/Steel rub rail insert w/white extrusion
- S/Steel shocks for hatches & lids
- S/Steel windshield header
- Stereo - new Sony marine stereo-splash proof, flip-down faceplate, remote & changer capability, 52 watts X 4 power, auxiliary input for I-Pod & MP3 players
- Speakers - Kicker marine splash proof stereo speakers - 2 in bow, 4 in cockpit
- Trim tabs w/Indicators

SPECIFICATIONS

FUEL CAPACITY	MAXIMUM ENGINE	DRY WEIGHT		DRAFT	DEADRISE	ANGLE OF ENTRY AT BOW	BRIDGE CLEARANCE
84 gal /318L	425 HP (SINGLE)	7,600-7,800 lbs <small>(SINGLE)</small>	3447-3538kg	24"/41" <small>(SINGLE)</small> 61cm/104cm	24°	39°	8'8"/2.68M <small>(W/KEELBOARD TOWBAR)</small>
	600HP (TWIN)	8,700-8,900 lbs <small>(TWIN)</small>	3946-4037kg	24"/34" <small>(TWIN)</small> 61cm/86cm			8'4"/2.56M <small>(W/ARCH)</small>



"Hot Tub" style reclined bow seating with deep, abundant storage beneath. Shown with optional flip up arm rests.



Standard J-shape cockpit includes a portable table and wetbar with S/Steel sink and rail.



Head compartment features woodgrain cabinetry, S/Steel sink, opening portlight, electric vent and vacu-flush w/waste indicator.



Full beam wrap around extended swim platform with aft facing bench seating and stainless steel Crownline nameplate.



Shown in Moonstone/Ruby with Executive gelcoat and crystal cap letters and logo.

320 LS



Overall Length: 32'5" / 9.9M Beam: 9'8" / 2.95M
Standard Interior with dual transom entryways and rear starboard filler cushion

STANDARD FEATURES

- 25 gallon fresh water tank
- Automatic bilge pumps (3), two w/manual override
- Center windshield door w/twin locking arm
- Cockpit cooler - carry-on
- Cockpit trunk storage - oversized
- Curved tinted safety glass walk-thru windshield
- Diamond anti-skid surface w/dockside water receptacle w/pressurized water system
- Engine hour meter
- Fire extinguishers (one in the cockpit, one in the cabin)
- Forward in-floor storage
- Easy dual transom cockpit entry
- Fully integrated cockpit fiberglass liner
- Low glare dash
- Navigation lights
- Pressure treated boat panel w/transferable lifetime warranty
- Rack-&-pinion steering
- S/Steel ski tow eye
- Tilt steering wheel
- Transhield shipping cover
- Cabin lighting, S/Steel w/finger tip dimming
- Choice of designer fabrics
- Color coordinated throw pillows
- Companionway lockable door
- Custom cabinets w/luxurious cherry wood finish
- Premium vinyl
- Storage areas
- Tinted deck hatch (20") w/screen & shade
- Trash receptacle
- Vinyl headliner
- CO detector
- 12 V / 110 V receptacles
- CO detector
- Enclosed head compartment w/shower, sink, vanity, shower sump pump, electric exhaust vent, screened opening portlight & vacu-flush w/waste level indicator
- Exhaust vent, electric
- Hanging locker w/mirrored door

VALUE ADDED STANDARD FEATURES

- Automatic fire extinguishing system w/indicator
- Adjustable flip-up double helm seat w/oversized finished fiberglass storage area under bench
- Aft bench seat converts to sunbed
- Anchor pulpit roller - polished S/Steel
- Bow flip-up, heavy duty arm rests
- Canvas - color-keyed bow & cockpit or exchange for Westland one-piece mooring cover (color matched)
- Canvas - color-keyed stand-up bimini top, embroidered boot, quick disconnect hardware, retractable legs & S/Steel tubing
- Cockpit table (portable w/forward base only & designated storage area)
- Cockpit wetbar w/sink, faucet & handrail, Karadon top & 12V receptacle
- Compass
- Crystal cap letters w/Crownline logo
- Depth sounder w/outside air & water temp.
- Docking lights - (chrome)
- Dockside power inlet
- Dual battery switch
- Electric lift engine hatch w/secondary "Quick Charge" terminal
- Extended swim platform - full beam wrap-around w/handle & four step boarding ladder w/diamond non-skid & etched logo
- F.A.S.T. Tab®, vented hull chine w/reversed chines & delta performance pad
- Full instrumentation - deluxe reduced glare, fog resistant gauges w/S/Steel bezels & lifetime warranty
- Galvanic isolator
- Gelcoat - premium two-tone Armorcote gelcoat (narrow hull band) or solid Moonstone
- High water alarm system - audio/visual
- Premium smooth-actuation throttle & shift cables
- Shore power w/battery charger & 50' cord
- Shower - hand held freshwater, hot & cold
- Snap-in cockpit carpet
- Stereo - premium Sony marine stereo w/removable face plate, remote at helm & transom, changer capability, 52 watts per channel, MP3 & Atrac3 Playback, XM & Sirius Satellite ready & auxiliary input for I-POD & MP3
- S/Steel 8" pull-up, oversized cleats (6)
- S/Steel bow rails - 1" dia., 316L Stainless
- S/Steel cupholders
- S/Steel grab handles throughout
- S/Steel gates w/etched logo inset
- S/Steel shocks for sundecks & lids
- S/Steel rub rail insert w/white extrusion
- S/Steel refrigerator (cockpit) - 12V / 110V
- S/Steel top windshield header
- Trim tabs
- Trim tab indicators
- Water heater
- Woodgrain dash & full wood wheel
- Microwave

Five Year Powertrain & Engine Warranty

SPECIFICATIONS

FUEL CAPACITY	MAXIMUM ENGINE	DRY WEIGHT	DRAFT	DEADRISE	ANGLE OF ENTRY AT BOW	BRIDGE CLEARANCE
139 Gal /526L	640HP (TWINS)	9100-9500 Lbs 4128-4309Kg	26"/38" 56cm/97cm	23°	39°	72" /1.8M (w/O ARCH)



Oversized trunk storage with designated area to stow away cockpit table.



Forward cabin bulkhead houses the stereo controls, shore power panel, circuit breakers, AC controls, 120 V receptacle and microwave.



The aft bench seat easily converts to a relaxing sunbed.



Reclined passenger lounge seat with S/Steel cupholder.

DECKBOATS

220 EX

240 EX

252 EX

260 EX

262 EX

*Crownline deckboats
are designed and built
to provide boaters with
the agility of a sport
boat and a touch of
stateroom comfort
and convenience.*





Shown in Moonstone/Onyx with Razor graphics and color matched deck vents

220 EX



Overall Length: 22'6" / 6.9M Beam: 102" / 2.59M
Standard EX Interior

STANDARD FEATURES

- Automatic bilge pump w/manual override
- Courtesy lights
- Curved tinted safety glass walk-thru windshield
- Diamond anti-skid surface
- Electric horn
- Engine hour meter
- Fiberglass engine cover w/service step
- Fire extinguisher
- Helm storage area
- In-floor lockable ski & kneeboard storage w/S/Steel hinged lid & removable protective pad, & additional ski storage under starboard bow cushions
- Laserwave dash insert
- Navigation lights
- Pressure treated marine panels w/transferrable lifetime warranty
- Rack-&-pinion steering
- Seating - L-wrap
- S/Steel hardware, welded rail w/ski tow eye
- Tilt steering wheel
- Transhield shipping cover

VALUE ADDED STANDARD FEATURES

- 12 volt receptacle
- Aft convertible sun lounge w/three positions & S/Steel hand rail
- Anchor/rope storage compartment w/protective mat
- Bow cooler - removeable 25 quart chest cooler
- Carpet - snap-in cockpit carpet
- Cleats - (6) S/Steel 6" pull-up cleats (incl. 2 mid-ship)
- Canvas - color-keyed bow & cockpit canvas or exchange for Westland one-piece mooring cover (color matched)
- Color-keyed stand-up bimini top, embroidered boot, quick disconnect hardware, retractable legs & S/Steel tubing
- Crystal cap letters w/Crownline logo
- Depth sounder w/outside air & water temp.
- Docking lights - fully recessed
- Extended swim platform - full beam wrap-around w/handle & four step boarding ladder w/diamond non-skid & etched logo
- F.A.S.T. Tab®, vented hull chine w/reversed chines & delta performance pad
- Forward boarding ladder
- Full instrumentation - deluxe fog resistant, reduced glare gauges w/S/Steel bezels & lifetime warranty
- Gelcoat - premium two-tone Armorcote gelcoat (narrow hull band) or solid Moonstone
- Glassliner - fully integrated bow & cockpit fiberglass liner
- Grab handles - S/Steel
- Head - portable toilet, enclosed w/light, sink w/shower & portlight
- Premium smooth-actuation throttle & shift cables
- Pressurized water system w/15 gallon freshwater tank
- S/Steel cupholders
- S/Steel shocks for engine hatch & lids
- S/Steel rub rail insert w/black or white extrusion
- S/Steel bow rails - 1" dia., 316L Stainless
- Stereo - Sony marine stereo w/single disc player & 4 speakers w/auxiliary input jack for I-Pod / MP3 player
- Two newly designed flip-up bucket seats w/SSS (Suspension System Seating), color matched shields w/logos
- Wetbar w/sink, add'l 12V receptacle & storage box

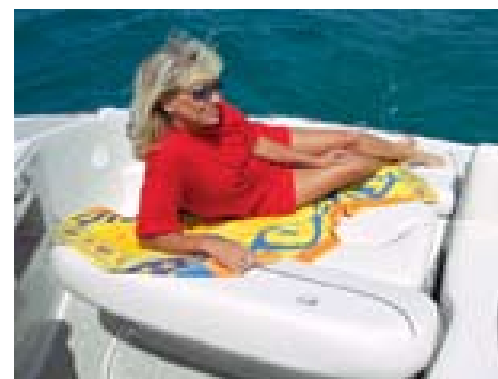
Five Year Powertrain & Engine Warranty



Portable toilet with light, sink and shower.



The large storage compartments under the bow seats are perfect for ski & wakeboard storage.



The aft bench seat folds down to form a comfortable sunbed without the use of filler cushions.



Helm features include full instrumentation w/lifetime warranty. Shown here with color-matched dash and wheel insert.

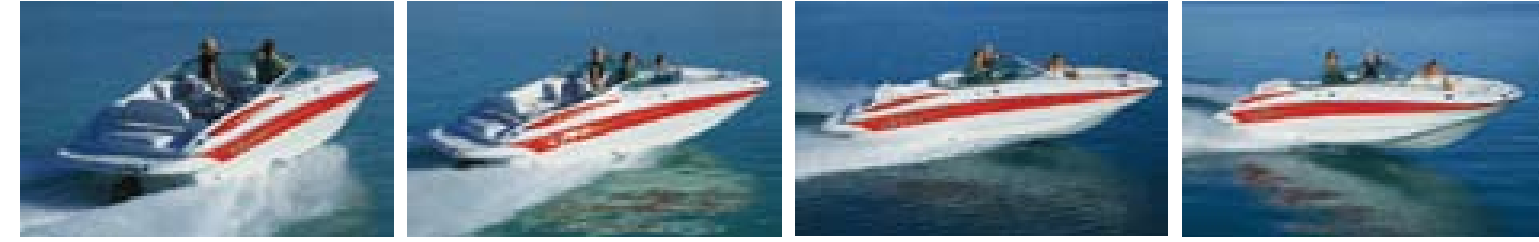
SPECIFICATIONS

10 PERSON CAPACITY	FUEL CAPACITY	MAXIMUM ENGINE	DRY WEIGHT	DRAFT	DEADRISE	ANGLE OF ENTRY AT BOW	BRIDGE CLEARANCE
1442 lbs/654kg	45 Gal /170L	320 HP	4200-4400 lbs 1928-1996kg	20"/34" 51cm/86cm	19°	39°	56"/1.42M

240 EX



Shown in Moonstone/Ruby with narrow hull band, optional color-matched deck vents and Diamond graphics.



STANDARD FEATURES

- Anchor/rope storage compartment w/protective mat
- Automatic bilge pump w/manual override
- Bow cooler w/drain
- Cooler - Easy access carry-on insulated cooler
- Courtesy lights
- Diamond anti-skid surface
- Electric horn
- Engine hour meter
- Fiberglass engine cover w/service step
- Fire extinguisher
- Glassliner - fully integrated bow & cockpit fiberglass liner
- In-floor lockable ski & kneeboard storage w/hinged lid & removable protective pad, & additional ski storage under starboard bow cushion
- Laserwave dash insert
- Navigation lights
- Pressure treated marine panels w/transferable lifetime warranty
- Rack-&-pinion steering
- S/Steel hardware, welded rail w/ski tow eye
- Tilt steering wheel
- Transshield shipping cover
- Wrap around seating

VALUE ADDED STANDARD FEATURES

- 12 volt receptacle - cockpit
- Aft convertible sun lounge w/three positions & S/Steel hand rail
- Carpet - snap-in cockpit carpet
- Cleats - (6) S/Steel 6" pull up cleats (incl. 2 mid-ship)
- Canvas - color-keyed bow & cockpit canvas or exchange for Westland one-piece mooring cover (color matched)
- Color-keyed stand-up bimini top, embroidered boot, quick disconnect hardware, retractable legs & S/Steel tubing
- Crystal cap letters w/Crownline logo
- Curved, tinted safety glass three-piece walk-thru windshield
- Depth sounder w/outside air & water temp.
- Docking lights, fully recessed
- Extended swim platform - full beam wrap-around w/handle & four step boarding ladder w/diamond non-skid & etched logo
- F.A.S.T. Tab®, vented hull chine w/reversed chines & delta performance pad
- Flush fit bow closeout door
- Full instrumentation - deluxe fog resistant, reduced glare gauges w/S/Steel bezels & lifetime warranty
- Gelcoat - premium two-tone Armorcote gelcoat pattern (narrow hull band) or solid Moonstone
- Grab handles - S/Steel
- Head - portable toilet, enclosed w/light, opening screened portlight window & sink w/shower
- Hidden telescoping S/Steel four step boarding ladder at bow
- Premium smooth-actuation throttle & shift cables
- Pressurized water system w/15 gallon freshwater tank
- S/Steel cupholders
- S/Steel bow rails - 1" dia., 316L Stainless
- S/Steel rub rail insert w/black or white extrusion
- S/Steel shocks for engine hatch & lids
- Stereo - Sony marine stereo w/single disc player & 4 speakers w/auxiliary input jack for I-Pod / MP3 player
- Two newly designed flip-up bucket seats w/SSS (Suspension System Seating), color matched shields w/logos
- Wetbar w/sink, poly counter top, sea rail & storage & add'l 12V receptacle



Overall Length: 24'6" / 7.47M Beam: 102" / 2.59M
Standard EX Interior

Five Year Powertrain & Engine Warranty



The generous, comfortable bow seating area is shown with optional portable table in place.



The large storage compartments under the bow seats are perfect for ski and wakeboard storage.



The aft bench seat folds down to form a comfortable sunbed without the use of filler cushions.



The in-floor lockable ski & wakeboard storage area has a hinged lid and removable protective pad.

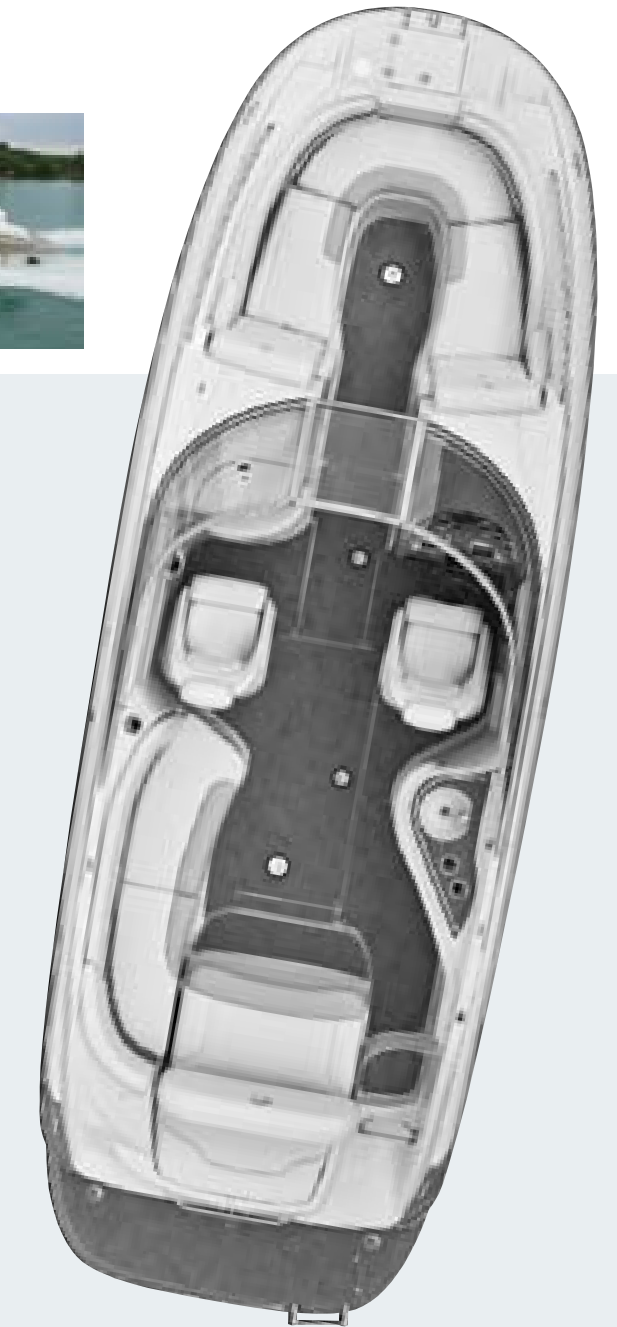
SPECIFICATIONS

13 PERSON CAPACITY	FUEL CAPACITY	MAXIMUM ENGINE	DRY WEIGHT	DRAFT	DEADRISE	ANGLE OF ENTRY AT BOW	BRIDGE CLEARANCE
2065 lbs/937kg	50 Gal /189L	320 HP	4800-5000 lbs 2177-2268kg	21"/35" 53cm/89cm	19°	39°	58.25"/1.48M

252 EX



Shown in Moonstone/Moonrock with Executive gelcoat and color-matched swim platform.



STANDARD FEATURES

- Anchor/rope storage compartment w/protective mat
- Automatic bilge pump w/manual override
- Bow cooler w/drain
- Cooler - easy access carry-on insulated cooler
- Courtesy lights
- Diamond anti-skid surface
- Electric horn
- Engine hour meter
- Fiberglass engine cover w/service step
- Fire extinguisher
- Glassliner - fully integrated bow & cockpit fiberglass liner
- In-floor lockable ski & wakeboard storage w/S/Steel hinged lid & removable protective pad, & additional ski storage under starboard bow cushions
- Laserwave dash insert
- Navigation lights
- Pressure treated marine panels w/transferable life time warranty
- Rack-&-pinion steering
- S/Steel hardware, welded rail w/ski tow eye
- Tilt steering wheel
- Transshield shipping cover
- Wrap around seating in a soft-C design

VALUE ADDED STANDARD FEATURES

- 12 volt receptacle-cockpit
- Aft convertible sun lounge w/three positions & S/Steel hand rail
- Carpet - snap-in cockpit carpet
- Cleats - (6) S/Steel 6" pull up cleats (incl. 2 mid-ship)
- Canvas - color-keyed bow & cockpit canvas or exchange for Westland one-piece mooring cover (color matched)
- Color-keyed stand-up bimini top, embroidered boot, quick disconnect hardware, retractable legs & S/Steel tubing
- Crystal cap letters w/Crownline logo
- Curved, tinted safety glass three-piece walk-thru windshield
- Depth sounder w/outside air & water temp.
- Docking lights
- Extended swim platform - full beam wrap-around w/handle & four step boarding ladder w/diamond non-skid & etched logo
- F.A.S.T. Tab®, vented hull chine w/reversed chines & delta performance pad
- Flush fit bow closeout door
- Full instrumentation - deluxe fog resistant, reduced glare gauges w/S/Steel bezels & lifetime warranty
- Gelcoat - premium two-tone Armorcote gelcoat pattern (narrow hull band) or solid Moonstone
- Grab handles - S/Steel
- Head - portable toilet, enclosed w/light, opening screened portlight window & sink w/shower
- Hidden telescoping S/Steel four step boarding ladder at bow
- Premium smooth-actuation throttle & shift cables
- Pressurized water system w/15 gallon freshwater tank
- S/Steel cupholders
- S/Steel bow rails - 1" dia., 316L Stainless
- S/Steel rub rail insert w/black or white extrusion
- S/Steel shocks for engine hatch & lids
- Stereo - Sony marine stereo w/single disc player & 4 speakers w/auxiliary input jack for I-Pod/MP3 player
- Two newly designed flip-up bucket seats w/SSS (Suspension System Seating), color matched shields w/logos
- Wetbar w/sink, cooler storage w/doors, poly counter top, sea rail & storage & add'l 12V receptacle

Overall Length: 25'6" / 7.70M Beam: 102" / 2.59M
Soft-C Wrap Around Interior

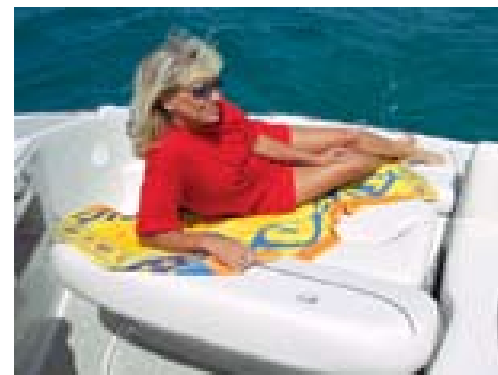
Five Year Powertrain & Engine Warranty



The enclosed head compartment provides privacy and convenience with a portable toilet, opening portlight, sink, light and shower.



"Hot Tub" style reclined bow seats, shown with optional flip up arm rests.



The aft bench seat offers three comfortable seating options, fully upright, reclined or flat.



The roomy "entertainment friendly" soft-C cockpit layout is shown here with the optional portable table in place.

SPECIFICATIONS

13 PERSON CAPACITY	FUEL CAPACITY	MAXIMUM ENGINE	DRY WEIGHT	DRAFT	DEADRISE	ANGLE OF ENTRY AT BOW	BRIDGE CLEARANCE
2065 lbs/937kg	50 Gal /189L	425 HP	5100-5300 lbs 2313-2404kg	21"/35" 53cm/89cm -	19°	39°	60"/1.52M



262 EX shown in Moonstone/Spinel wine with optional color-matched deck vents and Mondial graphics.

260/262 EX



262 EX
Standard EX Interior w/two
SSS flip-up bucket seats

260 EX
Standard EX Interior with SSS driver flip-up
bucket and passenger lounge

Overall Length: 26'6" / 8M Beam: 102" / 2.59M

Five Year Powertrain & Engine Warranty

jack for I-Pod/MP3 player
• Wetbar w/sink, sea rail &
storage & add'l 12V
receptacle

STANDARD FEATURES

- Anchor/rope storage compartment w/protective mat
- Automatic bilge pump w/manual override
- Bow cooler w/drain
- Cooler - Easy access carry-on insulated cooler
- Courtesy lights
- Diamond anti-skid surface
- Electric horn
- Engine hour meter
- Fiberglass engine cover w/service step
- Fire extinguisher
- Glassliner - fully integrated bow and cockpit fiberglass liner
- In-floor lockable ski & wakeboard storage w/hinged lid
- Laserwave dash insert
- Navigation lights
- Pressure treated marine panels w/transferable lifetime warranty
- Rack-&-pinion steering
- S/Steel hardware, welded rail w/ski tow eye
- S/Steel head door grab rail
- Tilt steering wheel
- Transhield shipping cover
- Wrap around seating

VALUE ADDED STANDARD FEATURES

- 12 volt receptacle-cockpit
- Aft convertible sun lounge w/three positions & S/Steel hand rail
- Carpet - snap-in cockpit carpet
- Cleats - (6) S/Steel oversized 8" pull up cleats (incl. 2 mid-ship)
- Canvas - color-keyed bow & cockpit canvas or exchange for Westland one-piece mooring cover (color matched)
- Color-keyed stand-up bimini top, embroidered boot, quick disconnect hardware, retractable legs & S/Steel tubing
- Crystal cap letters w/Crownline logo
- Curved, tinted safety glass three-piece walk-thru windshield
- Depth sounder w/outside air & water temp.
- Docking lights, fully recessed
- Extended swim platform - full beam wrap-around w/handle & four step boarding ladder w/diamond non-skid & etched logo
- F.A.S.T. Tab®, vented hull chine w/reversed chines & delta performance pad
- Flush fit bow closeout door
- Full instrumentation - deluxe fog resistant, reduced glare gauges w/S/Steel bezels & lifetime warranty
- Gelcoat - premium two-tone Armorcote gelcoat pattern (narrow hull band) or solid Moonstone
- Grab handles - S/Steel
- Head - portable toilet, enclosed w/light, opening screened portlight window & sink w/shower
- Hidden telescoping S/Steel four step boarding ladder at bow
- Two newly designed flip-up bucket seats w/SSS (Suspension System Seating) & color matched shields /logos (262 EX)
- Newly designed flip up driver bucket seat w/SSS (Suspension System Seating) & color matched shield w/logo & passenger lounge (260 EX)
- Premium smooth-actuation throttle & shift cables
- Pressurized water system w/15 gallon freshwater tank
- S/Steel bow rails - 1" dia., 316L Stainless
- S/Steel cupholders
- S/Steel rub rail insert w/black or white extrusion
- S/Steel shocks for engine hatch & lids
- Stereo - Sony marine stereo w/single disc player & 4 speakers w/auxiliary input

SPECIFICATIONS

14 PERSON CAPACITY	FUEL CAPACITY	MAXIMUM ENGINE	DRY WEIGHT	DRAFT	DEADRISE	ANGLE OF ENTRY AT BOW	BRIDGE CLEARANCE
2205 lbs/1000kg	75 Gal /284L	425 HP	5400-5600 lbs 2452-2540kg	21"/35" 53cm/89cm	19°	39°	65"/1.7M



Head compartment provides a sink, shower, light and screened opening portlight. Optional Karadon vanity top and porcelain head.



Stow away your skis, wakeboards and other boating toys in the lockable in-floor storage area.



The aft bench seat conveniently folds down to form a comfortable sunbed without the use of filler cushions.



There's plenty of additional storage for skis and wakeboards under the bow seats.



CUDDIES

230 CCR

255 CCR

275 CCR

*Crownline cuddies
are designed and built
to provide boaters with
the agility of a sport
boat and a touch of
stateroom comfort
and convenience.*





Shown in Moonstone/Onyx with Executive gelcoat and crystal cap letters and logo

230 CCR



STANDARD FEATURES

- Adjustable cabin lighting
- Automatic bilge pump w/manual override
- Cabin galley w/sink
- Cabin & cockpit courtesy lights
- Color coordinated pillows
- Easy access insulated cooler
- Easy transom cockpit entry
- Engine hour meter
- Fire extinguisher
- Freshwater holding tank - 10 gallons
- Fully integrated cockpit fiberglass liner
- Molded fiberglass deck access steps
- Navigation lights
- Privacy head compartment w/portable toilet
- Pressure treated marine panels w/transerable lifetime warranty
- Rack-&-pinion steering
- S/Steel hardware & ski tow rail
- Tilt steering wheel
- Tinted deck hatch w/screen
- Transhield shipping cover
- V-berth fillers convertible to seating w/back rest

VALUE ADDED STANDARD FEATURES

- Battery charger - three step automatic
- Canvas - color-keyed stand-up bimini top, embroidered boot, quick disconnect hardware, retractable legs & S/Steel tubing
- Cleats - (6) S/Steel 6" pull-up cleats (incl. mid-ship)
- Cockpit carpet - snap in
- Cockpit cooler storage w/finished doors
- Crystal cap letters w/Crownline logo
- Curved tinted safety glass, walk-thru windshield
- Depth sounder w/outside air & water temp.
- Docking Lights (chrome face)
- Full instrumentation - deluxe reduced glare gauges w/S/Steel bezels & lifetime warranty
- Extended swim platform - full beam wrap-around w/handle & four step boarding ladder w/diamond non-skid & etched logo
- F.A.S.T. Tab®, vented hull chine w/reversed chines & delta performance pad
- Galley w/cherry wood cabinetry, Corian countertop & S/Steel sink
- Gelcoat - premium two-tone Armorcote gelcoat pattern (narrow hull band) or solid Moonstone
- Grab handles - S/Steel
- High water alarm system - audio/visual
- Interior - tri-color platinum interior, L-shape w/adjustable flip up driver & passenger SSS (Suspension System Seating) bucket seats & color matched shield w/logo
- Premium smooth-actuation throttle & shift cables
- Pressurized water system
- Snap-in cockpit carpet
- Sony premium stereo system w/removable face plate, remote & changer capability, 52 watts per channel, MP3 & Atrac3 playback, XM & Sirius satellite ready & auxiliary input for I-Pod & MP3 player
- S/Steel one piece tall bow rail - 1" dia., 316 L stainless
- S/Steel cupholders
- S/Steel rub rail insert w/black or white extrusion
- S/Steel shocks for sundeck & lids
- Vinyl headliner in cabin
- Woodgrain kit (dash & wheel insert)

Five Year Powertrain & Engine Warranty

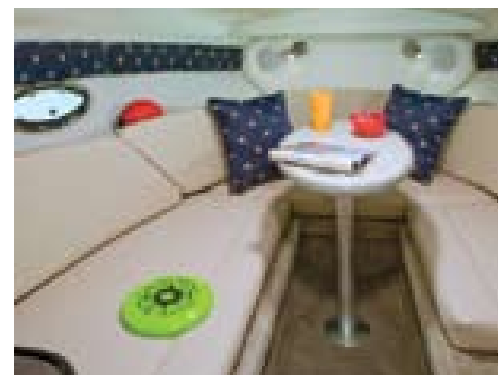
Overall Length: 23'6" / 7.19M Beam: 102" / 2.59M
Standard Extended L-Shape Interior



Highly styled helm station with non-glare surface and S/Steel bezel gauges.



The stern seat easily converts to a comfortable full length sunbed without filler cushions.



The cabin is shown with Nautical Star fabric and portable table in place.



The galley features cherry wood cabinetry with Corian countertop and S/Steel sink.

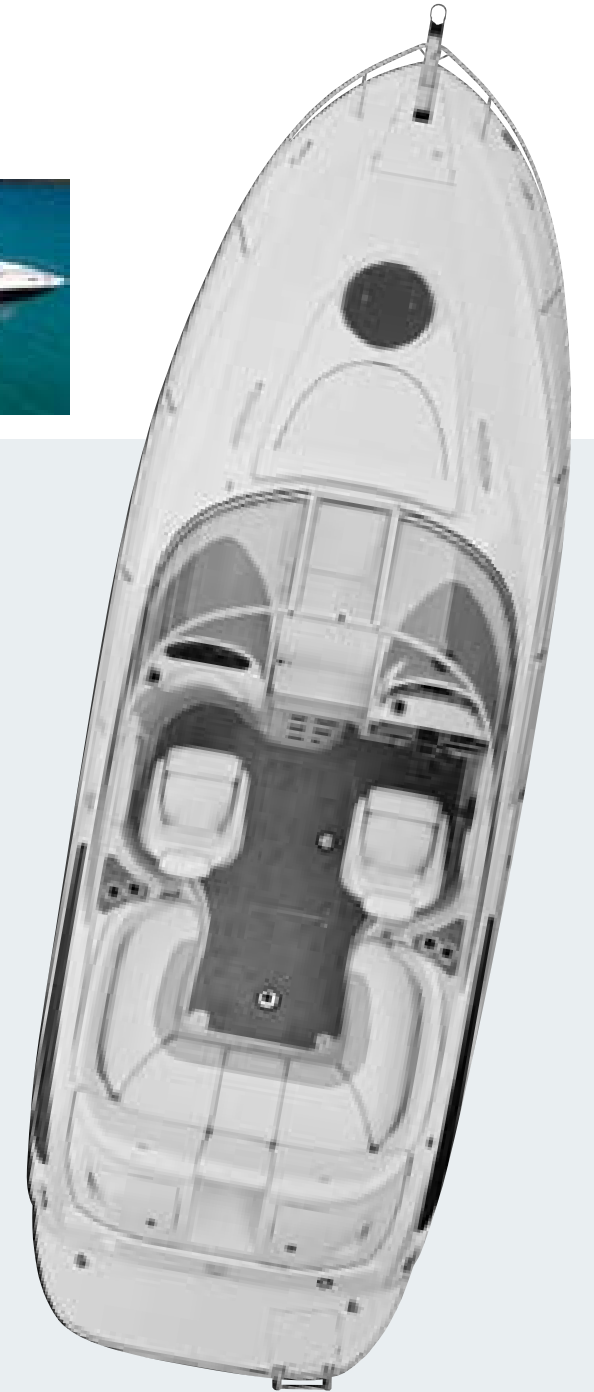
SPECIFICATIONS

8 PERSON CAPACITY	FUEL CAPACITY	MAXIMUM ENGINE	DRY WEIGHT	DRAFT	DEADRISE	ANGLE OF ENTRY AT BOW	BRIDGE CLEARANCE
1160 Lbs/526kg	45 Gal /235L	320 HP	4600-4800 Lbs 2087-2177kg	19"/36" 48cm/92cm	19°	39°	66" /1.68M



Shown in Moonstone/Spinel Wine with color matched deck vents and Mondial graphics. Social swim transom is optional.

255 CCR



Overall Length: 26'6" / 8.1M Beam: 102" / 2.59M

Extended U-wrap Seating
w/Tri-color Platinum Interior

STANDARD FEATURES

- Automatic bilge pumps (3), 2 w/manual override
- Cockpit cooler - carry-on
- Transhield shipping cover
- Diamond anti-skid surface
- Curved tinted safety glass walk-thru windshield
- Engine hour meter
- Fire extinguisher (1 in the cockpit, 1 in the cabin)
- Foredeck sunpad rails (2)
- Fully integrated fiberglass cockpit liner
- Glove Box, drained & lockable
- Graphics - highly visible, safety graphics
- Molded deck access steps
- Navigation lights
- Opening cabin portlight w/screen (2)
- Pressure treated marine panels w/transferable lifetime warranty
- Rack-&-pinion steering
- S/Steel ski tow eye
- S/Steel windshield braces
- Tilt steering wheel
- Gelcoat - premium two-tone Armorcote gelcoat pattern (narrow hull band) or solid Moonstone
- Choice of designer fabrics
- Clothes locker (cabin)
- Color coordinated throw pillows

VALUE ADDED STANDARD FEATURES

- Bucket seats - newly designed flip-up SSS (Suspension System Seating) buckets (2)
- Anchor pulpit roller - polished S/Steel w/S/Steel chain tensioner
- Automatic fire extinguisher system w/indicator
- Bucket seat height adjuster (driver side)
- Canvas - color-keyed full canvas includes stand-up bimini top w/quick disconnect hardware, clear front bimini connector, side & aft curtains, embroidered boot, S/Steel tubing & hardware & retractable legs
- Center transom cockpit entry w/fillers
- Compass
- Crystal cap letters w/Crownline logo
- Depth sounder w/outside air & water temp.
- Dual battery switch
- Extended swim platform - extended beam wrap-around w/handle & four step boarding ladder w/diamond non-skid & etched logo
- F.A.S.T. Tab®, vented hull chine w/reversed chines & delta performance pad
- Full instrumentation - deluxe reduced glare gauges w/S/Steel bezels & lifetime warranty
- High water alarm system - audio/visual
- Low glare dash - driver & passenger side
- Premium smooth-actuation throttle & shift cables
- Pressurized water system
- Shower - hand held freshwater, cold
- Snap-in cockpit carpet
- Stereo - premium Sony marine stereo w/single disc player & 4 speakers - 2 in cabin, 2 in cockpit, & remote at helm - w/auxiliary input jack for I-Pod/MP3 player
- S/Steel cupholders
- S/Steel rub rail insert w/black or white extrusion
- S/Steel shocks for sundeck & lids
- S/Steel grab handles
- S/Steel 8" pull-up, oversized cleats (6)
- S/Steel welded bow rail- 1" dia., 316L Stainless
- S/Steel ski tow rail
- S/Steel windshield braces
- Premium vinyl
- Premium cabin carpet
- Sliding companionway lockable door
- Tinted deck hatch (20") w/screen
- V-berth filler cushions convertible to dinette seating
- Vinyl headliner
- CO detector
- Trash receptacle
- V-berth, upholstered, w/ mirror
- 12V receptacle
- S/Steel windshield header
- Trim tabs
- Woodgrain dash & full wood wheel
- Cabin lighting - S/Steel w/fingertip dimming
- Custom cabinets w/luxurious cherry wood finish
- Custom countertop
- S/Steel sink (cabin)
- 12 V S/Steel refrigerator
- Exhaust vent, electric
- Enclosed head compartment w/shower, sink, vanity & shower sump pump
- Screened, opening portlight in head compartment

Five Year Powertrain & Engine Warranty

SPECIFICATIONS

10 PERSON CAPACITY	FUEL CAPACITY	MAXIMUM ENGINE	DRY WEIGHT	DRAFT	DEADRISE	ANGLE OF ENTRY AT BOW	BRIDGE CLEARANCE
1442 Lbs/654kg	62 Gal /235L	425 HP	6000-6200 lbs 2724-2815kg	24"/39" 61cm/99cm	21°	39°	68" /1.7M <small>(w/o ARCH)</small>



The dining area in the cabin converts easily into a spacious V-berth -the longest forward berth in its class!



The standard stainless steel sink and refrigerator provide convenience and eye catching style.



The optional Social Swim Transom features splash proof speakers (w/amp) and convenient built in fender storage.

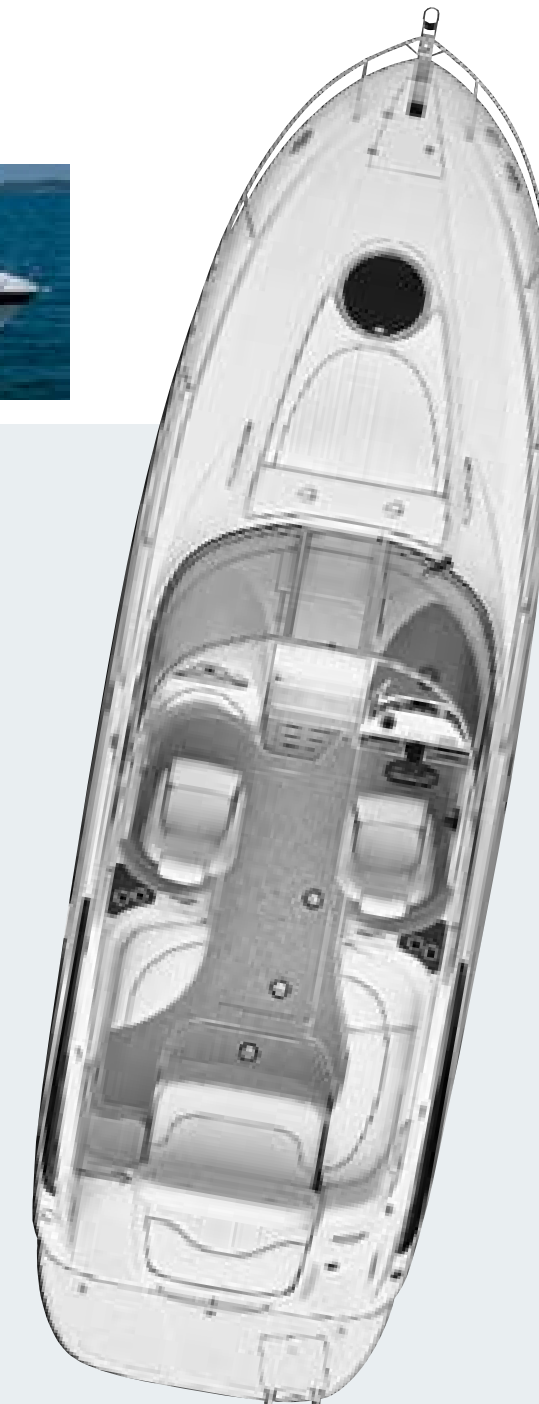


The woodgrain dash and full wood wheel add a touch of elegance to the stylish helm station.



Shown in Moonstone/Onyx with color-matched deck vents and Mondial graphics.

275 CCR



Overall Length: 28'8" / 8.7M Beam: 102" / 2.59M
Standard L-shape Interior

STANDARD FEATURES

- 15 gallon fresh water tank
- Automatic bilge pumps (3), 2 w/manual override
- Cockpit cooler - carry-on
- Diamond anti-skid surface
- Engine hour meter
- Easy transom cockpit entry
- Fire extinguisher (One in the cockpit, one in the cabin)
- Foredeck sunpad rails (2)
- Fully integrated cockpit fiberglass liner
- Low glare dash
- Molded deck access steps
- Navigation lights
- Opening cabin portlight w/screen (2)
- Pressure treated marine panels w/transferrable lifetime warranty
- Rack-&-pinion steering
- Tilt steering wheel
- Transshield shipping cover
- Gelcoat - premium two-tone Armorcote gelcoat pattern (narrow hull band) or solid Moonstone

VALUE ADDED STANDARD FEATURES

- Aft convertible three position sun lounge w/S/Steel rail
- Anchor pulpit roller - polished S/Steel
- Automatic fire extinguisher system w/indicator
- Battery charger
- Bucket seat height adj. - driver side
- Bucket seats - newly designed flip-up SSS (Suspension System Seating) buckets (2)
- Canvas - color-keyed full canvas incl. stand-up top w/quick disconnect hardware, clear front bimini connector, side & aft curtains, embroidered boot, S/Steel tubing & hardware, & retractable legs
- Compass
- Crystal cap letters w/Crownline logo
- Curved tinted safety glass, 3 piece walk-thru windshield
- Depth sounder w/outside air & water temp.
- Dockside power inlet
- Dual battery switch
- Extended swim platform - full beam wrap around w/handle & four step boarding ladder w/diamond non-skid & etched logo
- F.A.S.T. Tab®, vented hull chine w/reversed chines & delta performance pad
- Full instrumentation - deluxe reduced glare gauges w/S/Steel bezels & lifetime warranty
- Galvanic isolator
- High water alarm system - audio/visual
- Premium smooth-actuation throttle & shift cables
- Pressurized water system

CABIN

- Cabin lighting, S/Steel w/fingertip dimming
- Choice of designer fabrics
- Clothes locker
- Color coordinated throw pillows
- Premium vinyl
- Premium cabin carpet
- Sliding companionway lockable door
- Tinted deck hatch (20") w/screen
- V-Berth filler cushions convertible to dinette seating

- Vinyl headliner
- CO detector
- Trash receptacle
- V-Berth, upholstered, w/mirror
- Custom cabinets w/luxurious Cherry Wood Finish
- Custom counter top
- Storage areas
- 12 V/110 V receptacles
- Exhaust vent, electric (head)

- Shore power w/battery charger & 50' cord
- Shower - hand held freshwater, cold
- Snap-in cockpit carpet
- Stereo - premium Sony marine stereo w/single disc player & 4 speakers - 2 in cabin, 2 in cockpit, & remote at helm - w/auxiliary input jack for I-Pod/MP3 player
- S/Steel cupholders
- S/Steel 8" pull-up, oversized cleats (6)
- S/Steel rub rail insert w/white extrusion
- S/Steel welded bow rail-1" dia., 316L Stainless
- S/Steel ski tow rail w/eye
- S/Steel shocks for sundecks & lids
- S/Steel gate w/etched logo insert
- S/Steel windshield braces
- S/Steel windshield header

- Trim Tabs
- Water heater
- Woodgrain dash & full wood wheel
- CABIN
- Cabin lighting, S/Steel w/fingertip dimming
- Clothes locker
- Tinted deck hatch (20") w/screen
- GALLEY
- Microwave - S/Steel
- S/Steel sink
- 12 V / 110 V - S/Steel refrigerator
- HEAD
- Enclosed head compartment w/shower, sink, vanity & shower sump pump
- Vacu-flush w/waste tank level indicator
- Screened, opening portlight in head compartment

Five Year Powertrain & Engine Warranty

SPECIFICATIONS

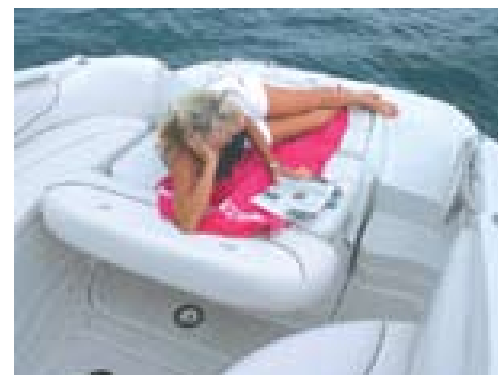
FUEL CAPACITY	MAXIMUM ENGINE	DRY WEIGHT	DRAFT	DEADRISE	ANGLE OF ENTRY AT BOW	BRIDGE CLEARANCE
75 gal /284L	425HP	6500-6700 Lbs 2948-3039Kg	24"/39" 61cm/99cm	20°	39°	66" /1.7M



The dinette area easily converts to a comfortable V-berth for sleeping.



Beautiful custom Cherry wood cabinets, S/Steel microwave, refrigerator and sink are just a few of the "value adding" standard features.



The aft bench seat offers three comfortable seating options - fully upright, reclined or flat.



The in-floor storage area has plenty of room for skis and wakeboards. Lid features stainless steel shocks.



CRUISERS

- 250 CR
- 270 CR
- 315 SCR
- 340 CR

Crownline cruisers are elegantly styled above and below deck.

The sumptuous cabins are beautifully styled and tastefully appointed.

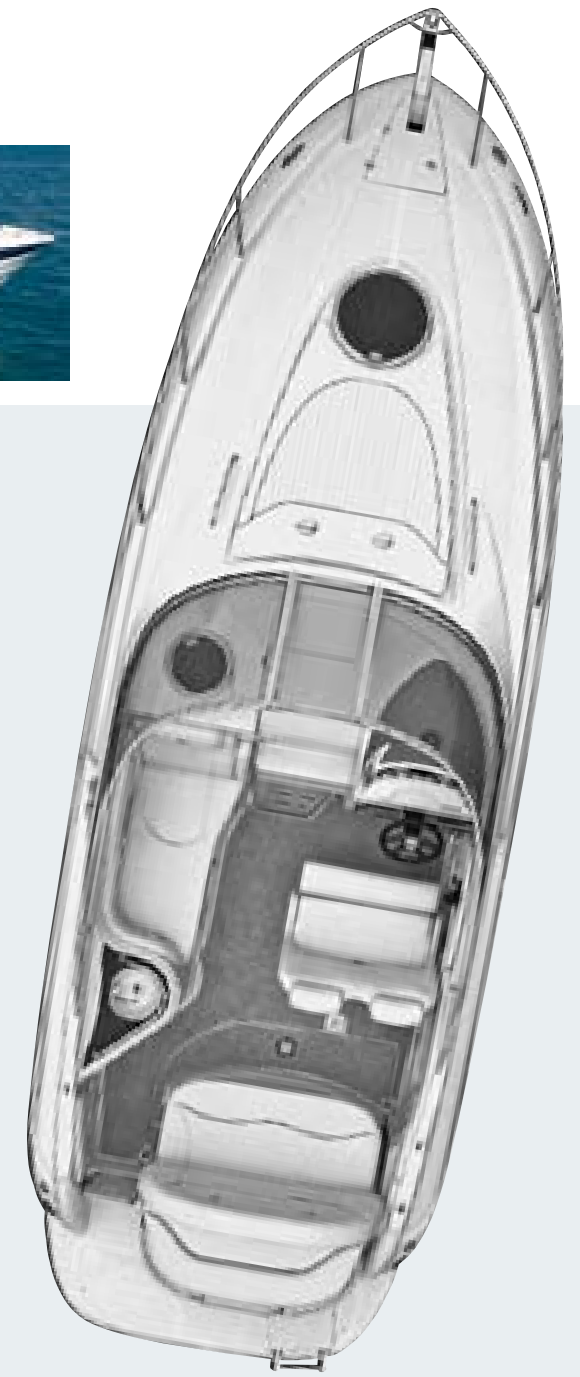
There are now four models to choose from.



250 CR



Shown in Moonstone/Amethyst with Mondial graphics and optional color-matched deck vents



Overall Length: 26'8" / 8.12M
Beam: 102" / 2.59M

STANDARD FEATURES

- Diamond, anti-skid surface
- Cockpit cooler - carry-on
- Curved tinted safety glass walk thru windshield
- Engine compartment lighting
- Engine hour meter
- Fire extinguisher
- Foredeck sunpad rails (2)
- Fully integrated cockpit fiberglass liner
- Low glare dash
- Molded deck access steps
- Navigation lights
- Opening cabin port lights w/screens (2)
- Portside lounge
- Pressure treated marine panels w/transferable lifetime warranty
- Rack-&-pinion steering
- S/Steel transom gate w/etched logo insert
- Tilt steering wheel
- Transhield shipping cover
- Two tone Armorcote gelcoat (narrow hull band) or solid Moonstone

VALUE ADDED STANDARD FEATURES

- 26 gallon fresh water tank
- Adjustable flip up double helm seat (w/storage) swivels to face port/portside lounge & swivels aft
- Aft bench seat - three position converts to sunbed
- Anchor pulpit roller - polished S/Steel
- Automatic bilge pumps (3) 2 w/manual override
- Automatic fire extinguisher system w/indicator
- Battery charger
- Canvas - color-keyed full camper canvas includes stand-up top w/quick disconnect hardware, clear front bimini connector, side & aft curtains, embroidered boot
- Cockpit "trunk" storage - oversized
- Cockpit table, portable, w/base & designated storage area
- Compass
- Crystal cap Crownline letters & logo
- Depth sounder w/outside air & water temp.
- Dockside power inlet
- Dockside water receptacle w/pressurized water system
- Dual battery switch
- Electric lift engine hatch w/secondary "Quick Charge" terminal
- Extended swim platform - extended beam wrap-around w/handle & four step boarding ladder w/diamond non-skid & etched logo
- Full instrumentation - deluxe fog resistant, reduced glare gauges w/S/Steel bezels & lifetime warranty
- Galvanic isolator
- Grab handles - S/Steel
- High water alarm system - audio/visual
- Premium smooth-actuation throttle & shift cables
- Shore power w/50' cord
- Shower - hand held freshwater (hot & cold)
- Snap-in cockpit carpet
- Stereo - premium Sony marine stereo w/single disc player & 4 speakers - 2 in cabin, 2 in cockpit, & remote at helm- w/auxiliary input jack for I-Pod/MP3 player
- S/Steel welded bow rail- 1" dia., 316L Stainless
- S/Steel 8" pull-up, oversized cleats (6)
- S/Steel cupholders
- S/Steel shocks for sundecks & lids
- S/Steel rub rail Insert w/black or white extrusion
- S/Steel ski tow eye
- S/Steel windshield braces
- S/Steel windshield header
- Trim tabs w/indicators
- Water heater
- Wetbar cooler storage w/doors
- Woodgrain dash & full wood wheel

Five Year Powertrain & Engine Warranty

SPECIFICATIONS

9 PERSON CAPACITY	FUEL CAPACITY	MAXIMUM ENGINE	DRY WEIGHT	DRAFT	DEADRISE	ANGLE OF ENTRY AT BOW	BRIDGE CLEARANCE
1344 lbs/610kg	75 gal /284L	425 HP	6400-6600 lbs 2906-2996kg	23"/38" 58cm/97cm	18°	39°	74.25" /1.9M (W/O ARCH)



The 250 helm is designed and built for optimum convenience and visibility.



The oversized trunk storage compartment has a designated area for storing the portable cockpit table.



The 3-position aft bench seat easily converts to a full sunbed without the use of filler cushions.



The convenient cockpit wetbar features cooler storage with doors.



The stylish cabin design and long list of standard features offer the maximum in comfort and convenience.

250 CR INTERIOR

STANDARD FEATURES

CABIN

- Aft cabin window w/screen
- Choice of designer fabrics
- Color coordinated throw pillows
- Premium vinyl
- Privacy curtains
- Sliding companionway lockable door
- Tinted deck hatch (20") w/screen

- V-berth filler cushions convertible to dinette seating
- Vinyl headliner
- CO detectors (2)
- Trash receptacle
- V-berth, upholstered, w/mirror

HEAD

- Enclosed head compartment w/shower, sink, vanity & shower sump pump
- Exhaust vent, electric

GALLEY

- Custom cabinets w/luxurious cherry wood finish
- Custom counter top
- Storage areas

VALUE ADDED STANDARD FEATURES

CABIN

- Premium cabin carpet
- Clothes locker (2) - his & hers
- Tinted deck hatch (12") w/screen for exclusive galley venting

GALLEY

- Ceramic top electric flat top stove
- Fiberglass galley floor
- Microwave - S/Steel
- 12V receptacle & two 110V receptacles
- 12V/110V S/Steel refrigerator

HEAD

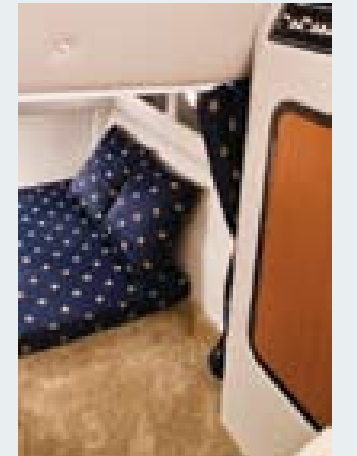
- Porcelain head, w/25 gallon waste water tank & level indicators
- Screened, opening portlight in head compartment



The enclosed head compartment is complete with shower, sink, vanity, porcelain toilet, electric vent fan and screened opening portlight.

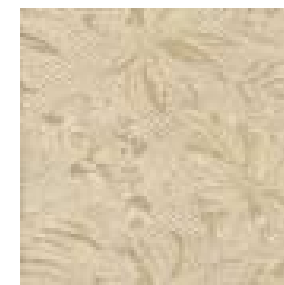


Dinette converts to a V-berth sleeping area.

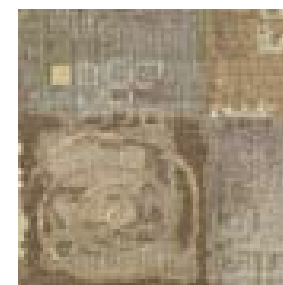


The mid-cabin berth provides additional sleeping accommodations for comfortable overnighting.

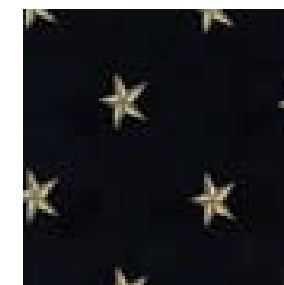
The custom counter top is an eye catching feature in the galley.



Conrad Dawn



Platinum Mist



Nautical Star

FABRIC SELECTIONS

270 CR



Shown in Moonstone/Onyx with color matched deck vents, crystal cap letters and Crowline logo. Radar arch is optional.



Overall Length: 28'8" / 8.7M
Beam: 102" / 2.59M

STANDARD FEATURES

- Cockpit cooler - carry-on
- Cockpit "trunk" storage - oversized
- Curved tinted safety glass walk-thru windshield
- Diamond, anti-skid surface
- Dockside power inlet
- Dockside water receptacle w/pressurized water system
- Engine compartment lighting
- Engine hour meter
- Fire extinguishers (2)
- Foredeck sunpad rails (2)
- Fully integrated cockpit fiberglass liner
- Grab Handles - S/Steel
- Low glare dash
- Molded deck access steps
- Navigation lights
- Opening cabin port lights w/screens (2)
- Portside lounge
- Pressure treated marine panels w/transferable lifetime warranty
- Rack-&-pinion steering
- S/Steel ski tow eye
- S/Steel transom gate w/etched logo insert
- S/Steel windshield braces
- Tilt steering wheel
- Transhield shipping cover
- Two tone Armorcote gelcoat (narrow hull band) or solid Moonstone

VALUE ADDED STANDARD FEATURES

- HULL & DECK
- 26 gallon fresh water tank
- Adjustable flip up double helm seat (w/storage)
- Aft bench seat - three position converts to sunbed
- Anchor pulpit roller - polished S/Steel
- Automatic bilge pumps (3) 2 w/manual override
- Automatic fire extinguisher system w/indicator
- Battery charger
- Canvas - color-keyed full camper canvas includes stand-up top w/quick disconnect hardware, clear front bimini connector, side & aft curtains, embroidered boot, S/Steel tubing & hardware, & retractable legs
- Cockpit wetbar w/sink, faucet, handrail & cooler storage w/doors
- Cockpit table, portable, w/base & designated storage area
- Compass
- Crystal cap Crowline letters & logo
- Depth sounder w/outside air & water temp.
- Dual battery switch
- Electric lift engine hatch w/secondary "Quick Charge" terminal
- Extended swim platform - full beam wrap- around w/handle & four step boarding ladder w/diamond non-skid & etched logo
- Full instrumentation - deluxe reduced glare gauges w/S/Steel bezels & lifetime warranty
- Galvanic isolator
- High water alarm system - audio/visual
- Premium smooth-actuation throttle & shift cables
- Shore power w/50' cord
- Shower - hand held fresh-water (hot & cold)
- Snap-in cockpit carpet
- Stereo - premium Sony marine stereo w/single disc player & 4 speakers - 2 in cabin, 2 in cockpit, & remote at helm - w/auxiliary input jack for I-Pod/MP3 player
- S/Steel welded bow rail- 1" dia., 316L Stainless
- S/Steel 8" pull-up, oversized cleats (6)
- S/Steel cupholders
- S/Steel shocks for sundecks & lids
- S/Steel rub rail Insert w/black or white extrusion
- S/Steel windshield header
- Trim tabs w/indicators
- Water heater
- Wetbar cooler storage w/doors
- Woodgrain dash & full wood wheel

Five Year Powertrain & Engine Warranty

SPECIFICATIONS

FUEL CAPACITY	MAXIMUM ENGINE	DRY WEIGHT	DRAFT	DEADRISE	ANGLE OF ENTRY AT BOW	BRIDGE CLEARANCE (W/O ARCH)
75 gal /284L	425 HP	7400-7600 Lbs 3357-3447kg	21"/36" 53cm/91cm	18°	39°	79.5" /2.0M



The lighted engine compartment features an electric lift hatch with a secondary "Quick Charge" terminal.



Oversize trunk storage with designated storage area for cockpit table.



Portside lounge with convenient S/Steel cupholder and handrail.



Cockpit wetbar with sink, faucet, S/Steel handrail and cooler storage with doors.



The well-appointed, stylish cabin offers comfort and convenience for magical nights on the water.

270 CR INTERIOR

STANDARD FEATURES

CABIN

- Aft cabin window w/screen
- Choice of designer fabrics
- Color coordinated throw pillows
- Premium vinyl
- Privacy curtains
- Sliding companionway lockable door
- Tinted deck hatch (20") w/screen
- V-berth filler cushions convertible to dinette seating

- Vinyl headliner
- CO detectors (2)
- Trash receptacle
- V-berth, upholstered, w/mirror

HEAD

- Enclosed head compartment w/shower, sink, vanity & shower sump pump
- Exhaust vent, electric

GALLEY

- Custom cabinets w/luxurious cherry wood finish
- Custom counter top
- Multiple storage areas
- 12V receptacle & two 110V receptacles

VALUE ADDED STANDARD FEATURES

CABIN

- Premium cabin carpet
- Clothes locker (2) - his & hers
- Tinted deck hatch (12") w/screen for exclusive galley venting

GALLEY

- Ceramic top electric flat top stove
- Fiberglass galley floor
- Microwave - S/Steel
- 12V/110V S/Steel refrigerator

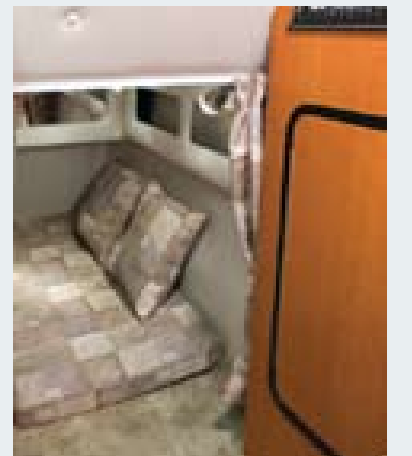
HEAD

- Porcelain head, w/25 gallon waste water tank & level indicators
- Screened, opening portlight in head compartment



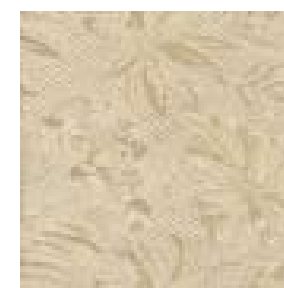
Spend your nights on the water with all the comforts and convenience of home!

The enclosed head compartment includes a shower, sink, vanity and porcelain head.

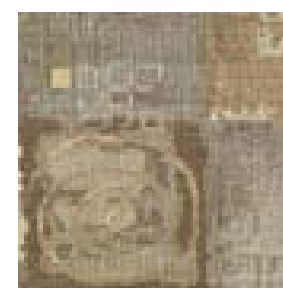


The mid-cabin berth provides an additional comfortable sleeping area.

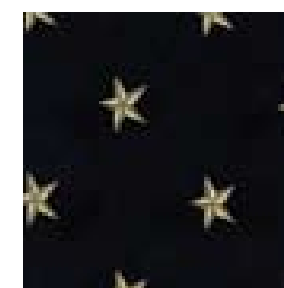
The galley comes equipped with customer counter top, S/Steel refrigerator and microwave, electric flat top stove - all enclosed in luxurious cherry wood cabinetry.



Conrad Dawn



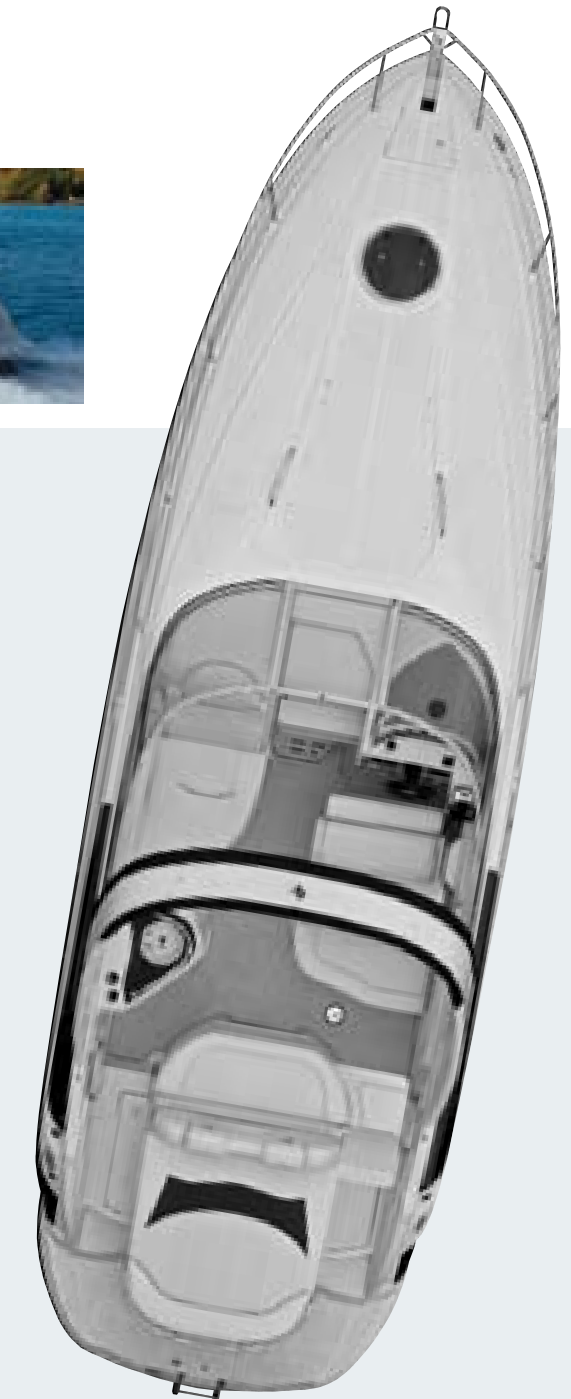
Navy Lights



Nautical Star

FABRIC SELECTIONS

315 SCR



Overall Length: 32'5" / 9.9M
Beam: 9'8" / 2.95M



Shown in Moonstone/Amethyst with Diamond graphics and optional color-matched deck vents .

STANDARD FEATURES

HULL & DECK

- 25 Gallon fresh water tank
- Automatic bilge pumps (3), 2 w/manual override
- Cockpit cooler - carry-on
- Curved tinted safety glass walk-thru windshield
- Diamond anti-skid surface

- Engine hour meter
- Fire Extinguishers (one in the cockpit, one in the cabin)
- Forward sunpad rails - S/Steel
- Fully integrated cockpit fiberglass liner

- Low glare dash
- Navigation lights
- Portable table
- Pressure treated marine panels w/transferable lifetime warranty

- Rack-&-pinion steering
- S/Steel ski tow eye
- Tilt steering wheel
- Transhield shipping cover

VALUE ADDED STANDARD FEATURES

HULL & DECK

- Adjustable flip-up double helm seat w/oversized finished fiberglass storage area under bench
- Aft bench seat converts to sunbed
- Anchor pulpit roller - polished S/Steel w/chain tensioner
- Automatic fire extinguishing system w/indicator
- Canvas - color-keyed full camper canvas includes stand-up top w/quick disconnect hardware, clear front bimini connector, side & aft curtains, embroidered boot, S/Steel tubing & hardware
- Cockpit trunk storage - oversized
- Cockpit wetbar w/sink, faucet, handrail, Karadon top, storage area & 12V outlet
- Karadon top w/storage & 12V outlet
- Compass

- Crystal cap Crownline letters & logo
- Depth sounder w/outside air & water temp.
- Docking lights - (chrome face)
- Dockside power inlet
- Dockside water receptacle w/pressurized water system
- Dual battery switch
- Easy dual transom cockpit entry
- Electric lift engine hatch w/secondary "Quick Charge" terminal
- Extended swim platform - extended beam wrap-around w/handle & four step boarding ladder w/diamond non-skid & etched logo
- F.A.S.T. Tab™, vented hull chine w/reversed chines & delta performance pad

- Fiberglass radar arch w/canvas tracking (camper canvas std.)
- Full instrumentation - deluxe reduced glare gauges w/S/Steel bezels & lifetime warranty
- Galvanic isolator
- Gelcoat - premium two-tone Armorcote gelcoat (narrow hull band) or solid Moonstone
- High water alarm system - audio/visual
- Premium smooth-actuation throttle & shift cables
- Shore power w/battery charger & 50' cord
- Shower - hand held fresh-water (hot & cold)
- Snap-in cockpit carpet
- Stereo - premium Sony marine stereo w/removable face plate, remote at helm & transom w/changer capability, 52 watts

- per channel, MP3 & Atrac3 playback, XM & Sirius Satellite ready & auxiliary input for I-Pod & MP3
- S/Steel 8" pull-up, oversized cleats (6)
- S/Steel bow rail - 1" dia., 316L Stainless
- S/Steel cupholders
- S/Steel grab handles throughout
- S/Steel gates w/etched logo inset
- S/Steel shocks for sundecks & lids
- S/Steel windshield braces
- S/Steel windshield header
- S/Steel rub rail insert w/black or white extrusion
- Trim tabs w/indicators
- Water heater
- Woodgrain dash & full wood wheel

Five Year Powertrain & Engine Warranty

SPECIFICATIONS

FUEL CAPACITY	MAXIMUM ENGINE	DRY WEIGHT	DRAFT	DEADRISE	ANGLE OF ENTRY AT BOW	BRIDGE CLEARANCE
139 Gal /526L	750 HP (TWIN)	10,000-10,300 Lbs <small>(TWIN GAS ENGINES)</small>	28"/40"	23°	39°	104"/2.6M <small>(W/ARCH)</small>
		11,000 Lbs <small>(TWIN DIESEL ENGINES)</small>	71cm/102cm			75" / 1.9M <small>(W/O ARCH)</small>



The impressive helm features full instrumentation with lifetime warranty. Shown with optional color matched dash & wheel insert.



Oversized finished storage area under bench seat.



Entertainment friendly cockpit seating. The portable table conveniently stows away under the sundeck.



The cockpit wetbar has pressurized water, conveniently located 12V outlet and storage area.



315 SCR INTERIOR

STANDARD FEATURES

CABIN

- Choice of designer fabrics
- Color coordinated throw pillows
- Sliding companionway lockable door
- Premium vinyl
- Tinted deck hatch (20") w/screen & shade
- Vinyl headliner
- CO detector

GALLEY

- Custom cabinets w/luxurious cherry wood finish
- Custom counter top
- Storage areas
- 12V receptacle & two 110V receptacles
- Trash receptacle

HEAD

- CO1 detector
- Enclosed head compartment w/shower, sink, vanity & shower sump pump
- Exhaust vent, electric



Dinette easily converts to a comfortable V-berth sleeping area.

VALUE ADDED STANDARD FEATURES

CABIN

- Oversized hanging locker
- Opening cabin portlight w/screen

GALLEY

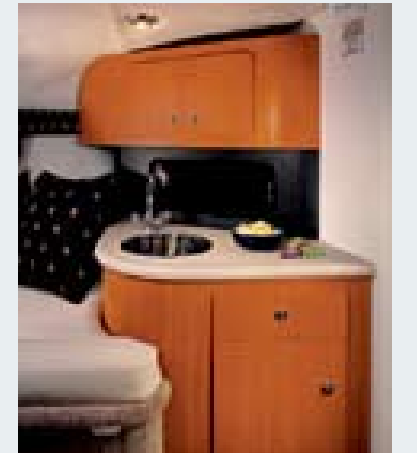
- Ceramic top electric flat top stove
- Corian™ counter tops
- Microwave - S/Steel
- S/Steel refrigerator
- 12V/110V receptacles

HEAD

- Screened, opening portlight in head compartment
- Vacu-flush w/waste tank level indicator



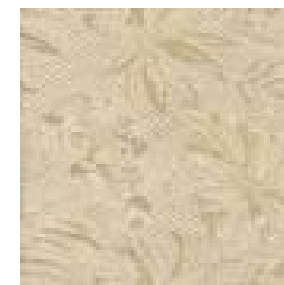
Convenient, fully furnished head compartment with shower, sink, vanity and sump pump. Vacu-flush and screened opening portlight are also standard.



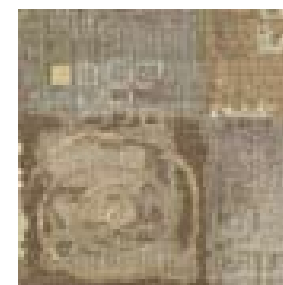
Just across from the portside galley you will find additional custom cabinetry with even more storage areas and a sink with pressurized water.

Portside galley is well appointed with custom cabinets with storage areas, a ceramic top electric flat top stove, custom counter top, S/Steel microwave and refrigerator.

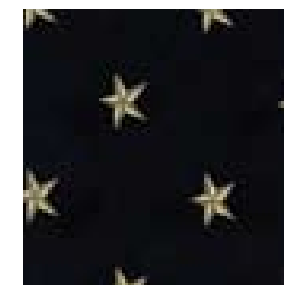
Designed for comfort and convenience with more than six feet of headroom and all the amenities of home.



Conrad Dawn



Navy Lights



Nautical Star

FABRIC SELECTIONS



Shown in Moonstone/Amethyst with Executive gelcoat and crystal cap Crownline letters and logo

340 CR



1. Anchore locker
2. Teak swim platform with twin integrated storage tubs
3. Engine hatch
4. Passenger lounge

STANDARD FEATURES

HULL & DECK

- Abundant storage w/gelcoat finish
- Aft fender, rope & accessories storage area
- Anti-skid surface
- Automatic bilge pumps
- Cooler - 48 quart, carry-on
- Courtesy lights

- Deck hatches (3) - tinted, w/screens
- Dual electric horns (concealed)
- Engine hour meter
- Fire extinguishers - 2 (hand held)
- Foredeck drink holders & grab handles
- Full instrumentation - deluxe reduced glare gauges w/S/Steel bezels & lifetime warranty

- Fully integrated cockpit fiberglass liner, self draining
- Gelcoat - premium two-tone Armorcote gelcoat (narrow hull band) or solid Moonstone
- High water alarm system - audio/visual
- Interior - aft U-wrap cockpit seating, port lounge
- Low glare dash

- Molded steps to foredeck for easy access
- Mounting area for navigation electronics at helm
- Navigation lights
- Rack-&-pinion steering
- S/Steel hardware, fittings & deck plates
- Tilt steering wheel

VALUE ADDED STANDARD FEATURES

HULL & DECK

- Adjustable double helm seat w/flip-up bolster & color-matched headrest
- Air conditioner/heater w/digital control pad
- Anchor pulpit roller - polished S/Steel
- Automatic fire extinguishing system w/indicator
- Battery parallel switch at helm
- Bow scuff plate
- Cabin entry door - lockable, w/screen
- Cable TV/Phone jack - wired
- Canvas - color-keyed full camper canvas (color choices onyx, amethyst or moonrock) incl. stand-up top w/quick disconnect hardware, clear front bimini connector, side & aft curtains, embroidered boot, S/Steel tubing & hardware
- Cockpit wetbar w/S/Steel sink & refrigerator, aerator, trash receptacle & AC/DC outlets

- Compass
- Crystal cap Crownline letters & logo
- Curved, tinted safety glass walk-thru windshield w/S/Steel header & pass-thru vented door
- Depth sounder w/outside air & water temp.
- Dockside water receptacle w/pressurized water system
- D.T.S. - Digital Throttle & Shift control (gas Mercruiser engines only)
- Dual battery switch
- Electric lift engine hatch w/secondary "Quick Charge" terminal
- Swim platform - teak surface w/integrated storage tubs
- Fiberglass hard top w/ventilation hatch, lights, speakers & S/Steel grab handles
- Galvanic isolator
- Generator (gas 7.3KW) w/remote starter

- Karadon accents - cockpit
- "No hassle" battery charging system
- Portable table w/designated storage
- Premium smooth-actuation throttle & shift cables
- Remote spotlight
- Remote for stereo at transom & helm
- Resettable breakers at helm
- Shore power inlets & 50' cords (2) w/battery charger
- Shower - hand held freshwater transom shower (hot & cold)
- Smartercraft System View LCD
- Snap-in cockpit carpet
- S/Steel 10" pull-up, oversized cleats (6)
- S/Steel bow rail - 1.25" dia., w/lifeline, (316L)
- S/Steel cupholders
- S/Steel four step boarding ladder & grab handle
- S/Steel grab handles throughout

- S/Steel shocks for sundecks & lids
- S/Steel rub rail insert w/white extrusion
- S/Steel transom entry gate w/acrylic door
- Stereo - Sony premium CD/ DVD combo, removable face plate, remote, 52 watts per channel (4), 6 disc cd changer, amplifier & 8 speakers, MP3 & Attrac3 Playback, XM & Sirius satellite ready & auxiliary input for I-Pod & MP3 player
- Trim tabs w/indicators
- Windlass w/rope & chain
- Windlass control at helm & foredeck
- Windshield wiper
- Woodgrain dash accents & full wood wheel



Overall Length: 36'11M Beam: 11'11"/ 3.4M

Five Year Powertrain & Engine Warranty



The stylish helm is accented with a woodgrain dash and wheel. Full instrumentation, battery parallel switch, D.T.S. control and compass are a few of the 340's many standard features.



Large storage at aft handily stows away fenders, ropes and accessories.



The entertainment console is equipped with S/Steel refrigerator and sink, AC/DC outlets and a trash receptacle.



Removable aft bench seat and teak swim platform with twin integrated storage tubs.

SPECIFICATIONS

FUEL CAPACITY	MAXIMUM ENGINE	DRY WEIGHT		DRAFT	DEADRISE	ANGLE OF ENTRY AT BOW	BRIDGE CLEARANCE
193 Gal /730L	850 HP (TWIN)	16,000-16,300 Lbs <small>(TWIN GAS ENGINES)</small>	7257-7394kg	17"/35"	18°	37°	10'6"/3.2M <small>(W/HARDTOP)</small>
		16,300-16,500Lbs <small>(TWIN DIESEL ENGINES)</small>	7394-7484kg	43cm/88cm			



340 CR INTERIOR

STANDARD FEATURES

CABIN

- Choice of designer fabrics
- CO detectors - 2
- Color coordinated throw pillows
- Oversized hanging locker
- Privacy curtains
- Table - solid wood

GALLEY

- AC stove w/two burners
- Custom counter tops w/back splash
- Custom cabinets w/luxurious cherry wood finish

HEAD

- Air Conditioner duct
- Exhaust vent, electric
- Overhead storage

VALUE ADDED STANDARD FEATURES

CABIN

- Hardwood floors throughout
- Oversized hanging locker
- Opening cabin portlights (4) w/screens
- TV - Flat screen
- Water heater

GALLEY

- Ceramic top electric flat top stove
- Corian™ counter tops
- Microwave - S/Steel
- S/Steel refrigerator
- 12V/110V receptacles

HEAD

- Enclosed head compartment - shower w/adjustable head, teak wood shower seat, vanity w/mirror, Karadon counter top & shower sump pump
- Screened, opening portlight in head compartment
- Vacu-flush w/waste tank level indicator



Beautiful and functional, the head comes standard with a screened opening portlight, shower with teak wood seat, vacu-flush head and much more!



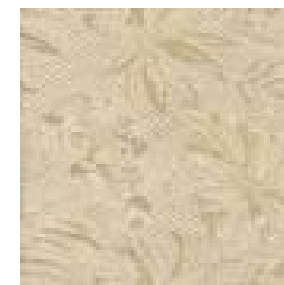
Portside galley features include custom cabinets with storage areas, a ceramic top electric flat top stove, microwave and refrigerator.



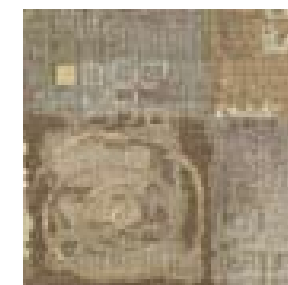
The spacious aft cabin becomes a private extra sleeping area.

The fully equipped galley has everything you need to prepare a snack or an elaborate dinner.

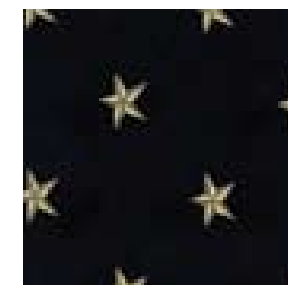
The plush and well appointed cabin area features beautiful hardwood floors.



Conrad Dawn



Platinum Mist



Nautical Star

FABRIC SELECTIONS



PreFixx

attwood



3M



Every Crownline boat is built to last and every piece of equipment we install is selected for its quality and marine durability.

We operate based on an established professional code of conduct committed to total customer satisfaction. We build our boats for our customers—for long-lasting, trouble-free enjoyment. That's why we are one of the top stern drive sport boat manufacturers in the world.



That's also why we have received MerCruiser's Installation Quality Certified Manufacturer's status.



As a result of this certification, all Crownline boats come standard with a five year limited powertrain warranty.

