

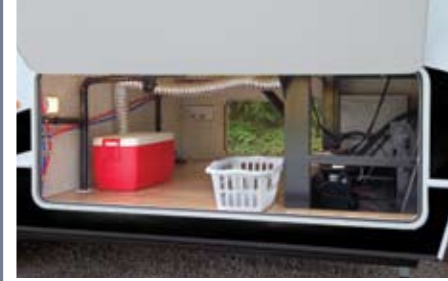
BY FOREST RIVER  
**WOLF PACK** LEAD THE PACK.



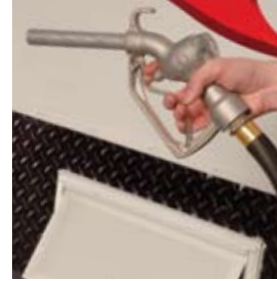
# WOLF PACK



The attention to detail is seen throughout the coach. From the drop down skirt around the fold up sofa that stores your extra gear, all the way to these upgraded cabinets, that feature a cargo net to safely store your helmets, or anything else you might imagine for your trip.



Wolf Pack has the most exterior storage of any toy hauler in the industry! This fifth wheel drop z-frame storage provides more than enough room for extra storage and includes a convenient laundry chute.



The 32 gallon fuel station makes it easy and convenient to fill up all your toys.



Kitchen workspace is also maximized in your Wolf Pack. The standard bar stools at the breakfast bar give you the ability to catch a quick snack, or chart out the day's journey.



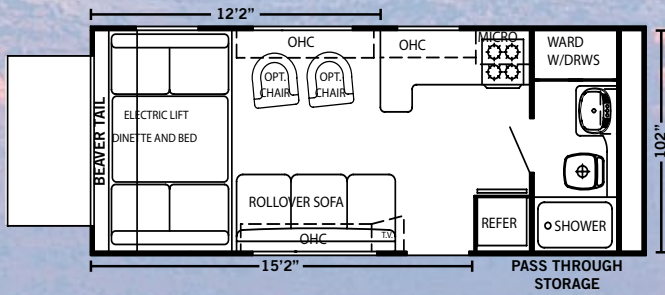
Wolf Pack is known throughout the industry as "Bigger and Better", this is clearly shown in the industries largest picture window. Enjoy where your at, with Wolf Pack you easily see all your surroundings. Sit back and enjoy the sites in these optional and plush moveable chairs.



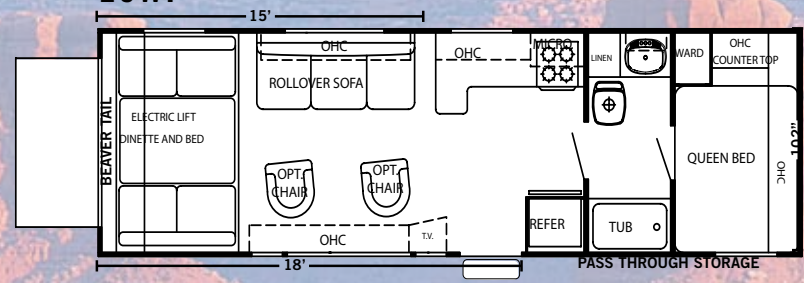
Wolf Pack features the Industries First Electric Dinette, with enough clearance to get in even the biggest of toys. You can comfortably sit 6 adults at this HUGE table. When your done eating and playing this dinette then breaks down into a California Queen Bed. You can also option in a second queen bed above the dinette if you wish.

# TRAVEL TRAILERS

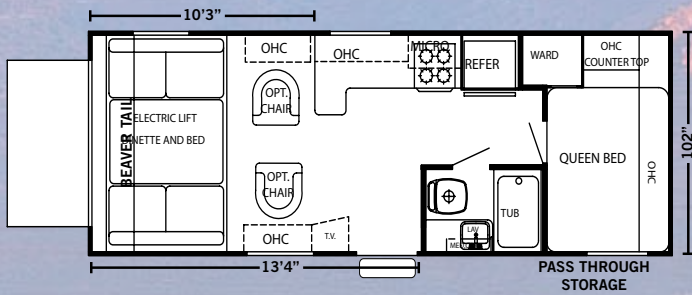
### 22WP



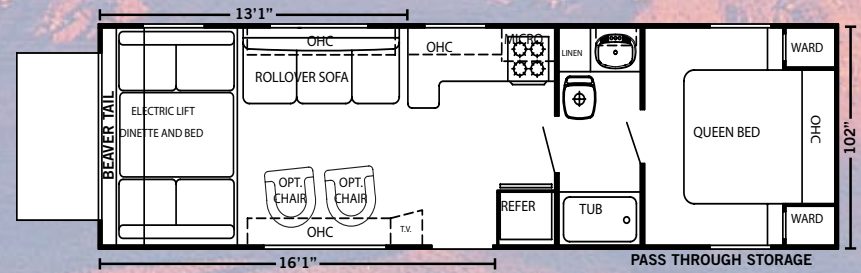
### 26WP



### 23WP



### 30WP



# SPECIFICATIONS

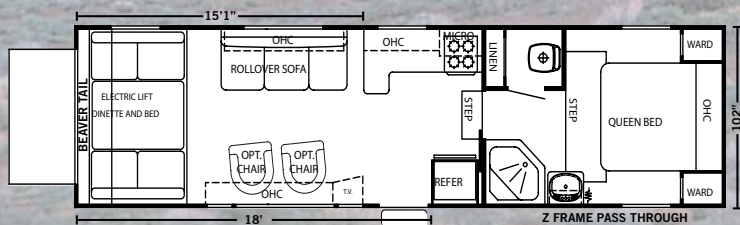
## TRAVEL TRAILERS

## FIFTH WHEELS

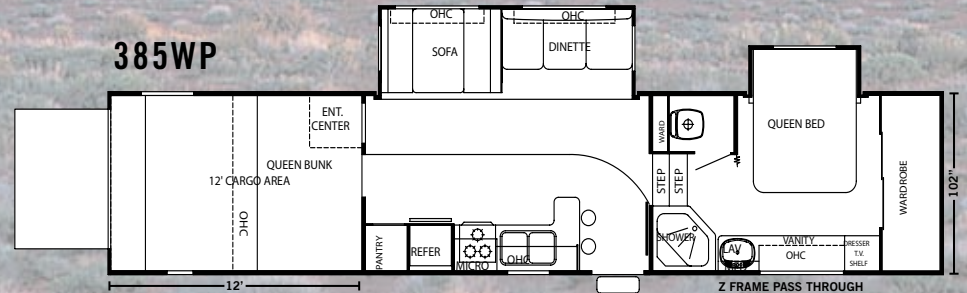
	22WP	23WP	26WP	30WP	295WP	385WP
Hitch Weight	1140 lbs	TBA	1177 lbs	1340 lbs	1830 lbs	2605 lbs
Axle Weight	5120 lbs	TBA	5969 lbs	6420 lbs	6300 lbs	9075 lbs
UVW	6260 lbs	TBA	7146 lbs	7760 lbs	8130 lbs	11680 lbs
Payload	5040 lbs	TBA	4191 lbs	3740 lbs	4100 lbs	4925 lbs
Unit Height w/ AC	11' 11"	11' 11"	12' 2"	11' 11"	12' 2"	12' 11"
Fresh Capacity	110 gal	110 gal	110 gal	110 gal	110 gal	110 gal
Fuel Capacity	32 gal	32 gal	32 gal	32 gal	32 gal	32 gal

# FIFTH WHEELS

### 295WP



### 385WP

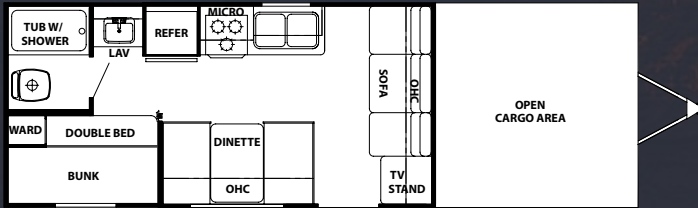




# WOLF PACK

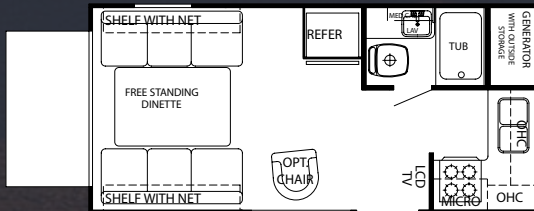
## 1/2 TON SERIES

### 18 DFWP



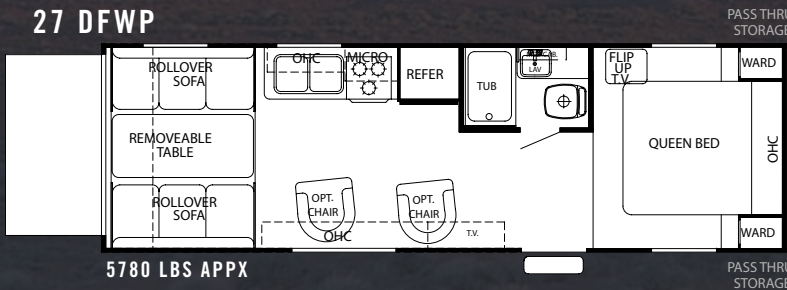
5051 LBS. APPX.

### 17 DFWP



4360 LBS. APPX

### 27 DFWP



5780 LBS APPX

### STANDARDS

- WIDEBODY
- NO WHEEL WELLS
- SOLAR PANEL
- TINTED SAFETY GLASS
- FANTASTIC FAN
- EXTERIOR SPEAKERS
- 30" WIDE RADIUS DOOR
- 10,000 GALLON WATER FILTER
- CD RADIO W/ FM/AM
- SATELLITE PREP
- ALUMINUM RIMS
- BLACK TANK FLUSH
- 50 GALLONS FRESHWATER
- HURRICANE SIDEWALL STRAP
- COACHNET
- MICROWAVE
- FINISH LINE A&E AWNING
- ARMSTRONG FLOOR COVERINGS
- EXTERIOR LOCK STATION
- QUICK COOL DOMETIC AC
- WALK ON ROOF
- LARGE BATH SINK
- KNIFE RACK
- DIAMOND PLATE ROCK GUARD
- DUAL LP TANKS
- AMPLE STORAGE
- RAM AIR VENTS
- HIGH RISE FAUCET
- ALUMINIUM RAMP DOOR/RAILS
- OFF ROAD EXTREME TIRES
- BEAVER TAIL

### INTERIOR COLORS

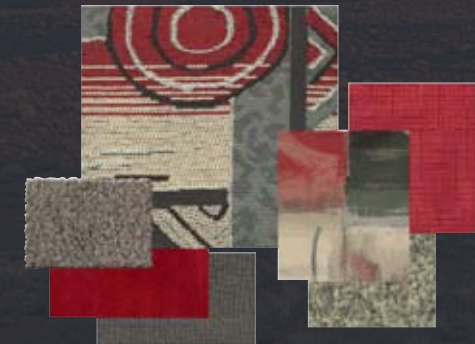
#### DELTA



#### FOXTROT



#### TANGO



## STANDARD FEATURES

- Industry Exclusive Electric Dinette with Optional Second Queen Power Bed
- 102" Widebody
- No Wheel Wells
- Steel-Caged Ramp Door
- Battery Recharging Solar Panel
- 4 X 4 Wolf Pack Beaver Tail
- 2,500 Lbs Flush Floor Mounts
- Exterior Speakers
- Battery Disconnect
- Fuel Timer with Emergency Cut-off
- Breakfast Bar
- Exterior TV Cabinet
- 12 volt Utility Plug
- Bunk Window Cargo Net
- Diamond Plate Back Splash
- 13.5 Btu High Eff. Ducted A/C
- Racing Checkered Awning
- Cable And Satellite Ready
- Onan Generator Prep
- Over 110 Gallon Fresh Water
- 3 Burner Range
- 7' Extra Large Ramp Door
- High Rise Kitchen Faucet
- Raised Panel Cathedral Doors
- Double Shelved Cabinets
- Exterior Ladder To Roof
- Diamond Plate
- Extra Large Dual Axles

## AVAILABLE OPTIONS

- Front Cap Gel Coat With Aluminum Exterior
- Gel Coat Cap And Side Walls
- Large Exterior Folding Assist Grab Handle
- Safety Glass
- Ramp Patio Room
- Ceiling Fan 12 Volt
- Swivel Rocker
- Plank Wood Linoleum
- Telephone Jack Location: Kitchen
- Raised 6 Panel Refer Insert
- Oak-edged Countertops
- Day/Night Shades
- Black Tank Flush
- Stabilizer Jacks Travel Trailers
- Turbo 6 Gallon Gas/Electric DSI Water Heater
- Powder Coated Frame
- 3/8" Walkable Roof Decking
- Radius Truss Roof Rafters
- 5/8" Tongue and Groove Plywood Floor
- Powder Coated Frame
- Granite Look Laminated Countertops
- Bar Stools
- Extra Large Tinted Windows
- Exterior Sewer Holder
- TV Antenna & Booster
- 30" Radius Entry Door
- Sealed Floor
- Water Heater Bypass
- Triple Step
- Bathroom Skylight
- Flex Blinds
- Rain Gutters & Down Spouts
- Heated Mattress (in select floorplans)
- LP Leak Detector
- Tub Surround
- Upgraded Cabinet Handles
- Clear Fantastic Fan Dome
- Two Coat Hooks
- Decorative Clock
- Dual 30# LP Bottles
- Residential Grade Cabinets
- 12 volt LCD Flatscreen TV with DVD
- Rear Garage Storage Door
- Sink Cover
- Range Cover
- Oven
- 10 Gallon Gas/Electric DSI Water Heater
- Heated Holding Tanks
- Chrome Wheel Covers
- Black Flush Tank
- Power Awning
- 15k Air Conditioner
- Screen Wall
- 2nd Queen Power Bed



## DUAL AXLE vs. TRIPLE AXLE

Wolf Pack features larger dual axles versus the competitions cheaper smaller capacity triple axles. Dual axles turn much sharper, thus making it much easier to get into those tough spots, than sluggish three axle units. You also encounter less wear and tear on your tires, because of you don't have one set of tires dragging through turns like three axle units.

## SOUTHWEST PACKAGE

- Spare Tire, Carrier and Cover with Logo
- Scare Light (Rear)
- Gas Pump Fuel Station w/ Generator Direct
- Sky Light Over Tub
- Removable Rear Room Edged Carpet
- Sprayer Hose

## ALPHA PACKAGE

- Upgraded Exterior graphics
- Four 50amp Exterior Recessed Lights
- TruGrip Diamond Plate Floor Covering

## CONVENIENCE PACKAGE

- 10,000 Gallon Water Filter System
- Bathroom Fantastic Vent Fan w/ Clear Dome
- Remote Control Cd/Cassette Stereo System
- 6 + 2 Surround Sound Stereo Speaker System
- Carbon Monoxide Detector

YOUR **WOLF PACK** DEALER

402 LEHMAN AVE., TOPEKA, IN 46571, PHONE: 260.593.2539, FAX: 260.593.2966 WWW.FORESTRIVERINC.COM, WWW.FORESTRIVERACCESSORIES.COM

All illustrations and specifications contained in this literature are based on the latest product information at time of publication. Forest River reserves the right to make changes in prices, colors, materials, equipment and specifications at anytime without notice and assumes no responsibility for any error in this literature. All units are shipped F.O.B. Goshen, Indiana. **CONSULT YOUR LOCAL DEALER FOR WARRANTY INFORMATION.**