

2007

OUTLAW

by DAMON MOTORCOACH

Outlaw n. 1 One who refuses to be bound by accepted beliefs or practices. A rebel.

Finally, a Class A Toyhauler for your inner outlaw.



Take a stand. Tell this "one size fits all" world you're not going to put up with it any more. It's time to go your own way – and take your toys with you.

It's time to escape in a motorhome like no other. Introducing Outlaw. The rebel of the Damon family.

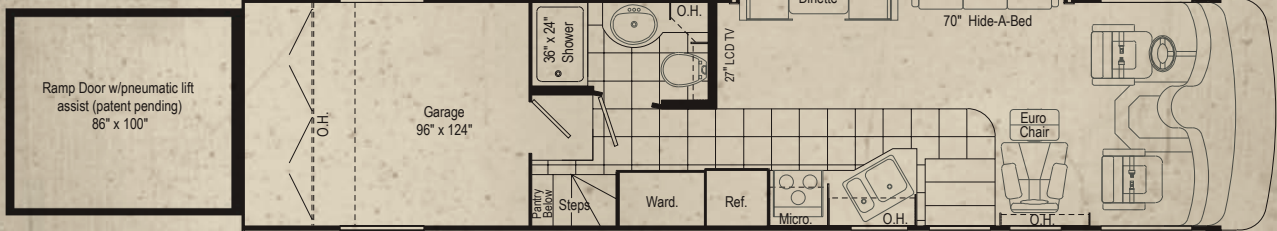
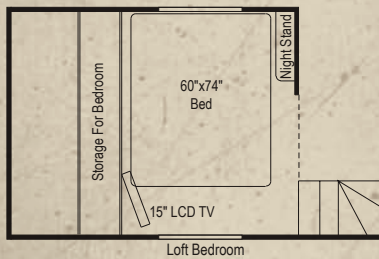
The sloped roof is not only stylish and aerodynamic, it provides sleeping quarters for two in a loft above the garage. The wide body holds more toys in the garage and more creature comforts in the living area

– including a large bath with shower and a fully-equipped galley. The large slide-out features an incredibly comfortable air mattress hide-a-bed.



Outlaw is the latest innovation from Damon. See it now.

Order it now.



▲ Pass through Storage ▲

Model 3611

Outlaw standard specifications and features

Bathroom

Vinyl tile flooring
Shower with surround
Fantastic® power vent
Foot-flush toilet

Bedroom

Memory foam mattress with pillow shams and pillows
15" LCD TV (moveable)
Ceiling lights w/switch

Chassis

Automatic leveling jacks with touchpad controls
Front and rear mud flaps
22.5" tires and aluminum wheels
Trailer hitch (5,000 tow lbs. / 500 tongue lbs.)
Emergency start circuit
Layer of neoprene vibration dampener

Cockpit

AM/FM/CD player (single-disk, in-dash)
Map lights
Dash fans
Tinted wraparound windshield
Windshield privacy shade
Side-mounted heated remote mirrors
Reclining swivel captain's chairs
3-point, wall-mounted seatbelts
Sun visors
7" Back-up monitor system with audio
Drink holders

Entry

Double electric entrance step
New deeper stairwell
Battery disconnect
Interior assist grab handle

Exterior

Wide-body design
Exterior assist handle
Radius-cornered domed TPO roof
Side-mounted patio awning
Slideout awning
Upgraded, smooth high-gloss fiberglass wall
Locking exterior storage doors
Patio lights (one driver/two passenger)
Full basement lighted pass-through storage
Primary exterior storage doors gas-spring or prop-rod
Exterior entertainment center
Rear spotlights/dual halogens

Kitchen

Refrigerator: large flush-mounted, double-door
Refrigerator: raised-panel, hardwood front
3-burner range and oven
Folding range cover
Microwave oven
Lighted power range hood
Monitor panel with LPG readout
Sink cover
Pantry
Solid-wood, raised-panel cabinet doors (upper and lower)
Vinyl flooring
Dream dinette
Mini blinds
Ball-bearing drawer guides

Living Area

Euro recliner
Hide-a-bed (air mattress)
Day/night shades
27" LCD TV in entertainment center with full-function remote, antenna booster and jack
Video package (VCR/DVD player and control center)

Garage

Tread plate non-slip flooring
Air ventilation sidewall vents
A/C and heat vents
Stainless storage cabinet
TV hook-up / receptacles
Fantastic® power vent
Tie-down tracks
Miniblinds
Carbon monoxide, LP gas and smoke detectors
Rear drop-down ramp door w/pneumatic lift assist (patent pending)
Remote fuel filling station with pump and nozzle
Built in battery charger

Utilities

Air conditioner: dual 13,500-BTU ducted central (low profile)
Remote thermostatically controlled air conditioning
Furnace: 35,000-BTU electronic ignition, floor-ducted
Water heater: 6-gallon gas/electric with electronic ignition
Water heater bypass kit
Pre-wired for generator with auto changeover
Generator: 5.5 kW Onan® Marquis Gold®
Converter: 60-amp
Dual 6-volt auxiliary batteries
Battery disconnect
50-amp, 120-volt service
Exterior shower
Enclosed heated potable and holding tanks
Black-water tank flush
Telephone hookup
Cable TV/satellite hookup
Pre-wired for roof-mounted satellite dish
Exterior GFCI receptacle
Exterior TV prep

Options

24,000 lb Workhorse chassis
Black-framed dual-pane windows

Weights and Measures

Chassis	Workhorse / Ford
Wheelbase	242
Overall length	36' 11"
Overall width (w/o awnings)	101
Overall height with AC	12'11"
Std. weight (appx. lbs.)	19,535/19,010
GVWR (appx. lbs.)	24,000/22,000
GCWR (appx. lbs.)	30,000/26,000
Garage CCC (appx. lbs.)	2,000/1,500
Living area CCC (appx. lbs.)	2,465/1,490
Fresh water (appx. gal.)	75
Grey / black water (appx. gal.)	50/50
LP (lbs.)	103.5
Exterior storage capacity (cu. ft.)	131
Interior drawers	11
Fuel capacity (appx. gal.)	75



P.O. Box 2888 • Elkhart, IN 46515

Customer Service: 800-860-3812 • Sales: 800-860-5658

www.outlawrv.com



Due to constant product improvements, the specifications, component parts and standard/optional equipment are subject to change without notice or obligation. Product photography or diagrams may show equipment that is optional. Damon Motor Coach reserves the right to make changes in prices and models and to discontinue models without notice or obligation. Components, parts or chassis may have been manufactured at times other than the model year indicated. All capacities are approximate and dimensions are nominal. All dry weights are based on standard model features and do not include optional features or equipment. Various RV components and features may differ to conform to local codes. Due to EPA environmental restrictions, engine power and torque ratings may change mid-year. Some weights have been estimated and could vary.

DC 6/06 © 2006 Damon Motor Coach Printed in U.S.A.