

ESCAPER 2003



DAMON DARES YOU.



If you can find another



Go ahead. Check out our competitors. Escaper™ is the better value. We're sure of it. Other diesel motorhomes in its class cost \$60,000 to \$100,000 more. But Escaper matches, in some cases surpasses, their luxury. And beauty. We dare you to find a single one of them with all these extraordinary Escaper features:

## motorhome with features like this at Escaper's price ...

**Sculpted living room carpet** not only enhances the overall beauty of the interior, but also is remarkably easy to keep clean.

Our **cabinet door construction** is second to none. Mortise and tenon joints, an oven-baked performance catalyst finish and solid wood are just some of the features that make our cabinets the most reliable in the industry.

**Hidden hinges** eliminate visible holes in the wood and increase the overall beauty of the interior. Even if you need to adjust the doors after many years of use, the doors will still look as good as new.

Escaper's interior is decorated with elegant **Flexsteel® furniture and Corian® countertops**. Scratches can be buffed right out of the countertops, allowing the surface to retain its beauty year after year.

**Standard ceramic tile** in the kitchen and bath adds an elegant appeal. And unlike the competition, Escaper's tile resists cracking because it is adhered to cement board, not the plywood subfloor.

Pullout pantry drawers



Ultra-leather buddy seat w/integrated 3-point seat belt



Electric entry step cover



Organizer rack





Compare the features, th



You also have the option of a Surroundsound® **home theater system**, complete with a DVD/CD player, five full-range satellite speakers, an amplified subwoofer and a Pioneer® receiver.

**Keyless entry** lets you lock and unlock Escaper's cab doors just as you do your car doors. A "panic" button sets off the motorhome's exterior lights and air horns.

Our **electric entry step cover** is much better than an air step. It extends, then adjusts flush with the living room floor. Plus, it has a safety switch.

Stretch out in Escaper's **passenger buddy seat**. It's one and a half times a normal-sized seat, so there's plenty of room to get comfortable. The 6-way power adjustment lets you fine-tune the seat for even greater comfort.

Available with a **2500-watt inverter**, rather than the typical 1500-watt inverter, Escaper lets you run more appliances while camping, without having to run the generator.



en compare

the price. Damon wins every time. Period.

Solid-wood cabinet doors



Interior storage space



Pass-through basement storage



The image shows the interior of a motorhome bedroom. A bed with a white and grey floral patterned quilt and a black coverlet is the central focus. The bed is flanked by wooden bedside tables. On the left, a small potted plant sits on the table. On the right, a vase of colorful flowers is on the table. Above the bed, a window with white blinds is visible, flanked by wooden cabinets. The room features light-colored wood paneling and a large mirror on the right wall. The overall atmosphere is cozy and well-furnished.

Want a motorhome that is both be



If you're one of the 75% of motorhomers who tow a vehicle, you'll be happy to know that Escaper comes standard with a **10,000-lb. hitch**. Use it to tow a car, a pickup, even an SUV — Escaper is built to handle it.

Option the **Pioneer® XM-satellite radio tuner**, and you not only expand your choice of stations, but you also get coast-to-coast programming — with no need to switch stations as you travel.

Every 2003 Escaper is built with a **full fiberglass shell**. All sidewalls and roofs are made of seamless fiberglass, making them easy to clean and virtually maintenance-free.

When ordered with the optional **Sherwin Williams® full-body paint package**, your Escaper will definitely turn heads. Matching awnings accent the high-end design to create a truly beautiful motorhome.



## Beautiful AND affordable? Look no further than Escaper.

For a Damon Dare checklist for easy comparison shopping, visit our web site at [www.DamonRV.com](http://www.DamonRV.com). We're confident that these features put Escaper in a class of its own. So go ahead, shop around. Once you see everything that goes into an Escaper, we're confident you wouldn't dare settle for anything less.

Pioneer® XM-satellite radio tuner

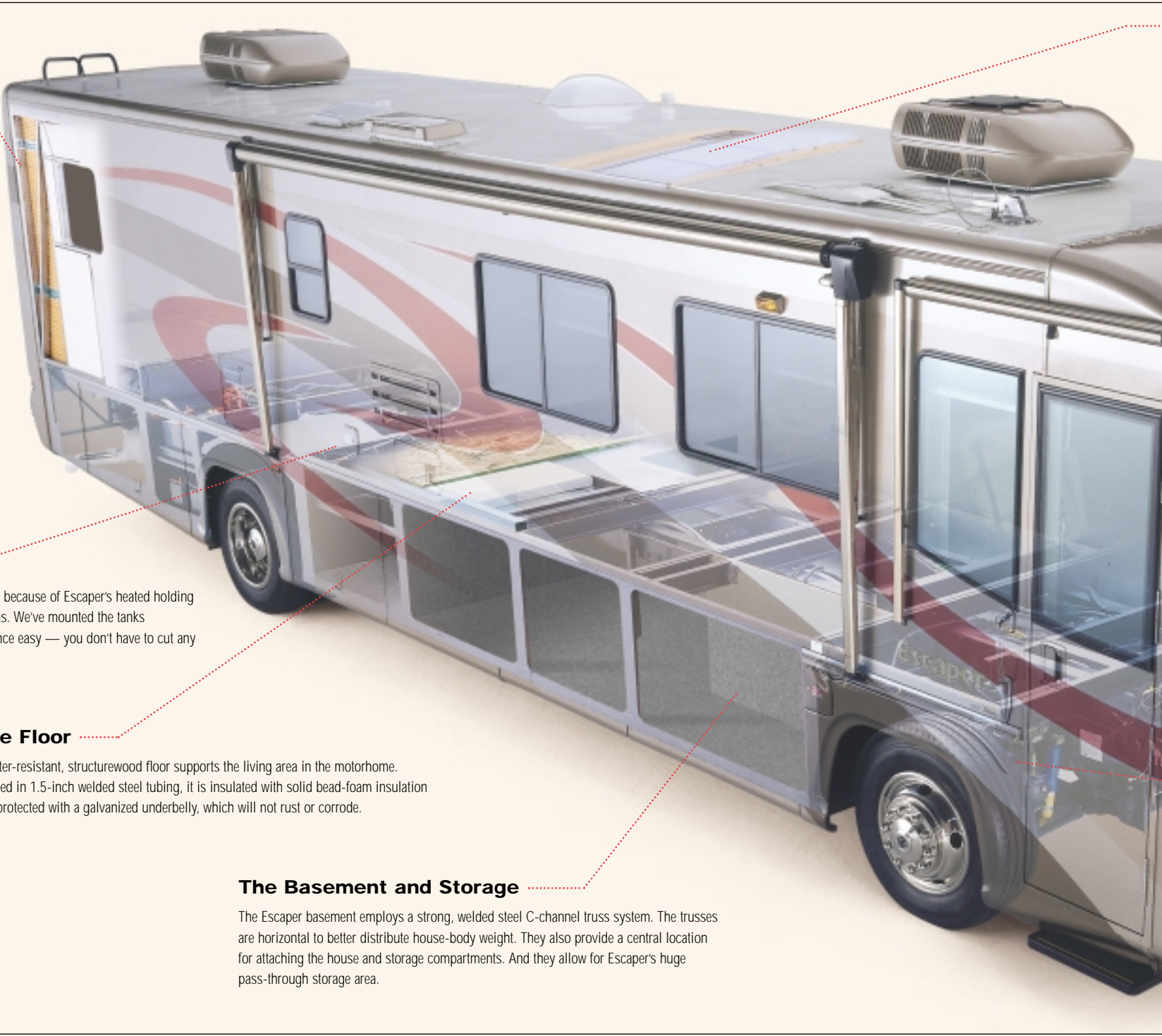


Surroundsound® home theater



Keyless entry





## The Sidewalls

Sidewalls are five layers thick:

- Exterior fiberglass
- Luan
- Aluminum frame
- Bead-foam insulation
- Interior wallboard

The walls are also vacuum-bond laminated for added strength and rigidity. The lamination process eliminates "soft walls," because it integrates all layers, turning them into one solid structure.

All wall openings — for doors, windows and other components — are framed in aluminum tubing with welded joints. This further strengthens the coach body.

## The Utilities

It's no problem to travel in all four seasons because of Escaper's heated holding tanks and fully contained plumbing systems. We've mounted the tanks horizontally, making service and maintenance easy — you don't have to cut any steel to access the tanks.

## The Floor

A water-resistant, structurewood floor supports the living area in the motorhome. Framed in 1.5-inch welded steel tubing, it is insulated with solid bead-foam insulation and protected with a galvanized underbelly, which will not rust or corrode.

## The Basement and Storage

The Escaper basement employs a strong, welded steel C-channel truss system. The trusses are horizontal to better distribute house-body weight. They also provide a central location for attaching the house and storage compartments. And they allow for Escaper's huge pass-through storage area.



## The Roof

Escaper's standard one-piece fiberglass roof is seamless, which means that it will remain virtually maintenance-free as long as you own your motorhome.

It features an aluminum rafter support system with bowed rafters to maintain the roof's crowned shape. A crowned roof permits better water runoff, which helps prevent leaks. It also increases the insulation factor, especially around air-conditioner channels.



# Dare to go anywhere: Escaper's built to take it.

What makes the difference? Advanced engineering. Computer-aided design. Innovative manufacturing techniques. And paying attention to feedback from RVers just like you.

At Damon, we also maintain consistent standards. Many other manufacturers cut corners. Not us. Every motorhome we make, whatever the price, gets built the same way — the right way — with the same high-quality materials, components and construction techniques.

10,000-lb. towing capacity



Leveling jacks



## The Chassis

Quality construction starts with the chassis. And Escaper uses only the finest. Choose either a Freightliner® raised-rail chassis with a 330-hp Caterpillar® engine or a Spartan® raised-rail chassis with a 350-hp Cummins® engine. Either way, you'll have the power you need wherever your adventures take you.

Ashton Manor



Central Park



Manhattan



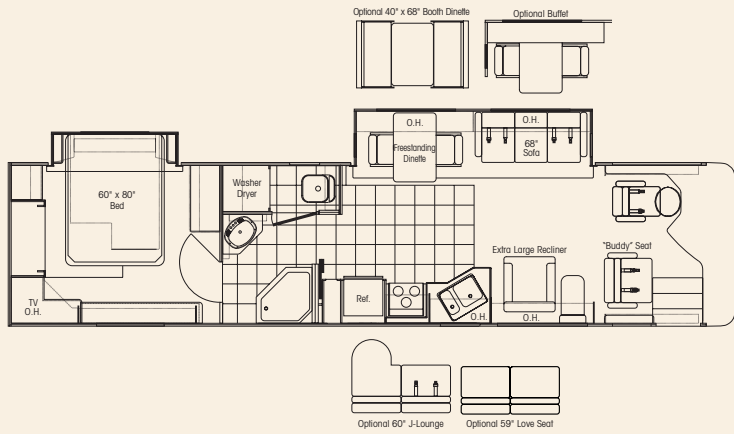
Wellington Place



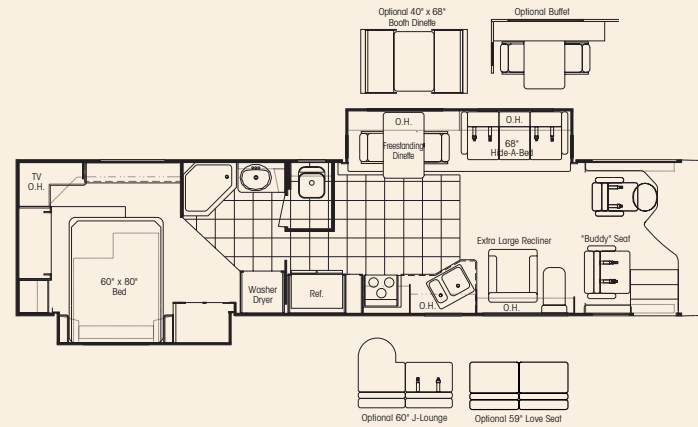
Maple



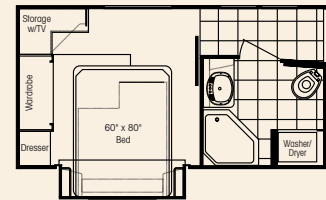
**3977** Slideout living area • Lots of interior storage • Slideout bed



**3979** Slideout living area • Private stool • Slideout bed and wardrobe



**4076** Slideout living area



Saddle Brown



Steel Blue



Taupe Frost



Oak

Walnut



# Daring choices ... to fit your life.

## Décor

Damon's interior designers and engineers have created a choice of exciting environments that not only help you feel right at home, but also lend a sense of personality to your Escaper.

## Floor Plans

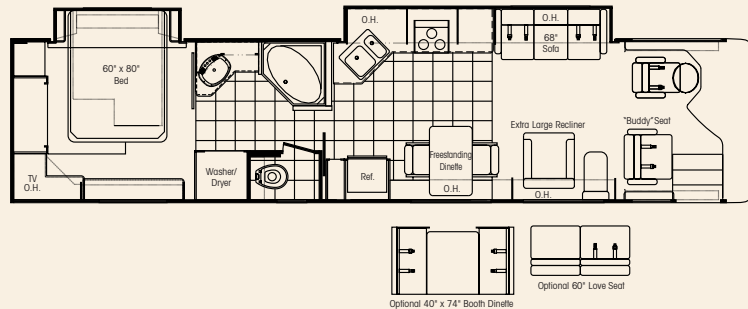
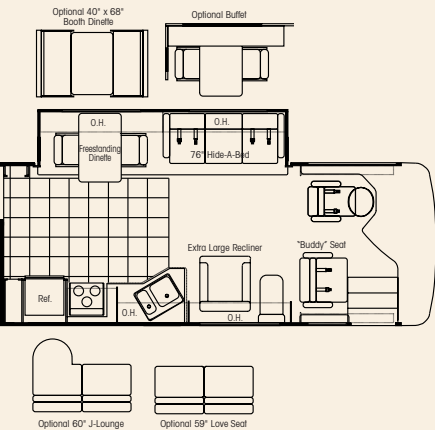
Whichever Escaper floor plan you choose, you can be sure it's thoughtfully laid out to provide the roomiest, most comfortable, most convenient mobile living experience you've ever had.

## Paint

Gorgeous automotive full-body exterior paint in a choice of colors gives Escaper a distinctly upscale look. It's a new option for 2003 that's already turning heads and attracting a lot of buzz.

• Large bathroom • Slideout bedroom

**4087** Slideout kitchen • Private stool • Lots of counterspace



Brown/Russet



Taupe/Black



Grey/Blue



Bathroom	3977	3979	4076	4087
Full-height fiberglass tub or shower with door	S	S	S	S
Skylight in shower	S	S	S	S
Obscure glass window in private stool area	S	S	S	S
Power vent	S	S	S	S
Foot-flush porcelain toilet with sprayer	S	S	S	S
Medicine cabinet with mirrored-hardwood-framed door	S	S	S	S
Wallpaper border in private stool area	S	S	S	S
Corian® countertop with backsplash	S	S	S	S
Solid-surface sink	S	S	S	S
Lined overhead cabinets throughout	S	S	S	S

Bedroom	3977	3979	4076	4087
Pillowtop sleep-well mattress	S	S	S	S
Bedspread with pillow shams and toss pillows	S	S	S	S
Carpet-lined wardrobe with mirrored doors	S	S	S	S
Wardrobe lights	S	S	S	S
TV cabinet and jack	S	S	S	S
19" color TV	S	S	S	S
Boxed window treatments	S	S	S	S
Pin-up lights	S	S	S	S
AM/FM/cassette stereo	S	S	S	S
Lined overhead cabinets throughout	S	S	S	S
Private stool area	S	S	N/A	S
Private bed/bath area	N/A	N/A	S	S

Chassis	3977	3979	4076	4087
330-hp Caterpillar® engine with 860 ft. lb. torque, Freightliner® raised-rail chassis	0	0	0	0
350-hp Cummins® engine with 1050 ft. lb. torque, Spartan® raised-rail chassis with Alcoa® wheels	0	0	0	0
In-block engine heater	S	S	S	S
Leece Neville® 160-amp, 12-volt alternator	S	S	S	S
Allison® MH-3000 automatic transmission - 6-speed	S	S	S	S

Chassis (con't.)	3977	3979	4076	4087
Exhaust brake	S	S	S	S
Full air brakes with auto slack adjusters (front and rear)	S	S	S	S
Wabco® antilock brakes	S	S	S	S
Midland® Pure-Air Plus™ heated air dryer	S	S	S	S
Air suspension system	S	S	S	S
Independent front suspension (Spartan® only)	S	S	S	S
22.5" Radial tires	S	S	S	S
Leveling jacks	S	S	S	S
Front and rear mud flaps	S	S	S	S
Trailer hitch (10,000 lbs.)	S	S	S	S
Emergency start circuit	S	S	S	S
Under-hood light	S	S	S	S
Layer of neoprene vibration dampener	S	S	S	S
Dual fuel fills	S	S	S	S

Cockpit	3977	3979	4076	4087
Molded ABS dash	S	S	S	S
Full instrumentation	S	S	S	S
Electronically controlled dash air conditioning	S	S	S	S
Premium AM/FM/CD player	S	S	S	S
Premium AM/FM/cassette radio with multi-disk CD changer	0	0	0	0
XM satellite radio tuner	0	0	0	0
Premium 4-speaker system with powered subwoofer	S	S	S	S
Electronic cruise control	S	S	S	S
Power steering	S	S	S	S
Padded steering wheel	S	S	S	S
Douglas® tilt/telescoping steering column	S	S	S	S
Map lights	S	S	S	S
Auxiliary defroster system	S	S	S	S
Air horns	S	S	S	S
Tinted wraparound windshield	S	S	S	S
Windshield privacy wrap	S	S	S	S

S = Standard    0 = Optional    N/A = Not available    I/P = In place of

Cockpit (con't.)	3977	3979	4076	4087
Front-mounted power mirrors with heat	S	S	S	S
Chrome-plated front-mounted power mirrors	0	0	0	0
Floor mats	S	S	S	S
Ultra-leather driver's seat with 6-way power	S	S	S	S
Ultra-leather passenger buddy-style seat with 6-way power	S	S	S	S
Ultra-leather passenger buddy-style seat with 6-way power and electric foot rest	0	0	0	0
3-point integrated seat and shoulder belts	S	S	S	S
Storage cabinets above driver and passenger	S	S	S	S
Rosen® full-size sun visors	S	S	S	S
Carefree® electric sun visors with one manual side shade	0	0	0	0
Backup monitor system with audio	S	S	S	S
Power flush-floor step well cover	S	S	S	S
Drink holders	S	S	S	S
Second generation automotive-style wiring harness	S	S	S	S
Exterior	3977	3979	4076	4087
Paint and graphics	S	S	S	S
Full-body paint package	0	0	0	0
Seamless fiberglass roof	S	S	S	S
Color-coordinated Carefree® awnings	0	0	0	0
Color-coordinated Carefree® window awnings (only available with full-body paint)	0	0	0	0
Fog lights	S	S	S	S
Wide-body design	S	S	S	S
Radius-cornered domed roof	S	S	S	S
Seamless fiberglass roof	S	S	S	S
Roof vents	S	S	S	S
Rear ladder	0	0	0	0
Aerodynamic front and rear fiberglass caps	S	S	S	S
Contoured front and rear integrated bumpers	S	S	S	S
Awning rail	S	S	S	S

Exterior (con't.)	3977	3979	4076	4087
Side-mounted patio awning (Awnings not available on wide-body models in some locations. Check local regulations for applicable laws.)	0	0	0	0
Side-mounted front door awning	0	0	0	0
Side-mounted awning over slideout	S	S	S	S
Carefree® electric patio awning	0	0	0	0
Carefree® front door awning	0	0	0	0
Remote control for Carefree® electric patio awning	0	0	0	0
Entry-assist lighted grab handle	S	S	S	S
Molded and gel-coated fiberglass sidewalls	S	S	S	S
Locking exterior storage doors	S	S	S	S
Custom-designed front entry door with screen	S	S	S	S
Remote keyless entry with panic button	S	S	S	S
Black-framed radius-cornered windows	S	S	S	S
Dual-pane windows	S	S	S	S
2 porch lights (one on each side)	S	S	S	S
Lighted storage compartments	S	S	S	S
Pass-through basement storage	S	S	S	S
Easy-slide storage tray in basement	0	0	0	0
Exterior entertainment center with 19" TV	0	0	0	0
Gas pistons on exterior storage doors	S	S	S	S
Sewer hose storage	S	S	S	S
RVQ grill	0	0	0	0
Kitchen	3977	3979	4076	4087
Refrigerator: large flush-mounted, double-door	S	S	S	S
Refrigerator: side-by-side with icemaker IPO standard refrigerator and pantry	0	0	0	0
Refrigerator: solid-wood front	S	S	S	S
3-burner range and oven	S	S	S	S
Cooktop IPO range and oven	0	0	0	0
Corian® range cover	S	S	S	S

Kitchen (con't.)	3977	3979	4076	4087
Microwave/convection oven	S	S	S	S
Wall-mounted monitor panel with LPG readout	S	S	S	S
Single-lever faucet with sprayer	S	S	S	S
Pantry	S	S	S	S
Corian® countertops	S	S	S	S
Solid-surface double-bowl sink	S	S	S	S
2 Corian® sink covers	S	S	S	S
Raised-panel hardwood cabinet doors throughout	S	S	S	S
Premium walnut interior	0	0	0	0
Hidden hinges with premium door hardware	S	S	S	S
Ceramic tile flooring in kitchen and bath	S	S	S	S
Freestanding dinette with 2 chairs	S	S	S	S
2 folding chairs (available with freestanding dinette only)	0	0	0	0
Booth dinette with padded top, deep storage drawers and solid-surface edged table	0	0	0	0
Micro mini blinds	S	S	S	S
Fire extinguisher	S	S	S	S
Lined overhead cabinets throughout	S	S	S	S
Buffet with additional storage	0	0	0	N/A

Living Area	3977	3979	4076	4087
Extra-large recliner with footrest (cloth)	S	S	S	S
Extra-large recliner with footrest (ultra-leather)	0	0	0	0
Lounge table (N/A with J-lounger)	S	S	S	S
J-lounger (ultra-leather) (replaces recliner and lounge table, N/A with hide-a-bed)	0	0	0	0
Hide-a-bed (cloth) (N/A with J-lounger)	S	S	S	N/A
Hide-a-bed (ultra-leather) (N/A with J-lounger)	0	0	0	N/A
Love seat (ultra-leather) (replaces recliner and lounge table)	0	0	0	0
Magic bed (cloth) (replaces hide-a-bed in 3977, 3979, 4076 with J-lounger option)	0	0	0	S
Magic bed (ultra-leather) (replaces hide-a-bed in 3977, 3979, 4076 with J-lounger option)	0	0	0	0
Day/night shades	S	S	S	S

Living Area (con't.)	3977	3979	4076	4087
100% continuous-filament nylon carpeting with carved insert	S	S	S	S
27" color TV in cockpit overhead with full-function remote, antenna booster and jack	S	S	S	S
Video package (VCR and control center)	S	S	S	S
Theater TV/VCR sound	S	S	S	S
Home theater package (DVD/CD player and 5-channel Dolby® Pro-Logic receiver amplifier)	0	0	0	0
Fabric ceiling	S	S	S	S
Fluorescent lighting throughout	S	S	S	S
Living area pin-up lights	S	S	S	S
Aisle lights	S	S	S	S
Fantastic® power vent	S	S	S	S
Fantastic® power vent with rain sensor	0	0	0	0
Lined overhead cabinets throughout	S	S	S	S

Utilities	3977	3979	4076	4087
Air conditioner: 13,500-BTU ducted central (front and rear)	S	S	S	S
Dual heat pumps with 15,000-BTU A/C and 12,700-BTU heat	0	0	0	0
5-watt chassis solar battery charger (N/A with low-profile A/C or heat pump)	S	S	S	S
60-watt solar panel for house batteries	0	0	0	0
40,000-BTU electronic ignition floor-ducted furnace	S	S	S	S
Water heater: 10-gallon gas/electric	S	S	S	S
Water heater: Motoraid® 10-gallon gas/electric	0	0	0	0
Water heater bypass kit	S	S	S	S
Generator: 6.3 kW Onan® LP	S	S	S	S
Generator: 7.5 kW Onan® diesel	0	0	0	0
2500-watt inverter	0	0	0	0
Entertainment inverter (N/A 2500-watt inverter)	S	S	S	S
Converter: solid-state 75-amp, 12-volt	S	S	S	S
12-volt demand water pump	S	S	S	S
6-volt Thermoil® auxiliary batteries (2 standard, 4 with 2500-watt inverter)	S	S	S	S
Electronic battery distribution center	S	S	S	S

Utilities (con't.)	3977	3979	4076	4087
Battery disconnect	S	S	S	S
50-amp, 120-volt Service with marine-type detachable power cord	S	S	S	S
Electric power cord reel	0	0	0	0
Exterior GFCI receptacle	S	S	S	S
Enclosed heated potable and holding tanks	S	S	S	S
Black-water tank flush	S	S	S	S
City water hookup	S	S	S	S
Water filtration system	S	S	S	S
Washer/dryer prep	S	S	S	S
Washer/dryer combo	0	0	0	0
Telephone hookup	S	S	S	S
Cable TV/satellite hookup	S	S	S	S
Pre-wired for roof-mounted satellite dish	S	S	S	S
DSS manual satellite dish	0	0	0	0
DSS automatic tracking satellite dish	0	0	0	0
Exterior shower	S	S	S	S
Carbon monoxide detector	S	S	S	S
LP gas detector	S	S	S	S
Smoke detector	S	S	S	S

Weights and Measures	3977	3979	4076	4087
Chassis	F/S*	F/S*	F/S*	F/S*
Wheelbase	242"	242"	252"	252"
GVWR (lbs.)	31000	31000	31000	31000
GCWR (lbs.)	41000	41000	41000	41000
Overall length	39'2"	39'2"	40'0"	40'0"
Overall width	101"	101"	101"	101"
Overall height with A/C	12'3"	12'3"	12'3"	12'3"
Fresh water system (appx. gal.)	109	109	109	109
Gray water (appx. gal.)	50	50	50	50
Black water (appx. gal.)	50	50	50	50
LP (lbs.)	126	126	126	126
Sleeping capacity	4	4	4	4
Std. wt. (appx. lbs.)	22414/23463	22712/23761	23051/24100	23471/24520
Exterior storage capacity (cu. ft.)	180/165	180/165	188/179	188/179
Interior drawers/capacity (cu. ft.)	25/15	37/18	29/19	31/21

The weights listed are for units with full fuel tanks and no options. \*Freightliner/Spartan\*

Due to constant product improvements, the specifications, component parts and standard/optional equipment are subject to change without notice or obligation. Product photography or diagrams may show equipment that is optional. Damon Corporation reserves the right to make changes in prices and models and to discontinue models without notice or obligation. Components, parts or chassis may have been manufactured at times other than the model year indicated. All capacities are approximate and dimensions are nominal. All dry weights are based on standard model features and do not include optional features or equipment. Various RV components and features may differ to conform to local codes. DC 9/02 © 2002 Damon Corporation Printed in U.S.A.





*Damon*  
Value by Design

If you are interested in touring Damon's manufacturing facilities, please visit our web site or call 800-860-5658.

**Damon Corporation • P.O. Box 2888 • Elkhart, IN 46515**

Literature or Dealers: 574-389-0179 or 800-577-5692

Customer service: 800-860-3812.

**[www.DamonRV.com](http://www.DamonRV.com)**