

FREEDOM VISION



STANDARD FEATURES

INTERIOR APPOINTMENTS

- ◆ Brazilian Cherry Cabinetry
- ◆ Designer Kitchen Countertop
- ◆ Satin Nickel Hardware & Fixtures
- ◆ Hardwood Doors & Drawers
- ◆ 6-Panel Interior Doors
- ◆ Hidden Cabinet Door Hinges
- ◆ Techwood Drawer Sides
- ◆ Ceramic Grouted Tile Flooring (Kitchen & Bath)
- ◆ Patterned Carpet (Living & Bedroom)
- ◆ Reclining Pilot & Passenger Seats
- ◆ Jacknife Sofa w/Storage
- ◆ Lounge Chair (3540 DS)
- ◆ Booth Dinette
- ◆ Pleated Shades Throughout
- ◆ Vinyl Soft Touch Ceiling
- ◆ Owners Information Packet

APPLIANCES & ACCESSORIES

- ◆ 15" LCD TV w/DVD (3540 DS)
- ◆ 27" Flatscreen TV w/ATSC Digital Tuner (Coach) (3150 DS)
- ◆ 32" LCD TV (3540 DS)
- ◆ Surround Sound (Coach)
- ◆ AM/FM CD Player w/4 Speakers
- ◆ Cable TV Jacks
- ◆ Closet Hanger
- ◆ Phone Jack
- ◆ Prewire for Satellite Antenna
- ◆ TV Antenna & Rotor Package

GALLEY

- ◆ Lighted Range Hood
- ◆ Double Door Refrigerator w/Stainless Inserts
- ◆ Designer Kitchen Faucet
- ◆ Silverware Drawer
- ◆ Sealed 3-Burner Range
- ◆ Half Time Convection/Microwave Oven
- ◆ Wire Pantry Baskets
- ◆ Flip up Countertop Extension

BATH & WATER

- ◆ Porcelain Toilet w/Foot Flush
- ◆ One Piece ABS Tub Surround
- ◆ Designer Lav Countertop
- ◆ Power Bath Vent

- ◆ 6-Gallon Gas/Electric E.I. Water Heater
- ◆ Demand Water Pump
- ◆ Skylight Over The Shower
- ◆ Water Heater Bypass
- ◆ Glass Shower Door
- ◆ Whole House Water Filter System
- ◆ Black Tank Rinse System
- ◆ No Mess™ Termination

SLEEPING

- ◆ Queen Bed 60" x 80" (3540 DS)
- ◆ Comfort Select Mattress
- ◆ Bedspread
- ◆ Bunk Beds 32" X 74" (3540 DS)
- ◆ Windshield Privacy Drape

ELECTRICAL & LIGHTING

- ◆ 50 Amp Power Cord
- ◆ GFI Circuit
- ◆ Outside 120V Receptacle (Driver's)
- ◆ Lighted Storage Boxes w/Switch
- ◆ Patio Light
- ◆ 1200W Inverter/Converter
- ◆ (2) Deep Cycle Coach Batteries
- ◆ Battery Disconnect
- ◆ Coach Command Center
- ◆ Exterior Entertainment Receptacle - Trunk

HEATING & AIR CONDITIONING

- ◆ 5.5 KW ONAN Gasoline Generator
- ◆ 30,000 BTU E.I. Ducted Furnace
- ◆ 13,500 BTU Front Roof A/C - Ducted
- ◆ Second 13,500 BTU Rear Roof A/C - Ducted
- ◆ Entry Step Switch Panel
- ◆ 85 lb. LP Tank
- ◆ Heated/Enclosed Holding Tanks

COCKPIT

- ◆ Tilt Steering Wheel
- ◆ Cruise Control
- ◆ Intermittent Wipers
- ◆ Dash Air Conditioning
- ◆ Emergency Start Switch
- ◆ Wall Mounted Cup Holders
- ◆ Defroster Assist Fans
- ◆ 12V Power Outlets at Dash (2)
- ◆ 3-Way Rear Vision Camera

EXTERIOR & CONSTRUCTION

- ◆ Tinted Safety Glass Windows
- ◆ Radial Tires
- ◆ Automatic Power Entrance Step
- ◆ Deluxe Lighted Exterior Grab Handle
- ◆ Slideout Awnings
- ◆ Crowned, Laminated TPO Roof
- ◆ Basement Floor Design
- ◆ Bus Style Baggage Doors
- ◆ Custom Fiberglass Front & Rear Caps
- ◆ Lined Metal Trunk Boxes
- ◆ Dead Bolt Lock - Entrance Door
- ◆ Radius Entry Door
- ◆ Patio Awning
- ◆ 5,000 Towing Hitch w/7-Way Plug
- ◆ Rear Mounted Roof Ladder
- ◆ Remote Heated Exterior Mirrors
- ◆ Stainless Steel Wheel Liners
- ◆ Automotive Underbody Undercoating
- ◆ Pushbutton Fully Automatic Hydraulic Leveling Jacks
- ◆ Spare Tire (3540 DS)

SAFETY

- ◆ LP Leak Alarm
- ◆ Smoke Detector
- ◆ Carbon Monoxide Detector
- ◆ Fire Extinguisher

OPTIONS

- Wardrobe IPO Bunk Beds (3540 DS)
- 20" Bedroom Flatscreen TV
- CSA Upfit*

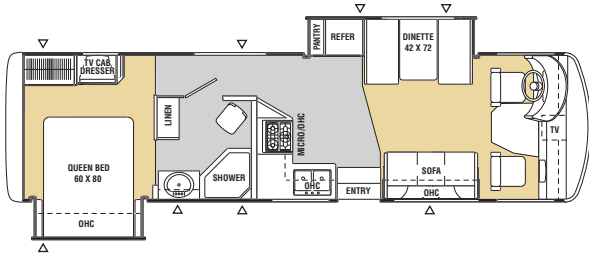
INTERIOR/EXTERIOR COLOR CHOICES

- Oxford Onyx with Oxford Onyx Painted Skirt and Graphics
- Classical Cream with Classical Cream Painted Skirt and Graphics

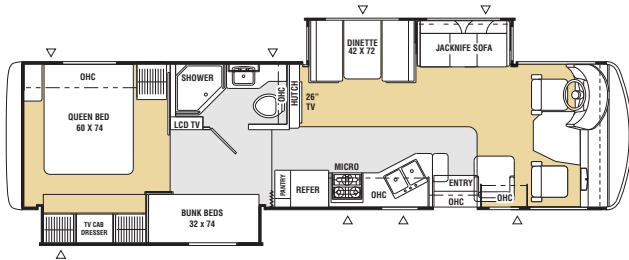
*Mandatory for Canadian Provinces

FREEDOM VISION

FLOORPLANS



3150 DS



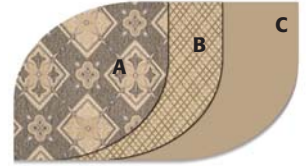
3540 DS

PAINT GRAPHICS AND DECOR

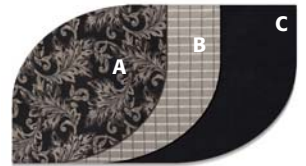
FABRIC KEY: A. Main B. Accent C. Bedspread



CLASSICAL CREAM



OXFORD ONYX



All information contained in this brochure is believed to be accurate at the time of publication. However, during the model year, it may be necessary to make revisions and Coachmen reserves the right to make all such changes without notice, including changes in prices, colors, materials, equipment and specifications, as well as the addition of new models and the discontinuance of models shown in this brochure. Therefore, please consult with your Coachmen dealer and confirm the existence of any materials, design or specifications that are material to your purchase decision.

FREEDOM VISION CLASS A

3150 DS

3540 DS

FREEDOM VISION CLASS A	3150 DS	3540 DS
Chassis	Ford	Ford
Chassis Model	F-53	F-53
Engine Size	V10-6.8L	V10-6.8L
Wheel Base	228"	242"
Rear Axle Ratio	5.38	5.38
Tire Size	245/70R19.5F	245/70R19.5F
GVWR (lbs.)	20,500	22,000
CW (lbs.)	16,800†	18,400†
GAWR Front (lbs.)	7,000	7,500
GAWR Rear (lbs.)	13,500	14,500
GCWR (lbs.)	26,000	26,000
Exterior Length	32'7"	35'6"
Exterior Height*	11'9"	11'9"
Exterior Width	8'4"	8'4"
Exterior Storage Capacity (cu. ft.)	120	148
Sleeping Capacity	4	5
Interior Width	96"	96"
Interior Height	80"	80"
Fuel Capacity (gal.)	75	75
Alternator Amps	110	110
Fresh Water Capacity (gal.)	80	86
Waste Water Capacity (gal.)	45	45
Grey Water Capacity (gal.)	48	48
Water Heater Capacity (gal.)	6	6
LP Gas Capacity (lbs.)	85	85
Furnace Rating (x1000) BTU	30	35

†Estimated

*Includes clearance for roof A/C

Coachmen Recreational Vehicle Company, LLC

P.O. Box 30 ■ Middlebury, IN 46540

P.O. Box 948 ■ Fitzgerald, GA 31750

©2007 Coachmen Recreational Vehicle Company, LLC ■ All rights reserved. Litho in USA 2/08