

Sunrise
2003



If you're ready for a Class A motor home loaded with features at a price that won't break the bank, there's no better value than the 2003 Itasca Sunrise. Not only is it manufactured with renowned Winnebago Industries® construction quality, it's also loaded with standard features that often aren't even options in comparably priced motor homes.

Three Sunrise models include double slides for added interior space. Hydraulic leveling jacks, solid-surface countertops, BenchMark™ full comfort dinette, dual-glazed/thermo-insulated windows and a driver's door all come standard. Top it off with an impressive list of available features and you're sure to find an Itasca Sunrise that's perfect for you.



ENTERTAINING GUESTS AND RELAXING are some of the best benefits of owning a motor home. The StoreMore® slideout system not only expands your living space, it allows interior and exterior storage compartments to extend with the slideroom. This increases storage capacity without impeding your headroom. Extra comfort is provided by the ceiling-ducted roof air. Adjustable vents are located throughout the motor home for optimal climate control. A heat pump is also available to help warm your motor home on cool mornings without using the furnace. For increased thermal efficiency, dual-glazed/thermo-insulated windows come standard.



The Rest Easy™ Multi-Position Lounge is designed for maximum seating flexibility and comfort. It starts as a comfortable couch and transforms into a relaxing recliner with a pullout ottoman at the touch of a button. Press the button again and you have a contoured 75" x 60" bed. (Available in the 32V, 34D and 36M models.)

SOLID-SURFACE COUNTERTOP SPACE is optimized with this L-shaped galley. A flip-up countertop extension provides even more workspace. The flexibility of a three-burner Magic Chef® range with oven and a touch control microwave is perfect for a quick snack or a full meal. Cleanup is easy in the double-bowl molded sink that accommodates large pots and pans. A side pantry and large double-door refrigerator/freezer is standard. For even more cold storage choose the 4-door refrigerator/freezer available on the 34D and 36M. Cabinet doors and drawers are protected by a catalyzed finishing process, providing a highly-durable, luxurious satin finish typically found only in exclusive home cabinetry.



INTERIOR DECORS

WINTER BIRCH



GREENGAGE



BAYWATER



PORTSMOUTH OAK WOODGRAIN



SELECT MODELS OFFER AN AVAILABLE DINING TABLE. It provides an elegant dinner setting for two and easily expands to accommodate guests.



AN EVENING IN YOUR SUNRISE IS AN EVENING AT HOME. Stretch out on the premium Stitchcraft furniture. Read by the soft light of the incandescent reading lamps. Or watch your favorite show on the 25" TV. A VCR and digital satellite dish are available to expand your viewing options. You can even use the TV and VCR without shoreline or generator power when you choose the available 300 watt inverter. The driver and passenger cab seats recline, swivel and are both available in UltraLeather HP™ with adjustable lumbar support for added driving comfort.



DESIGNED FOR DRIVER COMFORT, the switches and controls on the dashboard are sized and positioned for easy operation. The available rearview monitor includes a one-way audio feature for safe backing and maneuvering. The dash also flips up for easier servicing and quick access to automotive fuses.

Trim panels offer added conveniences like built-in cupholders and storage areas. The passenger-side trim panel also includes a magazine/map storage area, a tissue box holder and an auxiliary 12-volt powerpoint.



KEEP INFORMED AND ENTERTAINED. Winnebago Industries engineers worked closely with the RV-RADIO™ manufacturer to create a radio specifically for motor home applications. The Sunrise AM/FM stereo radio has both a cassette and CD player for added versatility. The large control knobs and buttons are easy to operate. Plus, a built-in weather band feature provides weather updates at the touch of a button.



THE 2003 SUNRISE features the versatile new BenchMark™ full comfort dinette. The seats in this innovative dinette include an innerspring seat cushion for residential comfort. Simply flip up the seat to access the large storage areas. Or fold down the table and seats to create a comfortable bed.

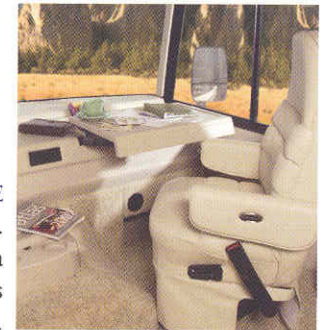


CHECK THE STATUS OF ONBOARD SYSTEMS QUICKLY and easily with the flush-mounted monitor panel. It's located in the galley area for your convenience.



THE POWERLINE™ ENERGY MANAGEMENT SYSTEM monitors electrical usage and delegates power to the essential systems during periods of heavy demand.

A MULTI-FUNCTIONAL SPACE is provided with the available workstation. Perfect for writing letters or working on a laptop computer, this design even allows for handy undertray storage.



ENJOY A HOT SHOWER immediately after a day of travel, thanks to our unique Motoraid feature. Utilizing engine heat, Motoraid creates a supply of hot water while you drive so you don't have to wait for the water heater to heat up. A 110-volt/LP water heater is also available for added flexibility.



THE REAR SLIDEOUT CREATES A SPACIOUS BEDROOM with room for plenty of extras. The walk-around queen bed with a Serta® mattress includes a large storage compartment beneath it. Hanging storage is provided by a three-door mirrored wardrobe. Drawers beneath the wardrobe are provided for your folded clothes.*



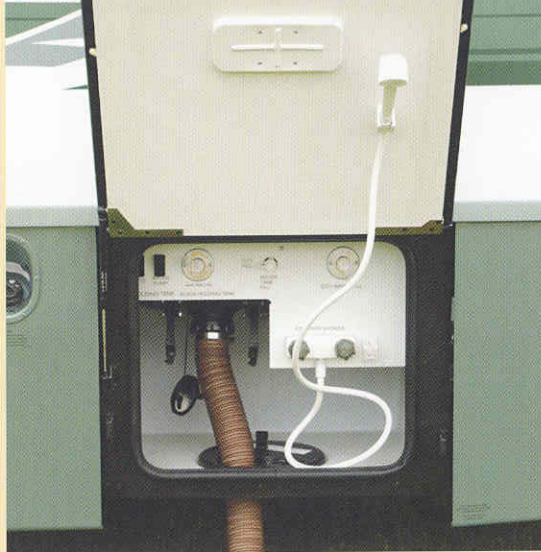
BUILT-IN RAIN GUTTERS channel rainwater and condensation runoff away from the entrance door and windows to help keep your coach clean and streak free.



EXTERIOR MIRRORS feature both flat and convex surfaces for better visibility. Electric/remote controls make adjustments easy. Activate the heating element to quickly clear frost and condensation.



AN EXTERIOR ENTERTAINMENT CENTER lets you listen to your favorite music as you enjoy the great outdoors. This available feature includes an AM/FM stereo with cassette or CD player, two speakers, a 12-volt powerpoint, a TV jack and a TV table.



RINSE OFF SAND AND DIRT outside with the exterior wash station. It's conveniently located in the water service center along with other frequently used plumbing features.



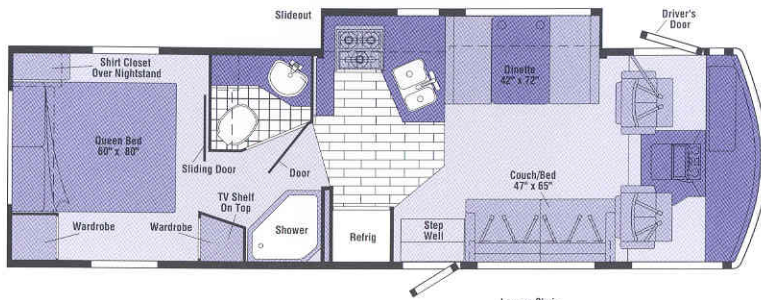
ONE KEY OPENS MOST EVERYTHING, thanks to the innovative KeyOne™ lock system. The double-bitted key, which can be inserted in either direction, opens most exterior compartments and doors so you won't have to fumble through an entire pocket full of keys to find the one you want.

NEVER BE LIMITED to shoreline power. A 4,000 watt Onan® MicroQuiet™ generator is standard on the 30W. All other models feature a standard 5,500 or available 7,000 watt Onan Marquis Gold™ generator.



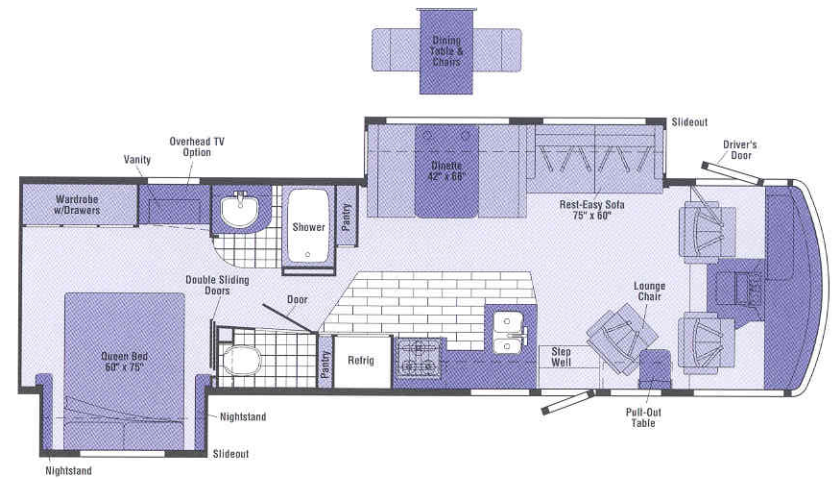
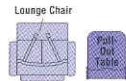
ACCESS STORED GEAR WITH EASE. Every Sunrise incorporates the StoreMore slideout system, which allows exterior compartments to extend with the slideroom for easy access. A Winnebago Industries original, StoreMore is still the industry's premier slideout system. The oversized, unobstructed compartments allow you to carry large or odd-shaped items. Compartment doors include one-piece aluminum exteriors for added strength and durability, along with single-paddle latches and gas struts to open and stay open. An advanced compartment seal-plane design helps keep out moisture and dust.





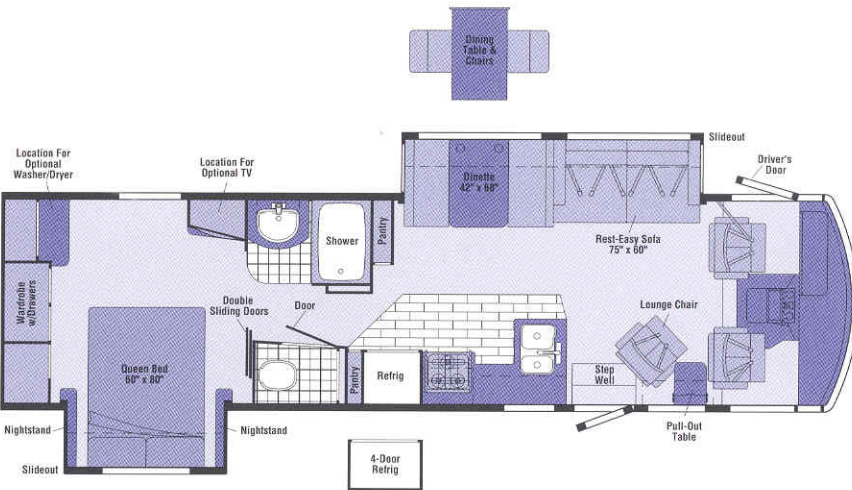
30W

- Dinette/galley **STOREMORE** slideout system
- Private bath w/ large shower
- Available lounge chair w/ pull-out table



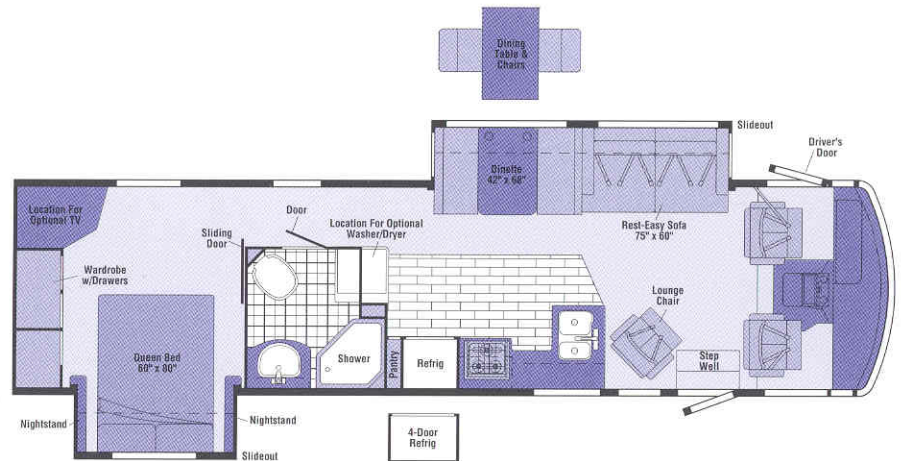
32V

- Sofa/dinette **STOREMORE** slideout system
- Bedroom slideout w/ large wardrobe and vanity area
- Split bath design w/ private toilet area
- Dual pull-out pantries
- **REST EASY** Multi-Position Lounge



34D

- Sofa/dinette **STOREMORE** slideout system
- Bedroom slideout w/ large, rear-wall wardrobe
- Available washer/dryer
- **REST EASY** Multi-Position Lounge



36M

- Sofa/dinette **STOREMORE** slideout system
- Bedroom slideout w/ large, rear-wall wardrobe
- Large private bath area
- Unique side-aisle floorplan
- Available washer/dryer
- **REST EASY** Multi-Position Lounge



Note: Dimensions shown are for sleeping space only and may vary due to styling differences. Dashed lines denote overhead storage areas.

THE PERFECT BLEND OF FUNCTION AND STYLE.

The Itasca Sunrise is equipped with stainless steel wheel liners and hydraulic leveling jacks for added stability. The available patio awning can be added for instant shade.*



2003 SUNRISE SPECIFICATIONS

| | 30W | 32V | 34D | 36M |
|--|---------------|---------------|---------------|---|
| Length | 30'9.9" | 32'10.4" | 34'3.9" | 35'9.8" |
| Exterior Height w/A/C* – Ford®/Workhorse™ | 11'10"/12'0" | 11'11"/11'11" | 11'10"/12'2" | 12'1"/11'10" |
| Exterior Width^ | 8'5.5" | 8'5.5" | 8'5.5" | 8'5.5" |
| Exterior Storage[∞] – Ford®/Workhorse™ (cu. ft.) | 72/72 | 78.6/76.5 | 91.1/91.1 | 120.3/120.3 |
| Interior Height | 6'8" | 6'8" | 6'8" | 6'8" |
| Interior Width | 8'0.5" | 8'0.5" | 8'0.5" | 8'0.5" |
| Fresh Water Cap. w/Heater* – Ford®/Workhorse™ (gal.) | 84/84 | 86/64 | 86/86 | 76/76 |
| Holding Tank Capacity – Black/Gray (gal.) | 40/54 | 50/45 | 50/45 | 40/67 |
| LP Cap.∇ (gal.) | 23 | 28 | 28 | 28 |
| Fuel Cap. – Ford®/Workhorse™ (gal.) | 75/75 | 75/75 | 75/75 | 75/75 |
| GCWR – Ford®/Workhorse™ (lbs.) | 26,000/21,000 | 26,000/21,000 | 26,000/26,000 | 26,000/26,000 |
| GVWR – Ford®/Workhorse™ (lbs.) | 18,000/18,000 | 20,500/18,000 | 20,500/20,700 | 20,500 [□] /22,000 [®] /20,700 [□] |
| GAWR – Front, Ford®/Workhorse™ (lbs.) | 7,000/6,000 | 7,000/6,000 | 7,000/7,500 | 7,000 [□] /7,500 [®] /7,500 [□] |
| GAWR – Rear, Ford®/Workhorse™ (lbs.) | 11,000/12,000 | 13,500/12,000 | 13,500/13,500 | 13,500 [□] /14,500 [®] /13,500 [□] |
| Wheelbase – Ford®/Workhorse™ | 190"/190" | 208"/208" | 220"/220" | 228"/228" |

AUTOMOTIVE/CHASSIS

| | 30W | 32V | 34D | 36M |
|--|-----|-----|-----|-----|
| Chassis – Ford® 6.8L SOHC Triton™ V10 310-hp, 4-speed overdrive transmission, 4-wheel anti-lock brake system, 130-amp. alternator | 0 | 0 | S | S |
| Chassis – Workhorse™ 8.1L Vortec V8 340-hp, 4L85E 4-speed overdrive transmission, 4-wheel anti-lock brakes, 145-amp. alternator | S | S | | |
| Chassis – Workhorse™ 8.1L Vortec V8 340-hp, Allison® LCT 1000 5-speed overdrive transmission, 4-wheel anti-lock brakes, 145-amp. alternator | 0 | 0 | | |
| Leveling Jacks hydraulic, manual joystick, Tire spare, Tire Tool wrench, Trailer Hitch * 5,000-lbs. draw bar/350-lbs. maximum vertical tongue weight & wiring, Wheel Liners stainless steel | S | S | S | S |
| Stabilizer Package front shocks (Workhorse™ only) | 0 | 0 | | |

CAB AREA & DRIVER CONVENIENCES

| | 30W | 32V | 34D | 36M |
|---|-----|-----|-----|-----|
| Cab Seats (Flexsteel®) w/3-point adjustable seat belts, armrests, multi-adjustable swivel/slide/recline, fabric covered, Cigarette Lighter/12-Volt Powerpoint , | S | S | S | S |

CAB AREA & DRIVER CONVENIENCES (CONT.)

| | 30W | 32V | 34D | 36M |
|--|-----|-----|-----|-----|
| Convenience Tray , Cruise Control , Door (driver) entry, assist bar, courtesy light, Floor Mats carpet driver & passenger, Map Light , Steering Wheel tilt w/power assist, Sunvisors (2) , Trim Panels driver & passenger sides, Window (driver) power, Window (passenger) full-slider w/screen, Windshield Wipers intermittent | S | S | S | S |
| Cab Seats (Flexsteel®) UltraLeather HP™ seating surface w/manual adjustable lumbar support | 0 | 0 | 0 | 0 |
| Cab Seats Pedestal 6-way power assist (driver) | 0 | 0 | 0 | 0 |
| Defroster Fans (2) auxiliary 2-speed w/instrument panel switch | 0 | 0 | 0 | 0 |
| Monitor System rearview w/single camera & 1-way audio, Sony® | 0 | 0 | 0 | 0 |
| Workstation in dash | 0 | 0 | 0 | 0 |

ENTERTAINMENT

| | 30W | 32V | 34D | 36M |
|--|-----|-----|-----|-----|
| RV-RADIO™ (Cab) AM/FM stereo cassette/CD player & weather band, roof-mounted flexible rubber antenna, speakers (4), Radio Power Switch main/auxiliary battery, Satellite System Ready , Telephone input & interior jack, | S | S | S | S |

ENTERTAINMENT (CONT.)

| | 30W | 32V | 34D | 36M |
|--|-----|-----|-----|-----|
| TV 25" Color AC w/remote, video selection system, TV Enhancement Package antenna (amplified), 12-volt powerpoint, interior jack(s), coax wiring, cable input, antenna check reminder light, TV shelf | S | S | S | S |
| CB Prep: antenna, antenna lead, 12-volt powerpoint | 0 | 0 | 0 | 0 |
| Entertainment Center (Exterior) w/Cassette or CD Player DC receptacle, AC duplex receptacle, AM/FM radio, TV jack, radio antenna, speakers (2), lockable compartment, removable table | 0 | 0 | 0 | 0 |
| Satellite Dish Antenna Winegard® RV digital, elevation sensing unit | 0 | 0 | 0 | 0 |
| TV 19" Color AC w/remote, bedroom | 0 | 0 | 0 | 0 |
| VCR w/remote | 0 | 0 | 0 | 0 |

INTERIOR

| | 30W | 32V | 34D | 36M |
|---|-----|-----|-----|-----|
| Ceiling fabric, Clock , Cupholder(s) , Curtain front wraparound w/track, Light decorative dining light, Lights ceiling, incandescent w/wall switches, Lights fluorescent lights, recessed, galley, lounge w/wall switches, Lights reading, Picture , Shades day/night pleated (lounge, dinette, bedroom), mini blinds (galley), Windows dual-glazed/thermo-insulated | S | S | S | S |
| Magazine Rack end of galley by lounge chair | | | | S |
| Mirror | | S | S | |

CABINETY

| | 30W | 32V | 34D | 36M |
|---|-----|-----|-----|-----|
| Woodgrain Portsmouth Oak stile-and-rail construction w/raised panel inserts on upper doors | S | S | S | S |

COUNTERTOPS

| | 30W | 32V | 34D | 36M |
|-----------------------------|-----|-----|-----|-----|
| Solid-Surface galley | S | S | S | S |

FLOORCOVERING

| | 30W | 32V | 34D | 36M |
|---|-----|-----|-----|-----|
| Carpeting w/pad, Vinyl bath, Vinyl Wood Plank galley | S | S | S | S |

FURNITURE

| | 30W | 32V | 34D | 36M |
|--|-----|-----|-----|-----|
| Dinette w/access to storage below | S | S | S | S |
| Rest Easy™ Multi-Position Lounge (Stitchcraft) w/throw pillow | | S | S | S |
| Couch (Stitchcraft) w/throw pillow | | S | | |
| Lounge Chair (Flexsteel®) | | | | S |
| Lounge Chair (Flexsteel®) w/fold-up table & footrest | 0 | S | S | |
| Dining Table w/extendable pull-up leaf & chairs (2) free-standing & (2) folding | 0 | 0 | 0 | 0 |

| GALLEY | 30W | 32V | 34D | 36M |
|---|-----|-----|-----|-----|
| Faucet single-control, Microwave Oven w/range fan, Range three-burner w/oven, Magic Chef®, Range Cover , Refrigerator/Freezer large double-door, Sink double-bowl molded w/sink cover, Wall Border , Wastepaper Basket , Water Purification System cold water only | S | S | S | S |
| Coffemaker | 0 | 0 | 0 | 0 |
| Countertop flip-up extension | | S | S | S |
| Light decorative | | S | S | S |
| Pantry w/adjustable shelves | S | | S | |
| Pantry (2) slideout cabinet w/adjustable shelves | | S | S | |
| Range Top three-burner w/storage below, Magic Chef® | 0 | 0 | 0 | 0 |
| Refrigerator/Freezer* 4-door w/icemaker | | 0 | 0 | |
| Refrigerator/Freezer* large double-door w/icemaker | | 0 | 0 | |

| BATH | 30W | 32V | 34D | 36M |
|--|-----|-----|-----|-----|
| Cabinet lavatory, Cabinet medicine, Faucet (shower) single-control w/fixed showerhead, Faucet (lavatory) dual-control, Light shower, Lights makeup, Shower w/wall surround, Shower Skylight , Sink oval, Tissue Holder , Toilet porcelain, w/foot-pedal flush & sprayer, Towel Rack 3-rod, mounted to door, Towel Ring(s) | S | S | S | S |
| Cabinet linen w/adjustable shelves | S | | | |
| Magazine Rack | S | | | |
| Mirror | | | | S |
| Shower w/removable clothes rod | | S | S | |
| Shower Door folding | | S | S | |
| Shower Door textured glass | | S | | S |
| Showerhead hand-held, Shower Seat fold down | 0 | 0 | 0 | 0 |
| Wall Border private toilet area | | S | S | |

| BEDROOM | 30W | 32V | 34D | 36M |
|---|-----|-----|-----|-----|
| Bed queen, Serta® innerspring, w/underbed storage, Bedsprad pillow shams, pillows, Ceiling Molding , Lights decorative wall lamps, Nightstand(s) , Wardrobe Cabinet carpeted floor, clothes rod, drawers, light | S | S | S | S |
| Chair Rail | S | S | | |
| Mirror | | S | | |
| Shirt Closet | | S | | |
| Vanity Cabinet w/folding chair | | S | | |
| Wall Border | | S | S | |
| Corner Desk w/folding chair | | | | S |

| EXTERIOR | 30W | 32V | 34D | 36M |
|--|-----|-----|-----|-----|
| Awning Rails w/rain gutters, Door entrance w/separate screen door, deadbolt lock, Entrance Door Steps double, electric w/doorjamb switch, Graphics Packages Sand Metallic recommended w/Winter Birch & Baywater Or Cyprus Green Metallic recommended w/Winter Birch & Greengage, Ladder , Light porch light w/interior switch, Mirrors electric/remote w/defrost, convex, Mudflaps rear, Receptacle AC duplex, Sidewall Skin one-piece smooth fiberglass, high gloss, Storage Compartments valance panels, trunk liner, gas cylinders, Tri/Mark KeyOne® system, paddle latch, lights | S | S | S | S |
| Awning* patio | 0 | 0 | 0 | 0 |
| Undercoating Workhorse™ | 0 | 0 | 0 | 0 |

| SYSTEMS | 30W | 32V | 34D | 36M |
|--|-----|-----|-----|-----|
| Automotive Heater/Air Conditioner , Auxiliary Start Circuit , Batteries (Coach) (2) deep cycle, Battery (Coach) disconnect system, Battery Charge Control automatic dual, Drain 1" water tank, Electrical Distribution System AC & DC breaker panels, 45-amp. converter/charger, Generator/Shoreline Automatic Changeover Switch , Monitor Panel wall-mounted, battery condition gauge, generator hourmeter gauge, generator start/stop switch, holding tank levels, LP tank level, water heater switch & lights, water pump switch, water tank level, Powerpoint 12-volt, Roof Vent* nonpowered, galley, Roof Vent powered, bath, Service Center (Drainage/Water) city water hookup/tank diverter fill, drainage valves, exterior wash station w/pump switch,* sewer hose, Service Center (Electrical) cable input, 30-amp. power cord, Sewer Hose 10', Tank flushing system, black tank only, Tank holding, heated compartment, Tank LP, permanent mount w/gauge, Water Heater 6-gallon electronic ignition w/Motoraid® & auto heater, Water Heater Winterization Bypass Valve manual, Water Pump demand, Water System Winterizing Valve manual, Water Tank Fill gravity* | S | S | S | S |
| Air Conditioner (Roof) 14,800 BTU | S | | | |
| Air Conditioners (Roof) (2)* high efficiency w/energy management system | 0 | S | S | S |
| Furnace 35,000 BTU, low profile | | S | S | |
| Furnace 40,000 BTU, low profile | | | S | S |
| Generator* 4,000 watt, Onan® MicroQuiet™ gas | | S | | |
| Generator* 5,500 watt, Onan® Marquis Gold™ gas | 0 | S | S | S |
| Generator* 7,000 watt, Onan® Marquis Gold™ gas | 0 | 0 | 0 | 0 |
| Heat Pump(s)* | 0 | 0 | 0 | 0 |
| Inverter* DC/AC, 300 watt | 0 | 0 | 0 | 0 |
| Power Cord 50-amp. | | 0 | 0 | 0 |
| Roof Vent* nonpowered, bedroom | S | | | |
| Roof Vent powered ventilator fan,* galley | 0 | 0 | 0 | 0 |
| Solar Panel 10 watt w/battery charger | 0 | 0 | 0 | 0 |

| SYSTEMS (CONT.) | 30W | 32V | 34D | 36M |
|---|-----|-----|-----|-----|
| Water Heater 6-gallon electronic ignition, 120 vac/LP gas w/Motoraid & auto heater | 0 | 0 | 0 | 0 |
| Washer/Dryer Combination | | 0 | 0 | |
| Washer/Dryer Prep | | | S | S |

| SLIDEOUT | 30W | 32V | 34D | 36M |
|--|-----|-----|-----|-----|
| Slideout Room bed | | S | S | S |
| Slideout Room couch/dinette, w/slideroom cover, STOREMORE ® | | S | S | S |
| Slideout Room dinette/galley, w/slideroom cover, STOREMORE ® | S | | | |

| SAFETY | 30W | 32V | 34D | 36M |
|---|-----|-----|-----|-----|
| Assist Bar interior, Assist Handle exterior, acrylic w/logo, Bumpers front & rear, Detectors/Alarms LP leak, smoke, carbon monoxide, Fire Extinguisher 10 B.C., Ground Fault Interrupter , Light center high-mount brake lamp, Light courtesy w/wall switch, Lights* daytime running lamps, Window escape, Windshield laminated safety glass | S | S | S | S |

| WARRANTY | 30W | 32V | 34D | 36M |
|--|-----|-----|-----|-----|
| 12-month/15,000-mile basic limited warranty , 36-month/36,000-mile warranty on structure,** 10-year limited parts & labor warranty on roof skin | S | S | S | S |

- The height of each model is based on the curb weight of a typically equipped unit on the standard chassis. The actual height of your vehicle may vary by as much as 2" depending on chassis or equipment variations.
- ^ Sunrise floorplans feature a wide-body design — over 96". In making your purchase decision, you should be aware that some states restrict access on some or all state roads to 96" in body width. Before making your purchase decision, you should confirm the road usage laws in the states of interest to you.
- * Not all items available in combination. See dealer for details.
- ◇ Capacities shown are tank manufacturer's listed water capacity (W.C.). Actual filled LP capacity is 80% of listing due to overfilling prevention device on tank.
- ∞ Measurements are based on the most recent information available. See your dealer for specifications.
- § Your motor home's load capacity is designated by weight, not by volume, so you cannot necessarily use all available space when loading your motor home.
- S Standard
- O Optional
- + Actual towing capacity is dependent on your particular loading and towing circumstances which includes the GVWR, GAWR and GCWR as well as adequate trailer brakes. Please refer to your vehicle's operator's manual for further towing information.
- Ford® Standard ⊕ Ford® Optional
- ** See your dealer for complete warranty documentation information.

Winnebago Industries® continuing program of product improvement makes specifications, equipment, model availability and prices subject to change without notice. Comparisons to other motor homes are based on the most recent information available.

Not all motor homes are created equal. Take a closer look and you'll see there is much more to an Itasca Sunrise than a long list of standard features and compelling floorplans. Beneath it all, you'll find a SuperStructure foundation of strength and durability.

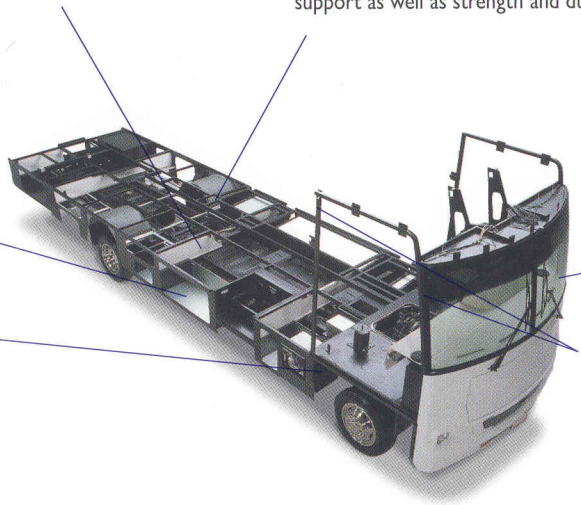


SuperStructure is the term given to Winnebago Industries' structural motor home design and construction. Rather than a single component, it is the culmination of design integration that incorporates steel and aluminum substructures, composite-design laminated floor risers, interlocking joint technology and Thermo-Panel® floor, roof and sidewalls to form an incredibly strong, durable vehicle body.

LAMINATED RISERS feature a welded aluminum core for superior strength and provide a stable base for the floor structure and storage compartments.

STORAGE COMPARTMENTS attach to outrigger assemblies so that the weight of stowed items is carried and dispersed throughout the foundation substructure.

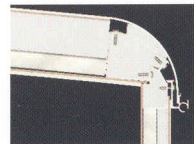
CRITICAL STEEL COMPONENTS are treated using an advanced electrodeposition coating process that provides superior corrosion protection.



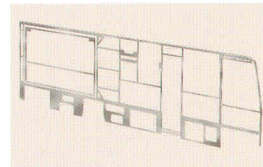
THE FOUNDATION SUBSTRUCTURE assembly is precision-aligned to maximize longitudinal and cross-coach support as well as strength and durability.

WINDSHIELDS are mounted in steel with non-hardening sealants for superior strength, safety and durability. Some manufacturers actually use a rubber gasket to hold the windshields to a fiberglass cap.

THE ALL STEEL CAB features integral A and B pillars for added strength and stability.



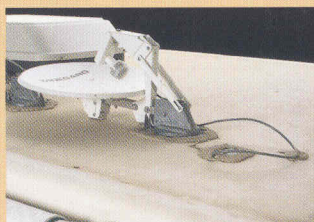
INTERLOCKING JOINT CONSTRUCTION utilizes advanced aluminum structural components to create integrated floor-to-sidewall and sidewall-to-roof joints. This design effectively distributes the weight of the walls and roof, making a stronger and more durable body than competitor designs which rely on screws to carry the weight.



WE INVENTED THERMO-PANEL SIDEWALL CONSTRUCTION and over the years have perfected this innovative composite construction process. It combines an exterior fiberglass panel, high-density block foam insulation and welded aluminum support structures to create some of the strongest, most durable and lightweight sidewalls in the industry.



1-YEAR OLD ITASCA FIBERGLASS ROOF



1-YEAR OLD COMPETITOR'S RUBBER ROOF

BUILT TO A HIGHER STANDARD. The Sunrise features a crowned, one-piece fiberglass roof backed with a 10-year limited parts and labor roof skin warranty. Fiberglass offers superior strength, attractiveness and durability over the rubber roofs found on many competitive models which can chalk, streak and degrade over time. Fiberglass also provides increased puncture and tear resistance.

COMMITTED TO SERVICE. We back our motor homes with the best service after the sale in the industry.



TRIP Saver
FAST TRACK PARTS

- 12-month/15,000-mile basic limited warranty
- 36-month/36,000-mile warranty on structure
- Standard 10-year limited parts and labor roof skin warranty
- Complimentary 24-hour roadside assistance program
- TripSaver Fast Track Parts. TripSaver guarantees that in-stock warranty parts ship directly to your dealer within 24 hours.
- National dealer service network



RECOGNIZED QUALITY. Recreation Vehicle Dealer Association members annually rate RV manufacturers on the quality of their products, and sales and service support. Winnebago Industries has achieved the coveted Quality Circle award every year since its inception, the only major motor home manufacturer to do so.



ALL MOTOR HOMES ARE NOT CREATED EQUAL. Learn more about what sets Winnebago Industries apart. Ask your dealer for this guide. It will help you learn what makes Winnebago Industries motor homes distinctly superior to other brands.

WARNING: JOINING WIT HAS BEEN KNOWN TO CAUSE EXCESSIVE FUN.

Winnebago-Itasca Travelers (WIT) is a club for owners of Winnebago Industries motor homes. WIT is a great way to meet people and offers you:



- Caravans and rallies
- Local and state group activities
- RV travel benefits

winnebagoind.com

For Sales and Service Information Contact:



©2002 Winnebago Industries, Inc.



Printed in USA

Seat belts are your most important hookup. Always buckle up.