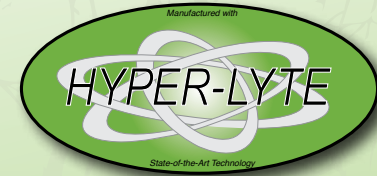


# Wildwood

by FOREST RIVER

# X Lite



Hyper-Lyte™: Noun—the fusion of innovative design and State-of-the-Art manufacturing processes, coupled with ground breaking components that deliver an exceptional lightweight RV at an unbeatable value.

## GO WILD.



Expandables

Toyhaulers

Fifth Wheels



## GO LITE.

LIGHT'S JUST NOT GOOD ENOUGH WHEN THERE'S X-LITE!

Wildwood  
X Lite



The Wildwood X-Lite Series offers you both traditional travel trailer and fifth wheel layouts and convenient expandable floorplans. Each model is filled with all the comforts of home to ensure a pleasant stay at your favorite camping destinations.



26BH shown with Tan Interior





17EXP shown with Optional Upgraded Onyx Interior

The 17EXL model features two expandable tent areas, even though you are towing a smaller trailer when you add up the square feet you get a great value.  
(Bottom Right) The kitchen of the 17EXL model features a 60/40 sink with a pull out sprayer faucet, three burner cook-top, built in knife rack, and plenty of storage.





# Toyhaulers



New for this model year are the Wildwood X-Lite Toyhaulers. These are unlike any other Toyhaulers. Not only are they lightweight and easy to tow, but they can fit into tight spaces taking you off of the beaten path and to your next adventure. The innovative design features an optional TV that can be placed either inside or outside of the unit and viewed from many angles. Let the X-Lite Toyhauler take you and your toys to the action. Great for hunting, fishing, off road vehicles, bikes and good old fashioned fun. This value driven toyhauler gives you everything you need at a great price. Available in the 18 XL (Shown) or the 22 XL.



## BACK-PACK EDITION

### Option Package

The X-Lite Backpack Edition option gives you plenty of exterior storage, and folds up and out of the way when it's not in use.



**Back Pack Edition Option Package Includes:** Bedsprad, (N/A 17 EX), Flip Down Rear Cargo Hauler (N/A 14 FD or Toyhauler Models), 13.5 A/C (non-ducted), Awning, Microwave, and Exterior Speakers.



# FEATURES/OPTIONS

The X-Lite's skid bar TOY Lock combination keeps your toys safe and the back end of your unit from being damaged from scrapes and bumps.



TOY LOCK  
SKID BAR

The X-Lite has a radius entry door.



ZX-25 AM/FM Radio with CD/DVD player and MP3 docking capability.



The X-Lite has a bunk that is rated at OVER 300 Lbs.



300 LBS.

The X-Lite has a stamped frame that is 30% lighter than a conventional frame and just as strong.

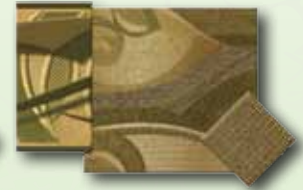


## DECOR OPTIONS

### COFFEE



### MOSS



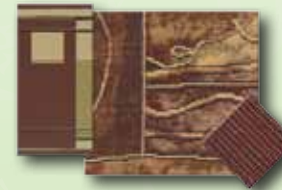
The X-Lite has a single lever sink faucet with built in retractable sprayer head.



The X-Lite's nitrogen filled tires provides a smoother ride, extends tire life and improves fuel economy.



### WINE



### TAN



The X-Lite has a self edged countertop for long lasting durability.



The X-Lite's jalousie windows open out to keep the elements where they belong - outside of your unit.



### ONYX Upgrade



2-Tone Fabric with leather accents, Grey/Silver square floor tile, Black countertops, 2-Tone cabinetry, Special Grey/Silver wall border.

The X-Lite's PVC BEAU-Floor® is extremely durable in all climates and has an excellent warranty.



A Silverware drawer on ball bearing drawer guides with full extension will keep your silverware organized and easy to access.

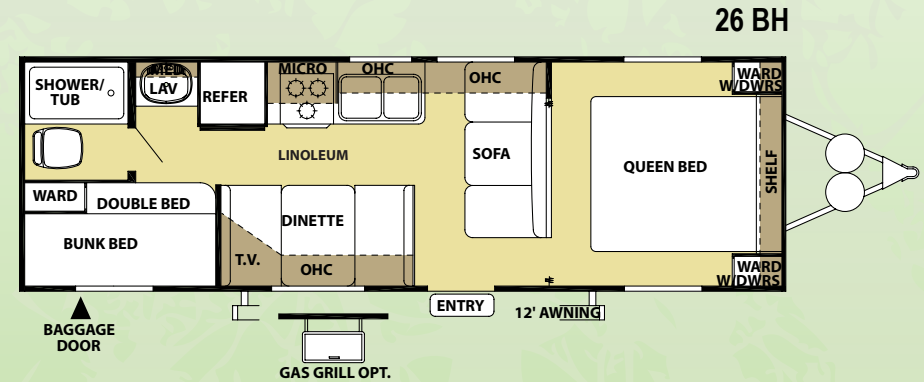
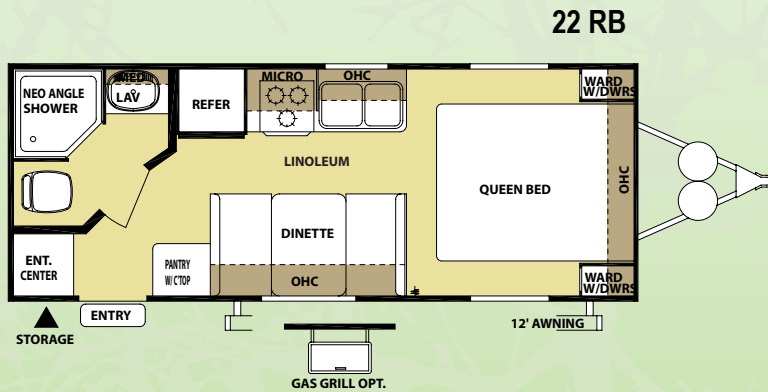
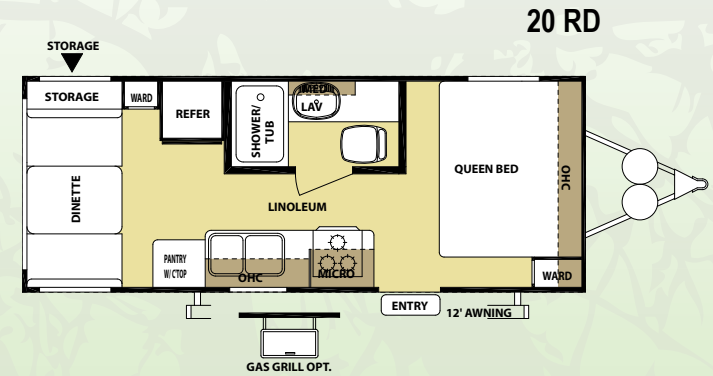
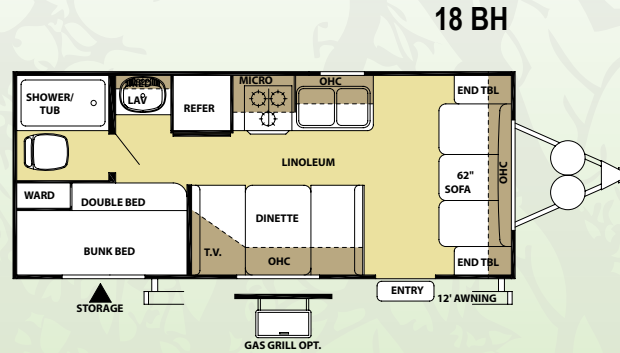
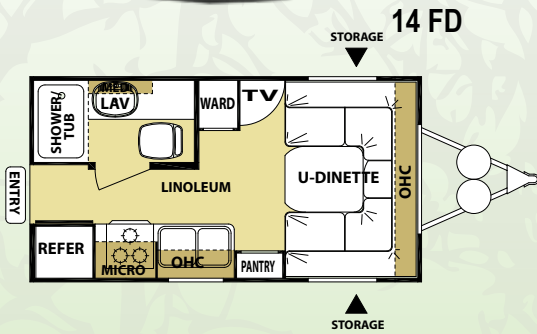






# FLOOR PLANS

## X-Trail TRAVEL TRAILER FLOOR PLANS



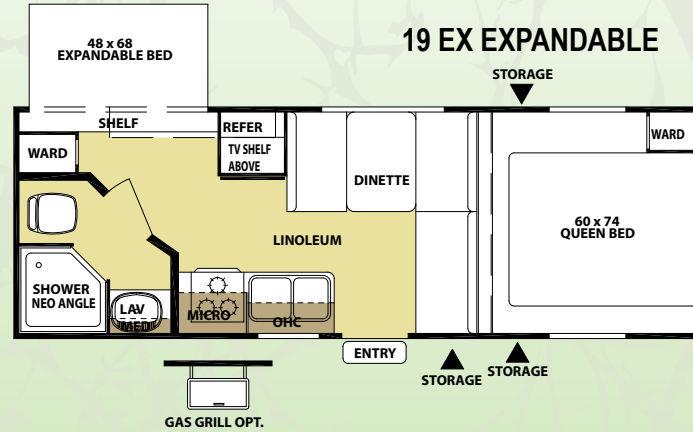
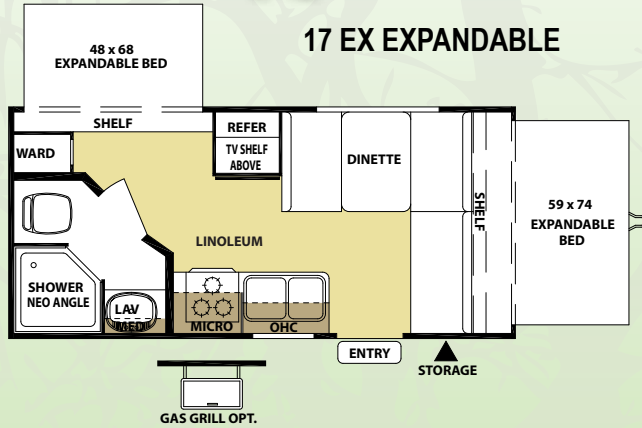
|                     | TRAVEL TRAILERS |       |        |       |       | EXPANDABLES |       | TOYHAULERS |         |
|---------------------|-----------------|-------|--------|-------|-------|-------------|-------|------------|---------|
| MODEL NUMBER        | 14FD            | 18BH  | 20RD   | 22RB  | 26BH  | 17EX        | 19EX  | 18XLSRV    | 22XLSRV |
| UNIT LENGTH W/HITCH | 17'6"           | 22'4" | 22'7"  | 23'   | 27'8" | 19'6"       | 25'   | 18'11"     | 26'4"   |
| SHIPPING WEIGHT     | 2880            | 3405  | 3762   | 3615  | 4050  | 2940        | 4391  | 3548       | 4995    |
| HITCH WEIGHT        | 241             | 253   | 483    | 310   | 407   | 309         | 1041  | 761        | 1194    |
| AXLE WEIGHT         | 2609            | 3152  | 3279   | 3346  | 3643  | 2631        | 3351  | 2787       | 4002    |
| GVWR                | 3700            | 4500  | 5400   | 5400  | 5400  | 3800        | 8041  | 7761       | 8194    |
| GAWR FRONT          | 3500            | 3500  | 3500   | 3500  | 3500  | 3500        | 3500  | 3500       | 5080    |
| CCC                 | 820             | 1095  | 1638   | 1785  | 1350  | 822         | 3612  | 3400       | 2998    |
| EXTERIOR HEIGHT     | 9'10"           | 9'10" | 10' 2" | 9'10" | 9'10" | 9'10"       | 10'0" | 10'0"      | 10'1"   |
| FRESH WATER (Gal.)  | 33              | 33    | 33     | 33    | 41    | 33          | 33    | 42         | 42      |
| GRAY WATER (Gal.)   | 32              | 35    | 35     | 35    | 35    | 32          | 32    | 32         | 32      |
| BLACK WATER (Gal.)  | 35              | 32    | 32     | 32    | 32    | 35          | 32    | 28         | 32      |
| AWNING (Optional)   | 10'             | 12'   | 12'    | 12'   | 12'   | 12'         | 12'   | 13'        | 16'     |



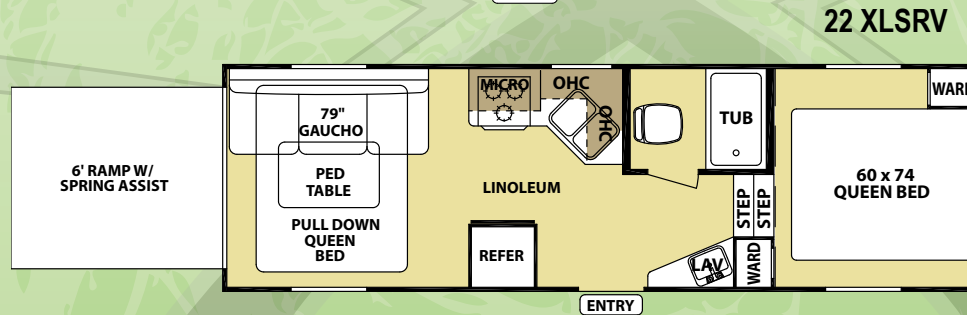
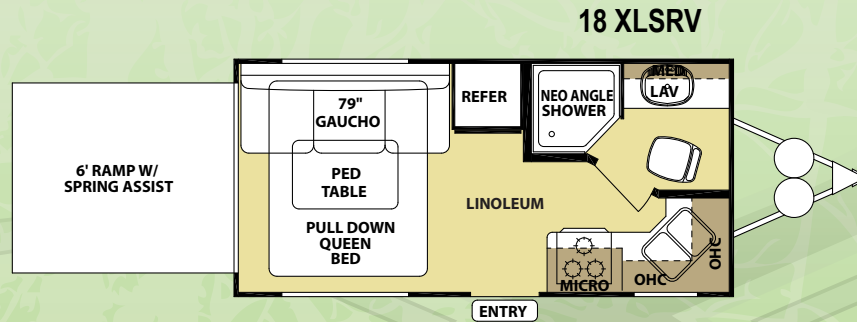
- X-TREMELY COMFORTABLE
- X-TREMELY EASY TO TOW
- X-TREMELY FUEL EFFICIENT
- X-TREMELY LIGHTWEIGHT
- X-TREMELY AFFORDABLE



## EXPANDABLE FLOOR PLANS



## TOYHAULER FLOOR PLANS



### Standard Features:

- Diamond Plate Rock Guard
- 3 Burner Cook Top
- TV Antenna w/ Booster
- Radio w/CD Player
- A/C Prep. (Pre-Wired)
- 20# LP Bottles w/Hard Cover
- Microwave Prep
- Water Heater By-Pass
- Mini-Blinds
- Wall Boarder (Kitchen)
- Single Door Refrigerator
- Ball Bearing Drawer Guides
- BEAU-Floor® PVC Flooring
- 6 Gal. Gas Auto Reignite Water Heater

### Popular options:

- Bedspread for Main Bed
- Cable TV
- Skylight Over Tub
- Full Wall with Slider Door (26BH Only)
- Double Door Refer IPO Single Door
- 6 Gal. Gas/Elec. DSI Water Heater
- Stabilizer Jacks TT&FW
- RVQ Grill (Most Models)
- 2 Exterior Speakers
- 13.5 AC (non-ducted)
- Microwave Oven
- Range with Oven IPO Cook Top
- Awning
- Aluminum Rims (black and chrome)
- Spare Tire & Carrier
- Flip Down Rear Storage Rack (N/A 14FD or SRV Models)
- Z240 (Canadian Unit)

### Backpack Edition Option Package:

- Bedspread (N/A 17 EX)
- Flip Down Rear Cargo Hauler (N/A 14 FD or SRV Models)
- 13.5 A/C (Non-Ducted)
- Awning
- Microwave
- Exterior Speakers



# PRE-DELIVERY INSPECTION FACILITIES



THAT'S 20,000 SQUARE FEET OF QUALITY ASSURANCE.

THE BARE ESSENTIALS FOR A PREMIUM PRODUCT.

Brought online in 2005, Forest River is proud of its state-of-the-art test facility. This beautiful building blends many of the old tried and true methods of testing our diverse types of RVs with new innovative ways of solving quality issues. Being centrally located to most Forest River manufacturing facilities, this 20,000 square foot PDI (Pre-delivery Inspection) test building gives immediate daily feedback to individual managers. This assures the production facilities that nothing has slipped by the plant's quality assurance personnel and the units are "green" and ready to ship.



**Wildwood X-Lite-so Light it can be towed with a Minivan!**



Forest River, Inc.  
914 C.R. 1  
Elkhart, IN 46514  
(574) 533-5934  
[www.forestriverinc.com](http://www.forestriverinc.com)  
[www.forestriveraccessories.com](http://www.forestriveraccessories.com)

All specifications contained herein are based on the latest product information at time of printing. Forest River reserves the right to make changes in colors, materials, equipment and specifications at any time without notice and assumes no responsibility for any errors in this brochure. PIP 041808

## Forest River Encourages You to Buy Locally

Forest River, Inc. strongly encourages our retail customers to purchase from their local dealership whenever possible due to the following factors:

- Our Dealers are as a rule, independently owned and operated businesses. Outside of those customers they personally sold products to, they are not contractually obligated to perform warranty service on Forest River products that were purchased elsewhere. There may be an occasion that you would be required to return to the point of purchase to satisfy warranty requirements.
- Although many dealerships will eventually service products not purchased at their place of business, they will usually take care of their customers and other Forest River customers who are traveling away from their local dealer as they would their own.
- Local purchases allow a customer to establish a relationship with a dealer close to home. This relationship provides the customer with a convenient location for service and support from a "home town" professional.
- The opportunity for a thorough PDI (Pre Delivery Inspection) and product orientation is an additional benefit of buying from your local dealer. Further providing the opportunity for refresher courses or the ability to get questions answered much more conveniently.
- For our Canadian customers, there are also requirements which must be met to bring an RV purchased out of the country to their home. Although not insurmountable, these requirements may involve such things as additional inspections and certifications, taxes and fees. Your local Canadian Dealer is a professional at meeting these requirements.

Forest River's goal is for all RV Owners to fully enjoy their RV experience. In light of this goal, and considering the advantages of buying local, we encourage you to be thorough when determining what product to purchase and which dealer to purchase it from as both are key to your ultimate satisfaction and the realization of your dreams.

## PEACE OF MIND.

Forest River has yet another exclusive feature to offer: One year of free roadside assistance will be given to every new Wildwood X-Lite customer. This is just one more way to say "Thank you" and to ensure an enjoyable traveling experience.



YOUR  DEALER

