

Sandpiper

travel trailers • fifth wheels • park trailers



MADE IN THE U.S.A.

Travel Anywhere.





Sandpiper

323FK SHOWN WITH SATIN INTERIOR



323FK MASTER SUITE



SANDPIPER TRAVEL TRAILERS

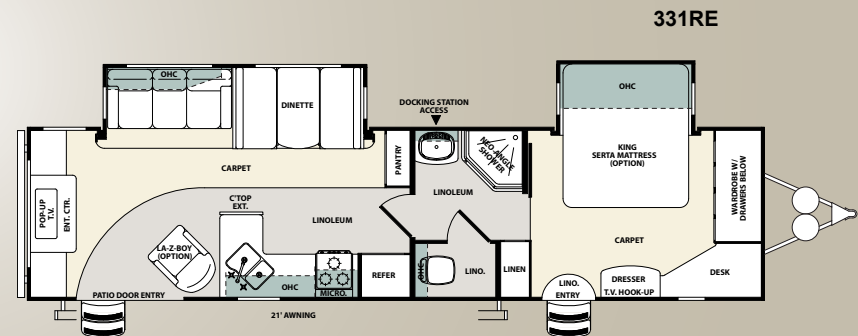
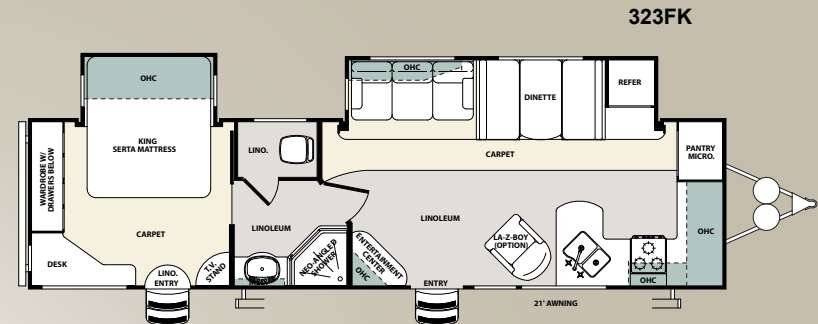
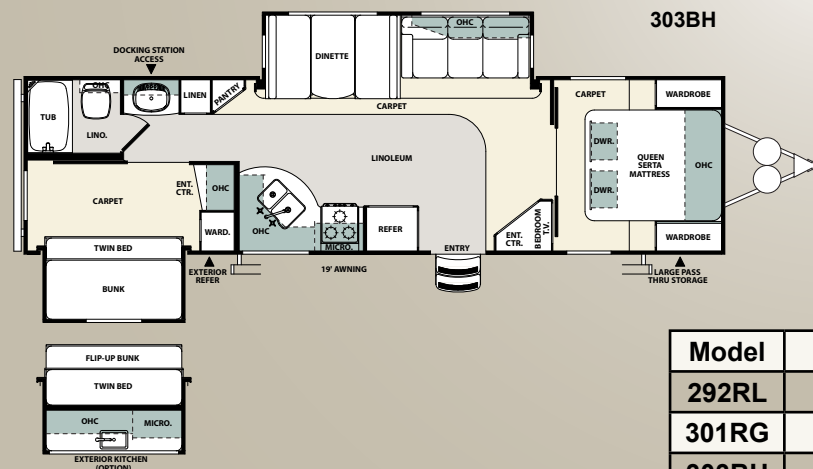
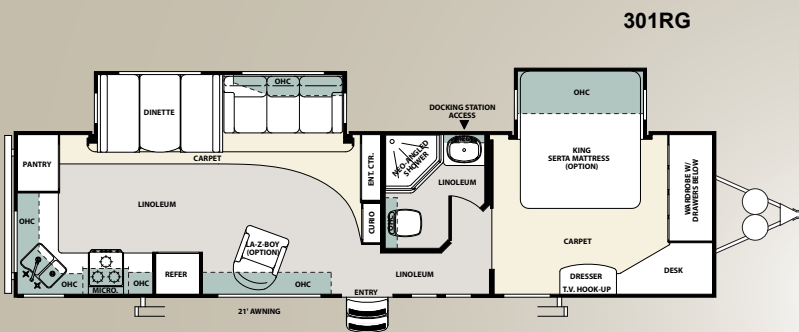
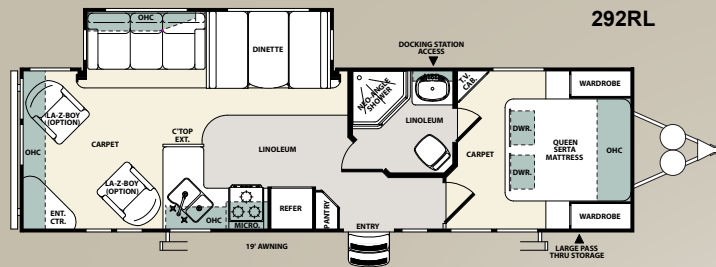
The Sandpiper travel trailer series are the most innovative travel trailers on the market. With numerous functional and livable floorplans to choose from you are sure to find one that suits your needs. Sandpiper travel trailers are packed with great features, and designed with contemporary styling. These travel trailers will provide you and your family many years of dependable service and great times.

EXTERIOR KITCHEN



OPTION AVAILABLE ON THE 303BH, 391QB, AND 355QBQ

SANDPIPER TRAVEL TRAILER FLOORPLANS AND SPECIFICATIONS



Model	Hitch	Ship	GVWR	Length	Height	Awning	Gray	Black	Fresh
292RL	736	7,125	11,136	32' 7"	11'6"	19'	108	54	52
301RG	1,139	8,955	11,299	37' 7"	11'6"	21'	108	54	54
303BH	938	8,194	11,338	34' 10"	11'6"	19'	88.5	32	54
323FK	817	8,660	11,217	35' 11"	11'6"	19'	108	54	54
331RE	1,341	9,531	11,501	38' 8"	11'9"	21'	108	54	54



Sandpiper

361FL SHOWN WITH SATIN INTERIOR



SANDPIPER PARK TRAILERS

They say that half the fun is getting there, but when you are staying in a Sandpiper park trailer the destination is where its at. Designed for lengthy destination stays the floorplans and amenities of the Sandpiper park trailer is as close to home as you can get. Great features like our optional exterior kitchen and comfortable interiors make sure that each trip is the best it can be.





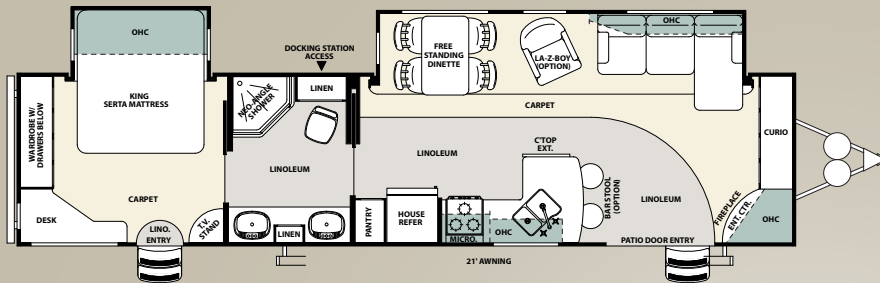
Sandpiper

361FL MASTER SUITE

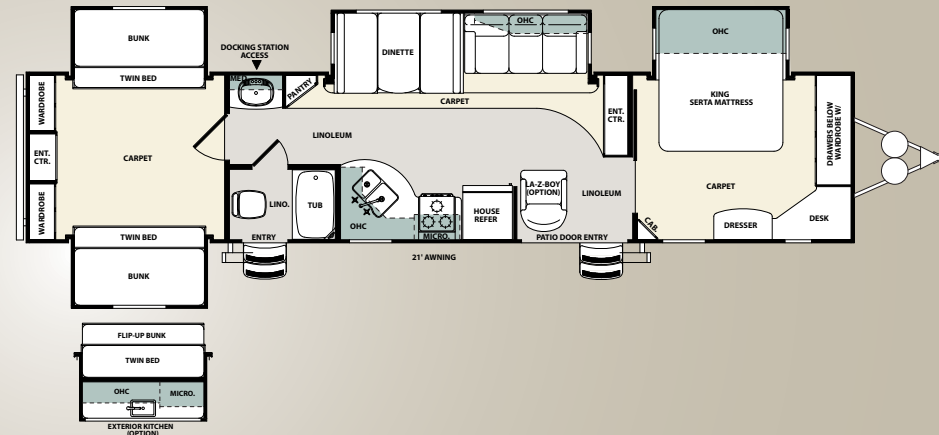
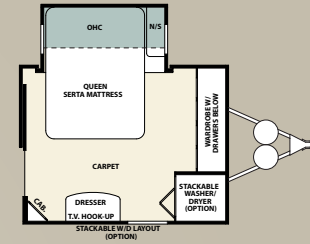


SANDPIPER PARK TRAILER FLOORPLANS AND SPECIFICATIONS

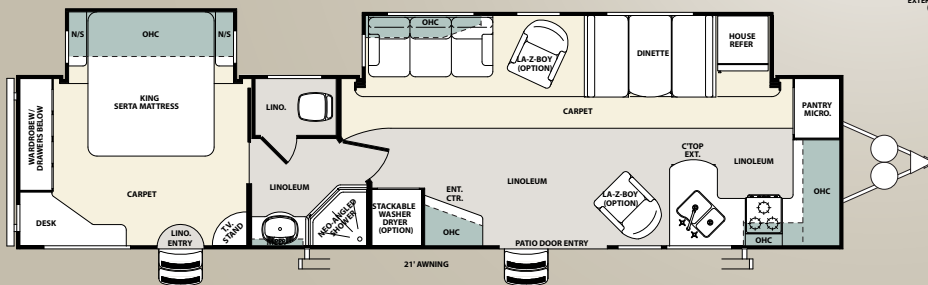
361FL



391QB



403FK



Model	Hitch	Ship	GVWR	Length	Height	Awning	Gray	Black	Fresh
361FL	1,273	9,816	13,273	37' 4"	11' 9"	21'	108	54	54
391QB	1,334	10,569	13,334	42' 0"	11' 9"	21'	54	54	54
403FK	1,506	9,736	13,506	41' 3"	11' 9"	21'	108	54	54



Sandpiper

356RL SHOWN WITH BRASS INTERIOR

FOREST RIVER
EXCLUSIVE

FOREST RIVER IS PROUD
TO FEATURE THESE QUALITY
BRANDS. YOU WILL NOT SEE
THESE PRODUCTS OFFERED BY
ANY OF OUR COMPETITORS.

LA BOY

Serta

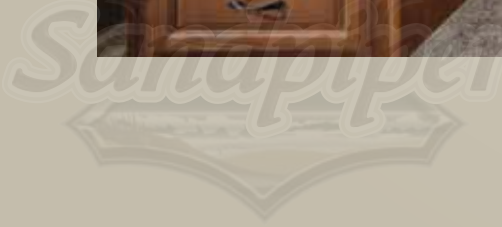


SANDPIPER FIFTH WHEELS

Sandpiper fifth wheels set the industry standard for features, comfort and quality. When you step inside of one of our fifth wheels you will sense our dedication to our loyal customers. Our commitment shows through and through from our professionally designed interiors to our handcrafted slideout fascia, with Sandpiper there is no compromise with quality or craftsmanship.



355QBQ SHOWN WITH TOFFEE INTERIOR





Sandpiper

355QBQ BUNK AREA (350 LB. BUNK RATING)



SANDPIPER TREE HOUSE



The "Tree House" loft is a great place for the kids to have fun.



The second bedroom has a ladder that gives the kids easy access to the loft area.



The "Tree House" floorplan is excellent for entertaining kids and adults alike.



"Toy box" floor storage feature.



The hatch feature is a fun way to reach the loft.



The master suite is large and has tons of storage.

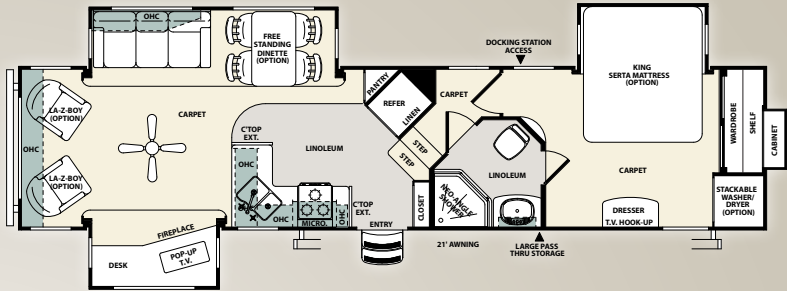


Fun "Tree House " features include the peepholes and mail slot.

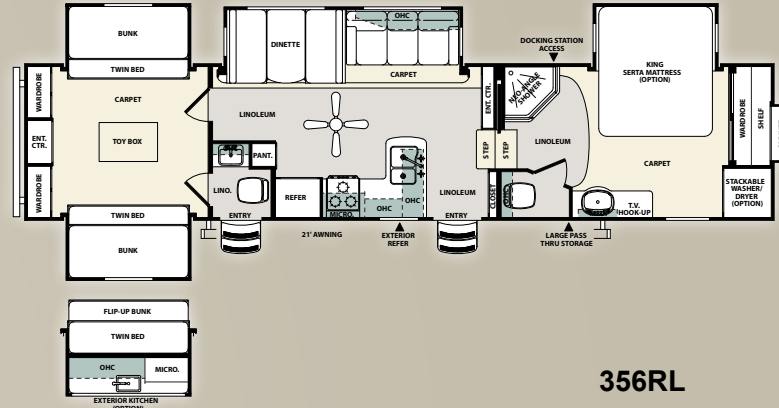
New for the 2010 Model year Sandpiper introduces the first truly kid friendly floorplan. The innovative 35LOFT or "Tree House", has a special area outfitted to entertain the kids. The second bedroom acts as an entertainment area with it's own half bath and the cleverly designed "toy box" in floor storage feature. From there a ladder transports the kids up to their own loft play/sleeping area. In the "Tree House" area you will find fun features for the kids such as peepholes, colored LED fun lights, and large skylights that make for excellent stargazing. The kids will be endlessly entertained in this great floorplan. While we were thinking about the kids we definitely did not forget about the adults. The 35LOFT floorplan comes equipped with a great entertainment center with LCD/HD TV, AM/FM Stereo ,CD, DVD Player. This combined with a kitchen that has abundant storage and all the amenities of home and you will see that the 35LOFT has everything in you need to enjoy your time on the road. The standard u-shaped dinette comes with a queen size air mattress and stow away tables and chairs for playing games or dining.

SANDPIPER FIFTH WHEEL FLOORPLANS AND SPECIFICATIONS CONTINUED

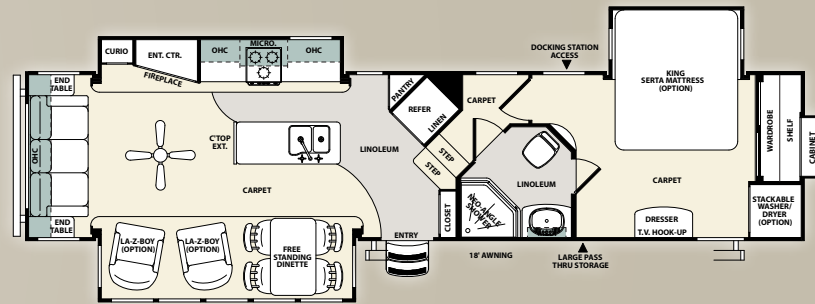
346RLG



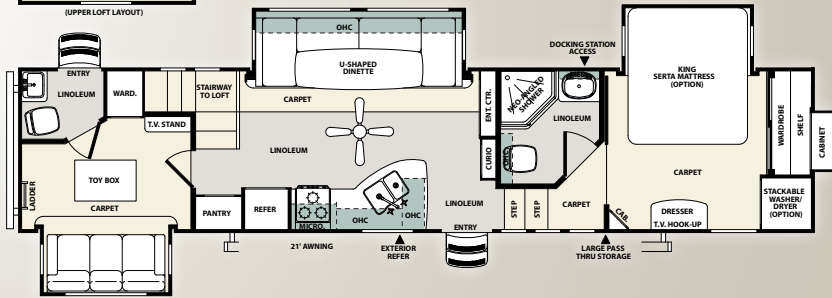
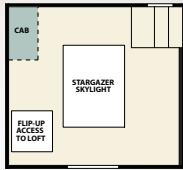
355QBQ



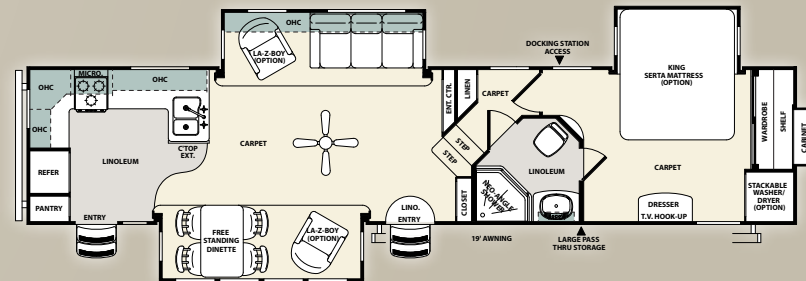
356RL



35LOFT



365RG



SPECIFICATIONS

Model	Hitch	Ship	GVWR	Length	Height	Awning	Gray	Black	Fresh
346RLG	2,017	10,665	14,017	39' 1"	12'9.5"	21'	108	54	54
355QBQ	1,923	11,185	13,923	39' 3"	13'0"	21'	108	108	54
35LOFT	2256	10,996	14,256	41' 0"	13'0"	21'	108	108	54
356RL	2,154	10,876	14,154	39' 4"	12'10"	18'	108	54	54
365RG	2,305	10,959	14,305	40' 9"	12' 9.5"	18'	108	54	54

SANDPIPER INTERIOR FEATURES



Optional stackable washer/dryer.
(available per floorplan)



The u-dinette sofa features a queen size air hide-a-bed sofa that inflates and deflates quickly and easily for easy set up and storage.



Serta™ Dreamscape mattress, a Forest River exclusive feature.



Handcrafted slideout fascia.



Contemporary ceiling fan with light kit.



Porcelain foot flush toilet, easy to use, easy to clean.



Residential style under mount sink with pull out sprayer faucet.



Amber threshold lighting at main entrance for added safety.



La-Z-Boy™ rocker recliners a Forest River exclusive.



Ball bearing, full extension drawer guides for trouble free service.

SANDPIPER EXTERIOR FEATURES



Gel coat fiberglass protects from UV rays and prevents yellowing and cracking.



Drip rail with extra long drip spouts that help prevent black streaking.



2 quick connect spray ports (one on each side) are great for easy clean up.



Sandpiper's "ICEBOX" is a quick and easy way to grab a cold snack and beverage without entering your unit.



110v outlet and cable outlet conveniently located in the pass thru storage area.



Flush mount exterior speakers for your listening pleasure.



Heated and enclosed underbelly-protects your coach and improved airflow allows for a sturdier ride.



Sandpiper's command center allows you to monitor tanks and other systems quickly and easily.



Wide stance power front jacks with quick release snap pins.



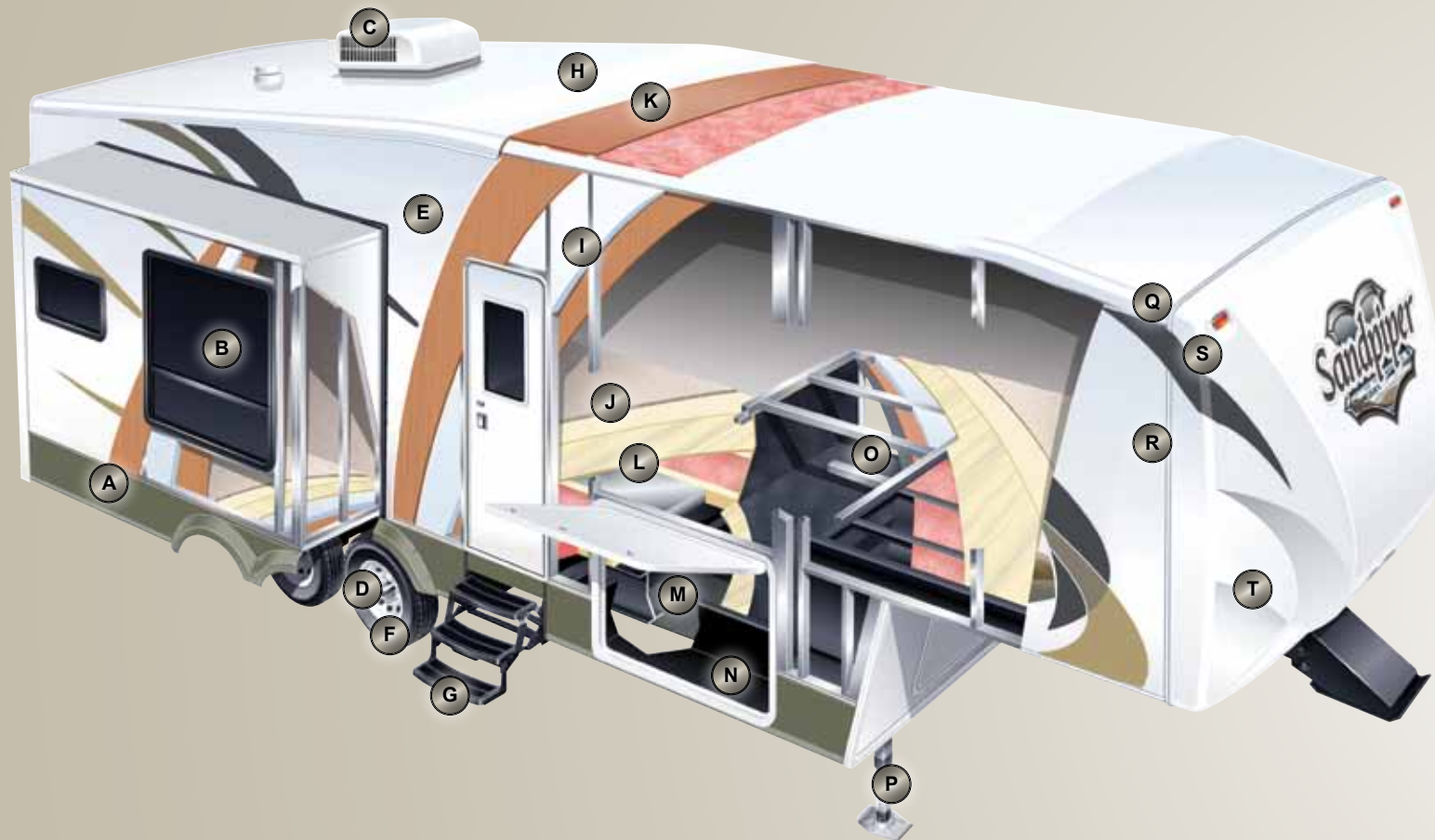
Contemporary aluminum rims with E-rated radial tires. (per floorplan)



Optional under mount exterior storage bin, keep commonly used items close at hand.



Lighted docking station is conveniently located in the large pass-thru storage area.



SANDPIPER CONSTRUCTION FEATURES

- | | |
|--|---|
| <p>A. ROLLED ALUMINUM SIDED SKIRTING</p> <p>B. TINTED WINDOWS</p> <p>C. DUCTED 15K BTU AIR CONDITIONING</p> <p>D. E-ZLUBE DEXTER AXLES</p> <p>E. LAMINATED VACUUM BONDED ALUMINUM SIDEWALLS</p> <p>F. RADIAL TIRES</p> <p>G. HICKORY SPRINGS™ RADIUS ENTRY STEPS</p> <p>H. SEAMLESS RUBBER ROOF (12 YR. WARRANTY)</p> <p>I. BLOCK FOAM INSULATION</p> <p>J. 28 oz. CARPET W/ PADDING</p> | <p>K. 3/8" ROOF DECKING (FULL WALK-ON ROOF)</p> <p>L. 5/8" TONGUE AND GROOVE FLOORING</p> <p>M. ENCLOSED UNDERBELLY W/ RADIANT HEAT</p> <p>N. 10" I-BEAM POWDER-COATED FRAME W/ RUST INHIBITOR</p> <p>O. ALUMINUM LAMINATED BATH DECK</p> <p>P. POWER FRONT JACKS WITH QUICK RELEASE SNAP PINS</p> <p>Q. MOTORIZED RADIUS ROOF</p> <p>R. HIGH GLOSS GEL-COAT FIBERGLASS EXTERIOR</p> <p>S. FRONT GEL-COAT FIBERGLASS CAP (STANDARD)</p> <p>T. IMPROVED FRONT CAP FOR SHARPER TURNING RADIUS</p> |
|--|---|

EXTERIOR FEATURES

- Gel Coat Fiberglass
- New Aerodynamic Fiberglass Front cap with improved turning radius
- Enclosed and heated Dump valves
- Large Tinted windows with 80/20 UV Prohibitor
- E-Z LUBE Dexter Axles
- Dexter Nev-R-Adjust™ Brakes
- Hickory Springs™ Radius Triple steps w/9" riser (no pinched fingers)
- Dometic™ "One-Touch" Electric Awning w/ adjustable arms
- Power front jacks with spring loaded snap pins (5ths)
- 16" Radial tires-E Rated (5ths)
- Automotive-style fender skirts
- Hitch Light
- Exterior Refrigerator (per floorplan)
- Porch Light w/Interior Switch
- Lighted Threshold at Entry Door
- Patio Recreation Light with Interior Switch
- 30 lb. Double LP tanks w/Auto Change Over
- Roof ladder (Std. on 5ths)
- Black Tank Flush
- 2 Exterior Speakers
- Rain Gutters With Extra Long Drip Spouts (Prevents Black Streaking)
- Insulated Heavy Duty Lockable Baggage Doors
- Exterior Foldable Grab Handle
- Unobstructed Pass-Through Storage Area with Cable Jacks and 110V outlet (5ths)
- 2 Spray Ports with 25' hose (one on each side)
- Docking Station: Easy Winterization, Hot and Cold Spray Port, Black Tank Flush, Pull Valves for Tanks

INTERIOR FEATURES

- 84" Interior Height w/ 6'4" Slide Heights (5ths Only)
- Four color coordinated interiors (Olive, Satin, Toffee, Brass)
- Full Extension Ball bearing drawer glides
- Stone Cast Under Mounted Kitchen Sink
- Handmade Cabinetry with Screwed Lumber Core Stile Construction
- Handcrafted Main Slideout Fascia

- Self Edged Residential Countertops
- Extra Large Picture Windows Throughout
- Vented Side Windows in Slideouts
- TV Antenna w/Booster
- Surround Sound TV Hook-up
- Solid Oak Drawer Fronts w/Pine sides
- Raised Panel Cabinet Doors (uppers and lowers)
- Bedroom Slideout Fascia
- Neo Angle Shower w/Glass Door (where available)
- Designer Window treatment accented per Decor
- Overhead Cabinet in Slideout
- Residential Black panel Refer Door Insert
- Ceiling Fan w/Lighting Kit (5ths)
- Kitchen Faucet with Pull Out Sprayer
- 2 Decorative Throw Pillows on Sofa
- Upgraded Decorative lighting throughout
- King Bed (where available)
- Hide-A-Bed Sofa w/ Air Mattress
- 28 oz. carpeting
- Center mounted A/C Unit for Even Cooling
- Quilted Bedspread
- Shower Surround with Etched Tile Pattern
- Wrought Iron Package: Headboard, Spice Rack, Picture, Clock
- Trash Receptacle in Kitchen

APPLIANCES/SYSTEMS

- Ducted Dometic® 15K A/C with Quick Cool (5ths)
- Sandpiper Command Center
- Floor Ducted 35,000 BTU Furnace
- Three Burner High Output Range w/ 22" oven
- 8 Cubic Ft. Double Door Refrigerator
- Interior Monitor Panel for Holding Tanks
- Interior Thermostat for Heating and Cooling
- Flush Floor Hydraulic Slideouts (per floorplan)
- Satellite and Cable Hookup with RG-6 cable for high quality picture
- Porcelain Foot Flush Toilets
- Full Coach Water Filtration System
- 10 Gal. DSI Water Heater

CONSTRUCTION

- Welded Aluminum-framed, Vacuum Bonded Laminated Superstructure
- 2" x 3" floor joists 12" on center
- 5/8" tongue & groove plywood floor decking
- 3/8" roof decking (full walk-on roof)
- Cambered Powder Coated frame with Rust Prohibitor
- Fully Enclosed underbelly, insulated with radiant heat.
- 5" truss roof rafters
- R-10 sidewall construction
- Laminated and Fully Insulated Bathroom Floor Deck (5ths)

POPULAR OPTIONS

- La-Z-Boy Recliner IPO Swivel Rocker
- King Bed (Where Available)
- Free-standing dinette with 4 chairs
- Stackable Washer/Dryer prep
- Stackable Washer and Dryer (per floorplan)
- Sofa IPO Bottom Bunk (per floorplan)
- Aluminum wheels (Travel Trailers)
- Second Air Conditioner-Bedroom
- Serta® Dreamscape Euro-top Mattress
- Fantastic fan with Power Hood Operated with Wall Switch
- Slide Room Awnings
- 12 Volt Heated Holding tanks
- Equaflex™ Equalizer System
- All Weather Exterior Kitchen
- Under Mount Storage Box
- U-Shaped Dinette
- Solid Surface Countertops (5ths Only)

FOR YOUR SAFETY

- Smoke Alarm
- Fire extinguisher
- Breakaway switch (Battery hook-up required)
- Dead-bolt lock on entry door
- Liquid Propane (LP) Gas detector
- Fire escape windows

Sandpiper Signature Package

- High Gloss Gel Coat Fiberglass
- Serta® "Dreamscape" Mattress
- Wrought Iron Package
- Flat Screen LCD/HD TV (sizes vary per floorplan)
- AM/FM CD/DVD Player w/M/P3 Capabilities
- Home Theater Surround Sound System
- Water Filter System
- Fantastic Fan in Bath
- CO₂ Detector
- Wire and Brace for 2nd A/C (5ths)
- 50 Amp Service (5ths)
- 10 Gal. DSI Water Heater
- Upgraded Rims

FOREST RIVER ENCOURAGES YOU TO BUY LOCALLY

Forest River, Inc. strongly encourages our retail customers to purchase from their local dealership whenever possible due to the following factors:

- Our dealers are as a rule, independently owned and operated businesses. Outside of those customers they personally sold products to, they are not contractually obligated to perform warranty service on Forest River products that were purchased elsewhere. There may be an occasion that you would be required to return to the point of purchase to satisfy warranty requirements.
- Although many dealerships will eventually service products not purchased at their place of business, they will usually take care of their customers and other Forest River customers who are traveling away from their local dealer as they would their own.
- Local purchases allow a customer to establish a relationship with a dealer close to home. This relationship provides the customer with a convenient location for service and support from a "home town" professional.
- The opportunity for a thorough PDI (Pre Delivery Inspection) and product orientation is an additional benefit of buying from your local dealer. Further providing the opportunity for refresher courses or the ability to get questions answered much more conveniently.
- For our Canadian customers, there are also requirements which must be met to bring an RV purchased out of the country to their home. Although not insurmountable, these requirements may involve such things as additional inspections and certifications, taxes and fees. Your local Canadian Dealer is a professional at meeting these requirements.

Forest River's goal is for all RV Owners to fully enjoy their RV experience. In light of this goal, and considering the advantages of buying local, we encourage you to be thorough when determining what product to purchase and which dealer to purchase it from as both are key to your ultimate satisfaction and the realization of your dreams.



FOREST RIVER'S HALLMARK OF EXCELLENCE



20,000 SQUARE FEET OF QUALITY ASSURANCE.

THE BARE ESSENTIALS FOR A PREMIUM PRODUCT.

Brought online in 2005, Forest River is proud of its state-of-the-art test facility. This beautiful building blends many of the old tried and true methods of testing our diverse types of RVs with new innovative ways of solving quality issues. Being centrally located to most Forest River manufacturing facilities, this 20,000 square foot PDI (Pre-delivery Inspection) test building gives immediate daily feedback to individual managers. This assures the production facilities that nothing has slipped by the plant's quality assurance personnel and the units are "green" and ready to ship.



PEACE OF MIND.

Forest River has yet another exclusive feature to offer: One year of free roadside assistance will be given to every new Sandpiper customer. This is just one more way to say "Thank you" and to ensure an enjoyable traveling experience.



Forest River, Inc.
 914 C.R. 1
 Elkhart, IN 46514
 (574) 533-5934
www.forestriverinc.com
www.forestriveraccessories.com



All specifications contained herein are based on the latest product information at time of printing. Forest River reserves the right to make changes in colors, materials, equipment and specifications at any time without notice and assumes no responsibility for any errors in this brochure. PIP041808

The Dexter Difference

E-Z LUBE™
BEARING LUBRICATION SYSTEM

The E-Z Lube system allows grease to flow with ease to both the outer and inner bearings for a complete repack. No disassembly required.

NEV-R-ADJUST™
FORMERLY SELF-ADJUSTING ELECTRIC BRAKES

The NEV-R-ADJUST™ brake system automatically forward adjusts, reducing stopping distance and saving you time and money.

DEXTER AXLE

2 Year Warranty
SEEK OUR CENTER

© 2011 Dexter Corporation

Your Sandpiper Dealer

