

2011

Eagle Super Lite HT

LITE-WEIGHT HALF-TON FIFTH WHEELS BY JAYCO



AMERICA'S MOST **LIVEABLE** RVs.

Eagle Super Lite HT[®]

Specifically designed for today's smaller trucks and lighter than other fifth wheels on the market, the Jayco[®] Eagle Super Lite HT boasts convenient amenities and quality construction, like:

- New full-body grey fiberglass exterior
- Aerodynamic gel-coat front cap
- Suite-style closet slide in bedroom (select models)
- Dual pots and pans drawer
- 60/40 deep bowl kitchen sinks
- 15" Goodyear brand radial tires, aluminum rims and Torq-n-Go lug nuts
- TuffShell vacuum-bonded laminated floor, sidewalls and slide rooms
- 26" LDC HDTV with 180-degree viewing angle
- Full-extension ball bearing drawer guides throughout

↑ LIVEABLE FEATURES



EXTERIOR KITCHEN

Spend even more time outdoors with Eagle Super Lite HT's standard exterior kitchen, complete with a two-burner stove.



MODERN KITCHEN

The kitchen boasts Concord Cherry cabinetry, a three-burner stove and a Norcold refrigerator.



EYE-CATCHING EXTERIOR

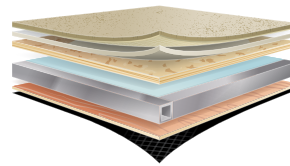
The new full-body grey-colored fiberglass exterior makes Eagle Super Lite HT stand out.



↑ CERTIFIED GREEN

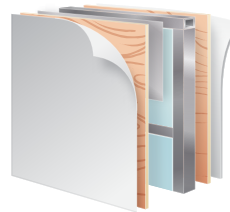
All Jayco products are green certified by TRA Certification Inc., an independent, third-party certification agency. Eagle earned gold certification through the use of sustainable materials, environmentally-friendly production methods, energy-efficient components and reduction of waste.

↑ JAYCO CONSTRUCTION



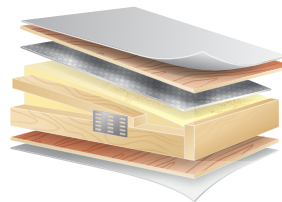
FLOOR

Vacuum-bonded lamination joins our welded aluminum frame with bead-foam insulation and decking to create one of the industry's strongest foundations (R-9).



WALLS

TuffShell vacuum-bonded lamination combines welded aluminum frames, bead-foam insulation, metal backers, decorative interior wall panels and fiberglass exterior siding, creating a durable structure designed to withstand use and travel (R-7).



ROOF

A combination of $\frac{3}{8}$ " plywood decking, wood rafters with 4 $\frac{1}{2}$ " arched trusses, fiberglass insulation and a seamless rubber shield protect against moisture and resist aging (R-8).

Eagle Super Lite HT | STANDARDS AND OPTIONS

STANDARD BATHROOM EQUIPMENT

Bath hardware items

- ⬆ Enlarged sink bowl
- ⬆ Glass shower door

Hallway linen
Marine toilet with foot flush
Medicine cabinet with mirror
Switches for all lights
Vinyl flooring

STANDARD BEDROOM EQUIPMENT

- ⬆ 60"x 80" mattress
- Decorative padded headboard
- Full trunk storage under bed
- Solid passage door to main bedroom
- ⬆ Suite-style closet slide in bedroom
- ⬆ TV area prepped for LCD mounting bracket
- Under-bed storage, bed lifts easily on gas struts

STANDARD KITCHEN EQUIPMENT

- 3-burner range and 17" oven
- 6-cu. ft. flush-mount refrigerator
- 12" decorative backsplash
- ⬆ 60/40 deep bowl kitchen sinks
- ⬆ Concord Cherry raised-panel refrigerator front
- ⬆ Countertop extension
- Door access to dinette storage bases
- Drawer for silverware, divided for utensils
- ⬆ Dual pots and pans drawers in kitchen
- Extra large picture window at dinette
- High-rise mixing faucet
- Pantry
- Range hood with light and exhaust fan

STANDARD CONSTRUCTION FEATURES

- 4 1/2" arched truss roof rafters with 3/8" screwed plywood roof decking (R-8)
- ⬆ Aerodynamic gel-coat front cap
- ⬆ Electric powered slideout(s)
- Extended pin box
- ⬆ Heated and enclosed fresh water and holding tanks
- ⬆ I-Class structural steel I-beam frame
- Poly Flex one-piece moisture barrier underbelly covering
- ⬆ Reflective foil insulation in slideout roof and floor
- Seamless one-piece rubber roof
- ⬆ TuffShell vacuum-bonded laminated sidewalls, slide rooms and rear wall
- ⬆ TuffShell vacuum-bonded laminated floor
- ⬆ Welded tubular aluminum floor, sidewall, slide room and floor framework

STANDARD EXTERIOR EQUIPMENT

- ⬆ 15" Goodyear brand radial tires
- ABS fender skirts
- Amber patio light with inside switch
- ⬆ Big Easy entry step with 10" tread
- ⬆ Black-framed 30" radius-cornered laminated main entry door
- ⬆ Door-side security light
- E-Z Lube axles
- Electric powered front jacks with extended quick release pins
- ⬆ Exterior kitchen
- ⬆ Exterior speakers, high-output marine grade (2)
- Folding exterior grab handle
- Painted bottom radius skirting
- Pass-through storage compartment
- Rain guttering, molded with extended drip spouts
- Rear stabilizer jacks (2)
- ⬆ Torq-N-Go wheel nuts

STANDARD INTERIOR EQUIPMENT

- ⬆ 26" LCD HDTV with 180-degree viewing angle
- ⬆ Ball bearing drawer guides throughout, 50-lb. capacity with full-drawer extension
- Cable and satellite TV prep
- ⬆ Concord Cherry stained cabinetry
- Crank-up HDTV antenna with signal boost
- J-Steel convertible sofa
- Linoleum floor in entry, kitchen and bath
- Nickel cabinet hardware and lighting
- Overhead cabinet in slideout room
- ⬆ Pleated night shades
- ⬆ Pre-drilled and screwed Lumbercore cabinetry construction
- Raised-panel arched cabinet doors throughout
- ⬆ Residential furniture, designed and made by Jayco
- Roof-mounted antenna for radio
- Swivel rocker(s)
- Trackless carpeting with pad
- Wallpaper border

STANDARD HEAT, POWER & WATER EQUIPMENT

- ⬆ 6-gal. gas/electric water heater with DSI
- 12V demand water pump
- 12V electrical system with deluxe 120V 45-amp power converter
- 30-amp power cord
- 120V G.F.C.I. protected exterior receptacle
- ABS holding tanks
- Auto-ignition furnace with wall thermostat
- ⬆ Black holding tank sprayer
- Gravity fill for water

Hookup for city water
In-floor ducted heating
Outside shower
Rotocast fresh water holding tank
Single battery box
Systems monitor panel
Water system winterization kit

STANDARD SAFETY EQUIPMENT

Breakaway switch
Deadbolt lock on entry door
Egress window
Fire extinguisher
Propane/carbon monoxide alarm
Smoke alarm
Tinted safety-glass windows

OPTIONS

- Air hide-a-bed sofa
- ⬆ Aluminum rims (mandatory option)
- ⬆ Customer Value Package (mandatory option)
- Customer Value Package with 15,000-BTU A/C
- Electric stabilizer jacks
- Free standing table and (4) chairs
- Linoleum in living area
- Reese Revolution pin box
- Satellite kit
- Spare tire and carrier
- Thermo-pane window package
- Water purifier

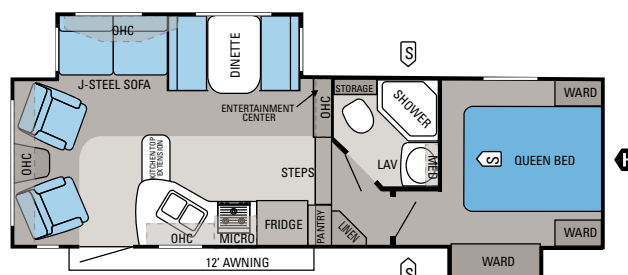
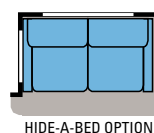
⬆ CUSTOMER VALUE PACKAGE

30-lb. propane bottles
13,500-BTU A/C with Chillgrille
Electric patio awning
Microwave oven with carousel
Multi-Media Premium Sound System (CD/DVD/AM/FM/MP3)
Quilted bedspread
Shirt closets in bedroom
Sink covers
Skylight in tub/shower
Tub surround
Water heater bypass

Eagle Super Lite HT | SPECIFICATIONS

| FLOORPLAN | EXTERIOR LENGTH | EXTERIOR HEIGHT (WITH A/C) | INTERIOR HEIGHT | UNLOADED VEHICLE WEIGHT (LBS.) | DRY HITCH WEIGHT (LBS.) | GROSS VEHICLE WEIGHT RATING (LBS.) | CARGO CARRYING CAPACITY (LBS.) | FRESH WATER CAPACITY (GAL.) (WITH WATER HEATER) | GRAY WASTEWATER CAPACITY (GAL.) | TOILET/BLACK WASTEWATER CAPACITY (GAL.) |
|-----------|-----------------|----------------------------|-----------------|--------------------------------|-------------------------|------------------------------------|--------------------------------|---|---------------------------------|---|
| 26.5RLS | 29' 9" | 147" | 77" | 6,800 | 1,435 | 9,950 | 3,150 | 54 | 65 | 32.5 |

Eagle Super Lite HT | 26.5RLS FLOORPLAN



Ext. Length: 29' 9" Ext. Height: 147" Unloaded Weight (lbs.): 6,800



AMERICA'S MOST **LIVEABLE** RVs.



WARRANTY

INDUSTRY-LEADING WARRANTY

The Jayco Co-Pilot Warranty is a manufacturer's limited warranty. It comes from the people who build Jayco recreation vehicles to the people who buy them. Each Jayco is warranted to the original purchaser for twenty-four (24) months or twenty-four thousand (24,000) miles (mileage limitation applies to motorized products only), whichever occurs first, from the original date of purchase against defects in materials and workmanship. Jayco's limited warranty is not transferable. Go ahead and compare the Jayco warranty with other manufacturers' warranties. You'll find it's the best in the business!

For a copy of the limited warranty with full terms and conditions, ask your local Jayco dealer.



OVER 300 LOCAL DEALERS

Establishing a solid relationship with your local Jayco dealer is a key component in the enjoyment of your new Jayco. By purchasing from a local dealer, you will have a convenient location for sales, parts and service support.

Jayco dealers are required to deliver all products at the site of the sale to provide a full product orientation and walkthrough at the time of delivery. It's a good way to become familiar with your Jayco and to meet the service, parts and warranty staff members who will be assisting you. If you live in Canada, there are regulations that must be met when buying a Jayco RV. Your local Canadian dealer is a professional at meeting these requirements and regulations. There simply is no substitute for a good relationship with your local Jayco dealer.



1-YEAR ROADSIDE ASSISTANCE

Travel worry-free with Jayco's Customer First Roadside Assistance program, yours at no cost during your first year of ownership. This program is offered through Coach-Net, the largest RV emergency road service in the country, and gives you immediate access to dependable roadside assistance and support services with a simple phone call.

- Free jump starts
- Free tire changes
- Free fuel delivery
- Free lockout service
- Free travelers checks
- Toll-free nationwide service appointment assistance
- 24-hour toll-free emergency message service
- Free custom trip routing and full-color map service
- Free dispatch of on-site mechanical service
- \$2,000 trip-interruption reimbursement
- RV technical assistance hotline
- Free towing to nearest qualified service

Your Jayco Dealer



Jayco proudly sponsors Tread Lightly!, a nonprofit organization whose mission is to empower generations to enjoy the outdoors responsibly through education and restoration.



From RV insurance to extended warranties, JayPlus has it covered. Ask your Jayco dealer about our exclusive JayPlus program today.



As a Jayco owner, you can be part of the Jayco Jafari International Travel Club. Ask your dealer about the Jafari "flight" in your area, write Jayco or visit our website.

Unloaded Vehicle Weight (UVW): Sometimes referred to as "Dry Weight," UVW means the typical weight of this trailer as built at the factory. The UVW, as used in product literature and other promotional materials, does not include cargo, fresh water, propane, options or dealer-installed accessories.

Gross Vehicle Weight Rating (GVWR): GVWR means the maximum permissible weight of the trailer, including the UVW plus passengers, personal items, all cargo, fluids, options, and dealer-installed accessories. The GVWR is equal to or greater than the sum of the UVW and the CCC.

Cargo Carrying Capacity (CCC): CCC means the maximum weight of all passengers, personal items, food, fresh water, propane, tools, other cargo and dealer-installed accessories that can be carried by the trailer. CCC is equal to or less than GVWR minus UVW. The addition of options will decrease the CCC.

Hitch Weight (HW): The hitch weight, as used in product literature and other promotional materials, does not include cargo, fresh water, propane gas, options or dealer-installed accessories. The addition of these types of items will either add to or subtract from the stated hitch weight.

It is important for your safety and enjoyment that your tow vehicle be adequately sized and equipped to tow and handle the GVWR of the RV you select. Review weights and rating of your tow vehicle and consult a competent advisor for questions or advice. Whether you are new to RVing or a veteran, get a feel for the performance of your tow vehicle before heading out on the roadways. When you tow an RV, you must drive differently than when you drive a single vehicle. Practice hooking up, driving, backing up and braking in a safe environment or seek out professional instruction. Jayco affixes a weight label to each RV which lists weight information for that vehicle. See specifications chart inside.

Jayco, Inc., P.O. Box 460, Middlebury, IN 46540, www.jayco.com 

See dealer for further information and prices. All information in this brochure is the latest available at the time of publication approval. Jayco reserves the right to make changes and to discontinue models without notice or obligation. Photos in this brochure may show optional equipment and props for photography purposes. RVs built for sale in Canada may differ to conform to Canadian codes. ©2010 Jayco, Inc. 11-ESLH-PL 1110-1K Printed in U.S.A.