

# PREMIER

ULTRA LITE BY BULLET



[www.keystonerv.com/Premier](http://www.keystonerv.com/Premier)

# PREMIER

ULTRA LITE BY BULLET

*Premier luxury surrounds you with “at home” comfort.*



*From floorplan layout to interior and exterior styling, Premier is in a class by itself.*



32BHPR | Outdoor Kitchen





**26RBPR | MAIN LIVING AREA**

*Shown with saddle decor*

[www.keystonerv.com/Premier](http://www.keystonerv.com/Premier)

# PREMIER

ULTRA LITE BY BULLET



30R1PR | KITCHEN



32BHPR | Large entertainment center | Saddle Decor



31BHPR | Bunk room



Electric adjustable awning



Stor-mor dinette drawers



Mullion doors

Largest pass-thru storage in its class

Laundry chute in master bedroom

Frameless tinted windows



Progressive interior lighting in master bedroom



Tri-fold sofa

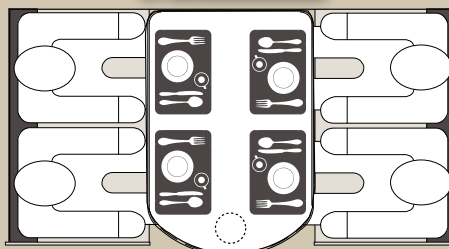


Max depth slideout room is 36" deep

## COMPARE PREMIER'S DINETTE TO THE COMPETITION



### PREMIER

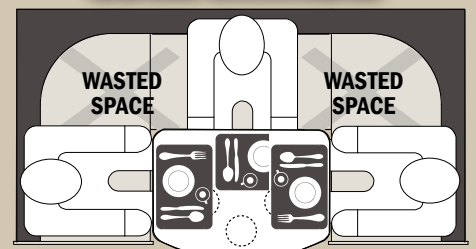


**LARGE RADIUS  
DINETTE  
(N/A 19FB & 22RB)**

**COMFORTABLY  
SEATS 4 ADULTS**

- PLENTY OF ROOM FOR 4 PLACEMATS
- ONLY NEEDS ONE TABLE SUPPORT
- CONVERTS TO 80" BED

### COMPETITION



**DON'T BE FOOLED!  
ONLY SEATS 3 ADULTS**

- ONLY ENOUGH ROOM FOR 2.5 PLACEMATS
- 3 PEDESTAL SUPPORTS REDUCE LEG ROOM
- ALSO CONVERTS TO 80" BED

# PREMIER

ULTRA LITE BY BULLET

Premier has **LUXURY FEATURES** that matter most in Ultra-Lites.



8 cu. ft. refrigerator



Retractable kitchen faucet

CD/DVD/AM/FM/MP3 stereo



Slam latch pass thru storage doors



Storage underneath the queen bed



Rolled roof edge promotes increased water runoff



LED Puck ceiling lights

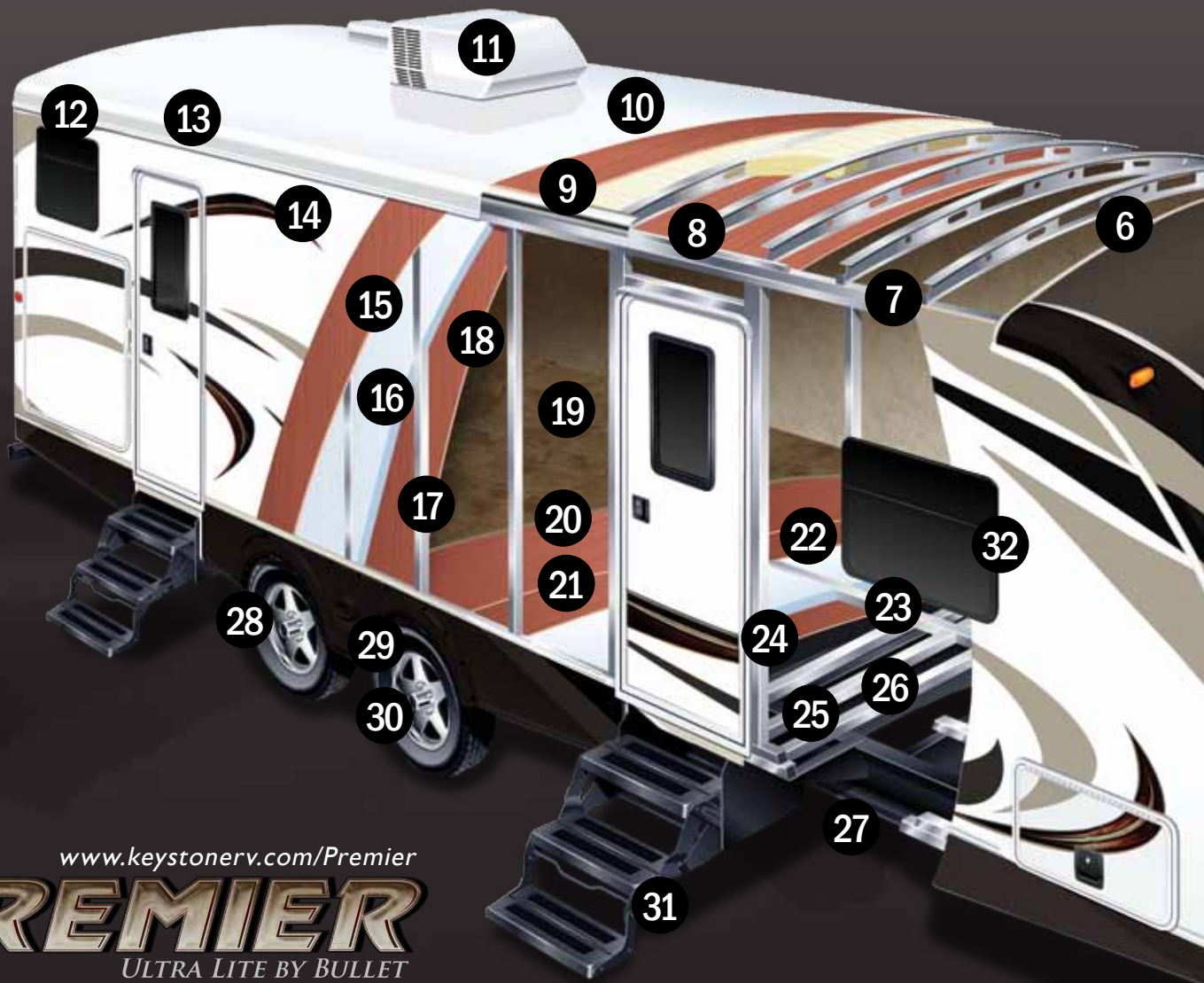


Raised panel cabinetry



Bullet is the only ultra lite travel trailer to offer the following climate control features in all floorplans:

PREMIER	COMPETITION
Enclosed underbelly	Exposed Tanks
2" pipe off of furnace with forced air into underbelly	Radiant Heat Only
30,000 BTU Furnace	20,000 - 25,000 BTU Furnace
Ducted Heat and A/C	Non Ducted Heat and A/C



[www.keystonerv.com/Premier](http://www.keystonerv.com/Premier)

**PREMIER**  
ULTRA LITE BY BULLET

## BENEFITS OF A MOLDED GEL COAT FIBERGLASS FRONT CAP



### PREMIER vs.



1/4" Thick molded gel coat fiberglass won't cold crack and is strong enough to hold up to rock damage unlike competitors ABS panels.



High gloss finish eliminates the fading that happens over time on ABS panels.



Molded over edges of front end of trailer to prevent leaks



Radius shape vertically and also side to side for superior aerodynamics

### COMPETITION



90 DEGREE SEAM

ABS PANEL

SEAM



# Lightweight Solid CONSTRUCTION



1. Power Tongue Jack
2. Quick Access LP Cover
3. Integrated Dual Battery Tray
4. LED Docking Lights
5. Dual Radius Fiberglass Front Cap
6. 5" Radius Galvanized Stamped Steel Roof Trusses
7. Hurricane Straps
8. Fully Insulated Roof
9. Durable Roof Decking
10. One Piece TPO Roof
11. 13.5 Quick Cool Air Conditioning
12. Full Length Rain Gutter and 4" Drip Spouts
13. Rolled Roof Edge
14. Smooth Fiberglass Exterior
15. 1/8" Luan Wall Backing
16. Hi-Density Block Foam Insulation
17. 1 1/2" Box Welded Aluminum Frame Structure
18. Decorative Interior Wall Board
19. Residential Stain Resistant Linoleum
20. 1st Layer Floor Decking
21. 2nd Layer Floor Decking
22. Hi-Density In Floor Block Foam Insulation
23. Welded Aluminum Floor Joists
24. 3rd Layer Floor Decking
25. 6.5" – 10" Steel I-Beam Frame
26. Darco Vapor Barrier Wrap
27. Enclosed Underbelly
28. Radial Tires with Electric Brakes (4)
29. 43" Wide Stance Axles
30. Easy Lube Axles
31. Radius Entry Steps
32. Frameless Tinted Windows

## BEST TOWING TRAVEL TRAILER IN THE INDUSTRY

*Increased MPG and Easier to tow*



*The rear departure angle increases efficiency of windflow underneath and behind the trailer.*



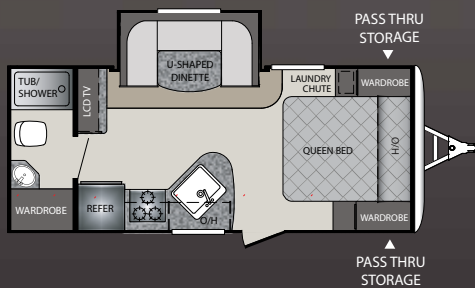
*The enclosed underbelly eliminates turbulence caused by exposed frame members, holding tanks, plumbing etc.*



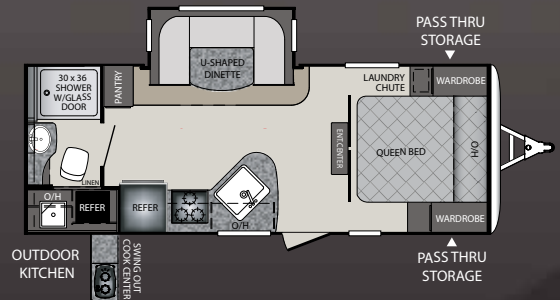
*43" wide stance axle greatly reduces sway and bouncing*

# TRAVEL TRAILER FLOORPLANS

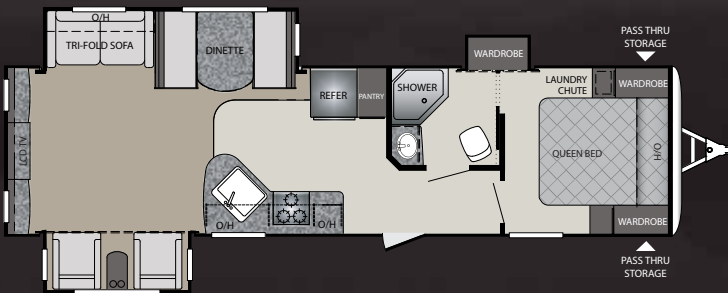
You'll find a Premier floorplan to fit your lifestyle perfectly.



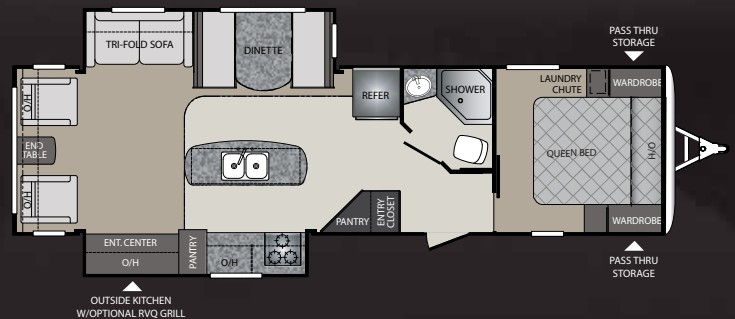
**19FBPR**



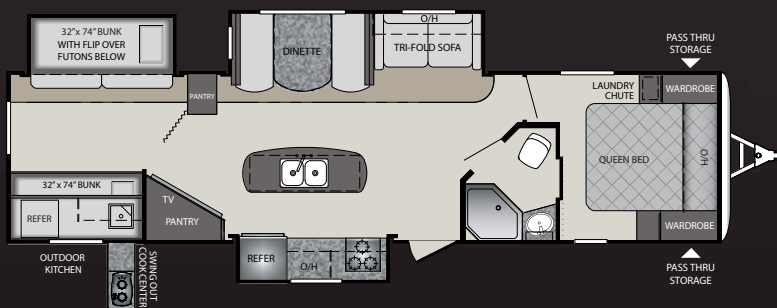
**22RBPR**



**30REPR**



**30RIPR**

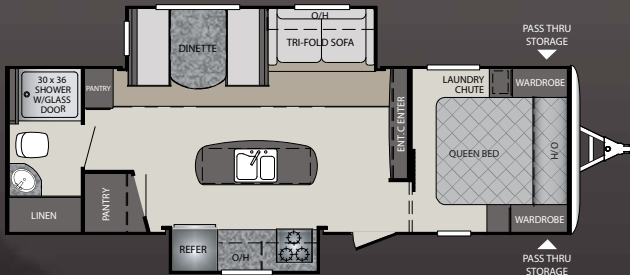


**34BHPR**

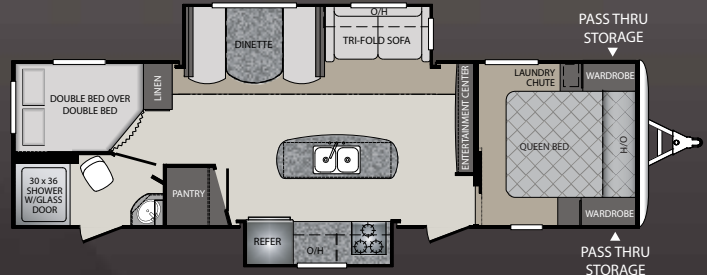
Product information is as accurate as possible at the date of publication of this brochure. Features, floor plans, and specifications are subject to change without notice. Please also consult Keystone's web site at [keystonerv.com](http://keystonerv.com) for more current product information and specifications. Tow Vehicle Disclaimer. CAUTION: Owners of Keystone recreational vehicles are solely responsible for the selection and proper use of tow vehicles. All customers should consult with a motor vehicle manufacturer or their dealer concerning the purchase and use of suitable tow vehicles for Keystone products. Keystone disclaims any liability or damages suffered as a result of the selection, operation, use or misuse of a tow vehicle. KEYSTONE'S LIMITED WARRANTY DOES NOT COVER DAMAGE TO THE RECREATIONAL VEHICLE OR THE TOW VEHICLE AS A RESULT OF THE SELECTION, OPERATION, USE OR MISUSE OF THE TOW VEHICLE.

# PREMIER

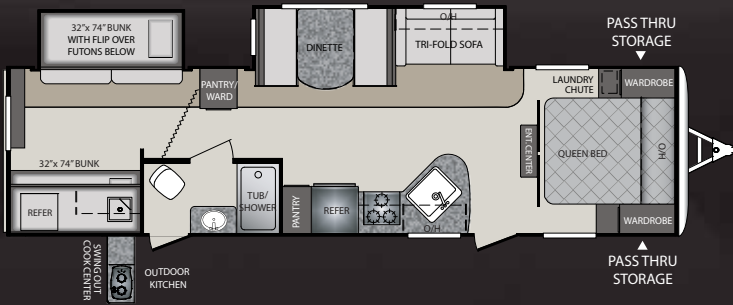
ULTRA LITE BY BULLET



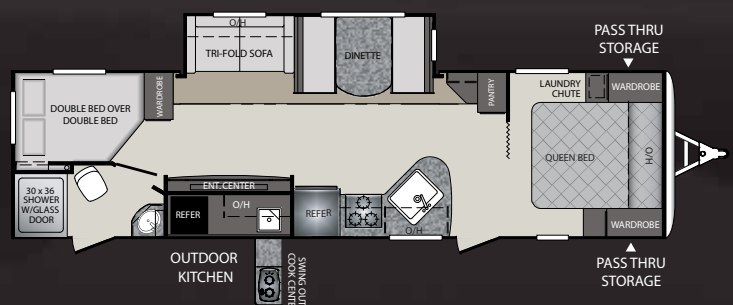
26RBPR



29BHPR



31BHPR



32BHPR

## WEIGHTS & MEASUREMENTS

TRAVEL TRAILERS	19FBPR	22RBPR	26RBPR	29BHPR	30REPR	30RIPR	31BHPR	32BHPR	34BHPR
SHIPPING WEIGHT	4206	4690	5788	6260	6463	6632	6482	6257	7079
CARRYING CAPACITY	2294	4820	1712	1490	1537	1368	1518	1343	1721
HITCH WEIGHT	410	500	835	835	745	725	795	735	845
EXTERIOR LENGTH	23' 2"	25' 6"	30' 6"	33' 8"	34' 11"	34' 6"	35' 4"	34' 9"	37' 0"
EXTERIOR WIDTH	8'	8'	8'	8'	8'	8'	8'	8'	8'
EXT. HEIGHT - A/C TOP	10' 11"	10' 11"	10' 11"	10' 11"	10' 11"	10' 11"	10' 11"	10' 11"	11' 0"
FRESH WATER (GAL.)	43	43	43	43	43	43	43	43	43
WASTE WATER (GAL.)	30	30	30	30	30	30	30	30	30
GRAY WATER (GAL.)	30	30	60	60	30	60	30	60	60
LP CAPACITY (LBS.)	40	40	40	40	40	40	40	40	40

# STANDARDS & OPTIONS

## CONSTRUCTION STANDARDS

- Aggressive Front Profile for Increased Towability
- Aluminum Framed Front, End and Side Walls
- Laminated Fiberglass Exterior Side Walls
- 2" Thick Laminated Aluminum Floor
- In Frame Fresh, Grey, and Black Water Tanks
- 6.5" - 10" Steel I-Beam with Full-Length Welded Outrigger
- ¼" ABS Enclosed Underbelly
- Darco Moisture Barrier
- One Piece TPO Roof
- E-Z Lube Axles
- Electric Brake System (4 wheels)
- R-11 Insulation in Floor
- R-7 Insulation in Sidewalls
- R-11 Insulation in Roof

## EXTERIOR CAMPING PACKAGE

- Wide Stance E-Z Lube Axles
- 6 Gallon Gas/Electric DSI Water Heater
- Radius Entry Door with Gas Strut
- Outside Speakers
- Outside Shower (Hot and Cold Water)
- 4 Stabilizer Jacks
- TV Antenna and Cable Hook-Up
- Electric Awning with Adjustable Arms
- Radial Tires

## EXTERIOR FEATURES

- Outdoor Kitchen (22RB, 30RI, 31BH, 32BH, 34BH)
- Aluminum Wheels
- Dual Propane Tanks with Cover
- In Frame Dual Battery Rack
- Oversized Exterior Pass Thru Storage with Lighting
- LP Quick Connect
- Amber Patio Light
- Spare Tire
- Oversized Grab Handle (main door)
- Triple Entry Steps
- Slam Baggage Doors

## INTERIOR CAMPING PACKAGE

- 13.5 BTU Ducted A/C
- Night Shades
- CD/DVD/AM/FM Stereo with Aux and I-Pod Hookup
- 32" LCD TV
- Microwave
- 8 cu./ft. Double Door Refrigerator
- 3 Burner High Output Range
- Retractable Faucet
- All Raised Panel Hardwood Cabinet Doors
- Foot Flush Toilet
- Tub Surround with Shelves
- Full Extension Drawer Glides
- Tri-Fold Sofa (select models)
- Stainless Steel Sink

## INTERIOR FEATURES

- 6' 11" Vaulted Ceiling
- Flexible Fiberglass Reinforced Flooring
- Swivel Rockers
- Upgraded Residential Furniture
- Night Shades in Living Area
- 17" Oven
- Decorative Wall Border
- Stor-mor dinette
- Retractable Kitchen Faucet

## BATHROOM

- Oversized Showers w/GlassDoor (N/A on 19FB, 31BH)
- Power Vent Fan
- Solid Wood Medicine Cabinet
- Linen Storage

## MASTER BEDROOM

- Upgraded Memory Foam Mattress
- Mirrored Wardrobes
- Laundry Chute
- Under Bed Storage
- Individual Reading Lights
- Accent Wallboard

## SAFETY EQUIPMENT

- Carbon Monoxide Detector
- Smoke Alarm
- Fire Extinguisher
- Electric Brakes
- Safety Chains
- Frameless Tinted Safety Glass Windows, Egress Windows (Fire Escape)
- GFI Receipts

## OPTIONS

- Bumper Mounted Aussie Grill
- 15K A/C
- 50 AMP Service w/Wire and Brace for second A/C (N/A 19FB, 22RB)

## THERMAL PACKAGE

- Heated and Enclosed Underbelly
- 2" Pipe off of Furnace to Underbelly
- 30K BTU Furnace and Residential Heat Ducts



## PREMIER PACKAGE

- Aerodynamic Fiberglass Front Cap
- Vaulted Ceiling System
- Frameless Tinted Windows
- Power Tongue Jack
- Tri-Fold Sofa
- Max Depth Slides
- LED Flush Mounted Puck Lighting
- Upgraded Exterior Graphics Package
- Black Tank Flush

### DUNE



### SADDLE



### CHARCOAL



YOUR LOCAL DEALER:



Go RVing  
Life's A Trip

[www.keystonerv.com/Premier](http://www.keystonerv.com/Premier)

**PREMIER**  
ULTRA LITE BY BULLET

 **Keystone RV Company**  
[www.keystonerv.com](http://www.keystonerv.com)

2642 Hackberry Drive | PO Box 2000  
Goshen, IN 46527-2000  
(574) 535-2100

March 2014