

Montana

HIGH COUNTRY



MORE FEATURES | LESS WEIGHT



Montana

HIGH COUNTRY



313RE | KITCHEN, LIVING ROOM & ENTERTAINMENT CENTER | SHOWN IN OXFORD DECOR

- 1 Beautiful Solid Surface Countertop
- 2 Decorative Metal Dinette Chairs
- 3 42" LCD Pop-Up HDTV
- 4 Optional Electric Fireplace with E-Stone Surround
- 5 Glazed Cherry Hardwood Cabinets
- 6 Etched Black Glass, Decorative Door Inserts



313RE | L-SHAPED SOFA W/HID-A-BED



313RE | BEDROOM IN OXFORD DECOR



313RE | PANTRY

WE DIDN'T LEAVE ANYTHING OUT...

- Helium Technology Construction (Up to 2,500 Pound Weight Savings)
- Smoke Gray Hi Gloss Exterior
- Generation II Easy Set Digital Remote Control System
- All Aluminum Wheels
- 6' 5" Height in Bedroom - Main Deck
- Enclosed Exterior Convenience Center
- Electric Stabilizer Jacks
- Glazed Cherry Hardwood Cabinets
- Decorative Roman Style Bedroom Shades
- Fully Enclosed & Heated Underbelly
- 8 Cubic Ft. Refrigerator
- Etched Black Glass, Decorative Door Inserts

REVOLUTIONARY HELIUM TECHNOLOGY



When the engineering, sales and purchasing team at Keystone RV challenged themselves to reinvent the way RVs are built, the mission was clear. To create a new RV that offers unheard of weight savings without sacrificing product integrity, livability, or overall size.

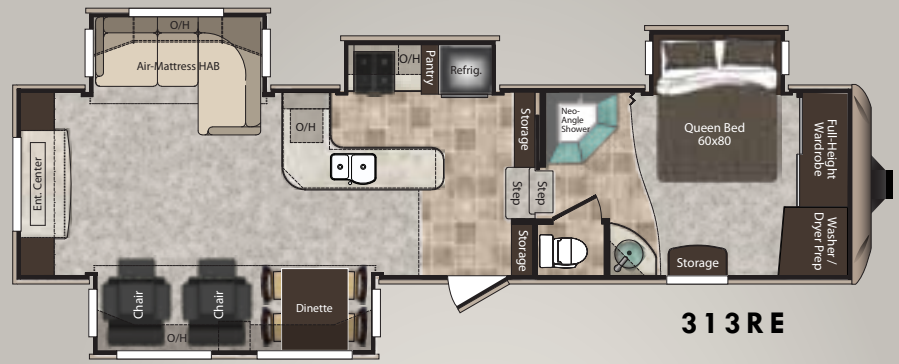
After thousands of hours of research, hands on development, and countless laps on the grueling Bosch Proving Grounds test track, the results are in. Witness the new Montana High Country Fifth Wheel with Helium Technology. By utilizing new and unique construction materials in conjunction with creative manufacturing process and design, Helium Technology has enabled Keystone to significantly reduce weight without sacrifice. The new Montana High Country is the culmination of this effort.

MAX TURN TECHNOLOGY

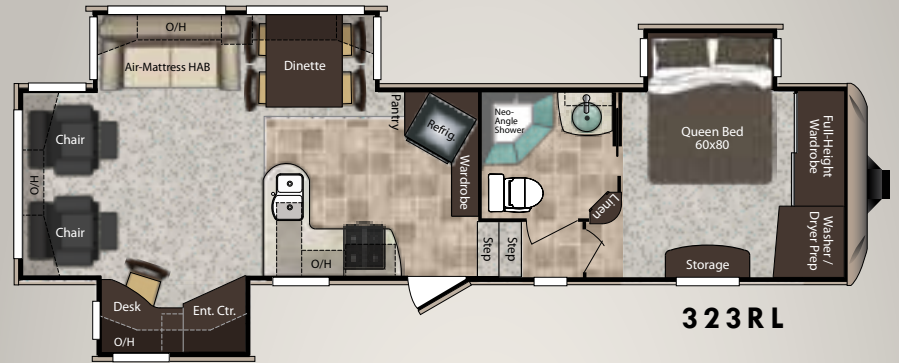
Montana High Country's specially designed front cap substantially improves the turning radius of our fifth wheels. You'll be able to handle tight parking maneuvers even when attached to short bed pick-up trucks.



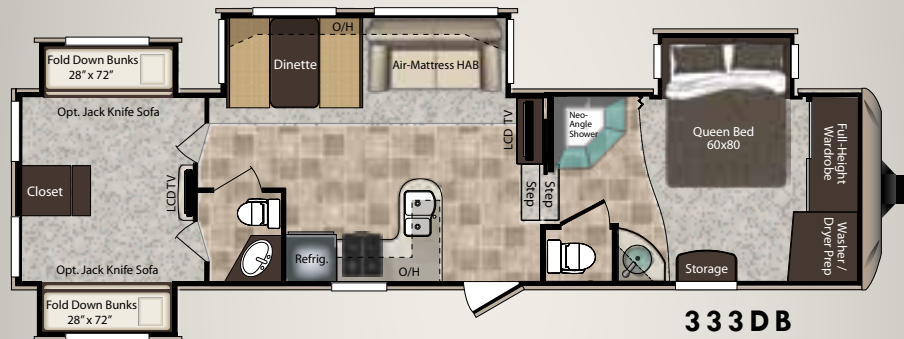
Montana High Country has a heavy-duty extended hitch pin



313RE



323RL



333DB



343RL

SPECIFICATIONS

Model	313RE	323RL	333DB	343RL
Shipping Weight	9630	9249	9571	9670
Carrying Capacity	2820	3021	2929	2740
Hitch	2055	1870	2075	1740
Length	35' 8"	36' 3"	36' 5"	37' 11"
Height	12' 9"	12' 9"	12' 9"	12' 9"
Fresh Water	64	64	64	64
Waste Water	50	50	93	50
Gray Water	93	93	93	93
LPG	60	60	60	60
Awning Length	15'	16'	19'	16'

View Snapshot Photos of Floorplan Interiors at:
www.keystone-highcountry/Montana.com



HIGH COUNTRY STANDARDS & OPTIONS

MOVING TO MONTANA PACKAGE

- Fabric Bedroom Headboard
- (2) Bedside Windows in Slide-Out
- 12-volt FM/CD/DVD with Surround Sound
- RG6 Satellite Prep
- 50 Amp Service
- 10 Gallon DSI 110/12v Water Heater
- Deluxe Porcelain Toilet
- Sky dome Over Tub
- 8-foot Large Double Door Refrigerator
- Range Cover
- Electric Front Jacks
- Fold Away Entry Handle
- Rear Roof Ladder
- (2) Patio Outdoor Activity Lights
- Black Tank Flush
- Undermount Spare Tire and Carrier
- Air Mattress Hide-A-Bed Sofa
- Glacier Package with R-21 Floor Insulation
- Outside Shower with Quick Connect Hose
- Washer/Dryer Prep
- Outside Speakers
- Power Vent Fan
- Ceiling Fan with Light
- 15,000 BTU A/C with Quick Cool
- Deep Tint Safety Glass Windows
- Dexter E-Z Lube Axles with 8 Lug Wheels
- Microwave
- High Output Range with Automatic Igniter
- 22-inch Oven with Broiler
- Double Sink with High Rise Faucet
- Cabinet Toe Kicks
- Water Heater By-Pass
- Deluxe Queen (60 by 80-inch) Innerspring Mattress
- Reading Light Over Bed
- Digital TV Antenna with Booster

HIGH COUNTRY PACKAGE

- Helium Technology Construction
- Smoke Gray Hi Gloss Exterior
- Dynamic Metallic Exterior Graphics
- Radius Rear Fiberglass Cap
- Raised Panel Interior Cabinets
- Vessel Bowl Bathroom Sink
- Decorative Iron Curtain Rods and Bedroom Roman Blinds
- Max Turn Front Cap and Radius Frame
- Drop Frame Pass Through Storage Compartment
- Gen II EasySet Remote Control
- Electric Rear Stabilizer Jacks
- Exterior Convenience Center
- 12 Volt Electric Awning
- 32-inch HD LCD TV
- Solid Surface Countertops
- Full Extension Drawer Guides



OPTIONS

- Aluminum Wheels with Equa-Flex Upgraded Suspension (Required)
- Dual Pane Windows
- Slide Awning Package
- Free Standing Dinette with Four Chairs
- High Back Desk Chair
- 12-volt 19-inch Bedroom LCD TV
- Two Jack Knife Sofas In Place of Bottom Bunks (333RL only)
- Electric Fireplace
- Second A/C, 13,500 BTU A/C in Bedroom
- Wire and Frame for Bedroom A/C
- Power Vent Fans
- Generator Prep
- Onan Marquis Gold 5.5 kw LP Generator
- 12-cubic foot Four Door Refrigerator

HIGH COUNTRY DECOR OPTIONS



WALNUT



OXFORD



SILVER SAGE

Montana
HIGH COUNTRY

www.keystone-highcountry.com/Montana



2642 Hackberry Drive
PO Box 2000
Goshen, IN 46527-2000
(574) 535-2100



www.kestonerv.com

Product information is as accurate as possible as of the date of publication of this brochure. Features, floor plans, and specifications are subject to change without notice. Please also consult Keystone's web site at kestonerv.com for more current product information and specifications. Tow Vehicle Disclaimer. CAUTION: Owners of Keystone recreational vehicles are solely responsible for the selection and proper use of tow vehicles. All customers should consult with a motor vehicle manufacturer or their dealer concerning the purchase and use of suitable tow vehicles for Keystone products. Keystone disclaims any liability or damages suffered as a result of the selection, operation, use or misuse of a tow vehicle. KEYSTONE'S LIMITED WARRANTY DOES NOT COVER DAMAGE TO THE RECREATIONAL VEHICLE OR THE TOW VEHICLE AS A RESULT OF THE SELECTION, OPERATION, USE OR MISUSE OF THE TOW VEHICLE. 2/2011

YOUR LOCAL DEALER: