

# MIRADA

Brings MORE to the road...



# High-End Value. . . Enviably Affordable.



**Step into the new Coachmen Mirada and step into something special: a Class A motorhome with high-end features at an affordable price!**

Coachmen RV, a Division of Forest River Inc., has been dedicated to giving RVers the best value for their RV dollar. Now we've focused even more on making it easier to afford the best in motorhome living. We guarantee that you'll be impressed with what your money can buy. So take a look and see the elegance, the amenities and ease of use that the Mirada brings to the road. We're leading the way in creating new travel experiences for your pleasure and your pocketbook, making today's technology work for today's RVers!



**Convenient overhead cockpit storage.**



Coach command center makes it simple to use many of the commonly used gauges and switches.

The optional entertainment/computer hutch is conveniently located behind the passenger seat (NA 29DS).



Comfortable dinette and sofa seating feature hidden storage areas.



# The Touch of Quality &



35DS Kitchen with optional Cognac Maple wood



**Whether it's your vacation home or something more, the Mirada surrounds you with amenities designed to enhance every aspect of your motorhome experience.**

Ever seen a kitchen this grand in a coach at this price point? Didn't think so. The graceful lines and designer hardware accentuate the galley's more practical features. Like the 30" residential microwave, double-door refrigerator, space-saving flush-mounted range and flush-mounted sink with Corian covers.




## Convertible Dinette

Comfortable and relaxing in any setting, the radius booth dinette is easy to take down for sleeping and is plenty spacious for enjoying quality time with family and friends.



# Elegance, Made For You.



For viewing pleasure, all Miradas have a 32" LCD TV in the living room and 19" LCD in the bedroom standard.



The Mirada's luxury bath area bring the comforts of your home with you on the road.



Floorplans with bunk beds that provide an added dose of fun via optional drop-down, dual seven-inch LCD TVs with DVD and AM/FM radio. Talk about comfy movie times!



## MIRADA PAINT SCHEMES



Oxford Onyx Graphics



Partial Paint



Silver Full Paint



Tan/Cocoa Full Paint



Tan/Black



Sandstorm

## STANDARD FEATURES

### INTERIOR APPOINTMENTS

- Brazilian cherry cabinets
- Monterey bisque wall board
- Corian kitchen countertop
- Congoleum linoleum
- Oil rubbed bronze hardware
- Hardwood cabinet/raised panel doors (upper)
- Radius slider windows with safety glass
- Reclining/swivel pilot seats
- Sofa 70" with air hide-a-bed (N/A 29DS)
- Booth dinette
- Night shades
- Euro chair (32DS, 34BH, 35DS)

### INTERIOR EQUIPMENT

- Radio AM/FM/CD
- Cable TV jack
- LP leak alarm and smoke detector
- Carbon monoxide detector
- Fire extinguisher
- Phone jack
- TV antenna and roto package
- 32" LCD TV coach and DVD player
- 19" LCD TV bedroom

### BATH AND WATER

- Porcelain toilet with foot flush
- One piece ABS shower surround
- Glass shower door
- Power bath vent
- 6-gallon (gas) DSI water heater
- Demand water pump
- Skylight over the shower
- No Mess™ termination with light, shower, pump sw.

### GALLEY

- Range hood with light
- Flush mount, double door refrigerator
- Double lever high kitchen faucets
- Double bowl kitchen sink with sink covers
- 3-burner range/oven
- 30" residential microwave

### ELECTRICAL//HEATING/AC

- 30' - 50 amp power cord
- 55 amp, 110/12-volt power converter
- GFI circuit
- Outside receptacle (OS)
- Emergency start switch
- Lighted trunk boxes
- Patio light
- 30,000 BTU E.I. furnace
- 13,500 BTU roof air conditioner-ducted
- 2nd 13,500 BTU roof AC
- Single coach battery
- 6.5 KW generator guardian
- Coach command center

### AUTOMOTIVE/EXTERIOR

- Tilt steering wheel
- Cruise control
- Intermittent wipers
- Dash air conditioning
- Radial tires
- Rear mud flaps only
- Power entrance step-double
- Crowned, laminated TPO roof
- Full basement with pass thru storage
- Radius trunk doors
- Fiberglass front cap
- Dead bolt lock-entrance door
- Radius entry door
- Patio awning
- 5,000 towing hitch with 7-way plug
- Rear mounted roof ladder
- Non-powered exterior mirrors
- Stainless steel wheel liners
- Automatic leveling jacks
- Slide-out room awnings
- High Gloss Sidewalls

### STAND ALONE OPTIONS

- Back up camera (sideview ready)
- Side view cameras
- Dual pane windows
- 2nd coach battery
- Dual 7" TV/DVD player/AM/FM radio (34BH only)

- DVD player in bedroom
- CSA upfit
- 5.5 KW Onan generator
- Power main awning
- Wardrobe IPO bunks (34BH only)
- Valve stem extenders
- Full body paint or partial paint
- Diamond shield paint protection
- Power heated mirrors
- Entertainment/Computer Hutch (N/A 29DS) IPO Euro Chair
- Outside Entertainment (N/A 29DS)
- Television (40" & 26") Upgrade (N/A 29DS)

## STANDARD FEATURES

### SILVER EDITION

- Exterior Deluxe Vinyl Graphics Package
- Onan Generator
- Automatic Leveling System
- 6 Gallon DSI Water Heater
- Exclusive AZDEL Composite Sidewall
- No Mess Termination
- One Piece Windshield
- Raised Panel Hardwood Cabinet Doors
- 32" LCD Living Area Television
- DVD Player in Living Area
- 19" LCD Bedroom Television
- Back Up Monitor
- Power Awning
- Soft Touch Pilot Chairs
- Soft Touch Hide-A-Bed w/ Air Mattress
- Even Cool A/C Duct System
- Heated Holding Tanks
- Fiberglass Front and Rear Caps
- Slide Room Awnings
- Porcelain Toilet w/ Foot Flush

### OPTIONAL:

- 50 Amp Service with Rear Air Conditioner and 5.5 Onan Generator
- Tailgate Package (310F Only)
- Lower Skirt Paint

The large, one-piece windshield plus the exclusive Sight Rite™ dash — that angles downward — provide a clear, unobstructed view of the road. Also, the easy-to-read gauges and handy controls create an intelligent, driver-friendly environment.

## MIRADA DECOR WOOD COLORS & INTERIOR PATTERNS



Brazilian Cherry



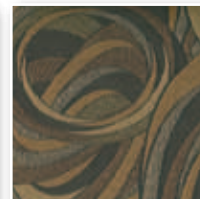
Cognac Maple



Lakeside Maple  
(Opt SE Only)



Latte

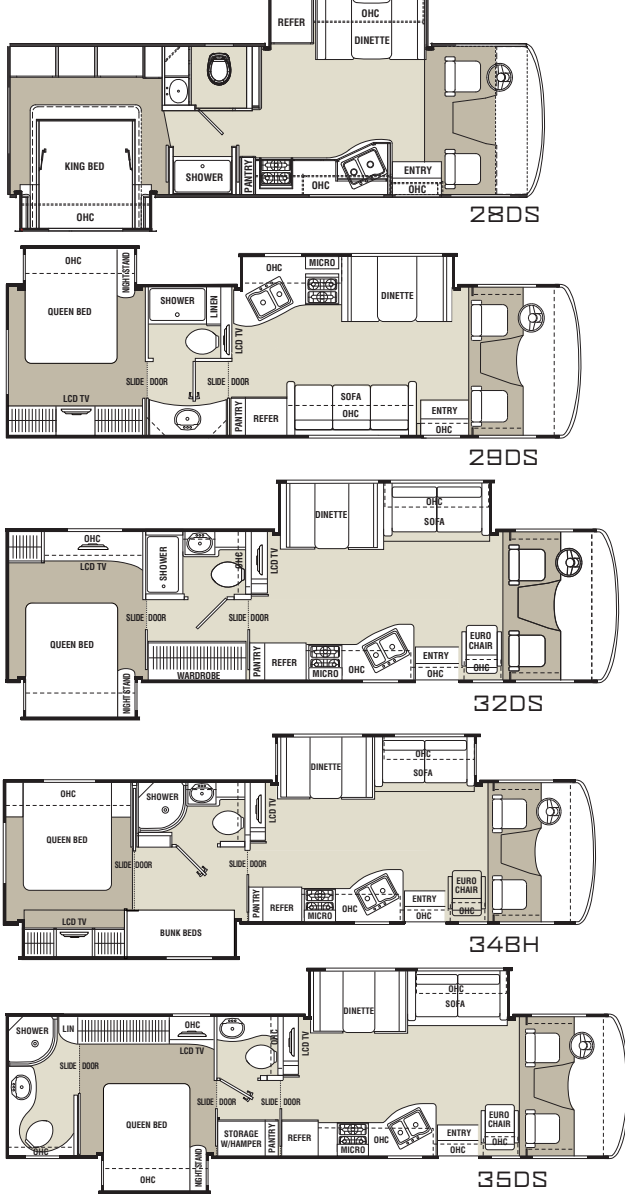


Mocha

Décor selections are subject to change throughout the model year. Please visit your Coachmen dealer or [www.easyRVing.com](http://www.easyRVing.com) for current décor availability.

# MIRADA FLOORPLANS

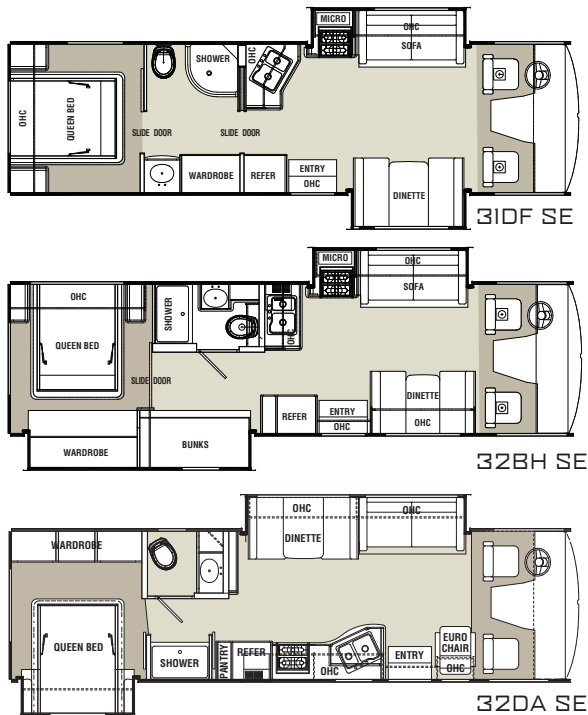
Carpet Linoleum



The Mirada Silver Edition is available with simple standard features at a simple price, loaded with many standard features.



## MIRADA (SILVER EDITION) FLOORPLANS



## Fiberglass Cap

Don't worry about which side of the gas pump you pull up to. Mirada's fuel fill is in the rear of the coach where you can reach it from both sides.



## SPECIFICATIONS

	28DS	29DS	32DS	348H	35DS	328H	31DF	32DA
Chassis	28DS	29DS	32DS	348H	35DS	328H	31DF	32DA
Engine	V-10 6.8L Triton	V-10 6.8L Triton	V-10 6.8L Triton	V-10 6.8L Triton	V-10 6.8L Triton	V-10 6.8L Triton	V-10 6.8L Triton	V-10 6.8L Triton
GVWR (lbs.)	18,000	20,500	20,500	22,000	22,000	18,000	18,000	18,000
GCWR (lbs.)	26,000	26,000	26,000	26,000	26,000	26,000	26,000	26,000

## SILVER EDITION

## MEASUREMENTS

Wheel base	208"	228"	228"	242"	242"	208"	208"	208"
Exterior (w/o ladder)	30' 3"	31' 11"	33' 11"	34' 9"	36' 6"	32' 6"	32' 6"	32' 6"
Height (with AC)	12' 3"	12' 3"	12' 3"	12' 3"	12' 3"	12'	12'	12'
Interior height	80"	80"	80"	80"	80"	80"	80"	80"
Awning size	14'	18'	18'	14'	18'	12'	12'	12'

## CAPACITIES

Fuel (gal.)	80	80	80	80	80	80	80	80
LP gas capacity (gal.)	20	20	20	20	20	20	20	20
Fresh water (gal.)	66	66	66	66	66	50	54	66
Waste water (gal.)	45	43	45	45	90	45	43	43
Gray water (gal.)	45	45	45	45	45	45	43	43
Water heater (gal.)	6	6	6	6	6	6	6	6
Furnace (BTUs)	30,000	30,000	30,000	30,000	30,000	30,000	30,000	30,000



Forest River, Inc. encourages our customers to purchase their Forest River products from a local dealership whenever possible for the following reasons:

It is the goal of Forest River, Inc. that all of our RV owners fully enjoy the RV experience and that customer satisfaction meets or exceeds their expectations!

- 1) Forest River, Inc. dealers are independently owned and operated businesses so priority service and scheduling is at their discretion and is often provided to customers that purchased their unit at that dealership.
- 2) Purchasing locally allows customers to establish meaningful relationships with a dealer, enhancing the RV experience through assistance with product questions, user tips or RV regulations for your state or country, and much more!
- 3) Canadian customers must meet requirements to bring an RV purchased out of the country to their home. These requirements may involve additional inspections and certifications, taxes and fees. Your local Canadian Dealer is a professional at meeting these requirements.
- 4) Scheduling timely warranty repairs and adjustments through a local dealership provides far greater flexibility and convenience to you, the customer!

## Travel Easy™ Roadside Assistance

RVing is easier with Coachmen's Travel Easy™ Roadside Assistance provided FREE the first year of ownership to those who purchase a New Coachmen RV. Administered by Coach-Net, this service provides you with 24/7 operational, technical and emergency road service coverage. Also included is towing, fuel delivery, jump starts, lockout service, tire changes, mobile mechanic and unlimited technical assistance. Anywhere. Anytime. Travel Easy™ is the security of knowing that help is an easy phone call away.



## FREE One Year Membership - Coachmen Owners Association!

Coachmen is proud to sponsor the largest manufacturer sponsored camping club in North America ... Coachmen Owners' Association (COA). COA provides you a world of ways to enjoy your RV. This is FUN ON OVERDRIVE and provides: Free Trip Routing, Exciting Tours & Rallies, Free Campground Directory, Local/State Club Activities, Easy RVing Magazine Free, Theme Park Discounts, Fuel Discounts, Free onebigplanet® Memberships with discounts at 180,000 merchants and Much More! Every new Coachmen RV buyer is eligible for a 1 Year FREE membership in the Coachmen Owners' Association. It all adds up to an easy ownership experience!



### GVWR (Gross Vehicle Weight Rating):

The maximum permissible weight of the unit, including the unloaded vehicle weight (UVW) plus all fluids, cargo, optional equipment and accessories. For safety and product performance, do not exceed the GVWR.

### GCWR (Gross Combined Weight Rating):

The maximum total weight of the loaded unit, plus a tow vehicle. This includes the weight of both the unit and tow vehicle, fuel for each, all other fluids, cargo, occupants, optional equipment and accessories.

Important Note: All capacities are approximate, and all dimensions are nominal. Coachmen motorhomes are designed to allow for a wide variety of uses, extended trips with two people or short trips with multiple people. Accordingly, each unit allows ample room for sleeping, seating, fluids and cargo. While the customer is the beneficiary of this design, the customer also bears the responsibility to select the

proper combination of passengers, cargo, load, and tow vehicle without exceeding the chassis weight capabilities. Consumer may need additional braking capacity to tow loads greater than 1,000 pounds.

Seat belts should always be worn for passenger safety. Seat belts are provided at most locations to allow convenience in selecting which seat to occupy. However, it is not intended that all seating positions equipped with a seat belt may be occupied while the vehicle is in motion, without regard to other weight factors.

All Coachmen motorhomes are designed to ensure that the number of passengers allowed while the vehicle is in motion will always at least equal the stated sleeping capacity. Though extra seat belts may be provided, for your safety and the proper operation of your vehicle, limit your passengers to the number allowed by the Net Carrying Capacity of your vehicle.



# Coachmen®

A division of Forest River, Inc.

Coachmen RV, a Division of Forest River Inc.,  
A Berkshire Hathaway Company  
423 N. Main St., P.O. Box 30, Middlebury, IN 46540

To learn more about Coachmen RV and our products and see how Coachmen is making the easy life easier, visit [www.coachmenrv.com](http://www.coachmenrv.com)

All information contained in this brochure is believed to be accurate at the time of publication. However, during the model year, it may be necessary to make revisions and Coachmen reserves the right to make all such changes without notice, including prices, colors, materials, equipment and specifications as well as the addition of new models and the discontinuance of models shown in this brochure. Therefore, please consult with your Coachmen dealer and confirm the existence of any materials, design or specifications that are material to your purchase decision.

©Copyright 2012 Coachmen RV a Division of Forest River Inc - All Rights Reserved



Learn More  
Scan this barcode using a QR Reader on your smart phone to learn more about Forest River.



A Berkshire Hathaway company.