

SPORTSCOACH

CROSS COUNTRY

CLASS A DIESEL PUSHER MOTORHOME

CROSS COUNTRY

SPORTSCOACH





Exceptional Elegance In Design



A.



B.



C.



D.

Simply put, the Cross Country is exceptional elegance in design and value at a price that makes an RD possible! The Cross Country Diesel Pusher is the most affordable rear diesel in the market today – bar none! With all the amenities you need in the comfort and use of a motorhome, built on the Freightliner chassis, the Cross Country provides you with all the

advantages of a Rear Diesel Motorhome at the price that compares with some front engine gas motorhomes.

Feel the prestige of a Rear Diesel Motorhome as you confidently ride high with air ride suspension, air brakes, huge pass through exterior storage, panoramic views and the ride and handling that only a Rear Diesel Motorhome can provide.

A. The galley has the look and feel of a high-end kitchen. You'll appreciate the optional side by side residential refrigerator, Corian™ countertop with tile backsplash, raised panel cabinet doors and premium faucet with extendable sprayer.

B. The optional side by side residential refrigerator boasts french doors with built-in door

dispenser and 20 cubic feet of storage.

C. Comfortable "Dream Dinette" seating slides flat for extra sleeping space.

D. MCD Power Front Privacy Shade and manual side shades are standard in the drivers cockpit.



A.



B.



C.



D.



E.



F.

Inside the Cross Country, you will immediately find you don't have to add a lot of options as it already comes equipped with all the amenities of home. The other amazing feature is the true flat floor bedroom design, which eliminates the unnecessary climbing over the engine cover just to get in bed.

A. 26" LCD TV built into the bedroom overhead cabinets.

B. The 385 DS model features bunk beds that provide an added dose of fun via standard swivel-mount, dual-mount 15" LCD TVs with DVD. Talk about comfy movie times!

C. Our attention to detail and comfort extend to the bathroom where you'll find a porcelain toilet,

premium faucets and a spacious shower with a glass door. The medicine cabinet has a large vanity mirror with lights for an extra home-like touch.

D. Improved functionality and convenience with features like gas strut assisted lifts, that allow effortless access to extra under bed storage.

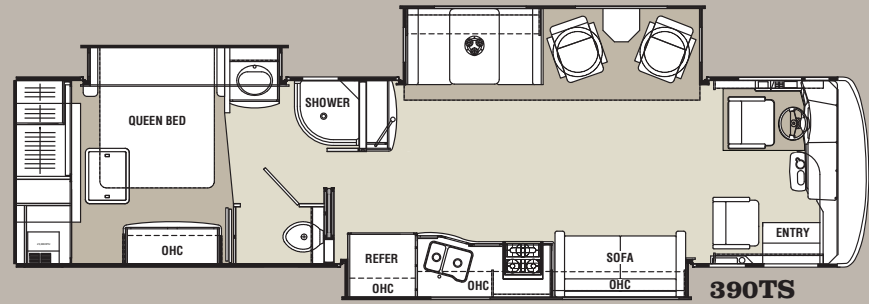
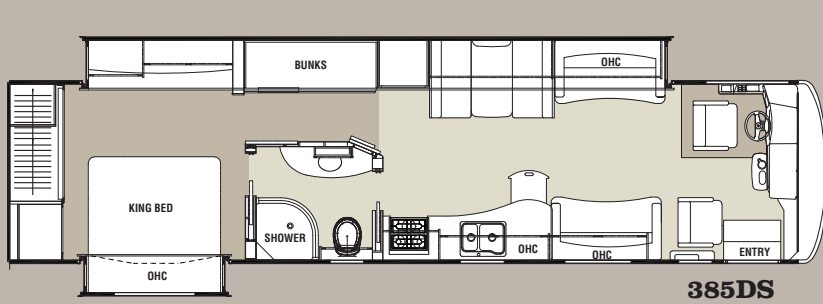
E. With the ceramic tile option, the toilet area is designed for ease of cleaning with the ceramic tile plumbing cover. The porcelain toilet is standard in every coach.

F. Everything about the interior of the bedroom is designed to wow and pamper — even the linen closet is designed with residential storage in mind.

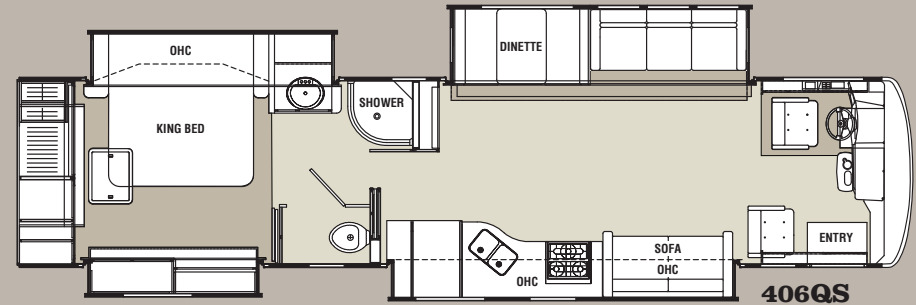
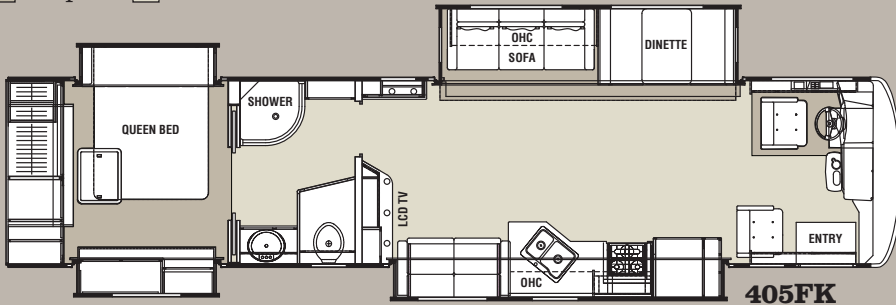
Tantalize Your Senses.



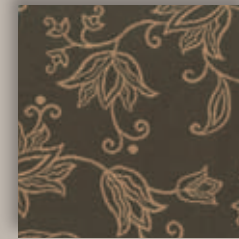
SPORTSCOACH CROSS COUNTRY CLASS A DIESEL PUSHER MOTORHOME FLOORPLANS



■ Carpet ■ Linoleum



- A.** Full basements with pass-through storage on a raised rail chassis.
- B.** No Mess™ termination and integrated Water Works™ control panel — filling and dumping has never been so easy!
- C.** The large, one-piece windshield plus the exclusive Sight Rite™ dash — that angles downward — provide a clear, unobstructed view of the road. Also, the easy-to-read gauges and handy controls create an intelligent, driver-friendly environment.
- D.** Standard ceramic tile stepwell included with Ceramic Tile option.
- E.** Rubber matting around the accelerator and brake pedal is accentuated by the optional ceramic tile, for a clean, sleek appearance



Keepsake Beige



Cherished Taupe



Cognac Maple



Glazed Cherry

SPORTSCOACH CROSS COUNTRY STANDARD AND OPTIONAL FEATURES

EXTERIOR/AUTOMOTIVE

- Defroster Fans
- Telescoping Tilt Steering Wheel
- Cruise Control
- Intermittent Wipers
- Dash Air Conditioning
- Exterior Mirrors with Heat & Remote
- Auxiliary Driving Lights
- Fuel Fills, Both Sides
- Fully Automatic Hydraulic Leveling Jacks
- Chassis Air Suspension and Hydraulic Air Brakes
- 340 HP ISB Cummins Rear Diesel Engine
- 6-Speed Allison 2500MH Automatic Transmission
- 22.5 Radial Tires w/ Chrome Wheel Inserts
- Deluxe Radius Entrance Door with Dead Bolt Lock
- Front and Rear Mud Flaps
- Power Entrance Steps-Double
- Gelcoat High Gloss Sidewalls
- Aluminum Side Swing Compartment Doors
- Front and Rear Fiberglass Caps
- Air Horn
- Rear Vision Camera With Color Monitor
- Roof Ladder
- 5,000 Lb Towing Hitch with 7 Way Plug
- Slide-Out Awnings (where applicable)
- Auxiliary Air Supply Hook-Ups

- Flush Floor Bedroom
- Pass Through Basement Storage
- Full Body Paint

INTERIOR AND DECOR

- Padded Vinyl Ceiling
- MCD Power Privacy Shade in Cockpit
- Manual MCD Cockpit Side Shades
- Raised Panel Hardwood Cabinet Doors Throughout
- Upgrade Vinyl Floors
- Heavy Duty Ball Bearing Drawer Guides Throughout
- Oil Rubbed Bronze Hardware and Fixtures
- Folding Step-Well Cover
- Radius Slider Windows-Safety Glass
- Deluxe Manual Driver and Passenger Seats
- Deluxe Window Treatments
- Faux Leather Sofa with Air Mattress
- Faux Leather Love Seat-Comfort Lounge (385 & 405)
- Deluxe Pivoting Euro Chair with Ottoman (390TS)
- Dream Dinette
- Fire Extinguisher
- 40" LCD TV Coach
- TV Antenna and Rotor Package
- Pre-Wired for Manual Satellite Dish
- Cable TV Jack

- LP Leak Alarm
- Smoke Detector
- Carbon Monoxide Detector
- Dash Radio- AM/FM CD
- Day/ Night Shades in Living Area
- Stackable Washer/Dryer Ready
- Three-Speed Roof Vent
- DVD Player Living Room

GALLEY

- 30" OTR Microwave
- 3 Burner Cook Top With Oven
- 8 Cubic Ft Double Door Refer
- Systems Monitor Panel
- Corian Kitchen Countertop
- Ceramic Tile Backsplash

SLEEPING

- Queen Bed (390TS - 405FK)
- King Bed - (385DS - 406QS)
- Deluxe Innerspring Mattress with 312 Coil with Pillowtop
- Bedspread, Pillow Shams
- Privacy Drape-Cab
- Residential Style Headboard (NA 385)
- Night Shades in Bedroom
- 26" LCD TV and DVD Player Bedroom
- 15" Bunk TV's (385 Only)

BATH AND WATER

- Whole Coach Water Filter
- Single Pedal Porcelain Toilet with Sprayer
- One-Piece ABS Surround and Shower Pan Textured Glass Shower Door
- Power Bath Vent
- Water Pump Switch at Termination
- Demand Water Pump
- Black Tank Flush System
- Skylight Over Shower

ELECTRIC/HEATING/AC

- Girard Tankless Water Heater
- 50 Amp Power Cord
- Two GFI Circuits (Kitchen & Bathroom)
- Outside Receptacle (DS)
- Halogen Lighting in Living Area
- Emergency Start Switch
- Coach and Chassis Battery Disconnect
- Auxiliary Batteries
- Patio Light
- 2 25,000 BTU E.I. Furnaces (NA 385)
- 34,000 BTU Furnace (385 Only)
- 13,500 BTU Ducted Roof A/C Front
- 13,500 BTU Ducted Roof A/C Rear
- Auto Transfer Switch
- 6.0 KW Diesel Generator (Onan)
- Fireplace (405 Only)

OPTIONS

- Buffet Table with 2 Chairs / 2 Folding (NA 385DS)
- 6 Way Power Drivers Seat
- 6 Way Power Driver/Passenger Seats
- Double Clear Coat for Full Body Paint
- Side By Side Refer (NA 385)
- Residential Refrigerator (NA 385DS)
- Cooktop with Convection Microwave
- Diamond Shield Protection
- 8.0 KW Diesel Generator
- Side View Camera's
- Dual Pane Windows
- Power Patio Awning
- Outside Entertainment Center with 32" TV (NA 385DS)
- Full Width Rear Rock Guard
- CSA Up-Fit
- CD-MVSA (Canadian Motor Vehicle Safety Act)
- 2000 Watt Inverter
- Ceramic Tile
- Slide-out Storage Tray
- (2) Euro Chairs with Ottoman (406QS Only)
- Sofa IPO Eurochairs (390TS Only)
- RV-ID
- Travel Easy Roadside Assistance

Class A Diesel	385DS	390TS	405FK	406QS
Wheelbase	242"	242"	266"	266"
GVWR	27,910 lbs.	27,910 lbs.	27,910 lbs.	27,910 lbs.
GCWR	32,910 lbs.	32,910 lbs.	32,910 lbs.	32,910 lbs.
Fuel Capacity	100 gal.	100 gal.	100 gal.	100 gal.
Exterior Length	39' 9"	39' 9"	41' 4"	41' 4"
Exterior Height	12' 4"	12' 4"	12' 4"	12' 4"
Exterior Width	102"	102"	102"	102"
Fresh Water	82 gal.	82 gal.	89 gal.	89 gal.
Gray Water	51 gal.	51 gal.	52 gal.	52 gal.
Black Water	46 gal.	46 gal.	46 gal.	46 gal.
Awning Size	17' 0"	17' 0"	20' 0"	20' 0"



SPORTSCOACH CROSS COUNTRY CLASS A DIESEL PUSHER MOTORHOME



Mojave Brown



Sahara Black



FREE ROADSIDE ASSISTANCE

Coachmen provides one year of free Travel Easy™ emergency roadside assistance for those who buy a new Coachmen RV. Administered by Coach-Net®, this service gives Coachmen owners 24/7 access to operational, technical and emergency road services, including towing, fuel delivery, jump starts, lockout service, tire changes, mobile mechanic and unlimited technical advice. So no matter where you go, we're ready to help!



BIG BENEFITS FOR NEW OWNERS

Owners club discounts and more — A free one-year membership in the Coachmen Owners Association comes with the purchase of any Coachmen product. This add-on value not only provides a host of travel services and campground discounts, but also a 24/7 online service that locates needed services while offering member savings at more than 180,000 merchants across the country. And, of course, the COA is an excellent way to share experiences with other Coachmen owners through rallies and caravans.

GVWR (Gross Vehicle Weight Rating):

The maximum permissible weight of the unit, including the unloaded vehicle weight (UVW) plus all fluids, cargo, optional equipment and accessories. For safety and product performance, do not exceed the GVWR.

GCWR (Gross Combined Weight Rating):

The maximum total weight of the loaded unit, plus a tow vehicle. This includes the weight of both the unit and tow vehicle, fuel for each, all other fluids, cargo, occupants, optional equipment and accessories.

Important Note: All capacities are approximate, and all dimensions are nominal. Coachmen motorhomes are designed to allow for a wide variety of uses, extended trips with two people or short trips with multiple people. Accordingly, each unit allows ample room for sleeping, seating, fluids and cargo. While the customer is the beneficiary of this design, the customer also bears the responsibility to select the proper combination

of passengers, cargo, load, and tow vehicle without exceeding the chassis weight capabilities. Consumer may need additional braking capacity to tow loads greater than 1,000 pounds.

Seat belts should always be worn for passenger safety. Seat belts are provided at most locations to allow convenience in selecting which seat to occupy. However, it is not intended that all seating positions equipped with a seat belt may be occupied while the vehicle is in motion, without regard to other weight factors.

All Coachmen motorhomes are designed to ensure that the number of passengers allowed while the vehicle is in motion will always at least equal the stated sleeping capacity. Though extra seat belts may be provided, for your safety and the proper operation of your vehicle, limit your passengers to the number allowed by the Net Carrying Capacity of your vehicle.



Coachmen RV, a Division of Forest River Inc.,
A Berkshire Hathaway Company
423 N. Main St., P.O. Box 30, Middlebury, IN 46540

To learn more about Coachmen RV and our products and see how Coachmen is making the easy life easier, visit www.coachmenrv.com



Forest River, Inc. encourages our customers to purchase their Forest River products from a local dealership whenever possible for the following reasons:

- 1) Forest River, Inc. dealers are independently owned and operated businesses so priority service and scheduling is at their discretion and is often provided to customers that purchased their unit at that dealership.
- 2) Purchasing locally allows customers to establish meaningful relationships with a dealer, enhancing the RV experience through assistance with product questions, user tips or RV regulations for your state or country, and much more!
- 3) Canadian customers must meet requirements to bring an RV purchased out of the country to their home. These requirements may involve additional inspections and certifications, taxes and fees. Your local Canadian Dealer is a professional at meeting these requirements.
- 4) Scheduling timely warranty repairs and adjustments through a local dealership provides far greater flexibility and convenience to you, the customer!

It is the goal of Forest River, Inc. that all of our RV owners fully enjoy the RV experience and that customer satisfaction meets or exceeds their expectations!

All information contained in this brochure is believed to be accurate at the time of publication. However, during the model year, it may be necessary to make revisions and Coachmen reserves the right to make all such changes without notice, including prices, colors, materials, equipment and specifications as well as the addition of new models and the discontinuance of models shown in this brochure. Therefore, please consult with your Coachmen dealer and confirm the existence of any materials, design or specifications that are material to your purchase decision.

©Copyright 2012 Coachmen RV a Division of Forest River Inc – All Rights Reserved



Learn More
Scan this barcode using a QR Reader on your smart phone to learn more about Forest River.



A Berkshire Hathaway company.

Your Cross Country Dealer