

COLORADO

Ready... Set... Go...
Colorado



2011 TRAVEL TRAILERS AND FIFTH WHEELS

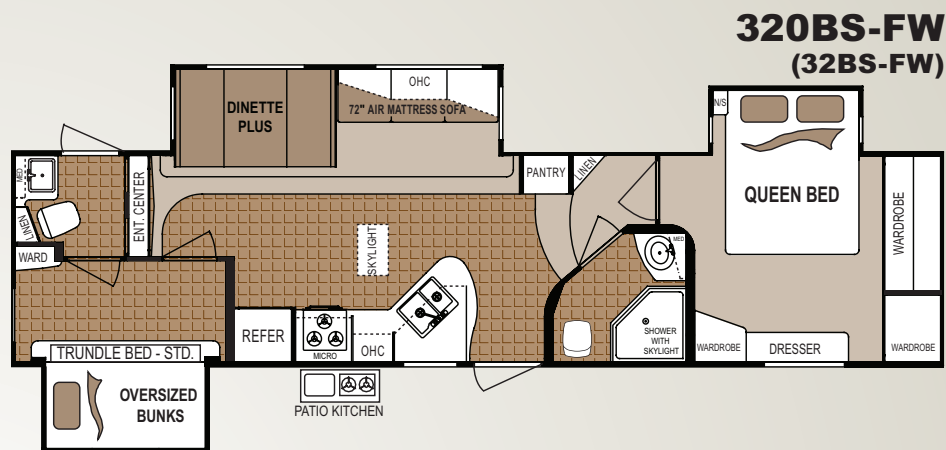
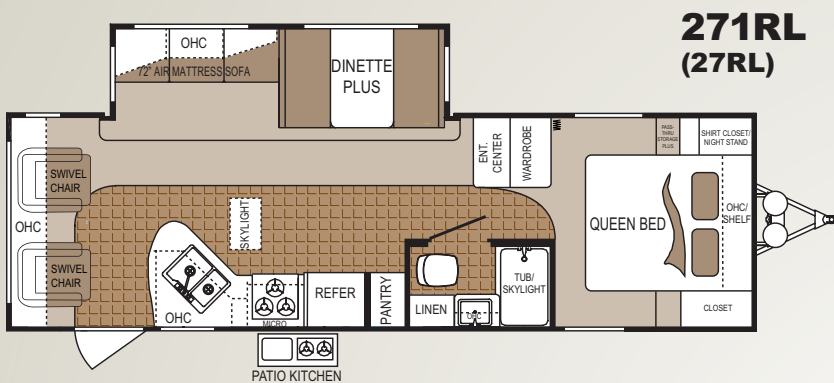
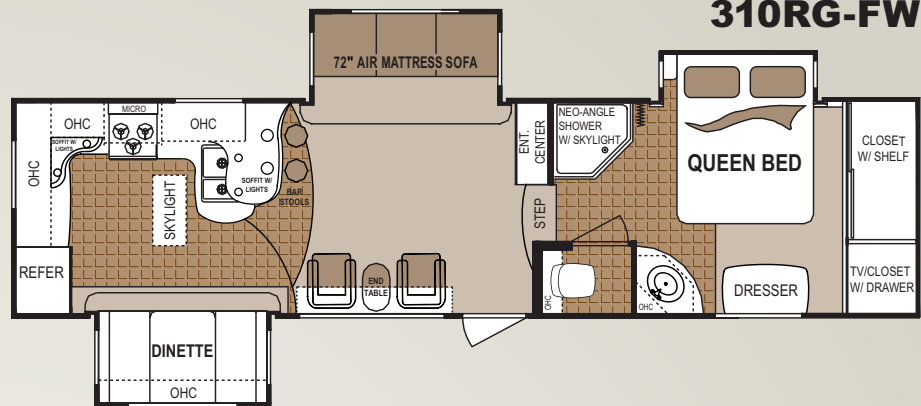
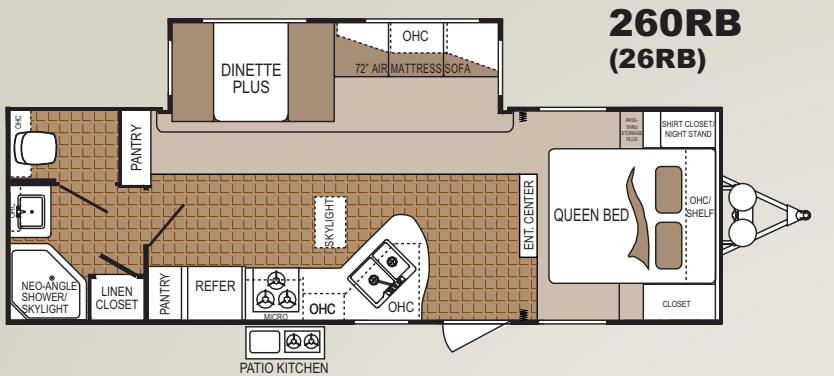


COLORADO

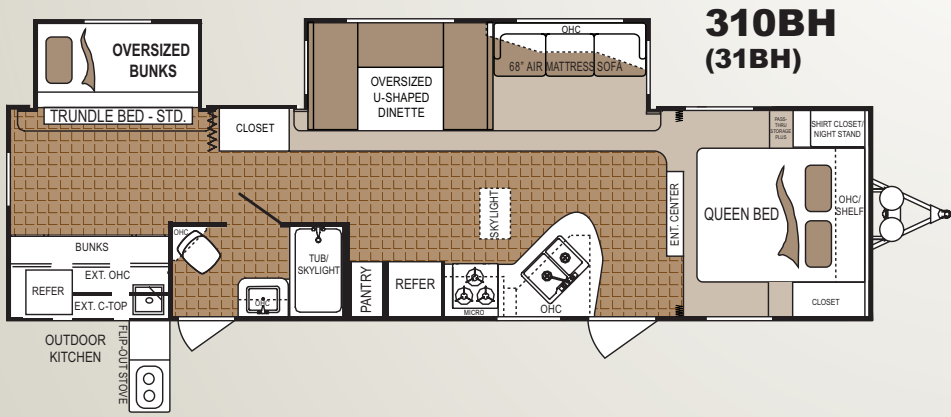
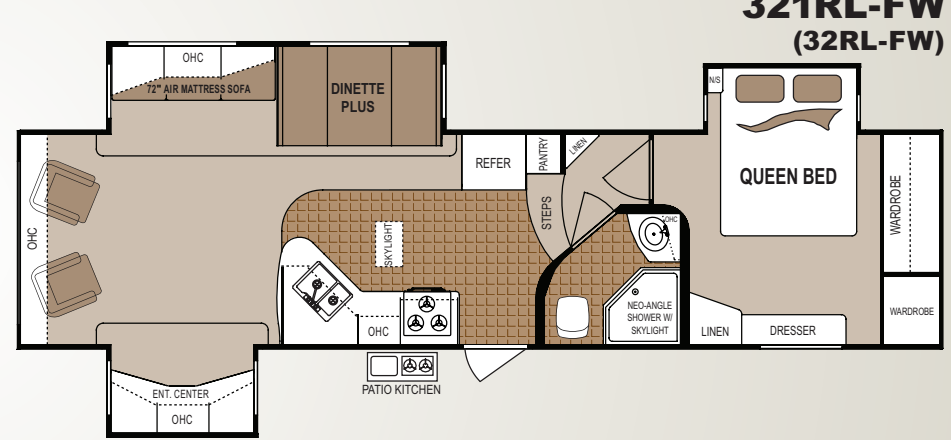
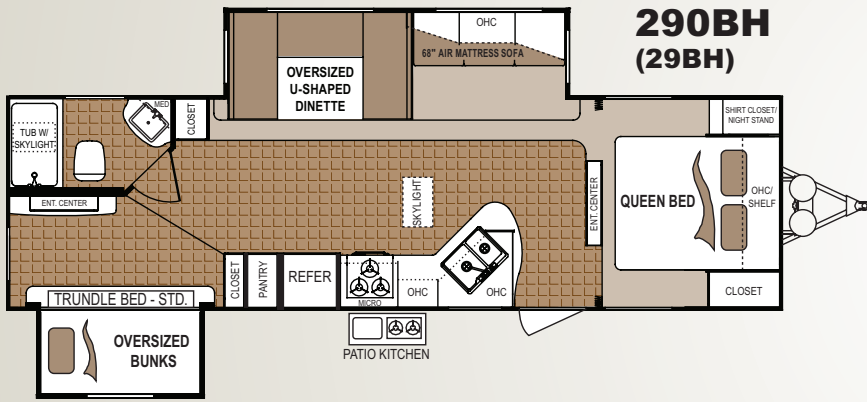
Ready ... Set ... Go ... Colorado

Travel Trailers

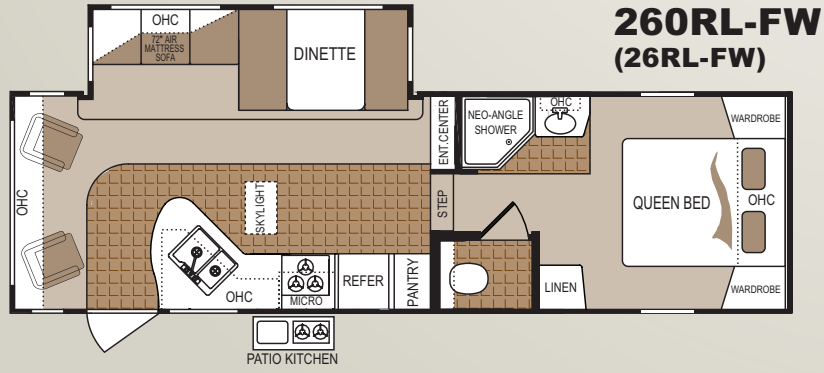
Mid High Profile Fifth Wheels



321RL FW



Mid Profile Fifth Wheels



FEATURES

- “ALUMA LAM” Construction
- “BODY ARMOR” Insulation Package
- “PATIO KITCHEN” Outside Kitchen
- “STORAGE SOLUTIONS” Cabinetry
- “MEDIA CENTER” Entertainment System
- “QUICK START” Appliance Package
- COLORADO QUICK CAMPING PACKAGE**
- “INTERIOR COMMAND CENTER”
- “EASY HITCH” Front Cap (FW’s)

WEIGHTS & SPECIFICATIONS

2011 Model Name	Hitch (lbs)	Unload Weight (lbs)	Cargo Capacity (lbs)	Overall Height	Overall Length	Fresh Water (gal)	Grey Water (gal)	Black Water (gal)	Furnace Size BTU	Tire Size and Ply Rating
260RB	818	6616	3064	11' 0"	29' 9"	52	42	42	30,000	ST225/75R15(D)
271RL	788	6802	2878	10' 11"	30' 11"	52	42	42	30,000	ST225/75R15(D)
290BH	958	7402	2278	11' 0"	32' 10"	52	84	42	30,000	ST225/75R15(D)
310BH	960	8282	1934	11' 2"	35' 7"	52	84	42	30,000	ST225/75R15(D)
260RL-FW	1442	7488	3072	11' 6"	30' 5"	52	42	42	30,000	ST225/75R15(D)
310RG-FW	N/A	N/A	N/A	N/A	N/A	52	42	42	30,000	ST225/75R15(D)
320BS-FW	1790	9810	2382	11' 10"	36' 9"	52	84	84	34,000	ST225/75R15(D)
321RL-FW	2026	9210	2982	11' 10"	35' 9"	52	84	42	34,000	ST225/75R15(D)

STANDARD AND OPTIONAL FEATURES

Colorado Value Package

STORAGE SOLUTIONS Cabinetry

- Raised Panel Hardwood Cherry Cabinets Doors and Drawers
- Pre-Drilled, Screwed and Glued Residential Hardwood Cabinet Construction
- Full Height Pantry, Full Access Cabinets, Large Drawers
- Residential 60/40 Galley Sink With Cover
- Large Pots and Pans Drawer
- Built-In Countertop Extension
- Dedicated Trash Storage Area
- Brushed Nickel Hardware and Fixtures

MEDIA CENTER Premium Entertainment System

- 20", 26", 32" LCD HD Flat Screen TV - (Per Floorplans)
- AM/FM/CD/DVD
- Mp3 & iPod Player Hookup on Stereo
- 4 Int & 2 Ext Speakers with Zone Switch
- Satellite Prep, Cable Jack & TV Antenna with Power Booster
- TV Cable/Electrical Hookups under Awning

QUICK START Appliance Package

- Oven with Three-Burner Cook Top
- Residential Microwave with Turntable
- 6 Cubic Foot Double Door Refrigerator
- 6 Gal. Gas/Electric/DSI Water Heater W/Bypass
- 13,500 Btu Ducted Air Conditioner
- Forced Air Heating System
- Dual Control Wall Mount Thermostat

Other Interior Features

- Skylight over Galley
- Oversized or U-Shaped Dinette (See Floor Plans)
- Day And Night Shades in Living Area
- Swivel Rockers (See Floor Plan)
- Decorative Hardwood Slide-Out Fascia
- Laundry Chute Most Models
- Porcelain Foot Flush Toilet
- Residential Carpet with Pad
- Premium Linoleum Floor Covering

COLORADO QUICK CAMPING PACKAGE

- Power Front Landing Gear (Fifth Wheels)
- Power Patio Awning
- Exterior Patio Light
- Easy Hitch Front Cap

- Interior Command Center
- Patio Kitchen

EASY HITCH FRONT CAP (Fifth Wheels)

Includes:

- Front Cap with Expanded Turning Radius For Short Bed Trucks
- Back Up Mirror in Front Cap
- LED Docking Lights

INTERIOR COMMAND CENTER

Includes:

- Convenient Location for Main Switches and Monitor Panel

PATIO KITCHEN

Includes:

- 2 Burner Outdoor Stove
- Wash Basin
- Adjustable Water Sprayer, Cutting Board
- Hot and Cold Water
- LP Quick Connect

Standard Features

Body/Coach Construction

ALUMA LAM Construction Package

- 6 Sided Welded Aluminum Cage Construction
- Walls Floor Fully Insulated and Laminated
- 2 1/8" Vacuum Bonded One-Piece Floor
- Aluminum 5" Truss Style Walk-On Roof
- 3/8" Roof Decking
- EPDM Rubber Roof with 12 Year Warranty
- Gel Coat Filon Fiberglass Exterior

BODY ARMOR Weather Insulation Package

- Fully Enclosed and Heated Underbelly
- Heated and Enclosed Holding Tanks
- R-14 Fiberglass Roof Insulation

Exterior Features

- Dark Tint Safety Glass Windows
- Extended Hitch Pin (Fifth Wheels)
- Radius Corner Entry Door with Dead Bolt Lock
- Full View Screen Door
- Pivoting Entry Assist Handle
- 12V Electric Slideout System with Triple-Seal
- Steel I-Beam Powder Coated Chassis
- Triple Entry Steps with Radius Edges
- Molded Fender Skirts
- Exterior Patio Light

- Exterior Hitch Light
- Cable/Satellite Prep
- Drip Rail Gutter with Extension Spouts
- Dual 30 pound LP Bottles
- Sewer Hose Storage
- Black Tank Flush
- Easy Lube Hubs
- 6 Lug - 15" Wheels
- 4 Wheel Electric Drum Brakes
- LP Quick Connect

Electrical, Plumbing, & Lighting

- 30 Amp Electrical Service
- 65 Amp Power Converter with Battery Charger
- 110v GFI Receptacles
- Decorative Wall Sconces in Bedroom (Bed Slide Models)
- Decorative Ceiling Light at Dinette
- 12V water Pump
- Premium PEX Polyethylene Water Lines
- Hot and Cold Water Low Point Drains
- Water Heater by Pass
- Range hood with 12V Light and Fan
- Monitor Panel
- Smoke Detector
- Carbon Monoxide Detector

Climate Control

- 30K to 34K Forced Air Furnace (See Floorplans)
- 13.5K Air Conditioner with Quick Cool Vent
- Ceiling Ducted AC Vents
- Insulated and Foil Wrapped AC Ducting
- Fire Extinguisher

Bath Area

- Residential Tubs and Showers
- Tub Surround
- Glass Shower Door (Neo-Angle Shower)
- Deluxe Shower Base and Surround
- Medicine Cabinet with Mirror
- Power Roof Vent
- Toilet Tissue Holder
- Towel Hooks and Bar

Bedroom Area

- Queen Innerspring Mattress
- Designer Bedspread, Headboard and Window Coverings
- Below Bed Storage with Gas Struts
- Pleated Night Shades

Optional Features

Colorado Value Package - Mandatory

Power Package (Mandatory)

- Power Front and Rear Stabilizer Jacks & Wireless Remote Control
- (Remote Controls The Slide Room, Front Jacks (TT), Front Landing Gear (FW), Rear Jacks Power Awning, Patio Light)*

Hide-A-Bed Sofa with Magic Air Sleeper (Mandatory)

Colorado Quick Camping Package (Mandatory)

Other Options - All Models

- Spare Tire/Carrier/Cover
- Free Standing Dinette with Four Chairs
- 15K BTU Living Room AC - IPO 13K BTU
- Aluminum Rims
- Twin Convert-A-Lounge in Bunk Area (31BH, 29BH, 32BS)
- Triple Play Convert-A-Lounge (310BH & 320BS)
- Hide-A-Bed Sofa in Bunk Models (310BH & 320BS)
- 8 Cubic Foot Double Door Refer
- 10 Gallon Gas/Electric DSI Water Heater with Rear Ladder
- Hi Gloss Gel Coat Fiberglass Exterior

Options - Mid High Fifth Wheels Only

- 50 Amp Service + Prep for Bedroom AC
- 16 Aluminum Rims with Radial Tires
- 2nd Entry Door with Step (Required) (32DBS)

Some features listed above may be part of a value package - Contact your local dealer for the details

Your Local Dealer

www.colorado-rv.com

Dutchmen Manufacturing, Inc. • 2164 Caragana Court • Goshen, Indiana 46526

Sales: 574.537.0600 Fax: 574.975.0626