

ALUMA

www.alumaklm.com

Aluminum Trailers to fit your every need.

Quality
BUILT-IN



**5 YEAR
WARRANTY**

5 Year Warranty ■ Lightweight ■ Maintenance Free ■ Durable Construction



**Go ahead. Hit
the road, Jack.**

Our aluminum trailers get you
where you want to go, with what
you want when you get there.

Because getting there
doesn't have to be half
the battle.



Aluminum Trailers

101 East Seneca
Bancroft, IA 50517
515-885-2398 Fax: 515-885-2592
www.alumaklm.com

ATV Trailers	4
Motorcycle Trailers	6
Enclosed Trailers	8
Enclosed Motorcycle Trailers . .	10
Flatbed Trailers	11
Snowmobile Trailers	17
Truck Beds	20



Quality
BUILT-IN

Tough AND Lightweight

Aluminum trailers to fit your every need.



Our aluminum trailers beat the competition hands down. Both lightweight and maintenance free, all of our products come with a five year warranty.

**5 YEAR
WARRANTY**

Durable ■ Rust Free ■ Rivetless Side Panels ■ Many Color Options

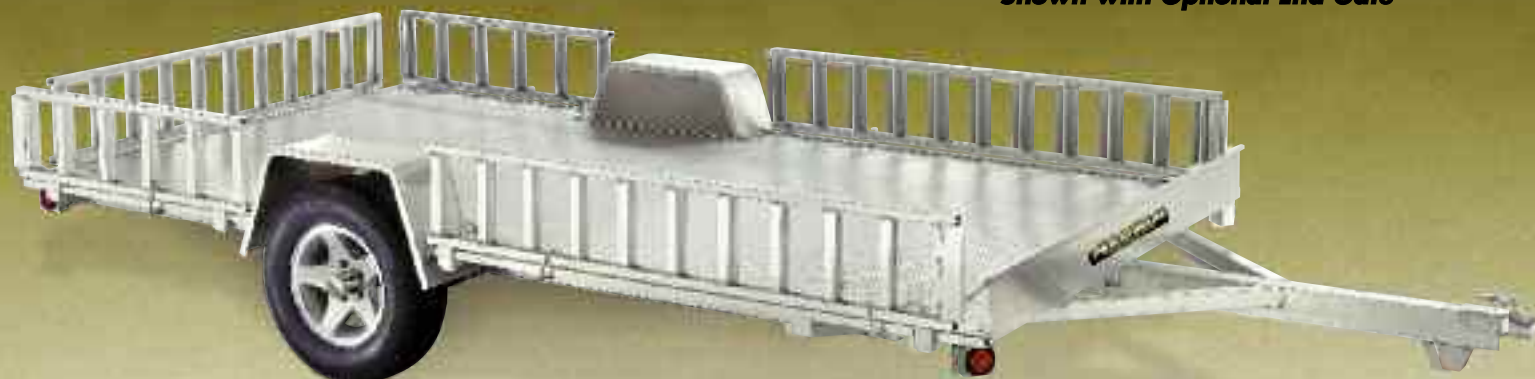
Aluminum wheels come standard on most of our trailers.

Aluma's
special features make our aluminum trailers a great investment.



**5 YEAR
WARRANTY**

A212 ATV Trailer
Shown with Optional End Gate



Special Feature—Removable end and side gates convert to ramps for easy loading of ATVs.

ATV TRAILERS		
	A212	A315
Overall Width	86"	93"
In Between Fenders	64"	73"
Overall Length	189"	246"
Bed Width	82"	89"
Bed Length	12'	15'
Bed Height	18"	18"
Tongue Height	16"	16"
Fender Height	9" height from bed	9" height from bed
Weight	560#	700#
Rubber Torsion AX Quantity	3000# - no brake 5 year warranty	3500# - no brake rated @2990#
Tire Size	14" Alum. Star Wheel	14" Alum. Star Wheel
Retaining Bumper	6" front	6" front
Tie Down Loops	8	8
Ramps	4	4
Lighting	DOT lighting package	DOT lighting package
Safety Chains	yes	yes



A315 ATV Trailer

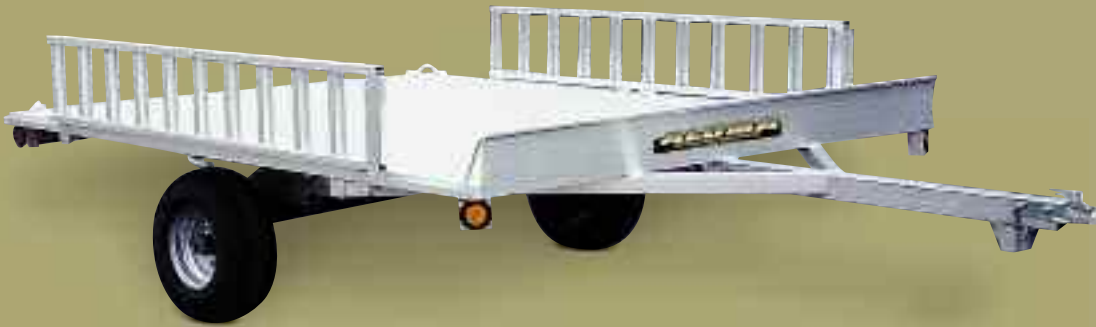
**Count on ALUMA
trailers to get you on
the road to adventure
quickly and reliably.**

Quality
BUILT-IN

A8816 ATV Trailer



A888 ATV Trailer



5
YEAR
Warranty

ATV TRAILERS

STANDARD FEATURES

	A888	A8812	A8816
Overall Width	88"	88"	88"
Overall Length	145"	199"	243"
Bed Width	88"	88"	88"
Bed Length	100"	12'10"	16'6"
Bed Height	22"	24"	24"
Tongue Height	17"	17"	17"
Weight	400#	570#	760#
Rubber Torsion AX Quantity	2200# - no brake 5 year warranty	1-3500#- no brake Rated at 2990#	2-2200# - no brake 5 year warranty
Tire Size	Silver Wheel 10"	Silver Wheel 10"	Silver Wheel 10"
Retaining Bumper	6" front	6" front	6" front
Tie Down Loops	6	8	10
Ramps	2	4	4
Lighting	DOT lighting package	DOT lighting package	DOT lighting package
Safety Chains	yes	yes	yes
Swivel Tongue Jack	option	option	yes



**Load up your favorite
toy and get OUT there.**

Aluminum Motorcycle Trailers

MC210 Motorcycle Trailer



MOTORCYCLE TRAILERS

	MC10	MC210	MC1F	TK1	MC2F
Overall Width	74 1/2"	101 1/2"	74 1/2"	86"	95 1/2"
Overall Length	158"	161"	125"	169"	125"
Bed Width	51"	77"	51"	63"	72"
Bed Length	125"	134 1/2"	106"	119"	106"
Bed Height	16"	16"	16"	16"	16"
Weight	390#	540#	380#	520#	520#
Rubber Torsion AX Quantity	2000#- no brake 5 year warranty	3000#- no brake 5 year warranty	2000#-no brake 5 year warranty	3000#- no brake 5 year warranty	3000#- no brake 5 year warranty
Alum. Star Wheel	13"	14"	13"	14"	14"
Tire Capacity	1360#	1760#	1360#	1760#	1760#
Tie Down Loops	4	8-Stainless Steel Tie Downs	4	4-Stainless Steel Tie Downs	5 1-Stainless Steel Tie Down
Ramps	45"W x 45 1/2"L	45"W x 45 1/2"L	27 1/2"W x 47 1/2"L	57"W x 45 1/2"L	27"W x 56"L
Lighting	DOT lighting package	DOT lighting package	DOT lighting package	DOT lighting package	DOT lighting package
Safety Chains	yes	yes	yes	yes	yes
Motorcycle Bracket	1-3'	2-3'	1-3'	1-3'	2-3'
Aluminum Salt Shield	yes	yes	yes	yes	yes

Quality
BUILT-IN

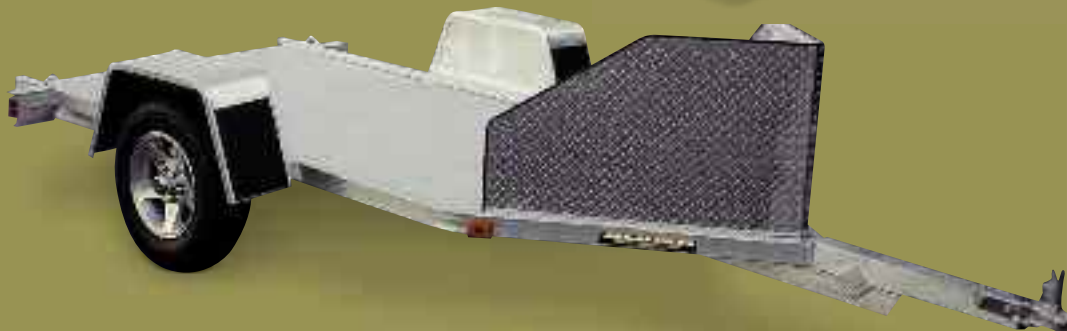
**MC2F Folding
Motorcycle Trailer**
(95" upright)



**MC1F Folding
Motorcycle Trailer**
(95" upright)



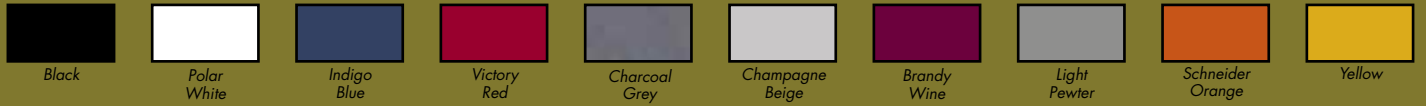
MC10 Motorcycle Trailer



MCTXL Trailer



MCT Trailer



TK1 Motorcycle Trailer



Shown with Optional Swivel Tongue Jack

MOTORCYCLE TRAILERS

STANDARD FEATURES

	MCT	MCTXL
Overall Width	45"	45"
Overall Length	85"	97"
Bed Width	27"	27"
Bed Length	45"	57"
Bed Height	16"	16"
Weight	200#	225#
Rubber Torsion AX Quantity	600#-no brake 5 year warranty	600#-no brake 5 year warranty
Alum. Star Wheel	12"	12"
Tire Capacity	780#	780#
Lighting	LED lighting package	LED lighting package
Safety Chains	yes	yes

The Ultimate—Tow it in Style



Rivetless side panels ■ **Lightweight** ■ **Aluminum Floor**



Precision crafted all aluminum welded roof truss construction • Crossmembers 16" on center



AE46



Strong, lightweight all aluminum frame



Superior fit and finish white-lined interior (optional)



Effortless ramp door mechanism (optional)



Electric Interior Dome lights



Stainless Steel Tie Rings



Aluminum Wheels (Standard)



**So many options—
Choose from a variety of
exterior aluminum colors**

**5 YEAR
WARRANTY**



		AE46	AE58	AE510	AE610	AE612	AE612TA	AE614TA	AE616TA	AE618TA	AE710	AE712	AE712TA	AE714TA	AE716TA	AE718TA	AE814TA	AE816TA	AE818TA	AE820TA
OVERALL	Length	120"	149"	173"	173"	197"	197"	221"	245"	269"	173"	197"	197"	221"	245"	269"	221"	245"	269"	293"
	Width	64"	81"	81"	93"	93"	93"	93"	93"	93"	101"	101"	101"	101"	101"	101"	101"	101"	101"	101"
	Height	34"	91"	91"	91"	91"	91"	91"	91"	91"	91"	91"	91"	91"	91"	91"	94"	94"	94"	94"
INTERIOR	Length	72"	95"	119"	119"	143"	143"	167"	191"	215"	119"	143"	143"	167"	191"	215"	167"	191"	215"	239"
	Width	48"	57.5"	57.5"	69.5"	69.5"	69.5"	69.5"	69.5"	69.5"	81.5"	81.5"	81.5"	81.5"	81.5"	81.5"	93.5"	93.5"	93.5"	93.5"
	Height	21"	72"	72"	72"	72"	72"	72"	72"	72"	72"	72"	72"	72"	72"	72"	72"	72"	72"	72"
Rubber Torsion AX Quantity	1 5 yr War.	1 5 yr War.	1 5 yr War.	1 5 yr War.	1 5 yr War.	2 5 yr War.	2 5 yr War.	2 5 yr War.	2 5 yr War.	2 5 yr War.	1 5 yr War.	1 5 yr War.	2 5 yr War.	2 5 yr War.	2 5 yr War.	2 5 yr War.	2 5 yr War.	2 5 yr War.	2 5 yr War.	2 5 yr War.
Alum. Star Wheels	13"	14"	14"	14"	14"	14"	14"	14"	14"	14"	14"	14"	14"	14"	14"	14"	14"	14"	14"	14"
Hitch Ball Size	2"	2"	2"	2"	2"	2"	2"	2"	2"	2"	2"	2"	2"	2"	2"	2"	2"	2"	2 5/16"	2 5/16"
Hitch Height	17"	17"	17"	17"	17"	17"	17"	17"	17"	17"	17"	17"	17"	17"	17"	17"	17"	17"	17"	17"
Curb Weight	340	700	750	830	890	1450	1550	1700	1800	1140	1290	1400	1500	1700	1850	1800	1900	2050	2200	
GVWR	1200	2990	2990	2990	2990	7000	7000	7000	7000	2990	2990	7000	7000	7000	7000	7000	7000	7000	7000	
Payload Capacity	860	2290	2240	2160	2100	5550	5450	5300	5200	1850	1700	5600	5500	5300	5150	5200	5100	4950	4800	
REAR DOORS	Standard	N/A	Double	Double	Double	Double	Double	Double	Double	Double	Double	Double	Double	Double	Double	Double	Double	Double	Double	Double
	Optional	N/A	Ramp	Ramp	Ramp	Ramp	Ramp	Ramp	Ramp	Ramp	Ramp	Ramp	Ramp	Ramp	Ramp	Ramp	Ramp	Ramp	Ramp	Ramp
Rear Ramp with Spring Assist	N/A	Yes	Yes	Yes	Yes	Yes	Yes	Yes	Yes	Yes	Yes	Yes	Yes	Yes	Yes	Yes	Yes	Yes	Yes	Yes
REAR OPENING	Width	N/A	52"	52"	64"	64"	64"	64"	64"	64"	76"	76"	76"	76"	76"	76"	88"	88"	88"	88"
	Height	N/A	67.5"	67.5"	67.5"	67.5"	67.5"	67.5"	67.5"	67.5"	67.5"	67.5"	67.5"	67.5"	67.5"	67.5"	67.5"	67.5"	67.5"	67.5"
Aluminum Skin	.030"	.030"	.030"	.030"	.030"	.030"	.030"	.030"	.030"	.030"	.030"	.030"	.030"	.030"	.030"	.030"	.030"	.030"	.030"	.030"
Interior Walls	N/A	4' Plywood	4' Plywood	4' Plywood	4' Plywood	4' Plywood	4' Plywood	4' Plywood	4' Plywood	4' Plywood	4' Plywood	4' Plywood	4' Plywood	4' Plywood	4' Plywood	4' Plywood	4' Plywood	4' Plywood	4' Plywood	
Floor	Extruded Aluminum	Extruded Aluminum	Extruded Aluminum	Extruded Aluminum	Extruded Aluminum	Extruded Aluminum	Extruded Aluminum	Extruded Aluminum	Extruded Aluminum	Extruded Aluminum	Extruded Aluminum	Extruded Aluminum	Extruded Aluminum	Extruded Aluminum	Extruded Aluminum	Extruded Aluminum	Extruded Aluminum	Extruded Aluminum	Extruded Aluminum	
Swivel Jack	Standard	Standard	Standard	Standard	Standard	Standard	Standard	Standard	Standard	Standard	Standard	Standard	Standard	Standard	Standard	Standard	Standard	Standard	Standard	
Lighting	LED	LED	LED	LED	LED	LED	LED	LED	LED	LED	LED	LED	LED	LED	LED	LED	LED	LED	LED	

LED Lights - Standard on all Enclosed Trailers

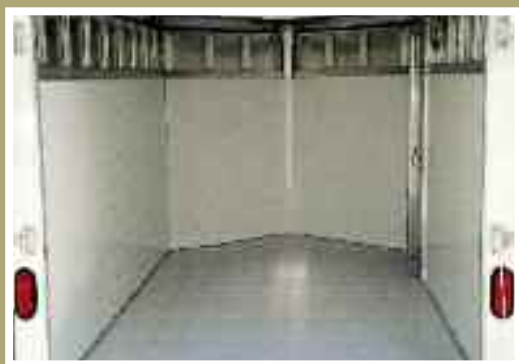
Enclosed Motorcycle Trailers



**Single Axle
Motorcycle Trailer**

Optional 24" Anodized trim

**Tandem Axle
Motorcycle Trailer**
Optional 24" Anodized trim



Interior of Motorcycle Package
*(Tie-downs & motorcycle
brackets not shown)*

STANDARD FEATURES

- 6' Interior height
- Torsion axle
- Easy lube hubs
- 5-star aluminum wheels,
5-4.5 BHP
- Extruded aluminum floor
- Rivetless exterior
aluminum skin
- Interior 4' white lining
- Aluminum rear ramp door—
Cable assist
- One-piece aluminum roof
- 2" coupler with safety chains
- Swivel tongue jack
- DOT lighting package
- 32" side door with handle
- V-Front
- Rock guard
- Dome light with switch
- Crank-up roof vent or
(2) side vents
- Rear stabilizer legs (7 wides)
- (4) or (6) Flush mount tie rings
or
- (1) or (2) 3' motorcycle brackets

Available in 5, 6, & 7' Widths

Model 486 Trailer



Model 548 Trailer



Model 6310 Trailer
Optional Bi-fold Tailgate



Model 6314 Trailer
Optional Bi-fold Tailgate & Swivel Tongue Jack

		MODELS 486-720								
		486	548	5410	5416	638	6310	6314	6316	7210
STANDARD FEATURES	Width x Length	4' x 6'	54" x 96"	54" x 120"	54" x 192"	63" x 96"	63" x 120"	63" x 14'	63" x 192"	72" x 120"
	Bed Height	13.5"	13.5"	13.5"	14.5"	13.5"	13.5"	13.5"	14.5"	14.5"
	Weight	245#	320#	360#	560#	345#	385#	500#	600#	420#
	GVWR	1200#	2000#	2000#	2990#	2000#	2000#	2000#	2990#	2200#
	Aluminum Star Wheel	12" Silver Mod	13" Aluminum	13" Aluminum	13" Aluminum	13" Aluminum	13" Aluminum	13" Aluminum	13" Aluminum	13" Aluminum
	Torsion Axle	1-No Brake 5 Year Guarantee	1-No Brake 5 Year Guarantee	1-No Brake 5 Year Guarantee	2-No Brake 5 Year Guarantee	1-No Brake 5 Year Guarantee	1-No Brake 5 Year Guarantee	1-No Brake 5 Year Guarantee	2-No Brake 5 Year Guarantee	1-No Brake 5 Year Guarantee
	Full Width Tailgate	Aluminum	Aluminum	Aluminum	Aluminum	Aluminum	Aluminum	Aluminum	Aluminum	Aluminum
	Side Stake Pockets	4 Total 2 per Side	4 Total 2 per Side	4 Total 2 per Side	6 Total 3 per Side	4 Total 2 per Side	4 Total 2 per Side	6 Total 3 per Side	6 Total 3 per Side	4 Total 2 per Side
	Aluminum Tongue	3" Formed 2" Coupler	3" Formed 2" Coupler	3" Formed 2" Coupler	A-Frame 2" Coupler	3" Formed 2" Coupler	3" Formed 2" Coupler	A-Frame 2" Coupler	A-Frame 2" Coupler	3" Formed 2" Coupler
	Swivel Tongue Jack	Optional	Optional	Optional	800# Capacity	Optional	Optional	Optional	800# Capacity	Optional

Aluminum Flatbed Trailers

Model 7712H Trailer
Optional Bi-fold Tailgate & Dove Tail



**5 YEAR
WARRANTY**

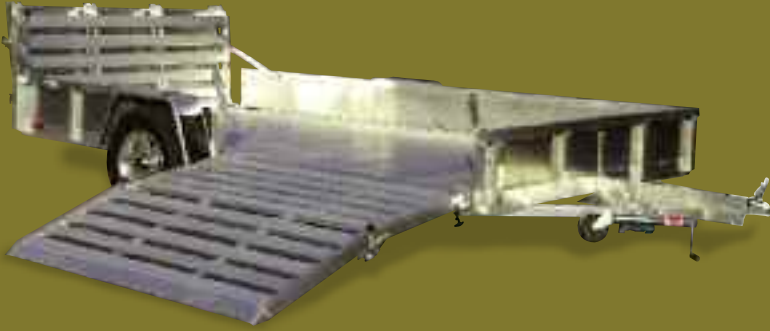
Quality
BUILT-IN

Model 6810 Trailer
Optional Side Rack Set & Bi-fold Tailgate



Model 8113 Trailer

Bifold Gates & Sides Standard



MODELS 7710-8113

STANDARD FEATURES

	7710	7710H	7712	7712H	7814ST	8113
Width x Length	77" x 123"	77" x 123"	77" x 142"	77" x 142"	78" x 14'	81" x 153"
Bed Height	14"	14.5"	14"	14.5"	15"	14.5"
Weight	525#	595#	570#	620#	900#	820#
GVWR	2200#	2990#	2200#	2990#	2990#	2990#
Aluminum Star Wheel	13"	14"	13"	14"	14"	14"
Torsion Axle	1-No Brake 5 Year Guarantee	1-No Brake 5 Year Guarantee	1-No Brake 5 Year Guarantee	1-No Brake 5 Year Guarantee	1-No Brake 5 Year Guarantee	1-No Brake 5 Year Guarantee
Full Width Tailgate	Aluminum	Aluminum	Aluminum	Aluminum	Aluminum	2-Aluminum
Side Stake Pockets	4 Total 2 per Side	4 Total 2 per Side	4 Total 2 per Side	4 Total 2 per Side	6 Total 3 per Side	N/A
Aluminum Tongue	A-Frame 2" Coupler	A-Frame 2" Coupler	A-Frame 2" Coupler	A-Frame 2" Coupler	A-Frame 2" Coupler	A-Frame 2" Coupler
Swivel Tongue Jack	Standard	Standard	Standard	Standard	Standard	Standard

**5 YEAR
WARRANTY**

Model 6310H Trailer w/optional bi-fold tailgate



MODELS 6810-7210H

STANDARD FEATURES

	6810	6310H	7210H
Width x Length	68" x 117"	62.5" x 120"	72" x 120"
Bed Height	14.5"	14.5"	14.5"
Weight	440#	460#	500#
GVWR	2200#	2990#	2990#
Aluminum Star Wheel	13" Aluminum	14" Aluminum	14" Aluminum
Torsion Axle	1-No Brake 5 Year Guarantee	1-No Brake 5 Year Guarantee	1-No Brake 5 Year Guarantee
Full Width Tailgate	Aluminum	Aluminum	Aluminum
Side Stake Pockets	4 Total 2 per Side	4 Total 2 per Side	4 Total 2 per Side
Aluminum Tongue	A-Frame 2" Coupler	A-Frame 2" Coupler	A-Frame 2" Coupler
Swivel Tongue Jack	Optional	Optional	Optional

Aluminum Flatbed Trailers

Model 7800



**5 YEAR
WARRANTY**

Tandem Axle Trailers

MODELS 7812-7818

STANDARD FEATURES

	7812	7814	7816	7818
Width x Length	78" x 12'	78" x 14'	78" x 16'	78" x 18'
Bed Height	15"	15"	15"	15"
Weight	900#	1000#	1050#	1100#
GVWR	7000#	7000#	7000#	7000#
Aluminum Star Wheel	14"	14"	14"	14"
Torsion Axle	2-Brake 5 Year Guarantee	2-Brake 5 Year Guarantee	2-Brake 5 Year Guarantee	2-Brake 5 Year Guarantee
Fenders	Aluminum; Removable	Aluminum; Removable	Aluminum; Removable	Aluminum; Removable
Side Stake Pockets	4 Total 2 per Side	6 Total 3 per Side	6 Total 3 per Side	6 Total 3 per Side
Aluminum Tongue	A-Frame 2" Coupler	A-Frame 2" Coupler	A-Frame 2" Coupler	A-Frame 2" Coupler
Swivel Tongue Jack	1200# Capacity	1200# Capacity	1200# Capacity	1200# Capacity
Breakaway Switch w/Battery	Yes	Yes	Yes	Yes
Aluminum Rear Stabilizer Jacks	2-1 per Side	2-1 per Side	2-1 per Side	2-1 per Side

OPTIONAL FEATURES



**Aluminum
Rock Guard
All Models**



**Stainless Steel
Recessed
Tie Rings
All Models**



**Motorcycle
Brackets
All Models**



**Bi-fold Tailgate
All Models**



**Tongue Handle
All Models**



**Front Storage Box
641-7800-8200
Series**

Quality
BUILT-IN



Model 8200

Built to last.

Tandem Axle Trailers

MODELS 8212-8222

STANDARD FEATURES

	8212	8214	8216	8218	8220	8222
Width x Length	82" x 12'	82" x 14'	82" x 16'	82" x 18'	82" x 20'	82" x 22'
Bed Height	17"	17"	17"	17"	17"	17"
Weight	1180#	1230#	1280#	1350#	1500#	1650#
GVWR	7000#	7000#	7000#	7000#	7000#	7000#
Aluminum Star Wheel	14"	14"	14"	14"	14"	14"
Torsion Axle	2-Brake 5 Year Guarantee	2-Brake 5 Year Guarantee	2-Brake 5 Year Guarantee	2-Brake 5 Year Guarantee	2-Brake 5 Year Guarantee	2-Brake 5 Year Guarantee
Fenders	Aluminum; Removable	Aluminum; Removable	Aluminum; Removable	Aluminum; Removable	Aluminum; Removable	Aluminum; Removable
Side Stake Pockets	4 Total 2 per Side	6 Total 3 per Side	6 Total 3 per Side	6 Total 3 per Side	6 Total 3 per Side	6 Total 3 per Side
Aluminum Tongue	A-Frame 2-5/16" Coupler	A-Frame 2-5/16" Coupler	A-Frame 2-5/16" Coupler	A-Frame 2-5/16" Coupler	A-Frame 2-5/16" Coupler	A-Frame 2-5/16" Coupler
Swivel Tongue Jack	1200# Capacity	1200# Capacity	1200# Capacity	1200# Capacity	1200# Capacity	1200# Capacity
Breakaway Switch w/Battery	Yes	Yes	Yes	Yes	Yes	Yes
Aluminum Rear Stabilizer Jacks	2 Fold Down	2 Fold Down	2 Fold Down	2 Fold Down	2 Fold Down	2 Fold Down
Aluminum Ramps w/Storage	2-6' Ramps	2-6' Ramps	2-6' Ramps	2-6' Ramps	2-6' Ramps	2-6' Ramps

STANDARD FEATURES



**Removable
Fenders
7800-8200 Series**



**Swivel Jack
1200# Capacity**

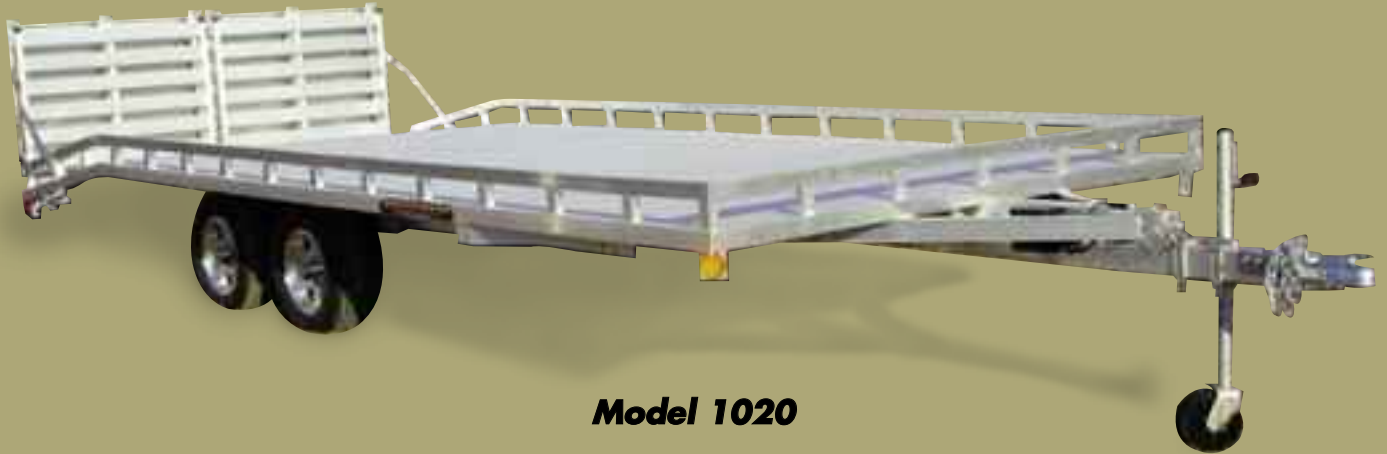


**Ramps
7800-8200 Series**

**5 YEAR
WARRANTY**

Quality
BUILT-IN

Built to last.



Model 1020

Tandem Axle Trailers

MODELS 1020-1026

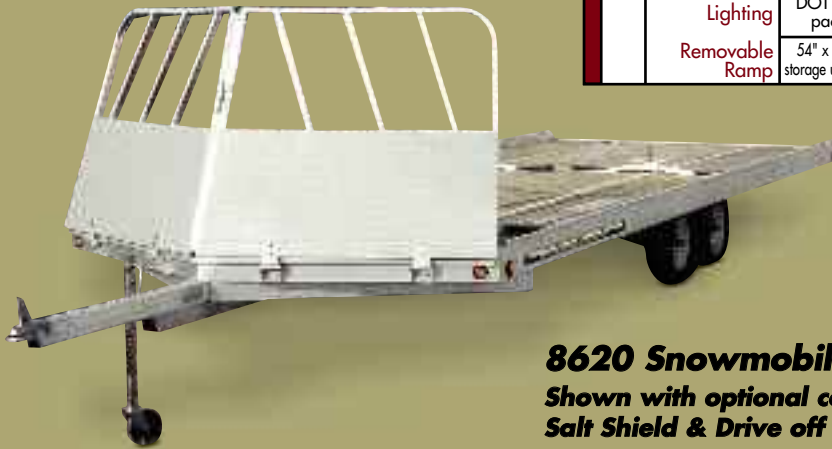
		1020	1022	1024	1026
STANDARD FEATURES	Width x Length	100" x 20'	100" x 22'	100" x 24'	100" x 26'
	Bed Height	32"	32"	32"	32"
	Weight	1500#	1575#	1650#	1725#
	GVWR	7000#	7000#	7000#	7000#
	Aluminum Star Wheel	14"	14"	14"	14"
	Torsion Axle	2-Brake 5 Year Guarantee	2-Brake 5 Year Guarantee	2-Brake 5 Year Guarantee	2-Brake 5 Year Guarantee
	Aluminum Tongue	A-Frame 2-5/16" Coupler	A-Frame 2-5/16" Coupler	A-Frame 2-5/16" Coupler	A-Frame 2-5/16" Coupler
	Swivel Tongue Jack	1200# Capacity	1200# Capacity	1200# Capacity	1200# Capacity
	Breakaway Switch w/Battery	Yes	Yes	Yes	Yes
	Aluminum Rear Stabilizer Jacks	2 Fold Down	2 Fold Down	2 Fold Down	2 Fold Down
	Aluminum Ramps w/Storage	Bi-fold Tailgate or 2-6' Ramps	Bi-fold Tailgate or 2-6' Ramps	Bi-fold Tailgate or 2-6' Ramps	Bi-fold Tailgate or 2-6' Ramps



1020 Shown with Dovetail and Bi-fold Tailgate (Standard Features)



DRIVE ON/OFF SNOWMOBILE TRAILERS



8620 Snowmobile Trailer
Shown with optional combination
Salt Shield & Drive off Ramp

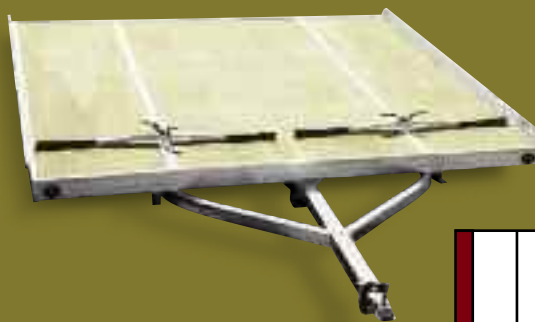
STANDARD FEATURES	SPECIFICATIONS					
	8610D	8612	8614	8618	8620	8622
Bed Size	102"x10'	102"x12'	102"x14'	102"x18'	102"x20'	102"x22'
Torsion Axle	1-2200#	1-2200#	2-2200#	2-2200#	2-2200#	2-2200#
Weight	450#	480#	700#	925#	1025#	1105#
Tires	20.5x8.5x10" 6 ply	20.5x8.5x10" 6 ply	20.5x8.5x10" 6 ply	20.5x8.5x10" 6 ply	20.5x8.5x10" 6 ply	20.5x8.5x10" 6 ply
Wheels	5 bolt galphrite steel wheels	5 bolt galphrite steel wheels	5 bolt galphrite steel wheels	5 bolt galphrite steel wheels	5 bolt galphrite steel wheels	5 bolt galphrite steel wheels
Tongue	heavy duty A-frame with 2" coupler	heavy duty A-frame with 2" coupler	heavy duty A-frame with 2" coupler	heavy duty A-frame with 2" coupler	heavy duty A-frame with 2" coupler	heavy duty A-frame with 2" coupler
Floor	5/8" treated marine tech plywoods	5/8" treated marine tech plywoods	5/8" treated marine tech plywoods	5/8" treated marine tech plywoods	5/8" treated marine tech plywoods	5/8" treated marine tech plywoods
Lighting	DOT lighting package	DOT lighting package	DOT lighting package	DOT lighting package	DOT lighting package	DOT lighting package
Removable Ramp	54" x 72" with storage underneath	54" x 72" with storage underneath	54" x 72" with storage underneath	54" x 72" with storage underneath	54" x 72" with storage underneath	54" x 72" with storage underneath

Quality
BUILT-IN

Options are
Available
for all Model
Numbers

recessed tie downs
spare tire mounting bracket
swivel tongue jack
electric/surge brakes
tongue handle
spare tire and galphrite steel wheels
20.5x8.5x10" 6 ply 1105# cap./tire
ST175/80R13 4 ply 1340# cap./tire

TILT BED SNOWMOBILE TRAILERS



8610 Snowmobile Trailer

**5
YEAR
Warranty**

STANDARD FEATURES	SPECIFICATIONS		
	8605	8610	8612
Bed Size	50"x10'	102"x10'	102"x12'
Weight	300#	425#	460#
Tires	18.5x8.5x8" 6 ply	18.5x8.5x8" 6 ply	18.5x8.5x8" 6 ply
Wheels	5 bolt galphrite steel wheels	5 bolt galphrite steel wheels	5 bolt galphrite steel wheels
Tongue	heavy duty A-frame with 2" coupler	heavy duty A-frame with 2" coupler	heavy duty A-frame with 2" coupler
Dexter Torsion Axles	1-2200#	1-2200#	1-2200#
Floor	5/8" treated marine tech plywood	5/8" treated marine tech plywood	5/8" treated marine tech plywood
Lighting	DOT lighting package	DOT lighting package	DOT lighting package

Aluminum Enclosed Snowmobile Trailers



**Kick it up
a notch.**

ENCLOSED SNOW TRAILERS

STANDARD FEATURES

	AE714TAV	AE718TAV	AE722TAV
Width x Length	81 3/4" x 14'	81 3/4" x 18'	81 3/4" x 22'
Weight	1920#	2120#	2320#
Interior Height	6'	6'	6'
GVWR	7000#	7000#	7000#
Alum. Star Wheels	14" 1760# cap/tire	14" 1760# cap/tire	14" 1760# cap/tire
Torsion Axle	2-brake 5 yr warranty	2-brake 5 yr warranty	2-brake 5 yr warranty
Alum. Tongue	A-frame 2" coupler	A-frame 2 5/16" coupler	A-frame 2 5/16" coupler
Swivel Tongue Jack	standard	standard	standard
32" Side Door with Handle	standard	standard	standard
2-Dome Lights	standard	standard	standard
Hold Downs	ski hold downs with plastic sleeves	ski hold downs with plastic sleeves	ski hold downs with plastic sleeves
Floor	5/8" treated marine tech plywood	5/8" treated marine tech plywood	5/8" treated marine tech plywood
Interior	4' high plywood	4' high plywood	4' high plywood
Front Rock Guard	standard	standard	standard
Rear Ramp	77" x 68"	77" x 68"	77" x 68"
Front Curbside Ramp	63" x 68"	63" x 68"	63" x 68"
V-Nose	standard - 60" additional length	standard - 60" additional length	standard - 60" additional length
LED Lights	standard	standard	standard

AE722TAV
Enclosed Snowmobile Trailer



AE714TAV
Enclosed Snowmobile Trailer

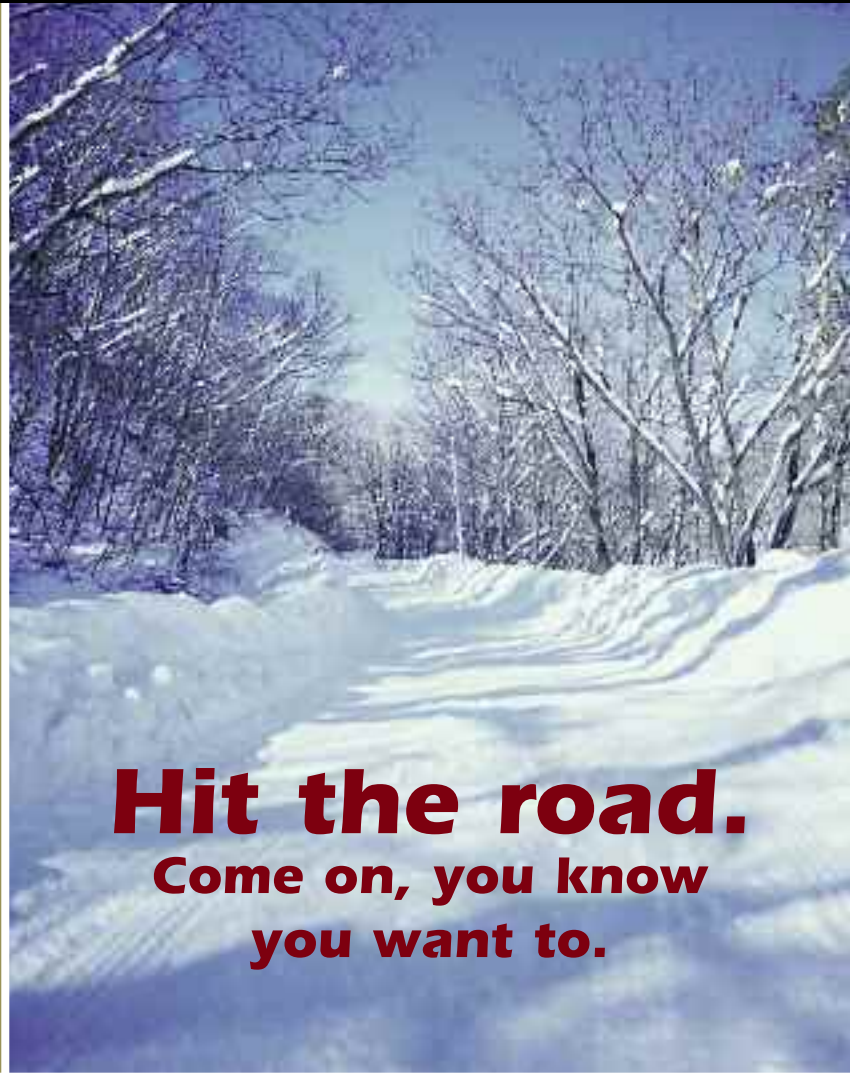


**5 YEAR
WARRANTY**

ENCLOSED SNOW TRAILERS

STANDARD FEATURES

	AE8620	AE8624
Width x Length	101" x 20'	101" x 24'
Overall Height	102"	102"
Weight	2800#	3000#
Interior Height	67"	67"
GVWR	7000#	7000#
Alum. Star Wheels	14"-1760# cap/fire	14"-1760# cap/fire
Torsion Axle	2-brake 5 yr warranty	2-brake 5 yr warranty
Alum. Tongue	A-frame 2 5/16" coupler	A-frame 2 5/16" coupler
Swivel Tongue Jack	standard	standard
32" Side Door with Handle	standard	standard
2-Dome Lights	standard	standard
Hold Downs	ski hold downs with plastic sleeves	ski hold downs with plastic sleeves
Floor	5/8" treated marine tech plywood	5/8" treated marine tech plywood
Interior	4' high plywood	4' high plywood
Front Rock Guard	standard	standard
Rear Ramp	93" x 69"	93" x 69"
Front Curbside Ramp	59" x 61"	59" x 61"
LED Lights	standard	standard



Hit the road.
Come on, you know
you want to.

**5 YEAR
 WARRANTY**

**AE8624
 Enclosed Snowmobile Trailer**

**Interior of
 Enclosed Snowmobile Trailer**



Aluminum Truck Beds

STANDARD FEATURES

- Extruded aluminum floor with drop rear skirt
- 1/4" x 2" Rub rail with Stake pockets
- Headache rack with sealed beam lights
- 3" channel main stringers adjustable to fit different models of trucks
- Recessed sealed beam lights
2 tail lights; 7 clearance lights
- License plate light
- Pre-wired and lights installed

OPTIONS

- Gooseneck Hitch opening with removable door
- Backup light
- Sides and Tailgate
- LED Upgrade

SPECIFICATIONS

	Model # 6600/6800	Model # 8100	Model # 9000	Model # 9600
BED SIZE	66" x 77"			
	66" x 87"	81" x 87"		
	68" x 87"			
		81" x 96"	90" x 96"	96" x 96"
		81" x 106"	90" x 106"	96" x 106"
		81" x 115"	90" x 115"	96" x 115"
		81" x 125"	90" x 125"	96" x 125"
			90" x 144"	96" x 144"
				96" x 168"
				96" x 192"

For more information, contact your local dealer.
Specifications subject to change without notice.

Quality
BUILT-IN



**5 YEAR
WARRANTY**



Shown with:

- Sides and Tailgate
- 1/4" x 2" Rub rail with Stake pockets

ALUMA
www.alumaklm.com

**Quality trailers
that last.**

**Trust Aluma. We'll get you
on the road to adventure.**

101 East Seneca • Bancroft, IA 50517 • 515-885-2398

Fax: 515-885-2592 • www.alumaklm.com