

*American Sport*   
Trailer Company



Genesis 912



New for 2008



**Genesis**-Etymology: Latin, from Greek, from *gignesthai* to be born -- : the origin or coming into being of something.

We think Genesis is a good name for the first product offered by American Sport Trailer Company, both for the reason that it is our beginning, and because as a company we wish to honor the Lord.

Genesis is unique among travel trailers for many reasons. Foremost among these is that Genesis is designed to be easy to use. Like a tent trailer, Genesis is small enough to fit in most driveways. In contrast to a tent trailer, there is nearly no set up or tear down. Genesis is ready to go on a whim. Moreover, with Genesis, you enjoy a private bathroom & shower, and rest secure in the knowledge that you are sleeping behind thick, solid walls when you dead-bolt the entry door.

During development we also gave consideration to the fact that people are taller today, and at 6'4" Genesis offers far and away the most headroom in its' class. In addition, while there are many features that make Genesis unique, one of the most compelling is that it is built from hand-laid fiberglass, in the same manner as a boat. Why is this important? Because unlike most RV's which are built with laminated walls screwed to a separate roof with caulked seams, Genesis has a single piece molded fiberglass top. This means less maintenance, far less potential for leaks and far more potential for enjoyment, especially as the years pass by.

So, for whom is Genesis? It is for those of you who love the outdoors; who love to be close to nature, and who, for lack of a better word, love to "camp". Whether you desire to hike, bike, kayak, or canoe, or just sit and watch the world go by, Genesis makes a great base of operations. Genesis offers the best of tent camping combined with the amenities and luxuries that we have become accustomed to in our daily lives. In addition, while primarily intended to be used by one or two people at a time, Genesis also works well in conjunction with a tent for larger groups or families, and makes a great home base for a tailgate party or a weekend in the desert motor-biking.

If you are considering the purchase of a weekend camper, we hope that you will decide to join our Genesis family.



*American Sport*  
Trailer Company







***“Genesis gives us the freedom to go where we want to go and to do what we want to do, even on the spur of the moment!”***



Genesis opens the door to a world of outdoor fun!

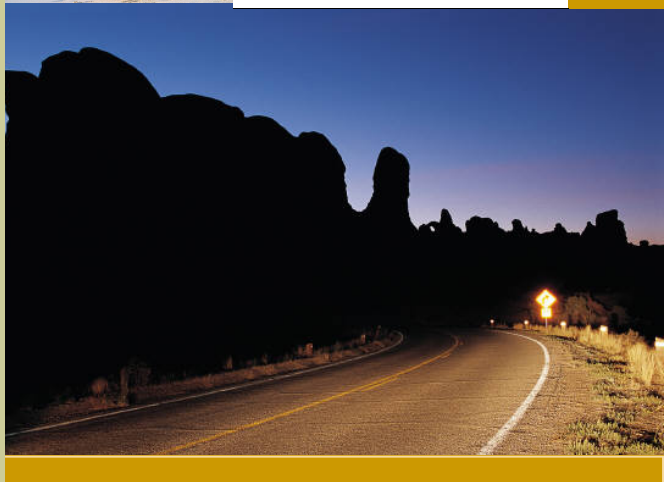


Do you like to tailgate? Imagine everything you need including a private bath in a single parking space!

Genesis is the shortest and lightest trailer available on the market today to feature a private bath and genuine fiberglass construction. Genesis standard features include:

- Molded Fiberglass Exterior
- 6'4" interior headroom
- Private toilet and shower
- Closet/dresser
- Full sized bed
- 8" LCD TV/DVD
- AC
- Heat
- Stereo CD
- Full Galley
- 12 feet long
- 2860 lbs.

***Check out Genesis today!***



## INSIDE:



An open letter & Table of Contents



Inside Cover

Construction



1

Interior



3

Galley



4

Exterior



5

Standard Features & Floor Plan



7

Specifications



8

## Construction



*“Genesis is not  
your father’s  
travel trailer.”*



Historically, RV's are produced by gluing layers of foam, 1/8" thick plywood and very thin (1/32" or less) fiberglass over a metal or wood frame to create the walls. These walls are attached by screws to a plywood floor, and to a roof that is constructed in a similar manner to the walls. The roof is then covered with rubber. There are a number of problems with this method of construction. These problems include the walls having a tendency to separate over time as the glue bonds fail, leaks from the seams at the roof as the sealants dry out, screws that loosen over time, and finally black streaks and tears common to the use of rubber roofing. Genesis has been designed to avoid these concerns.

In every respect, **Genesis** is fresh and innovative in both its' design and construction:

- Tubular Steel Frame
- Modular Design
- Molded Fiberglass Body
- Framed Walls
- Fiberglass Panel Shower Walls
- Roto-molded Tanks

And just check out the list of standard features found later on in this brochure. You won't believe what is included given the size and price of **Genesis**. Compare and see for yourself!



*We place a  
molded  
fiberglass  
“tub” onto  
a powder  
coated  
tubular  
steel  
chassis.*



*To this  
foundation  
we add  
molded  
fiberglass  
“skirts”.*





## Construction

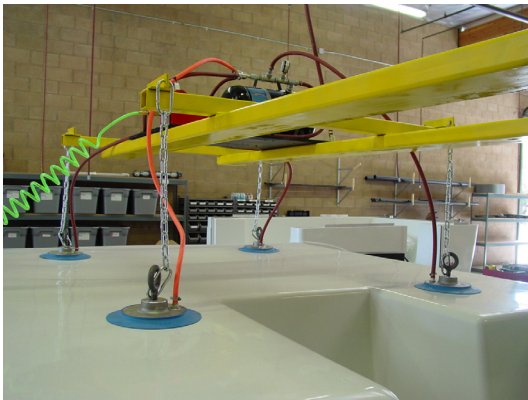


*“Using only the greatest of care, we build your trailer from the ground up, taking pride in each step.”*



Once the interior walls are in place, they are fastened to the 2” steel tube frame. This design sandwiches the fiberglass tub and skirts between the walls and the chassis.

All the electrical and interior work is completed, and the supporting ceiling structure is set.



The fiberglass “roof-cap” is then set in place using a vacuum lift system.

The assembled trailer is finished inside and out, and tested for conformance to State and Federal Standards. All tests and system designs are certified and regularly audited by Pacific West Associates, Inc.



### Pacific West Associates, Inc.

This recreational vehicle manufacturer certifies compliance to the NFPA 1192 standards for recreational vehicles. Manufacturer also complies to the current applicable NFPA No. 70 National Electric Codes pertaining to this type of product.

P.O. Box 40140  
Casper, Wyoming  
82604

Seal of Approval  
Compliance  
No. **84962**

This manufacturer is subject to strict on-going inspection and monitoring of quality assurance functions as required by law.

Pacific West Associates  
Connecting the  
Manufacturer,  
Dealer,  
and  
Consumer

Mechanical Engineering • Electrical Engineering  
• Structural Engineering • Forensic Engineering

## Interior



*"I love the outdoors, but I had my reservations about camping. Genesis has changed all that. With a private bath, hard walls and a locking door, my reservations are a thing of the past!"*



Private shower/washroom with locking pocket door.



Open and airy with large solar tinted windows and ample storage.



Sofa converts into a standard full-size bed.



Amenities include mini-blinds, A/C, LCD TV / DVD, Stereo/CD player & Forced Air Heating.



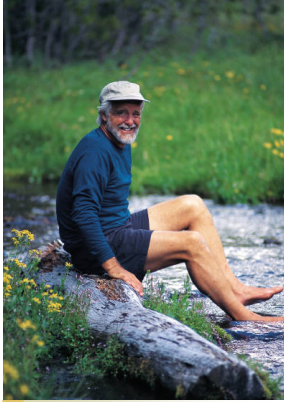
*"I love the attention to detail!"*



6' 4" tall interior height with comfortable seating.



# Galley



*“You can’t beat Genesis at meal time. Everything you need is right there. With Genesis, meal preparation is quick and easy. The time saved cooking and cleaning means more time to relax.”*



Open the door to camp cooking with a Gourmet touch!



Atwood 2 Burner cook-top with cover & built-in wind guard.



Portable 12-volt refrigerator/freezer.



110-volt GFCI outlet.



Exterior speakers & 12-volt power outlet.



Ball bearing drawer slides.



Solid surface one-piece counter top with sink.

# Exterior



*“When you consider the standard features offered by Genesis, you will be amazed at both what is included and the price!”*



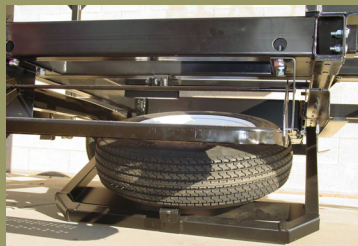
Hand-laid fiberglass construction means durability. Less maintenance, more fun.



Screened entry door with dead-bolt action.



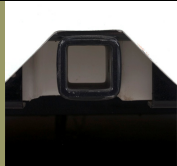
A&E 8' Case Awning



Full size spare under chassis.



Detachable Marine Grade Power Cord



2" receiver for Bike racks. (Not for towing)



Fresh water fill and city water connection.



5Gallon exchangeable LPG tank in its own compartment.



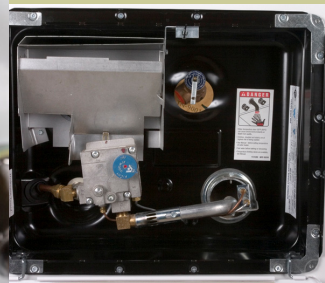
# Exterior



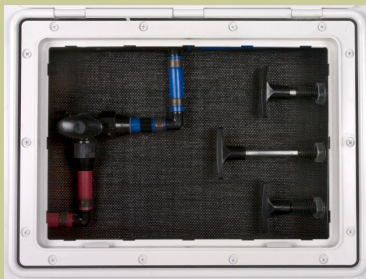
14" Sure-trail ST195/75D14  
LRC Heavy Duty Trailer Tires.



Electric-brake torsion axles  
with auto-lube grease hubs.



6 Gallon  
LPG  
water  
heater.



Concealed remote water  
valve controls.



Locking pull out storage com-  
partment.



Auxiliary Cable/Satellite  
input & exterior coax  
output.



Porch light.



Fold-out entry step.



Exterior GFCI 110V  
Outlets.

Deep-cycle  
RV battery.



*"Genesis allows you to  
hit the highway in  
comfort and style."*



Aerodynamic Styling,  
eye-catching graphics.

Telescoping  
TV Antenna.



# Genesis 912 Standard Features & Floor Plan

## Interior Features

- Full Size Bed/Jack Knife Sofa
- Stereo/CD player
- 8" Flat Screen 12-volt TV
- Integrated DVD player
- Bullet reading lights
- Overhead Storage
- Wardrobe
- Double dresser drawers
- Extra-Large UV grey glass windows
- Mini-blinds

## Interior Bath

- Fiberglass enclosure
- Flush toilet with 15 Gallon Tank
- Integrated shower
- Designer Hardware
- Lavy
- Mirror and personal storage

## Exterior Galley

- Solid surface counter top
- Integrated sink
- 2 burner cook-top & protective cover
- Portable 12-volt refrigerator/freezer
- Exterior Stereo Speakers
- 110-volt power outlet
- 12-volt power outlet
- Pass-through to main cabin
- Overhead Storage
- Ample Galley storage
- Cabinet style drawer glides

## Exterior Features

- 8' European case awning
- Screened entry door with dead bolt
- Entry step
- Enclosed exchangeable LP tank system
- Coaxial TV input and exterior output
- TV antenna
- 110-Volt GFI protected exterior outlet
- Remote Dump valve controls
- 30-amp marine style detachable power cord

## Chassis

- Powder Coated Tubular Steel Frame
- Marine Grade Axle
- Independent Torsion Suspension
- Electric Brakes
- "Grease Buddy" Auto Lube Hubs
- 14" Heavy Duty Trailer Tires
- 2" Receiver for Bike Carriers
- Rear Stabilizer Jacks
- Grade 5 Hardware with Aircraft Nuts
- Telescoping Swivel Jack with wheel

## Construction

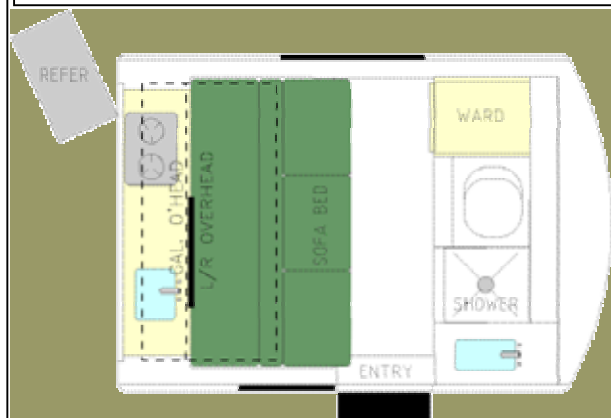
- Steel Support Framework
- Molded Fiberglass lower interior
- Molded fiberglass exterior
- Fully framed walls

## Safety

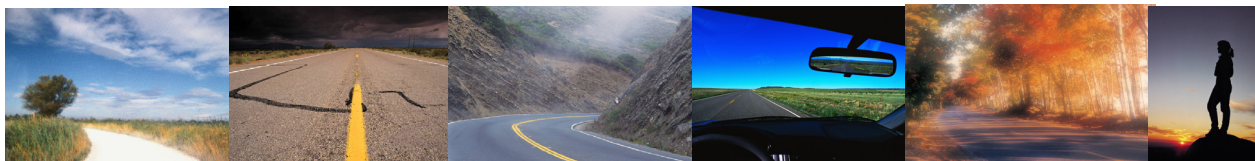
- LP Detector
- Smoke Alarm
- Certified code compliance

## Systems

- 12,000 BTU LPG Forced Air Furnace
- 5,000 BTU Air Conditioner (110-only)
- 6 Gallon LPG hot water heater
- Deep Cycle RV/Marine Battery



Genesis 912 Floor Plan







# Genesis 912 Specifications

Axle Weight (Dry).....	2390 lbs.
Hitch Weight.....	470 lbs.
UVW*.....	2860 lbs.
GVWR**.....	3500 lbs.
GAWR***.....	3220 lbs.
CCC****.....	315 lbs.
Payload.....	640 lbs.
Hitch Capacity.....	3500 lbs.
Number of Axles.....	1
Axle Capacity.....	3750 lbs.
Tire Size.....	ST195/75D14
Tire Load Rating @ 50 PSI.....	1610 lbs.
Cabin Floor/Chassis Length.....	9 feet
Overall Length to Hitch.....	12 feet
Width.....	7 feet
Height.....	9 feet
Fresh Water Tank.....	35 Gallons
Grey Water Tanks.....	18.5 Gallons
Black Water Tank.....	15 Gallons
Propane Tank (20lbs.).....	5 Gallons
Furnace.....	Propane fired Forced Air 12,000 BTU
Water Heater.....	Propane fired 6 Gallons
Air Conditioning.....	(110 Volt AC) Forced Air 5,000 BTU
Refrigerator/Freezer.....	(12VDC) 1.1 cubic feet (portable)

\*UVW = Unloaded Vehicle Weight

\*\*GVWR = Maximum Vehicle Load all inclusive

\*\*\*GAWR = Maximum Axle Load

\*\*\*\*CCC = Cargo Carrying Capacity (GVWR-Fresh Water Tank Weight-LPG Weight)

Water= 8.3 lbs. per gallon, LPG= 4.2 lbs. per gallon.

All weights are estimated, actual weights may vary.

Important, please read: Product information, photography and illustrations included in this publication were as accurate as possible at the time of printing. For further product information and changes, please visit our website at [www.americansporttrailer.com](http://www.americansporttrailer.com) or contact your local American Sport Trailer dealer. Prices, materials, design and specifications are subject to change without notice. All weights, fuel, liquid capacities and dimensions are approximate. The user is responsible for selecting the proper combination of loads (i.e. equipment, fluids, cargo, etc.) to ensure that the vehicle's capacities are not exceeded.

# American Sport Trailer Company



American Sport Trailer Company L.L.C.  
135 N. Aspan Ave. # 5  
Azusa, California 91702  
Phone: (626) 969-4740  
Fax: (626) 969-4904  
E-mail: [info@americansporttrailer.com](mailto:info@americansporttrailer.com)  
Web: [www.americansporttrailer.com](http://www.americansporttrailer.com)

Copyright © 2007 American Sport Trailer Company, L.L.C.  
All Rights Reserved

Your local American Sport Trailer Dealer is: