

Wildwood DLX
by FOREST RIVER
Wildwood DLX
by FOREST RIVER

Wildwood Wildwood

by FOREST RIVER DLX

AMERICA'S BEST SELECTION OF QUALITY BUILT AND AFFORDABLE TRAVEL TRAILERS, FIFTH WHEELS AND EXTENDED STAY TRAILERS

{GO WILD}



WILDWOOD DLX SERIES
PERFECT FOR EXTENDED STAYS

WILDWOOD SERIES
AFFORDABLE, TOWABLE FAMILY FUN

NOBODY HAS YOU COVERED LIKE WILDWOOD



The 26TBSS GO WILD! Wildwood is the ultimate camping experience. Wildwood offers everything you demand from your travel trailer or fifth wheel. The selection of our floorplan offering ranges from 26' to 37' floor plans. If you are interested in a travel trailer like the 26TBSS (pictured below) or a larger 37 footer for destination living, chances are we have the floor plan to meet your needs. **NOBODY HAS YOU COVERED LIKE WILDWOOD!**



{GO WILD}

1



80" interior

26TBSS SHOWN IN WINE.
(CUSTOMER SUPPLIED TV)



(from left to right) • Self edge countertop • Spray handle kitchen faucet • Ball bearing drawer glides • Under sofa drawers • Exterior baggage door



29BHBS WILDWOOD OFFERS TREMENDOUS FAMILY FUNCTIONALITY. THE U-SHAPE DINETTE FEATURE IN THE 29BHBS PROVIDES A DINING EXPERIENCE THE WHOLE FAMILY CAN ENJOY OR IT CAN BE CONVERTED INTO A LARGE SLEEPING AREA. SHOWN IN COFFEE



26TBSS SHOWN IN WINE.



Nitrogen will stay cool at all times and will not permeate through tires which will maintain the performance of your tires. Nitrogen filled tires improve your gas mileage, increase your tire life, and provide a safe ride.



The cooler slide system option is great addition to your trailer. It comes with a cooler that is placed on our slider system that is located in the front baggage door. It conveniently slides in for storage and out for enjoyment. (only available on front queen bed models)



3

36FLKB SHOWN IN WINE INTERIOR. GET A GREAT NIGHT'S SLEEP IN THE MASTER BEDROOM SUITE. THE KING BEDROOM SLIDE OUT IN THE 36FLKB PROVIDES SPACIOUS SLEEPING AND A HUGE WARDROBE. (CUSTOMER SUPPLIED TV)



36FLKB This walk through bathroom includes cabinet storage above and below the sink as well wardrobe cabinets with 4 drawers on full extension ball bearing drawer glides. Wildwood is always striving to make your camping experience more convenient.

The radius corner fiberglass entry door provides functionality and safety. The radius corners on the door provide a strong door frame structure. Also, you won't risk tearing your awning when opening the entry door while having the awning out.



COFFEE INTERIOR



MOSS INTERIOR



WINE INTERIOR



TAN INTERIOR

Form follows function. At Wildwood, quality is serious business and it shows. Our commitment to quality includes a one piece rubber roof with 12 year warranty and a heated and enclosed fresh water tank.

The floor in Wildwood is 5/8" tongue and groove plywood. Most of our competitors use OSB board which is not as durable as our real wood floor. The queen bed on assist struts shown lifted to access storage underneath bed.



CONSTRUCTED TO LAST FOR MANY YEARS OF ENJOYMENT. LOOK INSIDE THE WILDWOOD AND SEE WHY IT IS ONE OF THE MOST DURABLE RV'S ON THE ROAD TODAY.



CONSTRUCTION

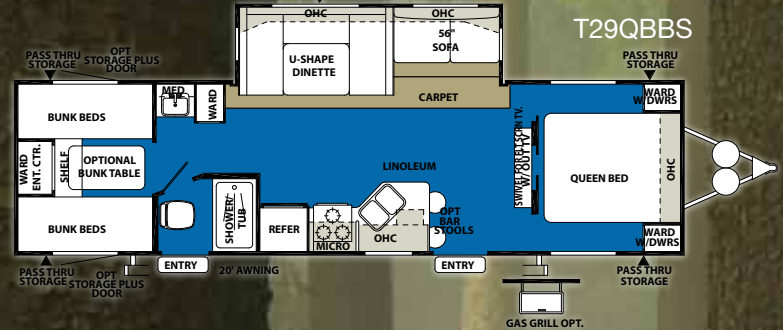
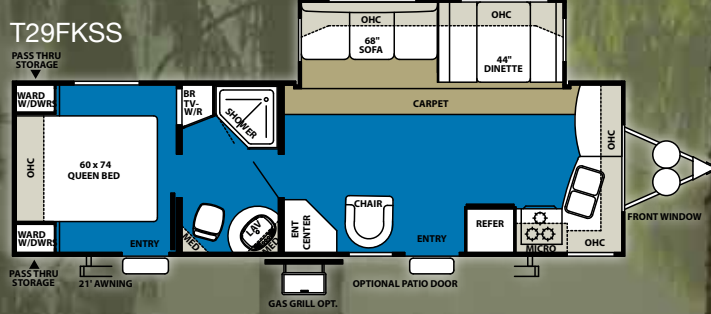
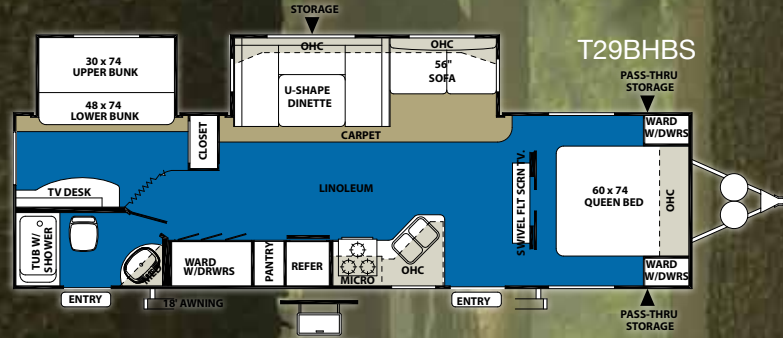
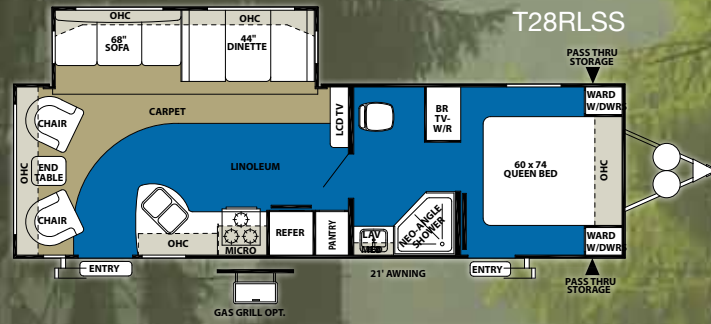
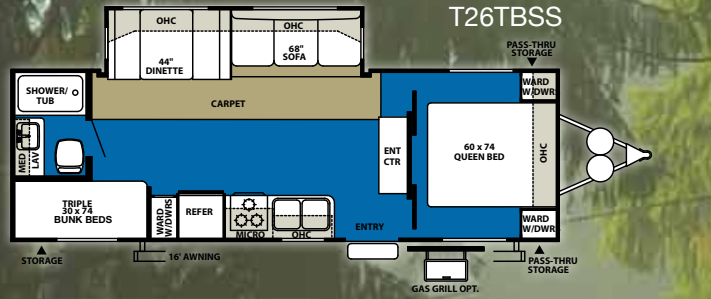
- {A} MAIN TRIPLE ENTRY STEPS
- {B} 2" X 3" FLOOR JOISTS 12" ON CENTER
- {C} 5/8" 5-PLY TONGUE & GROOVE PLYWOOD FLOOR DECKING
- {D} 2" WALL STUDS 16" OR LESS ON CENTER
- {E} FIBERGLASS 30" ENTRY RADIUS DOOR
- {F} .024 ALUMINUM SIDING
- {G} 5" BOWED TRUSS ROOF RAFTERS
- {H} SEAMLESS RUBBER ROOF (12 YR. WARRANTY)
- {I} R-7 FIBERGLASS INSULATION THROUGHOUT
- {J} FULL PASS THRU STORAGE - CLAMP RING BAGGAGE DOORS
- {K} CLAMP RING JALOUSIE WINDOWS
- {L} SMOOTH ROLLED SKIRTING
- {M} DUCTED HEAT
- {N} DIAMOND PLATE ROCKGUARD
- {O} 3/8" ROOF DECKING (FULL WALK-ON ROOF)
- {P} LP BOTTLE COVER W/ EASY ACCESS
- {Q} 13.5K DUCTED ROOF A/C
- {R} CARPET WITH PADDING
- {S} HITCH LIGHT
- {T} ABS FENDER SKIRTS
- {U} BEAU-FLOR™ DURABLE FLOORING

Wildwood

by FOREST RIVER

{SLIDE-OUT TRAVEL TRAILERS} **Wildwood**

BY FOREST RIVER



5

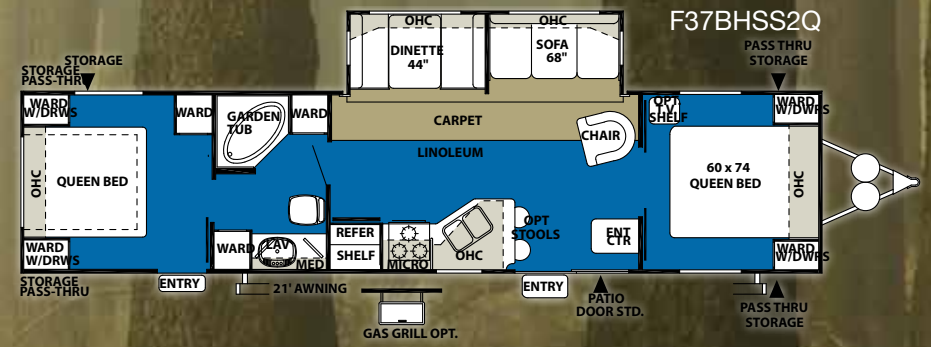
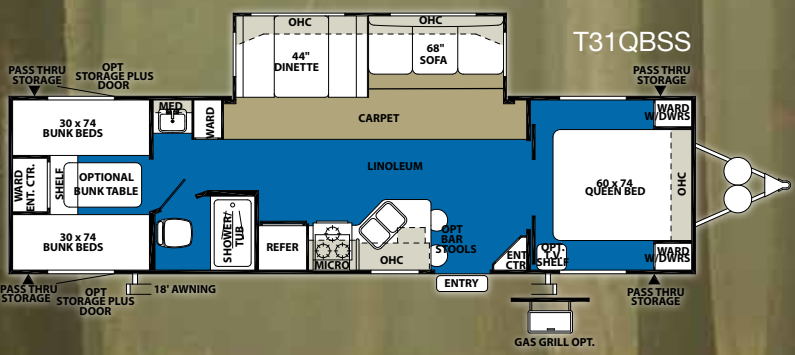
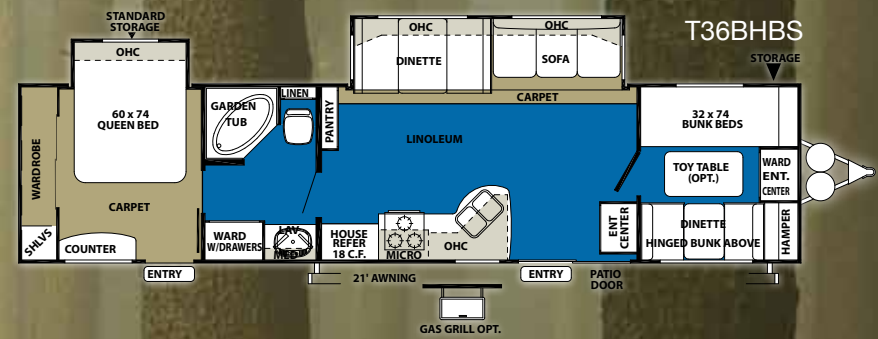
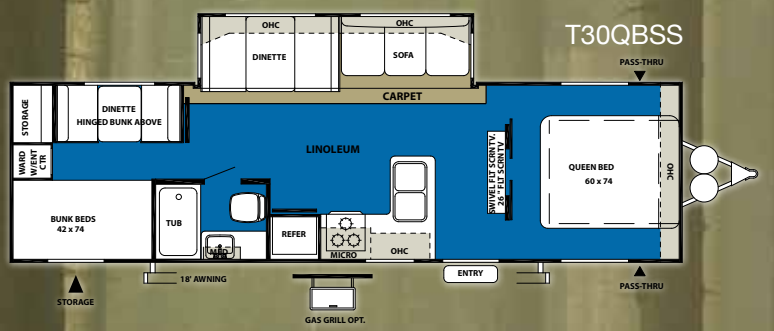
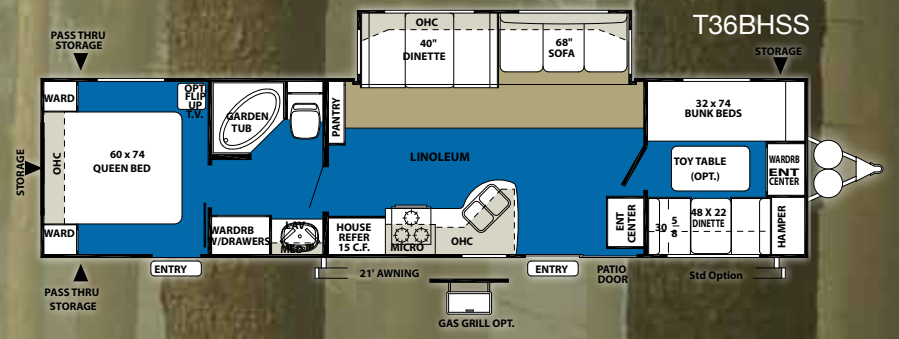
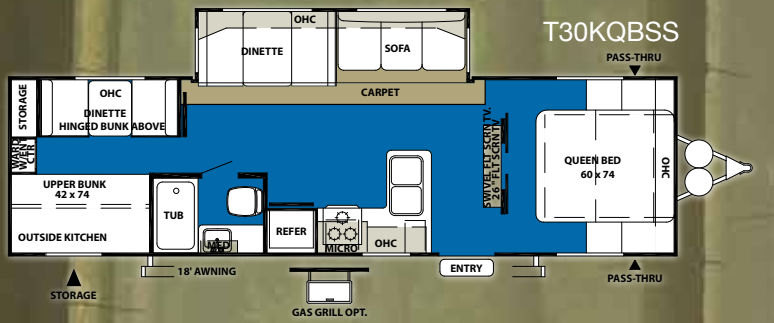
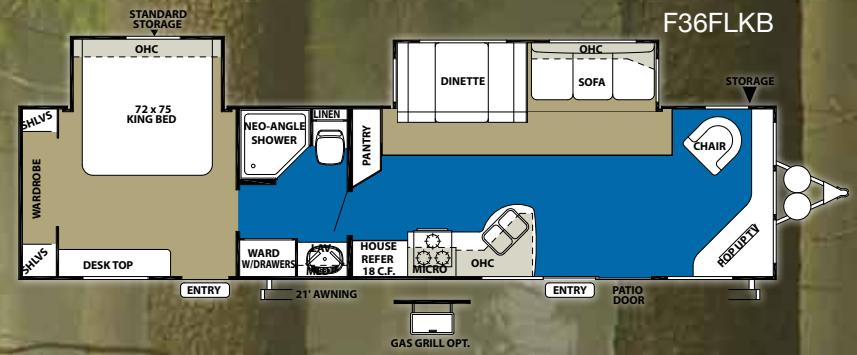
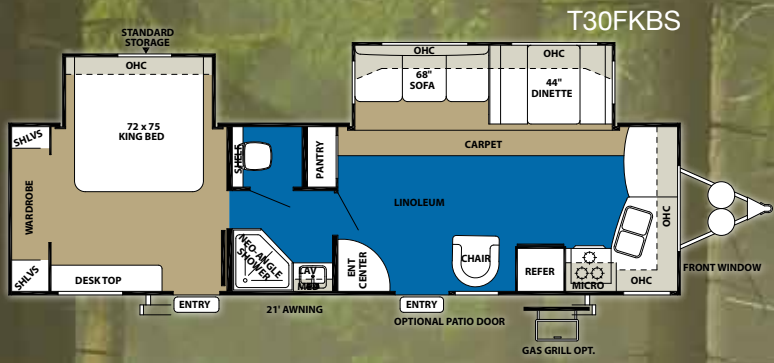
CORRECT AIR FLOW

{SLIDE-OUT TRAVEL TRAILER SPECIFICATIONS}

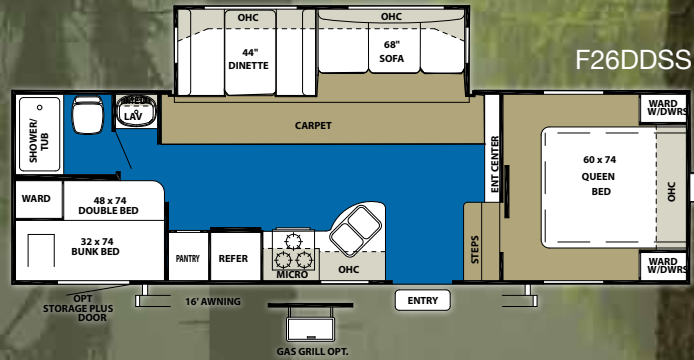
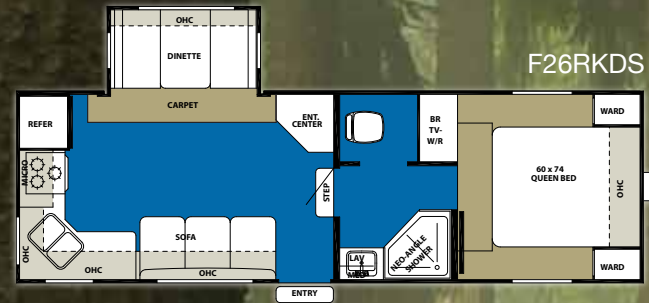
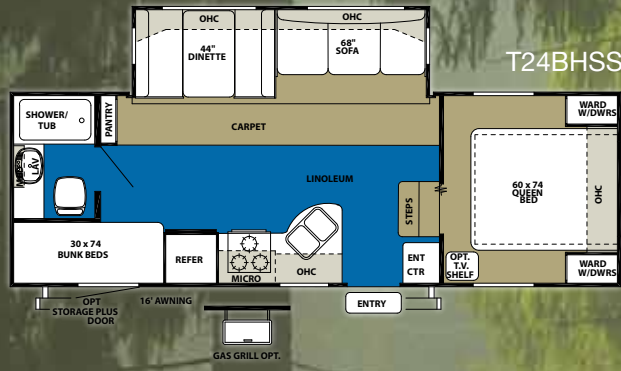


MODEL 26TBSS
WILDWOODS AERODYNAMICALLY
CORRECT FRONT PROFILE IMPROVES
TOWABILITY AND GAS MILEAGE.

	26TBSS	28RLSS	29FKSS	29BHBS	29QBBS	30FKBS	30KQBSS	30QBBS	31QBSS	36BHSS	36BHBS	36FLKB	37BHSS2Q
HITCH WEIGHT lb	805	660	910	875	826	832	899	980	805	990	720	845	970
AXLE WEIGHT	5075	5342	5306	6820	5772	6822	5985	5595	5855	6390	7171	7243	6630
DRY SHIP WEIGHT	5880	6002	6206	7695	6598	7654	6884	6575	6660	7380	7891	8088	7600
G.V.W.R	7805	7660	7900	11035	10986	10992	11059	11140	10965	11150	10880	11005	11130
CCC cargo capacity	1887	1620	1656	2960	4329	3279	4116	4565	4267	3732	2951	2858	3092
EXT LENGTH	28' 9"	32' 0"	30' 5"	34' 3"	35' 3"	34' 9"	33'	33' 2"	34' 7"	33' 11"	36' 7"	38' 2"	39' 0"
EXT HEIGHT	11' 1"	11' 1"	11' 1"	11' 1"	11' 1"	11' 1"	11' 1"	11' 1"	11' 1"	11' 1"	11' 1"	11' 1"	11' 1"
INT HEIGHT	80"	80"	80"	80"	80"	84"	84"	80"	80"	80"	80"	84"	80"
FRESH WATER CAP gal	42	42	42	35	35	41	41	42	42	42	42	42	42
BLACK WATER CAP gal	35	35	35	35	35	35	35	35	32	32	32	32	32
GREY WATER CAP gal	35	35	70	66	32	60	60	60	35	35	35	34	35
TIRE SIZE in	15"	15"	15"	15"	15"	15"	15"	15"	15"	15"	15"	15"	15"
AWNING SIZE ft	16'	23'	18'	18'	20'	21'	18'	21'	18'	21'	21'	21'	21'
LCD TV	NA	26"	NA	26"	26"	19"	26"	26"	NA	NA	NA	26"	NA



{WILDWOOD MID-PROFILE WHEELS}



7

Wildwood

by FOREST RIVER

1/2 TON TOWABLE FIFTH WHEELS



MODEL 24BHSS
WILDWOOD PROUDLY MANUFACTURES SOME OF THE LIGHTEST AND MOST LIVABLE FIFTH WHEELS IN TODAY'S MARKET.

{SLIDE-OUT FIFTH WHEEL SPECIFICATIONS}

	24BHSS	F26DDSS	F26RKDS
HITCH WEIGHT lb	1050	1238	1316
AXLE WEIGHT	5000	5293	5183
DRY SHIP WEIGHT	6050	6531	6499
GVWR	8050	8238	8316
CCC cargo capacity	1962	1669	1779
EXT LENGTH	26' 2"	28' 0"	27' 8"
EXT HEIGHT	12' 5"	12' 5"	12' 5"
INT HEIGHT	84"	84"	84"
FRESH WATER CAP gal	42	42	48
BLACK WATER CAP gal	32	32	42
GREY WATER CAP gal	35	35	64
TIRE SIZE in	15"	15"	15"
AWNING SIZE ft	16'	21'	16'
LCD TV	NA	26"	NA

{WILDWOOD STANDARDS/OPTIONS AND INTERIOR FEATURES}

CONSTRUCTION AND EXTERIOR

- 3/8" walk-on roof decking
- Diamond plate rockguard (travel trailers)
- Fiberglass radius baggage doors with thumb pulls and holdbacks
- Hose carrier bumper with end caps
- Full pass through storage (per floorplan)
- A&E awning with one piece vinyl
- Radius clamp ring Jalousie Windows
- E-Z open entry step
- 20 lb. LP bottles with cover
- Lockable exterior range vent cover
- Fender skirts
- Powder coated I-beam frame
- Cambered chassis
- 5/8" 5-ply tongue and groove plywood floor decking
- 2" x 3" floor joists 12" on center
- Enclosed fresh water tank in a heated compartment
- Water heater by-pass
- Seamless roto-cast holding tanks
- 2" wall construction 16" (or less) on center
- R-7 fiberglass insulation throughout
- 13 ply cross micro-laminated beam header above slide-outs
- Double wipe slide-out seal (slide-out models)
- Electric slide-out systems (flush floor)

- Seamless roof with 12-year warranty
- 5" bowed truss roof rafters
- Arched-Mortise & Tenon wood cabinet doors
- Swing arm entry assist handle
- 13.5 btu ducted air with quick cool
- 6 gallon gas auto re-ignitor water heater
- Toy lock
- Nitrogen filled tires
- Outside kitchen (30KQBSS only)
- Steel framed 30" smooth fiberglass radius entry door
- 2 Outside speakers

KITCHEN

- Dometic® double door refrigerator
- Deep basin 60/40 residential style sink
- Microwave with carousel
- 14" deep overhead cabinets
- 3-burner, high output range with oven
- Range hood with 12-volt exhaust fan and light
- Solid wood drawers
- Pantry storage (per floorplan)
- Knife rack
- Large overhead cabinets
- Wall-mounted systems monitor panel
- Self edge formica kitchen counter top
- Beau (non-linoleum) wood grain flooring
- Full extension ball bearing drawer glides

- Kitchen silverware drawer
- Single lever kitchen faucet
- Delta (style) riser/sprayer at kitchen sink
- Wood cover over cold air return

LIVING ROOM

- 26" LCD TV (28RLSS, 29BHBS, 29QBSS, 30QBSS, 30KQBSS, 36FLKB)
- 80" interior height (travel trailer models)
- 84" interior height (fifth wheel models)
- 69" interior slide height (slide-out models)
- 13,500 BTU roof air conditioner
- Swivel rocker(s) (per floorplan)
- Decorative wall light
- Extra large 44" pedestal booth dinette
- TV antenna and booster
- AM/FM stereo with CD and 4 cube speakers
- Swing-arm wall sconce with pleated shade
- 25K BTU suburban forced air DSI furnace with thermostat
- In-floor rigid heat ducting
- Jumbo window at booth dinette
- Jumbo drawer(s) under Jiffy Sofa with full extension ball bearing drawer glides (N/A air hide-a-bed)
- Patio door with vertical blinds (36BHBS, 36BHSS, 37BHSS2Q, 36FLKB)
- Self edge formica dinette counter top

BEDROOM

- Bedroom carpet (fifth wheel models)
- Strut lifted storage area under bed
- Bedside A/C power outlets (2)
- Solid bedroom privacy doors (most models)
- Bedside wardrobe cabinets with mirrors
- Fitted designer bedspread with queen bed comforter
- 300 lb. bunk rating

BATHROOM

- 12-volt power bath roof exhaust vent
- Wooden medicine cabinet with mirrored door
- Thetford® fresh-water flush toilet
- Wall-mounted towel bar
- Hand towel ring
- Tub surround (ABS)

SECURITY AND SAFETY

- LP leak detector
- Smoke detector
- Carbon monoxide detector
- Fire extinguisher
- Hitch light (travel trailers)
- Amber patio light
- Welded heavy duty safety chains (travel trailers)
- Electric brakes (all wheels)
- GFI receptacles

WILDWOOD OPTIONS

- Black frame safety glass tinted windows
- 6 gal. gas/electric DSI water heater

- Exterior LP gas grill
- 13,500 or 15,000 BTU ducted air with quick cool
- Outside shower
- Stabilizer jacks (travel trailer (4) or fifth wheel (2))
- Electric front jacks (fifth wheel models)
- Decorative wallpaper border
- Double air hide-a-bed sofa in living room
- Insulated storage plus door with Jalousie Window (per floorplan)
- 56" air hide-a-bed sofa on U-shape dinette models
- Bedroom flip table
- Storage plus door (29QBBS, 31QBSS & 24BHSS)
- Cable TV hookup
- Skylight over tub
- 30 lb. LP bottles with cover and auto change (travel trailers)
- Living room carpet in front of slide only
- Jiffy sofa IPO lower bunk (30BHBS, 32BHDS, 29BHBS)
- Sliding glass patio door (29FKSS, 29FLSS)
- Double sink cover
- Countertop extension (per model)
- Double air-hide-a-bed
- Cooler slide system

Contact your Wildwood dealer for a complete list of options



AM/FM RADIO/CD PLAYER



BEAU FLOR™ DURABLE FLOORING
ALL VINYL NO PAPER



300 LB. BUNK RATING



TOY LOCK

322NCK The Wildwood Deluxe Series is all about Family Fun and Functionality. This trailer is the ultimate in destination living at a great value. The Deluxe is packed with great features including radial tires, ultra lube axles, black tank flush, heated and enclosed under belly, 84" head room, and 74" slide out head room to name a few. Comfort, convenience and quality is what The Wildwood Deluxe represents.



{GO WILD}



BASIL INTERIOR



LATTE INTERIOR



SADDLE INTERIOR



WHEAT INTERIOR

322NCK The Outside Kitchen is a popular option that includes a 110v refrigerator with freezer, sink, microwave, 2 burner cook top, cabinet doors and drawers for storage. (Outside kitchen option only available on 322NCK)



322NCK SHOWN WITH BASIL INTERIOR / FULTON CHERRY WOOD PACKAGE. EQUIPPED WITH THE 26" LCD TV OPTION.

84" interior height

Extra tall slide room
6'2" interior height



CSS
COOLER SLIDE SYSTEM

The cooler slide system option is great addition to your trailer. It comes with a cooler that is placed on our slider system that is located in the front baggage door. It conveniently slides in for storage and out for enjoyment. (only available on front queen bed models)

322NCK The bunk room slide out provides plenty of space for sleep and play. It includes an entertainment center with cable hook up. It also includes a wardrobe, drawers and ladder to access top bunk above the entertainment center. (Shown with TV supplied by customer)

Wildwood
DLX

11

322NCK SHOWN WITH BASIL INTERIOR/ FULTON WOOD PACKAGE



322HBK A huge walk through bathroom featuring a double medicine cabinet and a neo angled shower. It also includes a porcelain foot flush toilet standard.

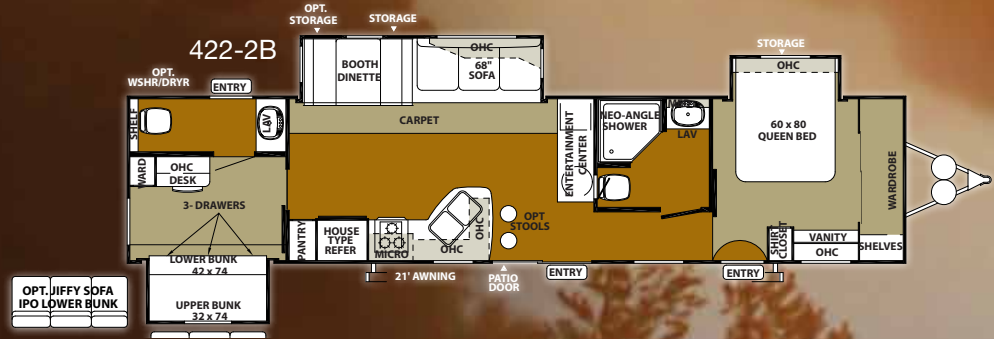
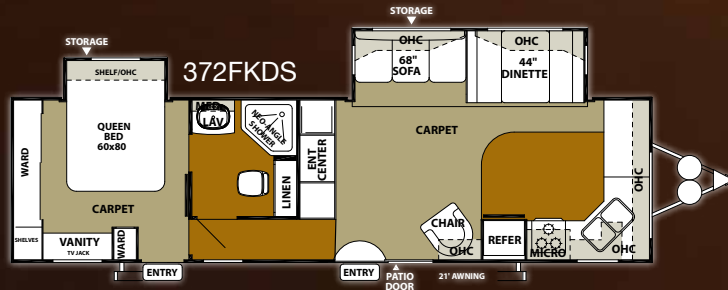
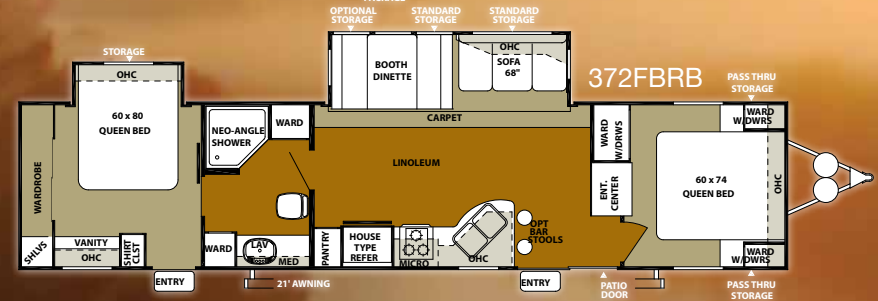
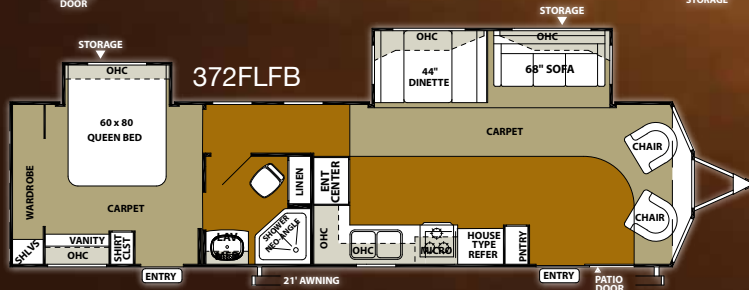
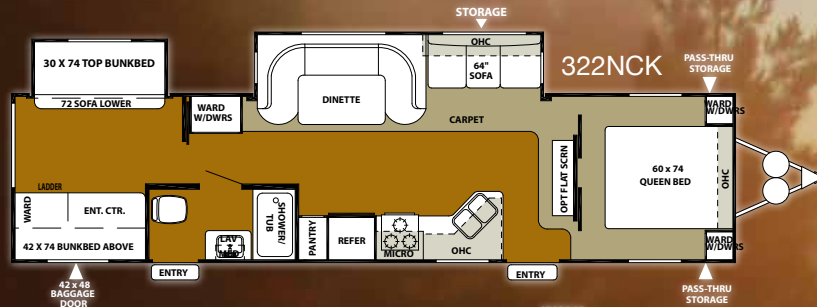


322HBK SHOWN IN WHEAT INTERIOR/PALISADES CHERRY WOOD PACKAGE. THIS SPACIOUS REAR KITCHEN MODEL HAS FANTASTIC COUNTER TOP SPACE AND KITCHEN CABINET STORAGE.



The pull out spray handle kitchen faucet allows for easier and more flexible use around the sink. The self edged counter-tops are seamless which will prevent spills from seeping into the framework of the countertop.

{WILDWOOD DELUXE SLIDE OUT TRAVEL TRAILER STANDARDS/OPTIONS}



13



MODEL 322NCK
SHOWN WITH OPTIONAL OUTSIDE KITCHEN

{WILDWOOD DELUXE SPECIFICATIONS}

	322NCK	322HBK	372FLFB	372FBRB	372FKDS	422-2B
HITCH WEIGHT lb	1280	1000	1210	TBA	910	1185
AXLE WEIGHT	7700	7720	7495	TBA	7465	8925
DRY SHIP WEIGHT	8980	8720	8705	TBA	8375	10110
GWWR	11440	11160	11370	TBA	11070	13185
CCC cargo capacity	2400	2381	2606	TBA	2636	3016
EXT LENGTH	38' 3"	36' 4"	38' 5"	42' 0"	36' 8"	42' 2"
EXT HEIGHT	11' 9"	11' 9"	11' 9"	11' 9"	11' 9"	11' 9"
INT HEIGHT	84"	84"	84"	84"	84"	84"
FRESH WATER CAP gal	42	42	42	42	46	42
BLACK WATER CAP gal	32	43	32	35	43	35
GREY WATER CAP gal	43	64	43	43	43	43
TIRE SIZE in	15"	15"	15"	15"	15"	15"
AWNING SIZE ft	21'	21'	21'	21'	21'	21'

COMFORT AND CONVENIENCE

- 84" interior height
- Black framed safety glass tinted windows
- Water heater by-pass
- 6-gallon gas/electric DSI water heater
- Double entry doors (most floorplans)
- Pass thru storage (per floorplan)
- Dometic® 13,500 BTU central air conditioner with quick cool feature
- In-floor ducted heat with 35K BTU furnace
- Stain resistant carpet with padding
- Flush-floor slide rooms
- Systems monitor panel
- Mortise and Tenon cabinet doors
- 6' 2" tall slide rooms
- Black tank flush
- Ultra lube axles
- Solid wood drawer fronts with ball bearing drawer glides
- 2 outside speakers
- "Beau" (non-linoleum) wood grain flooring

KITCHEN

- 12-volt power range hood with light
- Microwave with carousel (black)
- Acrylic 60/40 residential style kitchen sink
- Sink cover
- Built in knife holder

- Kitchen base cabinet with recess at floor level
- 3 burner Piezo ignition range oven
- Delta (style) riser/sprayer faucet at kitchen sink
- Kitchen waste basket
- Pantry with removable shelves
- Mission style hardware cabinet doors and drawer fronts
- Lazy susan in kitchen (some models)

LIVING ROOM

- Swivel rocker chair(s) (per floorplan)
- AM/FM/CD stereo system with remote control
- Surround sound TV hook-up
- TV antenna with booster
- Cable and satellite ready
- Extra large picture window at dinette
- Extra large 44" pedestal dinette for more comfortable dining and sleeping
- All wood slide-out fascia
- Hard lambrequin valance
- Decorative lights mounted in slide-out

BEDROOM

- Fitted bedspreads and bunkspreads
- Bedroom roof vent
- Plywood bunk platforms
- Lift-up beds with gas struts (per floorplan)
- 300 lb. bunk rating
- Cable TV hook-up
- Stain resistant carpet with padding

- Privacy doors or sliding curtain (per floorplan)

BATHROOM

- Built-in wood medicine cabinet and mirror
- Ceiling light with convenient wall switch
- China foot flush toilet(s)
- ABS tub and shower with one-piece surround

EXTERIOR

- Smooth fiberglass radius baggage doors with thumb pulls and holdbacks
- A & E side awning one-piece vinyl
- Diamond plate rock guard (travel trailers)
- Steel framed 30" smooth fiberglass radius entry door
- 15" radial tires
- Entry assist handle
- 30 lb. double LP tanks with automatic change over and EZ access
- LP tank cover (travel trailers)
- City water fill with valve

CONSTRUCTION

- 10" Extruded I-beam frame
- Cambered chassis
- Fresh water tank
- 2" x 3" floor joists 12" on center
- 5/8" 5-ply tongue and groove plywood floor decking
- 2" wall studs maximum 16" on center

- Steel framed 6' entrance doors
- 5" bowed truss roof rafters
- 3/8" walk-on roof decking
- Seamless one-piece rubber roof w/ 12 year warranty
- R-7 insulation

SECURITY AND SAFETY

- Smoke detector
- Fire extinguisher
- Carbon monoxide detector
- LP gas leak detector
- Main entry step light with interior switch
- Amber porch light with interior switch
- Main entry doorside scare light
- Screen door with safety latch
- GFI receptacles and covered patio outlet
- Welded heavy duty safety chains (travel trailers)
- Hitch light (travel trailers)
- E-Z open entry steps
- Lockable fiberglass radius baggage doors

POPULAR OPTIONS

- Glass shower door (most models)
- Cooler slide system
- Fiberglass exterior
- Patio door (some models)
- 10-gallon gas/electric DSI water heater
- Skylight over tub
- Bi-fold shower door (322NCK)

- Garden shower with glass door (per floorplan)
- Garden tub glass door (per floorplan)
- Extra large 8 cu. ft. double door RV refrigerator
- Double sofa air hide-a-bed
- Free standing dinette with 4 chairs and flip leaf
- Phone jack
- Bar stools (per floorplan)
- Stabilizer jacks
- Detachable hitch
- Outside shower
- Slide room awning(s)
- Spare tire, carrier and cover
- Exterior LP gas grill
- Double insulation (floor and roof)
- Cloth pull down night shades
- Thermostatically controlled heated holding tanks



STANDARD PORCELAIN FOOT FLUSH TOILET



30" RADIUS ENTRY DOOR



CSS
COOLER SLIDE SYSTEM



REAL WOOD TOE KICK



BALL BEARING DRAWER GLIDE



BLACK TANK FLUSH

{FOREST RIVER'S HALLMARK OF EXCELLENCE}



THAT'S 20,000 SQUARE FEET OF QUALITY ASSURANCE.
THE BARE ESSENTIALS FOR A PREMIUM PRODUCT.

Brought online in 2005, Forest River is proud of its state-of-the-art test facility. This beautiful building blends many of the old tried and true methods of testing our diverse types of RVs with new innovative ways of solving quality issues. Being centrally located to most Forest River manufacturing facilities, this 20,000 square foot PDI (Pre-delivery Inspection) test building gives immediate daily feedback to individual managers. This assures the production facilities that nothing has slipped by the plant's quality assurance personnel and the units are "green" and ready to ship.

PEACE OF MIND.
FOREST RIVER HAS YET ANOTHER EXCLUSIVE FEATURE TO OFFER: ONE YEAR OF FREE ROADSIDE ASSISTANCE WILL BE GIVEN TO EVERY NEW WILDWOOD CUSTOMER. THIS IS JUST ONE MORE WAY TO SAY "THANK YOU" AND TO ENSURE AN ENJOYABLE TRAVELING EXPERIENCE.



Forest River, Inc.
914 C.R. 1
Elkhart, IN 46514
(574) 533-5934
www.forestriverinc.com
www.forestriveraccessories.com

All specifications contained herein are based on the latest product information at time of printing. Forest River reserves the right to make changes in colors, materials, equipment and specifications at any time without notice and assumes no responsibility for any errors in this brochure. PIP041808

Wildwood
Welcome to Our Family of Quality Built Products
Nobody has you covered like us.

Wildwood
Heritage

Wildwood
Legend

Wildwood
Freedom

Call camping by it's first name "Wildwood!"

FOREST RIVER ENCOURAGES YOU TO BUY LOCALLY

Forest River, Inc. strongly encourages our retail customers to purchase from their local dealership whenever possible due to the following factors:

- Our dealers are as a rule, independently owned and operated businesses. Outside of those customers they personally sold products to, they are not contractually obligated to perform warranty service on Forest River products that were purchased elsewhere. There may be an occasion that you would be required to return to the point of purchase to satisfy warranty requirements.
- Although many dealerships will eventually service products not purchased at their place of business, they will usually take care of their customers and other Forest River customers who are traveling away from their local dealer as they would their own.
- Local purchases allow a customer to establish a relationship with a dealer close to home. This relationship provides the customer with a convenient location for service and support from a "home town" professional.
- The opportunity for a thorough PDI (Pre Delivery Inspection) and product orientation is an additional benefit of buying from your local dealer. Further providing the opportunity for refresher courses or the ability to get questions answered much more conveniently.
- For our Canadian customers, there are also requirements which must be met to bring an RV purchased out of the country to their home. Although not insurmountable, these requirements may involve such things as additional inspections and certifications, taxes and fees. Your local Canadian Dealer is a professional at meeting these requirements.

Forest River's goal is for all RV Owners to fully enjoy their RV experience. In light of this goal, and considering the advantages of buying local, we encourage you to be thorough when determining what product to purchase and which dealer to purchase it from as both are key to your ultimate satisfaction and the realization of your dreams.