

The Name in Family Friendly and Affordable Fun!

SALEM

The Name in Family Friendly and Affordable Fun!



SALEM

26TBUD in Latte (TV Optional)



26TBUD
Bunk Area

Salem has been one of the top sellers in it's class for several years, and for several reasons. From our quality construction to our professionally decorated interiors Salem is sure to remain an industry leader for years to come. Pictured above is the Salem 26TBUD. This floor plan boasts a triple bunk sleeping arrangement, an oversized u-shape dinette and a full walk around queen size bed in the master bedroom to allow for maximum sleeping capacity. Fortunately we are still able to offer the abundant storage capacity Salem is known for.

27RKSS in Godiva



27RKSS/27RLSS
Bathroom

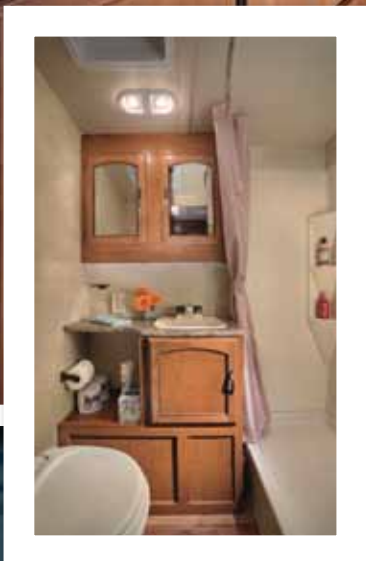


36BHBS Bedroom



36BHBS
Bunk Area

24RLSS in Pomegranate



24RLSS
Bathroom



INTERIOR FEATURES



30QBSS shown with Pewter interior

- A. Overhead Cabinet 14" Deep for Large Plates
- B. Huge Storage Drawer at Base of Dinette
- C. 80" Interior Height
- D. (4) Cube Speaker Sound System
- E. High Definition Self Edge Countertops
- F. Digital Thermostat

- G. Decorative Overhead Dining Light
- H. Solid Woodframe Mortise and Tenon Doors
- I. High Rise Faucet and 60/40 Sink
- J. U-Dinette (Bunk Models)
- K. Residential Size Microwave
- L. 3-Burner Range with Oven and Vent Hood

- M. Mini Blinds
- N. Beauflor® Linoleum (7 Year Limited Wear and Cold Crack Warranty)
- O. Residential Style Carpet
- P. 26" LCD TV (Optional)
- Q. Full Extension Ball Bearing Drawer Guides

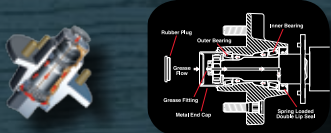
CONSTRUCTION STANDARDS



Rest assured your unit is built with pride and integrity by our dedicated team of craftsmen.



E-Z LUBE
BEARING LUBRICATION SYSTEM



The E-Z Lube system allows grease to flow with ease to both the outer and inner bearings for a complete repack. No disassembly required.

- | | | | |
|---|---|--|---------------------------|
| A. Main Triple Entry Steps | F. .024 Aluminum Siding | L. Smooth Rolled Skirting | R. Stain Resistant Carpet |
| B. 2" X 3" Floor Joists 12" on Center | G. 5" Bowed Truss Roof Rafters | M. Ducted Heat | S. Hitch light |
| C. 5/8" 5-Ply Tongue & Groove Plywood Floor Decking | H. Seamless Rubber Roof (12 yr. Warranty) | N. Diamond Plate Rockguard | T. E-Z Lube Axles |
| D. 2" Wall Studs 16" or Less on Center | I. R-7 Fiberglass Insulation Throughout | O. 3/8" Roof Decking (Full Walk-On Roof) | U. Premium Graphics |
| E. Radius Fiberglass 30" Entry Door | J. Extra Large Full Pass Thru Storage | P. LP Bottle Cover w/ Easy Access | |
| | K. Clamp Ring Safety Glass Windows | Q. 13.5K Ducted Roof A/C | |

SALEM FEATURES



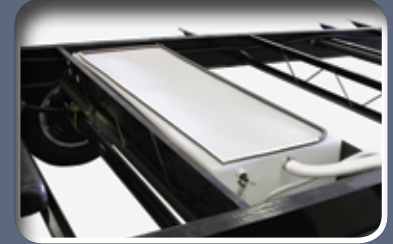
Self Edge Countertops



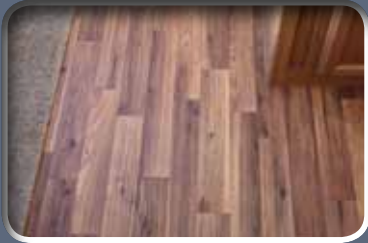
High Rise Faucet and 60/40 Sink



Extra Large Pass-Thru Storage



Heated and Enclosed Fresh Water Tank



Beauflor™ Durabac Flooring
(7 yr. limited wear and cold crack warranty)



Full Extension Ball Bearing
Drawer Guides



Extra Large Pot and Pan
Drawer at the Dinette Base



26" Spin Around TV Ent. Center
(select floorplans-shown with
optional TV)



The Standard Exterior Kitchen on the 30KQBSS and 32BHDS is a Great Way for the Camp Chef to Enjoy the Great Outdoors.



Oversize Storage Drawer(s)
Under the Sofa



Silverware Drawer



6 Gallon G/E DSI Water Heater
with Quick Recovery



Command Center

SALEM

STANDARDS AND OPTIONS

CONSTRUCTION AND EXTERIOR

- Full Walk on 1 Piece Rubber Roof w/ 12yr.Warranty
- Extra Large Full Pass Through Storage (per floorplan)
- E-Z Lube Axles
- A & E Awning with one piece vinyl
- Safety Glass Windows
- Steel Framed 30" Smooth Radius Fiberglass Main Entry Door
- Fender Skirts
- Powder Coated I-beam frame
- Cambered Chassis
- Enclosed Fresh Water Tank in a Heated Compartment
- 6-Gal. Gas/Electric DSI Water Heater
- Water Heater By-pass
- Nitrogen Filled Tires
- 2" Wall Construction 16" (or less) on Center
- R-7 Fiberglass Insulation Throughout
- 13 ply Cross Micro-Laminated Beam Header above Slide-outs
- Triple Sealed Slideouts
- Electric Slide-Out Systems (Flush Floor)
- Swing Arm Entry Assist Handle
- Two Marine Grade Exterior Speakers
- Electric Front Jacks (Fifth Wheels)

KITCHEN

- Dometic® Double Door Refrigerator (2 yr.Warranty)
- High Rise Faucet
- Deep Basin 60/40 Residential Style Sink
- Microwave with Carousel
- 3-Burner, High Output Range with Oven (2 yr. Warranty)
- Range Hood with 12-Volt Exhaust Fan and Light
- Beauflor™ Durabac Flooring (7 yr.Warranty)
- Self Edge Kitchen Countertops
- Solid Wood Drawers
- Knife Rack (behind cooktop)
- Large Overhead Cabinets
- Wall-Mounted Systems Convenience Panel
- Oil Rubbed Bronze Hardware
- Full Extension Ball Bearing Drawer Guides
- Abundant Cabinet Storage

LIVING ROOM

- 80" Interior Height Travel Trailers (84" Fifth Wheel models)
- Ducted 13,500 BTU Roof Air Conditioner w/ Quick Cool
- Large Storage Drawer(s) at Sofa Base (Select Models)
- Extra Large Pedestal Booth Dinette w/ Large Drawer (Most models)
- Large Dinette Picture Window
- Digital TV Antenna and Booster
- Standard AM/FM Stereo w/ CD and 4 Cube Speakers
- Extra Large Overhead Cabinets
- Patio Door with Vertical Blinds (37BHSS2Q, 36BHBS)
- Decorative wall light
- 25K BTU Suburban Forced Air DSI Furnace with Digital Thermostat (2 yr.Warranty)
- In-Floor Ducted Heat

BEDROOM

- Evergreen Mattress
- Plush Comforter and Headboard
- Strut Lifted Storage Area under Bed
- Bedside Mirrored Wardrobes with Shelf
- Bedside 110v Power Outlets (2)
- Solid Bedroom Privacy Doors (Most Models)
- Storage Shelf Above Bed

BATHROOM

- 12-Volt Power Bath Roof Exhaust Vent
- Wooden Medicine Cabinet with Mirrored Door
- Thetford® Fresh-Water Flush Toilet
- Tooth Brush Holder and Towel Ring
- Vinyl Tub Surround

SECURITY AND SAFETY

- LP Leak detector
- Smoke Detector
- Carbon Monoxide Detector
- Fire Extinguisher
- Hitch Light (Travel Trailers)
- Amber Patio Light
- Welded Heavy Duty Safety Chains (Travel Trailers)

- Electric Brakes (all wheels)
- GFI Receptacles
- ANSI 119.2 Certified
- Meets all National Highway Administration Specifications

SALEM OPTIONS

- Stabilizer Jacks (Travel Trailer (4) or Fifth Wheel (2))
- Cable TV/Satellite Hook-up
- Optional Fiberglass Front Cap (Fifth Wheels)
- Skylight over Tub
- 30-lb LP Bottles with Cover and Auto Change Over (Travel Trailers)
- Neo-Angle Glass Shower w/ Tub Surround (27RLSS, 27RKSS, 30FKBS, 36BHBS, 37BHSS2Q)
- 15,000 BTU Ducted Air w/Quick Cool

Contact your Salem dealer for a complete list of options

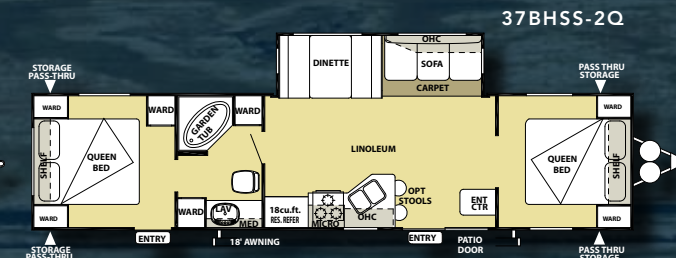
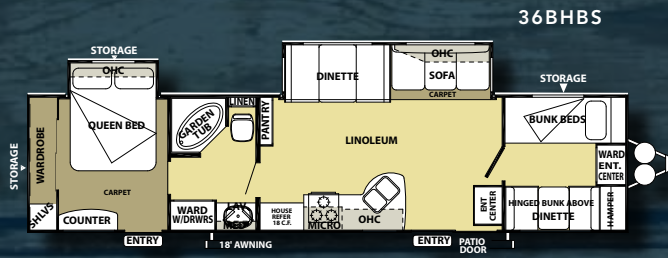
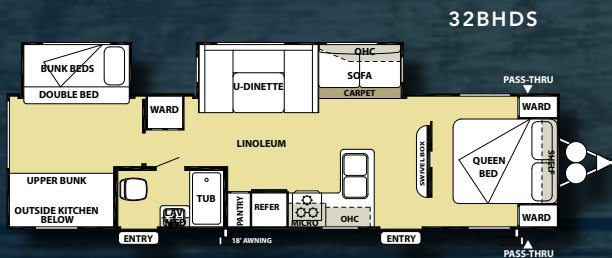
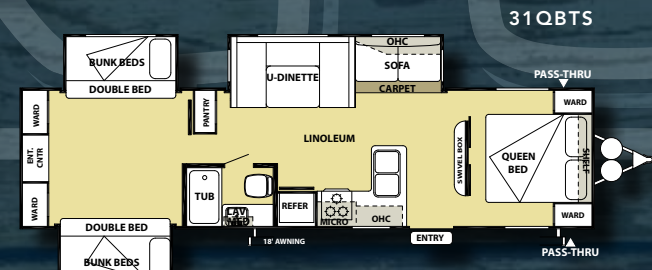
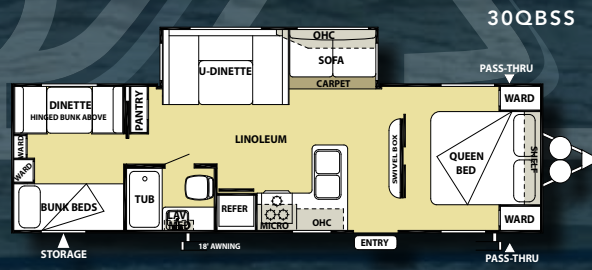
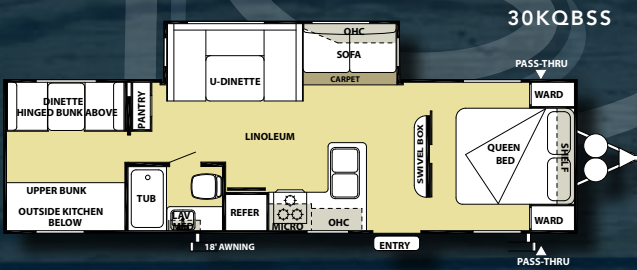
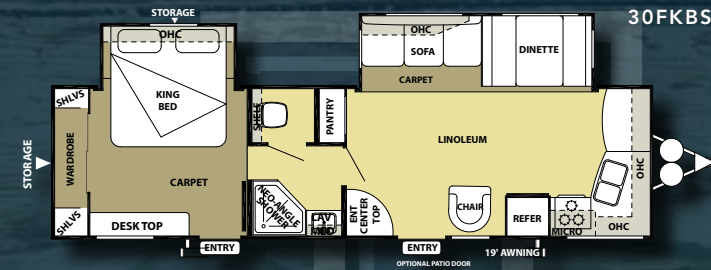
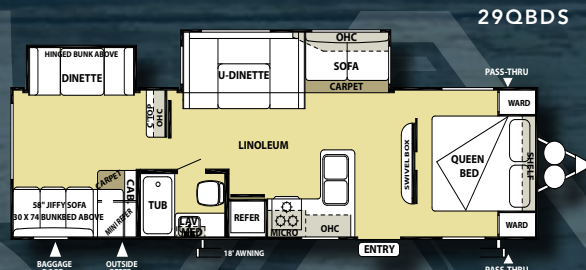
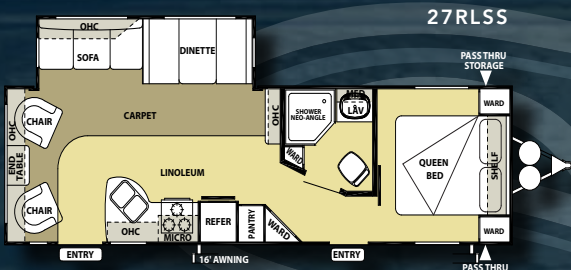
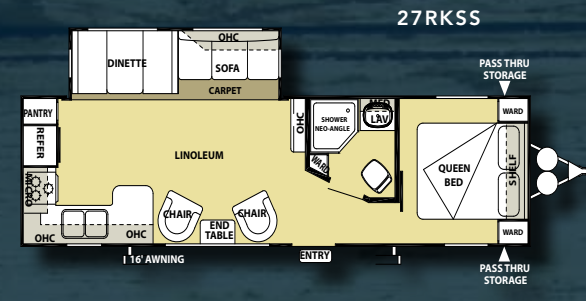
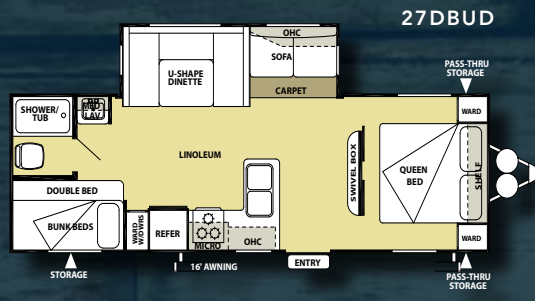
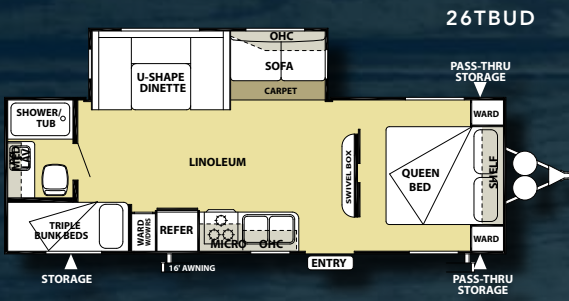
The aerodynamic shape of the Salem reduces wind resistance, resulting in a smoother ride and better gas mileage.



FLOOR PLANS AND SPECIFICATIONS

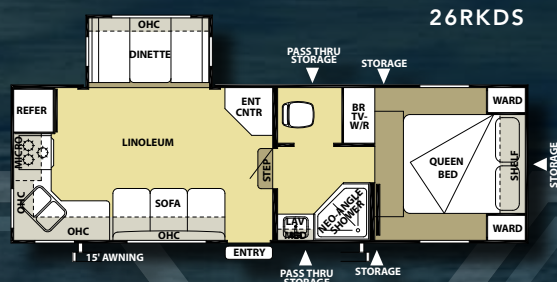
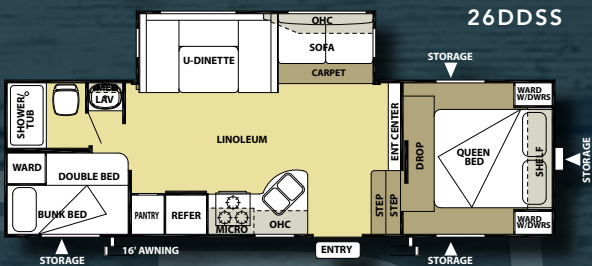
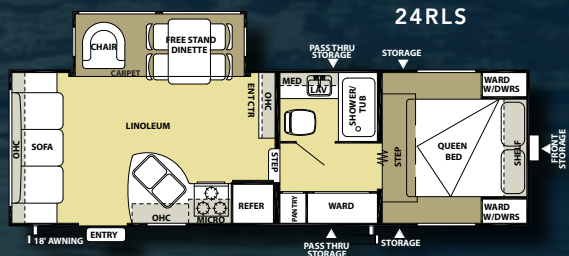
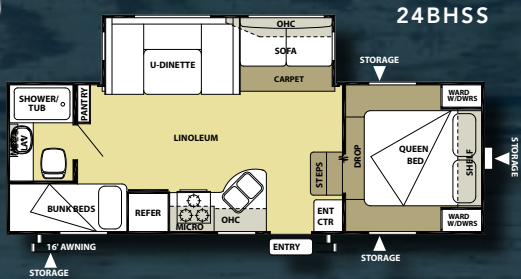


TRAVEL TRAILERS



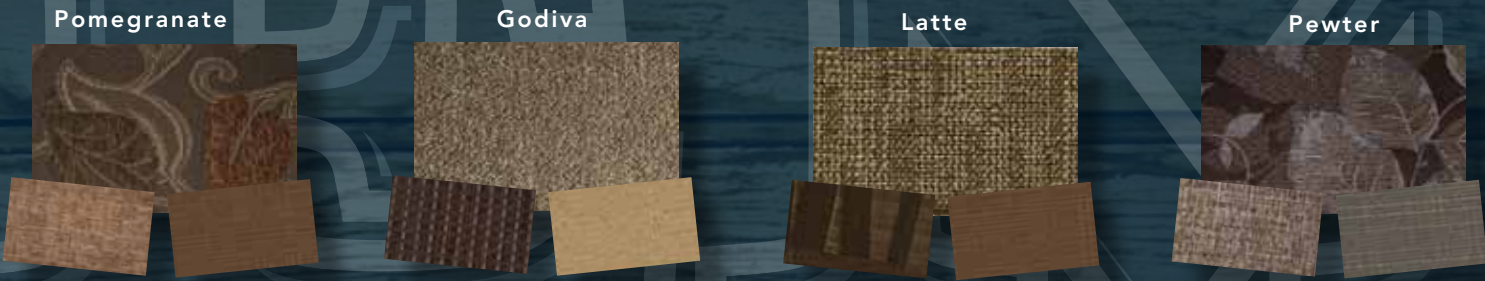
*Pillows and Spreads on Bunks represented on floor plans are for representation purposes only and are not included with your new unit.

SALTEMI



The Optional Fiberglass Front Cap on the Salem Fifth Wheel Provides an Automotive Look and Better Towability.

DECOR OPTIONS



SPECIFICATIONS

| MODEL | 26TBUD | 27DBUD | 27RKSS | 27RLSS | 29QBDS | 30FKBS | 30KQBSS | 30QBSS | 31QBTS | 32BHDS | 36BHBS | 37BHSS2Q | 24BHSS | 24RLS | 26DDSS | 26RKDS |
|-------------------|--------|--------|--------|--------|--------|--------|---------|--------|--------|--------|--------|----------|--------|--------|--------|--------|
| Hitch Weight (lb) | 815 | 772 | 720 | 605 | 899 | 832 | 899 | 980 | 885 | 859 | 720 | 970 | 1050 | 1152 | 1238 | 1316 |
| Axle Weight | 4915 | 5392 | 5635 | 4325 | 6019 | 6822 | 5985 | 5595 | 7255 | 7096 | 7171 | 6630 | 5001 | 5509 | 5293 | 5189 |
| Dry Ship Weight | 5730 | 6164 | 6355 | 4930 | 6918 | 7654 | 6884 | 6575 | 8140 | 7955 | 7891 | 7600 | 6051 | 6661 | 6531 | 6505 |
| CCC (Cargo Cap.) | 2047 | 1549 | 1327 | 2637 | 4082 | 3279 | 4116 | 4565 | 2846 | 3026 | 2929 | 3092 | 1960 | 1453 | 1433 | 1779 |
| Ext Length | 28' 8" | 29'6" | 33'3" | 32'2" | 34'0" | 34'9" | 33'0" | 33' 2" | 35'6" | 35'8" | 36'7" | 39' | 26' 2" | 27'6" | 28' | 27'8" |
| Ext Height | 11'2" | 11'2" | 11'2" | 10'11" | 11'2" | 11'2" | 11'2" | 11'2" | 11'2" | 11'2" | 11'2" | 11'2" | 11'10" | 11'10" | 11'10" | 11'10" |
| Fresh Water Cap | 40 | 40 | 40 | 40 | 42 | 42 | 42 | 42 | 40 | 40 | 42 | 42 | 42 | 40 | 42 | 42 |
| Black Water Cap | 32 | 32 | 32 | 35 | 27 | 27 | 27 | 27 | 34 | 32 | 27 | 27 | 27 | 32 | 27 | 27 |
| Grey Water Cap | 34 | 34 | 69 | 69 | 30 | 30 | 30 | 30 | 35 | 66 | 30 | 30 | 30 | 64 | 30 | 30 |
| Tire Size (in) | 15" | 15" | 15" | 15" | 15" | 15" | 15" | 15" | 15" | 15" | 15" | 15" | 15" | 15" | 15" | 15" |
| Awning Size (ft) | 16' | 16' | 16' | 16' | 18' | 21' | 21' | 21' | 21' | 16' | 21' | 21' | 16' | 16' | 21' | 16' |

JOIN THE SALEM FAMILY OF QUALITY BUILT AND AFFORDABLE RV'S



Forest River, Inc. encourages our customers to purchase their Forest River products from a local dealership whenever possible for the following reasons:

It is the goal of Forest River, Inc. that all of our RV owners fully enjoy the RV experience and that customer satisfaction meets or exceeds their expectations!

- 1) Forest River, Inc. dealers are independently owned and operated businesses so priority service and scheduling is at their discretion and is often provided to customers that purchased their unit at that dealership.
- 2) Purchasing locally allows customers to establish meaningful relationships with a dealer, enhancing the RV experience through assistance with product questions, user tips or RV regulations for your state or country, and much more!
- 3) Canadian customers must meet requirements to bring an RV purchased out of the country to their home. These requirements may involve additional inspections and certifications, taxes and fees. Your local Canadian Dealer is a professional at meeting these requirements.
- 4) Scheduling timely warranty repairs and adjustments through a local dealership provides far greater flexibility and convenience to you, the customer!



PRE-DELIVERY INSPECTION FACILITY

20,000 square feet of quality assurance. The bare essentials for a premium product. This state-of-the-art facility gives immediate daily feedback to production for quality assurance in every unit built.

PEACE OF MIND.

Forest River has yet another exclusive feature to offer: One year of free roadside assistance will be given to every new Salem customer. This is just one more way to say "Thank you" and to ensure an enjoyable traveling experience.



Learn More

Scan this barcode using a QR Reader on your smart phone to learn more about Forest River.



A Berkshire Hathaway company.

Forest River, Inc.
55470 C.R. 1
Elkhart, IN 46514
(574) 389-4600
www.forestriverinc.com/salem
www.forestriveraccessories.com

