

Montana

MOUNTAINEER



Hickory Edition

Woodland Decor



345DBQ

Experience the Mountaineer "Hickory Edition"

Take the kids and their friends camping with the Mountaineer 345DBQ. This family friendly floor plan includes a rear bedroom with quad bunk beds, wardrobe and a half bathroom that is accessible from the bunk room or living area.

The 345 DBQ rear bedroom has a wall mounted 19" LCD HD TV for the kids.

The 345 DBQ kitchen has a solid surface counter top with a deep sink, molded back splash and high profile faucet. Residential linoleum covers the high traffic area leading to the rear bedroom and half bath room. The 12 foot wrap around super sofa booth is optional on every floor plan.



345DBQ

Walnut Decor



324RLQ

Mountaineer's 324RLQ has solid hardwood slide out facia, deep overhead cabinets and an optional free standing dinette with a leaf extension and sliding table top.



324RLQ

Mountaineer's 324RLQ has abundant counter space with lots of storage! Other highlights include a 22" oven and a large 8 cubic foot double door refrigerator.

Walnut Decor



Mountaineer's 326RLT features a spacious, slide out entertainment center with a 32" LCD HD television and CD/DVD player. The large desk, triple drawer stack and deep overhead cabinets create a fantastic work station. The large rear window brightens the living area with plenty of natural light and is equipped with day/night shades. Plush recliners are standard in every rear lounge and rear kitchen Mountaineer floor plan.

326RLT



326RLT

The master bedroom has over size drawers with full extension metal drawer guides. The roomy front closet features cedar lining and full length, mirrored sliding doors. The cabinet beside the closet is prepped for a washer and dryer.

Mountaineer Decors "Hickory Edition"



Walnut



Sable



Woodland



326RLT

The bathroom features a medicine cabinet with bright, decorative lights. Enjoy the large garden tub shower with molded shelves, adjustable height shower head and oil rubbed bronze glass enclosure.

1. Rear Ladder
2. 15,000 BTU AC
3. One-Piece EPDM Rubber Roof with 12 Year Warranty
4. Aluminum Radius Roof Transition Molding
5. 3/8" Roof Decking
6. R-14 Fiberglass Insulation
7. Aluminum Wrapped AC Duct
8. Ceiling Decking with Vinyl
9. 5" Fabricated Galvanized Steel Truss Rafters on 16" Centers
10. Extended length Rain Gutter

26. Electric Rear Jacks
27. DARCO Wrapped Main Floor Moisture Barrier
28. Fiberglass Insulation
29. One-Piece Fluted Polypropylene Fully Enclosed Sub-Floor
30. 3" Large-Capacity Heat Duct
31. Heavy Duty 8-Lug Wheels with Easy Lube Axles
32. Equa-Flex Suspension
33. Enclosed and Insulated Water Lines
34. Powder-Coated 10" Steel "Rolled" I-Beam
35. Residential Linoleum
36. Full Radius-Wrap Aluminum Enclosure
37. 3" Welded Aluminum Floor

38. Drop-Frame Chassis Design with Flat-Floor Storage
39. Dual 30 Lbs. LP Bottles on Each Side
40. Easy Access Adjustable Snap Jack Pins
41. 5/8" Seamless Floor Decking
42. Residential Carpet Pad
43. Residential-Grade Carpeting with Stain Protection
44. Extended Hitch Pin

SIDEWALLS R-9

11. Fold-Away Grab Handle
12. 30" x 74" Entry Door with Window
13. 2" Welded Aluminum Wall Studs
14. Interior Decorator Board
15. Electro-Galvanized Sheet (EGS) Metal Backing Strips
16. High Density Solid Block Insulating Foam
17. Luan Wall Board
18. 2nd Layer of Luan with Staggered Seams
19. Medallion Hi-Gloss Fiberglass
20. Heavy Duty Insulated Baggage Doors
21. Exterior Convenience Center
22. Electric Patio Awning
23. Security Light
24. Fiberglass Front Cap with Improved Turning Radius and Hitch Vision
25. Side-Mounted Hydraulic Selector Valves



Max Turn Front Cap Aerodynamics
 Mountaineer's front cap has been completely re-engineered utilizing an aviation style shape dramatically reducing the drag coefficient for maximum fuel economy.

LIVING AREA

All wood slide-out facia	HE
Residential carpeting and upholstery with fabric protector	S
Tall slide room with "plate depth" overhead cabinets	S
Dual swivel rocker recliner (na/ 345, 347)	S
Euro recliners with ottoman (347 only)	O
High back desk chair	O
Air mattress hide-a-bed sofa	M
Pleated day/night window shades	S
Deluxe oiled bronze decorative lighting	S
Free-standing end table with lamp	S
Decorative ceiling fan with 110V light Kit	M
Deluxe crown molding	S
12' wraparound super sofa booth	O
Jackknife sofa in place of (2) recliner/glidens (295 only)	O

BEDROOM

Deluxe innerspring 60" x 80" mattress	M
Quilted bedspread, two pillows with shams	S
Fabric headboard	S
Two bedside windows in the slide out	M
Dual reading lights over the bed	M
Ceiling mount co-ax and 12V outlet	M
19" ceiling mount LCD HD TV	O
3 drawer bedroom dresser with full extension drawer guides (most models)	S
Solid panel bedroom door(s) with oil rubbed bronze handles	S
Full width sliding mirror closet doors	S
Under-bed storage with lift-assist struts	S
Washer/dryer hookup (prep)	S

BATHROOM

Deluxe residential porcelain toilet	M
Larger residential-size bath sink	S
Tub/shower with oil rubbed bronze glass enclosure	S
Medicine cabinet – large mirrored door	S
Oiled bronze bath sink faucet	S
Oiled bronze vanity light	S
Full linoleum bath flooring	S
Solid panel doors with oiled bronze handles	S
Deluxe wood grain towel holder	S
12 volt fan in commode area	M
Sky dome over the tub	M

KITCHEN

Shaker style hickory cabinet doors	HE
Full Extension drawer guides	HE
Cabinet toe kicks	M
Lighted range hood with fan	S
Wide deep "hickory" drawers	HE
Solid surface countertops	HE
Dual sink with high rise faucet	M
Garbage can	S
Silverware tray	S
Power vent fan in kitchen/living room	S
Booth dinette with storage cabinet and drawer	S
Free standing dinette with 4 chairs	O

APPLIANCES

8 cu.ft. double door refrigerator	M
Deluxe microwave oven with exterior exhaust fan	M
15,000 BTU ducted roof air conditioner with wall-mount thermostat and "Quick Cool"	M
Electric fireplace (305, 324 or 326 Only)	O
2 nd 13,500 A/C	O
Wire and frame for 2 nd A/C	O
High-output range with automatic ignitor and 22" oven with broiler	M
Range Cover	M
32" LCD HD TV	HE
12 volt 19" bedroom LCD TV	O
12 volt 19" garage LCD TV (347 Only)	S
12 volt AM/FM/CD/DVD with surround sound	M
Digital TV antenna and booster	M
Power vent fan in bath/bedroom	O
Washer / dryer prep	M
RG-6 satellite prep	M

UTILITIES

Water heater by-pass kit	M
10-gallon gas/electric DSI water heater	M
Systems monitor panel	S
55 amp convertor	S
Generator ready (Onan 5.5 kw - LP Generator)	O
Onan Marquis Gold 5.5 kw - LP Generator (Requires Generator ready)	O
50 amp electrical service	M

EXTERIOR

8 lug, 16" wheels and Goodyear tires	M
Under mount spare tire and carrier	M
Equa Flex™ suspension	O
Aluminum wheels	O
Medallion™ high gloss sidewalls	HE
5" fabricated steel truss rafters	S
Max turn fiberglass front cap	HE
Block foam insulation in sidewall (R-9)	S
Residential fiberglass insulation in floor and roof (R-14)	S
Glacier package	M
Fully enclosed and heated underbelly	S
Enclosed and heated holding tanks and water lines	S
Hitch and security light	S
Extra wide 30" entrance door	S
Radius baggage doors with locking latches	S
Smooth-operating, easy-to-use entrance steps	S
Dexter E-Z Lube® axles	M
110v outlet and TV hook up	S
Outside speakers with control switch	M
Dual patio security lights	M
Black tank flush	M
Outside shower with quick connect hose	M
Slide awning package (double slides)	O
Slide awning package (triple slides)	O
Slide awning package (quad slides)	O
Dual pane windows	O
Deep tint safety glass windows	M
Drop frame pass through storage compartment	HE
Gen II easy set remote control system	HE
Electric rear stabilizer jacks	HE
Electric front stabilizer jacks	M
Exterior convenience center	HE
12 Volt electric awning	HE
Fold away entry handle	M
Rear roof ladder	M

MOUNTAINEER

M = Moving to Montana Package
 S = Standard O = Option HE = Hickory Edition
 Standards and Options are subject to change without notice.

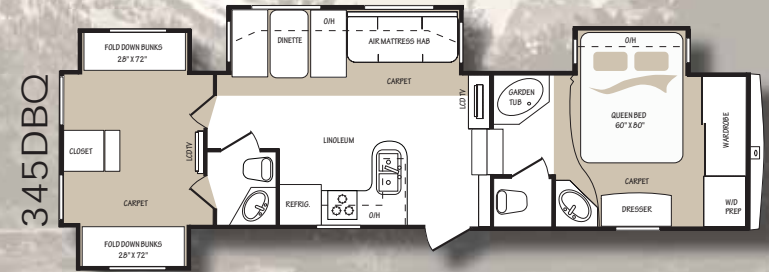
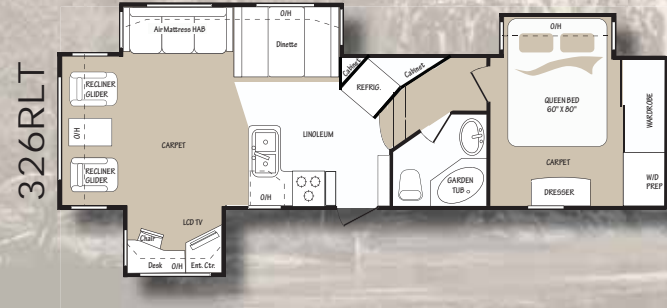
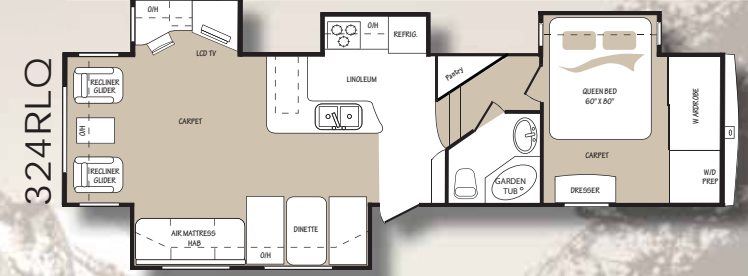
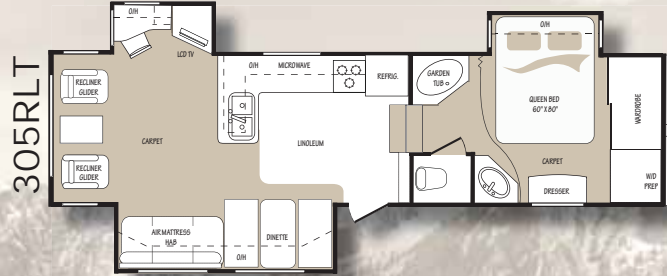
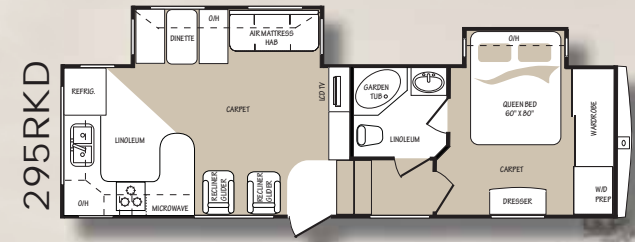
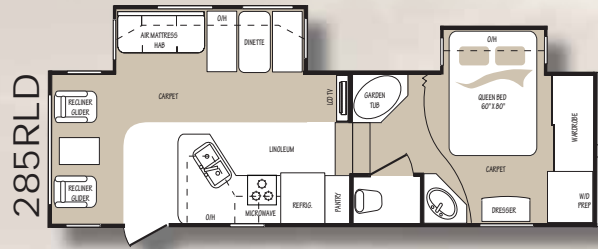
Packages

HICKORY EDITION PACKAGE

- Max turn front cap and radius frame
- Drop frame pass through storage Compartment
- Gen II Easy Set Remote Control System
- Electric Rear Stabilizer Jacks
- Exterior Convenience
- 12 Volt Electric Awning
- 32" HD LCD TV
- Medallion™ Hi-Gloss Sidewalls
- Solid Surface Kitchen Countertops
- Full Extension Drawer Guides
- Hickory Wood grain Cabinets
- All Wood Slide Out Fascia

MOVING TO MONTANA PACKAGE

- Queen (60 x 80) Innerspring Mattress
- Fabric Bedroom Headboard
- E-Z Lube® axles with 8 lug wheels
- (2) Bedside Windows in the Slide-Out
- 12 Volt AM/FM/CD/DVD with Surround Sound
- RG-6 Satellite Prep
- 15,000 BTU A/C with Quick Cool
- Air mattress hide-a-bed sofa
- 10 Gallon DSI 110/12 Volt Water Heater
- Ceiling fan with light kit
- 8 Cu. Ft. Large Double Door Refrigerator
- Glacier Package
- Digital TV Antenna with Booster
- Cabinet Toe Kicks
- Water Heater By-Pass
- Outside Speakers
- Black Tank Flush
- Microwave
- 22" Oven with Broiler
- Dual Patio Security Lights
- 50 amp service
- High Output Range with Ignitor
- Deep Tint Safety Glass Windows
- Sky dome over the tub
- Range cover
- Fold away entry handle
- Rear roof ladder
- Under mount spare tire and carrier
- Electric Front Jacks
- Outside Shower with Quick Connect Hose
- Power Vent Fan
- Double Sink with Hi-Rise Faucet
- Deluxe Porcelain Toilet
- Washer / dryer prep



Floor Plans

MOUNTAINEER

MODEL	285RLD	295RKD	305RLT	324RLQ	326RLT	345DBQ	347THT
Shipping Weight	9420	9895	10315	11115	10566	11154	10910
Carrying Capacity	4700	4335	3870	3200	3619	3236	3410
Hitch	2120	2230	2185	2315	2185	2390	2320
Exterior Length	31' 7"	33' 3"	34' 4"	35' 11"	35' 4"	36' 2"	36' 11"
Exterior Width	8'	8'	8'	8'	8'	8'	8'
Exterior Height - Top of A/C	12' 9"	12' 9"	12' 9"	13' 2"	12' 9"	12' 9"	12' 9"
Fresh Water Capacity	67	67	67	67	67	67	67
Waste Water Capacity	50	50	50	50	50	93	50
Grey Water Capacity	93	93	93	93	93	93	93
LPG Capacity (lb...)	60	60	60	60	60	60	60
Tire Size	235/80R16E	235/80R16E	235/80R16E	235/80R16E	235/80R16E	235/80R16E	235/80R16E

Hickory Edition



347THT Mountaineer "Toy Hauler"

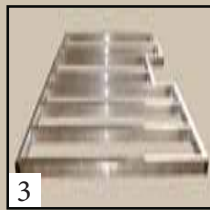


The roomy garage accommodates your favorite toys or extra gear. After unloading the toys, the dual Euro recliners and entertainment center, and turn the garage area into a den!

Mountaineer 347THT

- Ramp Door Opening ... 60" x 72"
- Garage Cargo 48" x 114"
- Ramp 72"
- Ramp Extension 48"

Features



1. Easy Set Remote Control System.
2. Washer / Dryer Prep.
3. Three Inch Welded Aluminum Floor Joists 16" on Center.
4. Pass Through Storage
5. Air Mattress Hide-A-Bed Sofa
6. Roof Vent
7. Weather Proof Outdoor Speakers
8. Convenience Center Provides Access to All Major Plumbing Functions and Enclosed Dump Valves.
9. Centralized Control Panel Contained within a glass door.
10. Tailgate Compatibility: No Need for Special Tail Gates.
11. Goodyear Tires with Optional Aluminum Rims.
12. Optional bedroom 19" LCD HD TV.
13. 32" LCD Television with swing bracket and digital antenna.
14. Redesigned Cabinet Doors with Tempered Glass.



"Ultimate Towability By Applying "Max Turn" Technology"



At Mountaineer, we have designed a patent pending integrated frame and cap design. Not only is it the most aerodynamic front cap, it's downright beautiful. With our "Max Turn" technology, making a 90 degree turn on the street is no problem. In fact, the Mountaineer has an incredible 79 degree truck to fifth wheel angle. It is the best in the industry. With the introduction of Mountaineer's "Max Turn", pulling or backing is no longer a burden.



Easy Set Remote Control System
Mountaineer's "Easy Set Remote Control System" simplifies setup and operation. The front and rear jacks, electric awning, hydraulic slide outs and patio security lights are all controlled from your key chain! All of these functions are also available using manual switches inside or outside of the unit.

**79 Degree
Turning Radius!**



2642 Hackberry Drive

Goshen, IN 46526

574-535-2100

www.keystone-mountaineer.com

Visit the Montana Owner's Club web site

Independently created and maintained by Montana fifth wheel owners.

www.montanaowners.com

MOUNTAINEER

Product information is as accurate as possible as of the date of publication of this brochure. Features, floor plans, and specifications are subject to change without notice. Please also consult Keystone's web site at keystonerv.com for more current product information and specifications. Tow Vehicle Disclaimer: CAUTION: Owners of Keystone recreational vehicles are solely responsible for the selection and proper use of tow vehicles. All customers should consult with a motor vehicle manufacturer or their dealer concerning the purchase and use of suitable tow vehicles for Keystone products. Keystone disclaims any liability or damages suffered as a result of the selection, operation, use or misuse of a tow vehicle. KEYSTONE'S LIMITED WARRANTY DOES NOT COVER DAMAGE TO THE RECREATIONAL VEHICLE OR THE TOW VEHICLE AS A RESULT OF THE SELECTION, OPERATION, USE OR MISUSE OF THE TOW VEHICLE. 08/09

Your Mountaineer Dealer:

