

Open Range



Light

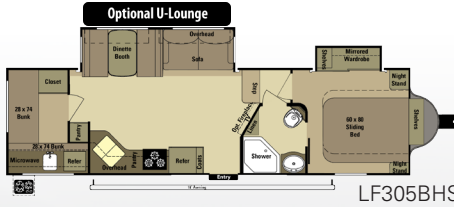
FIFTH WHEELS & TRAVEL TRAILERS

2015 MODEL YEAR

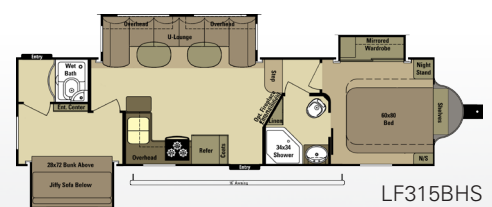
LIGHT FIFTH WHEELS



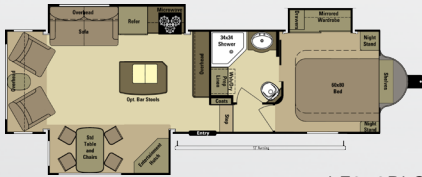
LF297RLS



LF305BHS



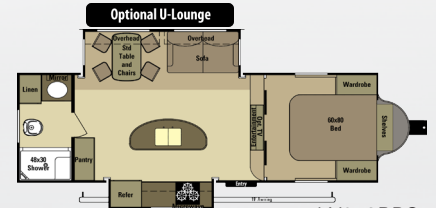
LF315BHS



LF318RLS



LF319RLS



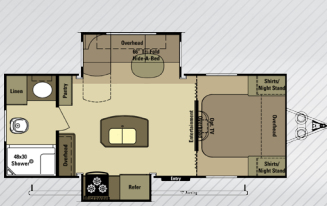
LX249RBS



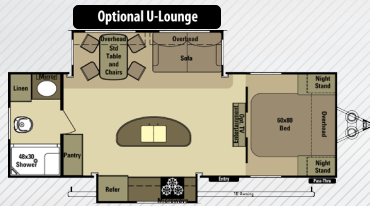
LX269BHS

	LF297RLS	LF305BHS	LF315BHS	LF318RLS	LF319RLS	LX249RBS	LX269BHS
UVW	7835	8305	8990	8220	8870	7640	8025
Hitch Wt.	1450	1555	1405	1570	1240	1042	1055
Length	31'3"	34'8"	35'5"	33'5"	35'2"	30'9"	31'11"
Gross NCC	2160	1690	2005	1775	2125	1727	1355

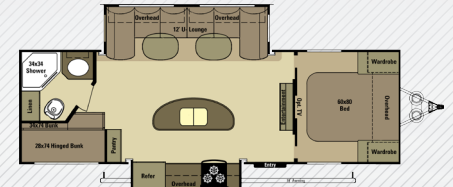
LIGHT TRAVEL TRAILERS



LT216RBS



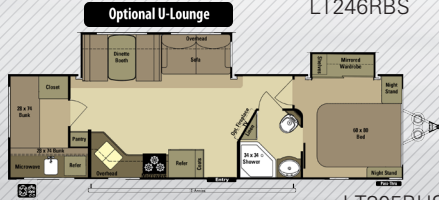
LT246RBS



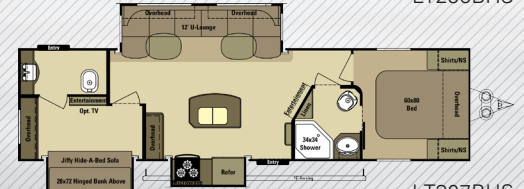
LT256BHS



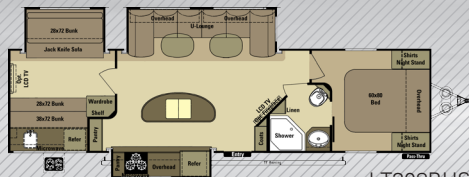
LT274RLS



LT305BHS

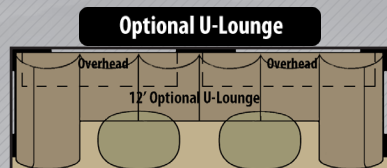


LT307BHS



LT308BHS

	LT216RBS	LT246RBS	LT256BHS	LT274RLS	LT305BHS	LT307BHS	LT308BHS
UVW	6050	6480	6995	6660	7340	8395	8510
Hitch Wt.	745	615	820	800	900	1025	940
Length	25'6"	29'6"	30'8"	31'3"	34'4"	36'1"	36'10"
Gross NCC	1970	2085	2190	1983	1994	1983	1983



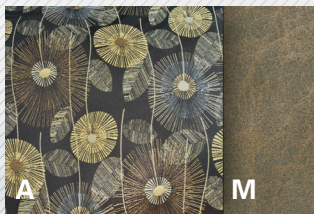
At Highland Ridge RV, Inc., we are one of the few manufacturers that have a 2-Year Limited Transferable Warranty. Ensuring our customers that we will stand behind our product for twice the amount of time that other manufacturers offer.



US Patent #8,419,037

90 Degree Turn Radius in 1/2 Ton Truck w/5.5' Bed

DECOR OPTIONS



BLOOM

ACCENT

Sofa Accent
U-Lounge Back
Booth Back
U-Booth Back

MAIN

Sofa
Recliner
Booth Dinette
U-Booth/U-Lounge



DIEGO

ACCENT

Sofa Accent
U-Lounge Back
Booth Back
U-Booth Back

MAIN

Sofa
Recliner
Booth Dinette
U-Booth/U-Lounge



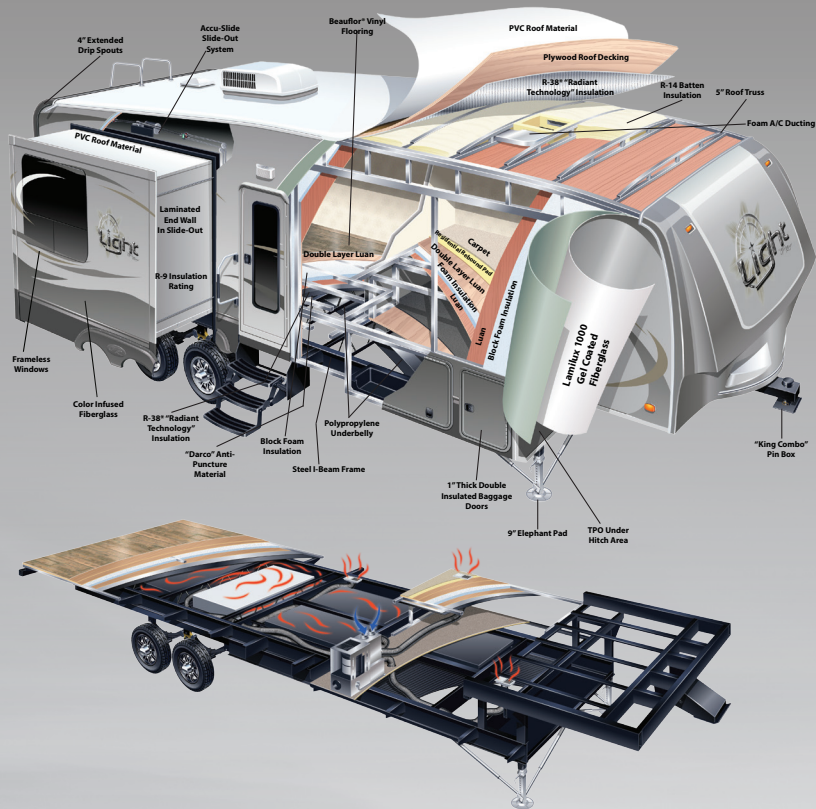
STEEL

ACCENT

Sofa Accent
U-Lounge Back
Booth Back
U-Booth Back

MAIN

Sofa
Recliner
Booth Dinette
U-Booth/U-Lounge



STANDARD FEATURES:

- Ext. Utility Center w/ Black Tank Flush
- Lippert Equa-Flex Suspension
- Porcelain Toilet w/ Foot Pedal Flush
- 90° Turn Radius in 5.5' Bed (FW)
- Stabilizing System
- Gel Coated Fiberglass Walls
- 60 Lbs of LP Capacity
- 100" Wide Body Frame
- PVC Roof Material
- Nitrogen Filled Radial Tires
- 50 Amp Service
- "King Combo" Pin Box (FW)
- "Maxx Air" Vent Cover
- 42" Deep Main Slide
- Washer/Dryer Prep (Select FWs)
- Power Tongue Jack (TT)
- Prepped for Back-Up Camera

EXECUTIVE PACKAGE: (MANDATORY)

- Flat Screen TV in Living Area
- 12V CD/DVD Player w/Bluetooth®
- USB/12V Charging Port
- Multi-Port Satellite Hook-Up
- Digital TV Antenna w/Booster
- LP Quick Connect
- Wired and Framed for 2nd A/C
- Western Aspen Cabinet Doors
- Concealed Hinges
- Power Awning w/ LED Awning Light
- 6 Gal. Gas/Electric Water Heater
- Fantastic Fan in Kitchen (FW)
- LED Lighting in Ceiling
- Crown Molding
- Full View Vented Entrance Door
- Frameless Windows

FOUR SEASONS PACKAGE: (MANDATORY)

- R-38 Insulation in Roof & Floor
- R-9 Insulation in Sidewall
- Atwood® High Performance Furnace
- Heated and Enclosed Underbelly
- Heated Storage Area (FW)
- Double Insulated Baggage Doors
- Digital Thermostat
- Insulated Slide Floors
- Heated & Enclosed Dump Valves

OPTIONAL FEATURES:

- 24" Bedroom TV
- Fireplace (Most Models)
- Dyson Vacuum Cleaner
- Fantastic Fan(s)
- 2 Bar Stools
- 2nd A/C (13.5k BTU Ducted)
- Dual Pane Windows
- BBQ Grill
- LP Generator Prep (FW)
- U-Lounge IPO Dinette/ Sofa (Select Models)
- Ottoman w/ Storage (U-Lounge Option)
- One-Piece Fiberglass Front Cap (TT)
- Power Front & Rear Stab Jacks (TT)
- Lock Arm Stabilizers
- 15k BTU Main A/C
- Two Additional Folding Chairs (Select Floorplans)
- Rear Storage Tray

**Please contact your local dealer to ensure availability of standards and options on a specific floorplan.



Highland
RIDGE RV

For more information visit us at:
www.HighlandRidgeRV.com

Due to continual research and advances, manufacturer reserves the right to change specifications, design, price, and equipment without notice, and assumes no responsibility for any error in the literature. Some items shown are not included as standard or optional equipment.

Your Light Dealer: