

KIEFER® HORSE TRAILERS



BUILT FOR YOU
WITH THE NEW STANDARD OF EXCELLENCE



(888) 254-3337 | www.kiefermfg.com

THE KIEFER® CHOICE

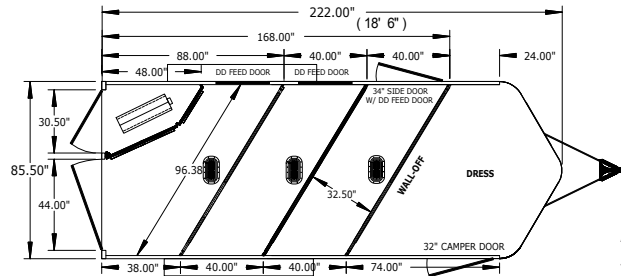
Kiefer Manufacturing horse trailers and trailers with living quarters are built with the user and passengers in mind. This provides proven performance and features that not only fit your individual needs, but the need for a safe and secure environment for your cargo.

Bumper Pull Trailers



SLANT LOAD 2,3 and 4-horse models available

These all-aluminum trailers feature a smooth aluminum exterior, aluminum roof and aluminum floor. This model features a saddle rack and an optional separate dressing room. Outside tie loops are installed on both sides of the trailer, (1) per horse, providing more options for locating your trailer or tying off at events.

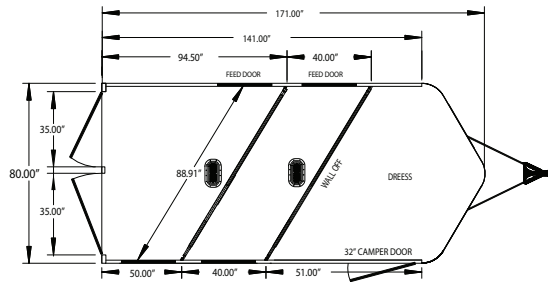


Model GS3P, 24" short wall, 3-horse floorplan shown.



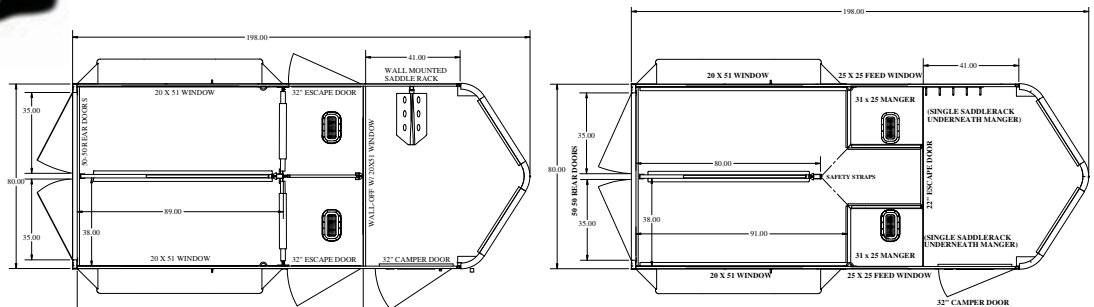
KRUISER SLANT LOAD 2 and 3-horse models available

Designed as a lightweight, exceptionally valued, high quality all-aluminum horse trailer. Equipped with drop down feed doors and saddle rack.



KRUISER STRAIGHT LOAD 2-horse models available

All-aluminum straight load trailers are equipped with optional mangers and dressing rooms. Includes camper door, saddle racks, bridle hooks, brush box, and spare tire carrier. Horse area features rubber floor mats, standard double doors or an optional rear ramp.



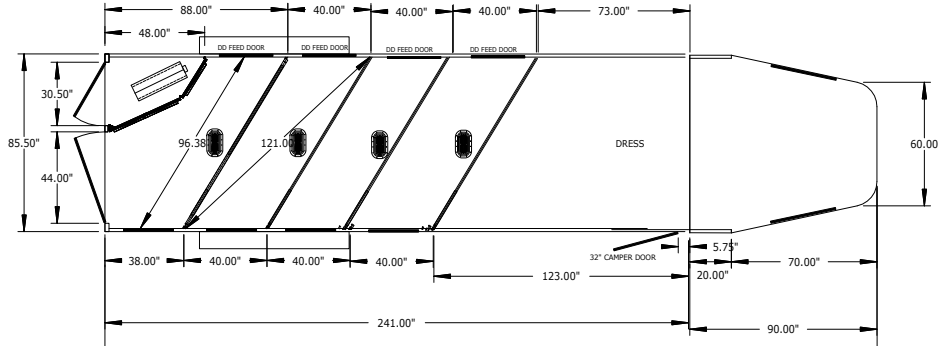
Gooseneck Trailers



Model GX420, 73" short wall, 4-horse floorplan shown.

SLANT LOAD 2,3,4,5 and 6-horse models available

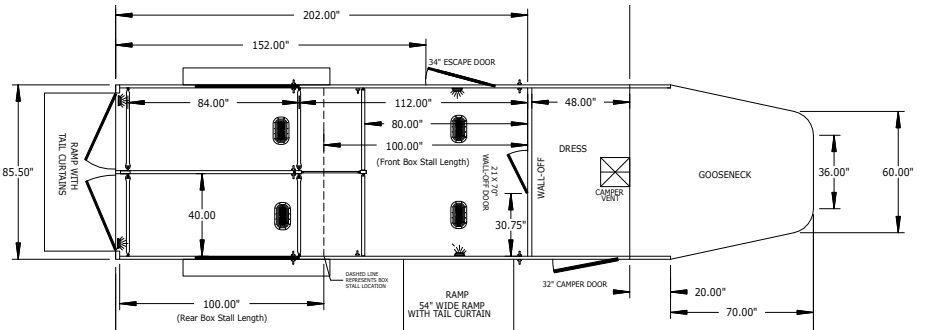
These all-aluminum trailers feature a smooth aluminum exterior, aluminum roof, and aluminum floor. Floors are I-beam cross-member reinforced, extruded plank design. Models are equipped with dressing rooms, camper door, screen door, saddle racks, bridle hooks, brush box, and a spare tire carrier.



Model GSL2+1D, 4' straight wall, 2 + 1-horse with 54" ramp, floorplan shown.

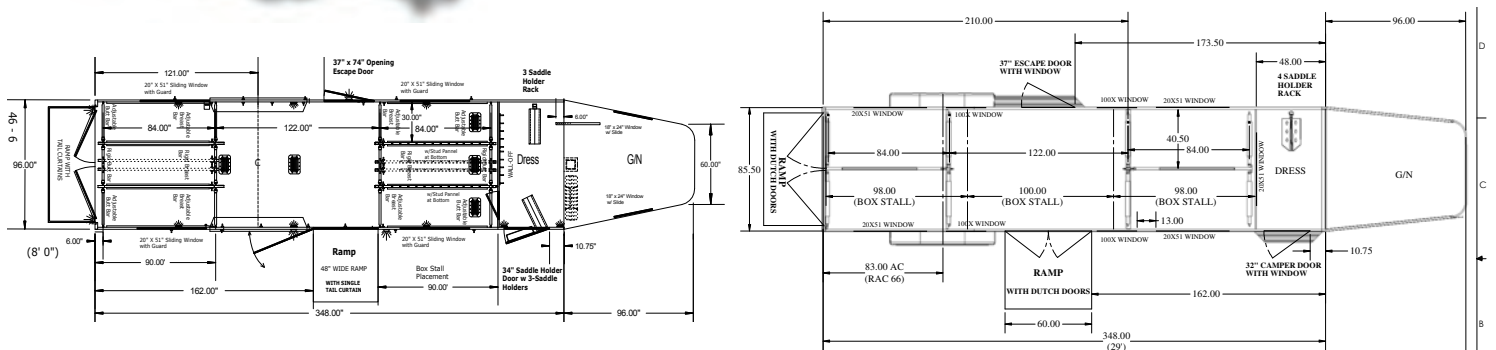
STRAIGHT LOAD 2 and 3-horse models available

These trailers feature a smooth aluminum exterior and side ramp entrance allowing access to front box stall. The horse area can be converted from 2-horse straight load to the box stall or open area. Rear ramp/side ramp loading are included in many packages. Stalls are 40" wide and 90" long from center of breast bar to center of butt bar, with 48" in front of breast bar to provide more room for large horses.



EVOLUTION STRAIGHT LOAD 4, 6 and 8-horse models available

The Kiefer Evolution trailer comes in 4, 6 or 6+2 head to head models with aluminum skin over steel frame. These models offer flexibility of box stall or straight stall loading and transport with rear ramp and tail curtains. These head-to-head models have been introduced to offer versatile platforms designed to transport 4-8 horses.



Living Quarters

3



THE KIEFER MANUFACTURING FREEDOM living quarters trailer is a novel concept in trailer design. You start with a basic trailer idea, and with the help of our dedicated professionals you design the trailer you need with all the features you want. Choose from a wide range of sizes, floor plans and configurations including slide-outs and custom interiors for your perfect blend of luxury and comfort. And, because it's made by Kiefer®, you can rest assured knowing you will be getting the build quality you deserve.

Welcome to Freedom!



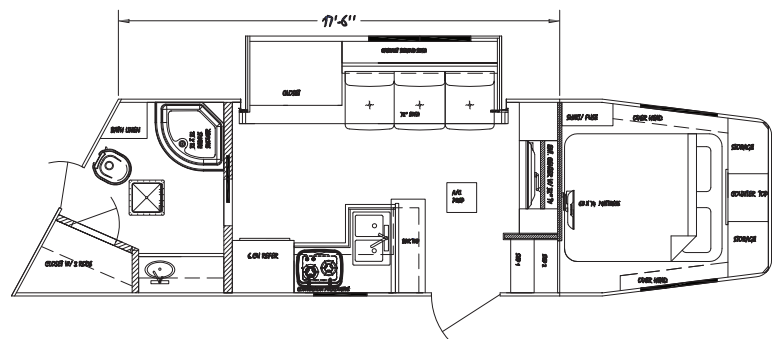
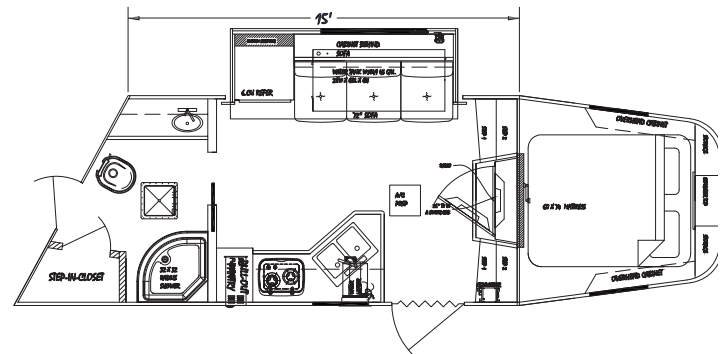
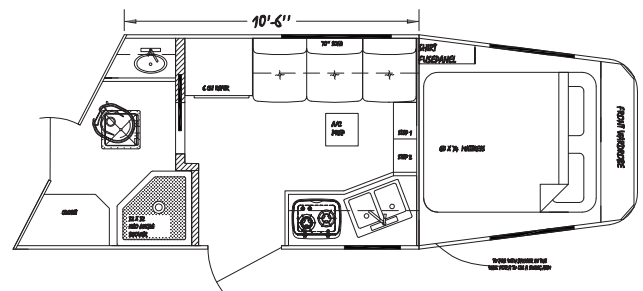


KIEFER® FREEDOM LQ

- Available in 2-7 horse models
- All-aluminum construction
- Double seal load doors
- No-leak one piece roof design
- Aluminum heavy-duty hinges and overlap latches
- 7'2" - 8' wide full-featured insulated and lined living quarters with roomier living space
- Refrigerator, microwave, stovetop, and sink
- Queen size mattress and storage cabinets in gooseneck
- Air conditioner and furnace
- Full bathroom includes shower and plenty of storage
- 8-year structural and a 3-year bumper to bumper warranty

Customize your Kiefer® trailer

Shown with optional decal package, aluminum wheels, and custom painted roof rail. You can customize the look to your personal style.



“We are committed to outstanding customer service, to continually search for opportunities to improve and innovate our products, and grow and diversify our company while operating with honesty and integrity.”

Our Mission

Combo Trailers



The combo trailer features a dressing room, and livestock area in many sizes and configurations.

These all aluminum trailers are built similar to our Industry leading Deluxe II livestock trailer, with our 4"x4" rear frame, extruded fenders and heavy-duty aluminum extruded floor. Available in both gooseneck and bumper pull models, you can have it designed to your specific hauling needs in slant or straight load configurations.



SINCE 1974 KIEFER HAS BEEN RESPECTED THROUGHOUT the industry for its features, dependability, and quality. We're proud of our products and the people who make Kiefer Manufacturing what it is. Every trailer, from our smallest recreational trailer, to the largest living quarters horse trailer, is built to the top quality standards Kiefer upholds. It's a process we are proud of when building some of the strongest, most durable trailers in the industry.

Popular Options



Kiefer® 100x feed doors



Kiefer® 100x feed doors behind horses



Aluminum wheels



Extrusion in horse area



Hydraulic landing gear



Electric saddle rack



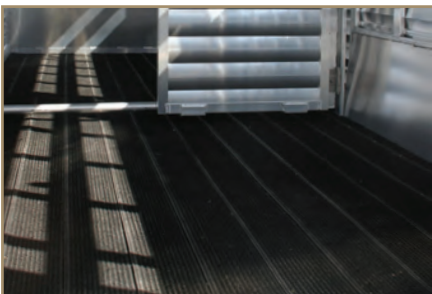
Ramp



Stainless steel front



LED strip lights



Rumbar® floor



Dual colored side sheets



Slideout



Stainless steel enhancement package



Manger



Hay rack



Some trailers are shown with options, please consult with your Kiefer dealer on standard features for each model.

Your local dealer:



Financing and leasing available. Contact your local Kiefer dealer for details.

305 East 1st Street • P.O. Box 10
Kanawha, Iowa 50447
Phone: (641) 762-3201 • (888) 254-3337

Email: sales@kiefermfg.com
www.kiefermfg.com

Specifications subject to change without notification.
Copyright © 2014 Kiefer Manufacturing