

20
PRESIDENTIAL
Fifth Wheel and Travel Trailer
06



HOLIDAY RAMBLER®

This is Living®





FROM NOW ON, THE HIGH LIFE WILL FOLLOW YOU ANYWHERE.

Welcome to the 2006 Presidential fifth wheel. As always, our flagship towable sets the standard for luxury, style and convenience. With your choice of double, triple or quad slide-outs, you'll marvel at the wide range of exciting floorplans. And you'll enjoy countless residential touches — from the beautiful cabinetry and plush furnishings down to the antique brass lighting and faucets and the conveniently placed telephone jacks. You even have the option of a cozy fireplace (not available on the 30SCD and 32SKQ). Yes, this is the ultimate fifth wheel.

PRESIDENTIAL FIFTH WHEEL

- A) For seamless styling, the refrigerator features a raised panel insert to match the cabinet doors, and optional plank flooring completes the warm, traditional look. You'll also love the Corian® solid surface countertop with a composite sink and a single-lever faucet with a handy pullout sprayer.
- B) The Presidential Fifth Wheel comes standard with a whopping king-size bed with a hardwood headboard. The storage is also roomy, thanks to a large cedar-lined wardrobe closet with beautiful mirrored doors.
- C) Other residential-style highlights include raised panel woodgrain passage doors and a glass shower enclosure. The vanity and medicine cabinet give you plenty of storage space to keep things securely in place while you're traveling.
- D) This freestanding dinette has a hidden leaf and four comfortable chairs.



A



B



C



D



DESIGNED TO SURPRISE YOU.

Think if you've seen one travel trailer you've seen them all? Then give this beauty a second thought. The 2006 Presidential travel trailer takes towable convenience to new heights of luxury. With Holiday Rambler's signature quality and styling, you'll enjoy a whole new level of RV living. No matter where your adventures lead, you'll come home to plush furnishings, beautiful woodwork and numerous residential-style details. And you'll also enjoy more ways to customize your travel trailer to fit your lifestyle — from exciting entertainment options, to optional furniture choices. Yes, you're looking at the one and only, the best in the business. The Presidential Travel Trailer.

PRESIDENTIAL TRAVEL TRAILER

- A) The spacious bedroom features a queen bed with a large wardrobe closet and either a chest of drawers or a linen closet, depending on your floorplan.
- B) Every inch of the kitchen is put to good use with numerous built-in features, including a roll-out pantry, a silverware tray, a knife holder, a trash can and a tip-out tray by the sink.
- C) Raised panel passage doors offer residential styling and privacy. In the bathroom you'll find a one-piece shower with a glass enclosure and a roomy vanity with a Corian® solid surface countertop and a composite sink.
- D) This optional built-in vacuum is a tremendous convenience and includes deluxe tools and replacement filter bags.



A



B



C

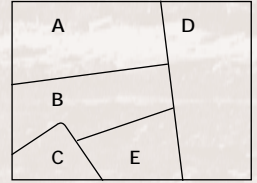


D

WHERE ALL THE DETAILS COME TOGETHER.

Holiday Rambler has long set the standard with warm, inviting interiors that feature a perfect harmony of fabrics, accents and carpeting. We've also led the way with stunning woodwork and superb craftsmanship, including raised panel cabinet doors, six-panel passage doors and low-friction roller drawer guides. Select the combination that suits you best to customize your Presidential and make it distinctively your own.

- A. BEDSPREAD
- B. SOFA
- C. CORIAN®
- D. ACCENT
- E. CARPET



ALASKAN MARBLE



BETTER STAIN PROTECTION



Manufactured in, not added on. For added protection against stains, soil repellent is applied to virtually all upholstery fabric during the finishing process for superior coverage.*

*Brand and application of upholstery fabric protection may vary depending on date recreational vehicle was manufactured.



BLACKWOOD MANOR II featuring fabrics by Liz Claiborne

PRESIDENTIAL HARDWARE



Our elegant cabinet hardware design features an antique brass finish.



RUBY PORT



SEASPRAY

EXTERIOR COLORS/WOODS/FABRICS



NEW VINTAGE OAK



NEWPORT CHERRY

IT'S 101° OUTSIDE.
DON'T LOSE YOUR COOL INSIDE.



How do you keep cool inside your RV when it's hot outside? Holiday Rambler has the answer, with our exclusive, multi-layer insulation concept. Just ask Charlie. It's his job to see how we stack up with the competition. He tested Holiday Rambler's ten-layer roof and six-layer wall construction against other RVs in a thermal chamber. The result: the temperature in the competing test unit rose approximately 30 percent more per hour on average than in the Holiday Rambler test unit.*

* Test performed by an independent testing facility, February, 1999.

Based on measurements taken every 15 minutes. For full details, visit your local dealer.



Wood



Aluminum
(Butt-Welded)



Alumaframe®
(C-Channel)



ALUMAFRAME® CONSTRUCTION SINCE 1966:

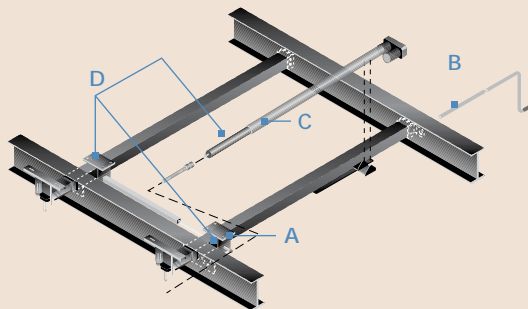
The Presidential features Holiday Rambler's exclusive Alumaframe® Superstructure. Our revolutionary system of aluminum C-Channel crossmembers runs the entire length of the unit, with double-welded intersections for added strength. This rigid design is both lighter and sturdier than wood or tubular aluminum frames — and much more reliable than butt-welded or screwed joint designs. From dirt roads to potholes, you can count on Alumaframe® to handle the relentless stresses of the road and provide superior structural integrity for many years to come.



Nev-R-Lube axles combine with electric brakes and shock absorbers to give you superior performance and reliability.

SLIDE-OUT:

When you purchase a Holiday Rambler, you can be sure the slide-out boxes are some of the strongest and most reliable you'll find anywhere. They feature our exclusive multi-layer construction to give you maximum insulation and to reduce the chance of warping, twisting or shifting. In addition, the actuator has a mechanical room lock that is built in, and there are adjustable built-in stops for in and out positions.



- A Bearing packs are bolted in 4 places, locking the gear and rack in place
- B A manual crank and extension rod comes standard with every unit, to serve as override if needed
- C Actuator motor is positioned to provide smoother movement and reduce twisting on the slide-out room
- D Alignment mechanism is separate from the linear actuator movement mechanism

6-LAYER EXTERIOR WALL: (left to right)

- Smooth .040 aluminum is standard; high-gloss gel coat fiberglass is optional
- Interlocking C-Channel filled with 1-1/2" fiberglass insulation bonded in place so it doesn't sag or leave spaces uninsulated
- Vapor barrier
- Bead foam adds comfort, saves energy and provides a thermal insulative barrier
- Vapor barrier
- Interior paneling



The 1-1/2" steel framed sub-floor is the strongest you'll find anywhere — giving you unbeatable durability.

The heated, fully enclosed underbelly provides exceptional insulation for the tanks and a smooth surface for easier towing and better gas mileage.



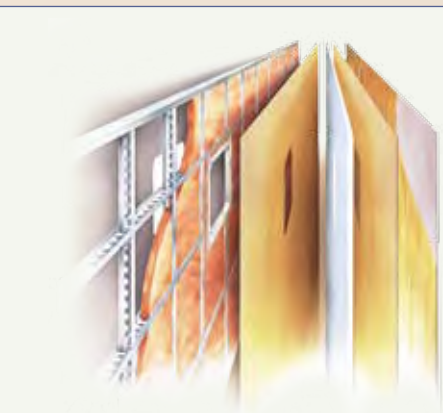
10-LAYER ROOF: (top to bottom)

- Peaked roof with BriteTek™ exterior
- Luaun backer
- Thick, tapered bead foam insulation
- Aluminum double I-beam superstructure filled with fiberglass insulation
- Vapor barrier
- Structure foam: thermal insulative barrier
- Vapor barrier
- 1/2" bead foam insulation
- Foam padding for extra insulation and interior noise reduction
- Padded vinyl ceiling



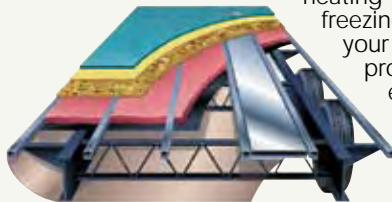
TRAILAIR® AIR RIDE SUSPENSION SYSTEM:

The optional Trailair® suspension is a revolutionary new system that lets the RV's axles work together instead of opposing each other. Included in the Trailair® suspension is a horizontal, axle-mounted air bag that absorbs road bumps, keeping them away from the RV. This air-enhanced component results in a safer, smoother and more comfortable ride, plus easier, more stable towing to protect your cargo.



6-LAYER FLOOR: "Works in Basement":

Your fifth wheel or travel trailer features a six-layer floor and fully enclosed and insulated underbelly. The smooth underbelly contains freshwater and wastewater tanks, dump valves, wiring harness and heating ducts, which help keep the fluid tanks from freezing and improve the overall insulation factor of your Presidential. The smoothness of the underbelly provides an unrestricted air flow that results in easier towing and improved gas mileage. And the outer shell of the undercarriage is made of rugged composite material that withstands damage from road debris. In addition, the frame is coated with a rust-inhibiting paint.



PRESIDENTIAL FIFTH WHEEL

BODY AND FRAME CONSTRUCTION: FEATURES		OPTIONS
<ul style="list-style-type: none"> Alumaframe® Superstructure Frame (E-Coated) Vinyl Exterior Graphics Wrap Storage Doors Smooth .040 Aluminum Exterior Walls Front and Rear Molded Fiberglass Cap 3/8" Foam Core, Thermal Barrier Laminated Sidewall Structure Flat Floor Construction Bathroom to Master Bedroom 1-1/2" Steel Framed Sub-Floor Laminated OSB Flooring Enclosed and Heated Underbelly Frame-Mounted Entry Step Aluminum Roof Structure with Double I-Beam Roof Rafter 16" on Center BriteTek™ Exterior Roof Material Triple Vapor Barrier in Roof Soft Padded Vinyl Ceiling 		<ul style="list-style-type: none"> High-Gloss Gel Coat Fiberglass Sidewalls Quick Draw Electrical Rear Leveling in Place of Standard Stabilizer Jacks Remote Landing Gear Trailair® Center Point Suspension (Tandem) (N/A: 37RLT) Trailair® Center Point Suspension (Triple) (37RLT) Slide-Out Storage Tray under Bath Deck (N/A: 32SKQ) Aluminum Wheels (4) ILO Chrome Wheels Rear-Mounted Bike Rack with 3 Bike Capacity
APPLIANCES: FEATURES		OPTIONS
<ul style="list-style-type: none"> 8 Cu. Ft. Refrigerator High-Output 3-Burner Range with Oven Bi-Fold Range Cover with Solid Surface Cover Drawer under Stove (N/A: 30SCD) Spacesaver Microwave Range Hood with 12V Exhaust Fan Home Stereo with Surround Sound and DVD Player (N/A: 30SCD) TV Swivel Base (Living Area TV Optional) Washer/Dryer Prep (N/A: 32SKQ) Linear Digital AM/FM with CD Player 12V Stereo with 6 Speakers (30SCD) 		<ul style="list-style-type: none"> 8 Cu. Ft. 2-Way Refrigerator with Ice Maker (30SCD, 34RLT, 36RLT, 37RLT) 10 Cu. Ft. 2-Way Refrigerator without Ice Maker 10 Cu. Ft. 2-Way Refrigerator with Ice Maker (30SCD, 34RLT, 36RLT, 37RLT) 12 Cu. Ft. 2-Way 4-Door Refrigerator with Ice Maker (N/A with Roll-Out Pantry Option) (N/A: 30SCD, 32SKQ, 36FKT, 36SKQ) 12 Cu. Ft. 2-Way 4-Door Refrigerator without Ice Maker (N/A with Roll-Out Pantry Option) (N/A: 30SCD, 32SKQ) Three-Burner Cooktop without Oven Convection Spacesaver Microwave (Required with CSA Units) 27" Color TV with Remote Control in Living Area (N/A: 30SCD, 32SKQ) 20" Color TV with Remote Control in Living Area (30SCD, 32SKQ) 20" Color TV with Remote Control in Bedroom VCR Exterior AM/FM Radio with CD Player Built-In Central Vacuum, Deluxe Tools, 3 Package Replacement Bags Vented Washer/Dryer, Stacked Front Load (N/A: 32SKQ) Built-In Safe

WE'VE GOT YOUR BACK.

- Live customer support 24/7/365
- 350 Nationwide Service Centers
- Free first-year enrollment in our Owner Advantage Roadside Assistance Program
- Call 1-800-634-0855 or 1-800-650-7337 to arrange a tour of one of our state-of-the-art production facilities in Indiana or Oregon.



INTERIOR: FEATURES		OPTIONS
<ul style="list-style-type: none"> • New Vintage Oak Cabinetry • Raised 6-Panel Woodgrain Passage Doors • Raised Panel Cabinet Doors with Space Ball Technology • Antique Brass Finish Cabinet Hardware • Low-Friction Roller Drawer Guides • Raised Panel Refrigerator Door Insert • Hardwood Top on Chest of Drawers • Corian® Countertop with Stain-Resistant Surface, Built-In Knife Holder and Recessed Range • Corian® Color-Matched Kitchen Sink Covers • Corian® Bathroom Countertops with Stain-Resistant Surface • Kitchen Trash Can • Toe Kicks at Base of Cabinets • Roll-Out Pantry with Cabinet next to Refrigerator with 3 Baskets (N/A: 30SCD, 32SKQ) • Pantry/Closet at Entry Door with Adjustable Shelves (N/A: 30SCD, 34RLT, 37RLT) • Workstation with Keyboard Drawer and Chair (N/A: 30SCD, 34RLT, 36FKT, 36RLT, 37RLT) • Pullout Keyboard Drawer Integrated into Entertainment Center (N/A on Those with a Desk) (N/A: 30SCD, 32SKQ, 36RLQ, 36SKQ) • Decorative Wall Clock • Overhead Cabinets in Main Floor Slide-Out above Sofa 		<ul style="list-style-type: none"> • Units with Washer/Dryer Available, Hamper in Lavatory Base (N/A: 32SKQ) • Washer/Dryer Cabinet Woodgrain Door (N/A: 32SKQ) • Cedar-Lined Bedroom Wardrobe • Bedroom TV Cabinet with Door • Magazine Rack Incorporated into Medicine Cabinet in Stool Room • Smoked Glass in Entertainment Center Door • Wainscoting and Chair Rail in Living Room Area (N/A: 36FKT, 36RLT) • Kitchen Countertop Extension (Bar Top) (N/A: 30SCD, 34RLT, 36RLQ, 36RLT, 37RLT) • Kitchen Countertop Extension (End of Countertop) (N/A: 30SCD, 34RLT, 36RLQ, 36RLT, 37RLT) • Tip-Out Tray by Sink • Padded Vinyl Ceiling • Towel Bars on Bathroom Door • Carpeting and Pad in Living Area, Hallway and Bedroom • Linoleum in Bathroom • Knife Holder • Silverware Tray • Hardwood Slide-Out House Fascia Trim and Accents • Hardwood Wardrobe Header • Decor Mirror (N/A: 36FKT, 36RLT) • Armstrong Interlocking Laminate Flooring in Galley and Entry
<ul style="list-style-type: none"> • Decor Colors: Ruby Port, Alaskan Marble, Seaspray, Blackwood Manor II • Newport Cherry Cabinets • Plank Flooring in Kitchen/Entry • Designer Accessory Package (Pillows) • Fireplace (N/A: 30SCD, 32SKQ) 		
FURNITURE: FEATURES		OPTIONS
<ul style="list-style-type: none"> • Bedroom Slide-Out with Chest of Drawers and Large Window • Freestanding Dinette Table with Hidden Leaf and 4 Chairs • King Bed • Bedspread 		<ul style="list-style-type: none"> • Queen Bed with Nightstand ILO King Bed • Ultraleather™ Glider Recliner • Hide-A-Bed Sleeper Sofa • Hide-A-Bed Sleeper Sofa with Footrests • Fabric Theater Lounge Seats IPO Chairs (N/A: 30SCD, 34RLT, 36SKQ) • Ultraleather™ Theater Lounge Seats IPO Chairs (N/A: 30SCD, 34RLT, 36SKQ)
<ul style="list-style-type: none"> • Hardwood Residential Style Headboard • Easy Bed Sleeper Sofa with Two Bolsters • Fabric Glider Recliner • Magazine Table between Recliners • Desk Chair (32SKQ, 36RLQ, 36SKQ) • Bar Stools with Spindle Legs (32SKQ, 36FKT, 36SKQ) 		
ELECTRICAL SYSTEMS AND LIGHTS: FEATURES		OPTIONS
<ul style="list-style-type: none"> • Electrical Management System (55 Amp Converter) • Utility Center by Entrance Door • Two (2) Exterior Security Lights (Individual Switches in the Utility Center) • Fluorescent Ceiling Lights • 12V Receptacle in Kitchen Location • Hitch Light • Trunk Light • Center Blinking Light • Decorative Dinette Light with Wall Switch • Antique Brass Swivel Lights in Bedroom Slide-Out Overheads and above Living Room Chairs 		<ul style="list-style-type: none"> • Cosmetic Light in Bathroom • Battery Disconnect Switch • Battery Box • Telephone Jacks at Kitchen Table, Desk Area and Entertainment Center • Wineguard® TV Antenna with Cable Box • Cable TV/DSS/VCR Ready with Video Control Box • Dual Exterior Cable/Satellite Receptacle • 12V Incandescent Ceiling Lights with Clear Lens
		<ul style="list-style-type: none"> • One 12V Deep Cycle Battery • Two 12V Deep Cycle Batteries • Solar Prep • Generator Prep • 5.5 kW Marquis Gold (LP) Onan® Generator

PRESIDENTIAL FIFTH WHEEL

PLUMBING AND LP SYSTEMS: FEATURES		OPTIONS
<ul style="list-style-type: none"> • Composite Kitchen Sink • Antique Brass Single Lever Kitchen Faucet with Pullout Sprayer • Demand Water System with SHURflo® Water Pump • Composite Bathroom Sink with Antique Brass Single Handle Faucet • Fiberglass One-Piece Shower with Glass Door • Water Heater Bypass Kit • No-Fuss Flush Holding Tank Rinsing System 		<ul style="list-style-type: none"> • 10-Gallon LP Gas/Electric Water Heater with Electronic Ignition (DSI) • Water Management System with Drain (Includes Outside Shower) • Antique Brass Shower Hose and Head • Two 30 Lb. LP Tanks with Automatic Changeover and Cover • Pump Valve for Water Fill • Poly/Plex Water Lines 25 Year/10 Year Warranty • Water Heater Switch inside Unit in the Kitchen
<ul style="list-style-type: none"> • Fiberglass One-Piece Tub with Glass Door • Water Filter System in Kitchen 		
HEATING, VENTS AND AIR CONDITIONING: FEATURES		OPTIONS
<ul style="list-style-type: none"> • 35M BTU Hydroflame Electronic Ignition Furnace (30SCD, 32SKQ) • 40M BTU Hydroflame Electronic Ignition Furnace (N/A: 30SCD, 32SKQ) • One Carrier 15M BTU High-Capacity Rooftop Air Conditioner with Remote Control • In-Floor Ducted Heating System • Ceiling Fan 		<ul style="list-style-type: none"> • Wire Prep and Ducting for Second Air Conditioner • Manual Roof Vent, Bedroom • Attic Fan with Thermo and Rain Sensor with 2-Way Switch in Living Room • Louvered Door ILO Metal Furnace Air Return Grill • 12V Roof Vent in Bathroom in Stool Area
<ul style="list-style-type: none"> • Second Carrier 13.5M BTU Rooftop Air Conditioner with Remote ILO Vent • One Carrier High-Capacity Heat Pump Rooftop Air Conditioner ILO 13.5M BTU with Remote Control • Second Carrier High-Capacity Heat Pump Air Conditioner with Remote Control • 12V Roof Vents • Attic Fan with Thermo and Rain Sensor with Two-Way Switch, Bedroom 		
WINDOWS, DOORS AND AWNINGS: FEATURES		OPTIONS
<ul style="list-style-type: none"> • Tinted Radius Windows • Window in Stool Room • Tinted Skylight in Bathroom • Patio Awning with Texturized Alumagard Cover 		<ul style="list-style-type: none"> • Swing-Out Entry Door Handle • 30" Radius Main Entrance Door with Anti-Skid Steps
<ul style="list-style-type: none"> • Slide-Out Awning or Cover Available on Specific Slide-Out Houses • Dual Pane Windows with Dark Tint • Bay Window at Dinette 		
WINDOW TREATMENTS: FEATURES		
<ul style="list-style-type: none"> • Pleated Day/Blackout Shades Color-Coordinated in Living Area and Bedroom 		<ul style="list-style-type: none"> • Living Room: Padded Valances and Lambrequins • Kitchen: Mini Blinds and Valance
<ul style="list-style-type: none"> • Bedroom: Padded Valances and Lambrequins 		
SAFETY: FEATURES		
<ul style="list-style-type: none"> • Fire Extinguisher • Deadbolt Lock(s) on Entrance Door(s) • 120V GFI Protected Outlets 		<ul style="list-style-type: none"> • Breakaway Switch • LP Gas Detector • Smoke Detector
<ul style="list-style-type: none"> • Egress Window(s) • Safety Glass (Tinted) 		

AT HOLIDAYRAMBLER.COM, WE'RE ALWAYS OPEN.

Visit our website anytime day or night to check out the latest product news and updates. You can also take a factory tour, find a dealer near you, get information on club events and much more. It's also an easy way to contact us via e-mail.

www.holidayrambler.com



PRESIDENTIAL FIFTH WHEEL

Weights*	30SCD	32SKQ	34RLT	36FKT
Gross Vehicle Weight Rating (Lbs.)	14,400	16,950	16,950	16,950
GVWR with 7,000 Lb. Axle (Lbs.)	N/A	16,950	16,950	16,950
Hitch Weight (Lbs.)	2,150	N/A	2,325	1,970
Axle(s) Weight (Lbs.)	6,000	7,000	7,000	7,000
Unloaded Vehicle Weight (Lbs.)	10,460	N/A	11,750	11,900
Net Carrying Capacity (NCC) (Lbs.)	3,940	N/A	2,650	5,050
NCC with 7,000 Lb. Axle (Lbs.)	N/A	N/A	TBD	11,900
Tire Size	16"	16"	16"	16"
Tire Size and Load Range with 7,000 Lb. Axles	N/A	G HT	G HT	G HT
Tire Load Range	E HT	N/A	N/A	N/A
Measurement				
Overall Length	32' 6"	34' 1"	36' 3"	37' 3"
Overall Height (Including A/C)	13' 2"	13' 1"	13' 1"	12' 11"
Exterior Width	98"	98"	98"	98"
Awning Length	20'	14'	16'	17'
Tank Capacities** (Gal.)				
Water Heater	10	10	10	10
Gray Tank	50/50	50/50	50/50	50/50
Black Tank	50	50	50	50
Fresh Tank	70	70	70	70
LP Tank***	30 (2)	30 (2)	30 (2)	30 (2)

Weights*	36RLQ	36RLT	36SKQ	37RLT
Gross Vehicle Weight Rating (Lbs.)	16,950	16,950	16,950	16,950
GVWR with 7,000 Lb. Axle (Lbs.)	16,950	16,950	16,950	N/A
Hitch Weight (Lbs.)	2,420	2,350	2,280	2,810
Axle(s) Weight (Lbs.)	7,000	7,000	7,000	5,200 (3)
Unloaded Vehicle Weight (Lbs.)	12,300	12,390	12,720	13,190
Net Carrying Capacity (NCC) (Lbs.)	4,650	4,560	4,230	3,790
NCC with 7,000 Lb. Axle (Lbs.)	N/A	N/A	N/A	N/A
Tire Size	16"	16"	16"	15"
Tire Size and Load Range with 7,000 Lb. Axles	G HT	G HT	G HT	N/A
Tire Load Range	N/A	N/A	N/A	D
Measurements				
Overall Length	37' 3"	37' 3"	37' 3"	38' 3"
Overall Height (Including A/C)	13' 2"	12' 11"	13' 1"	12' 10"
Exterior Width	98"	98"	98"	98"
Awning Length	17'	17'	17'	17'
Tank Capacities** (Gal.)				
Water Heater	10	10	10	10
Gray Tank	50/50	50/50	50/50	50/50
Black Tank	50	50	50	50
Fresh Tank	70	70	70	70
LP Tank***	30 (2)	30 (2)	30 (2)	30 (2)

* Weights may vary by options.

** Variances in the fabrication and installation of the tanks may cause the actual "usable capacity" to be greater or less than the capacities designated above.

*** Actual filled LP capacity is 80% of listing due to safety shut-off required on tank.

Due to the large variety of options and floorplan arrangements available to our customers, actual weights for each unit can differ significantly. Holiday Rambler provides a weight sticker on each unit we produce which includes that unit's tank capacities and approximate weight. Consult your local Holiday Rambler dealer for unit availability and further information.

The information printed in this brochure reflects product design, fabrication, and component parts at the date of printing. The manufacturer reserves the right, at any time, to make changes in product design or material or component specifications as its sole option, without notice. This includes the substitution of components of a different brand or trade name, which will result in comparable performance. All information printed in this brochure is subject to change after the date of printing. Some features shown or mentioned in this brochure are optional and may only be available in selected floorplans. Photographs may show props or decorations that are not standard equipment on Holiday Rambler models. Holiday Rambler, the HR logo and its design, are registered trademarks. All other products and company names are trademarks and/or registered trademarks of their respective holders.

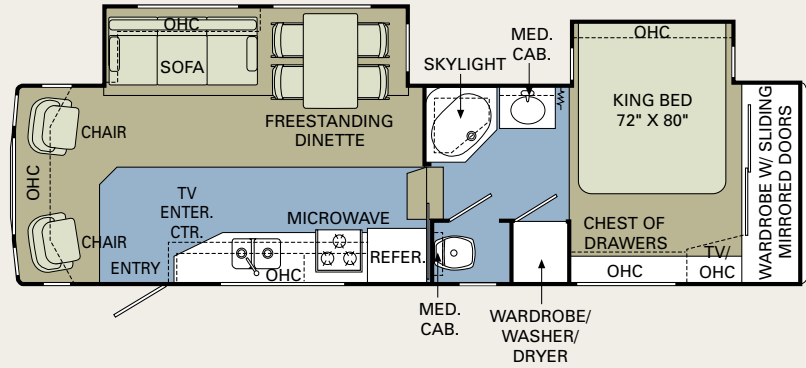
While the color of the towable's exterior and the interior fabrics depicted in this sales brochure are fair and reasonable depictions, the colors depicted may not be an exact match of the actual colors because of the variances in photo-processing and variances caused by inserting the photographs within the sales brochure. Due to product improvements, changes during the model year and/or transcription errors that may occur, information represented within this brochure may not be accurate at the time of your purchase. If certain information is significant to your purchasing decision, please confirm the information with your dealer prior to submitting your order.

The actual overall length of the recreational vehicle may differ from that indicated in the brochure due to variances in the manufacturing process and/or installed components. The actual length may be greater or less than that indicated.

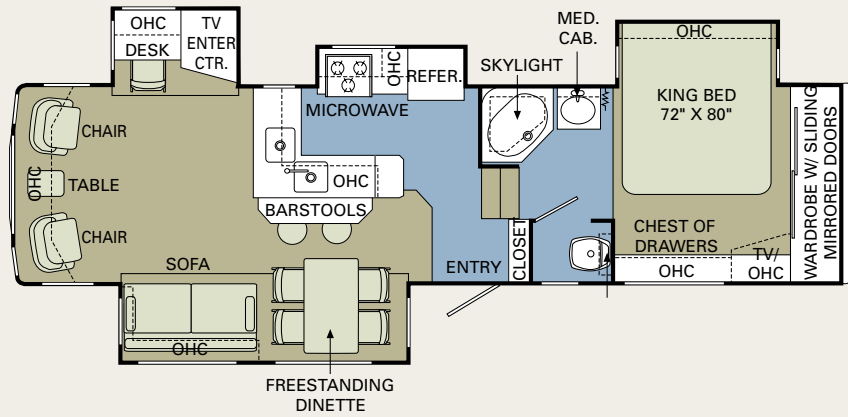
Component part and appliance manufacturers issue limited warranties covering those portions of the recreational vehicle not covered by the Limited Warranties issued by Monaco Coach Corporation. To learn which specific component parts and appliances are excluded from the Limited Warranties issued by Monaco Coach Corporation, please contact your selling dealership or Monaco Coach Corporation directly, or review the warranty packet inside the recreational vehicle.

PRESIDENTIAL FIFTH WHEEL

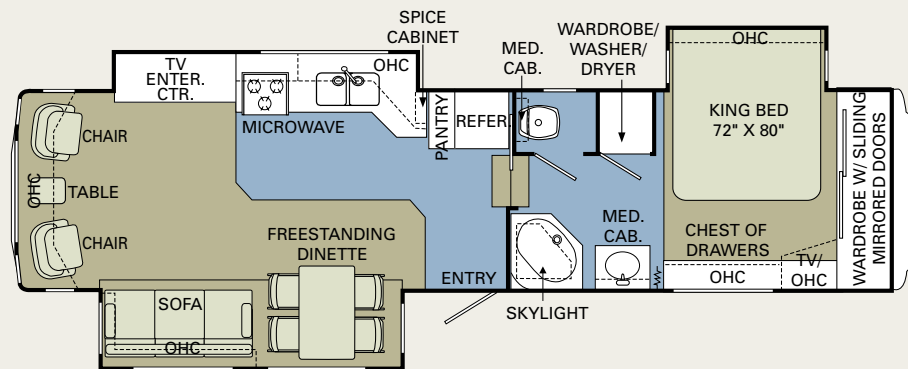
30SCD



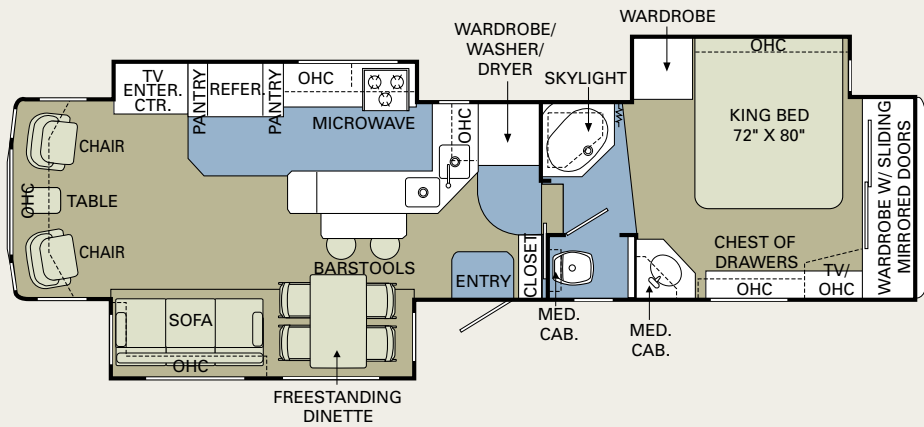
32SKQ



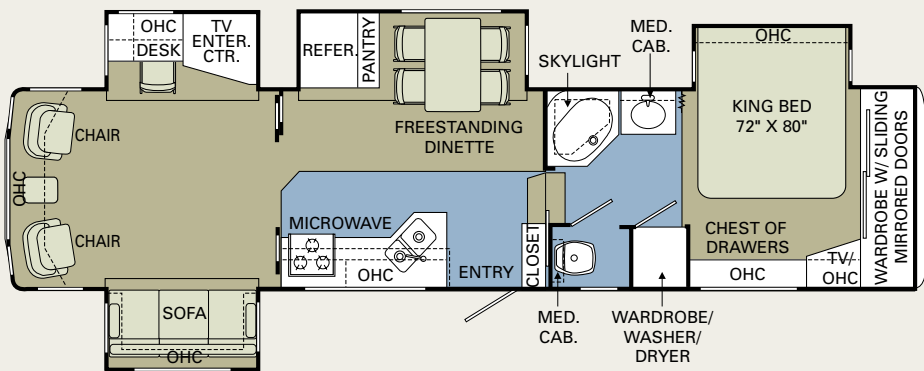
34RLT



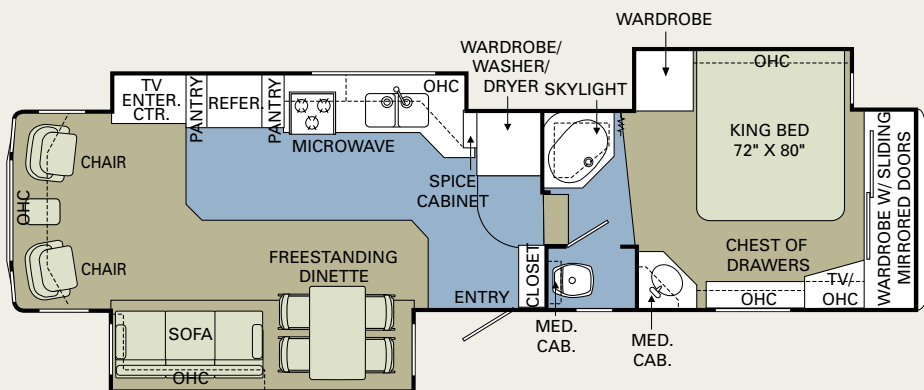
36FKT



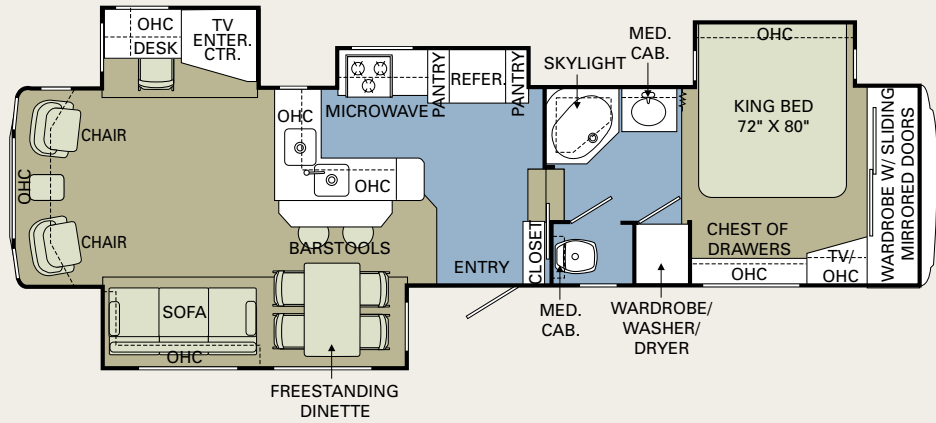
36RLQ



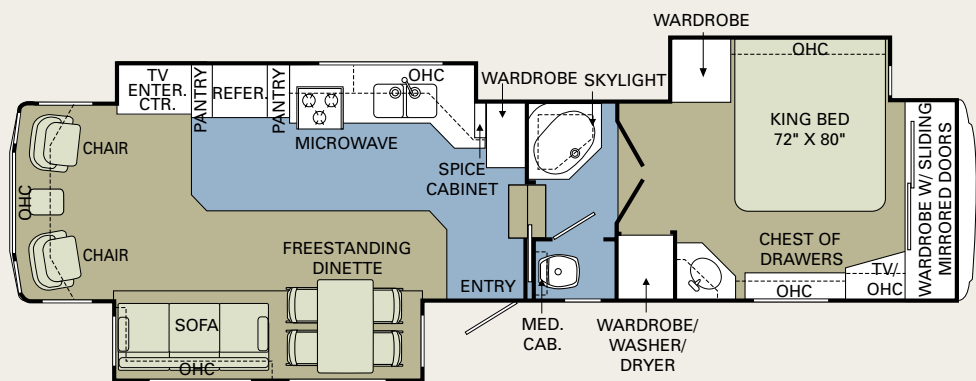
36RLT



36SKQ



37RLT



BODY AND FRAME CONSTRUCTION: FEATURES		OPTIONS
<ul style="list-style-type: none"> Alumaframe® Superstructure Frame (E-Coated) Vinyl Exterior Graphics Lighted Front Power Jack Wrap Storage Doors, Two 32" Doors Smooth .040 Aluminum Exterior Walls Front and Rear Molded Fiberglass Caps Molded Fiberglass LP Bottle Cover Molded Fiberglass Battery Box Cover 3/8" Foam Core, Thermal Barrier Laminated Sidewall Structure 1-1/2" Steel Framed Sub-Floor Laminated OSB Flooring Enclosed and Heated Underbelly Color-Coordinated Radius Wrap Frame-Mounted Entry Step 		<ul style="list-style-type: none"> Chrome Rims (4 Wheels) Aluminum Rims (4 Wheels) Rear Ladder Stabilizer Jacks Trailair® Center Point Suspension High-Gloss Gel Coat Fiberglass Sidewalls
APPLIANCES: FEATURES	OPTIONS	
<ul style="list-style-type: none"> 8 Cu. Ft. Refrigerator High-Output 3-Burner Range with Oven Bi-Fold Range Cover Systems Monitor Panel on Range Hood with 12V Fan Microwave with Touch Control Linear Digital AM/FM with CD Player 12V Stereo with 6 Speakers, Amp Included 	<ul style="list-style-type: none"> 8 Cu. Ft. 2-Way Refrigerator with Ice Maker 10 Cu. Ft. 2-Way Refrigerator without Ice Maker 10 Cu. Ft. 2-Way Refrigerator with Ice Maker 3-Burner Cooktop without Oven Convection Microwave 27" Color TV with Remote Control in Living Area (Requires TV Swivel Base) (32FKD) 20" Color TV with Remote Control in Living Area (Requires TV Swivel Base) (34SKD) 20" Color TV with Remote Control in Bedroom 	
<ul style="list-style-type: none"> TV Swivel Base VCR Home-Style Stereo with Surround Sound and DVD Player (32FKD) Exterior Radio with CD Player Built-In Vacuum with Deluxe Tools and 3 Package Replacement Filter Bags Built-In Safe Washer/Dryer Prep (34SKD) Vented Front Load Stacked Washer/Dryer (34SKD) 		
INTERIOR: FEATURES	OPTIONS	
<ul style="list-style-type: none"> New Vintage Oak Cabinetry Raised Panel Cabinet Doors Low-Friction Roller Drawer Guides Raised Panel Insert for the Refrigerator Solid Surface Kitchen Countertop with Composite Sink and Built-In Knife Holder Solid Surface Color-Matched Kitchen Sink Covers Solid Surface Bathroom Countertop with Composite Sink Kitchen Trash Can Toe Kicks at Base of Cabinets Roll-Out Pantry with Cabinet with Baskets Decorative Clock Tip-Out Tray by Sink Cedar-Lined Bedroom Wardrobe TV Shelf in Bedroom Dressing Mirror Towel Racks on Bathroom Door Smoked Glass in Entertainment Center 		<ul style="list-style-type: none"> Decors: Ruby Port, Alaskan Marble, Seaspray, Blackwood Manor II Kitchen Countertop Extension (34SKD) Wood Choice: Newport Cherry Plank Flooring in Kitchen/Entry Designer Accessory Package (Pillows)
<ul style="list-style-type: none"> Carpeting and Pad in Living Area, Hallway and Bedroom Overhead Cabinets in Main Floor Slide-Out above Sofa Padded Vinyl Ceiling Hardwood Slide-Out House Fascia Trim and Accents Armstrong Interlocking Laminate Flooring in Galley and Entry Hardwood Door Header at Bathroom Linoleum in Bathroom Hamper (34SKD) Washer/Dryer Cabinet with Double Woodgrain Doors (34SKD) Decor Mirror (34SKD) Knife Holder Silverware Tray Mini Struts in Overhead Cabinet Doors Raised Panel Passage Doors 		
FURNITURE: FEATURES	OPTIONS	
<ul style="list-style-type: none"> Queen Bed with Bedroom Slide-Out Wood Booth Dinette with Drawers and Arched Back Cushions Magazine Table between Recliners Bedspread 		<ul style="list-style-type: none"> Hide-A-Bed Sofa Hide-A-Bed Sleeper Sofa with Footrests Ultraleather™ Glider Recliner Freestanding Dinette Table with Hidden Leaf and 4 Chairs

PRESIDENTIAL TRAVEL TRAILER

ELECTRICAL SYSTEMS AND LIGHTS: FEATURES		OPTIONS
<ul style="list-style-type: none"> • Electrical Management System (30 Amp) • Porch Light • Utility Service Light • Hitch Light • Trunk Light • Center Blinking Light • Fluorescent Ceiling Lights • Decorative Dinette Light with Wall Switch • Cosmetic Light in Bathroom • Battery Disconnect Switch and Box 		<ul style="list-style-type: none"> • Decorative Wall Light with Swing Arm in Living Area • Decorative Lights in Living Room and Bedroom • Cable TV/DSS/VCR Ready with Video Control Box • TV Antenna with Cable Box • Telephone Jacks at Dinette Table, Desk Area and Entertainment Center • Dual Exterior Cable/Satellite Receptacle
<ul style="list-style-type: none"> • One 12V Deep Cycle Battery • Two 12V Deep Cycle Batteries • Two Exterior Security Lights, Individual Switches in the Utility Center • Solar Prep • 50 Amp Electrical Management Service (Required with Washer and Dryer Prep) (34SKD) 		
PLUMBING AND LP SYSTEMS: FEATURES		OPTIONS
<ul style="list-style-type: none"> • Composite Kitchen Sink • Antique Brass Single Lever Kitchen Faucet with Pullout Sprayer • Demand Water System with SHURflo® Water Pump • 6-Gallon LP Electric Water Heater with Electronic Ignition • Composite Bathroom Sink with Antique Brass Single Handle Faucet • Fiberglass One-Piece Shower with Glass Door 		<ul style="list-style-type: none"> • Antique Brass Shower Hose and Head • Water Management System with Bottom Drain, Includes Outside Shower • Water Heater Bypass Kit • No-Fuss Flush Holding Tank Rinsing System • Pump Valve for Water Fill • Two 30 Lb. LP Tanks with Automatic Changeover and Cover • Water Heater Switch inside Unit
<ul style="list-style-type: none"> • 10-Gallon LP Gas/Electric Water Heater with Electronic Ignition • Water Filter System in Kitchen • Fiberglass One-Piece Tub with Glass Door (34SKD) 		
HEATING, VENTS AND AIR CONDITIONING: FEATURES		OPTIONS
<ul style="list-style-type: none"> • 35M BTU Hydroflame Electronic Ignition Furnace • One Carrier 13.5M BTU Rooftop Air Conditioner with Remote Control • In-Floor Ducted Heating System • Manual Roof Vent 		<ul style="list-style-type: none"> • Louvered Door Furnace Air Return Grill • Insulated In-Roof Air Conditioning Duct Work • Attic Fan with Thermo and Rain Sensor with Two-Way Switch
<ul style="list-style-type: none"> • One Carrier 15M BTU High-Capacity Rooftop Air Conditioner ILO 13.5M BTU with Remote Control • Carrier 15M BTU High-Capacity Heat Pump Rooftop Air Conditioner with Remote Control ILO 13.5M with Remote Control • 12V Roof Vents 		
WINDOWS, DOORS AND AWNINGS: FEATURES		OPTIONS
<ul style="list-style-type: none"> • Tinted Radius Windows • Tinted Skylight in Bathroom • Radius Main Entrance Door with Anti-Skid Steps 		<ul style="list-style-type: none"> • Bedroom Entrance Door with Anti-Skid Steps
<ul style="list-style-type: none"> • Dual Pane Windows with Dark Tint • Bay Window at Dinette (N/A in Dual Pane) • Patio Awning with Texturized Fabric and Alumagard Cover • Slide-Out Awning on All Slide-Out Houses • Swing-Out Entry Door Handle 		
WINDOW TREATMENTS: FEATURES		OPTIONS
<ul style="list-style-type: none"> • Living Room: Mini Blinds, Padded Valances and Lambrequins • Kitchen: Mini Blinds and Valance 		<ul style="list-style-type: none"> • Pleated Day/Blackout Shades Color-Coordinated in Living Area and Bedroom
SAFETY: FEATURES		
<ul style="list-style-type: none"> • Fire Extinguisher • Deadbolt Lock(s) on Entrance Door(s) • 120V GFI Protected Outlets • Breakaway Switch • Safety Chains 		<ul style="list-style-type: none"> • Plug Guard for 12V Cord • LP Gas Detector • Smoke Detector • Egress Window(s) • Safety Glass (Tinted)

Due to the large variety of options and floorplan arrangements available to our customers, actual weights for each unit can differ significantly. Holiday Rambler provides a weight sticker on each unit we produce which includes that unit's tank capacities and approximate weight. Consult your local Holiday Rambler dealer for unit availability and further information.

The information printed in this brochure reflects product design, fabrication, and component parts at the date of printing. The manufacturer reserves the right, at any time, to make changes in product design or material or component specifications as its sole option, without notice. This includes the substitution of components of a different brand or trade name, which will result in comparable performance. All information printed in this brochure is subject to change after the date of printing. Some features shown or mentioned in this brochure are optional and may only be available in selected floorplans. Photographs may show props or decorations that are not standard equipment on Holiday Rambler models. Holiday Rambler, the HR logo and its design, are registered trademarks. All other products and company names are trademarks and/or registered trademarks of their respective holders.

While the color of the towable's exterior and the interior fabrics depicted in this sales brochure are fair and reasonable depictions, the colors depicted may not be an exact match of the actual colors because of the variances in photo-processing and variances caused by inserting the photographs within the sales brochure. Due to product improvements, changes during the model year and/or transcription errors that may occur, information represented within this brochure may not be accurate at the time of your purchase. If certain information is significant to your purchasing decision, please confirm the information with your dealer prior to submitting your order.

The actual overall length of the recreational vehicle may differ from that indicated in the brochure due to variances in the manufacturing process and/or installed components. The actual length may be greater or less than that indicated.

Component part and appliance manufacturers issue limited warranties covering those portions of the recreational vehicle not covered by the Limited Warranties issued by Monaco Coach Corporation. To learn which specific component parts and appliances are excluded from the Limited Warranties issued by Monaco Coach Corporation, please contact your selling dealership or Monaco Coach Corporation directly, or review the warranty packet inside the recreational vehicle.

Weights*	32FKD	34SKD
Gross Vehicle Weight Rating (Lbs.)	11,500	11,500
Hitch Weight (Lbs.)	1,160	1,180
Axle(s) Weight (Lbs.)	6,000	6,000
Unloaded Vehicle Weight (Lbs.)	9,250	9,290
Net Carrying Capacity (NCC) (Lbs.)	2,250	2,210
Tire Size	16"	16"
Tire Load Range	E	E

Measurements

Overall Length	33' 10"	35' 7"
Overall Height (Including A/C)	11' 3"	11' 3"
Exterior Width	98"	98"
Awning Length	21'	20'

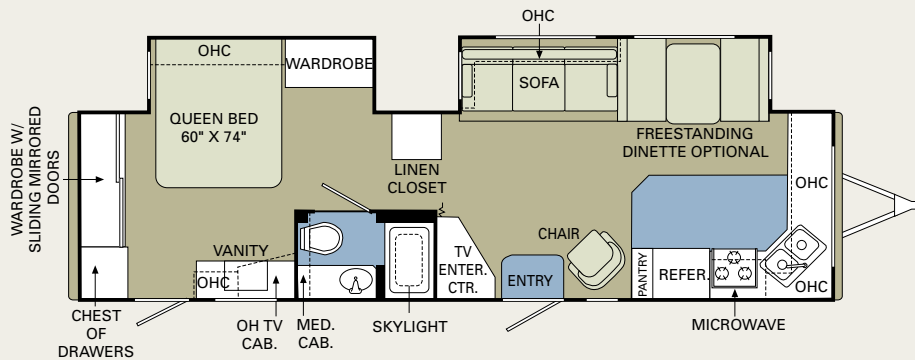
Tank Capacities (Gal.)**

Water Heater	6	6
Gray Tank	40/40	40/40
Black Tank	40	40
Fresh Tank	50	50
LP Tank***	30 (2)	30 (2)

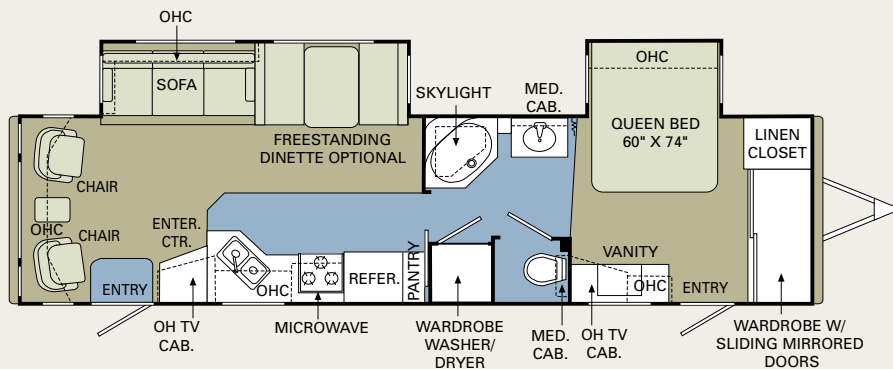
* Weights may vary by options.

** Variances in the fabrication and installation of the tanks may cause the actual "usable capacity" to be greater or less than the capacities designated above.

*** Actual filled LP capacity is 80% of listing due to safety shut-off required on tank.



32FKD



34SKD

Carpet Tile/Linoleum

20 PRESIDENTIAL Fifth Wheel and Travel Trailer 06



Thank you for taking a closer look at the 2006 Presidential fifth wheels and travel trailers. In addition to their many creature comforts, these top-of-the-line towables include countless conveniences you'll want to experience firsthand. Poke around. Kick the tires. Open and shut every door and drawer — twice. You can count on our expert sales team to answer all your questions and demonstrate why this truly is the best RV experience the road has to offer.

WARRANTIES

12 MONTH basic limited warranty

5 YEAR limited warranty on aluminum or steel frame structure of sidewall, roof, front and rear cap

Applies to certain models. See owner's manual for complete details.

ALL EYES ON THE ROAD AHEAD.

If you're considering a Holiday Rambler, chances are you share our pioneer spirit. For us, it goes back to 1953, the year we introduced our first travel trailer. Since then, our countless innovations have helped create a rich, rewarding lifestyle — and a new way for families like yours to go exploring.

Yes, we're proud of our heritage — but we're not looking back. In these pages, you'll discover that we continue to lead the entire industry. With exciting new features, roomy slide-outs, a huge selection of floorplans and, as always, more ways of keeping you and your loved ones safe.

Whether you're looking for the value of a towable, the convenience and economy of a gas motorhome or the top-of-the-line luxury of a diesel coach — Holiday Rambler has an unbeatable model for your budget. Because in 2006, one thing's for sure. We're still paving the way.



606 Nelson's Parkway Wakarusa, IN 46573

www.holidayrambler.com
(800) 245-4778




MONACO COACH CORPORATION

Monaco is traded on the New York Stock Exchange under the listing MNC.
© 2005, Monaco Coach Corporation 01/06 NPN:BROHPRE Litho in USA.

