

FORD CHASSIS

GM CHASSIS

Weights (Lbs.)	25RBS	29PBO	31PKS	31SBD	25RBS	29PBO	31PKS	31SBD
Gross Vehicle Weight Rating	14,050	14,050	14,050	14,050	14,050	14,050	14,050	14,050
Gross Combined Weight Rating*	19,050	19,050	19,050	19,050	17,600	17,600	17,600	17,600
Front Gross Axle Weight Rating	4,600	4,600	4,600	4,600	4,600	4,600	4,600	4,600
Rear Gross Axle Weight Rating	9,450	9,450	9,450	9,450	9,450	9,450	9,450	9,450

Measurements

Wheelbase	183"	192"	208"	218"	TBD	TBD	TBD	TBD
Overall Length	25' 11"	29' 11"	31' 7"	31' 11"	TBD	TBD	TBD	TBD
Overall Height	11' 2.5"	11' 2.5"	11' 2.5"	11' 2.5"	11' 2.5"	11' 2.5"	11' 2.5"	11' 2.5"
Interior Height	6' 6"	6' 6"	6' 6"	6' 6"	6' 6"	6' 6"	6' 6"	6' 6"
Interior Width	94.5"	94.5"	94.5"	94.5"	94.5"	94.5"	94.5"	94.5"
Exterior Width	100.5"	100.5"	100.5"	100.5"	100.5"	100.5"	100.5"	100.5"

Tank Capacities\*\*

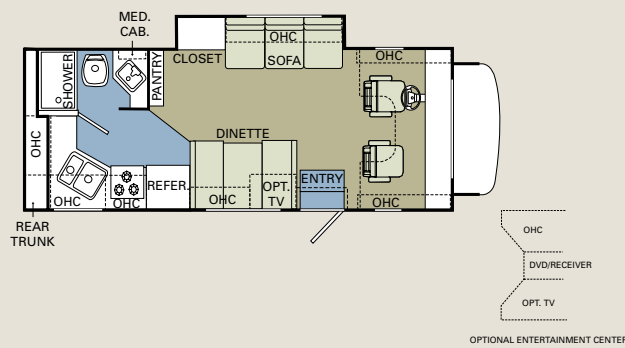
Water Heater	6	6	6	6	6	6	6	6
Gray Tank	40	40	40	40	TBD	TBD	TBD	TBD
Black Tank	40	40	40	40	TBD	TBD	TBD	TBD
Fresh Tank	35	35	35	35	TBD	TBD	TBD	TBD
LP Tank *	18	18	18	18	18	18	18	18
Fuel Tank	55	55	55	55	57	57	57	57

\*Actual filled LP capacity is 80% of listing due to safety shut-off required on tank.

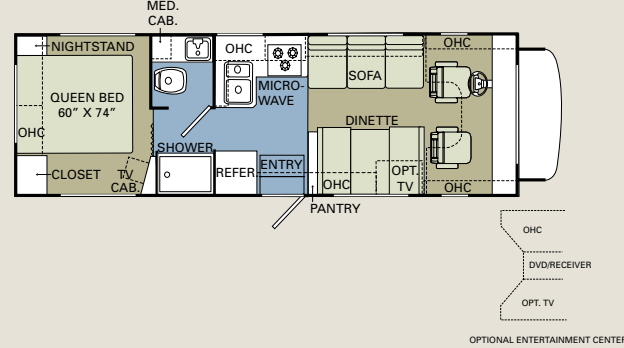
WEIGHTS/MEASUREMENTS

FLOORPLANS

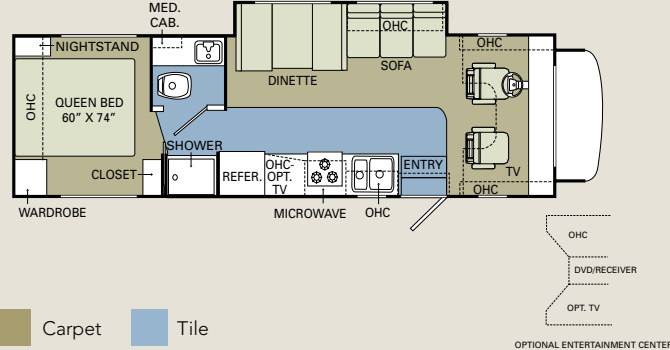
25RBS



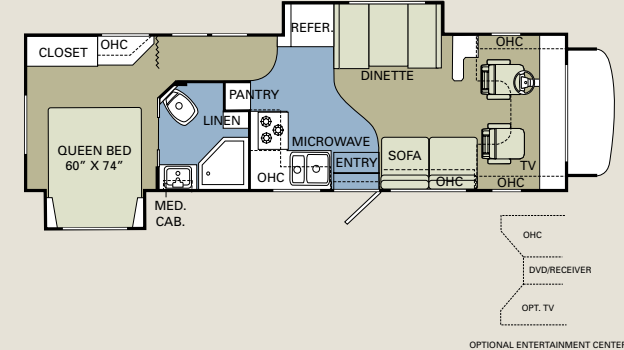
29PBO



31PKS



31SBD



Carpet Tile

OPTIONAL ENTERTAINMENT CENTER

OPTIONAL ENTERTAINMENT CENTER



HOLIDAY RAMBLER

*This is Living*

606 Nelson's Parkway Wakarusa, IN 46573

www.holidayrambler.com  
(800) 245-4778



MONACO COACH CORPORATION

Monaco is traded on the New York Stock Exchange under the listing MNC.  
© 2005, Monaco Coach Corporation 11/05 NPN:BROHATL Litho in USA.

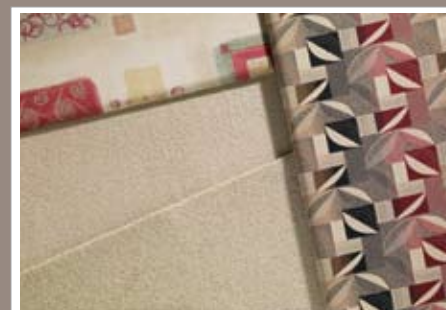


20  
ATLANTIS SE®  
06

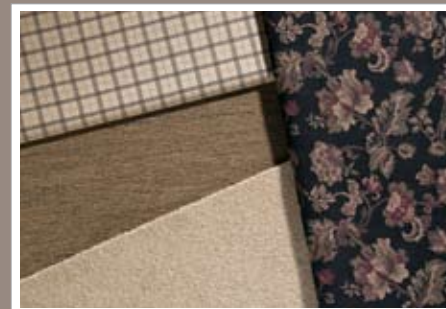


HOLIDAY RAMBLER

*This is Living*



TABASCO



BRISTOL BAY



COOL WATER



NEW VINTAGE OAK



NEWPORT CHERRY



CHAMPAGNE SELECT

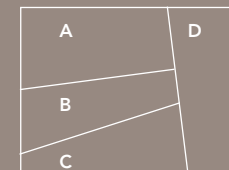


Standard



Painted Skirt Option

EXTERIOR COLORS/WOODS/FABRICS



- A. BEDSPREAD
- B. SOFA
- C. CARPET
- D. ACCENT

BODY CONSTRUCTION: FEATURES		OPTIONS
<ul style="list-style-type: none"> <li>Alumaframe® Superstructure</li> <li>Peaked One Piece Fiberglass Roof with Fiberglass Insulation</li> <li>Aluminum Exterior Walls</li> <li>Upper Front Radius Cap with Transition Application to Roof Line</li> <li>ABS Radius Rear Cap Transition Application to Roof Line and Bumper</li> <li>Steel Framed Floor Framing on Steel Trusses</li> <li>Laminated Structurwood Flooring</li> <li>Interior Paneling with 3/4" Insulation</li> </ul>	<ul style="list-style-type: none"> <li>Foam Insulated Floor Framing with 3-Ply Underbelly</li> <li>Exterior Baggage Doors with Latches. Doors located Below Floor Line</li> <li>Wheel Mud Flaps</li> <li>Vinyl Exterior Graphics</li> <li>Rear Ladder</li> <li>Interior Rubber Entry Step</li> <li>Powered Exterior Single Entry Step</li> <li>Aluminum Running Boards</li> <li>Undercoating</li> </ul>	<ul style="list-style-type: none"> <li>Sofa Slide-Out (29 PBO)</li> <li>Exterior Paint Package with FBG Running Boards and Aluminum Bumper Cover</li> </ul>
CHASSIS/ENGINE/SUSPENSION: FEATURES		OPTIONS
<b>FORD E450 CHASSIS</b> <ul style="list-style-type: none"> <li>Electronic Fuel Injection Gasoline Engine 6.8L V10</li> <li>Cubic Inch Displacement 415"/6.8L</li> <li>4-Speed Automatic Transmission with Overdrive</li> <li>Fuel Tank Capacity 55 Gallon</li> <li>130 Amp Alternator</li> <li>Rear Axle Ratio 4.56:1</li> </ul>	<b>CHEVY GMT610 CHASSIS (N/A CANADA)</b> <ul style="list-style-type: none"> <li>GM Vortec 6000 6.0L V8</li> <li>Cubic Inch Displacement 364"/6.0L</li> <li>GM Hydra-matic 4L85E Automatic 4-Speed with Overdrive &amp; Auxiliary oil cooler</li> <li>Fuel Tank Capacity 57 Gallon</li> <li>145 Amp</li> <li>Rear Axle Ratio 4.10</li> <li>Uniroyal LTX M/S LT 225/75/R16E</li> </ul>	<ul style="list-style-type: none"> <li>Stainless Steel Wheel Simulators</li> <li>Spare Tire. With Carrier, and Lug Nut Wrench</li> <li>Air Bag System</li> </ul>
<b>FORD &amp; GM CHASSIS</b> <ul style="list-style-type: none"> <li>Radial Tires</li> <li>Chrome Wheel Covers</li> <li>Rear Multi-Leaf Spring Suspension</li> <li>ABS Brake System</li> <li>5,000 lb. Hitch Receiver with Dual Connector 4-Pin or 7-Pin</li> </ul>	<ul style="list-style-type: none"> <li>Dash Heating and Air Conditioner System with Defroster</li> <li>One 12V Chassis Battery</li> <li>Auxiliary Start Circuit</li> </ul>	
COCKPIT: FEATURES		OPTIONS
<ul style="list-style-type: none"> <li>CD Player/Radio with Sirius Ready Compatibility, Weather Band, and Six Speakers</li> <li>Multi-Positioned Sun Visors</li> <li>Slim-line Center Console Below Dash</li> <li>Tan Interior Cock-pit Color</li> <li>Intermittent Windshield Wipers</li> <li>Tilt Steering Wheel</li> <li>Cruise Control</li> </ul>	<ul style="list-style-type: none"> <li>Power Steering</li> <li>Electric Automotive Horn</li> <li>Engine Cover Drink Tray</li> <li>White Exterior Mirrors</li> <li>Tan Vinyl with Fabric Insert Two Tone Pilot &amp; Co-Pilot Recliner Cock-pit Seats</li> <li>Carpeted Driver and Passenger Floor Mats</li> </ul>	<ul style="list-style-type: none"> <li>Six-Way Power Pilot Seat</li> <li>Six-Way Power Co-Pilot Seat</li> <li>CB Prep</li> <li>Instrument Panel Appliqué</li> <li>Rear Vision System</li> <li>White Power Heated Remote Exterior Mirrors</li> </ul>
APPLIANCES AND ACCESSORIES: FEATURES		OPTIONS
<ul style="list-style-type: none"> <li>Large Double Door Refrigerator</li> <li>High Output 3-Burner Range with Oven</li> <li>Microwave with Touch Control and Under Mounted Range hood</li> <li>TV Antenna</li> <li>DVD Prep</li> <li>Exterior Hook-ups for DSS Dish and Cable</li> <li>Phone Hook-up Road Side Rear of Coach</li> <li>Interior Cable TV Hook-Up</li> </ul>	<ul style="list-style-type: none"> <li>High Output 3-Burner Cook top with Cabinet Drawers Below Cook Top</li> <li>Convection Microwave with Touch Control and Under Mounted Range hood</li> <li>Video Control Box with Booster, Required with TV Options</li> <li>20" TV with Magnadyne Dash Stereo with DVD Player Option Available with Standard Cab Over Sleeping</li> </ul>	<ul style="list-style-type: none"> <li>Front Entertainment Center with 24" TV, Magnadyne Dash Stereo with DVD Player and Wrap Around Cabinets IPO Standard Cab Over Sleeping</li> <li>13" Color TV with Remote Control in Bedroom</li> <li>Satellite Dish Prep</li> <li>Exterior Entertainment Center, CD Player Radio with Two Speakers</li> </ul>
FURNITURE: FEATURES		OPTIONS
<ul style="list-style-type: none"> <li>Queen Bed (N/A: 25RBS)</li> <li>Cab Over Sleeping Area with Bunk Ladder</li> <li>Arched Back Wood Booth Dinette</li> </ul>	<ul style="list-style-type: none"> <li>Forward Facing Seat Belts at Booth Dinette (N/A: 31PKS, 31SBD)</li> <li>Jack Knife Sleeper Sofa with One Pillow</li> </ul>	<ul style="list-style-type: none"> <li>Free-Standing Dinette with Two Freestanding Chairs and Two Folding Chairs</li> </ul>
ELECTRICAL SYSTEMS AND LIGHTS: FEATURES		OPTIONS
<ul style="list-style-type: none"> <li>30 Amp 120V Distribution Panel and Cord</li> <li>55 Amp Electronic 12V Power Converter</li> <li>One 12V House Battery</li> <li>Battery Disconnect Switches</li> <li>Porch Light and Exterior Step Light on same Switch</li> <li>Exterior Power Entry Step with Light</li> </ul>	<ul style="list-style-type: none"> <li>Water Pump Switch in Service Bay Area and Hallway System Center</li> <li>Patio Receptacle</li> <li>Pilot and Co-Pilot Map Lights</li> <li>System Control Center In Hallway</li> <li>12V Incandescent Ceiling Lights Throughout with Clear Lens</li> <li>Decorative Satin Nickel Lighting Dinette and Bath Lav Wall Light with Light</li> </ul>	<ul style="list-style-type: none"> <li>Decorative Satin Nickel Wall Light above Nightstand in Bedroom (N/A: 25RBS, 31SBD)</li> <li>12V Incandescent Light above Bed on Ceiling with Wall Switch</li> <li>Single 12V Incandescent Lights Under Kitchen, Living Area, and Bedroom Overhead Cabinets</li> <li>Two 12V Incadescent Lights Under Bedroom Overhead Cabinets</li> </ul>

INTERIOR: FEATURES		OPTIONS
<ul style="list-style-type: none"> <li>New Vintage Oak Cabinetry</li> <li>Raised Panel Cabinet Doors on Overhead Cabinets, Living Area, Bath and Bedroom, Flat Panel Doors on Base Cabinets and Wardrobes</li> <li>Cabinet End Panels</li> <li>Woven Raffia Insert on all Kitchen Overhead Cabinet Doors</li> <li>Woven Raffia Inserts on Refrigerator Door</li> <li>Decorative Wall Board</li> <li>Wallpaper Border Living Area below Arched Mirror (N/A: 25RBS, 31SBD)</li> <li>Mini-Struts on all Top Hinged Overhead Storage Doors and Positive Catches on all Other Doors</li> <li>Heavy Duty Ball Bearing Drawer Guides</li> <li>Wood Cabinet Drawer Box Sides</li> <li>Wood Interior Grab Handle on Cabinet at Entry Door</li> <li>Satin Nickel Cabinetry Hardware and Bath Accessories</li> <li>Integrated Cup Holder Next to Sofa</li> <li>Laminate Kitchen Countertop with Decorative Backsplash, Wood Grain Countertop Edge Treatment, White Sink with Chrome Hi-Rise Faucet and One Sink Cover</li> <li>Kitchen Countertop Extensions (N/A: 25RBS, 31PKS)</li> </ul>	<ul style="list-style-type: none"> <li>Kitchen Countertop End Splash (29 PBO)</li> <li>All Other Countertops Laminated with Wood Grain Edge Treatment</li> <li>Kitchen Overhead Cabinets with Center Shelf</li> <li>Linoleum Flooring in Kitchen and Bath</li> <li>Carpeting with Pad in Living Area and Bedroom</li> <li>Wood Slide-out Fascia with Fabric Inserts (N/A: 29PBO)</li> <li>Octagon Beveled Edge Mirror in Living Area with Wallpaper Border Below (N/A: 25RBS, 31SBD)</li> <li>Bathroom Door Accent Trim on Hallway Side</li> <li>Medicine Cabinet with Shelves</li> <li>Bathroom Lav Base Mirror</li> <li>Towel Bar in Bathroom</li> <li>Towel Ring in Bath Area</li> <li>Mirrored Wardrobe Doors (31SBD)</li> <li>Bedspread with One Decorative Pillow (N/A: 25RBS)</li> <li>Fabric Headboard (N/A with Rear Window Option) (N/A: 25RBS, 31SBD)</li> <li>Black-Out Day/Night Pleated Shades in Living Area and Bedroom</li> <li>Soil Repellant on Fabric, Teflon Fabric Protection</li> </ul>	<ul style="list-style-type: none"> <li>Décor's: Tabasco, Bristol Bay, Cool Water</li> <li>Wood Choice: Newport Cherry, Champagne Select</li> <li>Raised Panel Refrigerator Insert Panels IPO Wood Grain Panel Inserts</li> </ul>
PLUMBING AND LP SYSTEMS: FEATURES		OPTIONS
<ul style="list-style-type: none"> <li>Kitchen Sink with Chrome Hi-Rise Faucet</li> <li>Bath Lav Faucet Double Handle</li> <li>Demand Water System and Water Pump</li> <li>6 Gallon LP Gas Water Heater with Electronic Ignition</li> <li>Water Heater By-Pass Valve</li> </ul>	<ul style="list-style-type: none"> <li>Toilet</li> <li>Gravity and Pressurized Water Fill</li> <li>Shower/Step Tub</li> <li>Folding Shower Door</li> </ul>	<ul style="list-style-type: none"> <li>Separate Chrome Faucet for Filtered Water</li> <li>Satin Nickel Framed Shower Door with Obscure Glass</li> <li>Outside Shower inside Storage Bay with Hot/Cold Water</li> </ul>
HEATING, VENTS, AND AIR CONDITIONING: FEATURES		OPTIONS
<ul style="list-style-type: none"> <li>One 15M BTU Air Conditioner with Ducted Air and Analog Wall Thermostat, Living Area or Kitchen Location depending on Floorplan Layout</li> <li>31M BTU Electronic Ignition Furnace</li> <li>Above Floor Ducted Heating System</li> <li>Non-Powered Roof Vent, Living Area or Kitchen Location Depending on Floorplan Layout</li> </ul>	<ul style="list-style-type: none"> <li>Non-Powered Roof Vent, Bedroom</li> <li>12V Roof Vent in Bath</li> <li>Metal Air Return Grill Furnace Satin Nickel Finish</li> </ul>	<ul style="list-style-type: none"> <li>One 15M BTU Air Conditioner with Heat Pump and Ducted Air and Analog Wall Thermostat, Living Area or Kitchen Location Depending on Floorplan Layout</li> <li>12V Attic Fan above Cab Over Sleeping Area</li> <li>12V Attic Fan Living Area or Kitchen Location Depending on Floor Plan Layout</li> <li>12V Attic Fan Bedroom</li> <li>Heated Drainage System</li> </ul>
WINDOWS, DOORS, AND AWNINGS: FEATURES		OPTIONS
<ul style="list-style-type: none"> <li>Tinted Single Pane Windows</li> <li>Radius Entrance Door with Obscure Glass, Screen Door and Anti-Skid Steps</li> <li>Exterior Entry Assist Handle</li> </ul>	<ul style="list-style-type: none"> <li>Slide-Out Awnings Living Area and Bedroom</li> <li>Protecta Glaze Tinted Plexiglass Skylight in Bathroom</li> </ul>	<ul style="list-style-type: none"> <li>Rear Window, Deletes Headboard (N/A: 25RBS)</li> <li>Vinyl Patio Awning with White Arms</li> </ul>
SAFETY: FEATURES		OPTIONS
<ul style="list-style-type: none"> <li>Fire Extinguisher</li> <li>Deadbolt Lock on Entrance Door</li> <li>6" 120V GFI Protected Circuit</li> </ul>	<ul style="list-style-type: none"> <li>LP Gas Detector</li> <li>Smoke Detector</li> <li>Carbon Monoxide Detector</li> </ul>	<ul style="list-style-type: none"> <li>Pilot and Co-Pilot Three-Point Seat Belts</li> <li>Egress Window's</li> </ul>

Due to the large variety of options and floorplan arrangements available to our customers, actual weights for each unit can differ significantly. Holiday Rambler provides a weight sticker on each unit we produce which includes that unit's tank capacities and approximate weight. Consult your local Holiday Rambler dealer for unit availability and further information.

The information printed in this brochure reflects product design, fabrication, and component parts at the date of printing. The manufacturer reserves the right, at any time, to make changes in product design or material or component specifications as its sole option, without notice. This includes the substitution of components of a different brand or trade name, which will result in comparable performance. All information printed in this brochure is subject to change after the date of printing. Some features shown or mentioned in this brochure are optional and may only be available in selected floorplans. Photographs may show props or decorations that are not standard equipment on Holiday Rambler models. Holiday Rambler, the HR logo and its design, are registered trademarks. All other products and company names are trademarks and/or registered trademarks of their respective holders.

While the color of the mini-motorhome's exterior and the interior fabrics depicted in this sales brochure are fair and reasonable depictions, the colors depicted may not be an exact match of the actual colors because of the variances in photo-processing and variances caused by inserting the photographs within the sales brochure. Due to product improvements, changes during the model year and/or transcription errors that may occur, information represented within this brochure may not be accurate at the time of your purchase. If certain information is significant to your purchasing decision, please confirm the information with your dealer prior to submitting your order.

The actual overall length of the recreational vehicle may differ from that indicated in the brochure due to variances in the manufacturing process and/or installed components. The actual length may be greater or less than that indicated.

Component part and appliance manufacturers issue limited warranties covering those portions of the recreational vehicle not covered by the Limited Warranties issued by Monaco Coach Corporation. To learn which specific component parts and appliances are excluded from the Limited Warranties issued by Monaco Coach Corporation, please contact your selling dealership or Monaco Coach Corporation directly, or review the warranty packet inside the recreational vehicle.