

**20**  
**ALUMASCAPE®**  
FIFTH WHEEL  
**06**



HOLIDAY RAMBLER®

*This is Living®*





## IN 53 YEARS, WE'VE LEARNED A THING OR TWO.

---

When it comes to value-packed fifth wheels, you won't find a better choice than the 2006 Alumascape. That's because in 53 years, we've learned more about the things that matter most to you. Our exclusive Alumaframe® construction gives you unbeatable strength and reliability. Our exciting double, triple and quad slide floorplans give you a better selection. Our flat-floor slide-outs and residential-style passage doors give you greater convenience and livability. And our legendary quality, styling, craftsmanship and owner support — they all come standard. This is no first-generation RV. This is decades of valuable experience. And it's all waiting for you. The 2006 Alumascape.

## OUR RECIPE FOR A BETTER EXPERIENCE.

At Holiday Rambler, we stand behind one simple belief: The more we put into our products, the more you'll get out of them. That's why you'll find more distinctive details in the Alumascape than in any fifth wheel in its class. From the beauty of the woodwork, to the plush durability of the furnishings, to the gracious styling of the decors, you'll discover that superior ingredients add up to a superior RV — and that's a better way to see the country.



- A) The spacious bedroom is highlighted by a queen bed with a headboard in a slide-out with windows on both sides. A chest of drawers and a large wardrobe closet provide plenty of storage space.
- B) The residential-style details extend to the bathroom, where you'll find a one-piece fiberglass shower with a glass enclosure, a large medicine cabinet and a vanity with roomy under-sink storage. If you prefer a bathtub, one is available as an option.

## KEEPING PACE WITH YOUR CONTEMPORARY LIFESTYLE.

The Alumascape has everything you need for a home-away-from-home, an office-away-from-the-office, or simply playtime away from everything. The kitchen is efficiently organized with plenty of elbow room for preparing meals and more storage space for keeping things tidy. You'll enjoy top-notch appliances, including a microwave and a high-output three-burner range with an oven. And a systems monitor panel is conveniently located on the range hood.



A) Select floorplans feature this slide-out with an entertainment center and a computer workstation with a keyboard drawer. Depending on your floorplan, you'll have the option of a 27" or 20" TV, and an exciting home theater system with surround sound is also optional.

B) While a booth dinette comes standard, you may choose this optional freestanding table with a hidden leaf and four stylish chairs.

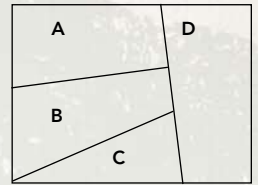




## WHERE ALL THE DETAILS COME TOGETHER.

Holiday Rambler has long set the standard with warm, inviting interiors that feature a perfect harmony of fabrics, accents and carpeting. We've also led the way with stunning woodwork and superb craftsmanship, including raised panel cabinet doors with "space ball" technology and decorative slide-out fascia. Select the combination that suits you best to customize your Alumascap and make it distinctively your own.

- A. BEDSPREAD
- B. SOFA
- C. CARPET
- D. ACCENT



EXTERIOR COLORS/WOODS/FABRICS



ISLAND MULBERRY



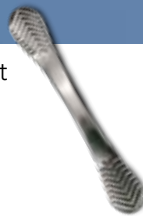
GALLERIA II



NEW VINTAGE OAK

### ALUMASCAPE HARDWARE

Our elegant cabinet hardware design features a brushed nickel finish.



**BETTER  
STAIN  
PROTECTION**

Manufactured in, not added on. For added protection against stains, soil repellent is applied to virtually all upholstery fabric during the finishing process for superior coverage.\*

\*Brand and application of upholstery fabric protection may vary depending on date recreational vehicle was manufactured.



MEADOWBANK

Weights*	29RKT	30RKD	31SKD	31SKT	32SKD
Gross Vehicle Weight Rating (Lbs.)	14,400	14,400	14,400	14,400	14,400
Gross Vehicle Weight Rating with 7,000 Lb. Axles (Lbs.)	N/A	N/A	N/A	N/A	N/A
Hitch Weight (Lbs.)	2,350	2,430	1,770	1,790	2,380
Axle(s) Weight (Lbs.)	6,000	6,000	6,000	6,000	6,000
Unloaded Vehicle Weight (Lbs.)	10,355	10,460	9,860	10,460	10,060
Net Carrying Capacity (NCC) (Lbs.)	4,045	3,940	4,540	3,940	4,340
Net Carrying Capacity with 7,000 Lb. Axles (Lbs.)	N/A	N/A	N/A	N/A	N/A
Tire Size	16"	16"	16"	16"	16"
Tire Size and Load Range with 7,000 Lb. Axles	N/A	N/A	N/A	N/A	N/A
Tire Load Range	E	E	E	E	E

#### Measurements

Overall Length	31' 6"	32' 6"	33' 10"	33' 3"	33' 10"
Overall Height (Including A/C)	12' 8"	12' 7"	12' 8"	12' 8"	12' 8"
Exterior Width	98"	98"	98"	98"	98"
Awning Length	16'	17'	20'	15'	18'

#### Tank Capacity\*\*

Water Heater (Gal.)	6	6	6	6	6
Gray Tank (Gal.)	40/40	40/40	40/40	40/40	40/40
Black Tank (Gal.)	40	40	40	40	40
Fresh Tank (Gal.)	50	50	50	50	50
LP Tank (Gal.)***	30 (2)	30 (2)	30 (2)	30 (2)	30 (2)

Weights*	34RLT	35REQ	35FLO	35RLO	35SKT
Gross Vehicle Weight Rating (Lbs.)	14,400	N/A	N/A	N/A	14,400
Gross Vehicle Weight Rating with 7,000 Lb. Axles (Lbs.)	N/A	16,950	16,950	16,950	N/A
Hitch Weight (Lbs.)	2,288	2,200	2,660	2,230	TBA
Axle(s) Weight (Lbs.)	6,000	7,000	7,000	7,000	6,000
Unloaded Vehicle Weight (Lbs.)	10,940	11,940	11,330	11,730	TBA
Net Carrying Capacity (NCC) (Lbs.)	3,460	N/A	N/A	N/A	TBA
Net Carrying Capacity with 7,000 Lb. Axles (Lbs.)	N/A	5,010	5,620	5,220	N/A
Tire Size	16"	16"	16"	16"	16"
Tire Size and Load Range with 7,000 Lb. Axles	16" G HT	16" G HT	16" G HT	16" G HT	16" G HT
Tire Load Range	E HT	TBA	TBA	TBA	E HT

#### Measurements

Overall Length	35' 10"	36' 10"	36' 10"	36' 10"	36' 10"
Overall Height (Including A/C)	12' 10"	12' 9"	12' 10"	12' 8"	12' 9"
Exterior Width	98"	98"	98"	98"	98"
Awning Length	16'	20'	20'	17'	17'

#### Tank Capacity\*\*

Water Heater (Gal.)	6	6	6	6	6
Gray Tank (Gal.)	40/40	40/40	40/40	40/40	40/40
Black Tank (Gal.)	40	40	40	40	40
Fresh Tank (Gal.)	50	50	50	50	50
LP Tank (Gal.)***	30 (2)	30 (2)	30 (2)	30 (2)	30 (2)

\* Weights may vary by options.

\*\* Variances in the fabrication and installation of the tanks may cause the actual "usable capacity" to be greater or less than the capacities designated above.

\*\*\* Actual filled LP capacity is 80% of listing due to safety shut-off required on tank.

Due to the large variety of options and floorplan arrangements available to our customers, actual weights for each unit can differ significantly. Holiday Rambler provides a weight sticker on each unit we produce which includes that unit's tank capacities and approximate weight. Consult your local Holiday Rambler dealer for unit availability and further information.

The information printed in this brochure reflects product design, fabrication, and component parts at the date of printing. The manufacturer reserves the right, at any time, to make changes in product design or material or component specifications as its sole option, without notice. This includes the substitution of components of a different brand or trade name, which will result in comparable performance. All information printed in this brochure is subject to change after the date of printing. Some features shown or mentioned in this brochure are optional and may only be available in selected floorplans. Photographs may show props or decorations that are not standard equipment on Holiday Rambler models. Holiday Rambler, the HR logo and its design, are registered trademarks. All other products and company names are trademarks and/or registered trademarks of their respective holders.

While the color of the towable's exterior and the interior fabrics depicted in this sales brochure are fair and reasonable depictions, the colors depicted may not be an exact match of the actual colors because of the variances in photo-processing and variances caused by inserting the photographs within the sales brochure. Due to product improvements, changes during the model year and/or transcription errors that may occur, information represented within this brochure may not be accurate at the time of your purchase. If certain information is significant to your purchasing decision, please confirm the information with your dealer prior to submitting your order.

The actual overall length of the recreational vehicle may differ from that indicated in the brochure due to variances in the manufacturing process and/or installed components. The actual length may be greater or less than that indicated.

Component part and appliance manufacturers issue limited warranties covering those portions of the recreational vehicle not covered by the Limited Warranties issued by Monaco Coach Corporation. To learn which specific component parts and appliances are excluded from the Limited Warranties issued by Monaco Coach Corporation, please contact your selling dealership or Monaco Coach Corporation directly, or review the warranty packet inside the recreational vehicle.



**ALUMAFRAME® CONSTRUCTION SINCE 1966:**

The Alumascape features Holiday Rambler's exclusive Alumaframe® Superstructure. Our revolutionary system of aluminum H and C-Channel crossmembers runs the entire length of the unit, with double-welded intersections for added strength. This rigid design is both lighter and sturdier than wood or tubular aluminum frames — and much more reliable than butt-welded or screwed joint designs. From dirt roads to potholes, you can count on Alumaframe® to handle the relentless stresses of the road and provide superior structural integrity for many years to come.



Alumaframe®



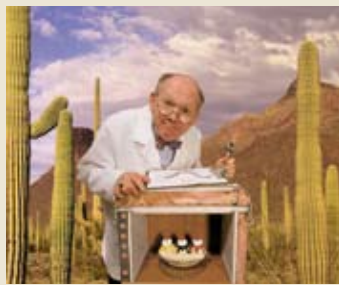
Wood



Aluminum  
(Butt-Welded)



Alumaframe®  
(C-Channel)



**It's 101° outside.  
Don't lose your  
cool inside.**

How do you keep cool inside your RV when it's hot outside? Holiday Rambler has the answer, with our exclusive, multi-layer insulation concept. Just ask Charlie. It's his job to see how we stack up with the competition. He tested Holiday Rambler's nine-layer roof and six-layer wall construction against other RVs in a thermal chamber. The result: the temperature in the competing test unit rose approximately 30 percent more per hour on average than in the Holiday Rambler test unit.\*

\* Test performed by an independent testing facility, February, 1999. Based on measurements taken every 15 minutes.



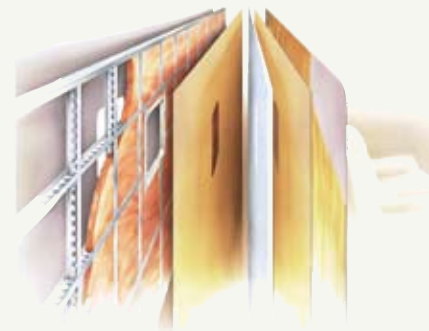
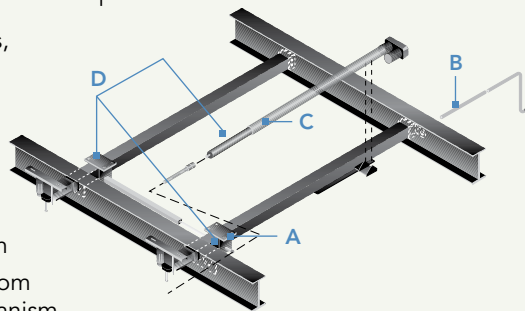
6,000 lb. tandem axles with electric brakes  
(29RKT, 30RKD, 31SKD, 31SKT, 32SKD, 34RLT, 35SKT)

7,000 lb. tandem axles with electric brakes  
(35REQ, 35FLQ, 35RLQ)

**SLIDE-OUT:**

When you purchase a Holiday Rambler, you can be sure the slide-out boxes are some of the strongest and most reliable you'll find anywhere. They feature our exclusive multi-layer construction to give you maximum insulation and to reduce the chance of warping, twisting or shifting. In addition, the linear actuator has a mechanical room lock that is built in, and there are adjustable built-in stops for in and out positions.

- A Bearing packs are bolted in 4 places, locking the gear and rack in place
- B A manual crank and extension rod comes standard with every unit, to serve as override if needed
- C Actuator motor is positioned to provide smoother movement and reduce twisting on the slide-out room
- D Alignment mechanism is separate from the linear actuator movement mechanism





Aluminum roof structure with double I-beam roof rafter 16" on center



1-1/2" steel-framed sub floor



There's plenty of room to bring along all your gear in the exterior storage spaces.



**9-LAYER ROOF:** (top to bottom)

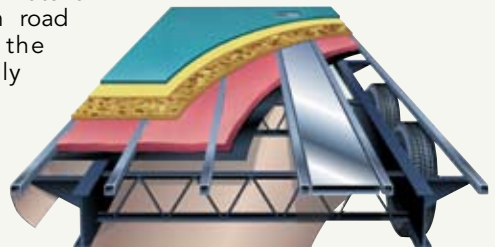
- Peaked roof with BriteTek™ roof material
- Luaun backer
- Thick, tapered bead foam insulation
- Aluminum double I-beam superstructure filled with fiberglass insulation
- Vapor barrier
- Structure foam: thermal insulative barrier
- Vapor barrier
- Luaun backer
- Vinyl ceiling

**6-LAYER EXTERIOR WALL:** (left to right)

- Smooth .040 aluminum is standard; high-gloss gel coat fiberglass is optional
- Interlocking C-Channel filled with 1-1/2" fiberglass insulation bonded in place so it doesn't sag or leave spaces uninsulated
- Vapor barrier
- Bead foam adds comfort, saves energy and provides a thermal insulative barrier
- Vapor barrier
- Interior paneling

**6-LAYER FLOOR: "WORKS IN THE BASEMENT"**

The underside of your fifth wheel features a 6-layer floor and a fully enclosed, heated and protective underbelly. The underbelly encloses the wiring harness and fresh water tanks. It helps protect the fluids from freezing and improves the overall insulation of the coach. The underbelly's outer shell is made of rugged composite material that withstands damage from road debris. By smoothing out the undercarriage, the underbelly provides an unrestricted air flow that results in easier towing and improved gas mileage. In addition, the frame is coated with a rust-inhibiting, electro deposit ion coating.



BODY CONSTRUCTION: FEATURES		OPTIONS
<ul style="list-style-type: none"> <li>Alumaframe® Superstructure</li> <li>E-Coated Frame</li> <li>Vinyl Exterior Graphics</li> <li>Smooth .040 Aluminum Exterior Walls</li> <li>Front and Rear Molded Fiberglass Caps</li> <li>Main Slide-Out House, 6' 1" Head Room</li> <li>3/8" Foam Core, Thermal Barrier, Laminated Sidewall Structure</li> <li>Rear Bay Cap with Three Windows (N/A: 29RKT, 30RKD, 35REQ, 35FLQ)</li> <li>Color-Coordinated Painted Skirts</li> <li>Molded ABS Fender Skirts</li> <li>1-1/2" Steel Framed Sub-Floor</li> <li>Laminated 5/8" Sturdi-Wood Flooring</li> <li>Laminated Bath Deck (N/A: 35FLQ)</li> <li>Aluminum Roof Structure with Double I-Beam Roof Rafter 16" on Center</li> <li>Brite Tek™ Exterior Roof Material</li> <li>Vapor Barrier in Roof</li> <li>Hard Board Vinyl Ceiling</li> <li>Flat Floor Slide-Out in Main Living Area</li> </ul>	<ul style="list-style-type: none"> <li>Enclosed and Heated Underbelly</li> <li>Oversized Exterior Storage Door with Below-Floor Storage (N/A: 35FLQ)</li> <li>Frame-Mounted Entry Step</li> <li>Power Landing Jacks</li> <li>6,000 Lb. Nev-R-Lube Tandem Axles with Electric Brakes</li> <li>7,000 Lb. Nev-R-Lube Tandem Axles with Electric Brakes (35FLQ, 35REQ, 35RLQ)</li> <li>Radial Tires</li> <li>Chrome Stylized 16" Wheels with Center Hub</li> <li>Ladder</li> <li>Stabilizer Jacks (N/A with Quick Draw Leveling)</li> <li>Shock Absorbers</li> <li>Spare Tire with Sport Wheel</li> <li>Chrome Rims (4 Wheels)</li> </ul>	<ul style="list-style-type: none"> <li>7,000 Lb. Nev-R-Lube Axles with Chrome Wheels (4 Total) (34RLT, 35SKT)</li> <li>Bike Rack</li> <li>Quick Draw Electrical Leveling Rear (N/A with Stabilizer Jacks)</li> <li>Aluminum Rims — 4 Wheels</li> <li>Wrap Storage Doors (N/A: 35REQ, 35RLQ)</li> <li>High-Gloss Gel Coat Fiberglass Sidewalls</li> </ul>
APPLIANCES: FEATURES	OPTIONS	
<ul style="list-style-type: none"> <li>8 Cu. Ft. Refrigerator</li> <li>Microwave with Touch Control</li> <li>High-Output 3-Burner Range with Oven</li> <li>Systems Monitor Panel on Range Hood (12 Volt Fan) (N/A: 29RKT, 34RLT)</li> <li>Bi-Fold Range Cover</li> <li>Digital 12V Linear AM/FM Radio with CD Player Stereo with 4 Speakers</li> <li>Telephone Jacks at Kitchen Table, Desk Area and Entertainment Center</li> </ul>	<ul style="list-style-type: none"> <li>10 Cu. Ft. 2-Way Refrigerator</li> <li>Three-Burner Cooktop without Oven</li> <li>Roll-Out Pantry with Cabinet with Baskets (N/A: 29RKT)</li> <li>Convection Microwave</li> <li>27" Color TV with Remote — Living Area, TV Swivel Base Required (N/A: 29RKT, 31SKT)</li> <li>20" Color TV with Remote — Living Area, TV Swivel Base Required (29RKT, 31SKT)</li> </ul>	<ul style="list-style-type: none"> <li>13" Color TV with Remote Control in Bedroom</li> <li>TV Swivel Base — Required Option for 20" and 27" TV</li> <li>Home Theater Surround Sound System</li> <li>Fireplace (N/A: 29RKT, 31SKT)</li> <li>Exterior Radio with CD Player</li> <li>Washer/Dryer Prep with 50 Amp Service — Requires 10 Gal. Water Heater (N/A: 31SKT)</li> <li>Vented Washer/Dryer Stacked (N/A: 31SKT)</li> </ul>
INTERIOR: FEATURES	OPTIONS	
<ul style="list-style-type: none"> <li>New Vintage Oak Cabinets</li> <li>Raised Panel Cabinet Doors</li> <li>Raised Panel Refrigerator Door</li> <li>Decorative Slide-Out Room Fascia with Trim and Accents</li> <li>Laminate Countertop with Corian® Accent Edge in Galley and Lavatory</li> <li>Galley and Lavatory Backsplash</li> <li>Toe Kicks</li> <li>Kitchen Sink Cover</li> <li>Raised 6-Panel Woodgrain Passage Doors</li> <li>Workstation with Keyboard Drawer</li> <li>TV Shelf in Bedroom</li> <li>Carpeting and Pad in Living Area, Hallway and Bedroom</li> <li>Utility Center by Entrance Door — Slide-Out Switches, Key Hooks and Security Light Switches</li> </ul>	<ul style="list-style-type: none"> <li>Linoleum in Kitchen, Bath and Entry</li> <li>Decor Mirrors — Smoked Glass on Entertainment Center Door Only (N/A: 35REQ)</li> <li>Overhead Cabinets in Main Floor Slide-Out above Sofa (N/A: 35FLQ)</li> <li>Pantry/Closet at Front Entry Door with Adjustable Shelves (N/A: 29RKT, 31SKD, 31SKT, 34RLT)</li> <li>Magazine Rack in Stool Room Incorporated into Medicine Cabinet</li> <li>Wood Grain Double Doors in Washer/Dryer Cabinet</li> <li>Hamper in Lavatory Base (N/A: 31SKT)</li> <li>Wood Interior Grab Handle</li> </ul>	<ul style="list-style-type: none"> <li>Decor Colors: Island Mulberry, Galleria II, Meadowbank</li> <li>Kitchen Countertop Extension at End of Countertop (29RKT, 31SKT, 32SKD, 35REQ, 35RLQ)</li> <li>Leaded Glass in Living Area Overheads (N/A: 35FLQ)</li> <li>Plank Flooring in Kitchen/Entry</li> <li>Designer Accessory Package</li> </ul>

FURNITURE: FEATURES	OPTIONS
<ul style="list-style-type: none"> <li>• Bedroom Slide-Out with Chest of Drawers</li> <li>• Wardrobe Slide-Out (35FLQ)</li> <li>• Wood Booth Dinette with End Door and Arched Back Cushions</li> <li>• Bedspread</li> <li>• Headboard</li> <li>• Magazine Table between Chairs (N/A: 29RKT, 30RKD, 35REQ)</li> <li>• Swivel Barrel Chair(s)</li> <li>• Hide-A-Bed Sofa (N/A: 35FLQ)</li> <li>• Jackknife Sofa Slide-Out — Roadside (35FLQ)</li> <li>• Bar Stools (31SKD, 35FLQ)</li> </ul>	<ul style="list-style-type: none"> <li>• King Bed (35REQ)</li> <li>• Curbside Slide-Out with Jackknife Sofa in Living Room (35FLQ)</li> <li>• Hide-A-Bed Sofa with Footrests (N/A: 35FLQ)</li> <li>• Fabric Swivel Rocker Recliner(s)</li> <li>• Ultra Vinyl Swivel Rocker Recliner Chair(s)</li> <li>• High-Back Desk Chair (31SKT, 35RLQ, 35SKT)</li> <li>• Freestanding Dinette Table with Hidden Leaf and 4 Chairs (Half-Back Style Chairs)</li> </ul>
ELECTRICAL SYSTEMS AND LIGHTS: FEATURES	OPTIONS
<ul style="list-style-type: none"> <li>• Decorative Wall Light with Swing Arm in Living Area</li> <li>• Interior Switch for Water Heater</li> <li>• Electrical Management System — 30 Amp</li> <li>• Porch Light</li> <li>• Hitch Light</li> <li>• Two (2) Exterior Security Lights — Individual Lighted Switches in the Utility Center</li> <li>• Exterior Side Wall Turn Signal</li> <li>• Disconnect and Battery Box</li> <li>• Trunk Light</li> <li>• Bath Bar Light</li> <li>• Cable TV/DSS/VCR Ready with Video Box</li> <li>• 12V Receptacle Located in Kitchen</li> <li>• TV Antenna with Cable Box</li> <li>• Dual Exterior Cable/Satellite Receptacle</li> </ul>	<ul style="list-style-type: none"> <li>• One 12V Deep Cycle Battery with Disconnect</li> <li>• Two 12V Deep Cycle Batteries with Disconnect</li> <li>• Solar Prep</li> <li>• Fluorescent Lighting in Living Room and Kitchen</li> <li>• 50 Amp Electrical Management Service</li> <li>• Generator Prep</li> <li>• 5.5 kW Marquis Gold (LP) Onan® Generator</li> </ul>
PLUMBING AND LP SYSTEMS: FEATURES	OPTIONS
<ul style="list-style-type: none"> <li>• White Fiberglass Kitchen Sink with Chrome High-Profile Single Handle Faucet</li> <li>• Demand Water System with SHURflo® Water Pump</li> <li>• 10-Gallon LP Gas/Electric Water Heater</li> <li>• Fiberglass One-Piece Shower with Glass Door</li> <li>• Water Management System — Includes Outside Shower</li> <li>• Water Heater Bypass Kit</li> <li>• No-Fuss Flush Holding and Tank Rinsing System</li> <li>• Two 30 Lb. LP Tanks with Automatic Changeover</li> <li>• Sewer Hose Storage with Hatch and Tube</li> </ul>	<ul style="list-style-type: none"> <li>• Water Filter System in Kitchen</li> <li>• Fiberglass One-Piece Tub with Glass Door</li> </ul>
HEATING, VENTS AND AIR CONDITIONING: FEATURES	OPTIONS
<ul style="list-style-type: none"> <li>• 35M BTU Hydroflame Electronic Ignition Furnace (29RKT, 30RKD, 31SKD, 31SKT, 32SKD)</li> <li>• 40M BTU Hydroflame Electronic Ignition Furnace (34RLT, 35REQ, 35FLQ, 35RLQ, 35SKT)</li> <li>• In-Floor Ducted Heating System</li> <li>• Ceiling Fan</li> <li>• Manual Roof Vent</li> <li>• 12V Roof Vent in Bathroom</li> <li>• One Carrier 13.5M BTU Rooftop Air Conditioner with Remote Control</li> <li>• Wire Prep and Ducting for Second Air Conditioner with Optional 50 Amp Service</li> </ul>	<ul style="list-style-type: none"> <li>• One Carrier High-Capacity Rooftop Air Conditioner with Remote Control</li> <li>• One Carrier High-Capacity Heat Pump Rooftop Air Conditioner with Remote Control</li> <li>• Second Carrier 13.5M BTU Rooftop Air Conditioner with Remote (Requires 50 Amp Service Option)</li> <li>• Second Carrier High-Capacity Heat Pump Air Conditioner with Remote</li> <li>• Attic Fan with Thermo and Rain Sensor with 2-Way Switch — Except Bath 1-Way Switch</li> </ul>

## WINDOWS, DOORS AND AWNINGS: FEATURES

- Dark Tinted Radius Windows
- Tinted Skylight in Bathroom
- Color-Coordinated Texturized Fabric Awning
- 30" Radius Main Entrance Door with Anti-Skid Steps
- Swing-Out Entry Door Handle
- Window in Stool Room (N/A: 31SKD)

## OPTIONS

- Dual Pane Windows with Dark Tint
- Bay Window at Dinette
- Slide-Out Awning or Cover Available on Specific Slide-Out Houses

## WINDOW TREATMENTS: FEATURES

- Living Room: Mini Blinds, Padded Valances and Lambrequins
- Kitchen: Mini Blinds and Valance
- Bathroom: Mini Blinds and Valance
- Rear Bay Window with Residential Style Vertical Blinds (N/A: 29RKT, 30RKD, 35REQ, 35FLO)
- Bedroom: Mini Blinds, Valances and Decorative Drapery Panels
- Pleated Day/Blackout Shades in Living Area and Bedroom

## SAFETY: FEATURES

- Fire Extinguisher
- Deadbolt Lock(s) on Entrance Door(s)
- 120V GFI Protected Outlets (Kitchen, Bath, Exterior)
- Breakaway Switch
- LP Gas Detector
- Smoke Detector
- Egress Window(s)
- Safety Glass

## AT HOLIDAYRAMBLER.COM, WE'RE ALWAYS OPEN.

Visit our website anytime day or night to check out the latest product news and updates. You can also take a factory tour, find a dealer near you, get information on club events and much more. It's also an easy way to contact us via e-mail.

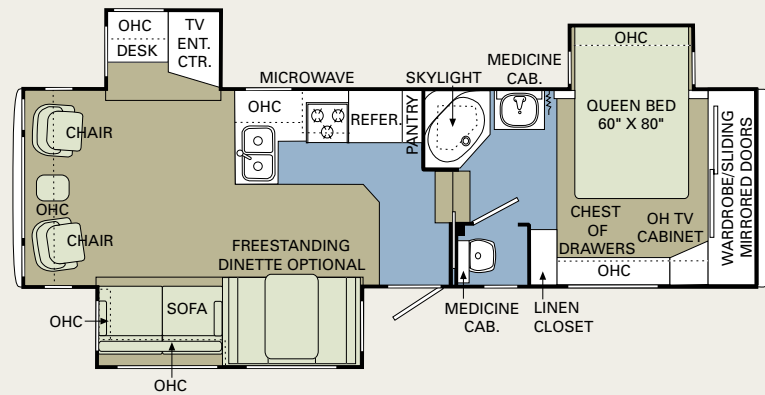
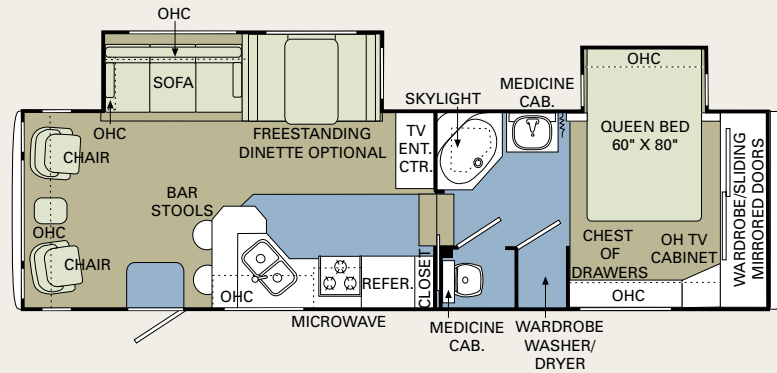
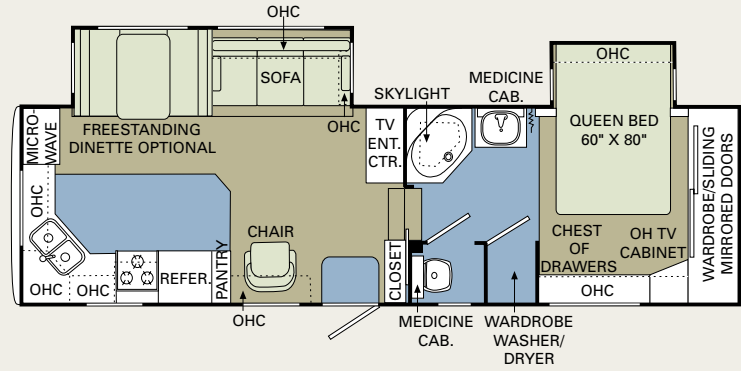
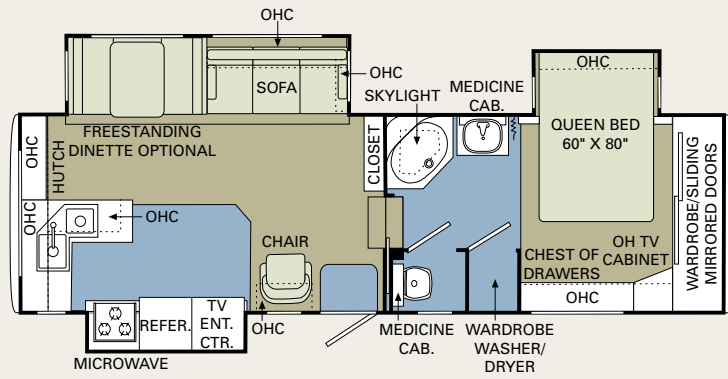
[www.holidayrambler.com](http://www.holidayrambler.com)



## WE'VE GOT YOUR BACK.

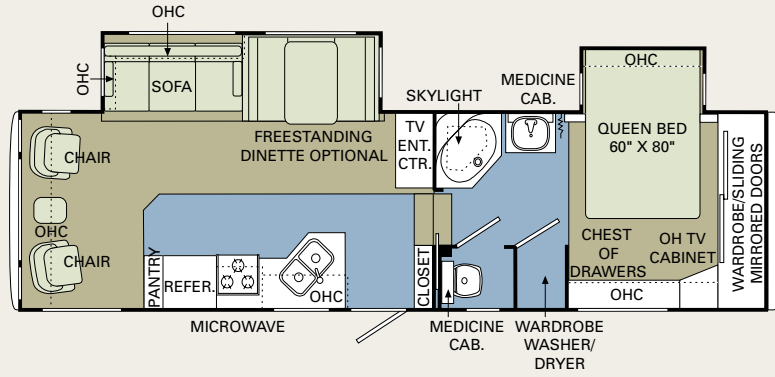


- Live customer support 24/7/365
- 350 Nationwide Service Centers
- Free first-year enrollment in our Owner Advantage Roadside Assistance Program
- Call 1-800-634-0855 or 1-800-650-7337 to arrange a tour of one of our state-of-the-art production facilities in Indiana or Oregon.

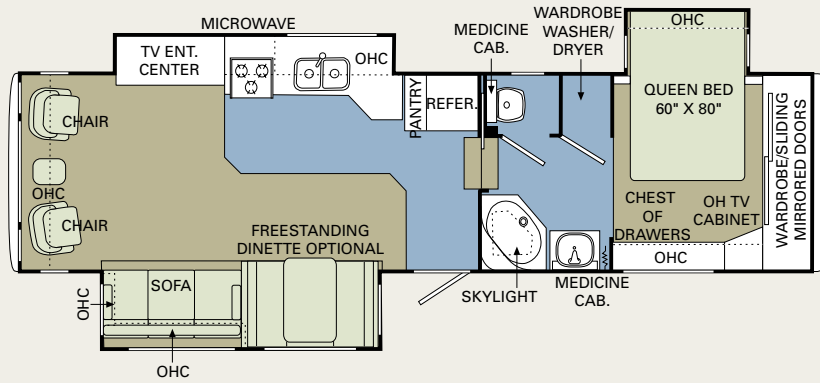


■ CARPET   ■ LINOLEUM

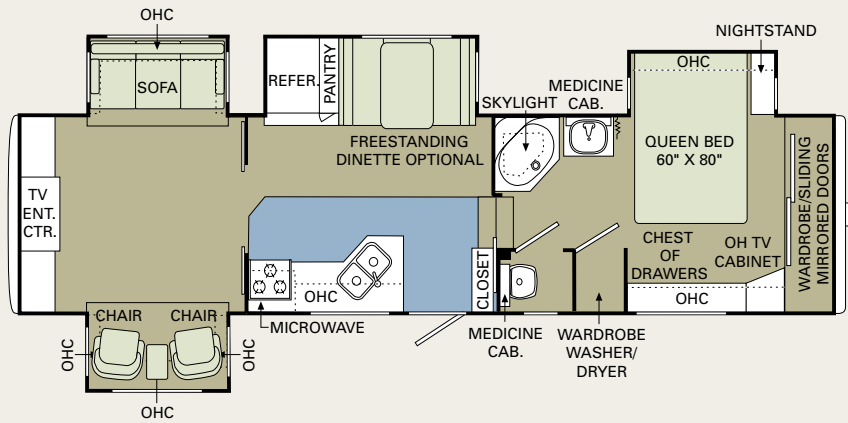
32SKD



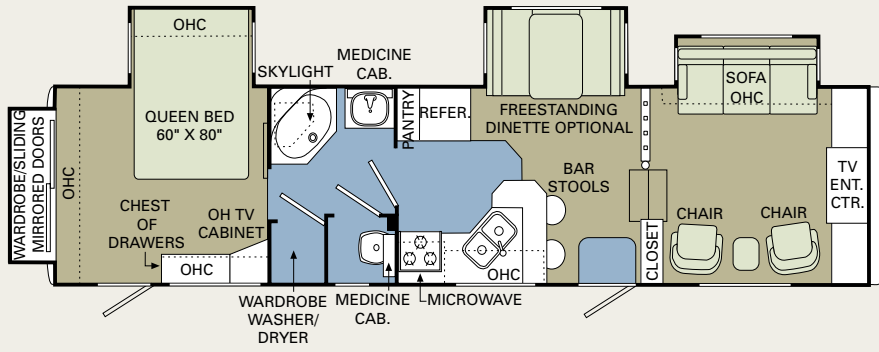
34RLT



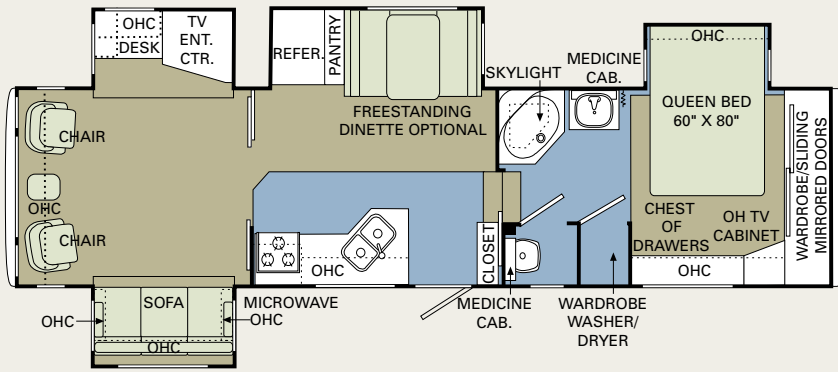
35REQ



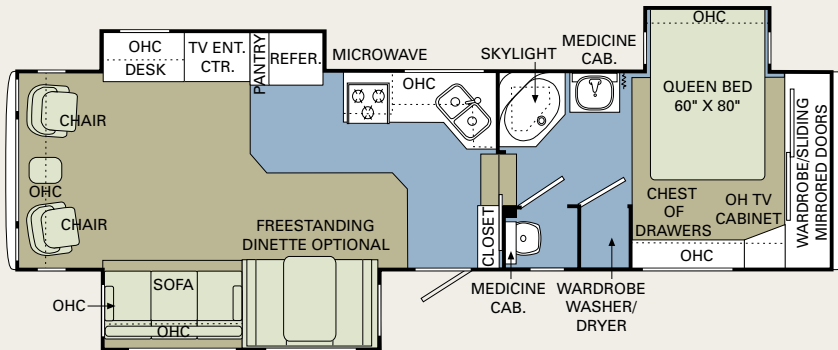
35 FLO



35 RLQ



35 SKT



CARPET LINOLEUM

# 20 ALUMASCAPE® FIFTH WHEEL 06

Thank you for taking a closer look at the 2006 Alumascape. In addition to its many creature comforts, this value-packed towable includes countless conveniences you'll want to experience firsthand. Poke around. Kick the tires. Open and shut every door and drawer — twice. You can count on our expert sales team to answer all your questions and demonstrate why this truly is the best RV experience the road has to offer.

## WARRANTIES

**12 MONTH** basic limited warranty

**5 YEAR** limited warranty on aluminum or steel frame structure of sidewall, roof, front and rear cap

Applies to certain models. See owner's manual for complete details.

## ALL EYES ON THE ROAD AHEAD.

If you're considering a Holiday Rambler, chances are you share our pioneer spirit. For us, it goes back to 1953, the year we introduced our first travel trailer. Since then, our countless innovations have helped create a rich, rewarding lifestyle — and a new way for families like yours to go exploring.

Yes, we're proud of our heritage — but we're not looking back. In these pages, you'll discover that we continue to lead the entire industry. With exciting new features, roomy slide-outs, a huge selection of floorplans and, as always, more ways of keeping you and your loved ones safe.

Whether you're looking for the value of a towable, the convenience and economy of a gas motorhome or the top-of-the-line luxury of a diesel coach — Holiday Rambler has an unbeatable model for your budget. Because in 2006, one thing's for sure. We're still paving the way.



**HOLIDAY RAMBLER®**

*This is Living®*

606 Nelson's Parkway Wakarusa, IN 46573

[www.holidayrambler.com](http://www.holidayrambler.com)  
(800) 245-4778

  
MONACO COACH CORPORATION

Monaco is traded on the New York Stock Exchange under the listing MNC.  
© 2005, Monaco Coach Corporation 8/05 NPN:BROHALUM Litho in USA.

