

NEPTUNE®
2009



HOLIDAY RAMBLER®

This is Living®



Neptune



NEW LOOK. NEW ATTITUDE.

Meet the 2009 Neptune. This popular motorhome has taken a big step up — with a bold new front cap and four-color graphics and the power of a Cummins® ISB 340 horsepower engine. The Neptune's interior kicks it up a notch, too, with new decorative wood slide-out fascia and newly styled sofas, whether you choose plush fabric or optional Leatherette. In the cockpit, you'll enjoy the comfort of recliner seats with a new footrest option on the co-pilot's seat. And behind the wheel, you'll find a wide range of safety-minded features, from the large unobstructed view of the Panaview 1-piece windshield, to the rear vision system, to optional GPS navigation.









YOUR LIFE. YOUR STYLE.

The Neptune's living space is all about you. Choose the appliances that fit your life with impressive options, including a four-door refrigerator, a combination washer/dryer and the ultimate convenience — a central vacuum system. The kitchen features the sophisticated styling of raised panel cabinet doors and solid surface countertops — plus, you'll enjoy plenty of roomy pantry storage. A queen bed rules the bedroom, with an optional Select Comfort bed. The bedroom also features a new 19" widescreen LCD TV and an optional DVD player. Oil rubbed bronze fixtures in the bathroom provide an added touch of elegance.



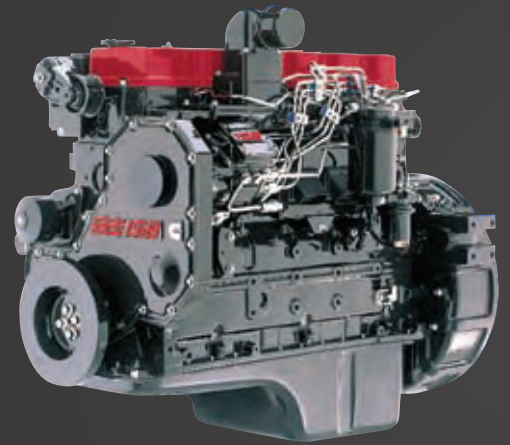


THE ROADMASTER DIFFERENCE

Turn the key of the 2009 Neptune and prepare to experience the best-in-class performance of the Roadmaster chassis. Roadmaster is the only chassis manufacturer with a 100 percent commitment to only producing chassis for luxury motorhomes. In fact, every Roadmaster chassis is custom built for the exact model and floorplan. That means you'll enjoy a smoother ride, superior front-to-rear balance and unbeatable strength and reliability. We encourage you to take a few minutes to learn more about the many features that put Roadmaster in a class by itself.

PRIDE OF OWNERSHIP.

The 2009 Neptune says you've arrived, wherever your destination may be. From the high-quality awnings, to the new enlarged entry door, to the deeper 30" bed slide-outs, every detail reflects our commitment to quality — and to a better motorhome experience. As you can see below, our pass-through storage compartments and side-hinged baggage doors eliminate the hassles of retrieving items from the storage bays.

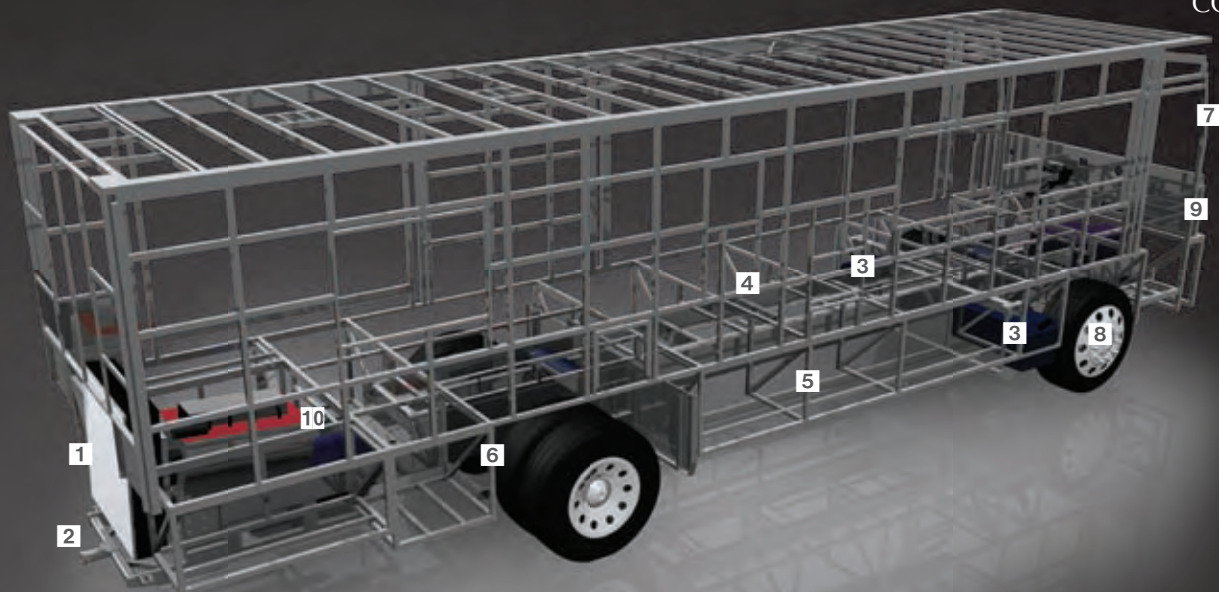


CUMMINS® ISB 340 HP ENGINE



9-LAYER ROOF CONSTRUCTION (top to bottom)

- One-piece peaked fiberglass roof
- Luaun backing
- Thick, tapered bead foam insulation
- Aluminum double I-beam superstructure filled with fiberglass insulation
- Vapor barrier
- Structure foam: thermal insulative barrier
- 1/2" bead foam insulation
- Foam padding for extra insulation
- Padded vinyl ceiling



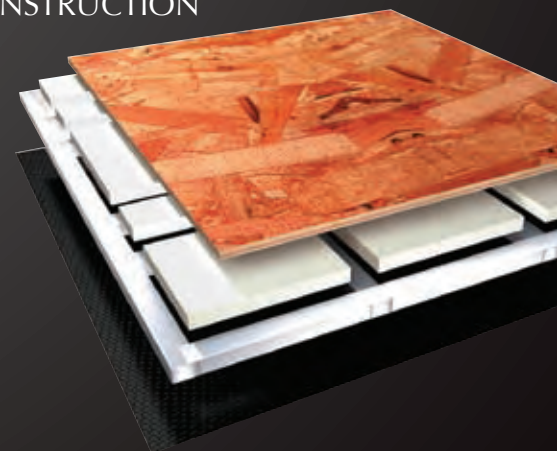
ROADMASTER RAIL RR4R CHASSIS

- 1** The Neptune features a rear-mounted aluminum radiator with stacked aluminum charged air cooler, for increased cooling capacity.
- 2** A 7,000 lb. hitch receiver gives the coach powerful towing capacity.
- 3** Dual fuel fills provide the convenience of filling the fuel tank from either side of the coach.
- 4** A larger 34" spacing between the frame rails offers greater side-to-side stability.
- 5** The Roadmaster chassis provides for full pass-through storage spaces, accommodating larger items with ease.
- 6** Cushion Air Glide Suspension provides a smoother ride with excellent handling and cornering.
- 7** Steel cage cockpit construction offers added safety.
- 8** The full-air anti-lock braking system (ABS) maintains traction and steering when braking on slick surfaces.
- 9** Heavy-duty steel undercarriage and firewall for unsurpassed safety, strength and durability.
- 10** Master the highways and byways with Neptune's rugged Cummins® ISB 340 HP engine with 660 lbs./ft. of torque and an Allison® 2500 MH 6-speed World Transmission. The new electronic shift pad offers added convenience.



4-LAYER FLOOR CONSTRUCTION (top to bottom)

- Structurwood™
- High-performance thermal insulation foam
- 1-1/2" aluminum tube
- Three-ply poly underbelly





Neptune[®]
2009

COLORS AND PATTERNS IN PERFECT HARMONY.

Leave it to Holiday Rambler to give you the most enticing choices of exterior colors and interior decors. Choose the one that fits your style — from boldly sophisticated to classic elegance. Then,

put it all together with your beautiful raised panel hardwood style cabinetry, and you've created a masterpiece all your own.



COCOA



STARDUST II



NEWPORT CHERRY II

UNMISTAKABLE QUALITY.

The hallmark of a Holiday Rambler is beautiful cabinetry with impeccable attention to detail. Raised panel hardwood doors provide a residential touch, while the decorative slide-out fascia trim adds elegance throughout the living areas. The storage spaces are as durable as they are attractive, with sturdy drawers and heavy-duty ball-bearing drawer guides.

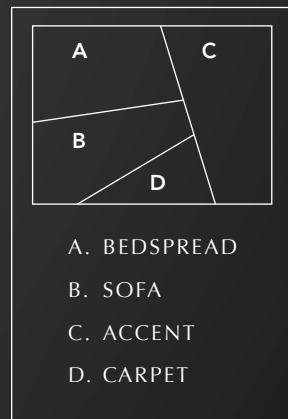


TOPAZ



Manufactured in, not added on. For added protection against stains, soil repellent is applied to virtually all upholstery fabric during the finishing process for superior coverage.*

*Brand and application of upholstery fabric protection may vary depending on date recreational vehicle was manufactured.





BODY CONSTRUCTION: FEATURES

- Smooth Gel Coat Fiberglass Exterior Walls
- Steel Cage Cockpit Construction
- Front Molded Fiberglass Caps
- Rear Molded Fiberglass Caps
- 17.5" Chrome Head Exterior Mirror
- One-Piece Generator Access Door
- Rear Engine Doors and Center Grille
- Fiberglass Engine Cover
- Panaview™ 1-Piece Front Windshield
- Interior Height 84"
- Metal Fuel Doors with Lock
- 30" Deep Bedroom Slide-Out Houses (37PBQ, 38PKQ, 39SBQ)
- Side-Hinged Baggage Doors, All Door Locations
- One-Piece Polyethylene Pass-Through Storage Compartments
- Full-Body Paint with Four-Color Painted Graphics, Awning with Metal Covers
- 3M Film Front Mask
- Carpeted Electric Flush-Floor Stepwell Cover
- Interior Rubber Entry Step with Stepwell Storage Bucket
- Exterior Double Entry Steps
- Rear Ladder

- Full-Length Mud Flap
- Undercoating

OPTIONS

- Storage Bay Slide-Out Tray, Pass-Through
- Standard Run Savings Package: 3-Camera Rear Vision System, Home Theater System, Six-Way Power Co-Pilot Seat with Power Footrest, Select Comfort Bed, 2000-Watt Inverter with Two Additional Batteries, Storage Tank Monitor System/RV Sani-Con 1-System

CHASSIS/ENGINE/SUSPENSION: FEATURES

- Roadmaster Raised Rail Chassis RR4R
- Cummins® ISB 340 HP EPA 2007 Low Torque Engine with Allison® 2500 MH 6-Speed World Transmission
- Engine Displacement: 6.7L/409 Cu. In.
- Torque: 660 lbs/ft. Max. Net at 1,600 RPM
- Block Heater
- Chrome Exhaust Tip Engine
- 75-Gallon Fuel Tank
- Dual Fuel Fill
- 160 Amp Alternator
- Rear Axle Ratio: 4.78:1
- Stainless Steel Wheel Simulators
- Four Gas Shock Absorbers
- Four Air Bags
- Second Ride-Height Valve and Auxiliary Spring to Front Axle
- Anti-Lock Braking System with Full Air Brake

- ATC Automatic Traction Control
- Prewire for Supplemental Braking System
- Air Cleaner Restriction Indicator
- Fuel/Water Separator
- Remote Transmission Fill
- Fully Automatic Hydraulic Leveling System
- 7,000 Lb. Hitch Receiver with Dual Connector 4-Pin or 7-Pin

COCKPIT: FEATURES

- Fiberglass Automotive Dash with Oxford® Burl Instrumentation Panel
- In-Dash AM/FM/CD Stereo Radio with Sirius-Ready Compatibility, Aux-in-Connection, SD Card Slot and Weather Band
- Power Sunvisors
- Pleated Front Privacy Drape with Braided Tie-Backs
- LCD Single Camera Rear Vision System
- 6-Quart Tank for Windshield Fluid
- Steering Wheel 18" 4-Spoke with Horn Pad and Logo
- Tilt/Telescopic Steering Wheel
- ICC Light Switch on Driver's Side Console
- Air Horns
- Molded Co-Pilot Side Console with Two-Tier Cup Holder
- Molded Pilot Side Console with Two-Tier Cup Holder
- Leatherette Pilot and Co-Pilot Cockpit Recliner Seats
- Six-Way Power Pilot Seat
- Carpeted Driver and Passenger Floor Mats

OPTIONS

- Six-Way Power Co-Pilot Seat with Footrest
- LCD 3-Camera Rear Vision System with Cameras in Exterior Mirrors
- Sirius Satellite Radio Tuner with Antenna
- GPS Navigation System

APPLIANCES AND ACCESSORIES: FEATURES

- Large Double-Door Refrigerator with Ice Maker 8 Cu. Ft.
- Stainless Steel High-Output Sealed Burner, 3-Burner Cooktop
- Removable Solid Surface Range Covers
- Spacesaver Convection Microwave
- 26" LCD Stereo Color TV with Remote Control in Cockpit Overhead (N/A: 38SBD, 38PKQ and 39SBQ)
- 37" LCD TV with Remote Control Facing Living Room (N/A: 35SBD, 37PBQ and 38PBD)
- 19" Bedroom Widescreen LCD TV
- Washer/Dryer Prep 38SBD (N/A with 38SBD Bunk Option)
- Curbside: Exterior Hook-Ups for DSS Dish, Cable, 110V Outlet with Hatch Door to Exterior
- Digital Satellite System Prep
- Curbside: Exterior Gas Line Hook-Up Prep for LP Accessories

OPTIONS

- Large Double-Door Refrigerator with Ice Maker 10 Cu. Ft. (N/A: 35SBD and 38SBD)
- Large Four-Door Refrigerator with Ice Maker (N/A with Pantry)
- Stainless Steel High-Output Sealed Burner, 3-Burner Cooktop with Oven
- Stainless Steel Spacesaver Microwave and Refrigerator (Any Combination) (N/A with Hardwood Raised Panel Doors on Refrigerator)
- Combination Washer/Dryer 38SBD (N/A with Bunk Option)
- Central Vacuum System

- 32" Flatscreen LCD TV in Front Cockpit
- Overhead IPO 26" LCD Stereo Color TV (N/A: 38SBD, 38PKQ, 39SBQ)
- Home Theater Surround Sound System with Sub-Woofer
- Bedroom DVD Player
- R5 KVH In-Motion Satellite
- Exterior Entertainment Center 32" LCD TV/AM/FM/CD Radio with Two Speakers; Exterior Entertainment Center on 35SBD, 38SBD and 38PBD (Only Available with Optional Euro-Recliner and Wall-Mounted Table on Curbside of Coach) (N/A: 38PKQ and 39SBQ)
- Fireplace (39SBQ Only)
- Multi-Satellite HD KU/KA Dish

INTERIOR: FEATURES

- Newport Cherry II Raised Panel Cabinetry
- Hardwood Raised Panel Doors on Refrigerator
- New Wallpaper Border inside Private Bath
- Heavy-Duty Ball Bearing Drawer Guides
- Wood Cabinet Drawer Boxes
- Solid Surface Kitchen Countertop and Backsplash with Under-Mounted Stainless Steel Sink with Two Sink Covers
- Kitchen Countertop Extension with Two Drawers Below, 110V Outlet under Extension (N/A: 37PBQ and 38PKQ) (N/A Drawers 39SBQ)
- Kitchen Countertop End Splash (37PBQ Only)
- Solid Surface Bath Lavatory Countertop with Integrated Bowl and Solid Surface Backsplash
- Laminated Dinette Countertops with Solid Surface Edge Treatment
- Laminated Nightstand Countertops with Solid Surface Edge Treatment
- Kitchen Pantry next to Refrigerator with Full-Height Roll-Out Storage Cabinet (N/A with Four-Door Refrigerator Option) (N/A: 35SBD)
- Kitchen Pantry next to Refrigerator with Adjustable Shelves in Upper Cabinet and Three Drawers Below (N/A with Four-Door Refrigerator Option) (35SBD Only)
- New Application of Raised Solid Surface Backsplash behind Cooktop with Tile Accent
- Laminated Tile Flooring in Kitchen, Bath and Entryway (N/A: 38PKQ)
- Full-Width Laminated Tile Flooring in Cockpit, Living Room and Kitchen (38PKQ Only)
- Soft Touch Padded Vinyl Ceiling
- Decorative Wood Slide-Out Fascia
- Flat Glass Mirror Living Room (35SBD, 38PKQ and 37PBQ)
- Hutch Cabinet in Living Room Area with Full-Height Mirror between Base Cabinet and Overhead (38SBD and 38PBD Only)
- Wood Grain Crown Molding in Bedroom and Living Area
- Oil Rubbed Bronze Cabinetry Hardware and Bath Accessories
- Hardwood Framed Pocket Doors with Flat Panel Insert Doors, Slide-Bolt Door Latch
- Oversized Rear Wardrobe Closet with Deluxe Mirror Door Frames Oil Rubbed Bronze (N/A: 35SBD, 38SBD and 38PBD)
- Blackout Day/Night Pleated Shades in Living Area and Bedroom
- Soil Repellent on Fabric

OPTIONS

- Decors: Topaz, Cocoa, Stardust II
- Full-Width Laminated Tile Flooring Cockpit, Living Room and Kitchen (N/A: 38PKQ)

FURNITURE: FEATURES

- Queen Bed with Overhead Cabinet and Nightstands (60" x 74": 35SBD, 38SBD, 38PBD) (60" x 80": 37PBQ, 38PKQ, 39SBQ)
- Arched Back Wood Booth Dinette with Side-Sliding Dinette Tabletop with Storage Access Rear Seat Base, Drawer in Front Seat Base (N/A: 38PKQ)
- Forward-Facing Seatbelts in Booth Dinette inside Living Area Slide-Out (N/A: 38PKQ and 39SBQ)
- Wood Pedestal Dinette Table with Extension, Two Freestanding Dinette Chairs and Two Folding Chairs (38PKQ Only)
- Roadside: New Style Fabric Easy Bed Sofa
- Curbside: New Style Fabric Love Seat Sofa (N/A: 38PKQ)

OPTIONS

- Select Comfort Bed IPO Standard Mattress
- Roadside: New Style Fabric Hide-A-Bed Sofa with Air Mattress
- Roadside: New Style Leatherette Hide-A-Bed Sofa with Air Mattress
- Roadside: New Style Leatherette Sectional Easy-Bed Sofa; Footrest on Each Side of Center Console (38PKQ Only)
- Roadside: New Style Leatherette Sectional Hide-A-Bed Sofa with Air Mattress and Footrest on Each Side of Center Console IPO Easy Bed and Table and Chairs (38PKQ Only)
- Roadside: Leatherette Ensemble Booth Dinette Includes Leatherette Hide-A-Bed Sofa with Air Mattress (Forward-Facing Seatbelts at Booth Dinette Location Not Available with This Option) (N/A: 38PKQ)
- Curbside: New Style Leatherette Love Seat Sofa (N/A: 38PKQ)
- Curbside: One Leatherette Euro-Recliner with Ottoman and Wall-Mounted Table with Pullout Countertop IPO Sofa (N/A: 38PKQ and 39SBQ)
- Hallway Bunks with Two Fold-Down DVD Players with Game Hook-Ups and Light at Each Bunk Location; Two Wireless IR Headphones; Bunk Ladder; Washer and Dryer Hook-Up (N/A with Bunk Selection) (38SBD Only)
- Freestanding Dinette with Two New-Style Freestanding Chairs and Two Folding Chairs (N/A: 38PKQ)



ELECTRICAL SYSTEMS AND LIGHTS: FEATURES

- 50 Amp 120V Distribution Panel and Power Cord
- Energy Management System
- 60 Amp Electronic 12V Power Converter
- Onan® 6.0 kW Diesel Generator
- Two 6V House Batteries
- Two 12V Heavy-Duty Chassis Batteries
- Battery Disconnect Switch at Front Door
- Exterior Power Entry Step with Light
- Interior Stepwell Entry Lights
- Water Pump Switch in Service Bay Area and Convenience Center
- Lights in Outside Storage Compartments
- Underhood Utility Light
- Two Recessed Ceiling Map Lights above Cockpit Seats
- Hallway Convenience Center
- New Decorative Lighting in Oil Rubbed Bronze Finish: Living Room Wall Light, Dinette Overhead and Cosmetic Vanity Light

OPTIONS

- 2,000-Watt Inverter with Two Additional Batteries (4 Total 6-Volt Batteries)
- Storage Compartment Tank Monitor Gauge
- Onan® 8.0 kW Quiet Diesel Generator

PLUMBING AND LP SYSTEMS: FEATURES

- Kitchen Stainless Steel Under-Mounted Sink with Single Lever Oil Rubbed Bronze Finish Faucet with Pullout Sprayer
- Central Water Filtration System
- New Bath Two-Handle Lavatory Faucet Chocolate Finish
- Demand Water System and Water Pump
- 10-Gallon LP Gas/Electric Water Heater with Electronic Ignition, DSI
- Winterization Valving System
- Water Heater Bypass Valving
- China Toilet with Sprayer
- Holding Tank Rinsing System
- Insulated Systems Compartment with Easy Access to Hook-Up
- Shower inside Wet Bay with Hot/Cold Water, Shower Head with Shut-Off
- Gravity and Pressurized Water Fill
- Contained Storage Area for Sewer Hose
- One-Piece Fiberglass Shower
- Shower Diverter, Hose and Head with Shut-Off, Oil Rubbed Bronze Finish with Oil Rubbed Bronze Slide Bar for Shower Head with Metal Soap Dish
- Oil Rubbed Bronze Finish Tri-Slide Shower Door with Rectangular Shower (35SBD Only)
- Oil Rubbed Bronze Finish Pivot Shower Door with Rectangular Shower (37PBQ Only)
- Radius Oil Rubbed Bronze Finish Shower Door Frame with Obscured Glass (N/A: 35SBD and 37PBQ)

OPTIONS

- RV Sani-Con 1-System – Holding Tank Flush System
- Bathtub IPO Shower, Neo-Angled IPO Radius

HEATING, VENTS AND AIR CONDITIONING: FEATURES

- Dual 13.5M BTU Air Conditioners with Ducted Air
- Electronic Ignition Furnace
- New Electronic Dash AC/Heat Climate Control System
- Kitchen Powered Attic Fan with Wall Control of Automatic Dome and Fan Power
- Bath Powered Attic Fan with Wall Control of Automatic Dome and Fan Power
- 12V Heater in Wet Bay; Heat Pad on Fresh Tank
- Wood Louver Air Return Grille for Furnace
- Metal Floor Registers Oil Rubbed Bronze

OPTIONS

- Dual 15M BTU Air Conditioner with Heat Pumps and Ducted Air
- Ceiling Fan in Bedroom

WINDOWS, DOORS AND AWNINGS: FEATURES

- Radius® Flush-Mounted Dual Pane Safety Glass Dark Tinted Slider Windows
- New Front Entry Door with Enlarged Walk-Through, Clear Glass, Removable Screen and Anti-Skid Steps
- Exterior Entry Door Grab Handle
- Eclipse Automatic Patio Awning
- Front Door Awning
- Topper Slide-Out Awnings Living Area and Bedroom
- Tinted Skylight in Bathroom with Protecta Glaze
- Private Bath Window (N/A: 35SBD, 38SBD and 39SBQ)
- Roof-Mounted Awning Units with Slide-Outs on Curbside at Patio Location (N/A: 35SBD, 38SBD and 38PBD)

OPTIONS

- Sidewall Bedroom Window Awning with Metal Cover and Painted Hardware (N/A: 37PBQ, 38PKQ and 39SBQ)
- Window Awning Living Area Slide-Out House Windows with Metal Cover and Painted Hardware
- Window Awnings Bedroom Wardrobe Slide-Out House with Metal Cover and Painted Hardware

SAFETY: FEATURES

- Fire Extinguisher
- Deadbolt Lock on Entrance Door
- 120V GFI Protected Circuit Kitchen, Bath and Exterior
- LP Gas Detector
- Smoke Detector
- Carbon Monoxide Detector
- Driver and Passenger Three-Point Seatbelts
- Third Brake Safety Light
- Egress Window

Due to continuous product improvement, please see the website for the latest in standards and options, specifications, and technical data. Go to www.holidayrambler.com.

Weights*	35SBD	37PBQ	38SBD	38PBD	38PKQ	39SBQ
Gross Vehicle Weight Rating	29,000	29,000	29,000	29,000	29,000	29,000
Gross Combined Weight Rating	33,000	33,000	33,000	33,000	33,000	33,000
Front Gross Axle Weight Rating	11,000	11,000	11,000	11,000	11,000	11,000
Rear Gross Axle Weight Rating	18,000	18,000	18,000	18,000	18,000	18,000
Measurements						
Wheelbase	204"	228"	240"	240"	240"	252"
Overall Length	35' 9"	37' 9"	38' 9"	38' 9"	38' 9"	39' 11"
Overall Height with A/C	12' 6"	12' 6"	12' 6"	12' 6"	12' 6"	12' 6"
Interior Height	84"	84"	84"	84"	84"	84"
Interior Width	94.5"	94.5"	94.5"	94.5"	94.5"	94.5"
Exterior Width	100.5"	100.5"	100.5"	100.5"	100.5"	100.5"
Tank Capacities** (Gal.)						
Water Heater	10	10	10	10	10	10
Gray Tank	55	55	55	55	55	55
Black Tank	39	39	39	39	39	39
Fresh Tank	95	95	95	95	95	95
LP Tank ***	39	39	39	39	39	39
Fuel Tank	75	75	75	75	75	75

* Towing capacity is limited by GCWR; your vehicle's towing capacity is the difference between the GCWR and the actual vehicle weight, including all water, fuel, passengers and cargo. Your towed vehicle should be equipped with auxiliary brakes if the weight of the towed vehicle exceeds 1,000 lbs. Consult your owner's manual for further towing information.

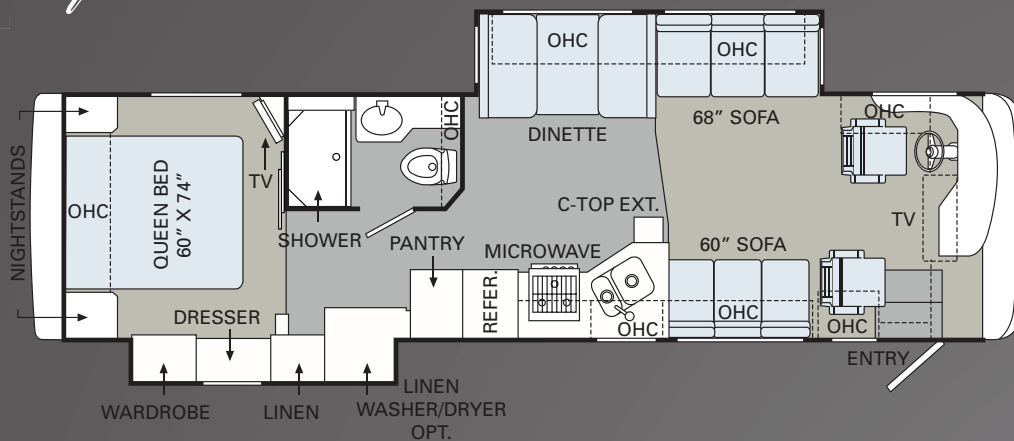
** All tank capacities are estimated based upon calculations provided by the tank manufacturers and represent approximate capacities. The actual "usable capacity" may be greater or less than the estimated capacities based upon fabrication and installation of the tanks.

*** Actual filled LP capacity is 80% of listing due to safety shut-off required on tank.

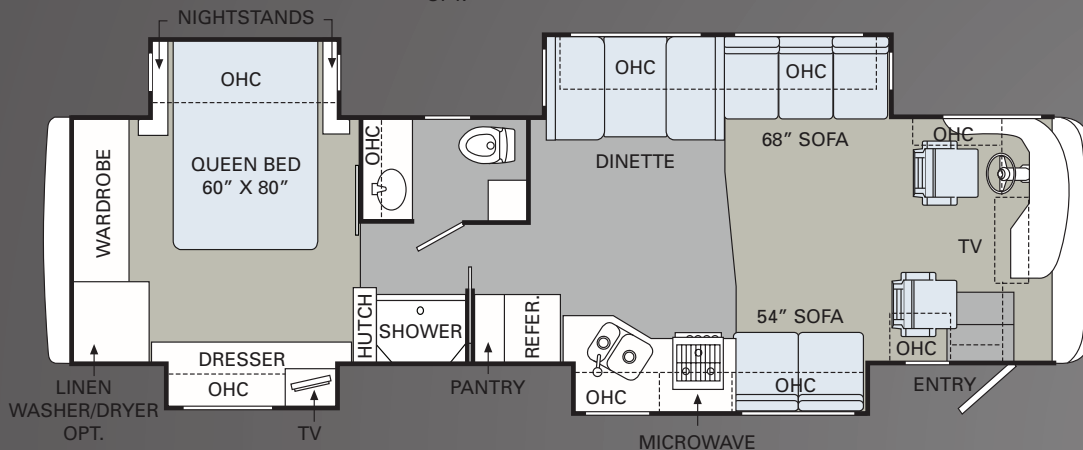
The actual overall length of the recreational vehicle may differ from that indicated in the brochure due to variances in the manufacturing process and/or installed components. The actual length may be greater or less than that indicated. Due to the large variety of options and floorplan arrangements available to our customers, actual weights for each unit can differ significantly. Holiday Rambler provides a weight sticker on each unit we produce which includes that unit's tank capacities and approximate weight. Consult your local Holiday Rambler dealer for unit availability and further information. The information printed in this brochure reflects product design, fabrication, and component parts at the date of printing. The manufacturer reserves the right, at any time, to make changes in product design or material or component specifications as its sole option, without notice. This includes the substitution of components of a different brand or trade name which will result in comparable performance. All information printed in this brochure is subject to change after the date of printing. Some features shown or mentioned in this brochure are optional and may only be available in selected floorplans. Photographs may show props or decorations that are not standard equipment on Holiday Rambler models. Holiday Rambler, the Holiday Rambler logo and its design, are registered trademarks. All other products and company names are trademarks and/or registered trademarks of their respective holders. While the color of the motorhome's exterior and the interior fabrics depicted in this sales brochure are fair and reasonable depictions, the colors depicted may not be an exact match of the actual colors because of the variances in photo-processing and variances caused by inserting the photographs within the sales brochure. Due to product improvements, changes during the model year and/or transcription errors that may occur, information represented within this brochure may not be accurate at the time of your purchase. If certain information is significant to your purchasing decision, please confirm the information with your dealer prior to submitting your order. Component part and appliance manufacturers issue limited warranties covering those portions of the recreational vehicle not covered by the Limited Warranties issued by Monaco Coach Corporation. To learn which specific component parts and appliances are excluded from the Limited Warranties issued by Monaco Coach Corporation, please contact your selling dealership or Monaco Coach Corporation directly, or review the warranty packet inside the recreational vehicle.



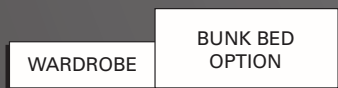
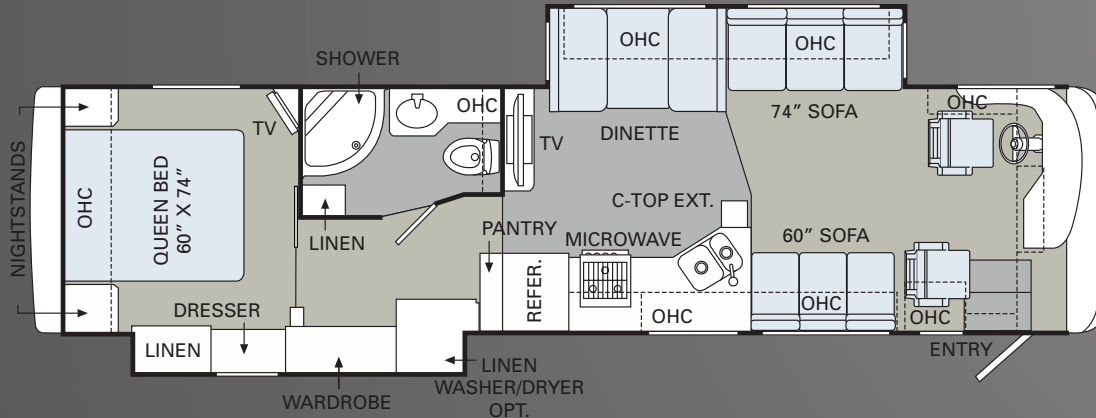
35SBD



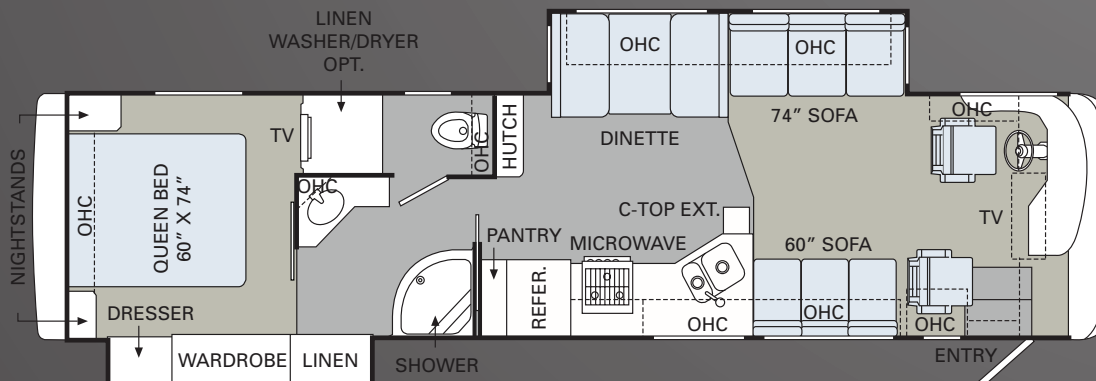
37PBQ

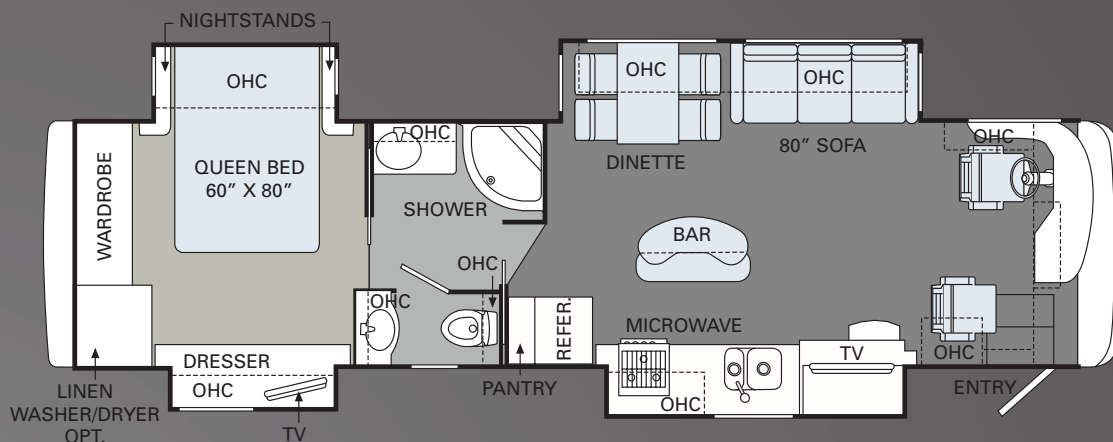


38SBD

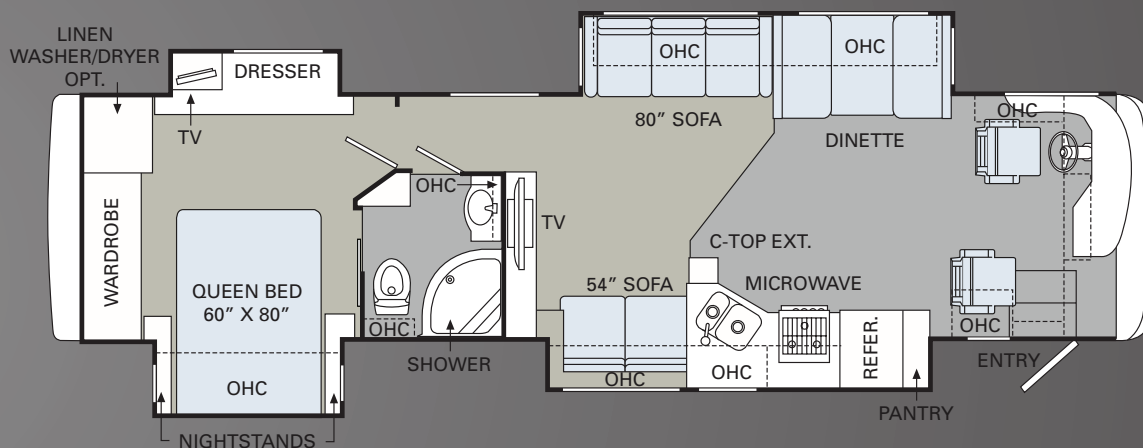


38PBD





38PKQ



39SBQ

CARPET
 TILE
 LAMINATE



H O L I D A Y R A M B L E R . C O M

Log on to our website anytime, night or day. It's your link to everything Holiday Rambler, including product news and updates, club events, dealer and service center info and much more. Take it for a test drive today.



WE'RE HERE. ANYTIME, EVERY TIME.

- Reach us anytime — literally — via our live customer support line.
- Drive in to one of our 350 Service Centers.
- Enjoy the first year free when you enroll in our Owner Advantage Roadside Assistance Program.
- See where it all begins with a tour of our facility in Oregon. Call 1-800-634-0855 to find out more.



HOLIDAY RAMBLER®

This is Living®

BEING DIFFERENT MAKES
ALL THE DIFFERENCE.

Take a closer look, and you'll discover that Holiday Rambler, a brand of Monaco Coach Corporation, gives you more industry "bests" than any other RV manufacturer. Like the incomparable ride and handling of the Roadmaster Chassis. The convenience of our 350 service centers. The peace of mind of 24/7 roadside assistance. The value of Monaco Financial Services. And the online support of holidayrambler.com. At Holiday Rambler, we've built our reputation by listening to you — and answering to you. And that's the difference that's made us the best.

WARRANTIES

12 MONTH/24,000 MILE basic limited warranty

5 YEAR/50,000 MILE limited warranty on aluminum or steel frame structure of sidewall, roof, front and rear cap

3 YEAR/50,000 MILE limited warranty on Roadmaster chassis

Applies to certain models. See owner's manual for complete details.

NAVIGATOR®



IMPERIAL™



SCEPTER®



ENDEAVOR®



AMBASSADOR®



NEPTUNE®



VACATIONER®



ADMIRAL®



ARISTA™



ATLANTIS®



AUGUSTA



TRAVELER®

