

NAVIGATOR<sup>®</sup>  
2009



HOLIDAY RAMBLER<sup>®</sup>

*This is Living<sup>®</sup>*



*Navigator*



## REACHING NEW HEIGHTS.

This is it. The flagship of America's favorite motorhomes. The 2009 Navigator by Holiday Rambler. Welcome aboard, where you'll find more elegance and luxurious comfort than ever before. The first thing you'll notice is that

everything gleams — from the ceramic tile floor to the new recessed ceiling design to the new optional glazed-finish cabinetry. Then, when you look closer, you'll see remarkable details, like new valances that match the intricate





hardwood fascia carvings. It's a feast for the eyes — and everything you'd expect when you reach the top of the line.

*Navigator*<sup>®</sup>  
2009



BISMARCK IV

KINGSBRIDGE

STAINED CHERRY



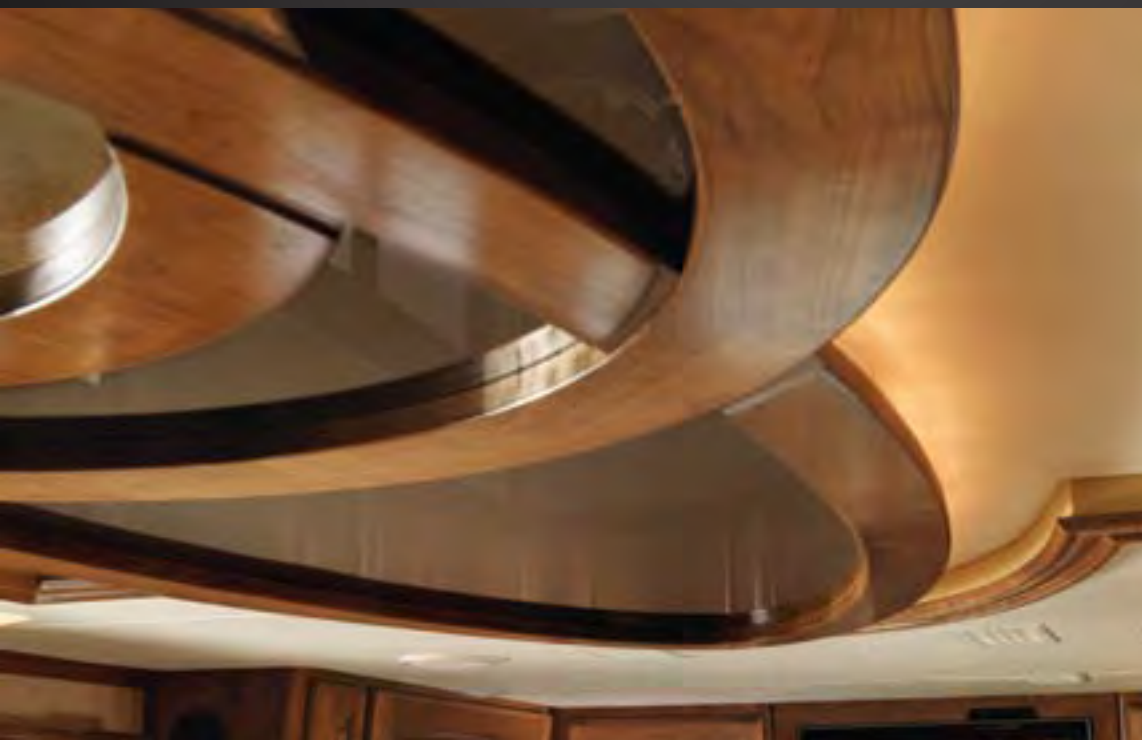




## JUST IMAGINE.

Picture yourselves enjoying life on the road in a whole new level of luxury. Where even the simplest meal feels like a celebration. The kitchen surrounds you with stunning woodwork, beautiful solid surface countertops and a stylish new mosaic tile backsplash. You'll also have deluxe appliances at your service, including an optional residential

refrigerator. Navigator's dining area features our ingenious legless table with a side-slide adjustment and two beautiful freestanding chairs. Overhead, the new ceiling design contains recessed surround sound speakers for your dining enjoyment. Shown below is the optional central vacuum system with a convenient toe-kick vacuum.





## CALL IT HOME.

This is all for you. From the new hardwood headboard to the plush pillowtop-hinged mattress to the roomy wardrobe closet. You can even upgrade from a queen to a king bed, if you choose. Shown at left is the new 26" LCD TV, and rounding out the entertainment center is a DVD player and an optional Bose® Wave Radio. As you can see above, you'll be pampered beyond compare in the spacious bathroom. A new option this year is radiant floor heating, for cozy warmth in cool weather.









## SEAT OF POWER.

You'll rule the road from the Navigator's cockpit, with more high-tech features at your fingertips and more comfort for a better driving experience. Highlights include GPS navigation (shown right), color rear vision with audio and the SEE-Vision security camera system — all for greater peace of mind. New safety-minded options include a Bluetooth® HandsFreeLink System® and the exclusive SafetyCruise collision avoidance system.





## THE ROADMASTER DIFFERENCE

Turn the key of the 2009 Navigator and prepare to experience the incomparable performance of the Roadmaster S-Series semi-monocoque chassis. Roadmaster is the only chassis manufacturer with a 100 percent commitment to only producing chassis for luxury motorhomes. In fact, every Roadmaster chassis is custom built for the exact model and floorplan. That means you'll enjoy a smoother ride, superior front-to-rear balance and unbeatable strength and reliability. We encourage you to take a few minutes to learn more about the many features that put Roadmaster in a class by itself.



## OOHS AND AHHS.

The 2009 Navigator makes a head-turning first impression, whether you're at cruising speeds or parked at your destination. It features dynamic new graphics and automatic, roof-mounted patio awnings. A new option this year is an exterior entertainment center with a 26" LCD TV and DVD player. As you can see below, an optional full pass-through storage tray and side-hinged baggage doors eliminate the hassles of retrieving items from the storage bays.

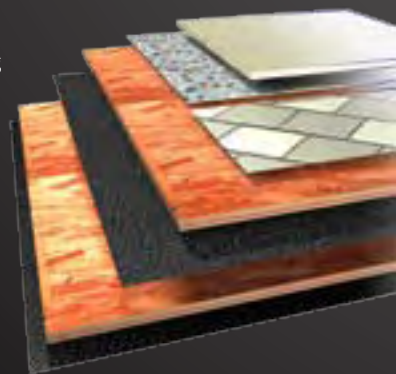
## ROADMASTER S-SERIES SEMI-MONOCOQUE CHASSIS

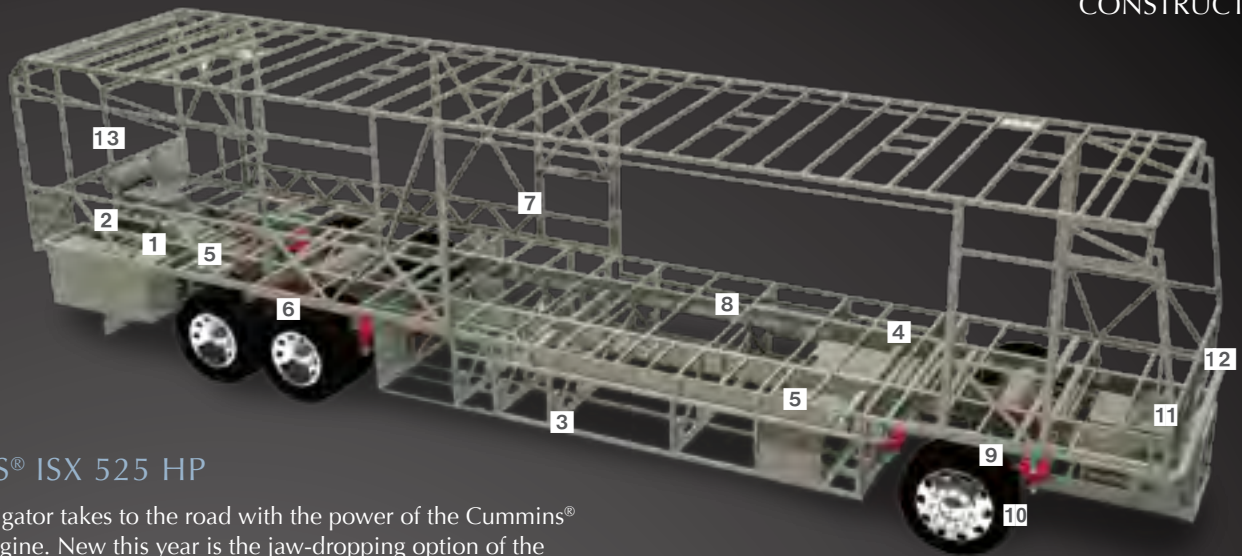
- 1** The three-point engine mounting system lowers the coach's center of gravity and reduces the amount of vibration that reaches the coach. The mounting also makes the engine easier to service by allowing the engine to be easily lowered through the bottom of the coach.
- 2** 10,000 lb. hitch receiver offers powerful towing capacity (15,000 lb. optional hitch).
- 3** Basement structure rust inhibitor: To prevent corrosion, the basement storage area is constructed with pre-primed steel with rust-inhibiting paint.
- 4** Dual fuel fill allows you to fill the tank from either side of the coach, for greater convenience and flexibility at the pump.
- 5** Allison® 4000 MH 6-speed transmission for smooth shifting; our exclusive use of synthetic transmission fluid allows for up to three-year maintenance intervals.



## 5-LAYER FLOOR CONSTRUCTION (top to bottom)

- Plywood and tile, or carpet pad and carpeting
- Oriented Strand Board (OSB)
- Decibel paper
- Oriented Strand Board (OSB)
- Waterproof Darco underbelly





## CUMMINS® ISX 525 HP

The 2009 Navigator takes to the road with the power of the Cummins® ISX 525 HP engine. New this year is the jaw-dropping option of the ISX 650 HP engine with an astounding 1950 lbs./ft. torque.

**6** Cushion Air Glide suspension system includes ten Sachs shocks and ten air bags, eight of which are outboard mounted with auto-leveling for greater stability, a smoother ride and the best handling in its class. Unique three-degree rear axle tilt perfectly aligns the engine, transmission and differential, minimizing stress on the drivetrain and reducing noise in the coach. Automatic Traction Control (ATC) eliminates wheel slippage in slick conditions and heightens control. Tag axle lifts for added maneuverability in tight spots.

**7** The semi-monocoque design, with trussed superstructure, distributes stress evenly throughout the entire chassis and adds strength to sidewalls and bays.

**8** Full-length frame rails fabricated from 3" by 8" by 1/4" 60,000 PSI structural steel; rails are spaced 44" on center for a wider stance and unmatched strength.



**9** Two-stage Jake brake system assures you of safely traveling steep grades while 6-wheel anti-lock brakes with disc brakes in front help you maintain control in severe road conditions.

**10** 295/80R/22.5 Goodyear steel-belted all-season tires ensure a safe and quiet ride.

**11** All chassis are equipped with steel cage construction and steel firewall for added safety.

**12** The power steering box allows for a 50-degree front wheel turn angle in both directions for better maneuverability and returns the steering wheel back to its center position to eliminate driver fatigue.

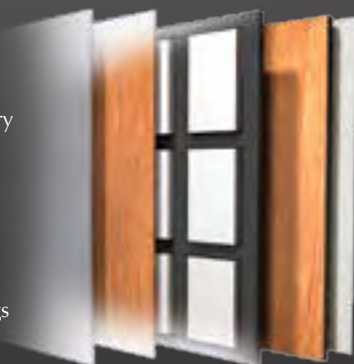
**13** Multiplex wiring, used throughout the coach and chassis, replaces cumbersome bundles of wire with separate modules. These modules communicate via a single wire, making servicing easier and reducing the overall weight of the RV. A service technician can simply hook up a laptop directly to the modules for easy troubleshooting.



## 6-LAYER SIDEWALL CONSTRUCTION

(left to right)

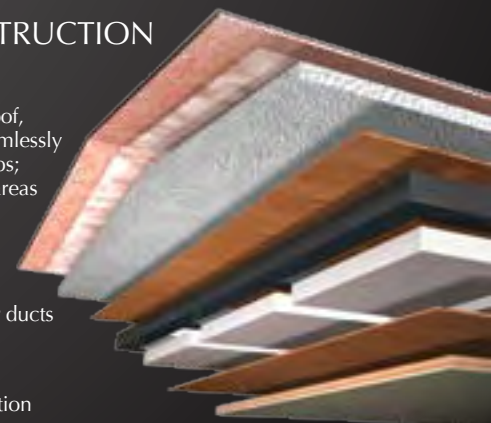
- Laminated gel coat fiberglass outer wall
- Luaun paneling
- State-of-the-art foam seals every nook and crevice
- Heavy-gauge tubular steel and steel plate backers for cabinet attachment
- Luaun paneling; walls are Vac-U-Bonded together
- Decorative vinyl wall coverings



## 8-LAYER ROOF CONSTRUCTION

(top to bottom)

- One-piece 1/4" thick fiberglass roof, crowned for water runoff and seamlessly joined with front and rear end caps; non-skid walkways on outboard areas for added convenience
- Vapor barrier
- Tapered bead foam supports the crowned roof; the center tunnel houses wiring and air conditioner ducts
- Marine grade plywood sheeting
- Tubular steel framework
- High-performance thermal insulation foam
- Luaun and vinyl paneling are Vac-U-Bonded
- Sound-absorbing, easy-to-clean padded vinyl interior headliner





Navigator<sup>®</sup>  
2009



BETTER  
STAIN  
PROTECTION

### COLORS AND PATTERNS IN PERFECT HARMONY.

Leave it to Holiday Rambler to give you the most enticing choices of exterior colors and interior decors. Choose the one that fits your style — from boldly sophisticated to classic elegance. Then, put it all together with your favorite cabinetry selection, and you've created a masterpiece all your own.

Manufactured in, not added on. For added protection against stains, soil repellent is applied to virtually all upholstery fabric during the finishing process for superior coverage.\*

\*Brand and application of upholstery fabric protection may vary depending on date recreational vehicle was manufactured.



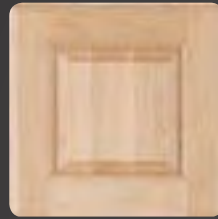
NATURAL CHERRY



STAINED CHERRY



NATURAL CHERRY  
GLAZED FINISH



NATURAL MAPLE



NATURAL OAK



STAINED OAK



CLARET CASCADE



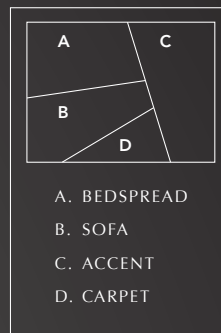
COPPER CANYON II



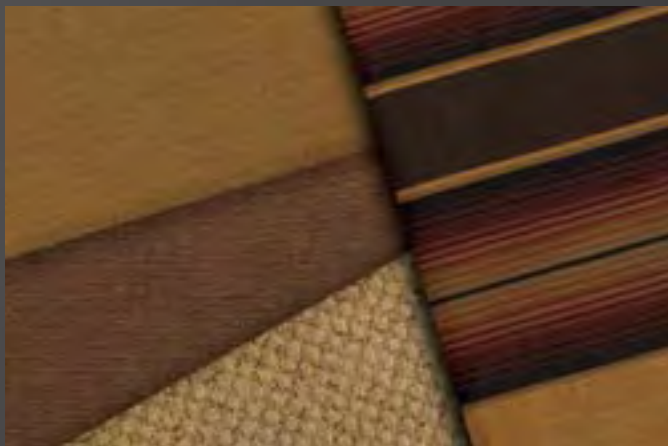
RALPH LAUREN PACKAGE:

Here's a feast for your senses. Our exclusive Ralph Lauren package offers upgraded features throughout the coach. Because we want your life on the road to be beautiful.

- › Exclusive Ralph Lauren Fabrics, Both Living Room and Bedroom
- › Upgraded Villa Furniture Featuring 2-Tone Ralph Lauren Fabric/Leather and Villa Dinette Chairs
- › Upgraded Galley and Lavatory Faucets
- › Upgraded Tumbled Stone Galley/Bath Backsplashes
- › Exclusive Fabrica Carpet
- › Additional Decorative Pillows in Ralph Lauren Fabrics
- › Decorative Lighting
- › Detailed Decorative Carved Headboard
- › Upgraded Carved Slide-Out Fascia
- › Upgraded Wallpaper and Ceiling Treatments
- › Black Microwave



RL: BLACK PEARL



RL: KINGSBRIDGE



RL: WINDERMERE



### BODY CONSTRUCTION: FEATURES

- Heavy-Duty Steel Superstructure with Steel Cage Cockpit Construction
- Seamless One-Piece Molded Crowned Fiberglass Roof
- All-Season Foam Insulated Roof
- Laminated Gel Coat Fiberglass Sidewalls
- Five-Layer Flooring with Two Layers of OSB Flooring
- Deluxe Full-Body Paint
- Panaview™ 1-Piece Front Windshield
- Double-Head Power-Controlled Heated Chrome Exterior Mirrors
- Halogen Fog Lamps
- Daytime Running Lights
- Recessed Side Docking Lights
- Dual Trumpet Air Horns
- Entry Step Storage
- Insulated Aluminum Baggage Doors with Power Locks
- Lined Pass-Through Storage Compartments
- Interlocking Aluminum Framed Slide-Out Houses
- Side-Hinged Baggage Doors with Electric Locks
- Rear Ladder
- Holiday Rambler Full-Length Mud Flap with Polished Stainless Steel Logo
- 3M Film Front Mask

### OPTIONS

- Slide-Out Storage Trays (Complete Pass-Through)
- Electric Slide-Out Storage Trays (Complete Pass-Through)

### CHASSIS/ENGINE/SUSPENSION: FEATURES

- Roadmaster S-Series Semi-Monocoque Chassis
- Cummins® ISX-525 HP Engine with Allison® 4000 MH 6-Speed World Transmission and Electronic Shifter
- Torque: (@ 1,200 RPM) 1,650 lbs./ft. Max. Net
- Engine Displacement 912"/15.0L
- Dual Fuel Fill
- 200 Amp Alternator
- Rear Axle Ratio: 4.33:1
- Tires: Goodyear 295/80R/22.5
- Polished Aluminum Wheels
- Full Cushion Air Glide Suspension with Ten Air Bags, 8 of Which Are Outboard Mounted, and Sachs Shock Absorbers
- Air Suspension with Two Ping Tanks
- Automatic Traction Control
- Anti-Locking Braking System with Front and Rear Disc Brakes
- Tag Axle with Anti-Lock Braking System
- Two-Stage Jacobs Engine Brake
- Prewire for Supplemental Braking System
- Engine Block Heater with Switch on Dash
- Sachs Shocks
- Ignition Key on Steering Column
- Automatic Air Leveling System
- Multiplex Chassis Wiring
- 10,000 Lb. Hitch Receiver and 7/4-Way Trailer Plug

### OPTIONS

- Cummins® ISX 650 HP Engine with Allison® 4000 MH 6-Speed World Transmission and Electronic Shifter Torque: 1950 lbs./ft.; 912" Engine Displacement
- Power Adjust Steering Column with Ignition Keyhole
- Electronic Adjustable Suspension System
- Hydraulic Leveling System (Replaces Standard Air Leveling System)
- Tire Pressure and Temperature Monitoring System
- 15,000 Lb. Hitch with Non-Liftable Tag When Tow Vehicle Is Hooked Up
- Dual Leveling Systems (Air/Hydraulic)

### COCKPIT: FEATURES

- New Kenwood In-Dash Stereo with AM/FM Stereo with Multi-Disc CD Changer
- GPS Navigation System
- Color Rear Vision System with Audio
- SEE-Vision Security/Exterior Cameras
- CB Radio Prep (Cable and Antenna)
- Electric Cockpit Blackout Shades with Manual Sunscreens and Slotted A-Pillars for Windshield Shade
- Power Driver's Side Window
- Adjustable Brake and Accelerator Pedals
- Lighted VIP Smartwheel® with Controls for Windshield Wipers, ICC and Cruise Control
- Integrated Dash Light Bar with Message Center
- 6-Way Power Pilot and Co-Pilot Seats with Electric Heat and Lumbar; Electric Sliding Seat Cushion and Memory Capabilities on Pilot Seat; Power Footrest on Co-Pilot Seat

### OPTIONS

- Power Cockpit Window Blinds
- Bluetooth® HandsFreeLink® in Cockpit
- CB Radio
- XM Satellite Stereo (Requires Subscription)
- Sirius Satellite Radio System (Requires Subscription)

**APPLIANCES AND ACCESSORIES: FEATURES**

- 17 Cu. Ft. Four-Door Refrigerator with Raised Panel Doors
- Recessed High-Output 2-Burner Cooktop with Flush-Mounted Covers
- Spacesaver Convection Microwave with Touch Control
- Power TV Antenna
- KVH R5 Digital Satellite System
- 37" LCD TV Mounted in Living Area (N/A: Brookstone and Bismarck IV)
- 37" LCD TV Mounted in Center of Coach (Brookstone, Bismarck IV)
- 26" LCD TV in Bedroom
- Home Theater System with DVD/CD Player
- Bedroom DVD Player
- Universal Remote System for Living Area TV

**OPTIONS**

- Residential Refrigerator with Additional Batteries
- Stainless Steel Refrigerator
- Combination Washer/Dryer
- Stackable Washer/Dryer (N/A: Adriatic)

- Central Vacuum System
- Dishwasher Drawer
- 32" LCD TV in Bedroom
- 37" Swing-Down LCD TV Mounted in Living Area Ceiling (N/A: Brookstone and Bismarck IV)
- Bose® Wave Radio in Bedroom
- KVH R6 In-Motion Digital Satellite System
- Multi-Satellite HD KU/KA Dish
- Exterior 26" LCD TV with Swing Arm
- Drop-Down Exterior 32" LCD TV (N/A: Brookstone and Coral)
- Pre-Wire Cargo Bay for HD Satellite Hook-Up

**INTERIOR: FEATURES**

- Stained or Natural Oak Cabinetry
- Dinette Wall Cabinet with Corian® Top
- Low-Friction Roller Drawer Guides
- New Recessed Ceiling Design
- Solid Surface Countertops Throughout
- Integrated Sinks in Vanity and Galley
- Mosaic Tile Galley Backsplash Design
- Mosaic Tile Vanity Backsplash Design
- Day/Night Shades with Blackouts Throughout with Mini Blinds in Kitchen and Bathroom
- Tile Aisle from Cockpit to Galley Area with Sculptured Carpeting on Each Side in Living Area
- Ceramic Tile in Kitchen, Bath and Cockpit
- Raised Panel Door for Private Bath
- Bedspread and Pillows
- Nightstands with Solid Surface Countertops
- Solid Surface Windowsills in Living Area
- Recessed Galley Area Surround Sound Speakers in Ceiling
- Pullout Trash Can next to Two Pullout Shelves in Lower Galley Cabinet
- Hardwood Drawer under Bed
- New Decorative Hardwood Slide-Out Fascia Design
- Decorative Hardwood Headboard in Bedroom; New Design Matches New Fascia Carving
- Decorative Valances in Living Area and Bedroom; New Design Matches Fascia Carvings
- Antique Silver Finish on Hardware Throughout

**OPTIONS**

- Interior Decors: Copper Canyon II, Claret Cascade

- Ralph Lauren Decors: Black Pearl, Windermere, Kingsbridge
- Stained or Natural Cherry Cabinets, or Natural Maple Cabinets
- Glazed Finish Cherry Cabinetry
- Central Vacuum Parts Storage Tray under Bed When Central Vacuum Is Optioned
- Ceiling Fan in Bedroom
- Solar Screens with Blackout Shades Throughout (Manual in Living Area, Manual in Bedroom)
- Power Vienna Shades
- Full-Tile Living Room Floor
- Plank Flooring in Kitchen and Bath
- Luxury Lifestyles Limited Edition Package: Stainless Steel Components Overlaid onto Exterior Paint, 5 Staged Layered Faux Painting on Slide Out Wood Carvings, Enhanced Inlaid Ceilings, Custom Backsplashes, Custom Etched and Painted Mirrors, Inlaid Tile Floor.

**FURNITURE: FEATURES**

- Legless Side-Slide Solid Surface Dinette Table with Two Freestanding Dinette Chairs and Two Folding Chairs
- Fabric/Leather Jackknife Sleeper Sofa
- Leather J-Lounge
- Queen Bed with Pillowtop-Hinged Mattress

**OPTIONS**

- King Bed (72" x 80")
- King Air Mattress with Remote
- Computer Desk with Leather Euro-Recliner and Ottoman
- Curbside: Leather Hide-A-Bed
- Curbside: Leather Hide-A-Bed with Air Mattress
- Curbside: Leather Sleeper Sofa

- Curbside: Fabric/Leather J-Lounge
- Roadside: Leather Sleeper Sofa
- Fabric/Leather Sectional Booth Dinette Ensemble
- Two Folding Chairs with Sectional Booth Dinette Ensemble



### ELECTRICAL SYSTEMS AND LIGHTS: FEATURES

- 50 Amp 120/240V Distribution Panel
- Power Cord Reel
- Onan<sup>®</sup> 10.0 kW QD Generator on Power Slide-Out Tray with Auxiliary Start Switch and Automatic Temperature Start
- 2,800 Watt Pure Sine Wave Inverter with Auto Gen Start and Auto Temp Start
- Pilot and Co-Pilot Map Lights
- Switches for Bedroom Decorative Lights on Both Sides of Bed
- Lighted Utility Center
- Underhood Utility Light
- 120V Outlet in Private Bath, Bed Base and Outside Storage Compartment
- Lighted Exterior Storage Compartments
- Two 6V Deep Cycle Coach Batteries
- Two 12V Deep Cycle Chassis Batteries (Three with ISX Engine Option)
- Surge Guard Automatic Transfer Switch
- Multiplex 12V Wiring for Dash/Instrument Panel Gauges and Interior of Coach
- Battery Disconnect Switch inside Coach with Two-Second Timer
- Battery Boost Switch
- Electronic Components in Passenger Overhead
- Multiplex Switches Throughout Coach
- Rope Lighting in Living Room and Bedroom Valances, under Galley and Bedroom Toe Kicks
- Courtesy Lighting in Stepwell and Bedroom
- Front and Rear Electrical Run Boxes
- Pin Light in Galley Under-Sink Storage
- 12V Distribution Panel
- New Decorative Lighting Throughout

### OPTIONS

- Curbside Accent Patio Lighting on Underside of Slide-Outs
- Solar Panel

### PLUMBING AND LP SYSTEMS: FEATURES

- Central Water Filtration System in Service Bay
- Manabloc Water System for Entire Coach
- Insulated Systems Compartment with Easy Access to Hook-Up
- Water Pump Switch in Galley, Bathroom and Service Bay
- China Toilet
- Super Service Center with Hot/Cold Water Chrome Faucet and Soap Dispenser
- Solid Surface Shower with Accent Color and Shower Caddy
- RV Sani-Con Tank Drainage System with Bracket for Hanging Hose
- Shower Head Volume Control
- Black Holding Tank Rinsing System
- Power Water Hose Reel
- Soap Dispenser in Kitchen

### OPTIONS

- InstaHot<sup>®</sup> Water System
- Bathtub

### HEATING, VENTS AND AIR CONDITIONING: FEATURES

- Aqua-Hot<sup>®</sup> Heating System
- Electronic AC/Heat Climate Control System
- Center Defroster Vents
- Three Low-Profile Ducted 15M BTU Roof Air Conditioners with Wall Thermostat and Heat Pump
- 12V Attic Fan with Wall Thermostat in Private Lavatory and Galley; Added Wood Trim to Vent Fan Cover

### OPTIONS

- Galley Low-Profile 110V Baseboard Heater
- Radiant Floor Heating in Living Area, Galley and Bath

### WINDOWS, DOORS AND AWNINGS: FEATURES

- Flush-Mounted Radius Dual Pane Safety Glass Dark Tinted Windows
- Front Entry Door with Air Seal and Removable Top Screen
- Keyless Remote Entry System with Pocket Remote
- Topper Awnings on Slide-Out Houses
- Carefree<sup>®</sup> Manual Window Awnings
- Roof-Mounted Girard<sup>®</sup> Automatic Front Patio Awning

### OPTIONS

- Girard<sup>®</sup> Automatic Front Door Awning
- Girard<sup>®</sup> Window Awnings on All Slide-Outs House Windows (except Private Lavatory Window)
- Roof-Mounted Girard<sup>®</sup> Automatic Rear Patio Awning



**SAFETY: FEATURES**

- Backup Alarm
- Fire Extinguisher
- Deadbolt Lock on Entrance Door
- Lighted Interior and Exterior Grab Handles
- 120V GFI Protected Circuit (Kitchen, Bath, Service Bay)
- LP Gas Detector
- Smoke Detector
- Carbon Monoxide Detector
- Integrated Pilot & Co-Pilot Three-Point Seatbelts
- Third Brake Safety Light
- Egress Windows

**OPTIONS**

- Security Safe
- Deluxe Security Alarm System
- SafetyCruise

Due to continuous product improvement, please see the website for the latest in standards and options, specifications, and technical data. Go to [www.holidayrambler.com](http://www.holidayrambler.com).

Weights*	Brookstone	Bismarck IV	Adriatic IV
Gross Vehicle Weight Rating	50,160	50,160	50,160
Gross Combined Weight Rating	60,160	60,160	60,160
Front Gross Axle Weight Rating	15,160	15,160	15,160
Rear Gross Axle Weight Rating	23,000	23,000	23,000
Tag Axle Weight Rating (lbs.)	12,000	12,000	12,000
Measurements			
Wheelbase	280"	280"	280"
Overall Length	44' 10"	44' 10"	44' 10"
Overall Height with A/C (w/o DSS option)	12" 6'	12" 6'	12" 6'
Interior Height	84"	84"	84"
Interior Width	96"	96"	96"
Exterior Width	100.5"	100.5"	100.5"
Tank Capacities** (Gal.)			
Gray Tank	70	70	70
Black Tank	40	40	40
Fresh Tank	100	100	100
LP Tank ***	25	25	25
Fuel Tank	150	150	150

\* Towing capacity is limited by GCWR; your vehicle's towing capacity is the difference between the GCWR and the actual vehicle weight, including all water, fuel, passengers and cargo. Your towed vehicle should be equipped with auxiliary brakes if the weight of the towed vehicle exceeds 1,000 lbs. Consult your owner's manual for further towing information.

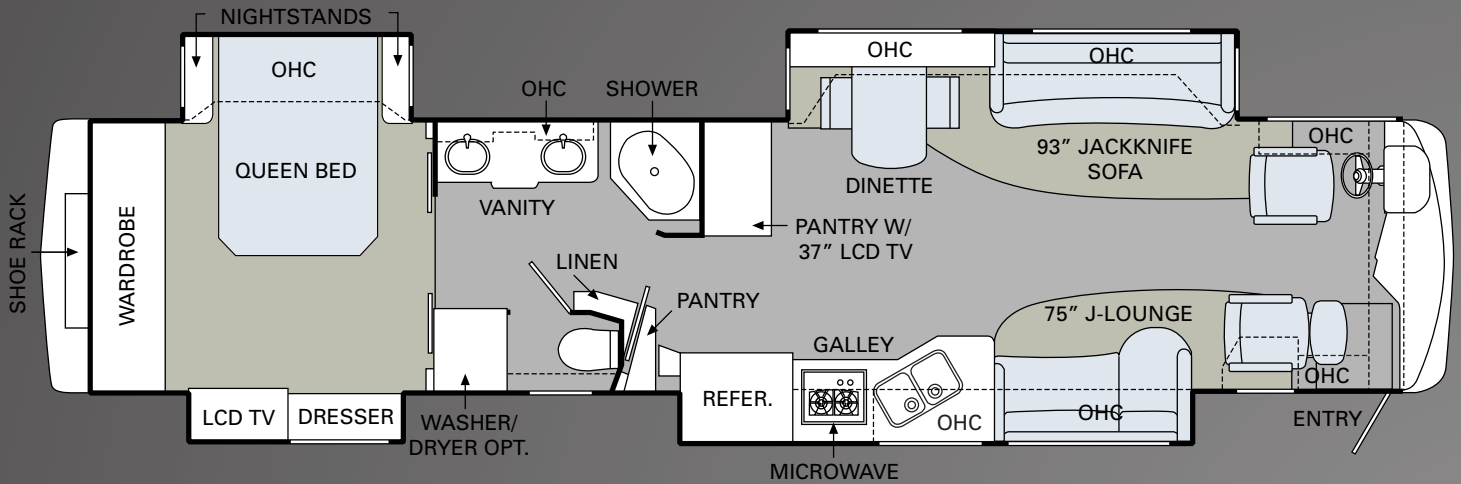
\*\* All tank capacities are estimated based upon calculations provided by the tank manufacturers and represent approximate capacities. The actual "usable capacity" may be greater or less than the estimated capacities based upon fabrication and installation of the tanks.

\*\*\* Actual filled LP capacity is 80% of listing due to safety shut-off required on tank.

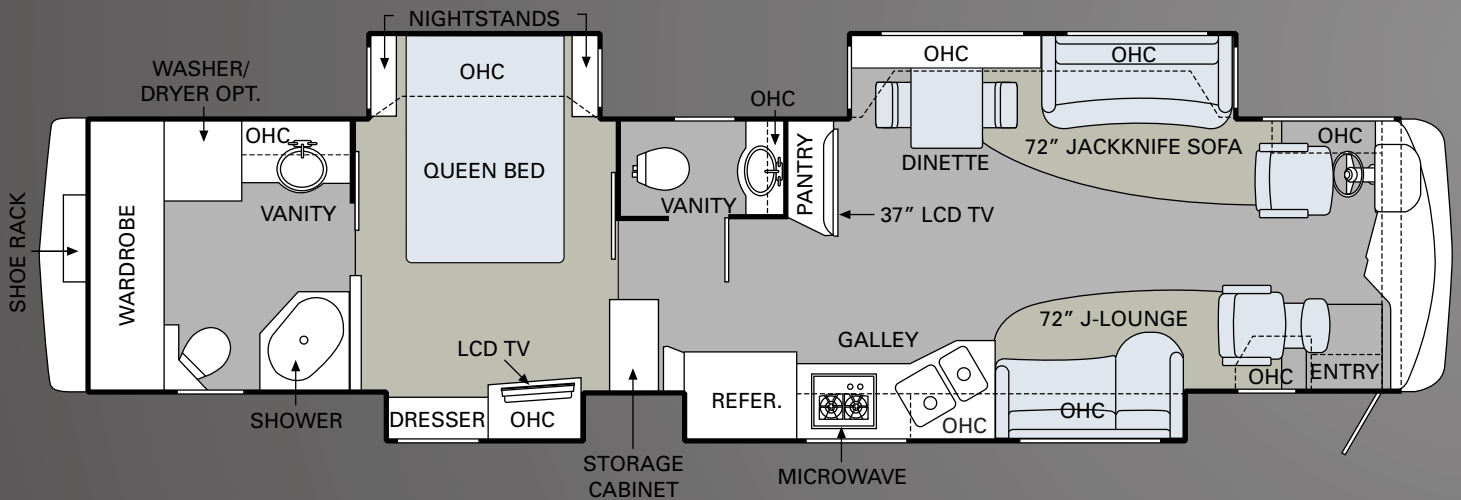
The actual overall length of the recreational vehicle may differ from that indicated in the brochure due to variances in the manufacturing process and/or installed components. The actual length may be greater or less than that indicated. Due to the large variety of options and floorplan arrangements available to our customers, actual weights for each unit can differ significantly. Holiday Rambler provides a weight sticker on each unit we produce which includes that unit's tank capacities and approximate weight. Consult your local Holiday Rambler dealer for unit availability and further information. The information printed in this brochure reflects product design, fabrication, and component parts at the date of printing. The manufacturer reserves the right, at any time, to make changes in product design or material or component specifications as its sole option, without notice. This includes the substitution of components of a different brand or trade name which will result in comparable performance. All information printed in this brochure is subject to change after the date of printing. Some features shown or mentioned in this brochure are optional and may only be available in selected floorplans. Photographs may show props or decorations that are not standard equipment on Holiday Rambler models. Holiday Rambler, the Holiday Rambler logo and its design, are registered trademarks. All other products and company names are trademarks and/or registered trademarks of their respective holders. While the color of the motorhome's exterior and the interior fabrics depicted in this sales brochure are fair and reasonable depictions, the colors depicted may not be an exact match of the actual colors because of the variances in photo-processing and variances caused by inserting the photographs within the sales brochure. Due to product improvements, changes during the model year and/or transcription errors that may occur, information represented within this brochure may not be accurate at the time of your purchase. If certain information is significant to your purchasing decision, please confirm the information with your dealer prior to submitting your order. Component part and appliance manufacturers issue limited warranties covering those portions of the recreational vehicle not covered by the Limited Warranties issued by Monaco Coach Corporation. To learn which specific component parts and appliances are excluded from the Limited Warranties issued by Monaco Coach Corporation, please contact your selling dealership or Monaco Coach Corporation directly, or review the warranty packet inside the recreational vehicle.



Brookstone



Bismarck IV

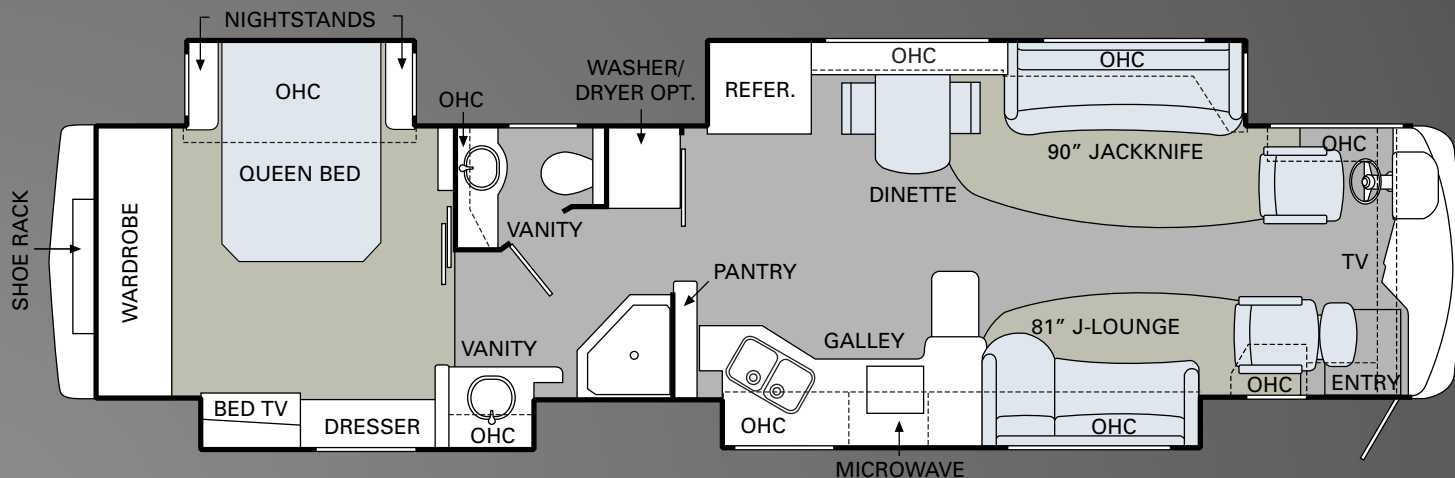


H O L I D A Y R A M B L E R . C O M

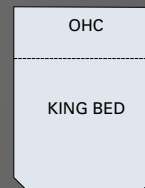
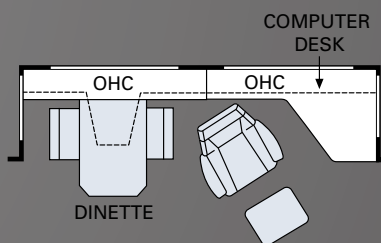
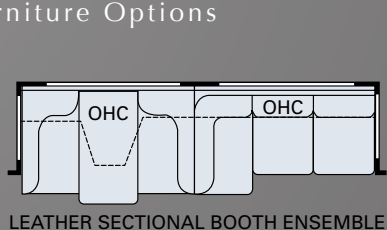
Log on to our website anytime, night or day. It's your link to everything Holiday Rambler, including product news and updates, club events, dealer and service center info and much more. Take it for a test drive today.



Adriatic IV



Furniture Options



CARPET | TILE



WE'RE HERE. ANYTIME, EVERY TIME.

- Reach us anytime — literally — via our live customer support line.
- Drive in to one of our 350 Service Centers.
- Enjoy the first year free when you enroll in our Owner Advantage Roadside Assistance Program.
- See where it all begins with a tour of our facility in Oregon. Call 1-800-634-0855 to find out more.



HOLIDAY RAMBLER®  
*This is Living*

BEING DIFFERENT MAKES  
ALL THE DIFFERENCE.

Take a closer look, and you'll discover that Holiday Rambler, a brand of Monaco Coach Corporation, gives you more industry "bests" than any other RV manufacturer. Like the incomparable ride and handling of the Roadmaster Chassis. The convenience of our 350 service centers. The peace of mind of 24/7 roadside assistance. The value of Monaco Financial Services. And the online support of holidayrambler.com. At Holiday Rambler, we've built our reputation by listening to you — and answering to you. And that's the difference that's made us the best.

WARRANTIES

12 MONTH/24,000 MILE basic limited warranty

5 YEAR/50,000 MILE limited warranty on aluminum or steel frame structure of sidewall, roof, front and rear cap

3 YEAR/50,000 MILE limited warranty on Roadmaster chassis

Applies to certain models. See owner's manual for complete details.

NAVIGATOR®



IMPERIAL™



SCEPTER®



ENDEAVOR®



AMBASSADOR®



NEPTUNE®



VACATIONER®



ADMIRAL®



ARISTA™



ATLANTIS®



AUGUSTA



TRAVELER®

