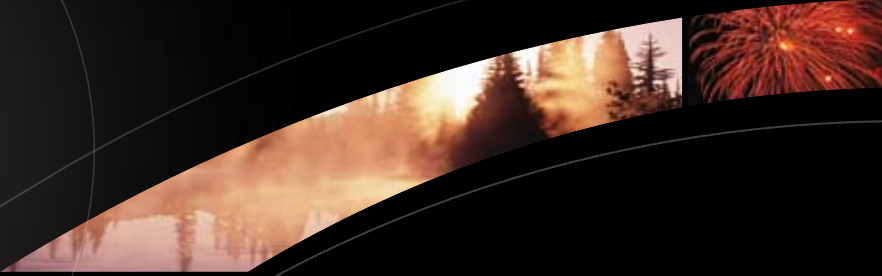


2007 PRESIDENTIAL



HOLIDAY RAMBLER®

This is Living®





PRESIDENTIAL SUITE



This is Living[®]

WE'RE HERE.
ANYTIME, EVERY TIME.

24/7

ASSISTANCE

SALES • TECH • ROADSIDE



- Reach us anytime — literally — via our live customer support line.
- Drive in to one of our 350 Service Centers.
- Enjoy the first year free when you enroll in our Owner Advantage Roadside Assistance Program.
- See where it all begins with a tour of one of our facilities in Indiana or Oregon. Call 1-800-650-7337 or 1-800-634-0855 to find out more.



36RLT | NEW VINTAGE OAK | BRIGHTON BLUE

THE PRESIDENTIAL SUITE. WHERE FUN AND LUXURY MEET.

Life on the road is full of fun and adventure. Now you can add luxury and style into the mix with the 2007 Presidential Suite. The stunning interior balances comfort and charm with modern conveniences that make life on the road more enjoyable. When you're not making the most of the great outdoors, the Presidential's interior will delight you with special touches, like plenty of overhead cabinets above the new easy bed sleeper sofa, a residential-style raised panel entertainment center with a pullout computer keyboard drawer, and a freestanding dinette with four chairs.

The Presidential presents loads of options – including floorplans with up to four slide-outs and special features, like an optional fireplace with a decorative hardwood frame. And, because it's a Holiday Rambler, you can bet it's rugged, too, with a solid Alumaflex® structure and durable multi-layered construction. So make the most of your time on the road with a towable that brings a bit of luxury to your fun – the 2007 Presidential Fifth Wheel Suite from Holiday Rambler.



A. C.



D.



B.

- A. Optional In-Floor Safe
- B. Large External Storage (147 Cu. Ft.)
- C. Pleated Day/Blackout Shades Throughout
- D. Optional Built-In Central Vacuum with Deluxe Tools



36RLT | NEW VINTAGE OAK | BRIGHTON BLUE

A TRUE HOME AWAY FROM HOME.

Seemingly small details work together to create an attractive and organized kitchen. It starts with raised panel cabinet doors with a new vintage oak finish. The radius corner Corian® countertop blends seamlessly into a backsplash, a composite sink and recessed high-output range. There are even color-matched sink covers, a two-piece Corian® range cover and a built-in knife holder. Next to the 8-cubic-foot refrigerator you'll find a convenient roll-out pantry with three baskets. Or step up to a 12-cubic-foot, two-way, four-door refrigerator complete with ice maker.

The Presidential Suite's bathroom puts everything you need close at hand. A modern, obscure glass door opens to a one-piece radius shower, while the sink area comes complete with electric outlets and a mirrored medicine cabinet with cosmetic light.

Bedroom slide-outs add comfort and storage with a chest of drawers, a large window and a deeper, cedar-lined wardrobe. You'll enjoy restful nights in the spacious king bed, or opt for a queen bed with nightstands – both beds have a residential style headboard and decor-matching bedspreads.



PRESIDENTIAL TRAVEL TRAILER



This is Living





34SKD | NEWPORT CHERRY | MANOR HOUSE

TRAVEL IN STYLE.

The 2007 Presidential travel trailer reaches new heights of style with surprising roominess and a residential look. For 2007, we added new carpet choices in the living area, along with an easy bed sleeper sofa and a glider recliner – both also available in OptimaLeather™. You have the option of adding a 20- or 24-inch television to complete the home theater surround sound stereo system.

You'll find enough space and conveniences in the kitchen to create memorable meals on the go.

You can choose from three refrigerator sizes and can even add a washer and dryer. All the cabinets feature toe kick bases and the drawers have low-friction roller guides. It's that kind of attention to detail that makes the Presidential something special. And speaking of special, the slide-out bedroom has a spacious king bed, and there's still plenty of room for personal belongings in the chest of drawers and roomy wardrobe. At the end of the day, you can track your travels at the desk with a view from the window.

A BEAUTIFUL REFLECTION OF YOU.

Holiday Rambler makes it easy to take your style on the road. We offer a variety of decors — each as lovely as the next with rich fabrics, lustrous woods, eye-catching accents and stunning exterior graphics. So the problem isn't finding a look you like — it's narrowing it down to just one.



ABBAY ROAD



MANOR HOUSE



Independent front power landing jacks provide stability at the touch of a button.



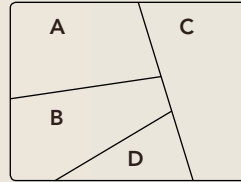
Our tandem axles feature sealed bearings for maximum protection with no maintenance.



The triple entry step is mounted directly to the frame for the ultimate in safety and durability.



BRIGHTON BLUE



- A. BEDSPREAD
- B. SOFA
- C. ACCENT
- D. CARPET



NEW VINTAGE OAK



NEWPORT CHERRY



SEASPRAY

PRESIDENTIAL HARDWARE

Our elegant cabinet hardware design features an antique brass finish.



BETTER
STAIN
PROTECTION

Manufactured in, not added on. For added protection against stains, soil repellent is applied to virtually all upholstery fabric during the finishing process for superior coverage.*

*Brand and application of upholstery fabric protection may vary depending on date recreational vehicle was manufactured.



Dependable Carrier rooftop air conditioners with dehumidifier and remote control. Upgrade from a 13,500 BTU to 15,000 BTU unit on the travel trailer or add a second high-capacity unit on the fifth wheel.



BriteTek™ Roof lasts longer than the competition's and cuts down on black streaking.



Drawers and pullouts operate smoothly and stand up to years of wear and tear thanks to metal drawer guides.

STAY COOL ON THE INSIDE.

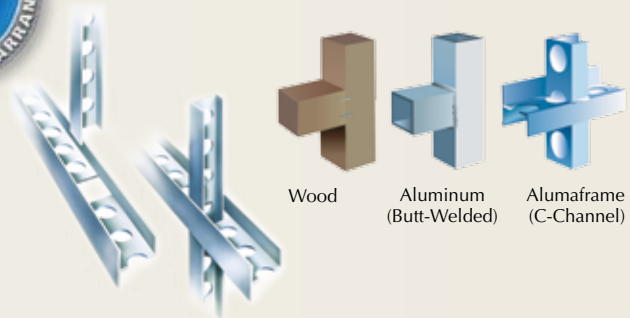


Holiday Ramblers are cooler than other RVs — literally. When put to the test in a thermal chamber, temperatures inside other RVs rose almost 30% more every hour than the Holiday Rambler model.* The secret lies in our exclusive, multi-layer insulation which blocks heat out, keeping the inside nice and cool.

* Test performed by an independent test facility, February, 1999. Based on measurements taken every 15 minutes.

ALUMAFRAME® CONSTRUCTION SINCE 1966:

The Presidential features Holiday Rambler's exclusive Alumaframe® Superstructure. Our revolutionary system of aluminum C-Channel crossmembers runs the entire length of the unit, with double-welded intersections for added strength. This rigid design is both lighter and sturdier than wood or tubular aluminum frames — and much more reliable than butt-welded or screwed joint designs. From dirt roads to potholes, you can count on Alumaframe to handle the relentless stresses of the road and provide superior structural integrity for many years to come.



TRAILAIR® AIR RIDE SUSPENSION SYSTEM:

The optional Trailair suspension is a revolutionary new system that lets the RV's axles work together instead of opposing each other. Included in the Trailair suspension is a horizontal, axle-mounted air bag that absorbs road bumps, keeping them away from the RV. This air-enhanced component results in a safer, smoother and more comfortable ride, plus easier, more stable towing to protect your cargo.



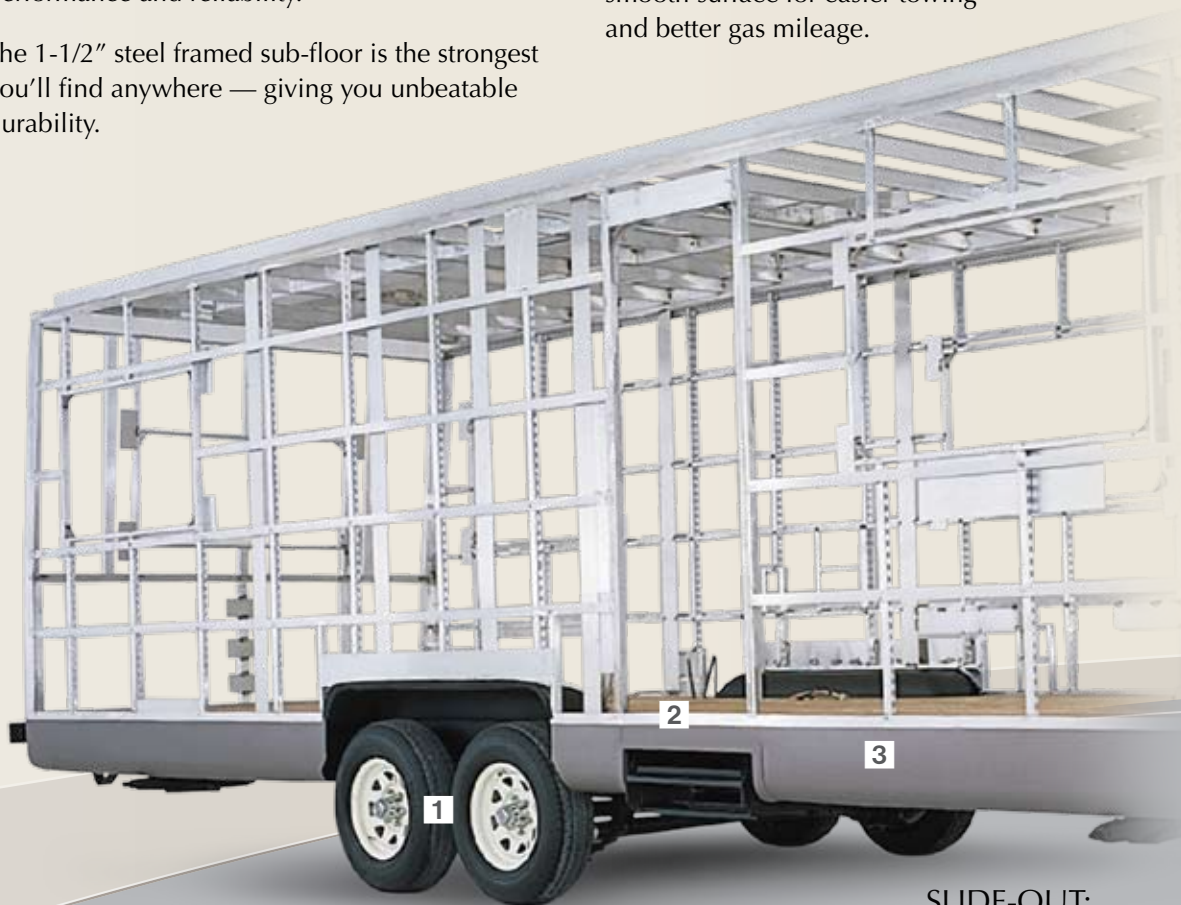
10-LAYER ROOF CONSTRUCTION (top to bottom)

- Peaked roof with BriteTek™ exterior
- Luaun backer
- Thick, tapered bead foam insulation
- Aluminum double I-beam superstructure filled with fiberglass insulation
- Vapor barrier
- Structure foam: thermal insulative barrier
- Vapor barrier
- 1/2" bead foam insulation
- Foam padding for extra insulation and interior noise reduction
- Padded vinyl ceiling

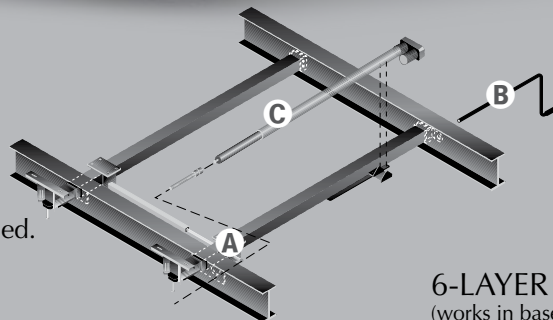


- 1 Sealed Bearing axles combine with electric brakes and shock absorbers to give you superior performance and reliability.
- 2 The 1-1/2" steel framed sub-floor is the strongest you'll find anywhere — giving you unbeatable durability.

- 3 The heated, fully enclosed underbelly provides exceptional insulation for the tanks and a smooth surface for easier towing and better gas mileage.



- A Bearing packs are bolted in 4 places, locking the gear and rack in place.
- B A manual crank and extension rod comes standard with every unit, to serve as override if needed.
- C Actuator motor is positioned to provide smoother movement and reduce twisting on the slide-out room.



SLIDE-OUT:

When you purchase a Holiday Rambler, you can be sure the slide-out boxes are some of the strongest and most reliable you'll find anywhere. In addition, the actuator has a mechanical room lock that is built in, and there are adjustable built-in stops for in and out positions.

6-LAYER FLOOR CONSTRUCTION

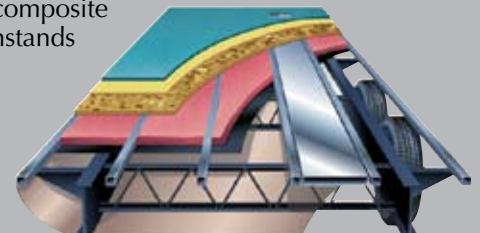
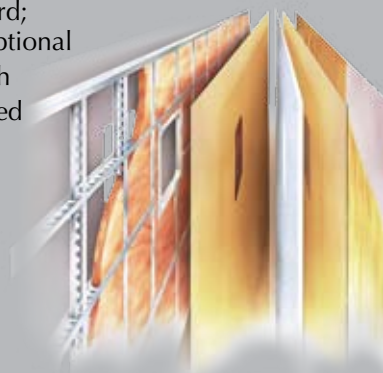
(works in basement) (top to bottom)

Your fifth wheel or travel trailer features a six-layer floor and fully enclosed and insulated underbelly. The smooth underbelly contains freshwater and wastewater tanks, dump valves, wiring harness and heating ducts, which help keep the fluid tanks from freezing and improve the overall insulation factor of your Presidential. The smoothness of the underbelly provides an unrestricted air flow that results in easier towing and improved gas mileage. And the outer shell of the undercarriage is made of rugged composite material that withstands damage from road debris. In addition, the frame is coated with a rust-inhibiting paint.

6- LAYER SIDEWALL CONSTRUCTION

(left to right)

- Smooth .040 aluminum is standard; high-gloss gel coat fiberglass is optional
- Interlocking C-Channel filled with 1-1/2" fiberglass insulation bonded in place so it doesn't sag or leave spaces uninsulated
- Vapor barrier
- Bead foam adds comfort, saves energy and provides a thermal insulative barrier
- Vapor barrier
- Interior paneling





BODY AND FRAME CONSTRUCTION: FEATURES

- Alumaframe® Superstructure
- Z-Frame Superstructure
- Vinyl Exterior Graphic Package Color
- Wrap Storage Door
- Smooth .040 Aluminum Exterior Walls
- Front Molded Fiberglass Cap
- Rear Molded Fiberglass Cap
- 3/8" Foam Core, Thermal Barrier Laminated Sidewall Structure
- Flat Floor Construction Bathroom to Master Bedroom
- Color-Coordinated Painted Skirts
- 1-1/2" Steel Framed Sub-Floor
- Steel Framed and Insulated Bathroom Floor
- Laminated 5/8" OSB Flooring
- Enclosed and Heated Underbelly
- Heated and Insulated Alcove Storage Underbelly
- Supersized Unobstructed Pass-Through Alcove Storage – 147 Cubic Feet
- Large Sliding Service Access Panels
- Frame-Mounted Entry Step
- Aluminum Roof Structure with Double I-Beam Roof Rafters 16" On-Center
- 10-Layer Roof and 6-Layer Sidewall Construction
- BriteTek™ Exterior Roof Material
- Triple Vapor Barrier in Roof
- Soft Padded Vinyl Ceiling
- Flat Floor Slide-Out in Main Living Area
- Gel Coat, Insulated Oversized Exterior Storage Door with Gas Struts
- Split Storage Door Gas Strutted under Alcove
- Trunk Lid Frame Storage under Alcove
- PVC Coin Pattern Floor in Alcove Storage Area
- Sealed Bearing Tandem Axles with Electric Brakes and Shock Absorbers
- Radial Tires 16"
- Aluminum Wheels (4 wheels)
- Trailair® Equa-Flex Suspension System
- Independent Front Power Landing Jacks
- Spare Tire with Sport Wheel with Carrier Recessed into Underbelly
- Stabilizer Jacks
- Rear Ladder
- Easy Access Snap Pins for Landing Jacks
- Linear Actuator Slide-Out Mechanism

OPTIONS

- Exterior Paint
- Quick Draw Electrical Rear Leveling ILO Standard Stabilizer Jacks
- Trailair® Center Point Suspension
- Slide-Out Storage Tray under Bath Deck
- Rear-Mounted Bike Rack with Three Bike Capacity

APPLIANCES: FEATURES

- 8 Cu. Ft. Refrigerator
- Wedgewood High-Output 3-Burner Range with Oven
- Two-Piece Corian® Solid Surface Range Cover
- Drawer under Stove
- Spacesaver Microwave with Built-In Exhaust Fan
- Home Theater with Surround Sound and DVD Player
- Washer/Dryer Prep

OPTIONS

- 8 Cu. Ft. 2-Way Refrigerator with Ice Maker (N/A: 37RLQ, 37SKQ)
- 10 Cu. Ft. 2-Way Refrigerator without Ice Maker
- 10 Cu. Ft. 2-Way Refrigerator with Ice Maker (N/A: 37RLQ, 37SKQ)
- 12 Cu. Ft. 2-Way 4-Door Refrigerator with Ice Maker (N/A with Roll-Out Pantry Option) (N/A: 37RLQ, 37SKQ)
- 12 Cu. Ft. 2-Way 4-Door Refrigerator without Ice Maker (N/A with Roll-Out Pantry Option)
- Three-Burner Cooktop without Oven
- Convection Spacesaver Microwave
- 32" Sharp Aquos LCD Color TV with Remote Control in Living Area
- 20" Color TV with Remote Control in Bedroom
- Built-In Central Vacuum, Deluxe Tools, Three Replacement Bags
- Vented Front Load Washer/Dryer
- Built-In Safe

INTERIORS: FEATURES

- New Vintage Oak Cabinetry
- Raised 6-Panel Woodgrain Passage Doors
- Raised Panel Cabinet Doors
- Antique Brass Finish Cabinet Hardware
- Deluxe Low-Friction Roller, Full-Extension Drawer Guides
- Raised Panel Refrigerator Door Insert
- Residential Hardwood Desktop
- Hardwood Top on Chest of Drawers
- Radius Corner Corian® Solid Surface Kitchen Countertop with Composite Sink, Built-In Knife Holder and Recessed Range
- Corian® Solid Surface Color-Matched Kitchen Sink Covers
- Radius Corner Corian® Solid Surface Bathroom Countertops with Composite Sink
- Corian® Countertop Backsplash
- Kitchen Trash Can
- Toe Kicks at Base of Cabinets
- Roll-Out Pantry with Cabinet next to Refrigerator with Three Baskets
- Pantry/Closet at Entry Door with Adjustable Shelves (37RLQ, 37SKQ)
- Raised Panel Entertainment Center Drawers with Deluxe Full-Extension Guides
- Workstation with High-Back Desk Chair (N/A: 36RLT)
- Pullout Keyboard Drawer Integrated into Entertainment Center (N/A with a Desk) (36RLT)
- Decorative Wall Clock
- Overhead Cabinets in Main Floor Slide-Out above Sofa

INTERIORS: FEATURES (CONTINUED)

- Units with Washer/Dryer Available, Hamper in Lavatory Base
- Washer/Dryer Cabinet with Woodgrain Door
- Cedar-Lined Bedroom Wardrobe
- Bedroom TV Cabinet with Door
- Magazine Rack Incorporated into Medicine Cabinet in Bathroom
- Smoked Glass in Entertainment Center Door
- Wainscoting and Chair Rail in Living Room Area
- Woodgrain Paneling in Bathroom/Bedroom Hallway
- Kitchen Countertop Extension with Radius Corners (N/A: 36RLT)
- Island Bar with Radius Corner Corian® Solid Surface Countertop and Spacious Storage (36RLT)
- Tip-Out Tray by Sink
- Padded Vinyl Ceiling
- Towel Bars on Bathroom Door
- Carpeting and Pad in Living Area, Hallway and Bedroom
- Knife Holder (Incorporated into Galley Countertop)
- Silverware Tray
- Hardwood Slide-Out House Fascia Trim and Accents
- Hardwood Wardrobe Header
- Beveled, V-Grooved Decor Mirror with Wood Trim
- Armstrong Interlocking Laminate Flooring in Galley, Bathroom and Entry

OPTIONS

- Decors: Abbey Road, Manor House, Brighton Blue, Seaspray
- Newport Cherry Cabinets
- Plank Flooring in Kitchen/Entry
- Designer Accessory Package
- Fireplace with Decorative Hardwood Frame

FURNITURE: FEATURES

- Bedroom Slide-Out with Chest of Drawers, and Large Window
- Single Pedestal Freestanding Dinette Table with 14" Drop Leaf, 18" Storage Area and 4 Chairs
- King Bed inside Bedroom Slide-Out
- Bedspread
- Hardwood Residential Style Headboard
- Easy Bed Sleeper Sofa with Two Bolsters
- Fabric Glider Recliner
- Magazine Table between Recliners
- High-Back Desk Chair (N/A: 36RLT)

OPTIONS

- Queen Bed with Nightstand ILO King Bed
- Ultraleather™ Glider Recliner
- Two OptimaLeather™ Euro-Chairs with Ottomans
- Hide-A-Bed Sleeper Sofa

ELECTRICAL SYSTEMS AND LIGHTS: FEATURES

- Electrical Management System (50 Amp, 12V with 55 Amp Converter)
- Utility Center by Entrance Door (S/O Switches, Holding Tank Capacity Levels and Security Light Switches)
- Two Exterior Security Lights – Individual Switches in Utility Center
- Fluorescent Ceiling Lights
- 12V Receptacle at Desk Location
- Hitch Light
- Trunk Light
- Center Blinking Light
- Decorative Dinette Light with Wall Switch
- Antique Brass Swivel Lights in Bedroom Slide-Out Overhead
- Antique Brass Swivel Lights in Kitchen Overhead (37SKQ)
- All Interior Lights Switched throughout Unit
- Accent Rope Lighting above Kitchen Overhead Cabinetry and/or Entry Closet (N/A: 36RLT)
- Decorative Wall Light with Swing Arm in Living Area
- Cosmetic Light in Bathroom
- Battery Disconnect Switch
- Cable TV, Telephone and Electrical Outlet Hook-Up in Basement Storage
- Telephone Jacks at Kitchen Table, Desk Area and Entertainment Center
- Wineguard® TV Antenna with Cable Box
- Cable TV/DSS/VCR-Ready with Video Control Box
- Dual Exterior Cable/Satellite Receptacle
- Flush-Mounted Halogen Lights above Rear Overhead Cabinets, above Chest of Drawers and Honeymoon Suite Doors in the Bedroom and Desk/Workstation
- Dimmer Controlled Halogen Lights in Main Living Area and Bedroom
- 12V Incandescent Ceiling Lights with Clear Lens

OPTIONS

- One 12V Deep Cycle Battery
- Two 12V Deep Cycle Batteries
- Solar Prep
- Generator Prep
- 5.5 kW Marquis Gold (LP) Onan® Generator

PLUMBING AND LP SYSTEMS: FEATURES

- Composite Kitchen and Lavatory Sink
- Antique Brass Single Lever Kitchen Faucet with Pullout Sprayer
- Demand Water System with SHURflo® Water Pump
- Composite Bathroom Sink with Antique Brass Single Handle Faucet
- Fiberglass One-Piece Radius Shower with Obscure Glass Door
- Water Heater Bypass Kit
- High-Profile Toilet with China Bowl
- No-Fuss Flush Holding Tank Rinsing System
- 10 Gallon LP Gas/Electric Water Heater with Electronic Ignition (DSI)
- Lighted Water Management System with Drain, Spray-Port Water Sprayer with 15' Polyurethane Hose, Outside Shower with Hot and Cold, Soap Dispenser, Paper Towel Holder
- Antique Brass Shower Hose and Head
- Two 40 Lb. LP Tanks with Automatic Changeover and Cover
- Pump Valve for Water Fill
- Zurn Water Lines
- Water Heater Switch inside Unit in the Kitchen

OPTIONS

- Water Filter System in Kitchen

HEATING, VENTS AND AIR CONDITIONING: FEATURES

- 40M BTU Hydroflame Electronic Ignition Furnace
- One Carrier Programmable 15,000 BTU High-Capacity Rooftop Air Conditioner with Dehumidifier and Remote Control
- In-Floor Ducted Heating System
- Ceiling Fan with Antique Brass Housing
- Wire Prep and Ducting for Second Air Conditioner
- Manual Roof Vent in Bedroom
- Attic Fan with Thermal and Rain Sensor with 2-Way Switch in Living Room
- Louvered (Wood) Door Furnace Air Return Grill
- 12V Roof Vent in Bathroom in Toilet Area
- One Carrier Programmable 15.0 High-Capacity Heat Pump Rooftop Air Conditioner ILO 13,500 BTU with Remote Control
- Second Carrier 15.0 High-Capacity Heat Pump Air Conditioner with Remote Control
- 12V Roof Vents
- Attic Fan with Thermal and Rain Sensor with 2-Way Switch – Bedroom (Except Bath 1-Way Switch)

OPTIONS

- Second Carrier Programmable 13,500 BTU Rooftop Air Conditioner with Remote ILO Vent

WINDOWS, DOORS AND AWNINGS: FEATURES

- Tinted Radius Windows
- Window in Bathroom
- Tinted Skylight in Bathroom
- Patio Awning with Uniguard™ Cover
- Swing-Out Entry Door Handle
- 30" Radius Main Entrance Door with Solid Wood Trim Casing and Anti-Skid Steps
- Electric Patio Awning with Uniguard™ Weather Shield
- Slide-Out Cover Available for Each Slide-Out
- Slide-Out Awning Available for Each Slide-Out
- Dual Pane Windows with Dark Tint
- Bay Window at Dinette (Not a Dual Pane Window)

OPTIONS**WINDOW TREATMENTS: FEATURES**

- Pleated Day/Blackout Shades Color-Coordinated in Living Area and Bedroom
- Padded Valances and Lambrequins in Living Room
- Mini Blinds and Valance in Kitchen and Bedroom
- Padded Valances and Lambrequins

SAFETY FEATURES: FEATURES

- Fire Extinguisher
- Deadbolt Lock(s) on Entrance Door(s)
- 120V GFI Protected Outlets (Kitchen, Bath, Exterior)
- Breakaway Switch
- LP Gas Detector
- Smoke Detector
- Egress Window(s)
- Safety Glass

	FIFTH WHEEL					TRAVEL TRAILER	
Weights (Lbs.)*	35CKT	35SKT	36RLT	37RLQ	37SKQ	32FKD	34SKD
Gross Vehicle Weight Rating	16,950	16,950	16,950	16,950	16,950	11,500	11,500
Hitch Weight	2,580	2,500	2,770	2,520	2,760	1,120	1,270
Axle(s) Weight	7,000	7,000	7,000	7,000	7,000	6,000	6,000
Unloaded Vehicle Weight	12,920	12,540	12,930	13,550	13,470	9,130	9,170
Net Carrying Capacity (NCC)	4,030	4,410	4,020	3,400	3,480	2,370	2,330
Tire Size	16"	16"	16"	16"	16"	16"	16"
Tire Load Range	G HT	G HT	G HT	G HT	G HT	D	D
Measurements							
Overall Length	37' 6"	37' 6"	38'	39'	39'	33' 10"	35' 7"
Overall Height (Including A/C)	156"	156"	158"	156"	156"	135"	135"
Exterior Width	98"	98"	98"	98"	98"	98"	98"
Awning Length	21'	16'	16'	21'	17'	21'	20'
Tank Capacities**							
Water Heater	10	10	10	10	10	6	6
Gray Tank	50/50	50/50	50/50	50/50	50/50	40/40	40/40
Black Tank	50	50	50	50	50	40	40
Fresh Tank	70	70	70	70	70	50	50
LP Tank***	40 (2)	40 (2)	40 (2)	40 (2)	40 (2)	30 (2)	30 (2)

* Weights may vary by options.

** Variances in the fabrication and installation of the tanks may cause the actual "usable capacity" to be greater or less than the capacities designated above.

*** Actual filled LP capacity is 80% of listing due to safety shut-off required on tank.

Due to the large variety of options and floorplan arrangements available to our customers, actual weights for each unit can differ significantly. Holiday Rambler provides a weight sticker on each unit we produce which includes that unit's tank capacities and approximate weight. Consult your local Holiday Rambler dealer for unit availability and further information.

The information printed in this brochure reflects product design, fabrication, and component parts at the date of printing. The manufacturer reserves the right, at any time, to make changes in product design or material or component specifications as its sole option, without notice. This includes the substitution of components of a different brand or trade name, which will result in comparable performance. All information printed in this brochure is subject to change after the date of printing. Some features shown or mentioned in this brochure are optional and may only be available in selected floorplans. Photographs may show props or decorations that are not standard equipment on Holiday Rambler models. Holiday Rambler, the HR logo and its design, are registered trademarks. All other products and company names are trademarks and/or registered trademarks of their respective holders.

While the color of the towable's exterior and the interior fabrics depicted in this sales brochure are fair and reasonable depictions, the colors depicted may not be an exact match of the actual colors because of the variances in photo-processing and variances caused by inserting the photographs within the sales brochure. Due to product improvements, changes during the model year and/or transcription errors that may occur, information represented within this brochure may not be accurate at the time of your purchase. If certain information is significant to your purchasing decision, please confirm the information with your dealer prior to submitting your order.

The actual overall length of the recreational vehicle may differ from that indicated in the brochure due to variances in the manufacturing process and/or installed components. The actual length may be greater or less than that indicated.

Component part and appliance manufacturers issue limited warranties covering those portions of the recreational vehicle not covered by the Limited Warranties issued by Monaco Coach Corporation. To learn which specific component parts and appliances are excluded from the Limited Warranties issued by Monaco Coach Corporation, please contact your selling dealership or Monaco Coach Corporation directly, or review the warranty packet inside the recreational vehicle.

THE HOLIDAY RAMBLER ADVANTAGE.

The Advantage Package combines a series of features that ensure you get the most out of your Presidential.

- 5 Year Structural Warranty
- Z-Frame Construction (FW only)
- Alumaframe® Superstructure
- Alaskan Package (enclosed and heated underbelly, heated alcove storage area, insulated bathroom floor, 10-layer roof and 6-layer sidewall)
- Lighted Power Jack (TT only)
- Steel Framed Floor
- Two 40 Lb. LP Bottles (FW only)
- Recessed Spare Tire Carrier
- King Bed (FW only)
- 15,000 BTU A/C with Dehumidifier and Remote Control (FW only)
- Independent Front Power Landing Jacks (FW only)
- Microwave with Touch Control (TT only)
- Solid Hardwood Slide-Out Fascia (TT)

HOLIDAYRAMBLER.COM

Log on to our website anytime, night or day. It's your link to everything Holiday Rambler, including product news and updates, dealer and service center info and much more.





BODY CONSTRUCTION: FEATURES

- Alumaflex® Superstructure
- I-Beam Frame
- Vinyl Exterior Graphics
- No Front Stoneguard/Awning (34SKD)
- Lighted Front Power Jack
- Wrap Storage Doors - Two 32" Doors
- Smooth .040 Aluminum Exterior Walls
- Front and Rear Molded Fiberglass Caps
- Molded Fiberglass LP Bottle Cover
- Molded Fiberglass Battery Box Cover
- 3/8" Foam Core, Thermal Barrier Laminated Sidewall Structure
- 1-1/2" Steel Framed Sub-Floor
- Laminated OSB Flooring

- Enclosed and Heated Underbelly
- Color-Coordinated Radius Wraps
- Frame-Mounted Entry Step
- Aluminum Roof Structure with Double I-Beam Roof Rafter 16" On-Center
- BriteTek™ Exterior Roof Material
- 10-Layer Roof and 6-Layer Sidewall Construction
- Flat Floor Slide-Out in Main Living Area
- 2-5/16" Ball Coupler
- Storage under Master Bed
- Outside Storage in Wardrobe Area (34SKD)
- 6,000 Lb. Sealed Bearing Tandem Axles with Electric Brakes and Shock Absorbers
- Radial Tires

- Stylized 16" Sport Wheels with Trim Ring and Chrome Center Hub
- Spare Tire with Sport Wheel with Carrier under Frame Recessed into Underbelly
- Interior Height 7'
- Main Slide-Out Room Height 6'-1"

OPTIONS

- Aluminum Rims (4 Wheels)
- Rear Ladder
- Stabilizer Jacks
- Equa-Flex by Trailair®
- Trailair® Center Point Suspension
- High-Gloss Gel Coat Fiberglass Sidewalls

APPLIANCES: FEATURES

- 8 Cu. Ft. Refrigerator
- Wedgewood High-Output 3-Burner Range with Oven
- Bi-Fold Range Cover (Black)
- Systems Monitor Panel on Range Hood with 12V Fan
- Linear Digital AM/FM with CD Player 12V Stereo with 6 Speakers and Amp
- Microwave with Touch Control

OPTIONS

- 8 Cu. Ft. 2-Way Refrigerator with Ice Maker
- 10 Cu. Ft. 2-Way Refrigerator without Ice Maker
- 10 Cu. Ft. 2-Way Refrigerator with Ice Maker
- Three-Burner Cooktop without Oven
- Convection Microwave
- 24" Color TV with Remote Control in Living Area - Requires TV Swivel Base (32FKD)
- 20" Color TV with Remote Control in Living Area - Requires TV Swivel Base (34SKD)
- 20" Color TV with Remote Control in Bedroom

- TV Swivel Base
- Home-Style Theater with Surround Sound and DVD Player
- Exterior Radio with CD Player
- Built-In Central Vacuum, Deluxe Tools, 3-Package Replacement Bags
- Built-In Safe
- Washer/Dryer Prep (Requires 10 Gal. Water Heater and 50 Amp Service) (34SKD)
- Vented Front Load Washer/Dryer, Stacked (Requires Washer and Dryer Prep) (34SKD)

INTERIORS: FEATURES

- Vintage Oak Cabinetry
- Raised Panel Cabinet Doors
- Low-Friction Roller Drawer Guides
- Raised Panel Insert for the Refrigerator
- Solid Surface Kitchen Countertop with Composite Sink and Built-In Knife Holder
- Solid Surface Color-Matched Kitchen Sink Covers
- Solid Surface Bathroom Countertop with Composite Sink
- Kitchen Trash Can
- Toe Kicks at Base of Cabinets
- Roll-Out Pantry with Cabinet with Three Baskets
- Decorative Clock
- Tip-Out Tray by Sink
- Cedar-Lined Bedroom Wardrobe
- Kitchen Countertop Extension (N/A: 36RLT)

- TV Shelf in Bedroom
- Dressing Mirror
- Toilet Tissue Holders
- Towel Racks on Bathroom Door
- Smoked Glass in Entertainment Center (Doors Only)
- Carpeting and Pad in Living Area, Hallway and Bedroom
- Overhead Cabinets in Main Floor Slide-Out above Sofa
- Padded Vinyl Ceiling
- Hardwood Slide-Out House Fascia Trim and Accents
- Armstrong Interlocking Laminate Flooring in Galley and Entry
- Hardwood Door Header at Bathroom

- Linoleum in Bathroom
- Hamper (34SKD)
- Washer/Dryer Cabinet with Double Woodgrain Doors (34SKD)
- Decor Mirror (34SKD)
- Knife Holder
- Silverware Tray
- Mini Struts in Overhead Cabinet Doors
- Raised Panel Passage Doors

OPTIONS

- Decors: Abbey Road, Manor House, Brighton Blue, Seaspray
- Kitchen Countertop Extension (34SKD)
- Wood Choice: Newport Cherry
- Designer Accessory Package
- Plank Flooring in Kitchen/Entry

FURNITURE: FEATURES

- Queen Bed with Bedroom Slide-Out
- Wood Booth Dinette with Drawers and Arched Back Cushions (34SKD)
- Magazine Table between Recliners

- Bedspread
- Headboard
- Easy Bed Sleeper Sofa with Two Bolsters
- Fabric Glider Recliner

OPTIONS

- Hide-A-Bed Sofa
- OptimaLeather™ Euro-Chairs with Ottomans
- Single Pedestal Freestanding Dinette Table with 14" Drop Leaf, 18" Storage Area and 4 Chairs

ELECTRICAL SYSTEMS AND LIGHTS: FEATURES

- Electrical Management System – 30 Amp
- Porch Light
- 120V Exterior Receptacle
- Utility Service Light
- Wardrobe Lights
- Hitch Light
- Trunk Light
- Center Blinking Light
- Two Exterior Security Lights – Individual Switches in the Utility Center
- Fluorescent Ceiling Lights
- Decorative Dinette Light with Wall Switch
- Cosmetic Light in Bathroom
- Battery Disconnect Switch and Box
- 12V Incandescent Ceiling Lights with Clear Lens
- Decorative Wall Light with Swing Arm in Living Area
- Wider Wall Switches
- Decorative Lights in Living Room and Bedroom
- Cable TV/DSS/VCR-Ready with Video Control Box
- TV Antenna with Cable Box
- Telephone Jacks at Dinette Table, Desk Area and Entertainment Center
- Dual Exterior Cable Satellite Receptacle

OPTIONS

- One 12V Deep Cycle Battery
- Two 12V Deep Cycle Batteries
- Solar Prep
- 50 Amp Electrical Management Service (Required with Washer and Dryer Prep) (34SKD)

PLUMBING AND LP SYSTEMS: FEATURES

- Composite Kitchen and Lavatory Sink
- Antique Brass Single Lever Kitchen Faucet with Pull-Out Sprayer
- Demand Water System with SHURflo® Water Pump
- 6-Gallon LP Electric Water Heater with Electronic Ignition
- Fiberglass One-Piece Radius Shower with Obscure Glass Door
- Antique Brass Shower Hose and Head
- Water Management System with Bottom Drain, Includes Outside Shower
- Water Heater Bypass Kit
- No-Fuss Flush Holding Tank Rinsing System
- Pump Valve for Water Fill
- Two 30 Lb. LP Tanks with Automatic Changeover and Cover
- Zurn PEX Water Lines
- Water Heater Switch inside Unit

OPTIONS

- 6-Gallon LP Gas/Electric Water Heater with Electronic Ignition
- 10-Gallon LP Gas/Electric Water Heater with Electronic Ignition
- Water Filter System in Kitchen

HEATING, VENTS AND AIR CONDITIONING: FEATURES

- 35M BTU Hydroflame Electronic Ignition Furnace
- One Carrier 13,500 BTU Rooftop Air Conditioner with Dehumidifier and Remote Control
- In-Floor Ducted Heating System
- Manual Roof Vent
- Louvered Door Furnace Air Return Grill
- Insulated In-Roof Air Conditioning Duct Work
- Attic Fan with Thermal and Rain Sensor with 2-Way Switch (Except Bath 1-Way Switch)
- Carrier 15,000 BTU High-Capacity Heat Pump Rooftop Air Conditioner with Dehumidifier and Remote Control ILO 13,500 BTU with Remote Control
- 12V Roof Vents

OPTIONS

- One Carrier 15,000 BTU Rooftop Air Conditioner ILO 13,500 BTU with Dehumidifier and Remote Control

WINDOWS, DOORS AND AWNINGS: FEATURES

- Tinted Radius Windows
- Tinted Skylight in Bathroom
- Radius Main Entrance Door with Anti-Skid Steps
- Bedroom Entrance Door with Anti-Skid Steps
- Semi-Flush Travel Awning (Front) (32FKD)
- Patio Awning with Texturized Fabric and Alumagard Cover
- Slide-Out Awning on All Slide-Out Houses
- Swing-Out Entry Door Handle

OPTIONS

- Dual Pane Windows with Dark Tint
- Bay Window at Dinette (N/A in Dual Pane)

WINDOW TREATMENTS: FEATURES

- Living Room: Mini Blinds, Padded Valances and Lambrequins
- Kitchen: Mini Blinds and Valance
- Pleated Day/Blackout Shades Color-Coordinated in Living Area and Bedroom

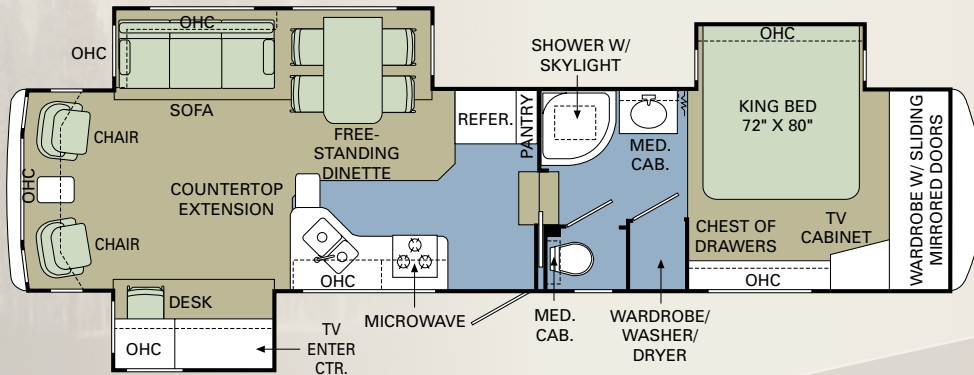
SAFETY: FEATURES

- Fire Extinguisher
- Deadbolt Lock(s) on Entrance Door(s)
- 120V GFI Protected Outlets (Kitchen, Bath, Exterior)
- Breakaway Switch
- Safety Chains
- Plug Guard for 12V Cord
- LP Gas Detector
- Smoke Detector
- Egress Window(s)
- Safety Glass

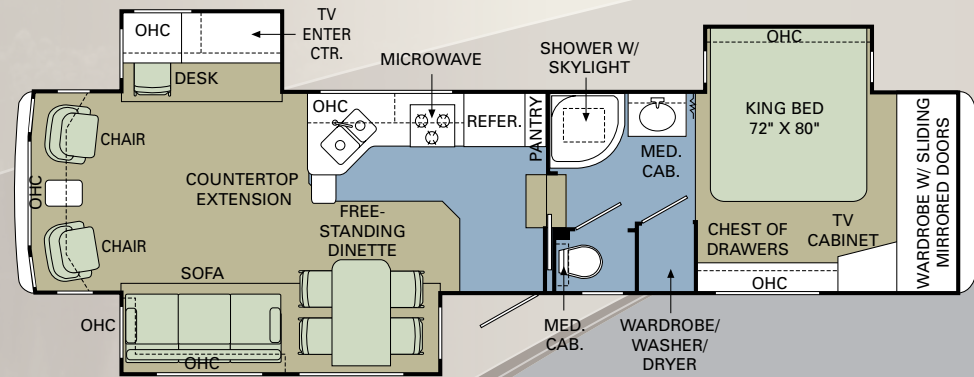
2007 FIFTH WHEEL FLOORPLANS ■ CARPET | ■ TILE

Whether you choose the fifth wheel suite or the travel trailer, the Presidential offers several floorplan options. Holiday Rambler's quality construction ensures that every floorplan is built to our exacting specifications for quality, safety and durability.

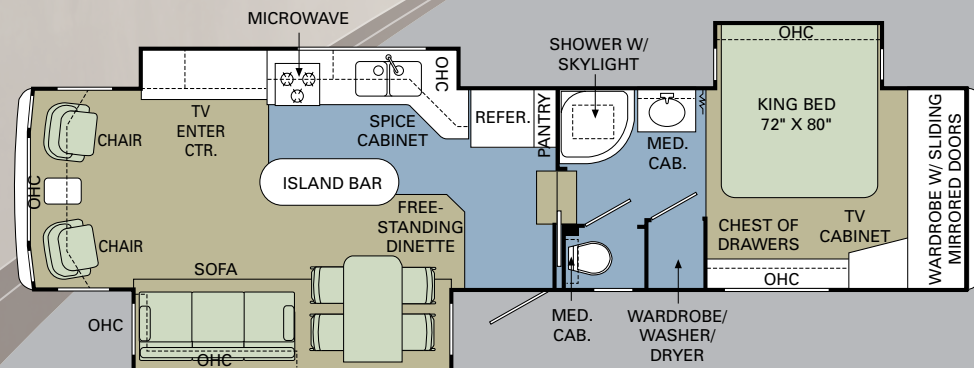
35CKT



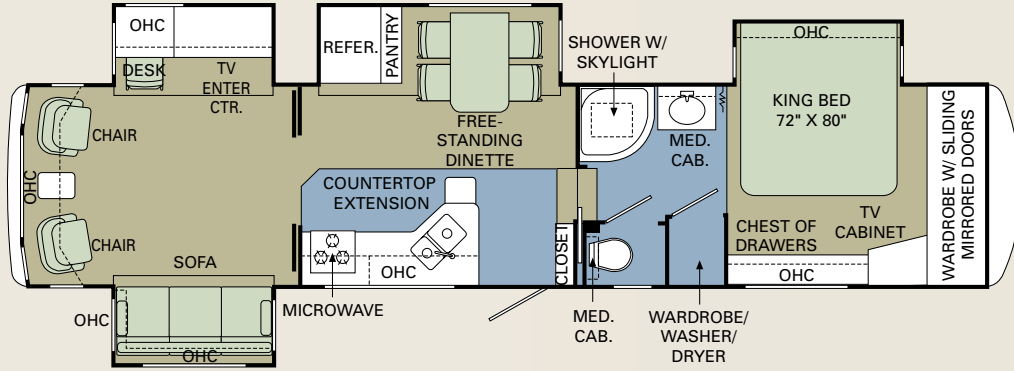
35SKT



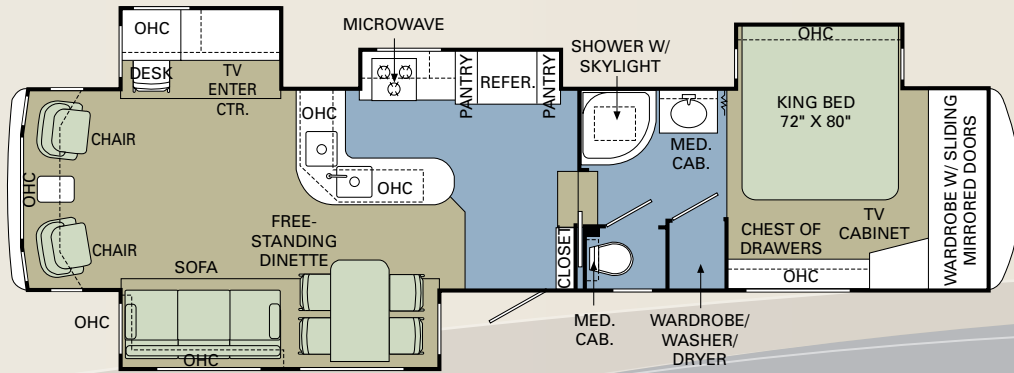
36RLT



37RLQ

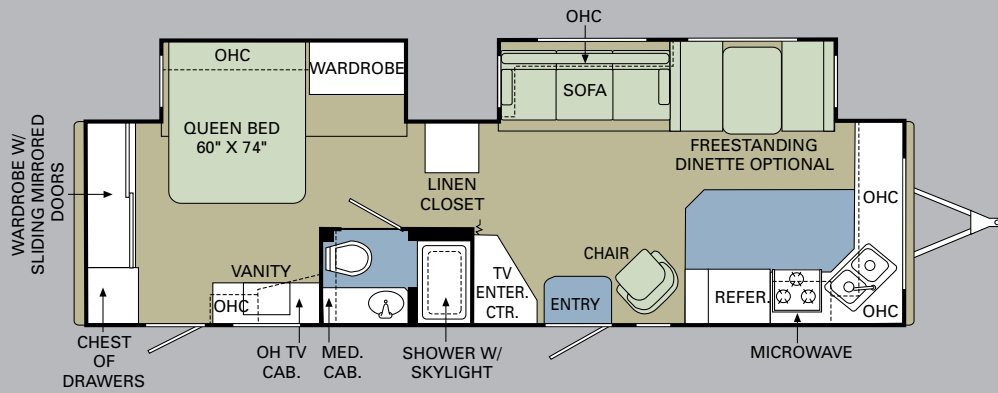


37SKQ

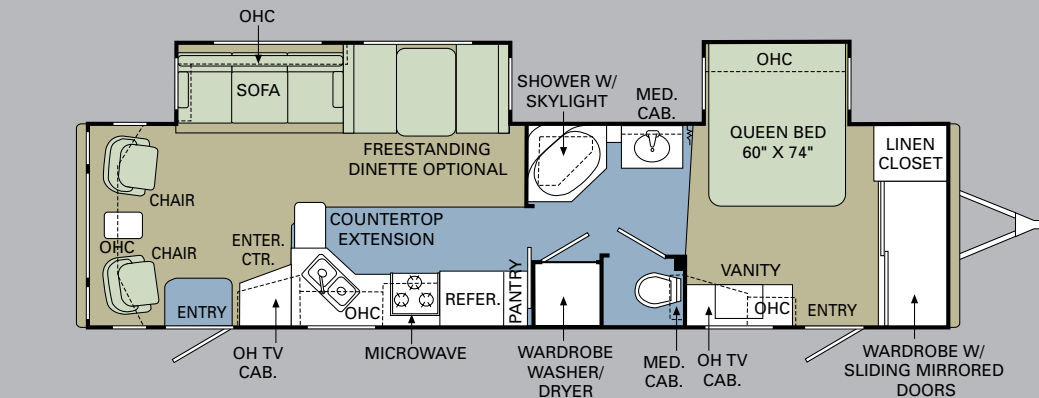


2007 TRAVEL TRAILER FLOORPLANS

32FKD



34SKD





2007 PRESIDENTIAL



THE POWER BEHIND THE NAME.

At Holiday Rambler, every one of our RVs shares something special – something that’s hard to describe, but easy to recognize. It’s that unique touch that makes Holiday Rambler stand apart. It’s our complete dedication to quality at every level – from the designers who create unique looks to the craftsmen who apply the finishing touches. It’s our unbeatable service, which gives you 24-hour availability, 365 days a year. It’s a commitment to safety and a tradition of innovation. And finally, it’s the best people in the business. The Holiday Rambler difference. It’s in every RV we make – including yours.



HOLIDAY RAMBLER®

This is Living®

DEALER:

606 Nelson’s Parkway Wakarusa, IN 46573
www.holidayrambler.com (800) 245-4778

WARRANTIES

12 MONTH
basic limited warranty

5 YEAR
limited warranty on aluminum or
steel frame structure of sidewall,
roof, front and rear cap

Applies to certain models. See owner’s
manual for complete details.



MONACO COACH CORPORATION

Monaco is traded on the New York Stock Exchange under the listing MNC.
© 2006, Monaco Coach Corporation 8/06 NPN:BROHPRE Litho in USA.

