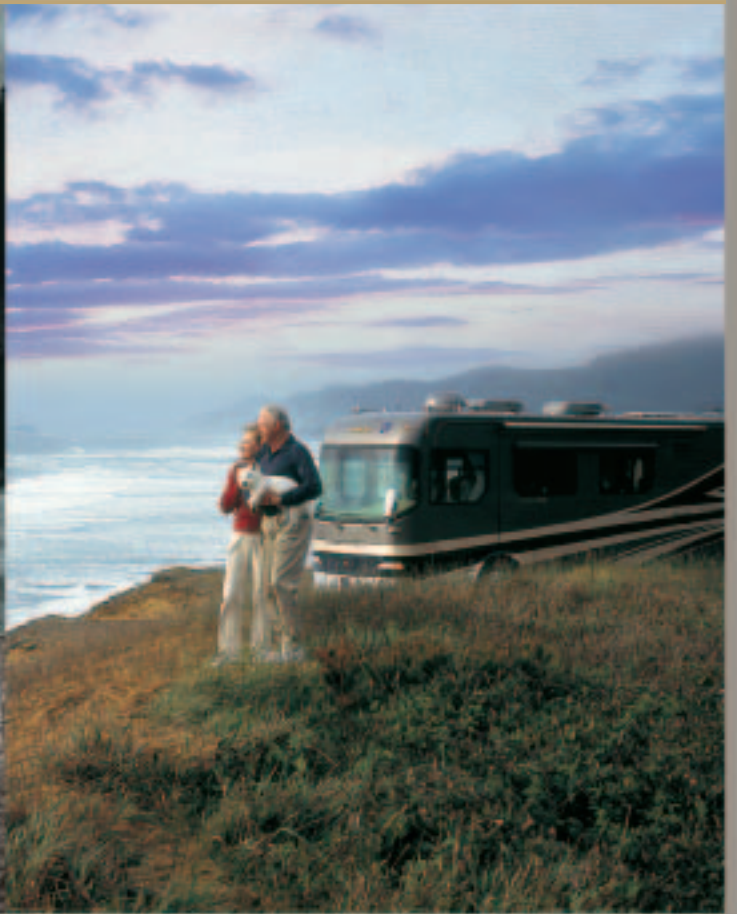


2005 | NAVIGATOR®



This is Living®

 HOLIDAY RAMBLER®





{ *This is Living*® }

Fifty-one years. It's a proud reminder of our many accomplishments. After all, we were there from the start of an industry, and innovation by innovation we've led the way toward creating a rich and wonderful RV lifestyle.

Maybe it's not until you own a Holiday Rambler that you can truly feel the strength of our heritage. You'll feel it in the peace of mind you'll have knowing your family's in the safest RV on the road. You'll feel it in the quality of your experiences, thanks to the hundreds of conveniences we've developed. And you'll feel it when you realize you're free to roam throughout North America with confidence, knowing our network of support is with you every mile of the way.



So join us as we look forward to a new model year. For 2005, we're celebrating an exciting new lineup, full of more groundbreaking products and high-tech advances than ever.



2005 NAVIGATOR

THE FLAGSHIP OF EXCELLENCE.

You could say it takes quite a heritage to design and engineer a motorcoach like the 2005 Navigator. It's a heritage you can rely on when you're making one of the biggest investments of your life. And one you'll become a part of as you and your family enjoy the travels of a lifetime.



Holiday Rambler®

1954 ~ 2005



NAPA ONYX II DECOR WITH NATURAL CHERRY WOOD

43PBQ



{ ALL THE INGREDIENTS FOR A DREAM COME TRUE. }

Step inside the 2005 Navigator, and simply imagine the possibilities. Look around at a world where every detail is designed to give you the ultimate life on the road. It all starts with unbeatable craftsmanship — like that of our beautiful cabinetry with solid wood doors and hidden hinges. And you'll marvel at the many thoughtful conveniences, including the legless side-slide dinette table with two stylish chairs and two folding chairs. In the kitchen, you're greeted by a stunning new high gloss solid surface countertop with integrated sink as well as a new decorative glass splash guard. You'll also find more roomy workspace and storage than ever before, with countertop extensions on select floorplans and a new slide-out pantry with Corian® top on the 43PBQ, 45PBT and 45PBQ. Even the coach's floors are distinctive — with exquisite sculptured carpet in the living area and decorative ceramic tile in the kitchen, bathroom and entryway.

{ A POWERFUL FIRST IMPRESSION. }

The 2005 Navigator is the picture of power and elegance. Who can resist the appeal of 500 horsepower? And this year, you have two exciting options: a Cummins® ISX-525 or a Series 60 Detroit Diesel 515 — both with Allison® 4000 MH 6-Speed World Transmission and electronic shifter. The coach's sleek, contemporary exterior is the perfect reflection of its state-of-the-art performance. Deluxe full-body paint provides a beautiful, durable finish, and a few of the impressive details include a one-piece windshield, halogen fog lamps, recessed docking lights, and convenient new side-hinged baggage doors.



NAPA ONYX II DECOR WITH STAINED CHERRY WOOD

45PBQ



{ THE TOP-OF-THE-LINE JUST GOT TALLER. }

As you look to the front of the coach, the open spaciousness is no illusion. That's because this year we've raised the coach's interior height to 82", which is further enhanced by the recessed A-look and the padded vinyl ceiling. From here, you can also appreciate the luxurious comfort of the leather 6-way power cockpit seats with electric lumbar support. The pilot's seat features an electric sliding seat cushion and memory capabilities, while the co-pilot's has a power footrest. The Navigator's many state-of-the-art entertainment highlights include a new home theater system with DVD/VCR/CD player and a new universal remote system. Exciting options this year include a 37" LCD TV mounted in the ceiling, as well as a fully automatic digital satellite system and an In-Motion digital satellite system.



{ JUST LIKE HOME. }

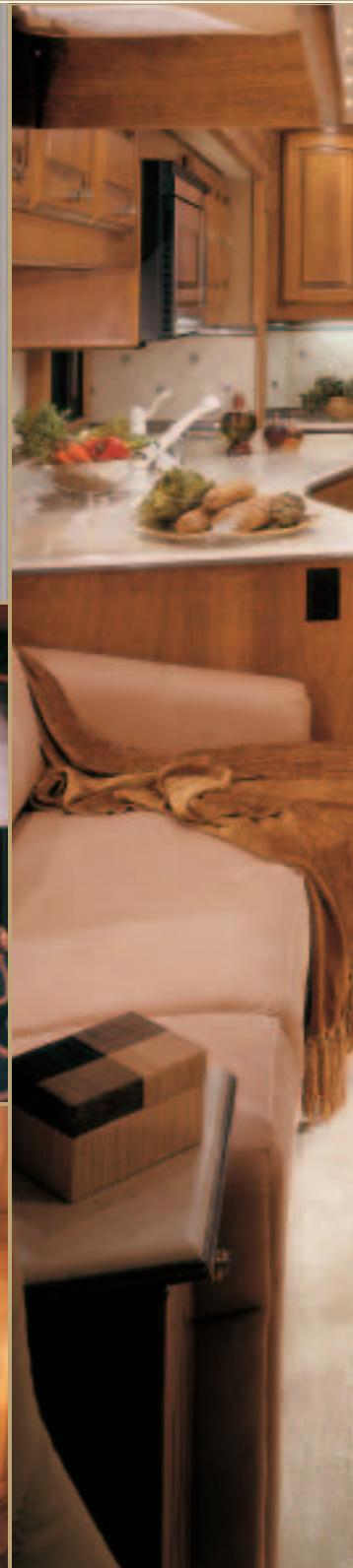
An impressive option this year is a residential refrigerator (N/A on 40PBQ and 43PBQ), like the one shown here (requires four additional batteries option). It's just another way the Navigator lets you take all the conveniences of home with you wherever you go.

{ THE ART OF THE FINISHING TOUCH. }

Take a closer look at the interior, and you'll get the full effect of the many stylish finishing touches, including crown molding, intricately carved hardwood fascia, decorative slide-out fascia and Corian® window sills. Another important detail is the lighting, notably the decorative living room and dinette fixtures, the recessed halogens in the overhead cabinets, and the rope lighting in the window valances and toe kicks.

On the right is a close-up of the window treatments. Day/night pleated shades come standard in the living area, while the bedroom features the increased room darkening of blackout shades. Powered blinds in the living area make an excellent option, saving you both time and effort.

The bedroom floorplans feature a dresser with Corian® top opposite the bed. Or, if you prefer, you may choose this new optional window seat with three drawers, available on select models.





GRAND TETON DECOR WITH STAINED CHERRY WOOD

45PBQ



NAPA ONYX II DECOR WITH STAINED CHERRY WOOD

45PBQ



{ WHERE ELEGANCE MEETS EFFICIENCY. }

Welcome to the Navigator's private quarters, where impeccable styling combines with functional storage spaces. The 43PBQ, shown here, features the convenience of a second vanity in the bedroom. Other highlights include nightstands with solid surface countertops, a built-in clothing hamper and an oversized rear wardrobe with etched mirrors. You'll also enjoy the 20" flat screen TV and the new combo DVD/VCR player. A queen bed comes standard, and all floorplans offer an optional king bed. An exciting new option this year is an adjustable air mattress with digital remote control, which is available in either queen or king size.



{ LIKE YOU, ANYTHING BUT ORDINARY. }

The coach's distinctive luxury carries into the bathroom with a sleek, contemporary high gloss countertop, integrated sink, Corian® shower with gel coat base, and new Corian® shower caddy. The medicine cabinet includes Plexiglas® shelf strips to hold contents upright on the shelves, while vanity mirrors and cosmetic lights brighten the room and make it more functional.

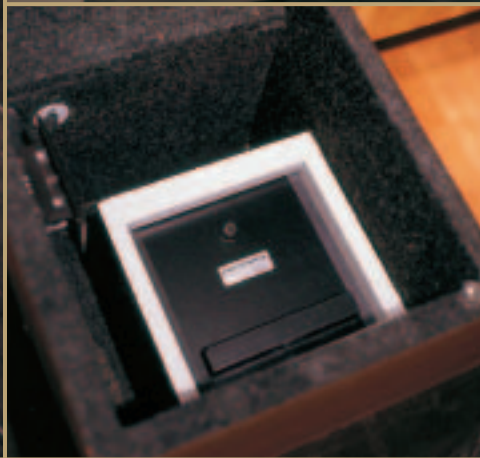




{ TAKE THE REINS OF 500 HORSEPOWER. }

Slip behind the wheel of the Navigator, and you take control of more high-tech luxury than you'll find anywhere. Before you is the automotive-style dash with vermillion burl instrumentation panel, black gauges and chrome bezels. The lighted VIP Smartwheel® puts many important switches right at your fingertips, and close at hand is the monitor for the color rear vision system with audio. The Aladdin™ video coach system with integrated compass allows you to monitor many vital coach functions, including engine temperature, tank levels, electrical status, fuel consumption, trip information and much more.

This year, the coach offers a full range of optional state-of-the-art features including a GPS navigational system and the SEE-Vision coach monitoring system — giving you a side view of the coach's exterior from both the cockpit and bedroom monitors. The OnStar® mobile assistance system brings you live, personalized service 24/7/365, all at the touch of a button, and Sirius satellite radio offers unmatched reception wherever you travel (both require subscription).



{ IT'S ALL ABOUT CREATING
A SUPERIOR EXPERIENCE. }

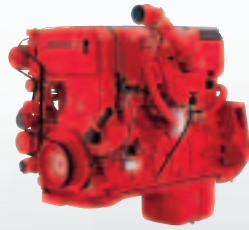
Year after year, we develop more ways to make life on the road more enjoyable for you and your family. Hook-ups are easier than ever with the optional power reels for both the cord and water hose. An optional security safe gives you extra peace of mind when you're away from the coach. And for maximum safety on the road, you'll appreciate the triple-head power controlled heated chrome exterior mirrors with turn indicator lights, as well as roof-mounted dual trumpet air horns.





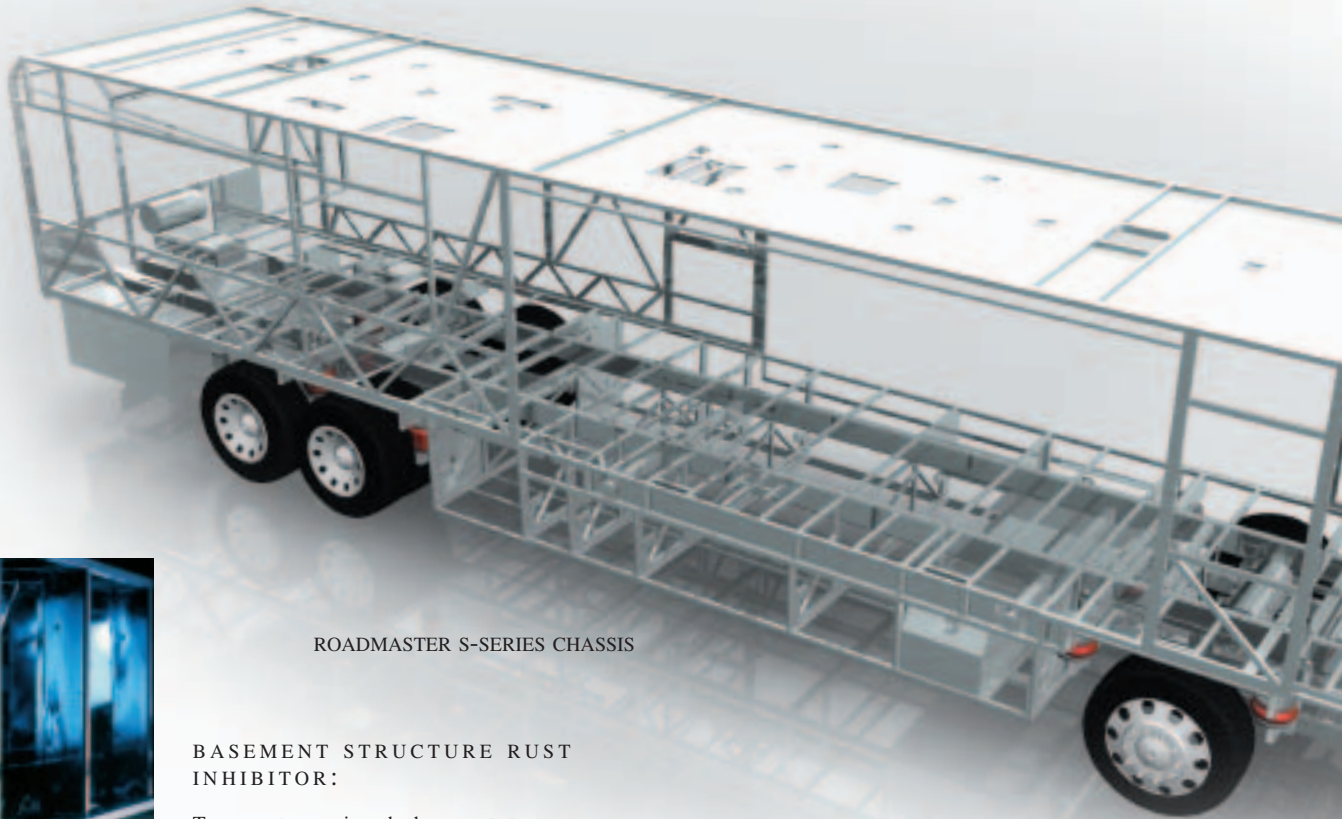
CUMMINS® ISM-II 500 ELECTRONIC ENGINE:

The 2005 Navigator gives you more powerful engine options than ever before. The standard offering is the Cummins® ISM-II 500 with 1,550 lbs./ft. torque. Or you may choose the even mightier ISX-525 with 1,650 lbs./ft. torque, shown here. In addition, you have the option of a Series 60 Detroit Diesel 515 HP engine, noted for its superior climbing power with less weight and reduced vibration. All three engines are paired with an Allison® 4000 MH 6-Speed World Transmission.



EATON VORAD®))

An important safety option is the VORAD® collision avoidance system. This sophisticated system of sensors, software and radar tracks potential hazards, even when the road curves. High frequency radar signals transmitted from the front and side of your coach alert you to danger with a combination of warning lights and audible tones. In addition, the available SmartCruise® system automatically adjusts your speed to match that of a slower moving vehicle ahead of you, to ensure that you maintain a safe following distance at all times.



ROADMASTER S-SERIES CHASSIS



BASEMENT STRUCTURE RUST INHIBITOR:

To prevent corrosion, the basement storage area is constructed with pre-primed steel with rust inhibiting paint.

ROOF CONSTRUCTION: (top to bottom)

- One-piece 1/4" thick fiberglass roof, crowned for water run-off and seamlessly joined with front and rear end caps; non-skid walkways on outboard areas for added convenience
- Vapor barrier
- 3 1/2" tapered bead foam supports the crowned roof; the center tunnel houses wiring and air conditioner ducts
- 1/4" marine grade plywood sheeting
- Tubular steel framework

- Foam insulation
- Luaun and vinyl paneling are Vac-U-Bonded
- Sound-absorbing, easy-to-clean padded vinyl interior headliner

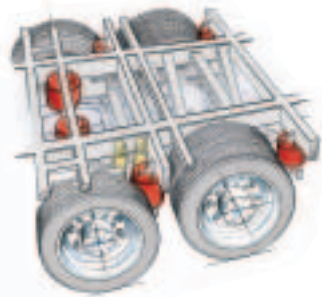


SIDEWALL CONSTRUCTION: (left to right)

- Gel coat fiberglass outer wall
- Luaun paneling
- R 7.5 closed cel foam seals every nook and crevice
- Heavy-gauge tubular steel and steel plate backers for cabinet attachment
- Luaun paneling; walls are Vac-U-Bonded together
- Decorative vinyl wall coverings

AIR BAGS AND SHOCKS:

Cushion Air-Glide Platinum suspension system positions ten Bilstein® shocks and ten air bags, eight of which are outboard mounted with auto-leveling for greater stability, a smoother ride and the best handling in its class.



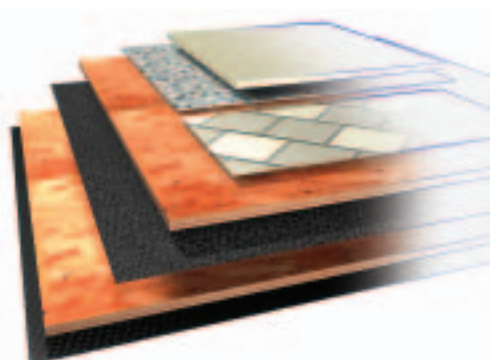
ENGINE MOUNTING:

The three-point engine mounting system lowers the coach's center of gravity and reduces the amount of vibration that reaches the coach. The mounting also makes the engine easier to service by allowing the engine to be easily lowered through the bottom of the coach.

Roadmaster Chassis

The Roadmaster S-Series chassis is custom-built for each model and floorplan of the Navigator to give you the best ride and handling in the industry. Here are some of its many highlights.

- Cummins® ISM-II 500 HP engine provides 1,550 lbs./ft. of torque.
- Optional Cummins® ISX-525 HP engine adds power and increases torque to 1,650 lbs./ft.
- Optional Series 60 Detroit Diesel 515 HP engine offers superior climbing power with less weight and reduced vibration.
- Allison® 4000 MH 6-speed transmission for smooth shifting; our exclusive use of synthetic transmission fluid allows for up to three-year maintenance intervals.
- 10,000 lb. hitch receiver offers powerful towing capacity.
- Unique six-degree rear axle tilt perfectly aligns the engine, transmission and differential, minimizing stress on the drive-train and reducing noise in the coach.
- Two-stage Jake brake system assures you of safely traveling steep grades while 6-wheel anti-lock brakes with disc brakes in front help you maintain control in severe road conditions.
- Automatic Traction Control (ATC) eliminates wheel slippage in slick conditions and heightens control.
- P295/80R Goodyear steel belted all-season tires ensure a safe and quiet ride.
- The semi-monocoque design, with trussed superstructure, distributes stress evenly throughout the entire chassis and adds strength to sidewalls and bays.
- Full-length frame rails fabricated from 3" by 8" by 1/4" 60,000 PSI structural steel; rails are spaced 44" on center for a wider stance and unmatched strength.
- The power steering box allows for a 50-degree front wheel turn angle in both directions for better maneuverability and returns the steering wheel back to its center position to eliminate driver fatigue.
- All chassis are equipped with steel cage construction and steel firewall for added safety.
- Tag axle lifts for added maneuverability in tight spots.



FLOOR CONSTRUCTION:

- (top to bottom)
- 1/2" plywood and tile, or 1/2" carpet pad and carpeting
 - 5/8" Oriented Strand Board (OSB)
 - Decibel paper
 - 5/8" Oriented Strand Board (OSB)
 - Waterproof Darco underbelly

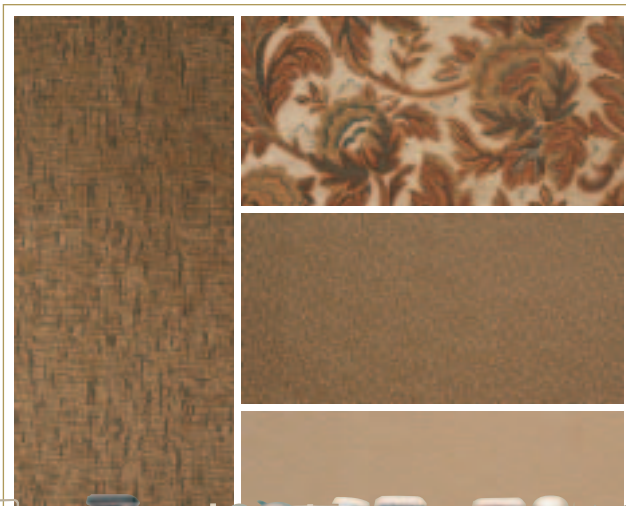


{ CELEBRATING THE FREEDOM OF CHOICE. }

At Holiday Rambler, we're dedicated to giving you more ways to create the coach of your dreams. That's why the Navigator features a wide selection of exciting double, triple and quad slide-out floorplans, with numerous furniture options to fit your lifestyle. In addition, our designers have created exquisite color and fabric combinations to give you the most beautiful interiors you'll find anywhere. Add to that the woodwork of your choice, and you'll have a luxury motorcoach you can truly call home.

A	B
	C
	D

- A Sofa
- B Chair
- C Bedspread
- D Carpet



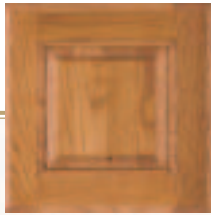
GRAND TETON



MOJAVE MOON



Natural Oak



Stained Oak



Natural Cherry



Stained Cherry



Natural Maple



Mahogany Stained Cherry



**BETTER
STAIN
PROTECTION**

Manufactured in, not added on. For added protection against stains, Dupont Teflon® soil repellent is applied to virtually all upholstery fabric during the finishing process for superior coverage.*

*Brand and application of upholstery fabric protection may vary depending on date recreational vehicle was manufactured.

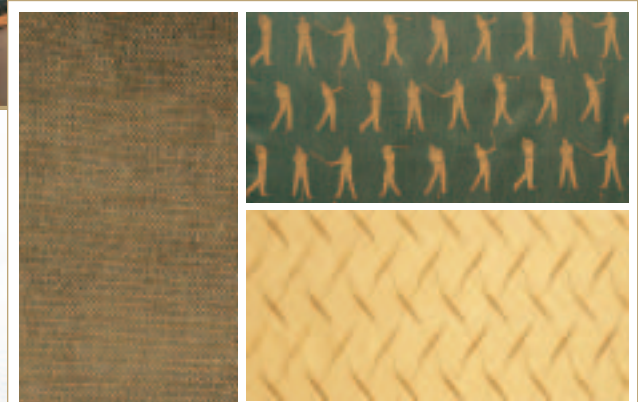
SEA MIST

NAPA ONYX II

HOLIDAY RAMBLER:
THE MOTORHOME OF CHOICE FOR PGA TOUR PROFESSIONALS.



Introducing the 2005 PGA TOUR Edition. This new special edition Navigator model features a unique paint color and PGA TOUR edition logos on the exterior. Inside the coach, you'll find many distinctive touches — including one-of-a-kind fabrics, a unique slide-out fascia medallion and sculptured carpet design, as well as a PGA TOUR logo overlaid on the glass shower door. So this year, see for yourself why PGA TOUR professionals who own motorhomes choose Holiday Rambler.



PGA EDITION

A	B
	C
	D

- A Sofa
- B Chair
- C Bedspread
- D Carpet



{ IT'S ALL ABOUT BUILDING A LASTING RELATIONSHIP. }



WELCOME TO THE FAMILY ADVANTAGE.

What is the Family Advantage? It's all the ways we put the strength of our family to work for yours. It's the unmatched level of teamwork, expertise and combined experience of all our companies. It's our industry-leading Roadmaster chassis and our remarkable White Glove factory inspection program.

It's our ability to respond rapidly to our owner's needs, with new features and technologies. And it's our commitment to value and to giving you more RV for your money — whether it's your family's first travel trailer or the motorcoach of your dreams.

The most important aspect of the Family Advantage is being there when you need us. That's why our 350 qualified service centers span North America. And it's why, no matter where you are, there's someone standing by to talk with you 24 hours a day — to help you get the most from your time on the road.

In short, when you purchase an RV from Monaco Coach Corporation, you get a wider array of benefits than any other manufacturer can offer. To see it all for yourself, call 1-800-634-0855 or 1-800-650-7337. We'd love to meet you Monday through Friday for a tour of one of our state-of-the-art production facilities in Oregon or Indiana.



350 | SERVICE FACILITIES
NATIONWIDE AND GROWING.

WARRANTIES

12 MONTH/24,000 MILE
basic limited warranty

5 YEAR/50,000 MILE
limited warranty on aluminum or steel frame structure
of sidewall, roof, front and rear cap

3 YEAR/36,000 MILE
limited warranty on Roadmaster chassis

Applies to certain models. See owner's manual for complete details.

**BODY CONSTRUCTION****STANDARD FEATURES**

- Heavy Duty Steel Superstructure
- Steel Cage Cockpit Construction
- Seamless One-Piece Molded Crowned Fiberglass Roof
- All-Season Foam Insulated Roof
- Laminated Gel Coat Fiberglass Sidewalls
- Five-Layer Flooring with Two Layers of 5/8" Dyna-Span Flooring
- One-Piece Front and Rear Molded Fiberglass Caps with Recess in Front Cap for Mirror Bases and Integrated Air and Turbo Intake in Rear Cap
- Polished Stainless Steel Front Bumper
- Deluxe Full-Body Paint
- One-Piece Front Windshield
- Triple Head Power Controlled Heated Chrome Exterior Mirrors with Turn Indicator Lights
- Halogen Fog Lamps
- Recessed Side Docking Lights
- Roof-Mounted Dual Trumpet Air Horns
- One-Piece Generator Access Door
- Engine Access Door with Pantographic Hinges and Struts
- Entry Step Storage
- Insulated Aluminum Side-Hinged Baggage Doors with Power Locks and Chrome Handles
- Ozite Lined Pass-Through Storage Compartments
- Steel Framed Floor
- Interlocking Aluminum Framed Slide-Out Houses
- Roadside Side-Hinged Baggage Doors
- Curbside Side-Hinged Baggage Doors
- Curbside Pantographic Baggage Doors with Electric Locks (40PBD Only)
- Rear Ladder
- Wheel Mud Flaps
- Holiday Rambler Full-Length Mud Flap with Polished Stainless Steel Logo

OPTIONS

- 3M® Film Front Mask
- Slide-Out Storage Tray (One Side)
- Slide-Out Storage Tray (Complete Pass-Through)
- Electric Slide-Out Storage Tray (Complete Pass-Through)
- Exterior Sunscreens

COCKPIT**STANDARD FEATURES**

- Fiberglass Automotive Dash with Vermillion Burl Instrumentation Panel; Black Gauges with White Lettering and Chrome Bezels
- In-Dash AM/FM Stereo with Multi-Disc CD Player
- Color Rear Vision System
- Aladdin™ Video Coach System with On/Momentary Switch and Integrated Compass

- CB Radio with Antenna
- Recessed Slide-Out Dash Workstation
- Power Front Sunvisors
- Pilot and Co-Pilot Side Window Manual Sunscreens
- Taller Cockpit Overhead for Increased Storage
- Adjustable Brake and Accelerator Pedals
- Lighted VIP Smartwheel® with Controls for Windshield Wipers, ICC and Cruise Control
- Burlwood Steering Wheel
- Power Steering
- Pantographic Windshield Wipers
- Audible Turn Signals
- Cruise Control Light on Dash
- Low Coolant Warning Light and Buzzer
- 6-Way Power Pilot and Co-Pilot Seats with Electric Lumbar; Electric Sliding Seat Cushion and Memory Capabilities on Pilot Seat; Power Footrest on Co-Pilot Seat
- HR Monogram in Cockpit Seats
- Air-Activated Flush Mount Step Cover
- Two-Step Entrance Step
- Overhead Dash Ventilation System
- 12V and 110V Outlet for Laptop Computers
- Digital/Analog Cellular Phone Antenna Prep
- Carpet Driver and Passenger Floor Mats

OPTIONS

- Extra Wide Co-Pilot Seat with Power Footrest (Deletes Roadside Slide-Out Fascia Cabinet)
- Electric Privacy Drape 110V
- GPS Navigation System
- OnStar® Mobile Assistance (Requires Subscription)
- Sirius Satellite Radio System
- SEE-Vision Coach Monitoring System

APPLIANCES AND ACCESSORIES**STANDARD FEATURES**

- Four-Door Refrigerator with Ice Maker and Raised Panel Doors
- Recessed High-Output 2-Burner Cooktop with Flush Mount Covers
- Spacesaver Convection Microwave with Touch Control
- Manual TV Antenna with "Antenna Up" Light on Dash
- Prep for Satellite Receiver
- 32" LCD Cabinet Mounted in Front of Co-Pilot Seat with Separate Tuner
- 20" Flatscreen TV Bedroom
- Bedroom Stereo/CD/Clock Radio
- Home Theater System with DVD/VCR/CD Player
- Bedroom DVD/VCR Combo
- Universal Remote System

- Cable TV Hook-Up and Telephone Jacks
- Washer/Dryer Prep

OPTIONS

- 8 Cu. Ft. 2-Way Refrigerator with Ice Maker
- Residential Refrigerator (Requires Four Additional Batteries Option)
- AC/DC Exterior Pull-Out Freezer/Refrigerator 2.5 Cu. Ft.
- Combination Washer/Dryer
- 22" LCD Flatscreen TV Bedroom
- 37" LCD TV Mounted in Living Area Ceiling
- Fully Automatic Digital Satellite System
- In-Motion Digital Satellite System
- Exterior Entertainment Center with 20" Sharp LCD TV with IR Repeater, AM/FM/CD/DVD/MP3 Player, Two Sony 4" Speakers

INTERIOR
STANDARD FEATURES

- Stained or Natural Solid Oak Cabinetry
- Solid Wood Colonial Arch Raised Panel Doors on Upper Cabinets with Hidden Hinges
- Solid Wood Square Raised Panel Doors on Lower Cabinets with Hidden Hinges
- Hardwood Veneer Paneling
- Crown Molding Living Room and Bedroom
- Lined Cabinet Shelves
- Dinette Wall Cabinet with Solid Surface Top
- Built-In Storage Area for Kitchen Countertop Covers
- Slide-Out Fascia Cabinets with Solid Surface Top (One on Double Slide-Outs; Two on Front, Triple and Quad Slide-Outs)
- Dressers with Corian® Top across from Bed
- Clothing Hamper in Bedroom
- Low-Friction Roller Drawer Guides
- Padded Vinyl Ceiling with Recessed A-Look Living Room Ceiling
- Padded Vinyl Ceiling with Recessed A-Look Bedroom Ceiling
- High-Gloss Solid Surface Galley Countertop with Integrated Solid Surface Sink
- High-Gloss Solid Surface Bathroom Countertops with Integrated Solid Surface Sink
- Corian® Backsplash above Kitchen Countertop
- Glass Splash Guard at Living Room Side of Kitchen Countertop
- Slide-Out Pantry with Corian® Top at Forward End of Galley (Only 43PBQ, 45PBT, 45PBQ)
- Countertop Extension (N/A: 43PBQ, 45PBT, 45PBQ)
- Drawer below Washer/Dryer Cabinet for Detergent Storage
- Day/Night Pleated Shades in Living Area and Blackout Shades in Bedroom
- Mini Blinds in Kitchen and Bathroom
- Wallpaper Throughout

- Four-Compartment Drawer Organizer
- Sculptured Carpet in Living Area
- Ceramic Tile in Kitchen, Bath and Entry
- Oversized Rear Wardrobe Closet with Etched Mirrors
- Medicine Cabinet with Plexiglas® Shelf Strips
- Bathroom Vanity Mirrors
- Towel Bars in Bathroom
- Raised Panel Door for Private Bath
- Bedspread and Pillows
- Nightstands with Solid Surface Countertops
- Two Wood Drawers under Bed Base for Storage (Only 43PBQ, 45PBQ)
- Corian® Window Sills in Living Area
- Raised Panel Accent on Refrigerator Wall with Decorative Mirror above
- Decorative Hardwood Slide-Out Fascia
- Pocket Door with Recessed Mirror
- Adjustable Shelves in Kitchen Overhead Cabinets
- Slide-Out Storage Tray under Cooktop

OPTIONS

- Interior Decors: Sea Mist, Mojave Moon, Napa Onyx II, Grand Teton, PGA TOUR Edition
- Stained or Natural Cherry Cabinets, Natural Maple Cabinets, or Mahogany Stained Cherry
- Powered Blinds Living Area (N/A: Slide-Out Endwall Windows)
- Plank Flooring in Kitchen and Bath

FURNITURE
STANDARD FEATURES

- Legless Side-Slide Solid Surface Dinette Table with Two Freestanding Dinette Chairs and Two Folding Chairs
- Fabric Sleeper Sofa (Roadside)
- Leather Euro-Recliner with Ottoman (Curbside) (40PBD)
- Fabric J-Lounge (Curbside) (40PBQ, 43PBQ, 45PBT, 45PBQ)
- Bedroom Desk and Chair (43PBQ)
- Queen Mattress

OPTIONS

- King Bed
- Queen Air Mattress with Digital Remote
- King Air Mattress with Digital Remote
- Leather Lafer Recliner Chair with Built-In Footrest (Curbside) (1 - 40PBQ, 2 - 45PBT)
- Leather J-Lounge (Curbside)
- Leather Sleeper Sofa (Curbside)
- Leather Sleeper Sofa (Roadside)
- Leather J-Lounge (Roadside) (40PBQ, 43PBQ, 45PBQ)



- Window Seat with Three Drawers ILO Dresser with Corian® Top across from Bed (40PBQ, 43PBQ, 45PBQ)
- Wraparound Computer Table with Cable for Computer Display on TV (Requires Recliner)
- Fabric Booth Dinette
- Lighted Bar Cabinet (N/A: 40PBD)

ELECTRICAL SYSTEMS AND LIGHTS

STANDARD FEATURES

- 50 Amp 120V/240V Distribution Panel and Power Cord with Quick Disconnect
- Locking Battery Disconnect Switch inside Coach
- Onan® 10 kW QD Diesel Generator on Power Slide-Out Tray with Auxiliary Start Switch and Automatic Temperature Start
- Powder Coated Generator Exhaust Pipe
- 3,000 Watt Inverter with Remote Start
- Pilot and Co-Pilot Map Lights
- Decorative Lighting in Living Area and Dinette
- Cosmetic Vanity Lights in Bathroom
- Switches for Bedroom Decorative Lights on Both Sides of Bed
- Recessed Halogen Lighting under Living Room and Dinette Overhead
- Halogen Lighting in Ceiling Throughout
- Rope Lighting in Living Room and Bedroom Window Valances
- Rope Lighting under Kitchen and Bathroom Toe Kicks
- Lighted Utility Center
- Underhood Utility Light
- Courtesy Lighting in Stepwell and Bedroom
- 110V Outlet in Private Bath
- 110V Outlet in Bed Base
- 120V Receptacles in Outside Storage Compartment
- Porch Light
- Door Bell
- Lights in Outside Storage Compartments
- Front and Rear Electrical Run Boxes
- Four 6V Deep Cycle House Batteries
- Two 12V Deep Cycle Chassis Batteries
- Dual 12V Outlets in Dash
- Switch in Bedroom for Docking Lights

OPTIONS

- Solar Panel
- 50V Surge Protector
- Power Cord Reel
- Pure Sine Wave Inverter
- Four Additional 6V House Batteries

- All Electric Coach: 2 Trace Inverters, 5 AGM Batteries, 270 Amp Alternator with 300 Amp Isolator, Residential Refrigerator, Two-Burner Cooktop, Aqua-Hot® Heating System and 2 Solar Panels (N/A: 45PBQ)

PLUMBING AND LP SYSTEMS

STANDARD FEATURES

- Central Water Filtration System in Service Bay
- Manabloc Water System for Entire Coach
- 10 Gallon LP Gas/Electric Water Heater with Electronic Ignition
- Insulated Systems Compartment with Easy Access to Hook-Up
- Water Pump Switch in Galley, Service Bay, Private Bath with LED Light on Switch
- China Toilet
- Corian® Shower with Gel Coat Shower Base and Corian® Shower Caddy
- Shower Shut-Off Valve
- Gravity and Pressurized Water Fill
- No-Fuss Flush Black Holding Tank Rinsing System
- Outside Faucet with Hot and Cold Water
- Service Bay Faucet
- Vacu-Jet Vent Pipe Covers
- Demand Water System
- Soap Dispenser in Kitchen

OPTIONS

- Power Water Hose Reel
- RV Sani-Con Tank Drainage System
- Insta-Hot® Water
- Bathtub (43PBQ, 45PBT, 45PBQ)

HEATING, VENTS AND AIR CONDITIONING

STANDARD FEATURES

- Two 15M BTU Low-Profile Ducted Roof Air Conditioners with Wall Thermostat and Heat Pump (Only 40PBD, 40PBQ)
- Three 15M BTU Low-Profile Ducted Roof Air Conditioners with Wall Thermostat and Heat Pump (N/A: 40PBD, 40PBQ)
- Two 25M BTU Electronic Ignition Furnaces
- Electronic AC/Heat Climate Control System
- 12V Attic Fan in Bathroom and in Private Lavatory
- 12V Attic Fan with Wall Thermostat in Kitchen

OPTIONS

- Aqua-Hot® Heating System (ILO Furnace and Water Heater)
- One Low-Profile 110V Baseboard Heater (Only 43PBQ)

**WINDOWS, DOORS AND AWNINGS****STANDARD FEATURES**

- Flush Mount Radius Dual Pane Safety Glass Dark Tinted Windows
- Window with Stationary Glass on Slide-Out Endwall, Dinette Side
- Front Entry Door with Air Seal, Removable Top Screen and Front Door Awning
- Keyless Remote Entry System with Pocket Remote
- Tinted Skylight in Bathroom
- Topper Awnings on Slide-Out Houses
- Window Awnings on All Slide-Out House Windows (N/A: Passenger Side Front Slide-Out Windows)
- Patio Awning with Color-Coordinated Hardware
- Bedroom Window Awnings

OPTIONS

- Carefree® Automatic Patio Awning
- Girard® Automatic Patio Awning with Remote and Aerodynamic End Caps (Eliminates Front Door Awning on 40PBD)
- Girard® Automatic Front Door Awning with Remote and Switch
- Girard® Window Awning

SAFETY**STANDARD FEATURES**

- Back-Up Alarm
- Fire Extinguisher
- Deadbolt Lock on Entrance Door
- Lighted Interior and Exterior Grab Handles
- 120V GFI Protected Circuit (Kitchen, Bath, Service Bay)
- LP Gas Detector
- Smoke Detector
- Carbon Monoxide Detector
- Integrated Pilot and Co-Pilot Three Point Seat Belts (Lap and Shoulder)
- Third Brake Safety Light
- Egress Window

OPTIONS

- Deluxe Security Alarm System
- Security Safe
- Collision Avoidance System

CHASSIS/ENGINE/SUSPENSION**STANDARD FEATURES**

- Roadmaster S-Series Chassis
- Cummins® ISM-II 500 HP Electronic Engine with Allison® 4000 MH 6-Speed World Transmission and Electronic Shifter
- Torque: 1,550 lbs./ft. Max.
- Engine Displacement 661"/11.0L
- Dual Fuel Fill
- 200 Amp Alternator
- Rear Axle Ratio: 4.30:1
- Tires: Goodyear 295/80R/22.5
- Polished Aluminum Wheels
- Full Cushion Air Glide Suspension with Ten Air Bags and Ten Bilstein® Shock Absorbers
- Air Suspension with Ping Tank
- Automatic Traction Control
- Anti-Locking Braking System with Front Disc Brakes and Rear Drum Brakes
- Tag Axle with Anti-Lock Braking System
- Auto Slack Adjusters on Brakes
- Two-Stage Jacobs Engine Brake
- Transmission Temperature Gauge
- Transmission Oil Cooler
- Water/Fuel Separator
- Engine Block Heater with Switch in Dash
- Rear Aluminum Side Mount Radiator with Charge Air Cooler
- Air Cleaner Restriction Indicator
- Automatic Air Leveling System
- Undercoating
- 10,000 Lb. Hitch Receiver and 7/4 Way Trailer Plug

OPTIONS

- Series 60 Detroit Diesel 515 HP Engine with Allison® 4000 MH 6-Speed World Transmission and Electronic Shifter; Torque: 1,650 lbs./ft.; 858" Engine Displacement
- Cummins® ISX-525 HP Engine with Allison® 4000 MH 6-Speed World Transmission and Electronic Shifter; Torque: 1,650 lbs./ft.; 912" Engine Displacement
- Hydraulic Leveling System
- Dual Leveling Systems (Air/Hydraulic)

Due to the large variety of options and floorplan arrangements available to our customers, actual weights for each unit can differ significantly. Holiday Rambler provides a weight sticker on each unit we produce which includes that unit's tank capacities and approximate weight. Consult your local Holiday Rambler dealer for unit availability and further information.

The information printed in this brochure reflects product design, fabrication, and component parts at the date of printing. The manufacturer reserves the right, at any time, to make changes in product design or material or component specifications as its sole option, without notice. This includes the substitution of components of a different brand or trade name, which will result in comparable performance. All information printed in this brochure is subject to change after the date of printing. Some features shown or mentioned in this brochure are optional and may only be available in selected floorplans. Photographs may show props or decorations that are not standard equipment on Holiday Rambler models. Holiday Rambler, the HR logo and its design, are registered trademarks. All other products and company names are trademarks and/or registered trademarks of their respective holders.

While the color of the motorhome's exterior and the interior fabrics depicted in this sales brochure are fair and reasonable depictions, the colors depicted may not be an exact match of the actual colors because of the variances in photo-processing and variances caused by inserting the photographs within the sales brochure. Due to product improvements, changes during the model year and/or transcription errors that may occur, information represented within this brochure may not be accurate at the time of your purchase. If certain information is significant to your purchasing decision, please confirm the information with your dealer prior to submitting your order.

The actual overall length of the recreational vehicle may differ from that indicated in the brochure due to variances in the manufacturing process and/or installed components. The actual length may be greater or less than that indicated.

Component part and appliance manufacturers issue limited warranties covering those portions of the recreational vehicle not covered by the Limited Warranties issued by the Monaco Coach Corporation companies. To learn more on what specific component parts and appliances are excluded from the Limited Warranties issued by the Monaco Coach Corporation companies please contact your selling dealership or Monaco Coach Corporation directly or review the warranty packet inside the recreational vehicle.



Weights	40PBD	40PBT	40PBQ
Gross Vehicle Weight Rating (Lbs.)	47,600	47,600	47,600
Gross Combined Weight Rating (Lbs.)*	57,600	57,600	57,600
Gross Axle Weight Rating (Front) (Lbs.)	14,600	14,600	14,600
Gross Axle Weight Rating (Rear) (Lbs.)	23,000	23,000	23,000
Tag Axle Weight Rating (Lbs.)	10,000	10,000	10,000

Measurements			
Wheelbase	245"	245"	245"
Overall Length	40' 10"	40' 10"	40' 10"
Overall Height (with A/C)(Add 5" for Satellite Option)	12' 1"	12' 1"	12' 1"
Interior Height	82"	82"	82"
Interior Width	96"	96"	96"
Exterior Width	100.5"	100.5"	100.5"

Tank Capacity**			
Water Heater (Gal.)	10	10	10
Gray Tank (Gal.)	56	56	56
Black Tank (Gal.)	40	40	40
Fresh Tank (Gal.)	100	100	100
Fuel Tank (Gal.)	150	150	150
LP Tank (Gal.)***	38	38	38

Weights	43PBQ	45PBT	45PBQ
Gross Vehicle Weight Rating (Lbs.)	47,600	47,600	47,600
Gross Combined Weight Rating (Lbs.)*	57,600	57,600	57,600
Gross Axle Weight Rating (Front) (Lbs.)	14,600	14,600	14,600
Gross Axle Weight Rating (Rear) (Lbs.)	23,000	23,000	23,000
Tag Axle Weight Rating (Lbs.)	10,000	10,000	10,000

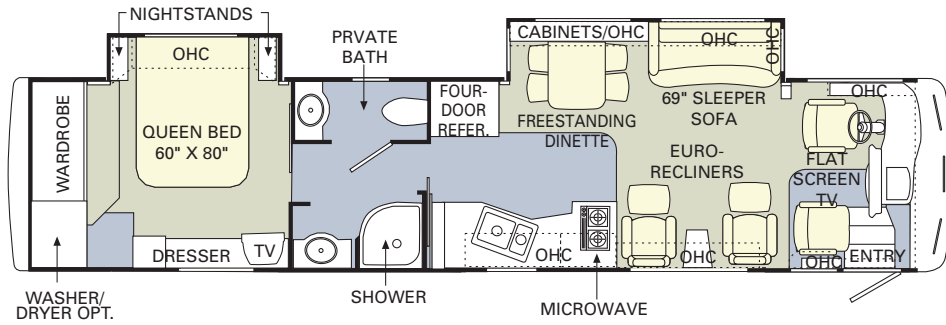
Measurements			
Wheelbase	281.5"	283.5"	283.5"
Overall Length	43' 10"	45'	45'
Overall Height (with A/C)(Add 5" for Satellite Option)	12' 1"	12' 1"	12' 1"
Interior Height	82"	82"	82"
Interior Width	96"	96"	96"
Exterior Width	100.5"	100.5"	100.5"

Tank Capacity**			
Water Heater (Gal.)	10	10	10
Gray Tank (Gal.)	56	56	56
Black Tank (Gal.)	40	40	40
Fresh Tank (Gal.)	100	100	100
Fuel Tank (Gal.)	150	150	150
LP Tank (Gal.)***	38	38	38

* Towing capacity is limited by GCWR; your vehicle's towing capacity is the difference between the GCWR and the actual vehicle weight, including all water, fuel, passengers and cargo. Your towed vehicle should be equipped with auxiliary brakes if the weight of the towed vehicle exceeds 1,000 lbs. Consult your Owner's Manual for further towing information.

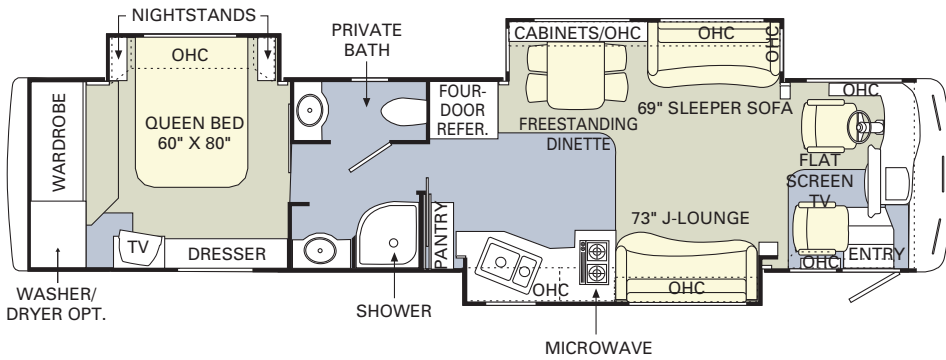
** All tank capacities are estimated based upon calculations provided by the tank manufacturers and represent approximate capacities. The actual "usable capacity" may be greater or less than the estimated capacities based upon fabrication and installation of the tanks.

*** Actual filled LP capacity is 80% of listing due to safety shut-off required on tank.



40PBD

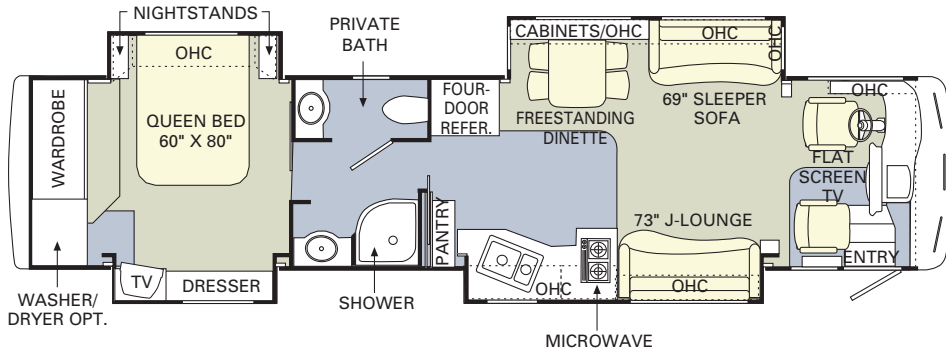
- Options Include:
- King Bed
 - Queen Air Mattress with Digital Remote
 - King Air Mattress with Digital Remote
 - Leather J-Lounge – Curbside
 - Leather Sleeper Sofa – Curbside
 - Leather Sleeper Sofa – Roadside
 - Leather J-Lounge – Roadside
 - Wraparound Computer Table
 - Booth Dinette



40PBT

- Options Include:
- King Bed
 - Queen Air Mattress with Digital Remote
 - King Air Mattress with Digital Remote
 - Leather J-Lounge – Curbside
 - Leather Sleeper Sofa – Curbside
 - Leather Sleeper Sofa – Roadside
 - Leather J-Lounge – Roadside
 - Leather Lafer Recliner Chair with Footrest – Roadside
 - Window Seat with Three Drawers
 - Wraparound Computer Table
 - Booth Dinette
 - Bath Tub

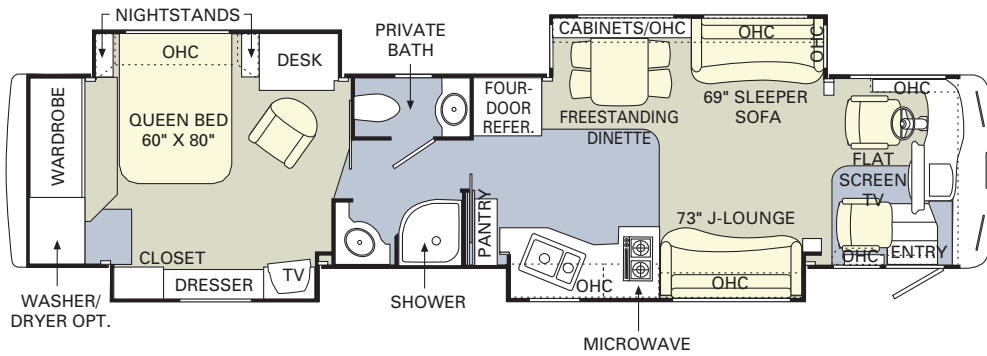
● CARPET
 ● TILE



40PBQ

Options Include:

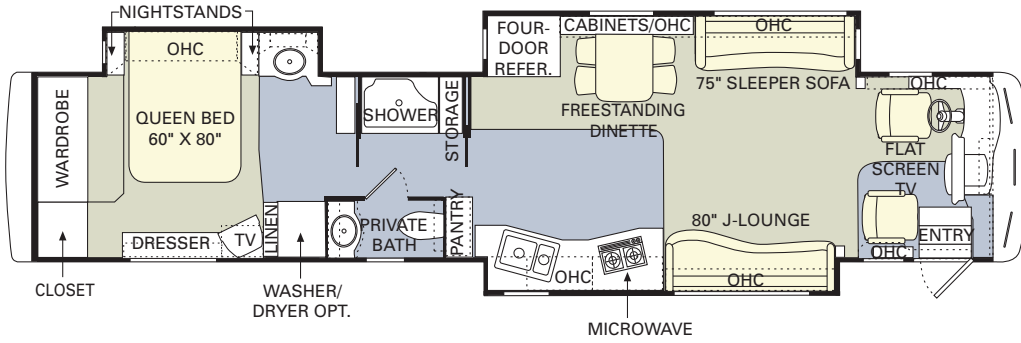
- King Bed
- Queen Air Mattress with Digital Remote
- King Air Mattress with Digital Remote
- Leather J-Lounge – Curbside
- Leather Sleeper Sofa – Curbside
- Leather Sleeper Sofa – Roadside
- Leather J-Lounge – Roadside
- Window Seat with Three Drawers
- Leather Lafer Recliner Chair with Footrest – Roadside
- Wraparound Computer Table
- Booth Dinette



43PBQ

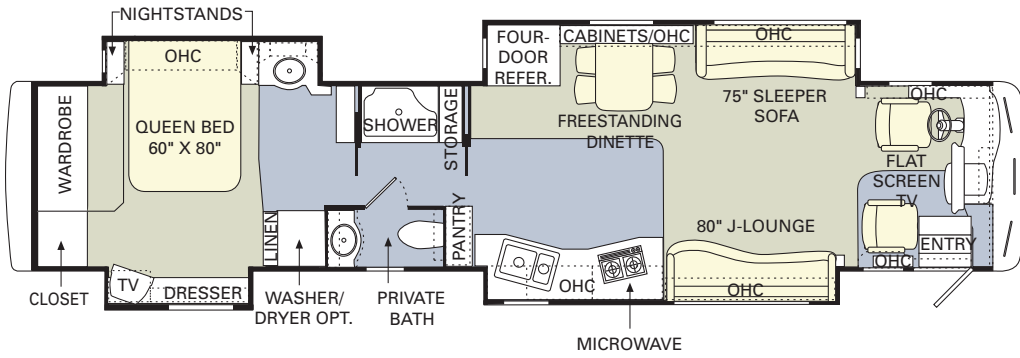
Options Include:

- King Bed
- Queen Air Mattress with Digital Remote
- King Air Mattress with Digital Remote
- Leather J-Lounge – Curbside
- Leather Sleeper Sofa – Curbside
- Leather Sleeper Sofa – Roadside
- Leather J-Lounge – Roadside
- Leather Lafer Recliner Chair with Footrest – Roadside
- Window Seat with Three Drawers
- Wraparound Computer Table
- Booth Dinette
- Bath Tub



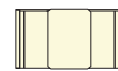
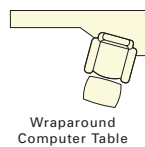
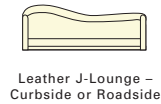
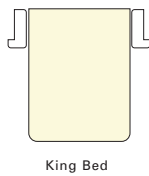
45PBT

- Options Include:
- King Bed
 - Queen Air Mattress with Digital Remote
 - King Air Mattress with Digital Remote
 - Leather J-Lounge – Curbside
 - Leather Sleeper Sofa – Curbside
 - Leather Sleeper Sofa – Roadside
 - Leather J-Lounge – Roadside
 - Leather Lafer Recliner Chair with Footrest – Roadside
 - Wraparound Computer Table
 - Booth Dinette
 - Bath Tub



45PBQ

- Options Include:
- King Bed
 - Queen Air Mattress with Digital Remote
 - King Air Mattress with Digital Remote
 - Leather J-Lounge – Curbside
 - Leather Sleeper Sofa – Curbside
 - Leather Sleeper Sofa – Roadside
 - Leather J-Lounge – Roadside
 - Leather Lafer Recliner Chair with Footrest – Roadside
 - Window Seat with Three Drawers
 - Wraparound Computer Table
 - Booth Dinette
 - Bath Tub



OPTIONAL ITEMS (not to scale)

CARPET
TILE



2005 | NAVIGATOR®



This is Living®



HOLIDAY RAMBLER®

This is Living®

www.holidayrambler.com

(800) 245-4778

MONACO COACH CORPORATION

Monaco is traded on the New York Stock Exchange under the listing MNC
© 2004, Monaco Coach Corporation 1104 NPN:BROHNAV Litho in USA.

