

**HOLIDAY RAMBLER** ✨ **2004 ALUMASCAPE**





WELCOME TO THE 2004 ALUMASCAPE FIFTH WHEEL BY HOLIDAY RAMBLER. YOU'RE LOOKING AT THE RESULT OF 50 YEARS OF PERFECTING THE RV EXPERIENCE. AND THE GOAL IS STILL THE SAME: TO OFFER A GREAT PRODUCT AT A TERRIFIC VALUE THAT'S WELL WITHIN REACH. THAT'S WHY YOU CAN COUNT ON THE ALUMASCAPE FOR ITS INDUSTRY-LEADING QUALITY AND INNOVATION. PLUS, YOU'LL HAVE A WIDE SELECTION OF FLOORPLANS, DECORS AND FURNISHINGS, AS WELL AS THE OPTION OF NUMEROUS EXCITING APPLIANCE AND ENTERTAINMENT FEATURES. SO WELCOME ABOARD A TOWABLE WITH A LOT OF HERITAGE ON ITS SIDE. AND WELCOME TO THE FAMILY.



35SKT in Chambray Blue with Vintage Oak cabinetry.



## SHOWING OUR COLORS FOR 50 YEARS.

As part of our celebration, the Alumascape Fifth Wheel is available in a 50th Anniversary Golden Heritage Package. This special edition includes many extra touches, including upgraded fabrics and carpeting, a unique Corian® countertop design in the kitchen and bath, additional pillows, and an embroidered throw in the living room.



Manufactured in, not added on. 3M Scotchgard™ Carpet Stain Release is applied during the carpet manufacturing process for a higher level of protection. Dupont Teflon® soil repellent is applied to virtually all upholstery fabric during the finishing process for superior coverage.\*

\*Brand and application of carpet or upholstery fabric protection may vary depending on date recreational vehicle was manufactured.

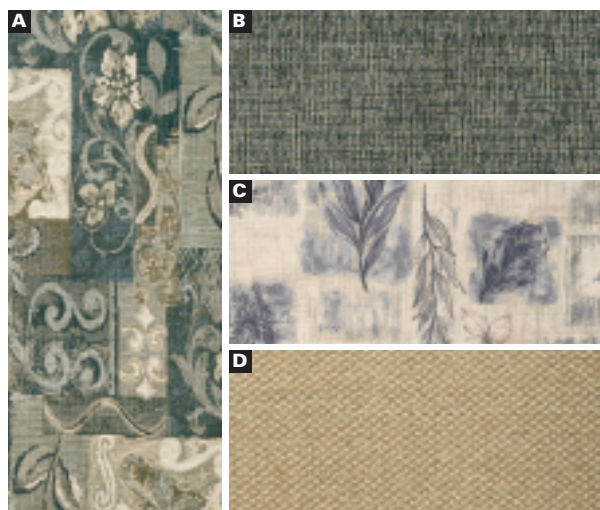


# EXTERIOR COLORS | FABRICS | WOODS

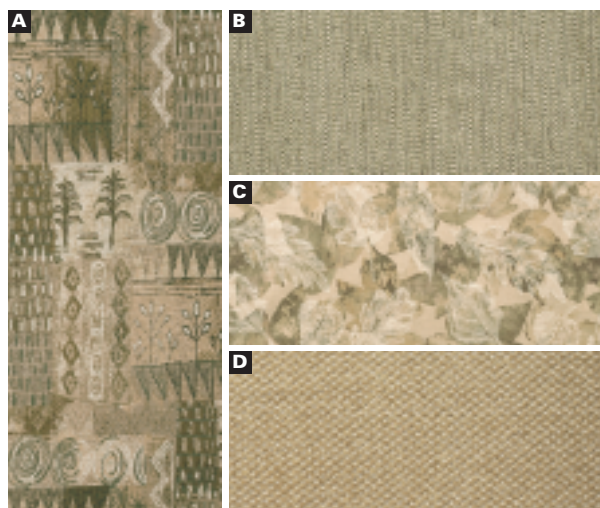


50TH ANNIVERSARY GOLDEN HERITAGE

**A** Sofa   **B** Accent   **C** Bedspread   **D** Carpet



CHAMBRAY BLUE



SHERWOOD GREEN



SAND RIDGE TAN



VINTAGE OAK



LIGHT MAPLE



WALNUT

## BODY AND FRAME CONSTRUCTION

### Standard Features

- Alumaframe® Superstructure
- E-Coated Frame
- Vinyl Exterior Graphics
- Smooth Metal .040 Sidewalls
- Fiberglass Front and Rear Caps with Integrated Rear Bumper
- Main S/O House, 6'1" Head Room
- S/O Lock Down Arms
- 3/8" Foam Core, Thermal Barrier Laminated Sidewall Structure
- Rear Bay Cap with Three Windows
- Prep for Spare Tire
- Two Tone Color Fender Skirts/Wraps
- 1-1/2" Steel Framed Sub-Floor
- 5/8" Sturdi-Wood Flooring
- Laminated Bath Deck (Aluminum Frame)
- Aluminum Roof Structure with RV 2000 Exterior
- Vapor Barrier in Roof
- Hard Board Vinyl Ceiling
- Flat Floor Slide-Out – Main Living Area
- Enclosed Underbelly
- Triple Step
- Power Landing Jacks
- 5,200 Lb. Tandem Axles with Electric Brakes (N/A: 34RKT, 34RLT, 35SKT)
- 6,000 Lb. Tandem Axles with Electric Brakes (34RKT, 34RLT, 35SKT)
- Radial Tires
- Stylized 15" Sport Wheels with Chrome Center Hub (16" Tires on 29" Models and up)
- Adjustable Suspension System
- Extended Hitch

### Options

- Fiberglass Sidewalls
- 5200 Lb. Nev-R-Lube Axles
- 7,000 Lb. Nev-R-Lube Axles (with Chrome Wheels (5))
- 6,000 Lb. Nev-R-Lube Axles
- Quick Draw Electrical Leveling Rear (N/A with Stabilizer Jacks)
- Rear Ladder

- Stabilizer Jacks (N/A with Quick Draw Leveling)
- Shock Absorbers
- Chrome Rims (4 Wheels) (Included with 7,000 Lb. Axle Option)
- Aluminum (4) Rims
- Spare Tire with Sport Wheel (Included with 7,000 Lb. Axle Option)
- Wrap Storage Doors
- Bike Rack

## APPLIANCES AND ACCESSORIES

### Standard Features

- 6 cu. ft. 2-Way Refrigerator
- Microwave with Touch Control
- 21" High-Output Three-Burner Range/Oven
- Systems Monitor Panel on Range Hood (12 Volt Fan)
- Bi-Fold Range Cover
- Telephone Jacks in Kitchen, Dinette and Bedroom Area

### Options

- 8 cu. ft. 2-Way Refrigerator
- Camping Convenience Group (Four 2-Way Radios, Rechargeable Flashlight, Cord Reel and Pop-Up Hamper/Trash Can)
- DSS Dish with Stand
- Washer/Dryer Prep with 50 Amp Service (Requires 10 Gal. Water Heater)
- Vented Washer/Dryer Combo (Where Applicable)
- Vented Washer/Dryer Stacked (Where Applicable)
- 27" Color TV with Remote Control (Living Area) (TV Swivel Base Required)
- 20" Color TV with Remote Control (Living Room Area) (TV Swivel Base Required except in 26RKS)
- 13" Color TV with Remote Control (Bedroom)
- TV Swivel Base (Required Option for 20" and 27" TV Option) (28RLD with TV Option Only)
- Outside Cooking Grill with Quick Disconnect (Where Applicable)

## INTERIOR

### Standard Features

- Vintage Oak Cabinets
- Raised Panel Cabinet Doors
- Cabinet Hardware
- Catches on All Interior Drawers
- Raised Panel Refrigerator Door
- Wood Slide-Out Room Fascia with Trim Piece and Rosette
- Laminate Table Top and Countertops with Laminate Edging Throughout
- Laminate Countertop with Corian® Accent Edge – Galley and Lavatory
- Galley and Lavatory Backsplash
- Built-In Kitchen Trash Can
- Kitchen Sink Cover
- Decorative Clock
- Wood Headboard
- Silverware Tray
- Raised Panel Hollow Core Door
- Workstation with Keyboard Drawer (Where Applicable)
- TV Shelf in Bedroom
- Designer Picture (Where Applicable)
- Toilet Tissue Holders
- Carpeting and Pad in Living Area, Hallway and Bedroom
- Utility Center by Entrance Door (S/O Switches, Key Hooks and Security Light Switches)
- Linoleum in Kitchen, Bath and Entry
- O/H Cabinets in Main Floor Slide-Out above Sofa
- Pantry/Closet at Front Entry Door with Adjustable Shelves (Where Applicable)
- Magazine Rack in Stool Room Incorporated into Medicine Cabinet (Where Applicable)
- White Double Doors in Washer/Dryer Cabinet, Hamper in Lavatory Base
- Mini Struts on O/H Cabinet Doors with Top Hinges
- Wood Interior Grab Handle
- Doors on Backside of Island Kitchen

### Options

- Decors: Sand Ridge Tan, Chambray Blue, Sherwood Green
- 50th Anniversary Interior Golden Heritage Package – Upgraded Fabrics, Upgraded Carpeting, Embroidered Throw in Living Room, Two Additional Pillows in Lounge Area and One Additional Pillow in Bedroom
- Leaded Glass in Living Area
- Wood Choices: Light Maple, Walnut
- Roll-Out Pantry with Cabinet with 3 Baskets (Where Applicable)
- Wilsonart® Plank Flooring in Kitchen/Entry
- Kitchen Countertop Extension (End of Countertop)
- Kitchen Countertop Extension with Bar Stools (29RLT) (Bar Top)

## FURNITURE

### Standard Features

- Queen Bed with Shirt Closets or Wardrobe (26RKS, 27RKD, 27RLD, 30SKS)
- Bedroom Slide-Out with Chest of Drawers (N/A: 26RKS, 27RKD, 27RLD, 30SKS)
- Wardrobe Slide-Out (28RLD)
- Wood Booth Dinette with End Door and Arched Back Cushions
- Bedspread
- Wood Headboard
- Jackknife Sleeper Sofa with Bolsters
- Bar Stools (30RLD, 30SKS, 34RKT)

**Options**

- Hide-A-Bed (N/A: 27RLD, 29RLT)
- Hide-A-Bed Sofa with Footrests (N/A: 27RLD, 29RLT)
- Swivel Barrel Chair(s)
- Fabric Recliner(s)
- Ultra Vinyl Recliner Chair(s)
- Freestanding Dinette Table with Hidden Leaf and 4 Chairs (Half Back Style Chairs)
- Wardrobe Slide-Out (26RKS, 27RKD, 27RLD, 30SKS)
- Twin Beds with Nightstands (26RKS, 27RKD, 27RLD, 30SKS)

**ELECTRICAL SYSTEMS AND LIGHTS****Standard Features**

- Digital 12V Linear Series AM/FM with CD Player Stereo with 4 Speakers
- Wider Wall Switches
- Decorative Wall Light with Swing Arm in Living Area (Where Applicable)
- 12V Incandescent Ceiling Lights with Clear Lens
- Water Heater Switch
- Electrical Management System (30 Amp/12V with 55 Amp Conv.)
- Porch Light
- 120V Exterior Recept
- Hitch Light
- Center Blinking Light (Where Applicable)
- Disconnect and Battery Box
- Trunk Light
- Bath Bar Light
- Cable TV/DSS/VCR Ready with Video Box
- 12V Recept Located in Kitchen
- Wineguard® TV Antenna with New Cable Box
- Dual Exterior Cable/Satellite Recept

**Options**

- Exterior Radio with CD Player
- One 12V Deep Cycle Battery with Disconnect
- Two 12V Deep Cycle Batteries with Disconnect
- Solar Prep
- Fluorescent Lighting
- Two Exterior Security Lights – Individual Switches in the Utility Center
- Electrical Management System (50 Amp)
- Generator Prep
- 3.6 kW MicroQuiet (LP) Onan® Generator
- 5.5 kW Marquis Gold (LP) Onan® Generator
- Digital 12V Linear Series AM/FM with CD-DVD Player Stereo with 6 Upgrade Speakers, 40 Watt Amp

**PLUMBING AND LP SYSTEMS****Standard Features**

- White FBG Kitchen Sink with Chrome High Profile Single Handle Faucet
- Demand Water System with Water Pump
- 6-Gallon LP Gas Water Heater with Electronic Ignition (DSI)
- Bathroom Sink with Brass Faucet
- Brass Shower Fixtures
- Brass Shower Hose and Head
- ABS Tub/Shower (26RKS, 27RKD, 27RLD, 28RLD, 29RKD, 30RLD)
- Accordion Shower Door (26RKS, 27RKD, 27RLD, 28RLD, 29RKD, 30RLD)
- Fiberglass One-Piece Shower with Glass Door (29RLT, 30RKD, 30SKS, 31SKT, 32SKD, 34RKT, 34RLT, 35SKT)
- Water Management System with Bottom Drain (Includes Outside Shower)
- Water Heater By-Pass Kit
- Taller Toilet
- Two 30 Lb. LP Tanks with Automatic Changeover and Cover
- Water Heater Switch inside Unit
- Sewer Hose Storage with Hatch and Tube

**Options**

- 6-Gallon LP Gas/Electric Water Heater with Electronic Ignition (DSI)
- 10-Gallon LP Gas/Electric Water Heater (DSI)
- Fiberglass One-Piece Tub with Glass Door (29RLT, 30RKD, 30SKS, 31SKT, 32SKD, 34RKT, 34RLT, 35SKT)
- No-Fuss Flush Holding and Tank Rinsing System

**HEATING, VENTS AND AIR CONDITIONING****Standard Features**

- 30M BTU Electronic Ignition Furnace
- 35M BTU Electronic Ignition Furnace
- 40M BTU Electronic Ignition Furnace
- In-Floor Ducted Heating System
- Manual Roof Vent
- 12V Roof Vent in Bathroom
- Wire Prep and Ducting for 2nd A/C with Optional 50 Amp Service

**Options**

- One 13.5M BTU Air Conditioner, High-Capacity with Remote
- 15.0M BTU A/C ILO 13.5M High-Capacity with Remote
- One Heat Pump 15.0 BTU Air Conditioner High-Capacity with Remote
- Second 13.5M BTU, High-Capacity A/C with Remote (Requires 50 Amp Service Option)
- Second Heat Pump 15.0 BTU Air Conditioner High-Capacity with Remote
- Ceiling Fan
- Attic Fan with Thermo and Rain Sensor with 2-Way SW (Except Bath 1-Way SW)

**WINDOWS, DOORS AND AWNINGS****Standard Features**

- Dark Tinted Radius Windows
- Tinted Skylight in Bathroom
- 30" Radius Main Entrance Door with Anti-Skid Steps
- Window in Stool Room (Where Applicable)

**Options**

- Awning Option on All S/O Houses (Topper Awning if Regular Awning Does Not Work)
- Dual Pane Windows with Dark Tint
- Color Coordinated Texturized Fabric Awning
- Bay Window at Dinette (Not a Dual Pane Window)
- Swing-Out Entry Door Handle

**WINDOW TREATMENTS****Standard Features**

- Living Room: Mini Blinds, Padded Valances and Lambrequins
- Rear Bay Window Cap: Vertical Blinds in Place of Valances
- Kitchen: Mini Blinds and Valance
- Bedroom: Mini Blinds, Valances and Decorative Drapery Panels
- Bathroom: Mini Blinds and Valance

**Options**

- Pleated Day/Night Black Out Shades in Living Area and Bedroom



# ALUMASCAPE FIFTH WHEEL SPECIFICATIONS

Weights*	26RKS	27RKD	27RLD	28RLD	29RKD	29RLT	30RKD
Gross Vehicle Weight Rating (Lbs.)	12,100	12,100	12,100	12,100	12,400	12,400	12,400
GVWR with 7,000 Lb. Axles	N/A	N/A	N/A	N/A	N/A	N/A	N/A
Hitch Weight	—	—	—	1,720	—	2,100	2,280
Axles(s) Weight	5,200	5,200	5,200	5,200	5,200	5,200	5,200
Unloaded Vehicle Weight	—	—	—	8,780	—	9,360	9,940
Net Carrying Capacity (NCC)	—	—	—	—	—	3,040	—
NCC with 7,000 Lb. Axles	N/A	N/A	N/A	N/A	N/A	N/A	N/A
Tire Size	15"	15"	15"	16"	16"	16"	16"
Tire Size and Load Range with 7,000 Lb. Axles	N/A	N/A	N/A	N/A	N/A	N/A	N/A
Tire Load Range	D	D	D	E	E	E	E

Measurements							
Overall Length	27' 11"	28' 11"	28' 11"	30' 0"	30' 5"	31' 6"	32' 6"
Overall Height (Including A/C)	12'	11' 11"	11' 11"	11' 10"	11' 10"	12'	—
Exterior Width	98"	98"	98"	98"	98"	98"	—

Tank Capacity**							
Water Heater (Gal.)	6	6	6	6	6	6	—
Gray Tank (Gal.)	40/40	40/40	40/40	40/40	40/40	40/40	40
Black Tank (Gal.)	40	40	40	40	40	40	40
Fresh Tank (Gal.)	50	50	50	50	50	50	50
LP Tank (Gal.)***	30(2)	30(2)	30(2)	30(2)	30(2)	30(2)	30(2)

Weights*	30RLD	30SKS	31SKT	32SKD	34RKT	34RLT	35SKT
Gross Vehicle Weight Rating (Lbs.)	12,400	12,400	—	12,400	14,400	14,400	14,400
GVWR with 7,000 Lb. Axles	N/A	N/A	—	N/A	0	0	0
Hitch Weight	—	—	—	—	—	—	—
Axles(s) Weight	5,200	5,200	—	5,200	6,000	6,000	6,000
Unloaded Vehicle Weight	—	—	—	—	—	—	—
Net Carrying Capacity (NCC)	—	—	—	—	—	—	—
NCC with 7,000 Lb. Axles	N/A	N/A	—	N/A	—	—	—
Tire Size	16"	16"	—	16"	16"	16"	16"
Tire Size and Load Range with 7,000 Lb. Axles	N/A	N/A	—	N/A	16" G HT	16" G HT	16" G HT
Tire Load Range	E	E	—	E	E HT	E HT	E HT

Measurements							
Overall Length	32' 6"	32' 6"	—	33' 10"	35' 10"	35' 10"	35'
Overall Height (Including A/C)	11' 10"	—	—	12' 1"	—	12' 1"	12' 1"
Exterior Width	98"	—	—	98"	—	98"	98"

Tank Capacity**							
Water Heater (Gal.)	6	—	—	6	6	6	6
Gray Tank (Gal.)	40/40	40	—	40/40	40	40/40	40/40
Black Tank (Gal.)	40	40	—	40	40	40	40
Fresh Tank (Gal.)	50	50	—	50	50	50	50
LP Tank (Gal.)***	30(2)	30(2)	—	30(2)	30(2)	30(2)	30(2)

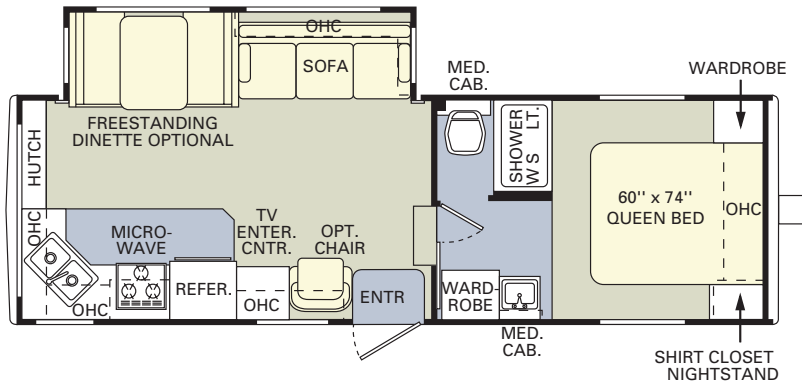
\* Weights may vary by options.

\*\* All tank capacities are estimated based upon calculations provided by the tank manufacturers and represent approximate capacities.  
The actual "usable capacity" may be greater or less than the estimated capacities based upon fabrication and installation of the tanks.

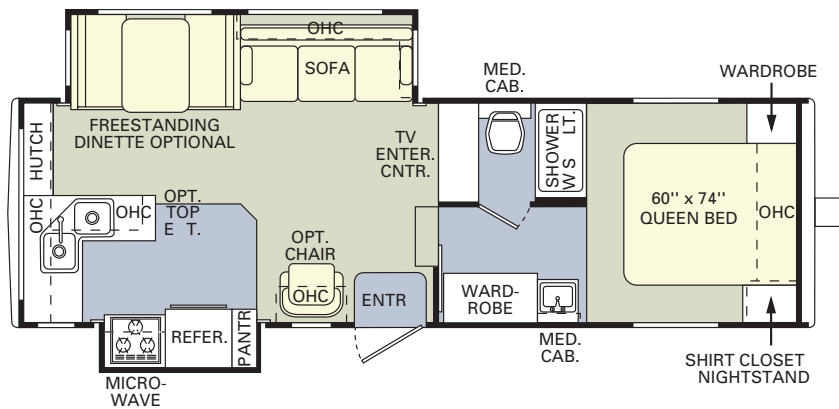
6 \*\*\* Actual filled LP capacity is 80% of listing due to safety shut-off required on tank.

# ALUMASCAPE FIFTH WHEEL FLOORPLANS

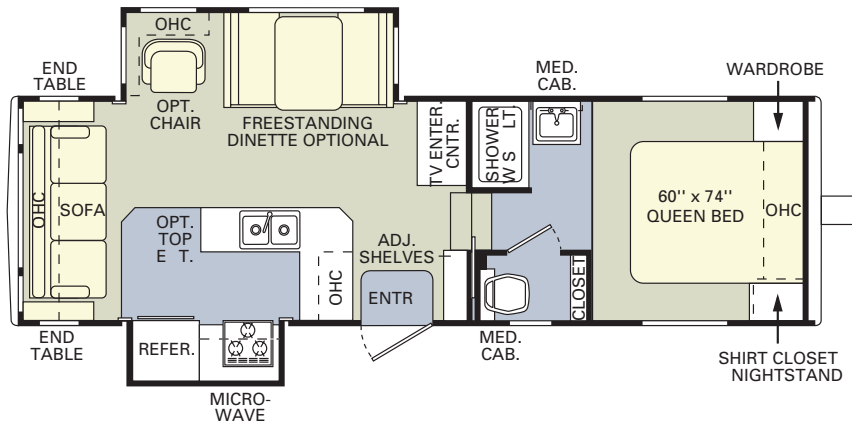
26 RKS



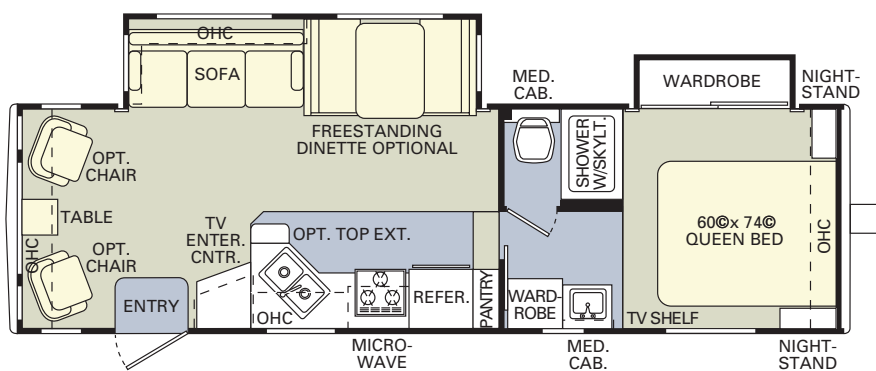
27 RKD



27 RLD

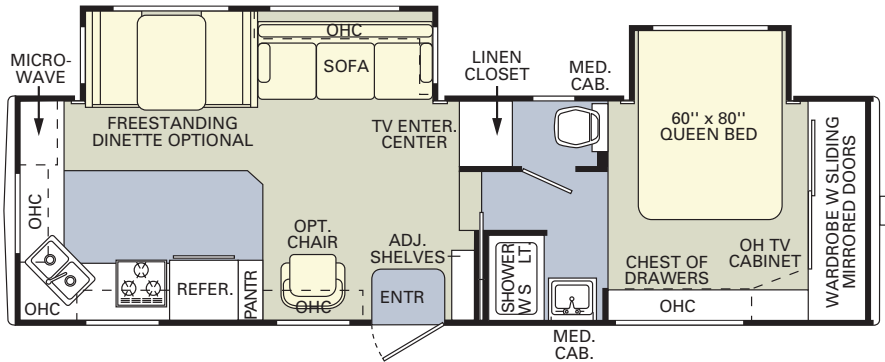


28 RLD

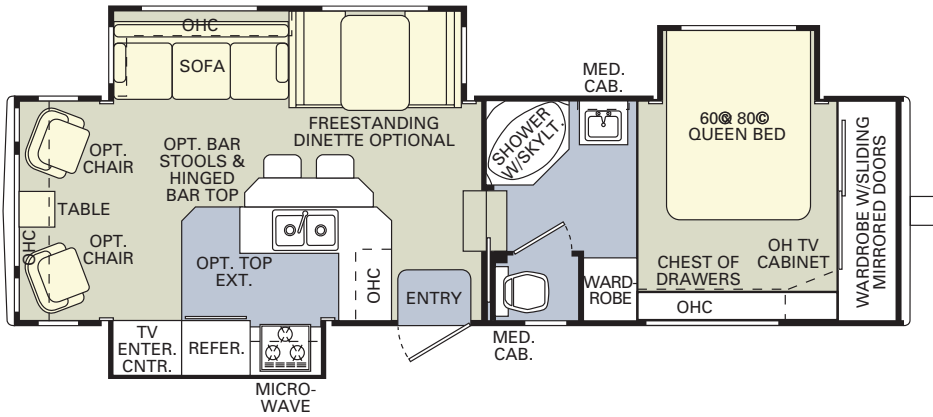


# ALUMASCAPE FIFTH WHEEL FLOORPLANS

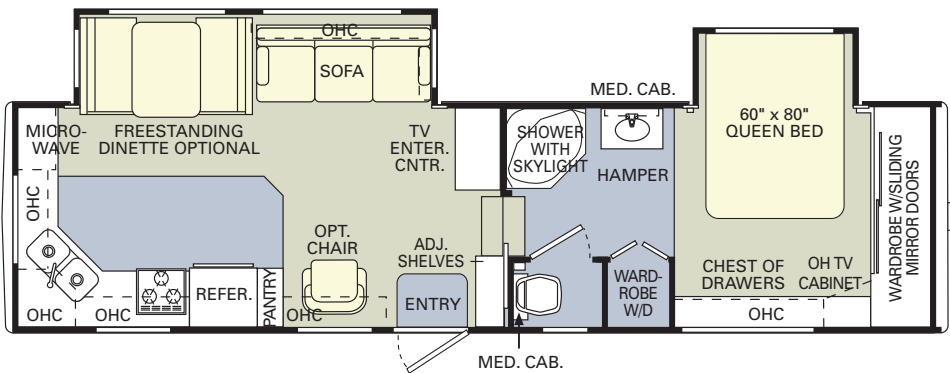
29RKD



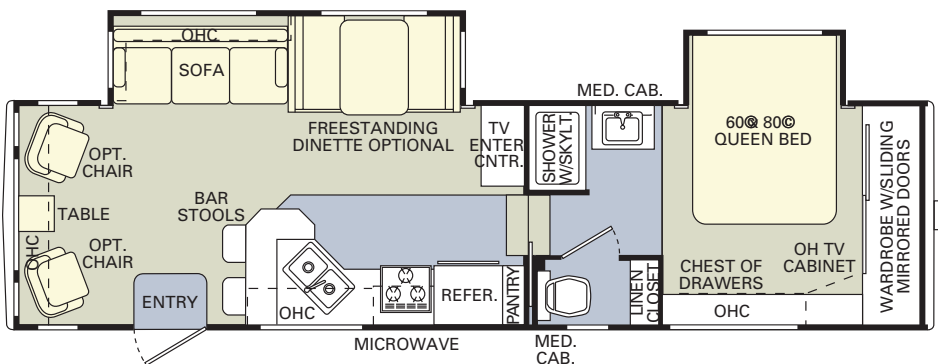
29RLT



30RKD



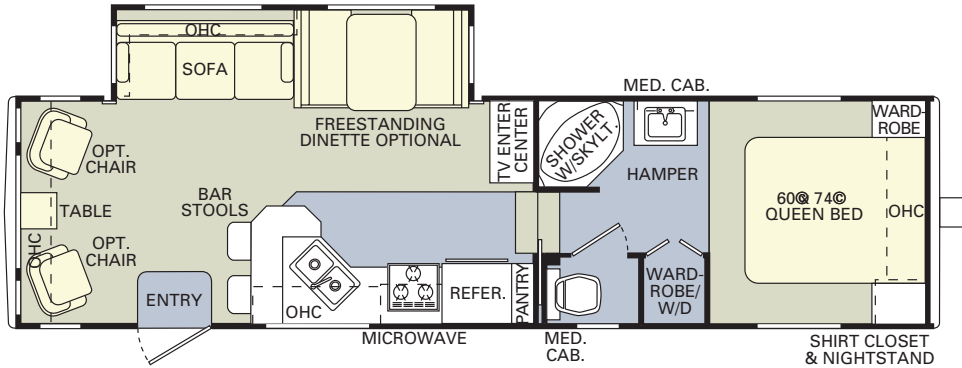
30RLD



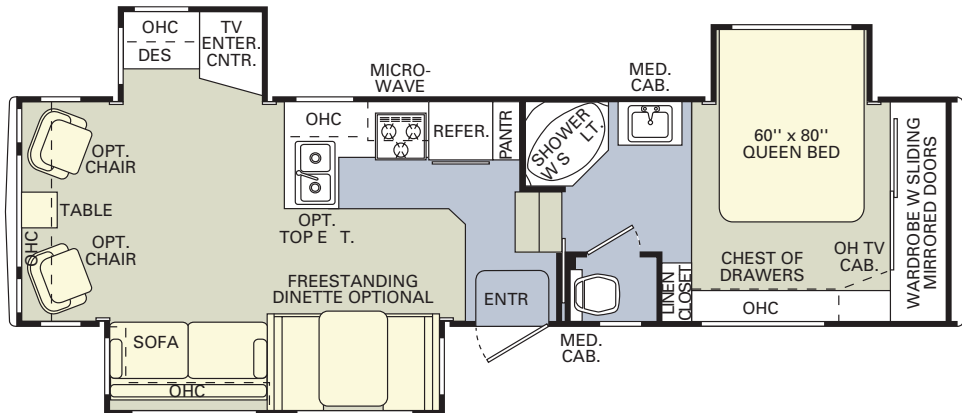


# ALUMASCAPE FIFTH WHEEL FLOORPLANS

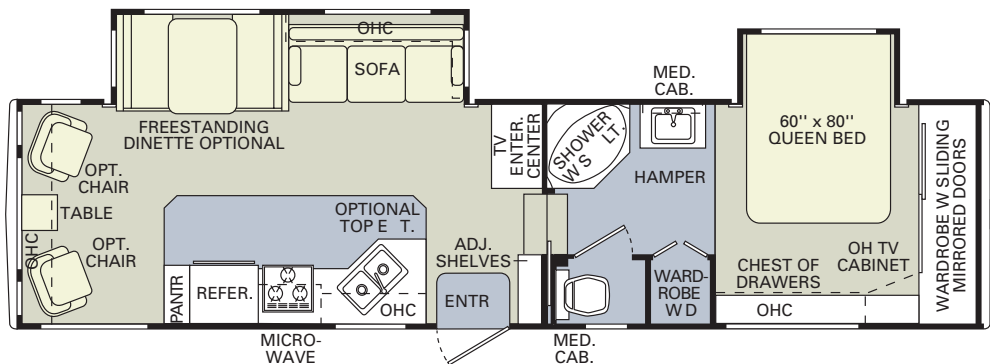
30SKS



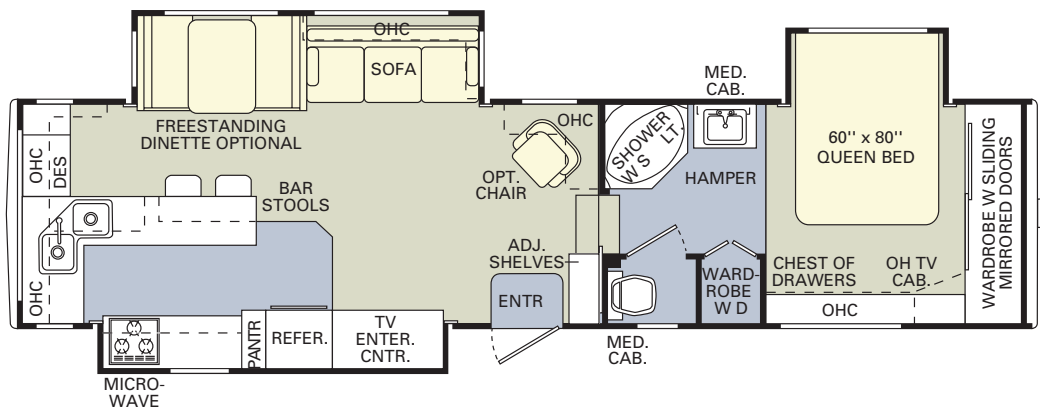
31SKT



32SKD

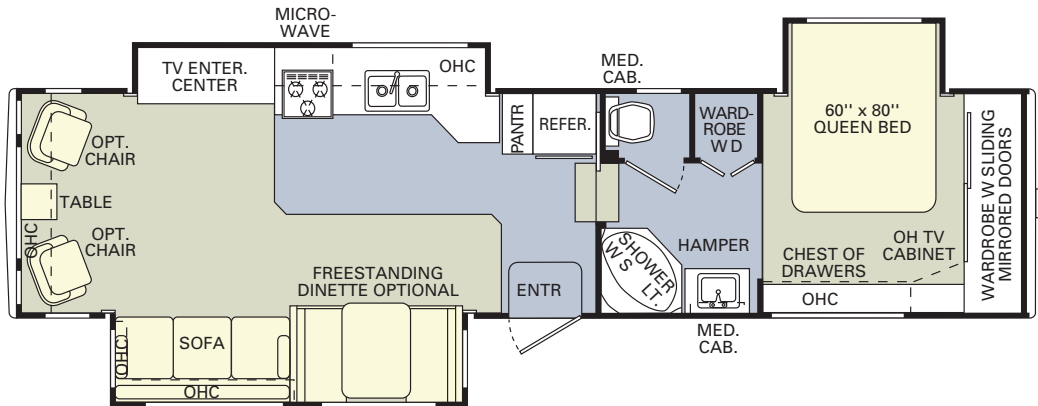


34RKT

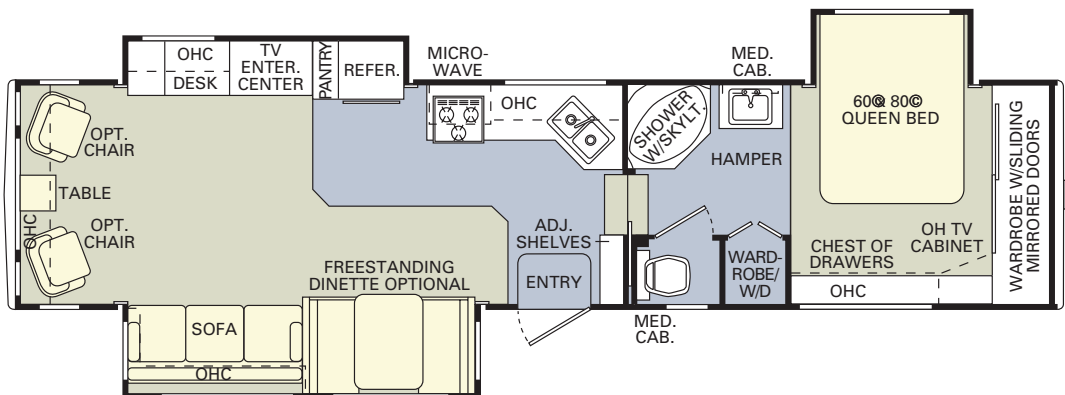


# ALUMASCAPE FIFTH WHEEL FLOORPLANS

34 RLT



35 SKT



## OPTIONAL ITEMS:

CARPET

LINOLEUM



Garden Tub



Freestanding Dinette  
with 4 Chairs



Twin Beds



Wardrobe Slide



1 or 2 Swivel  
Barrel Chairs



Hide-A-Bed Sofa



1 or 2 Fabric/Vinyl  
Recliners



Bar Stools

## THE FAMILY ADVANTAGE



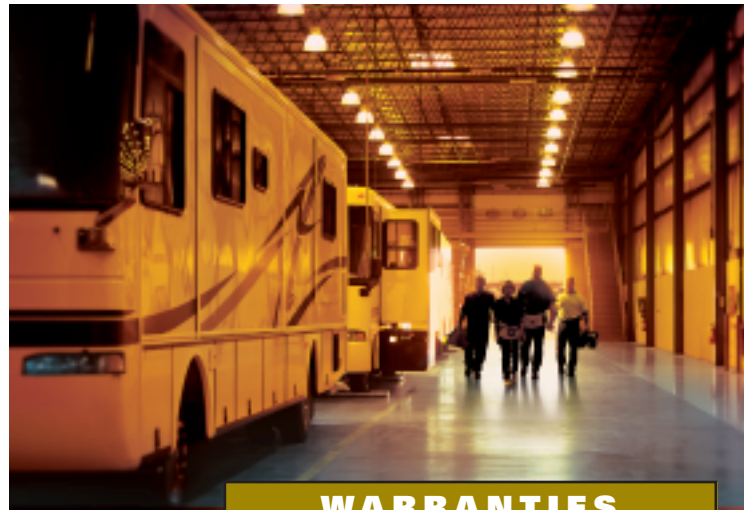
### WE ENCOURAGE YOU TO COMPARE THE HOLIDAY RAMBLER FAMILY ADVANTAGE.

When you purchase a travel trailer or fifth wheel from Holiday Rambler, you become part of an industry-leading family of companies called Monaco Coach Corporation. What does that mean for you? It means you have access to a wider array of benefits. To begin with, your recreational vehicle is built by a level of expertise that could only be achieved through the teamwork and combined experience of all our companies. You also get the benefit of our White Glove factory inspection program, for a higher level of quality assurance and added peace of mind. And your dealer will be happy to tell you about our other innovative programs, including our Extended Care service agreements. Of course, once you're on the road, you'll have access to our nationwide network of more than 350 service facilities, meaning wherever you travel, you're never far from a friend.



### 350 SERVICE FACILITIES NATIONWIDE AND GROWING.

Ready to roll? In a 2004 Holiday Rambler, the strength of our entire family is behind you every mile of the way.



### WARRANTIES

**12 MONTH/24,000 MILE**  
basic limited warranty

**5 YEAR/50,000 MILE**  
limited warranty on aluminum or steel frame  
structure of sidewall, roof, front and rear cap

See owner's manual for complete details.



**MONACO COACH CORPORATION**

Due to the large variety of options and floorplan arrangements available to our customers, actual weights for each unit can differ significantly. Holiday Rambler provides a weight sticker on each unit we produce which includes that unit's tank capacities and approximate weight. Consult your local Holiday Rambler dealer for unit availability and further information.

The information printed in this brochure reflects product design, fabrication, and component parts at the date of printing. The manufacturer reserves the right, at any time, to make changes in product design or material or component specifications as its sole option, without notice. This includes the substitution of components of a different brand or trade name, which will result in comparable performance. All information printed in this brochure is subject to change after the date of printing. Some features shown or mentioned in this brochure are optional and may only be available in selected floorplans. Photographs may show props or decorations that are not standard equipment on Holiday Rambler models. Holiday Rambler, the HR logo and its design, are registered trademarks. All other products and company names are trademarks and/or registered trademarks of their respective holders.

While the color of the towable's exterior and the interior fabrics depicted in this sales brochure are fair and reasonable depictions, the colors depicted may not be an exact match of the actual colors because of the variances in photo-processing and variances caused by inserting the photographs within the sales brochure. Due to product improvements, changes during the model year and/or transcription errors that may occur, information represented within this brochure may not be accurate at the time of your purchase. If certain information is significant to your purchasing decision, please confirm the information with your dealer prior to submitting your order.



# THIS IS YOUR GATEWAY TO A LIFE OF ADVENTURE.



FOR 50 YEARS, HOLIDAY RAMBLER HAS BEEN INTRODUCING FAMILIES ACROSS THE COUNTRY TO THE EXCITEMENT OF THE RV LIFESTYLE. AND WHERE BETTER TO BEGIN THAN IN A 2004 ALUMASCAPE TRAVEL TRAILER. IT ALL STARTS WITH THE LEGENDARY QUALITY OF OUR EXCLUSIVE ALUMAFRAME® SUPERSTRUCTURE AND THE INDUSTRY-LEADING INSULATION OF OUR MULTI-LAYER ROOF AND WALL DESIGN. ADD TO THAT YOUR CHOICE OF BEAUTIFUL INTERIOR DECORS AND WOODWORK STYLES, AS WELL AS NUMEROUS EXCITING KITCHEN AND ENTERTAINMENT OPTIONS, AND YOU HAVE A VALUE THAT CAN'T BE BEAT. ARE YOU READY TO GO? THERE'S A NEW ALUMASCAPE TRAVEL TRAILER JUST WAITING FOR YOU.



31CKS in Sand Ridge with Vintage Oak cabinetry.



## SHOWING OUR COLORS FOR 50 YEARS.

As part of our celebration, the Alumascape Travel Trailer is available in a 50th Anniversary Golden Heritage Package. This special edition includes many extra touches, including upgraded fabrics and carpeting, a unique Corian® countertop design in the kitchen and bath, additional pillows, and an embroidered throw in the living room.



Manufactured in, not added on. 3M Scotchgard™ Carpet Stain Release is applied during the carpet manufacturing process for a higher level of protection. Dupont Teflon® soil repellent is applied to virtually all upholstery fabric during the finishing process for superior coverage.\*

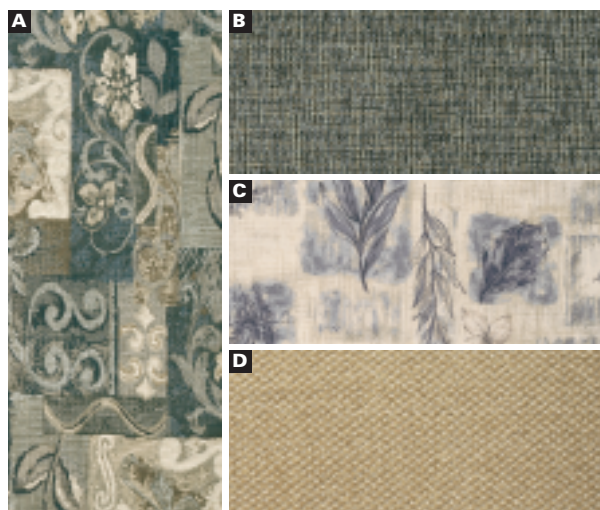
\*Brand and application of carpet or upholstery fabric protection may vary depending on date recreational vehicle was manufactured.

# EXTERIOR COLORS | FABRICS | WOODS

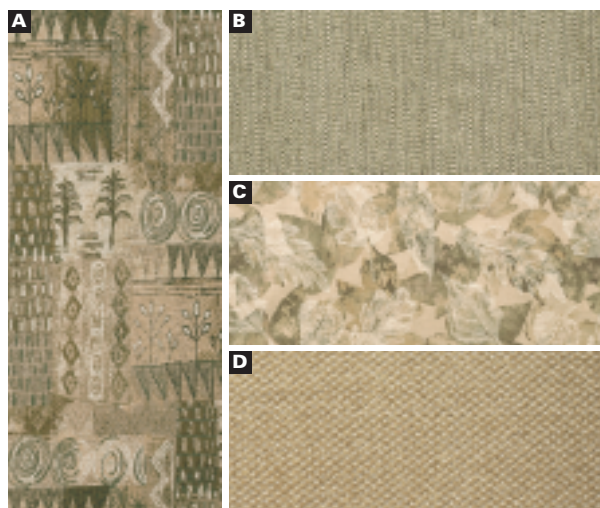


50TH ANNIVERSARY GOLDEN HERITAGE

**A** Sofa   **B** Accent   **C** Bedspread   **D** Carpet



CHAMBRAY BLUE



SHERWOOD GREEN



SAND RIDGE TAN



VINTAGE OAK



LIGHT MAPLE



WALNUT



## BODY AND FRAME CONSTRUCTION

### Standard Features

- Alumaframe® Superstructure
- E-Coated Frame
- New Vinyl Exterior Graphics
- Smooth Metal Sidewalls
- Fiberglass Front and Rear Caps with Integrated Rear Bumper
- Large Rear Storage Door in Rear Cap (28SKS, 29FKS)
- Two Tone Painted Skirts
- 3/8" Foam Core, Thermal Barrier, Sidewall Structure
- 1-1/2" Steel Framed Sub-Floor
- Slide-Out Lock Down Arms
- 5/8" Sturdi-Wood Flooring
- Aluminum Roof Structure with RV 2000 Exterior
- Triple Vapor Barrier in Roof
- Hard Board Vinyl Ceiling
- Flat Floor Slide-Out in Main Living Area
- 2-5/16" Ball Coupler
- 5,200 Lb. Tandem Axles with Electric Brakes
- 15" Radial Tires
- Enclosed Underbelly
- Stylized 15" Sport Wheels with Chrome Center Caps
- Pass-Through Storage (27SKS, 30SKS, 31CKS, 31SKS)
- Interior Height Increased to 84"
- Main Slide-Out Room Height 73"

### Options

- Stabilizer Jacks
- Shock Absorbers
- Spare Tire with Sport Wheel
- Rear Ladder
- Fiberglass Sidewalls
- Wrap Storage Doors
- Upgrade LP Bottle Cover
- Lighted Power Hitch Jack
- Nev-R-Lube Axles
- Cable Stow
- Chrome Rims – 4 Wheels
- Aluminum Rims – 4 Wheels

## APPLIANCES AND ACCESSORIES

### Standard Features

- 6 cu. ft. 2-Way Refrigerator
- 21" High-Output 3-Burner Range/Oven
- Systems Monitor Panel on Range Hood
- Telephone Jacks in Kitchen, Dinette and Bedroom Area

### Options

- 8 cu. ft. 2-Way Refrigerator
- Microwave with Touch Control
- Bi-Fold Range Cover
- Camping Convenience Group
- DSS Dish with Stand
- 20" Color TV with Remote Control in Living Area (Requires TV Swivel Base in 28SKS, 29FKS, 31CKS, 34SKD)
- 13" Color TV with Remote Control – Bedroom
- TV Swivel Base (28SKS, 29FKS) (31CKS, 34SKD with TV Option Only)
- Washer/Dryer Prep with 50 Amp Service (Requires 10 Gal. Water Heater) (34SKD)
- Washer/Dryer Cabinet, White Double Doors (34SKD)
- Outside Cooking Grill with Quick Disconnect (29FKS, 30SKS, 31CKS)
- Vented Washer/Dryer, Combo (34SKD)
- Vented Washer/Dryer, Stacked (34SKD)

## INTERIORS

### Standard Features

- Vintage Oak Cabinets
- Raised Panel Cabinet Doors
- Catches on All Interior Drawers
- Raised Panel Refrigerator Door Insert
- Wood Slide-Out Room Fascia with Wood Trim Piece and Rosette
- Silverware Tray
- Laminate Table Top and Countertops with Laminate Edging Throughout
- Laminate Countertop with Corian® Accent Edge, Galley and Lavatory
- Galley and Lavatory Backsplash
- Built-In Kitchen Trash Can
- Toe Kicks
- Kitchen Sink Cover
- Decorative Clock
- Raised Panel Hollow Core Door
- TV Shelf in Bedroom
- Designer Picture (Where Applicable)
- Toilet Tissue Holders
- Carpeting and Pad in Living Area, Hallway and Bedroom
- Linoleum in Kitchen, Bath and Entry
- Utility Center by Entrance Door
- Overhead Cabinets in Main Floor Slide-Out above Sofa
- Mini Struts in Overhead Cabinet Doors
- Hamper in Lavatory (34SKD)
- Magazine Rack in Stool Room Incorporated into Medicine Cabinet (Where Applicable)

### Options

- Decors: Sand Ridge Tan, Chambray Blue, Sherwood Green
- 50th Anniversary Interior Golden Heritage Package – Upgraded Fabrics, Upgraded Carpeting, Embroidered Throw in Living Room, Two Additional Pillows in Lounge Area and One Additional Pillow in Bedroom
- Leaded Glass in Living Area
- Wood Choices: Light Maple, Walnut
- Roll-Out Pantry with Cabinet with 3 Baskets (30FKS, 31CKS, 34SKD)
- Plank Flooring in Kitchen/Entry
- Kitchen Countertop Extension (N/A: 29FKS, 30FKS, 31SKS)

## FURNITURE

### Standard Features

- Queen Bed with Shirt Closet and Nightstands (Shirt Closet N/A with 30FKS) (N/A: 34SKD)
- Bunk Beds (31SKS)
- Bedspread
- Headboard
- Jackknife Sleeper Sofa with Bolsters
- Bar Stools (31SKS)
- Dinette with End Door and Arched Back Cushions

### Options

- Hide-A-Bed (N/A: 31SKS)
- Hide-A-Bed Sofa with Footrests (N/A: 31SKS)
- Swivel Barrel Chair
- Fabric Recliner
- Ultra Vinyl Recliner Chair
- Freestanding Dinette Table with Hidden Leaf and 4 Chairs
- Twin Beds with Nightstand (N/A: 30FKS, 34SKD)



## ELECTRICAL SYSTEMS AND LIGHTS

### Standard Features

- Electrical Management System
- Digital 12V Linear Series AM/FM with CD Player Stereo with 4 Speakers
- Wider Wall Switches
- Decorative Wall Light with Swing Arm in Living Area
- 12V Incandescent Ceiling Lights with Clear Lens
- Porch Light
- 120V Exterior Receptacle
- Hitch Light
- Trunk Light
- Center Blinking Light (Where Applicable)
- Disconnect and Battery Box
- Cable TV/DSS/VCR Ready with Video Box
- 12V Incandescent Ceiling Lights
- TV Antenna with New Cable Box
- Dual Exterior Cable Receptacle

### Options

- One 12V Deep Cycle Battery
- Two 12V Deep Cycle Batteries
- Solar Prep
- Two Exterior Security Lights – Individual Switches in the Utility Center
- Exterior Radio with CD Player
- Digital 12V Linear Series AM/FM with CD Player Stereo with 6 Upgrade Speakers, 40 Watt Amp and DVD

## PLUMBING AND LP SYSTEMS

### Standard Features

- White FBG Kitchen Sink with Chrome High Profile Single Handle Faucet
- Demand Water System with Water Pump
- 6-Gallon Gas Water Heater with Electronic Ignition (DSI)
- Bathroom Sink with Brass Faucet
- Brass Shower Fixtures
- Brass Shower Hose and Head
- Water Heater Bypass Kit
- Fiberglass One-Piece Shower with Glass Door (30SKS, 34SKD)
- ABS Tub Shower (N/A: 30SKS, 34SKD)
- Outside Shower
- Accordion Shower Door (N/A: 30SKS, 34SKD)
- Two 30 Lb. LP Tanks with Automatic Changeover and Cover
- Sewer Hose Storage with Hatch and Tube
- Heated Dump Valves
- Water Heater Switch inside Unit

### Options

- Fiberglass One-Piece Tub with Glass Door (30SKS, 34SKD)
- 6-Gallon LP Gas/Electric Water Heater with Electronic Ignition (DSI)
- 10-Gallon LP Gas/Electric Water Heater with Electronic Ignition (DSI) (N/A: 27SKS, 31SKS)
- No Fuss Flush

## HEATING, VENTS AND AIR CONDITIONING

### Standard Features

- 30M BTU Electronic Ignition Furnace (N/A: 34SKD)
- 35M BTU Electronic Ignition Furnace (34SKD)
- In-Floor Ducted Heating System
- Manual Roof Vent
- 12V Roof Vent in Bathroom

### Options

- One 13.5M BTU Air Conditioner, High-Capacity with Remote
- 15.0M BTU A/C ILO 13.5M High-Capacity with Remote
- One Heat Pump 15.0 BTU Air Conditioner High-Capacity with Remote
- Attic Fan with Thermo and Rain Sensor with 2-Way Switch

## WINDOWS AND DOORS

### Standard Features

- Dark Tinted Radius Windows
- Tinted Skylight in Bathroom
- 30" Radius Main Entrance Door with Anti-Skid Steps (N/A: 27SKS)
- 26" Radius Main Entrance Door with Anti-Skid Steps (27SKS, 31CKS, 34SKD)
- 26" Rear Entrance Door with Anti-Skid Steps (N/A with Twin Beds) (28SKS, 29FKS, 30FKS)
- Front Awning

### Options

- Dual Pane Windows with Dark Tint
- Awning on All Slide-Out Houses
- Color Coordinated Texturized Fabric Awning
- Bay Window at Dinette (N/A with Dual Pane)
- Swing Out Entry Door Handle

## WINDOW TREATMENTS

### Standard Features

- Living Room: Mini Blinds, Padded Valances and Lambrequins
- Kitchen: Mini Blinds and Valance
- Bedroom: Mini Blinds and Soft Valances

### Options

- Pleated Day/Night Black Out Shades in Living Area and Bedroom

## SAFETY FEATURES

### Standard Features

- Fire Extinguisher
- Deadbolt Lock(s) on Entrance Door(s)
- 120V GFI Protected Outlets (Kitchen, Bath, Exterior)
- Breakaway Switch
- Safety Chains
- Plug Guard for 12V Cord
- LP Gas Detector
- Smoke Detector
- Egress Window(s)
- Safety Glass

### Options

- Cable Store Retractable Safety System

# ALUMASCAPE TRAVEL TRAILER SPECIFICATIONS

Weights*	27SKS	28SKS	29FKS	30FKS
Gross Vehicle Weight Rating (Lbs.)	11,000	11,000	11,000	11,000
Hitch Weight (Lbs.)	N/A	N/A	11,100	N/A
Axle(s) Weight (Lbs.)	5,200	5,200	5,200	5,200
Unloaded Vehicle Weight (Lbs.)	N/A	N/A	6,810	N/A
Net Carrying Capacity (NCC) (Lbs.)	N/A	N/A	4,190	N/A
Tire Size	15"	15"	15"	15"
Tire Load Range	D	D	D	D

Measurements				
Overall Length	28' 9"	30' 1"	30' 1"	31' 9"
Overall Height (Including A/C)	10' 9"	10' 9"	10' 9"	10' 9"
Exterior Width	98"	98"	98"	98"

Tank Capacity**				
Water Heater (Gal.)	6	6	6	6
Gray Tank (Gal.)	40	40	40	40
Black Tank (Gal.)	40	40	40	40
Fresh Tank (Gal.)	40	40	40	40
LP Tank (Gal.)***	30(2)	30(2)	30(2)	30(2)

Weights*	30SKS	31CKS	31SKS	34SKD
Gross Vehicle Weight Rating (Lbs.)	11,000	11,000	11,000	11,000
Hitch Weight (Lbs.)	N/A	N/A	N/A	N/A
Axle(s) Weight (Lbs.)	5,200	5,200	5,200	5,200
Unloaded Vehicle Weight (Lbs.)	N/A	N/A	N/A	N/A
Net Carrying Capacity (NCC) (Lbs.)	N/A	N/A	N/A	N/A
Tire Size	15"	15"	15"	15"
Tire Load Range	D	D	D	D

Measurements				
Overall Length	31' 1"	32' 4"	31' 4"	35'
Overall Height (Including A/C)	10' 9"	10' 9"	10' 9"	10' 8"
Exterior Width	98"	98"	98"	98"

Tank Capacity**				
Water Heater (Gal.)	6	6	6	6
Gray Tank (Gal.)	40	40	40	40
Black Tank (Gal.)	40	40	40	40
Fresh Tank (Gal.)	40	40	40	40
LP Tank (Gal.)***	30(2)	30(2)	30(2)	30(2)

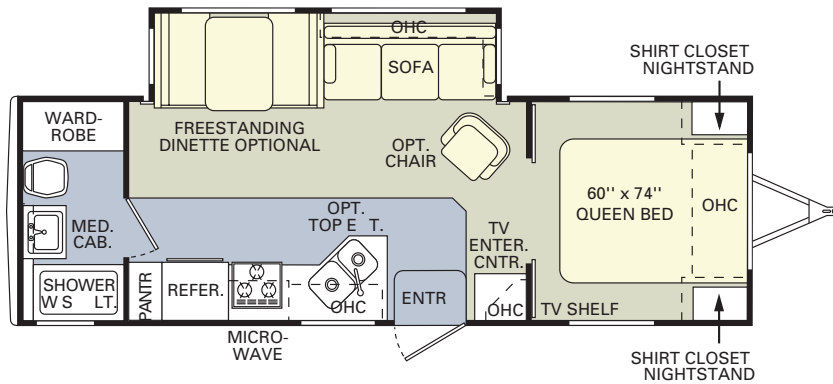
\* Weights may vary by options.

\*\* All tank capacities are estimated based upon calculations provided by the tank manufacturers and represent approximate capacities.  
The actual "usable capacity" may be greater or less than the estimated capacities based upon fabrication and installation of the tanks.

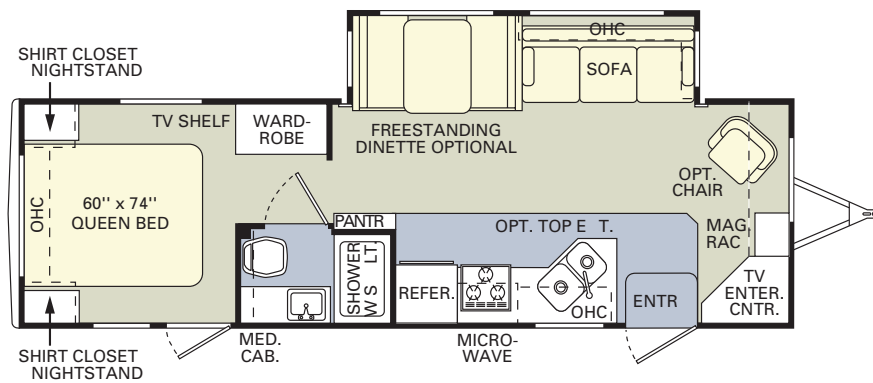
\*\*\* Actual filled LP capacity is 80% of listing due to safety shut-off required on tank.

# ALUMASCAPE TRAVEL TRAILER FLOORPLANS

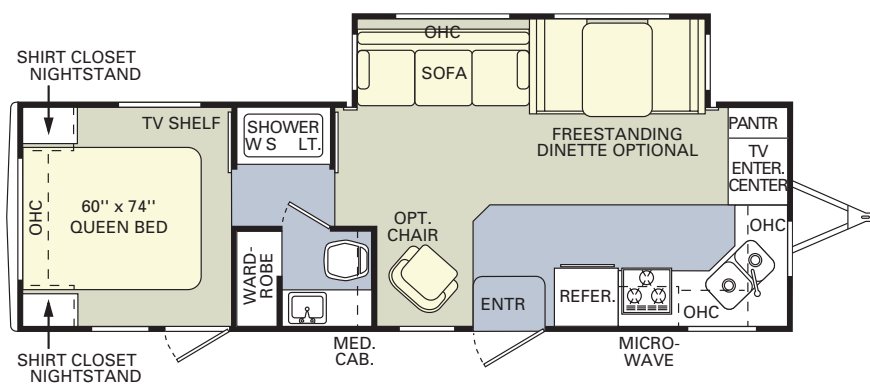
27 S K S



28 S K S



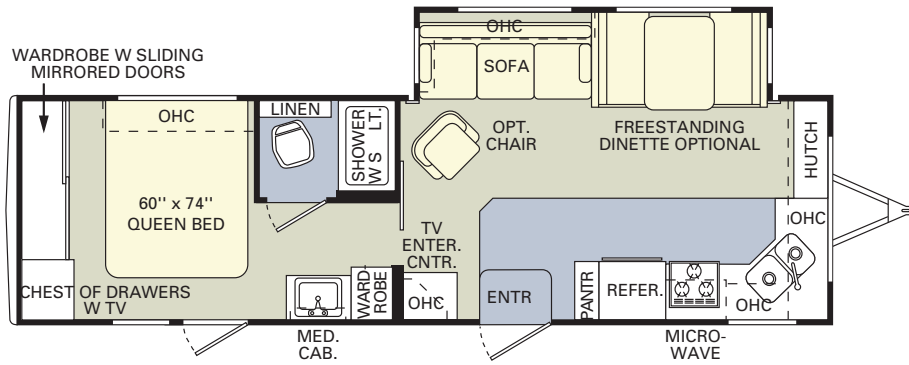
29 F K S



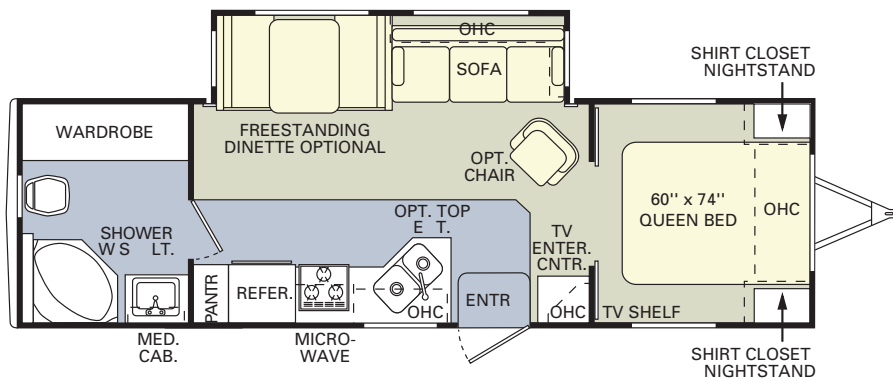


# ALUMASCAPE TRAVEL TRAILER FLOORPLANS

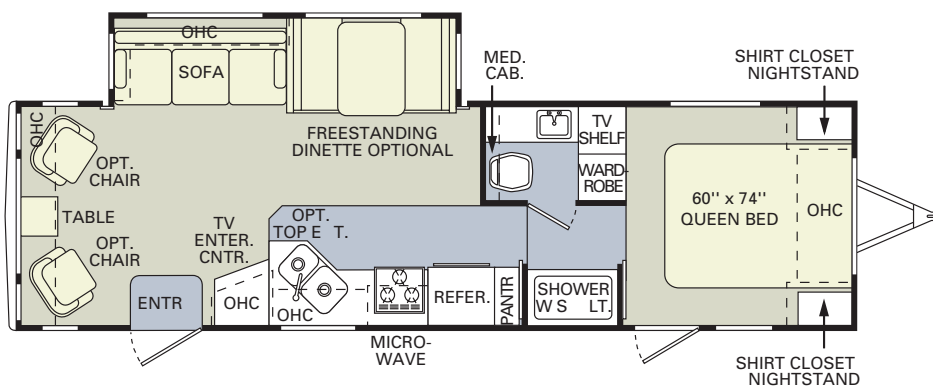
30FKS



30SKS

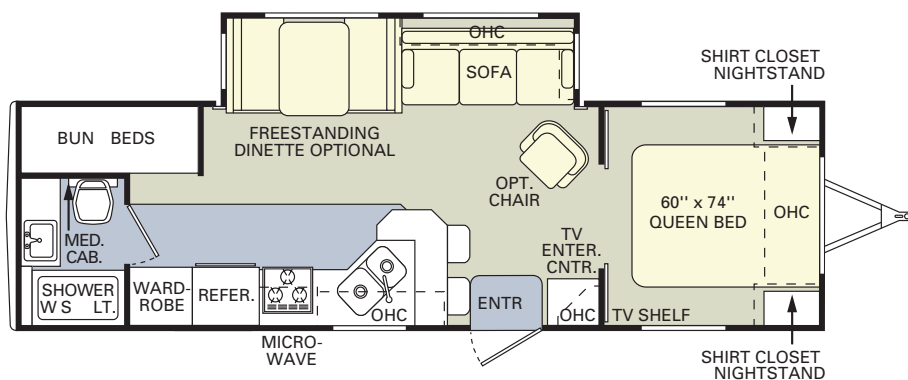


31CKS

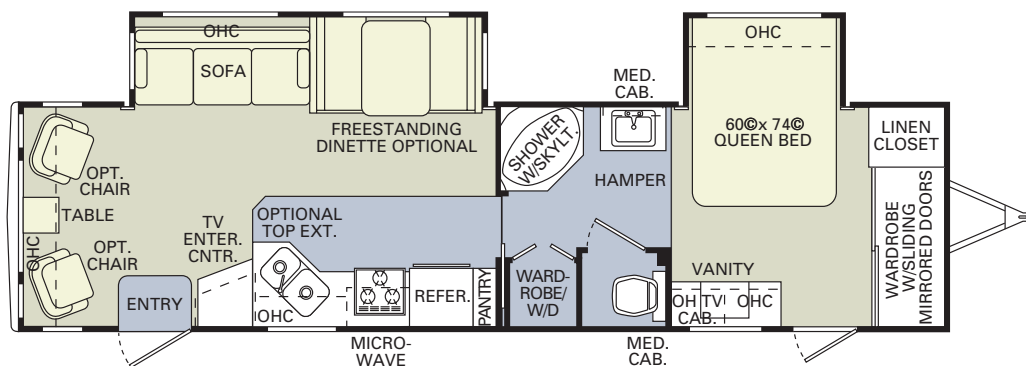


# ALUMASCAPE TRAVEL TRAILER FLOORPLANS

31SKS



34SKD



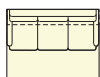
## OPTIONAL ITEMS:

CARPET

LINOLEUM



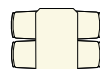
1 or 2 Swivel Barrel Chairs



Hide-A-Bed Sofa



1 or 2 Fabric/Vinyl Recliners



Freestanding Dinette with 4 Chairs



Twin Beds



Garden Tub



### NOW YOU'RE ON YOUR WAY.

THE MOMENT YOU TAKE TO THE ROAD IN A NEW HOLIDAY RAMBLER, YOU'LL KNOW WHAT IT MEANS TO BECOME PART OF A RICH, COLORFUL HERITAGE. BECAUSE FROM THAT MOMENT, YOU'RE INVITED TO JOIN US WHEREVER WE GATHER — AT



RALLIES AND EVENTS ACROSS THE COUNTRY. WHEN YOU PURCHASE A NEW HOLIDAY RAMBLER, YOU ARE ELIGIBLE TO RECEIVE A FREE ONE-YEAR MEMBERSHIP IN THE HOLIDAY RAMBLER CLUB. AND

TO KEEP YOU INFORMED OF ALL THE LATEST NEWS AND EVENTS, YOU'LL ALSO RECEIVE A SUBSCRIPTION TO OUR HOLIDAYS MAGAZINE. OUR WEBSITE ALSO PROVIDES VALUABLE INFORMATION AND IS A CONVENIENT WAY TO CONTACT US

ANYTIME. IN ADDITION, YOU ARE AUTOMATICALLY ENROLLED FOR ONE YEAR IN OUR OWNER ADVANTAGE PROGRAM. WITH THIS IMPRESSIVE ROADSIDE ASSISTANCE PACKAGE, MASTER CERTIFIED

RVDA TECHNICIANS AND ASE CERTIFIED TECHNICIANS ARE ON CALL 24 HOURS A DAY TO HANDLE ANY PROBLEMS YOU MAY EXPERIENCE WITH YOUR TOWABLE. THE OWNER ADVANTAGE

PROGRAM ALSO INCLUDES THE FOLLOWING BENEFITS: 24-HOUR ROADSIDE ASSISTANCE, FUEL DELIVERY, TIRE CHANGE, BATTERY JUMP START, LOCKOUT SERVICE, TRIP ROUTING AND MAPS, AND MUCH MORE.



[www.holidayrambler.com](http://www.holidayrambler.com)



HOLIDAY RAMBLER®

*This is Living®*

MONACO COACH CORPORATION

(800) 245-4778

Monaco is traded on the New York Stock Exchange under the listing MNC. © 2003, Monaco Coach Corporation 0603 NPN:BROHALM Litho in USA.

