

# 2001 SCEPTER SPECIFICATIONS

## Chassis/Engine/Suspension

### Standard Features

Raised Rail Roadmaster Chassis  
 Cummins 330 HP ISC Engine w/Fuel Injection  
 & Charged Air Allison MH 3000 Transmission  
 Torque (950 Lbs.-Ft. Max. Net at 1,400 RPM)  
 Cubic Inch Displacement (504.5/8.3L)  
 100 gal. Fuel Tank w/Single Fill  
 Alternator 160 Amps  
 Rear Axle Ratio 4.30:1  
 Full Air Suspension  
 Gas Shocks  
 Sheppard M100PMN31 Power Steering Box  
 Stainless Steel Wheel Liners  
 Radial Tires  
 Tire Size 275/70R/22.5  
 Tire Load Range H  
 Full Air Brakes (Drum) with Automatic Slack  
 Adjuster  
 Pac Brake  
 Engine Block Heater  
 Air Cleaner Restriction Indicator  
 10,000 lb. Hitch Receiver w/Six-Point Connector  
 Manual Hydraulic Leveling Jacks (Apt.)

### Options

Aluminum Wheels (4)

### Body Construction

#### Standard Features

Aluminum Superstructure  
 Steel Cage Cockpit Construction  
 Smooth Gel Coat Fiberglass Exterior Sidewalls  
 Fiberglass Roof with Fiberglass Insulation  
 Front & Rear Molded Fiberglass Caps  
 Integrated Fiberglass Front & Rear Bumpers  
 Steel Framed Floor on Steel Trusses  
 5/8" Sturdy-Wood Flooring, Laminated Floor  
 Soft Touch Padded Vinyl Ceiling  
 Underbelly with Block Foam Insulation  
 Exterior Entry Assist Handle  
 Retractable Underhood Utility Light  
 Exterior Painted Graphics  
 Mud Flaps  
 Exterior Polyethylene Storage Compartments  
 Aluminum Baggage Doors with Integrated  
 Single-Handle Latches  
 Rear Ladder  
 Undercoating

**Options**  
 Full Body Deluxe Paint  
 Slide-Out Storage Tray Compartment  
 (Full Pass Through)  
 Full Length Mud Flap  
 3M Front Film Mask

## Cockpit

### Standard Features

CD Player/Radio with Four Speakers  
 Stereo TV Wired Through Ceiling Speakers  
 Intermittent Windshield Wipers  
 Burlwood IP Panel  
 Pilot & Co-Pilot Map Lights  
 Screened Doors in Front O/H Cabinets  
 Adjustable Brake & Accelerator Pedals  
 Privacy Drape  
 Fog Lights  
 Power Steering  
 Audible Turn Signals  
 Vinyl Pilot/Co-Pilot Seats w/6-Way Power Pilot  
 Electronic Cruise Control  
 Air Powered Step Well Cover  
 12V & 110V Outlet in Cockpit Area  
 for Laptop Computers  
 Tilt and Telescopic VIP 18" Steering Wheel  
 Roof Mounted Air Horns  
 CB Prep with Antenna  
 Rear Vision Camera  
 Power Sunvisors  
 Color Coordinated Carpeted Floor Mats  
 Power Controlled Heated Chrome  
 Exterior Mirrors

### Options

Leather Faced Pilot and Co-Pilot Seat  
 Six-Way Power Co-Pilot Seat  
 Buddy Seat with Power Footrest  
 Home Theatre System  
 DVD Player  
 AM/FM Cassette (deletes CD)  
 10 Disc CD Changer

### Appliances & Accessories

#### Standard Features

Large Double Door Refrigerator  
 Raised Refrigerator Panel Inserts  
 High Output 3-Burner Cooktop w/Drawer  
 Flush Mounted Bi-fold Range Cover  
 Space Saver Convection Microwave  
 w/Touch Control and Range Hood  
 Systems Monitor Panel  
 Washer/Dryer Prep  
 TV Antenna and Booster  
 20" Stereo Color TV with Remote Control  
 (front centered)  
 13" Color TV with Remote Control (Bedroom)  
 Stereo VCR with Video Switching Box  
 Cable TV Hook-up & Telephone Jacks  
 Digital Satellite System – Pre-Wire

### Options

Four-Door Refrigerator w/Ice Maker  
 & Raised Panel Doors

Large Double Door Refrigerator w/Ice Maker  
 & Raised Panel Doors  
 Combination Washer/Dryer  
 Digital Satellite System – Fully Automatic  
 Recessed High-Output 3-Burner Range  
 w/Oven

### Interior

#### Standard Features

Stained Oak Hardwood Cabinetry  
 Solid Wood Square Raised Panel  
 Cabinet Doors  
 Flip-Up Hardwood Party Table  
 Cedar Lined Wardrobe  
 Solid Surface Kitchen Countertop  
 w/Stainless Steel Sink  
 Solid Surface Bath Countertop with  
 Integrated Sink  
 Low Friction Roller Drawer Guides  
 Full Length Dressing Mirror  
 Bathroom Mirror  
 Towel Bars in Bathroom  
 Sleeper Sofa with Drawer  
 Fixed Dinette Table with Two Chairs  
 Two Folding Wood Dinette Chairs  
 Fabric Swivel Barrel Chair  
 Day/Night Shades in Living Area & Bedroom  
 Mini Blinds in Bathroom & Kitchen  
 Nylon Carpeting and Pad in Bedroom &  
 Living Area  
 Ceramic Tile in Kitchen and Bathroom

### Options

Décor  
 (Royal Oak/Midnight Rose/Treasure Isle)  
 Hardwood Choices:Natural Oak,  
 Stained Cherry,Natural Cherry,  
 Walnut, & White Ash  
 Leather Faced Free Standing Recliner  
 Fabric Recliner  
 Computer Table (Requires Recliner) (N/A: 38PBD)  
 Bedroom Computer Desk  
 Curbside Leather Faced J-Lounge  
 w/Drawer (N/A: 38PBD)  
 Curbside Leather Faced Loveseat (N/A: 38PBD)  
 Booth Dinette with Drawer  
 Leather Faced Wonder Bed Sofa  
 Fabric Wonder Bed Sofa  
 Leather Faced Sleeper Bed with Drawer

### Electrical Systems and Lights

#### Standard Features

55 Amp 12V Power Converter (Electronic)  
 50 Amp 120V Distribution Panel and Cord  
 6.5 KW LP Generator With Manual  
 Slide-Out System  
 1,500W Inverter w/Two Additional  
 6V Batteries  
 Two 6V Deep Cycle Batteries  
 Battery Disconnect Switches  
 Recessed Side Docking Lights  
 Porch Light  
 Patio Receptacle  
 Entry Step Light  
 Bath Water Pump Switch  
 Two 3-Way Switches  
 (One at Entry & One at Bedroom)

Decorative Dining Light  
 Cosmetic Light in Bathroom  
 Decorative Lights in Living Area & Bedroom  
 Fluorescent Lights in Ceiling

## Options

Energy Management System  
 60 Watt Solar Panel  
 7.5 KW QD Diesel Generator

### Heating, Vents and Air Conditioning

#### Standard Features

Two 13.5M BTU Ducted Low Profile Roof A/C's  
 w/Ceiling Ducting and Heat Pump  
 Dash Heating and Air Conditioner System  
 w/Defroster  
 40M BTU Electronic Ignition Furnace  
 Wet Bay with 12V Heater  
 Ducted In Floor Heating System  
 Attic Fan in Kitchen  
 12V Roof Vent in Bath

### Options

Cold Weather Package  
 12V Attic Fan in Bathroom

### Plumbing and LP Systems

#### Standard Features

Demand Water System and Water Pump  
 Water Purifier in Kitchen  
 10 Gallon LP GAS/Elect Water Heater DSI  
 Water Pump Switch in Service Area  
 Water Heater By-pass Valve  
 Gravity or Pressurized Water Fill  
 One-Piece Fiberglass Shower  
 Glass Shower Door with Brass Frame  
 Decorative Kitchen and Bathroom Faucets  
 China Toilet  
 Insulated Systems Compartment with  
 Easy Access to Hook-Ups  
 No-Fuss Flush Holding Tank Rinsing System

### Option

Neo Angled Bath Tub

### Windows, Doors & Awnings

#### Standard Features

Slider Dual Pane Windows  
 Radius Front Entrance Door with Clear  
 Glass, Screen Door and Anti-Skid Steps  
 Tinted Skylight in Bathroom  
 Slide-Out Awning  
 Front Door Awning  
 Color Coordinated Acrylic Patio Awning  
 w/Metal Cover

### Options

Automatic Patio Awning  
 Window Awning(s)  
 (Only one available on double slide-outs)

### Safety

#### Standard Features

Fire Extinguisher  
 Deadbolt Lock on Entrance Door  
 120V GFI Protected Circuit (Kitchen, Bath, Exterior)  
 LP Gas Detector  
 Smoke Detector  
 Carbon Monoxide Detector  
 Driver and Passenger Three-Point Seat Belts (Lap  
 and Shoulder)  
 Third Brake Safety Light  
 Egress Window(s)

# INTRODUCING 2001 SCEPTER™ A NEW LEVEL OF REFINEMENT.



Measurements	40PBD	Tank Capacities	40PBD
Wheelbase	256"	<i>All Tank Capacities are Approximate. Actual "Usable Capacities" May Vary as a Result of Variances in Installation and Fabrication of the Tanks.</i>	
Overall Length	39' 8"	Water Heater	10 gal
Overall Height	12'	Grey Tank	60 gal
Interior Height	6' 6"	Black Tank	40 gal
Interior Width	94.5"	Fresh Tank	100 gal
Exterior Width (100.5" floor)	100.5"	Fuel Tank	100 gal
		LP Tank *	38 gal
<b>Weights</b>	<b>40PBD</b>	*Actual filled LP capacity is 80% of listing due to safety shut off required on tank.	
Gross Vehicle Wgt. Rating	32,800 lbs.		
Gross Combined Wgt. Rating	42,800 lbs.		
Front Gross Axle Wgt. Rating	12,800 lbs.		
Rear Gross Axle Wgt. Rating	20,000 lbs.		

Weights may vary by Option. Heights are base on static load equal to Gross Vehicle. Due to the large variety of options and floor plan arrangements available to our customers, actual weights for each unit can differ significantly. Holiday Rambler provides a weight sticker on each unit we produce which includes that unit's tank capacities and approximate weight. Consult your local Holiday Rambler dealer for unit availability and further information.

The information printed in this brochure reflects product design, fabrication, and component parts at the date of printing. The manufacturer reserves the right, at any time, to make changes in product design or material or component specifications at its sole option, without notice. This includes the substitution of components of a different brand or trade name which will result in comparable performance. All information printed in this brochure is subject to change after the date of printing. Some features shown or mentioned in this brochure are optional and may only be available in selected floor plans. Photographs may show props or decorations that are not standard equipment on Holiday Rambler models. Holiday Rambler, the HR logo and its design, are registered trademarks. All other products and company names are trademarks and/or registered trademarks of their respective holders.

While the color of the motor home's exterior and the interior fabrics depicted in this sales brochure are fair and reasonable depictions, the colors depicted may not be an exact match of the actual colors because of the variances in photo processing and variances caused by inserting the photographs within the sales brochure. Due to product improvements, changes during the model year and/or transcription errors that may occur, information represented within this brochure may not be accurate at the time of your purchase. If certain information is significant to your purchasing decision, please confirm the information with your dealer prior to submitting your order.



**HOLIDAY RAMBLER**  
*This is Living.*

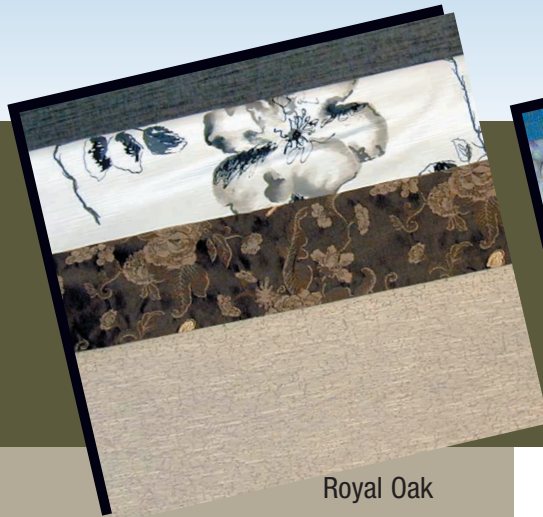
MONACO COACH CORPORATION  
 (800) 245-4778

Visit our Web site at [www.holidayrambler.com](http://www.holidayrambler.com)  
 Monaco is located on the New York Stock exchange under the listing MNC © 2000, Monaco Coach Corporation

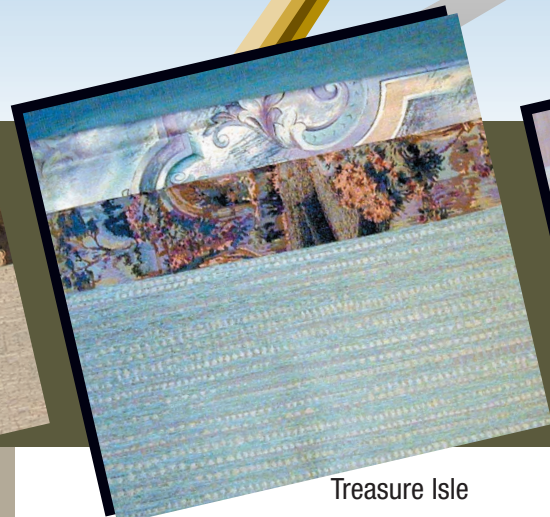


**HOLIDAY RAMBLER**  
*This is Living.*

# SCEPTER™



Royal Oak





Treasure Isle



Midnight Rose



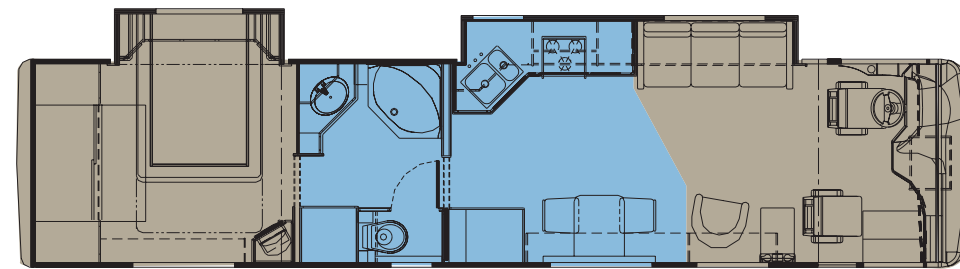
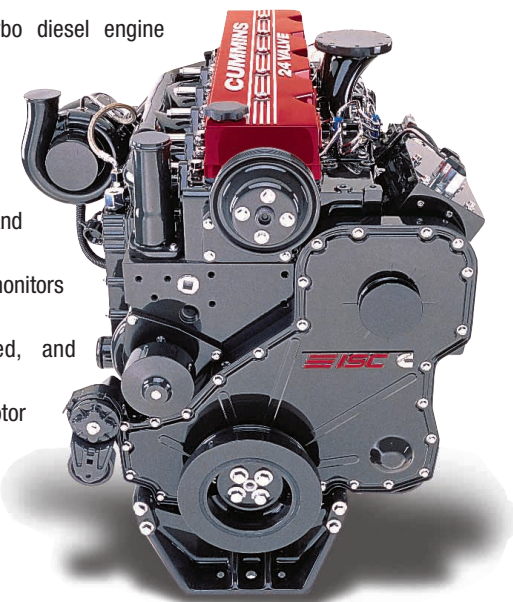
**Kitchen** – Amenities abound in the spacious kitchen. Two-way refrigerator. Space Saver Convection Microwave. High-output cook top with sealed burners and flush mount cover. Solid wood raised panel cabinet doors.

Carpet   
 Tile 

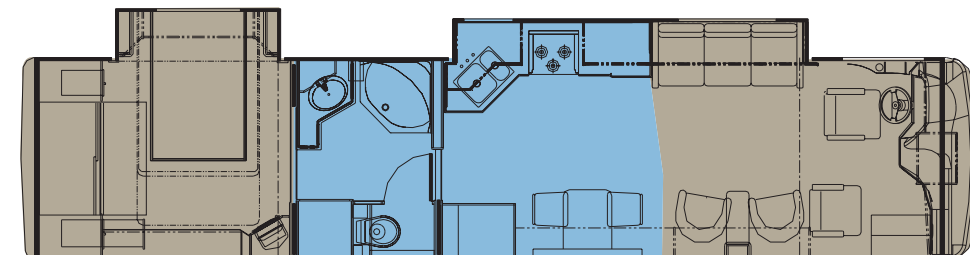
**Dash** – The automotive-style cockpit is loaded with features and designed for driving comfort. Easy to read gauges. Burlwood dash. Adjustable pedals. VIP telescoping steering wheel. Power heated exterior mirrors. A Sony® home theater and DVD system are optional.



The gutsy Cummins® ISC 8.3 liter, 350 hp turbo diesel engine combines advanced electronic engine controls, high-pressure fuel injection and heavy-duty components to give you power, fuel economy and reliability. Cummins' Interact System constantly monitors changes in temperature, pressure and speed, and coordinates functions between the engine and motor home systems to provide superior performance. A 370 hp ISL Cummins engine is optional.



38PBD



40PBD