

2 0 0 1 F I F T H W H E E L S

Presidential

INAUGURATING A NEW ERA OF ULTIMATE PRESTIGE.



HOLIDAY RAMBLER®

this is living

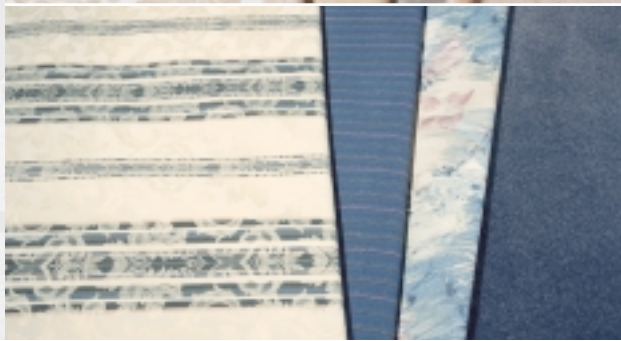
BELOW — In the living area you'll find high-end window treatments, the best cabinet work to be found in RVs from Nappanee Wood Products and space-expanding slide-outs. (Shown: 30SCD with Coral Coast decor and Walnut cabinetry.)



Mahogany



Coral Coast

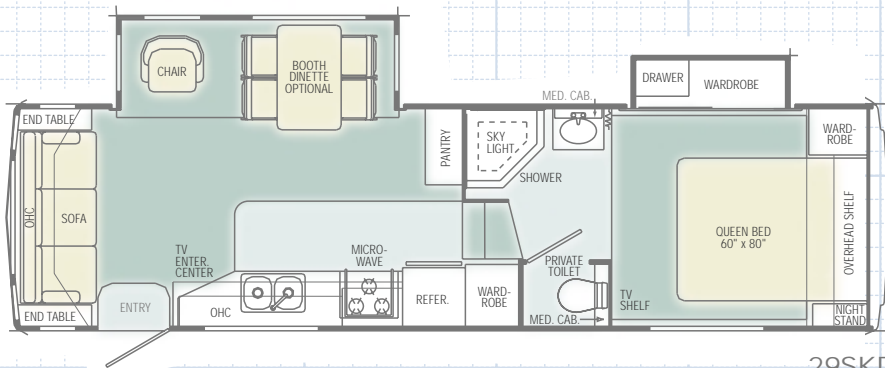


Sea View

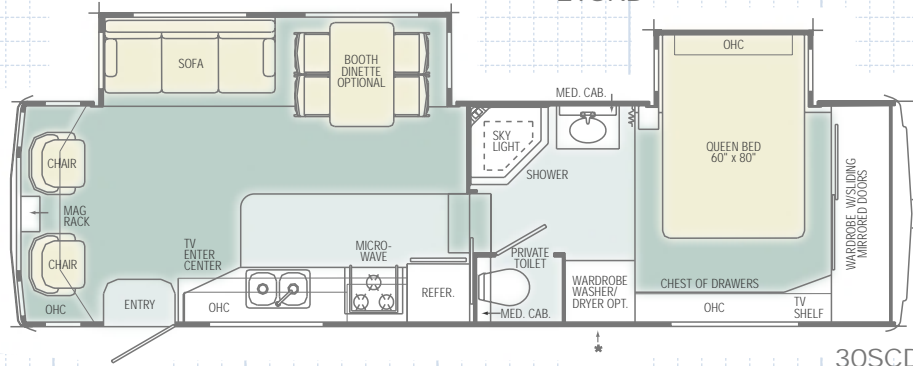


Emerald

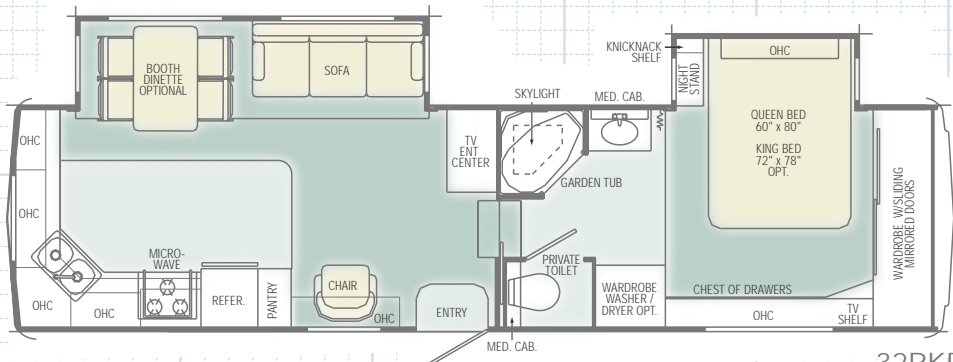
2001 PRESIDENTIAL™ Floor Plans



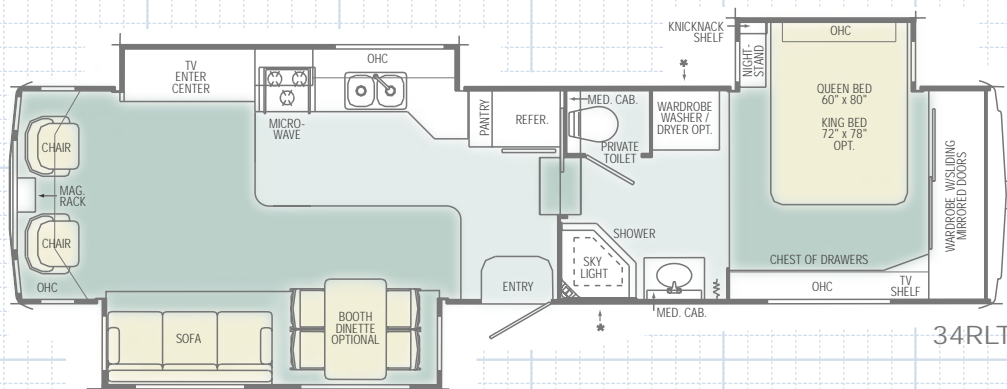
29SKD



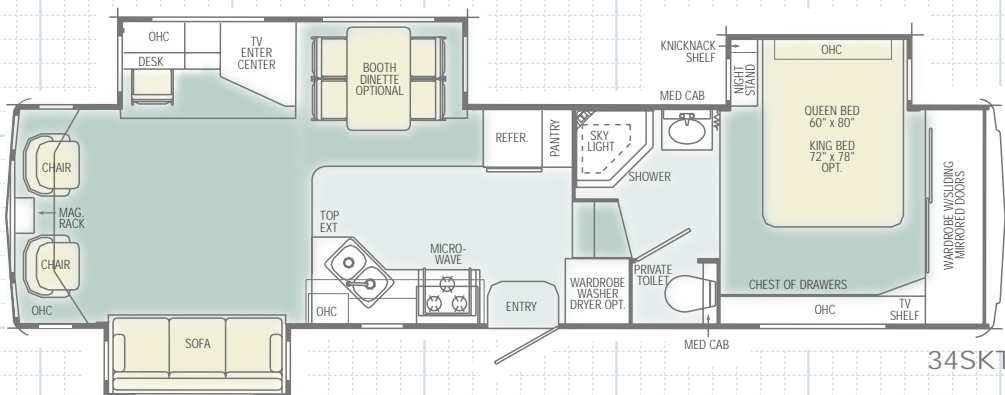
30SCD



32RKD



34RLT



34SKT

- Carpet
- Linoleum
- * Outside Storage

2001 Presidential™ SPECIFICATIONS

WEIGHTS	29SKD	30SCD	32RKD	34RLT	34SKT	35CKT	36SKT
Gross Vehicle Weight Rating (Lbs.)	12,500	12,500	13,250	14,250	14,250	14,250	14,250
Hitch Weight (Lbs.)	2,008	2,018	N/A	2,220	N/A	N/A	1,960
Axle(s) Weight (Lbs.)	5,200	5,200	6,000	6,000	6,000	6,000	6,000
Unloaded Vehicle Weight (Lbs.)	9,380	9,900	N/A	11,760	N/A	N/A	12,240
Net Carrying Capacity (NCC) (Lbs.)	3,120	2,600	N/A	2,490	N/A	N/A	2,010
Tire Size	16"	16"	16"	16"	16"	16"	16"
Tire Load Range	E	E	E	E	E	E	E

MEASUREMENTS

Overall Length	30' 9"	31' 5"	33'	36' 3"	35' 3"	36' 3"	37' 3"
Overall Height (Including A/C)	12' 4"	12' 6"	12' 6"	12' 6"	12' 6"	12' 7"	12' 7"
Exterior Width	98"	98"	98"	98"	98"	98"	98"

TANK CAPACITIES

All Tank Capacities are Approximate. Actual "Usable Capacity" May Vary as a Result of Variances in Installation and Fabrication of the Tanks.

Water Heater (Gal.)	6	6	6	6	6	6	6
Gray Tank (Gal.)	40	40	40/40	40/40	40/40	40/40	40/40
Black Tank (Gal.)	40	40	40	40	40	40	40
Fresh Tank (Gal.)	70	70	70	70	70	70	70
LP Tank (Gal.) (2)*	30	30	30	30	30	30	30

*Actual Filled LP Capacity is 80% of Listing Due to Safety Shut Off Required on Tank.



Due to the large variety of options and floor plan arrangements available to our customers, actual weights for each unit can differ significantly. Holiday Rambler provides a weight sticker in each unit we produce which includes that unit's tank capacities and approximate weight. Consult your local Holiday Rambler dealer for unit availability and further information.

The information printed in this brochure reflects product design, fabrication, and component parts at the date of printing. The manufacturer reserves the right, at any time, to make changes in product design or material or component specifications as its sole option, without notice. This includes the substitution of components of a different brand or trade name which will result in comparable performance. All information printed in this brochure is subject to change after the date of printing. Some features shown or mentioned in this brochure are optional and may only be available in selected floor plans. Photographs may show props or decorations that are not standard equipment on Holiday Rambler models.

Holiday Rambler, the HR logo and its design, are registered trademarks. All other products and company names are trademarks and/or registered trademarks of their respective holders.

While the color of the towable exteriors and the interior fabrics depicted in this sales brochure are fair and reasonable depictions, the colors depicted may not be an exact match of the actual colors because of the variances in photo-processing and variances caused by inserting the photographs within the sales brochure. Due to product improvements, changes during the model year and/or transcription errors that may occur, information represented within this brochure may not be accurate at the time of your purchase. If certain information is significant to your purchasing decision, please confirm the information with your dealer prior to submitting your order.

BODY AND FRAME CONSTRUCTION

Standard Features

Alumaframe® Superstructure
10-inch I-Beam Frame
Vinyl Exterior Graphics
Heavy Duty Side Metal Wrap
Two Wrap Storage Doors
Smooth Metal Sidewalls
Front Molded Fiberglass Cap
Rear Molded Fiberglass Cap with Integrated Bumper
3/8-inch Foam Core, Thermal Barrier
Laminated Sidewall Structure
Steel Frame Sub-Floor System
5/8-inch Structurewood Flooring
Enclosed Heated Underbelly with Side Wrap
10-Layer Aluminum Roof Structure with RV 2000 Roofing Material
Vapor Barrier in Roof
Soft Padded Vinyl Ceiling

Flat Floor Slide-Out Rooms

Large Trunk Storage Area
Battery Compartment
Tandem Axles with Electric Brakes

Shock Absorbers

Radial Tires
Stylized 16-inch Sport Wheels with Trim Rings and Chrome Center Cap

Front Power Landing Jacks

Spare Tire and Sport Wheel

with Carrier Under Frame

Snap Pins for Landing Jacks

Options

Gel Coat Fiberglass Sidewalls and Under Alcove
Scissor Jacks
Rear Ladder
Chrome Wheels

APPLIANCES

Standard Features

Large Double-Door Refrigerator
High Output Three-Burner Range/Oven
Bi-Fold Flushmount Range Cover
Systems Monitor Panel on Range Hood with 12V Fan (N/A: 34RLT)
TV Antenna and Booster with One-12V Receptacle and TV Jack(s)

APPLIANCES (cont.)

Standard Features

Cable TV/DSS/VCR Ready with Video Control Box

Microwave with Touch Control

Telephone Jacks in Kitchen, Bedroom and Computer Area

AM/FM Electronic Tune

Stereo with CD and Cassette (Four Speakers)

Wire Prep for VCR

Options

Large Double-Door Refrigerator with Ice Maker (N/A: 35CKT)

Four-Door Refrigerator with Ice Maker (N/A: 29SKD, 30SCD, 35CKT) (N/A with Roll-Out Pantry)

Four-Door Refrigerator without Ice Maker (35CKT) (N/A with Roll-Out Pantry)

27-inch Color TV with Remote Control in Living Area (Requires TV Swivel Base) (N/A: 29SKD, 30SCD)

20-inch Color TV with Remote Control in Living Area (Requires TV Swivel Base)

13-inch Color TV with Remote Control in Bedroom

TV Swivel Base (Required with Living Area TV Opt.)

Surround Sound Speaker System

DSS Dish with Stand

Washer/Dryer Prep with 50 amp Service (Requires 10 Gallon DSI Gas/Elec.

Water Heater) (N/A: 29SKD)

Vented Combination Washer/ Dryer (Requires Washer/ Dryer Prep) (N/A: 29SKD)

VCR



INTERIORS (cont.)

Standard Features

Solid Surface Bathroom Countertops
Laminate Bedroom Countertops
Color Matched Kitchen Sink Covers
Workstation with Keyboard Drawer and Chair (34SKT, 35CKT, 36SKT)
Clock
Kitchen Countertop Extension (34SKT, 35CKT, 36SKT)
Pantry with Adjustable Shelving (N/A with Four Door Refrigerator)

(N/A: 29SKD, 30SCD)

Hamper Under Washer/Dryer (Floor Plans that Washer/Dryers are Available) (N/A: 29SKD)

Lined Wardrobe(s)
TV Shelf in Bedroom

Decor Glass in Cabinet Doors

Slide-Out House Fascia Trim with Fabric Inserts

Dressing Mirror

Medicine Cabinet with Lights Above

Tip-Out Tray by Sink

Toilet Tissue Holders

Towel Racks on Bathroom Door

Carpeting and Pad in Living Area, Hallway and Bedroom

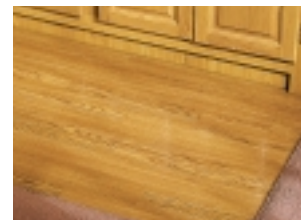
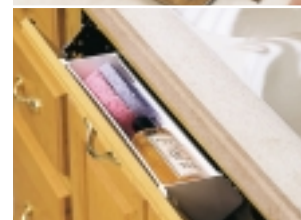
Linoleum in Bathroom, Kitchen and Entry

Decor Mirrors

Options

Colony Oak or Walnut Cabinets

Plank Floor in Kitchen and Entry



INTERIORS (cont.)**Options**

Raised Panel Insert for Refrigerator
 Designer Area Rug
 Roll-Out Pantry (N/A with Four Door Refrigerator) (N/A: 29SKD, 30SCD)

FURNITURE**Standard Features**

Bedroom Slide-Out with Chest of Drawers and Large Window (N/A: 29SKD)
 Free-Standing Dinette (Drop Leaf Table) with Four Chairs
 Wardrobe Slide-Out (29SKD)
 Bedspread
 Headboard

Easy-Bed Sleeper Sofa with Two Bolsters
 Swivel Barrel Chair(s) (One: 29SKD, 32RKD) (Two: 30SCD, 34SKT, 34RLT, 35CKT, 36SKT)

Desk Chair (34SKT, 35CKT, 36SKT)

Options

King Bed (N/A: 29SKD, 30SCD)
 Leather Hide-A-Bed Sofa with Two Throw Pillows (N/A: 29SKD)
 Hide-A-Bed Sleeper Sofa with Two Throw Pillows (N/A: 29SKD)
 Swivel Recliner (29SKD, 32RKD) (Two in 30SCD, 34SKT, 34RLT, 35CKT, 36SKT)
 Leather Mate Recliner (29SKD, 32RKD) (Two in 30SCD, 34SKT, 34RLT, 35CKT, 36SKT)
 Coffee Table
 Booth Dinette with Drawer

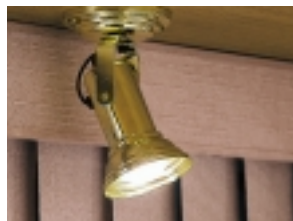
ELECTRICAL SYSTEMS AND LIGHTS**Standard Features**

Electrical Management System (30 amp 12V with 55 amp Conv.)
 Porch Light
 120V Exterior Receptacle
 Utility Service Light
 Entry Step Light
 Wardrobe Lights
 Hitch Light
 Trunk Light
 Decorative Dinette Light
 Decorative Living Room Light

Brass Swivel Lights in

Bedroom Slide-Out O/H's and Above Living Room Chairs

Cosmetic Light in Bathroom
 Battery Disconnect Switch

**ELECTRICAL SYSTEMS AND LIGHTS (cont.)****Standard Features**

Battery Box
 12V Incandescent Ceiling Lights

Options

Exterior Security Lights with Living Area and Bedroom Switch
 One 12V Deep Cycle Battery
 Two 12V Deep Cycle Batteries
 Generator Prep
 Solar Prep
 Fluorescent Ceiling Lights

PLUMBING AND LP SYSTEMS**Standard Features**

White Kitchen Sink with Single Lever Faucet
 Demand Water System with Water Pump
 6 Gallon LP Gas Water Heater with Electronic Ignition (DSI)
 Bathroom Sink with Double Handle Faucet
 Fiberglass One-Piece Shower
 Glass Shower Door

Outside Shower

Porcelain Toilet
 Two 30 Lb. LP Tanks with Automatic Changeover and Cover

Options

Water Heater By-Pass
 No-Fuss Flush Holding Tank Rinsing System
 6 Gallon LP Gas/Electric Water Heater with Electronic Ignition (DSI)
 10 Gallon LP Gas/Electric Water Heater with Electronic Ignition (DSI)
 Fold-Down Shower Seat (N/A: 32RKD, 35CKT)
 Water Filter System in Kitchen
 Fiberglass One-Piece Garden Tub (32RKD, 35CKT)

**SAFETY****Standard Features**

Fire Extinguisher
 Deadbolt Lock(s) on Entrance Door(s)
 120V GFI Protected Outlets in the Kitchen, Bathroom and Exterior
 Breakaway Switch

LP Gas Detector
 Smoke Detector
 Egress Window(s)
 Safety Glass

WINDOWS AND DOORS**Standard Features**

Tinted Radius Windows Safety Glass
 30-inch Radius Main Entrance Door with Anti-Skid Steps

Options

Tinted Skylight in Bathroom
 Acrylic Patio Awning with Cover
 Carefree Automatic Patio Awning (N/A: 34RLT, 34SKT, 36SKT)
 Acrylic Slide-Out Awning(s)
 Swing-Out Entry Door Handle (N/A: 29SKD, 30SCD, 34RLT, 36SKT)
 Dual Pane Windows

HEATING, VENTS AND AIR CONDITIONING**Standard Features**

30M BTU Hydroflame® Electronic Ignition Furnace (29SKD, 30SCD)
 35M BTU Hydroflame® Electronic Ignition Furnace (32RKD Only)
 40M BTU Hydroflame® Electronic Ignition Furnace (N/A: 29SKD, 30SCD, 32RKD)
 One DuoTherm® 13.5M BTU Air Conditioner with Ducted Air and Wall Thermostat
 In-Floor Ducted Heating System
 Manual Roof Vent

12V Roof Vent in Bathroom

Options

15.0M BTU Air Conditioner ILO 13.5M
 Second 13.5M BTU DuoTherm Air Conditioner ILO Vent (with Auto Energy Select Switch and 30 amp Service Only) (N/A: 29SKD, 30SCD)

12V Roof Vents

12V Attic Fan with Wall Switch

Ceiling Fan

**WINDOW TREATMENTS****Standard Features**

Living Room: Venetian Blinds, Padded Valances and Decorative Drapery Panels
 Kitchen: Venetian Blinds and Valance
 Bedroom: Venetian Blinds, Valances and Decorative Drapery Panels

Options

Pleated Day/Night Shades in Living Area and Bedroom