

2001

A D M I R A L TM

We Changed the Rules.



HOLIDAY RAMBLER[®]

This is Living.



ABOVE — Admiral's bus-like appearance and clean lines will command attention wherever you travel. And because it's a Holiday Rambler®, you can count on a superior level of luxury and sophistication.

RIGHT — Shown top to bottom: Western Oak cabinets are standard, Regal Cherry and Walnut are optional.

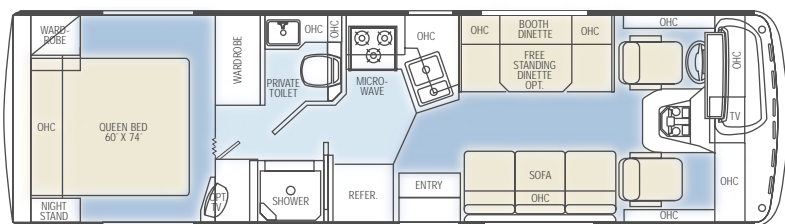
FAR RIGHT — Elegance and practicality are artfully combined for your enjoyment. Western Oak cabinets. Easy-bed sleeper sofa. Gorgeous window coverings and decorator touches. (Shown: 34PBD with Atlantis Blue decor.)

RIGHT — Decor choices are Rose Arbor, Sahara Tan and Atlantis Blue.



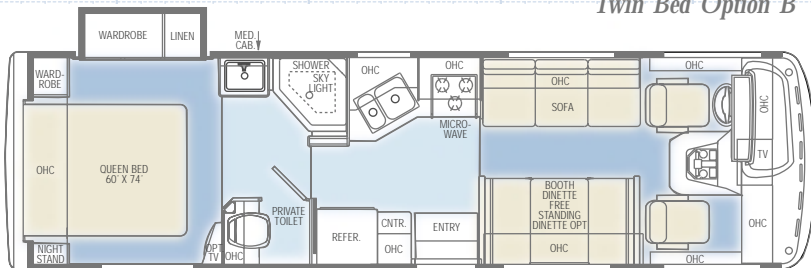
2001 ADMIRAL™ FLOOR PLANS

Linoleum
Carpet

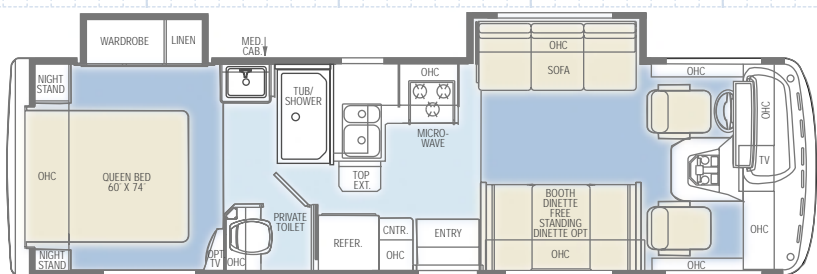


Twin Bed Option B

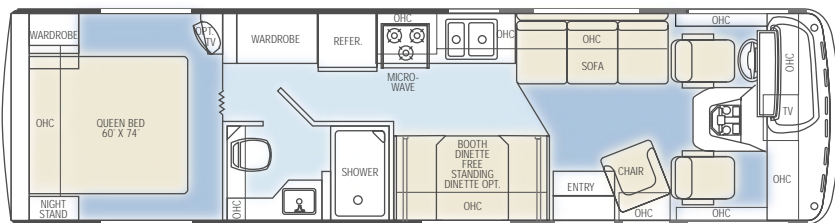
29W



30D

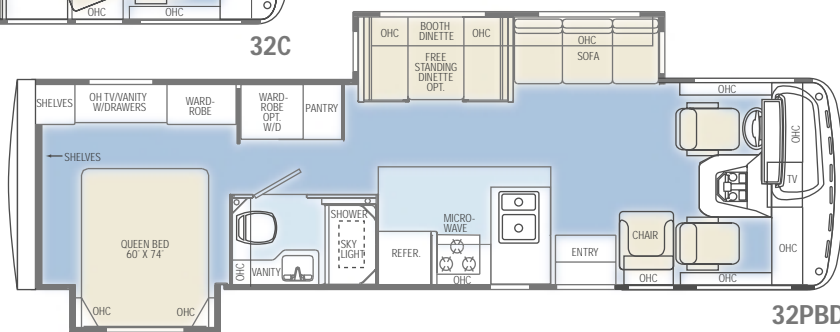


30PBD

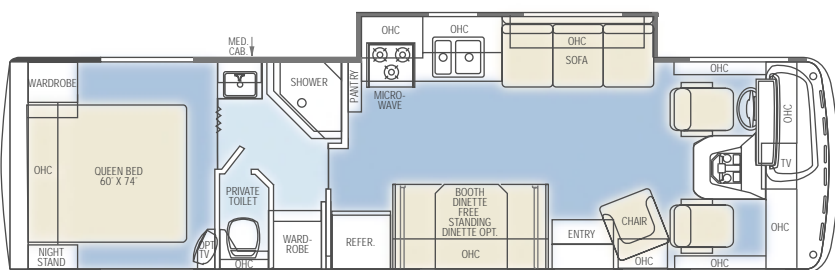


Twin Bed Option B

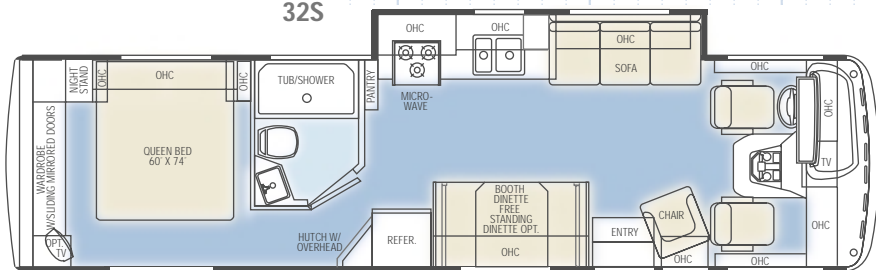
32C



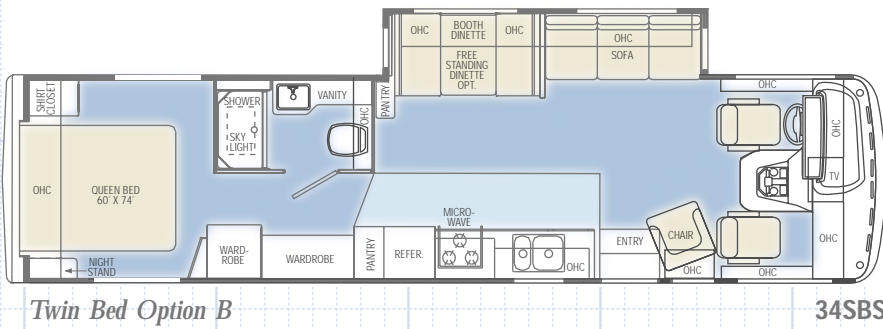
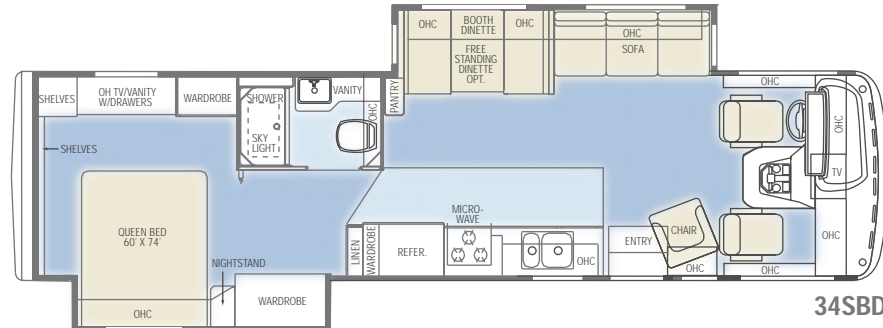
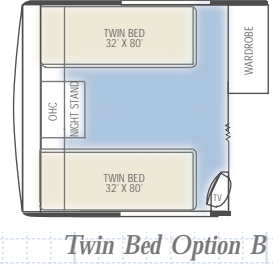
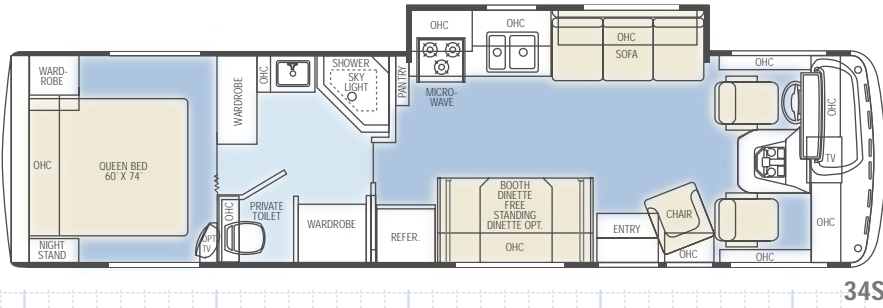
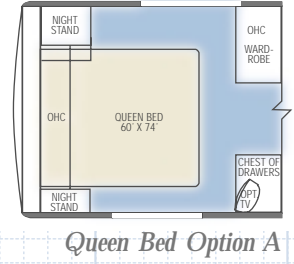
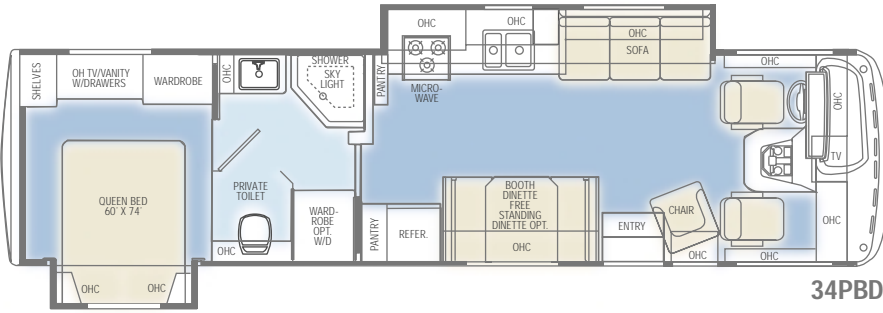
32PBD



32S

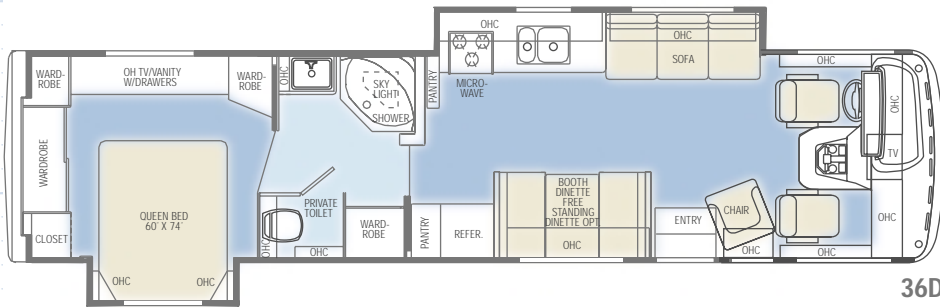


2001 ADMIRAL™ FLOOR PLANS

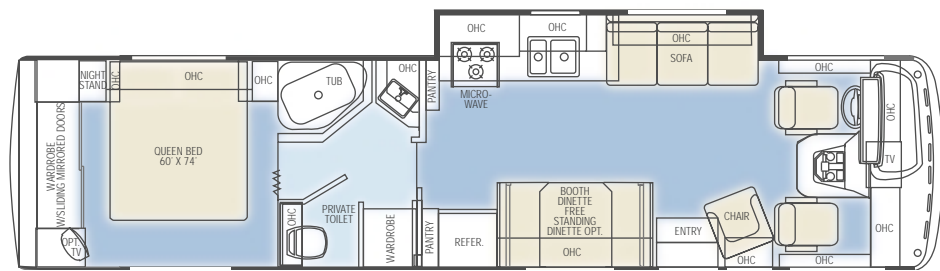


Rose Arbor (AR1N01 Rose Arbor interior)

Twin Bed Option B



Sahara Tan (AR2N01 Sahara interior)



Atlantis Blue (AR6N01 Atlantis interior)

2001 ADMIRAL™ SPECIFICATIONS, STANDARDS AND OPTIONS

BODY CONSTRUCTION

Standard Features

Alumaframe® Superstructure with Five-Year Limited Warranty
Aluminum Roof
Steel Cage Cockpit Construction
Aluminum Exterior Walls
Interior Paneling with 3/4-inch Insulation
Ozite Ceiling
Steel Framed Floor on Steel Trusses
One 1/2-inch Steel Tube with Laminated 5/8-inch Sturdi-Wood Flooring
Underbelly with Block Foam Insulation
One-Piece Polyethylene Storage Compartment with Pass-Through Storage
Exterior Storage Compartment Doors with Single Handle Latches
Rear Ladder
Exterior Assist Handle
Fiberglass Front and Rear Cap with Aluminum Front Bumper
Large Curved Aerodynamic Windshield
Large Single Headlamp with Turn Signal
Underhood Utility Light
Mud Flaps
Radius Entry Door with Deadbolt Latch
Spare Tire in Basement (N/A: 36D)
One-Piece Engine Access Door
Undercoating

BODY CONSTRUCTION (cont.)

Options

Hi-Gloss Gel Coat Sidewalls
Stainless Steel Wheel Simulators

COCKPIT

Standard Features

CD Player/Radio with Four Speakers
12V and 110V Outlet in Cockpit Area
Radius Windshield Wipers with Intermittent Wiper Control
Pilot and Co-Pilot Fabric Recliner Seats
Engine Cover Drink Tray
Fiberglass Automotive Soft Touch Dash
Multi-Position Sunvisors
Power Steering
Cruise Control
Tilt Steering Wheel
Floor Mats
Electric Automotive Horn
Power Heated Remote Mirrors
Rear Vision System Prep
Options
Six-Way Power Pilot Seat
Six-Way Power Co-Pilot Seat
CB Radio Prep
Dash Workstation
Rear Vision System

APPLIANCES AND ACCESSORIES

Standard Features

Large Double-Door Refrigerator
High Output Three-Burner Range, 17-inch Oven (Oven Optional on 29W, 30PBD, 32PBD)

APPLIANCES AND ACCESSORIES (cont.)

Standard Features

High Output Three-Burner Cooktop (29W, 30PBD, 32PBD)
Microwave with Touch Control (N/A: 32S, 34S, 34F, 34PBD, 36D, 36G, 36WDD)
Space Saver Microwave (32S, 34S, 34F, 34PBD, 36D, 36G, 36WDD)
Range Hood with 12V Fan (N/A: 34F, 34S, 34PBD, 36D, 36G, 36WDD)
Systems Monitor Panel
Cable TV Hook-Up and Telephone Jacks
TV Antenna and Booster with 12V Recept and TV Jacks
RCA 19-inch Stereo Color TV with Remote Control in Living Area
Options
Large Double-Door Refrigerator with Ice Maker
Four-Door Refrigerator with Ice Maker (34SBS, 34SBD, 34PBD, 36D, 36G, 36WDD)
Convection Microwave
Satellite Dish Prep (Includes Cable, Backer and Wire)
High Output Three-Burner Cooktop with Drawer (Standard on 29W, 30PBD, 32PBD)
RCA 13-inch Color TV with Remote Control (Bedroom)
VCR with Video Switching Box

APPLIANCES AND ACCESSORIES (cont.)

Options

Washer/Dryer Prep with 10 Gal. Water Heater (Requires 50 amp Service) (32PBD, 34PBD)
Combination Washer/Dryer (Requires Washer/Dryer Prep and 50 amp Service) (32PBD, 34PBD)

INTERIOR

Standard Features

Western Oak Cabinetry
Raised Panel Hardwood Doors
Telestrut Overhead Storage Doors and Positive Catches on all Other Doors
Low Friction Roller Drawer Guides
Laminate Kitchen and Bathroom Countertops
Medicine Cabinet
Kitchen Countertop Extension (29W, 30D, 32PBD)
Wood Drink Tray on Co-Pilot Side
Bedspread with Pillows
Towel Bar in Bathroom
Queen Bed Head-To-Rear with Shirt Closets and Nightstands (N/A: 32PBD, 34F, 34SBD, 34PBD, 36D, 36G, 36WDD)
Queen Bed Head-To-Side with Nightstands (N/A: 29W, 30D, 30PBD, 32C, 32S, 34S, 34SBS)
Easy-Bed Sleeper Sofa
Booth Dinette with Storage Doors
Brass Finished Cabinet Hardware
Sink Covers

Due to the large variety of options and floor plan arrangements available to our customers, actual weights for each unit can differ significantly. Holiday Rambler provides a weight sticker on each unit we produce which includes that unit's tank capacities and approximate weight. Consult your local Holiday Rambler dealer for unit availability and further information.

The information printed in this brochure reflects product design, fabrication, and component parts at the date of printing. The manufacturer reserves the right, at any time, to make changes in product design or material or component specifications as its sole option, without notice. This includes the substitution of components of a different brand or trade name which will result in comparable performance. All information printed in this brochure is subject to change after the date of printing. Some features shown or mentioned in this brochure are optional and may only be available in selected floor plans. Photographs may show props or decorations that are not standard equipment on Holiday Rambler models.

Holiday Rambler, the HR logo and its design, are registered trademarks. All other products and company names are trademarks and/or registered trademarks of their respective holders.

While the color of the motor home's exterior and the interior fabrics depicted in this sales brochure are fair and reasonable depictions, the colors depicted may not be an exact match of the actual colors because of the variances in photo-processing and variances caused by inserting the photographs within the sales brochure. Due to product improvements, changes during the model year and/or transcription errors that may occur, information represented within this brochure may not be accurate at the time of your purchase. If certain information is significant to your purchasing decision, please confirm the information with your dealer prior to submitting your order.

FORD CHASSIS/ENGINE/SUSPENSION (N/A: 30PBD)

Electronic Fuel Injection Gasoline Engine: 6.8L V10
Cubic Inch Displacement: 415
Automatic Transmission with Overdrive: 4-Speed
Fuel Tank Capacity: 75 Gal.
Alternator: 130 amps
Rear Axle Ratio: 5.38:1
5000 Lb. Hitch Receiver with Six-Point Connector
Stainless Steel Wheel Covers
Radial Tires
Wheel and Tire Size 245/70RX19.5F
Auxiliary Start Circuit

Options

Four-Point Hydraulic Levelers

WORKHORSE CHASSIS/ENGINE/SUSPENSION (30D, 30PBD)

Electronic Fuel Injection Gasoline Engine: 7.4L V8
Cubic Inch Displacement: 454
Automatic Transmission with Overdrive: 4-Speed
Fuel Tank Capacity: 60 Gal.
Alternator: 124 amps
Rear Axle Ratio: 4.63:1
3000 Lb. Hitch Receiver with Six-Point Connector
Stainless Steel Wheel Covers
Radial Tires
Wheel and Tire Size 225/70RX19.5F
Auxiliary Start Circuit

Options

Four-Point Hydraulic Levelers

WEIGHTS (FORD CHASSIS)

Gross Vehicle Weight Rating (Lbs.)
Gross Combined Weight Rating (Lbs.)
Front Gross Axle Weight Rating (Lbs.)
Rear Gross Axle Weight Rating (Lbs.)

WEIGHTS (WORKHORSE CHASSIS)

Gross Vehicle Weight Rating (Lbs.)
Gross Combined Weight Rating (Lbs.)
Front Gross Axle Weight Rating (Lbs.)
Rear Gross Axle Weight Rating (Lbs.)

MEASUREMENTS

Wheelbase
Overall Length
Overall Height
Interior Height
Interior Width
Exterior Width

TANK CAPACITIES

Water Heater (Gal.)
Gray Tank (Gal.)
Black Tank (Gal.)
Fresh Tank (Gal.)
LP Tank (Gal.)*

2001 ADMIRAL™ SPECIFICATIONS, STANDARDS AND OPTIONS

INTERIOR (cont.)

Standard Features

Entry Rail (Oak and Brass) on Free-Standing Dinette (N/A: 34SBS, 34SBD)
 Mini Blinds in Kitchen and Bathroom
 Window Lambrequins
 One-Piece Fiberglass Tub/Shower
 Barrel Chair (N/A: 29W, 30D, 30PBD)
 Nylon Carpeting and Pad in Living Area, Hallway and Bedroom
 Linoleum Floor in Kitchen (N/A: 32S, 34S, 34F, 34PBD, 36D, 36G, 36WDD)
 Nylon Carpeting in Kitchen (32S, 34S, 34F, 34PBD, 36D, 36G, 36WDD)
 Linoleum Floor in Bathroom
Options
 Wood Choice: Regal Cherry or Walnut Cabinets
 Wilsonart Flooring in the Kitchen
 Dinette Table with Two Free-Standing Chairs and Two Folding Chairs
 Twin Beds (29W, 32C, 34S, 34SBS, 36G)
 Queen Bed Head-To-Rear with Shirt Closets and Night Stands (34F, 36G)

ELECTRICAL SYSTEMS AND LIGHTS

Standard Features

55 amp Electronic 12V Power Converter
 Two 6V Deep Cycle Batteries
 Battery Disconnect Switches (House and Coach)

ELECTRICAL SYSTEMS

AND LIGHTS (cont.)

Standard Features

30 amp 120V Distribution Panel and Cord (Automatic Energy Select Switch Only if 2nd Air Conditioner is Opt.)
 Porch Light
 Patio Receptacle
 Lights in Outside Storage Compartments
 12V Incandescent Lights in Ceiling
 Cosmetic Light in Bathroom
 Power Entry Step with Light
 Onan® 5.0 KW Generator
 18-inch Fluorescent Ceiling with Dual Bulb in Living Area Only
 VCR Prep

Options

Energy Management System with 50 amp Service
 50 amp Service
 Onan® 5.5 KW Emerald Generator

PLUMBING AND LP SYSTEMS

Standard Features

Stainless Steel Kitchen Sink with Single Lever Faucet
 Demand Water System and Water Pump
 6 Gal. LP Gas/Electric Water Heater with Electronic Ignition (DSI)
 Water Heater By-Pass Valve
 Gravity or Pressurized Water Fill
 Glass Shower Door with Brass Frame
 Toilet with Sprayer

PLUMBING AND LP SYSTEMS (cont.)

Standard Features

Insulated Systems Compartment
Options
 Water Purifier
 Neo Angled Bath Tub (N/A: 29W, 32C, 32PBD, 34F, 34SBS, 34SBD, 36G)
 10 Gal. Gas/Electric Water Heater (DSI) (N/A: 30D, 30PBD, 34F)

SAFETY

Standard Features

Fire Extinguisher 10BC
 Deadbolt Lock on Entrance Door
 LP Gas Detector
 120V GFI Protected Circuit (Kitchen, Bathroom, Exterior)
 Smoke Detector
 Carbon Monoxide Detector
 Driver and Passenger Three-Point Seat Belts (Lap and Shoulder)
 Third Brake Safety Light
 Egress Window(s)

WINDOWS, DOORS AND AWNINGS

Standard Features

Tinted Dual Pane Sliding Windows
 Radius Entrance Door with Screen Door
 Awning Rail
 Tinted Skylight in Bathroom

Options

Acrylic Patio Awning with Brushed Aluminum Arms

WINDOWS, DOORS

AND AWNINGS (cont.)

Options

Automatic Patio Awning
 Day/Night Pleated Shades in Living Area and Bedroom

HEATING, VENTS AND

AIR CONDITIONING

Standard Features

One 13.5M BTU Air Conditioner with Ducted Air and Analog Wall Thermostat (N/A: 36D, 36G, 36WDD)
 31M BTU Electronic Ignition Furnace (29W, 30D, 30PBD, 32C, 32S)
 35M BTU Electronic Ignition Furnace (32PBD, 34F, 34S, 34SBS, 34SBD, 34PBD, 36D, 36G, 36WDD)
 In-Floor Ducted Heating System
 Dash Heating and Air Conditioner System with Defroster (Stack Coils)
 Wet Bay with 12V Heater
 12V Roof Vent in Bathroom

Options

Two Air Conditioners with Ducted Air and Wall Thermostat (One 13.5M BTU and One 11.0M BTU) (STD in 36D, 36G, 36WDD) (N/A: 29W)
 Two 13.5M BTU Air Conditioner (36D, 36G, 36WDD)
 Cold Weather Package
 12V Attic Fan

| 29W | 30D | 30PBD | 32C | 32PBD | 32S | 34F | 34S | 34PBD | 34SBD | 34SBS | 36D | 36G | 36WDD |
|--------|--------|-------|--------|--------|--------|--------|--------|--------|--------|--------|--------|--------|--------|
| 18,000 | 18,000 | N/A | 20,500 | 20,500 | 20,500 | 20,500 | 20,500 | 20,500 | 20,500 | 20,500 | 20,500 | 20,500 | 20,500 |
| 23,000 | 23,000 | N/A | 25,500 | 25,500 | 25,500 | 25,500 | 25,500 | 25,500 | 25,500 | 25,500 | 25,500 | 25,500 | 25,500 |
| 7,000 | 7,000 | N/A | 7,000 | 7,000 | 7,000 | 7,000 | 7,000 | 7,000 | 7,000 | 7,000 | 7,000 | 7,000 | 7,000 |
| 11,000 | 11,000 | N/A | 13,500 | 13,500 | 13,500 | 13,500 | 13,500 | 13,500 | 13,500 | 13,500 | 13,500 | 13,500 | 13,500 |

| | | | | | | | | | | | | | |
|-----|--------|--------|-----|-----|-----|-----|-----|-----|-----|-----|-----|-----|-----|
| N/A | 18,000 | 18,000 | N/A | N/A | N/A | N/A | N/A | N/A | N/A | N/A | N/A | N/A | N/A |
| N/A | 21,000 | 21,000 | N/A | N/A | N/A | N/A | N/A | N/A | N/A | N/A | N/A | N/A | N/A |
| N/A | 6,000 | 6,000 | N/A | N/A | N/A | N/A | N/A | N/A | N/A | N/A | N/A | N/A | N/A |
| N/A | 12,000 | 12,000 | N/A | N/A | N/A | N/A | N/A | N/A | N/A | N/A | N/A | N/A | N/A |

| | | | | | | | | | | | | | |
|---------|---------|------|---------|---------|---------|---------|---------|---------|---------|---------|---------|---------|---------|
| 190" | 190" | 190" | 208" | 208" | 208" | 228" | 228" | 228" | 228" | 228" | 238" | 228" | 228" |
| 29' 10" | 30' 11" | N/A | 32' 8" | 32' 8" | 32' 8" | 34' 10" | 34' 10" | 34' 10" | 34' 10" | 34' 10" | 36' 6" | 36' 6" | 36' 6" |
| 11' 8" | 11' 8" | N/A | 11' 8" | 11' 8" | 11' 8" | 11' 8" | 11' 8" | 11' 8" | 11' 8" | 11' 8" | 11' 8" | 11' 8" | 11' 8" |
| 6' 6" | 6' 6" | N/A | 6' 6" | 6' 6" | 6' 6" | 6' 6" | 6' 6" | 6' 6" | 6' 6" | 6' 6" | 6' 6" | 6' 6" | 6' 6" |
| 94-1/2" | 94-1/2" | N/A | 94-1/2" | 94-1/2" | 94-1/2" | 94-1/2" | 94-1/2" | 94-1/2" | 94-1/2" | 94-1/2" | 94-1/2" | 94-1/2" | 94-1/2" |
| 100.5" | 100.5" | N/A | 100.5" | 100.5" | 100.5" | 100.5" | 100.5" | 100.5" | 100.5" | 100.5" | 100.5" | 100.5" | 100.5" |

All Tank Capacities are Approximate. Actual "Usable Capacity" May Vary as a Result of Variances in Installation and Fabrication of the Tanks.

| | | | | | | | | | | | | | |
|------|------|------|------|------|------|------|------|------|------|------|------|------|------|
| 6 | 6 | 6 | 6 | 6 | 6 | 6 | 6 | 6 | 6 | 6 | 6 | 6 | 6 |
| 43 | 45 | 45 | 45 | 45 | 45 | 45 | 45 | 45 | 45 | 45 | 45 | 45 | 45 |
| 45 | 45 | 45 | 45 | 45 | 45 | 45 | 45 | 45 | 45 | 45 | 45 | 45 | 45 |
| 70 | 55 | 55 | 67 | 67 | 67 | 67 | 67 | 67 | 67 | 67 | 55 | 70 | 55 |
| 32.9 | 32.9 | 32.9 | 32.9 | 32.9 | 32.9 | 32.9 | 32.9 | 32.9 | 32.9 | 32.9 | 32.9 | 32.9 | 32.9 |

*Actual Filled LP Capacity is 80% of Listing Due to Safety Shut Off Required on Tank.