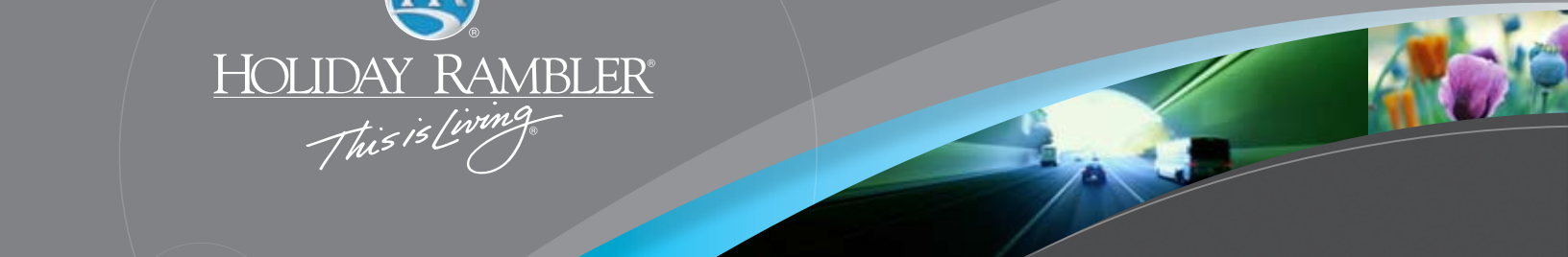


ARISTA®  
2008



HOLIDAY RAMBLER®

*This is Living®*

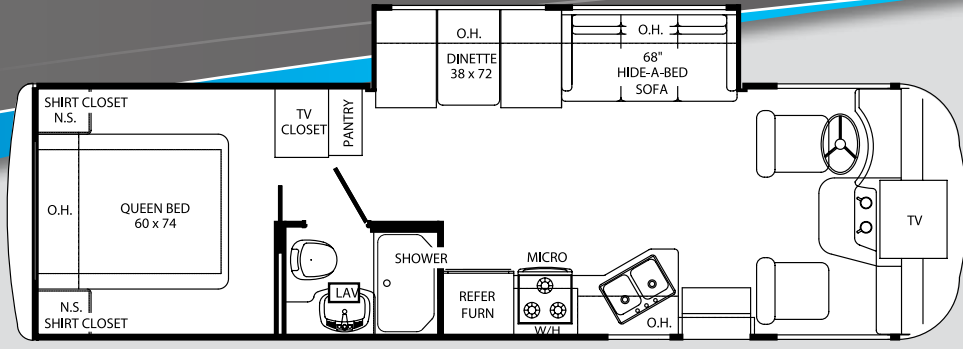




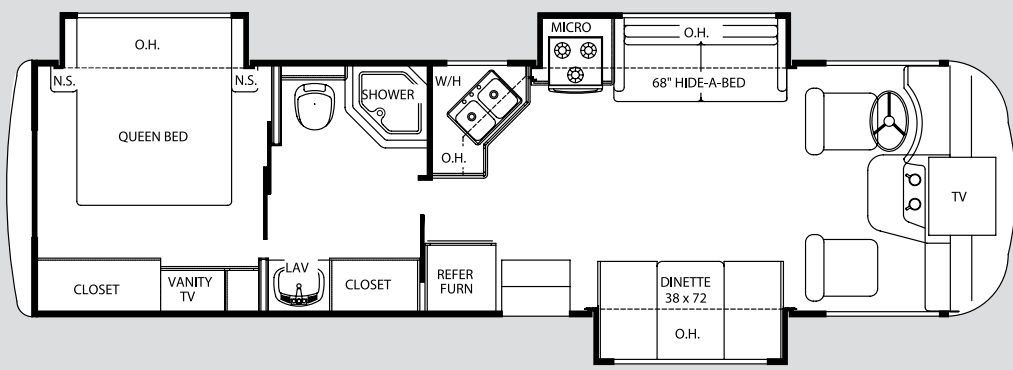
*This is Living®*







300



310

Weights*	300	310	315	321	330	340
<b>Workhorse Chassis - 8.1L Vortec (V8)</b>						
Gross Vehicle Weight Rating	16,000	18,000	18,000	18,000	21,200	21,200
Gross Combined Weight Rating	22,000	22,000	22,000	22,000	26,000	26,200
<b>Ford Chassis-6.8L Triton (V-10)</b>						
Gross Vehicle Weight Rating	16,000	18,000	18,000	18,000	20,500	20,500
Gross Combined Weight Rating	TBD	TBD	TBD	TBD	25,500	25,500
<b>Measurements</b>						
Wheel Base	190"	190"	190"	190"	208"	208"
Overall Length (w/o ladder) Workhorse	22' 11"	28' 1"	29' 11"	31' 2"	TBD	31' 3"
Overall Length (w/o ladder) Ford	22' 2"	27' 4"	29' 2"	30' 5"	TBD	31' 3"
Overall Height (w/ air conditioner)	10' 8"	10' 8"	10' 8"	10' 8"	10' 8"	10' 8"
Interior Height	80"	80"	80"	80"	80"	80"
Overall Width	99"	99"	99"	99"	99"	99"
Awning Size	14'	18'	18'	18'	18'	18'
<b>Tank Capacities</b>						
Fuel (Gallons)	75	75	75	75	75	75
LPG (Pounds)	68	68	68	68	68	68
Fresh Water	50	50	50	50	50	50
Waste Water (Gallons)	40	40	40	40	40	40
Gray Water (Gallons)	40	40	40	40	40	40
Water Heater (Gallons)	6	6	6	6	6	6
Furnace (BTU's)	35,000	35,000	35,000	35,000	35,000	35,000

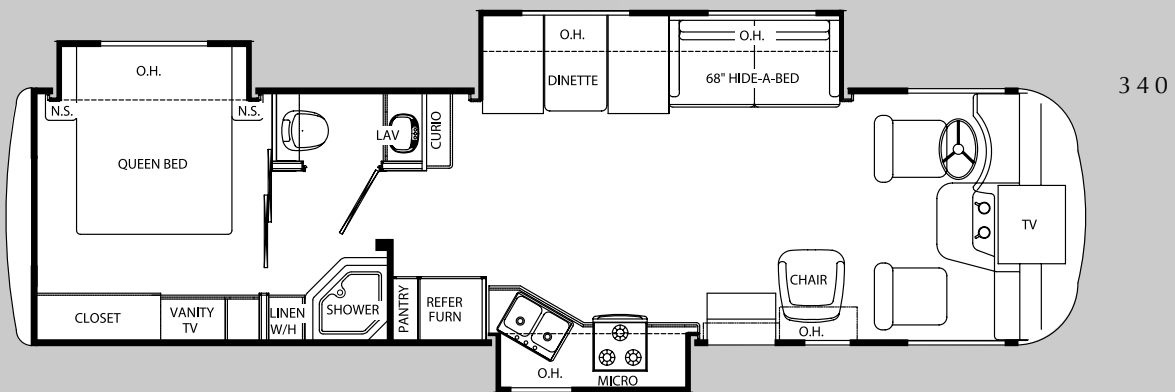
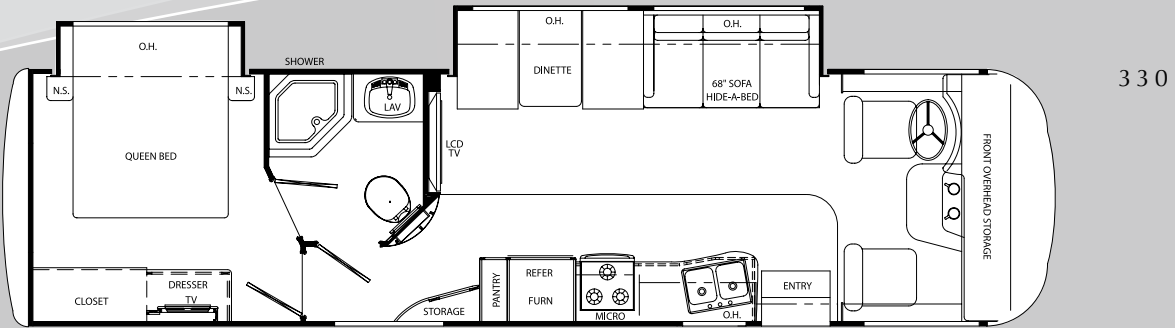
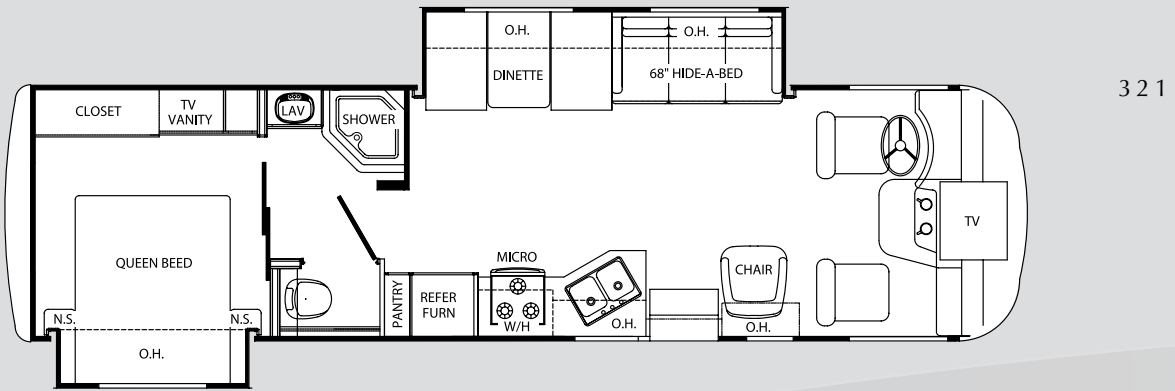
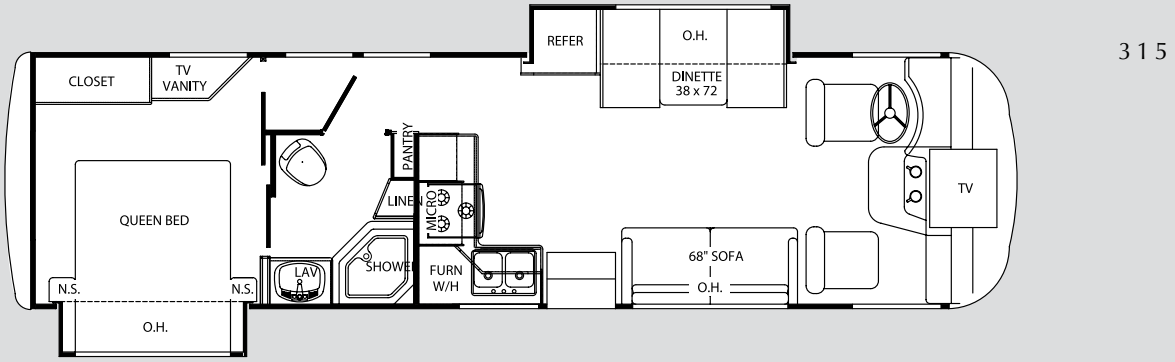
\* Weights may vary by options.

\*\* Tank manufacturer's listed water capacity (WC). Actual filled LP capacity is 80% of listing due to safety shut off required on tank.

1 Towing capacity is limited by GCWR; your vehicle's towing capacity is the difference between the GCWR and the actual vehicle weight, including all water, fuel, passengers and cargo. Your towed vehicle should be equipped with auxiliary brakes if the weight of the towed vehicle exceeds 1,000 lbs. Consult your owner's manual for further towing information.  
 2 All tank capacities are estimated based upon calculations provided by the tank manufacturers and represent approximate capacities. The actual "usable capacity" may be greater or less than the estimated capacities based upon fabrication and installation of the tanks.  
 3 Actual filled LP capacity is 80% of listing due to safety shut-off required on tank.  
 The actual overall length of the recreational vehicle may differ from that

indicated in the brochure due to variances in the manufacturing process and/or installed components. The actual length may be greater or less than that indicated. Due to the large variety of options and floorplan arrangements available to our customers, actual weights for each unit can differ significantly. Monaco Coach provides a weight sticker on each unit we produce which includes that unit's tank capacities and approximate weight. Consult your local Monaco Coach dealer for unit availability and further information. The information printed in this brochure reflects product design, fabrication, and component parts at the date of printing. The manufacturer reserves the right, at any time, to make changes in product design or material or component specifications as its sole option, without notice. This includes the substitution of components of a different brand or trade name which will result in comparable performance. All information printed in this brochure is subject to change after the date of printing. Some features shown or mentioned in this brochure are optional and may only be available in selected floorplans. Photographs may show props or decorations that are not standard equipment on Monaco Coach models. Monaco Coach, the Monaco logo and its design, are registered trademarks. All other

products and company names are trademarks and/or registered trademarks of their respective holders. While the color of the motorhome's exterior and the interior fabrics depicted in this sales brochure are fair and reasonable depictions, the colors depicted may not be an exact match of the actual colors because of the variances in photoprocessing and variances caused by inserting the photographs within the sales brochure. Due to product improvements, changes during the model year and/or transcription errors that may occur, information represented within this brochure may not be accurate at the time of your purchase. If certain information is significant to your purchasing decision, please confirm the information with your dealer prior to submitting your order. Component part and appliance manufacturers issue limited warranties covering those portions of the recreational vehicle not covered by the Limited Warranties issued by Monaco Coach Corporation. To learn which specific component parts and appliances are excluded from the Limited Warranties issued by Monaco Coach Corporation, please contact your selling dealership or Monaco Coach Corporation directly, or review the warranty packet inside the recreational vehicle.



### EXTERIOR: FEATURES

- Tubular aluminum welded sidewalls, roof and floor
- Laminated roof, floor, and walls with high-density block foam insulation
- Air conditioning duct work molded into roof insulation
- Automatic electric entrance step
- In floor rigid heat duct
- Fiberglass exterior sidewalls
- Exterior utility center (N/A on 300, 310 and 315)
- Exterior shower (opt. on 300, 310 and 315)
- Rubber roof
- Automatic hydraulic leveling jacks (opt. on 300, 310 and 315)
- Patio awning and slide-out awnings
- Roof ladder

### OPTIONS

- Lower paint
- Exterior shower (std. on 321 and 340)

### AUTOMOTIVE: FEATURES

- 5,000 lb. trailer hitch
- Wood grain dash kit
- Dash fans
- Deluxe exterior mirrors
- One-piece fiberglass front and rear caps
- Fog lights
- AM/FM/CD/Cass radio/ weatherband and SIRIUS® satellite ready
- Stainless steel wheel liners with valve extenders
- 23" LCD TV with HD Tuner and Mounting Bracket

### OPTIONS

- Ultra™ Leather driver and passenger captains chairs
- Six way power driver's seat
- Back-up monitor
- Heated, remote exterior mirrors
- Spare tire and rim (N/A on 340)

### INTERIOR: FEATURES

- Residential linoleum (entry way, galley and bath)
- Large metal entry grab handle
- 13,500 BTU roof air conditioner-front
- Mortise and tenon raised panel overhead cabinet doors
- Brushed nickel finish hardware
- Mini blinds throughout
- Soft touch vinyl ceiling (N/A on 300, 310 and 315)
- Hard vinyl ceiling (N/A on 321 and 340)
- Fabric hide-a-bed sofa (N/A on 315)
- Overhead lights in living room

### OPTIONS

- 13,500 BTU rear roof air conditioner (requires 50 amp service and 5500 watt generator)
- Decors: Honeycomb II, Tabasco
- Day/night shades throughout
- Fantastic fan-living area
- Thermal pane windows

- Ultra™ Leather hide-a-bed sofa (N/A on 315)
- Fabric sofa with pedestal table in place of dinette (310 Only)
- Ultra™ Leather sofa with pedestal table in place of dinette (310 Only)
- Ultra™ Leather sofa (315 Only)
- Fabric recliner in place of barrel chair (N/A on 300, 310 and 315)
- Ultra™ Leather recliner in place of barrel chair (N/A on 300, 310 and 315)

### GALLEY: FEATURES

- Double door refrigerator
- 3-burner high output gas range with oven
- Microwave oven
- Laminate countertops
- Large stainless steel double bowl sink
- Slide-out pantry (N/A on 300, 310 and 315)
- Full extension metal drawer guides

### OPTIONS

- Half-Time microwave oven with 3 burner range top

**ENTERTAINMENT: FEATURES**

- Cable television and satellite prep
- 24" color television in front overhead (N/A 300, 310 and 315)
- 20" color television in front overhead (N/A on 321, 330 and 340)
- 20" color television in bedroom (N/A 300, 310 and 315)
- Television cabinet-bedroom

**OPTIONS**

- Surround sound home theater system
- Exterior entertainment center with CD player
- 14" color television-bedroom (N/A on 321, 330 and 340)
- DVD player
- Satellite dish

**BEDROOM & BATHROOM: FEATURES**

- Inner spring mattress
- Bedspread and pillow shams
- Vanity with stool (N/A on 300 and 315)
- China bowl toilet
- Power bath vent
- Skylight in shower
- Neo-angled shower with glass door (N/A on 300)

**SAFETY: FEATURES**

- Entry door with deadbolt lock
- Smoke, LPG, and carbon monoxide detectors
- Fire extinguisher
- Three-point seat belts
- Seat belts throughout

**ELECTRICAL SYSTEMS: FEATURES**

- Guardian RV Quietpack® 40G (3600 watt) generator (1 A/C only) (N/A on 321, 330 and 340)
- Guardian RV Quietpack® 55G (5500 watt) generator (N/A on 300, 310 and 315)
- 30-amp service
- Marine-style detachable power cord
- 6-gallon gas water heater
- Water heater bypass kit
- Battery disconnect
- Emergency start switch
- "Command Central" systems control switch/monitor panel

**OPTIONS**

- 50 amp service/gas elect Water Heater (5.5 gen. required)
- Onan Microquiet™ 4000 (4000 watt) generator (N/A on 321, 330 and 340)
- Guardian RV Quietpack® 55G (5500 watt) generator
- Onan RV Marquis Gold (5500 watt) generator
- Second auxiliary battery

**STORAGE AREA: FEATURES**

- Pass-through storage areas (N/A on 300, 321)
- Flush mount radius luggage doors
- Heated holding tanks (opt. on 300, 310 and 315)

**OPTIONS**

- Heated and enclosed roto-cast. holding tanks (Std. on 321 and 340)

Due to continuous product improvement, please see the website for the latest in standards and options, specifications, and technical data. Go to [www.holidayrambler.com](http://www.holidayrambler.com).



ARISTA®  
2008

## BEING DIFFERENT MAKES ALL THE DIFFERENCE.

At Monaco Coach Corporation, we always strive to be the best. And that means thinking outside the box. Giving you more of what you want in an RV. Programs like Monaco Financial Services and 24/7 emergency technical support. No other manufacturer can match Monaco's offerings. No one even comes close. Why not discover the difference for yourself? Visit [www.monacodifferent.com](http://www.monacodifferent.com)

**"No other manufacturer can match Monaco's offerings.  
No one even comes close."**



KAY TOOLSON, CEO

### WARRANTIES

12 MONTH basic limited warranty

5 YEAR limited warranty on aluminum or steel frame structure of sidewall, roof, front and rear cap

Applies to certain models. See owner's manual for complete details.



**ASSISTANCE**

SALES • TECH • ROADSIDE

**WE'RE HERE. ANYTIME, EVERY TIME.**

- Reach us anytime — literally — via our live customer support line.
- Drive in to one of our 350 Service Centers.
- Enjoy the first year free when you enroll in our Owner Advantage Roadside Assistance Program.
- See where it all begins with a tour of one of our facilities in Indiana or Oregon. Call 1-800-650-7337 or 1-800-634-0855 to find out more.



**HOLIDAYRAMBLER.COM**

Log on to our website anytime, night or day. It's your link to everything Holiday Rambler, including product news and updates, club events, dealer and service center info and much more. Take it for a test drive today.

606 Nelson's Parkway Wakarusa, IN 46573  
[www.holidayrambler.com](http://www.holidayrambler.com) | 800-245-4778



**HOLIDAY RAMBLER®**

*This is Living®*



MONACO COACH CORPORATION



Monaco is traded on the New York Stock Exchange under the listing MNC.  
© 2007, Monaco Coach Corporation 01/08 9112ALUM Litho in USA.