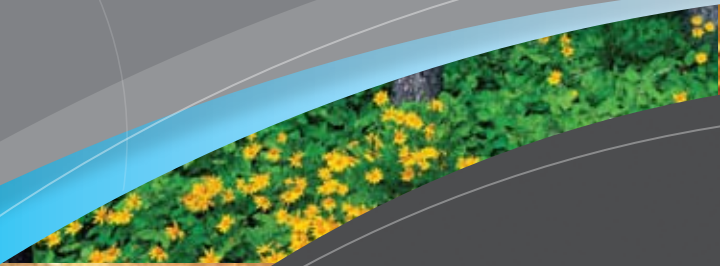


ALUMASCAPE® SUITE
2008



HOLIDAY RAMBLER®

This is Living®



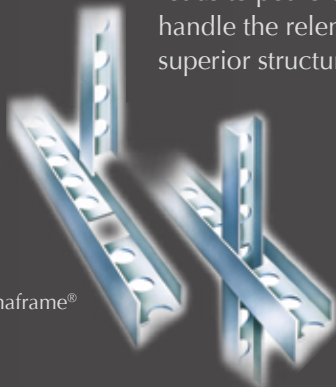


ALUMASCAPE® SUITE

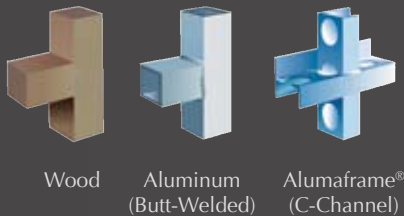


The Alumascape Suite features Holiday Rambler's exclusive Alumaframe® Superstructure. Our revolutionary system of aluminum H and C-Channel crossmembers runs the entire length of the unit, with double-welded intersections for added strength. This rigid design is both lighter and sturdier than wood or tubular aluminum frames – and much more reliable than butt-welded or screwed joint designs. From dirt roads to potholes, you can count on Alumaframe® to handle the relentless stresses of the road and provide superior structural integrity for many years to come.

- 1** 6,000 lb. sealed bearing tandem axles with electric brakes (N/A: 36REQ, 36RLQ); 7,000 lb. sealed bearing tandem axles with electric brakes (36REQ, 36RLQ)
- 2** Aluminum roof structure with double I-beam roof rafters 16" on center
- 3** 1-1/2" steel-framed sub-floor
- 4** Plenty of room to bring along all your gear in the exterior storage spaces



Alumaframe®



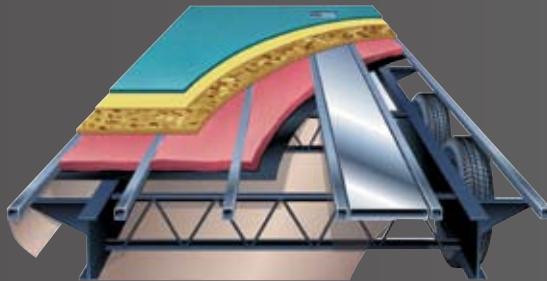
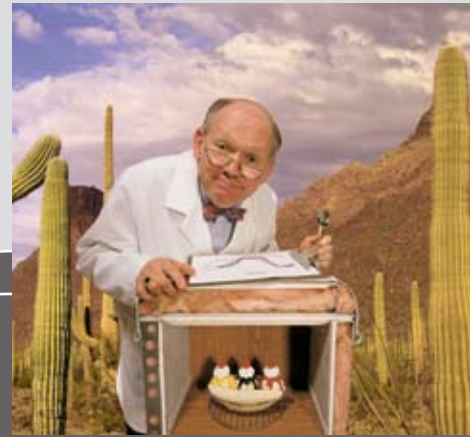
9-LAYER ROOF (top to bottom)

- Peaked roof with BriteTek™ roof material
- Luaun backer
- Thick, tapered bead foam insulation
- Aluminum double I-beam superstructure filled with fiberglass insulation
- Vapor barrier
- Structure foam: thermal insulative barrier
- Vapor barrier
- Luaun backer
- Vinyl ceiling

STAY COOL ON THE INSIDE

Holiday Ramblers are cooler than other RVs – literally. When put to the test in a thermal chamber, temperatures inside other RVs rose almost 30% more every hour than the Holiday Rambler model.* The secret lies in our exclusive, multi-layer insulation which blocks heat out, keeping the inside nice and cool.

* Test performed by an independent testing facility, Based on measurements taken every 15 minutes.



6-LAYER FLOOR: “WORKS IN THE BASEMENT”

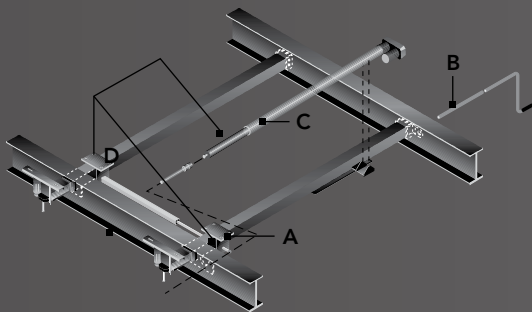
The underside of your fifth wheel features a 6-layer floor and a fully enclosed, heated and protective underbelly. The underbelly encloses the wiring harness and fresh water tanks. It helps protect the fluids from freezing and improves the overall insulation of the coach. The underbelly’s outer shell is made of rugged

composite material that withstands damage from road debris. By smoothing out the undercarriage, the underbelly provides an unrestricted air flow that results in easier towing and improved gas mileage. In addition, the frame is coated with a rust-inhibiting, electro deposit ion coating.

SLIDE-OUT

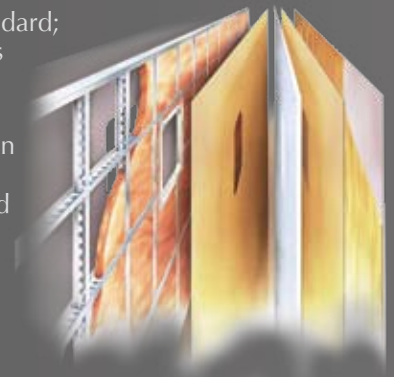
When you purchase a Holiday Rambler, you can be sure the slide-out boxes are some of the strongest and most reliable you’ll find anywhere. They feature our exclusive multi-layer construction to give you maximum insulation and to reduce the chance of warping, twisting or shifting. In addition, the linear actuator has a mechanical room lock that is built in, and there are adjustable built-in stops for in and out positions.

- A Bearing packs are bolted in 4 places, locking the gear and rack in place
- B A manual crank and extension rod comes standard with every unit, to serve as override if needed
- C Actuator motor is positioned to provide smoother movement and reduce twisting on the slide-out room
- D Alignment mechanism is separate from the linear actuator movement mechanism



6-LAYER EXTERIOR WALL (left to right)

- Smooth .040 aluminum is standard; high-gloss gel coat fiberglass is optional
- Interlocking C-Channel filled with 1-1/2” fiberglass insulation bonded in place so it doesn’t sag or leave spaces uninsulated
- Vapor barrier
- Bead foam adds comfort, saves energy and provides a thermal insulative barrier
- Vapor barrier
- Interior paneling





BODY CONSTRUCTION: FEATURES

- Alumaframe Construction
- Z-Frame Platform
- Smooth .040 Aluminum Exterior Walls
- Front and Rear Molded Fiberglass Caps
- Main Slide-Out House, 6'-1" Head Room
- 3/8" Foam Core, Thermal Barrier, Laminated Sidewall Structure
- Rear Bay Cap with Three Windows (N/A: 32RKD, 36REQ)
- 1-1/2" Steel Framed Sub-Floor
- Steel Framed and Insulated Bathroom Floor
- Laminated 5/8" Sturdi-Wood Flooring
- Aluminum Roof Structure with Double I-Beam Roof Rafter 16" On-Center
- 9-Layer Roof and 6-Layer Sidewall Construction
- Brite TEK™ Exterior Roof Material
- Flat Floor Slide-Out - Main Living Area
- Enclosed and Heated Underbelly
- PVC Coin Pattern Floor in Alcove Storage Area
- Radial Tires
- Aluminum Wheels
- Ladder
- Stabilizer Jacks - N/A with Quick Draw Leveling
- Shock Absorbers

- Spare Tire with Sport Wheel Recessed into Underbelly

OPTIONS

- 7,000 lb Sealed Bearing Axles with Aluminum Wheels (32SKT, 33SKQ, 33SKT)
- Quick Draw Electrical Rear Leveling - N/A with Stabilizer Jacks
- Trailair Equa-Flex Suspension System
- High Gloss Gelcoat Fiberglass Sidewalls
- Bike Rack

APPLIANCES AND ACCESSORIES: FEATURES

- 8 cuft. Refrigerator
- Microwave with Touch Control
- Wedgewood High Output 3-Burner Range with Oven
- Systems Monitor Panel on Range Hood
- Digital 12v Linear AM/FM with CD Player Stereo with 4 Speakers
- Telephone Jacks at Kitchen Table, Desk Area and Entertainment Center

OPTIONS

- 10 cu. ft. 2 way Refrigerator
- Roll-Out Pantry with Cabinet with 3 Baskets (N/A: 33SKQ)
- 3-Burner Cook Top without Oven
- Convection Microwave
- 27" LCD TV with HD Tuner and Mounting Bracket (36REQ)

- 23" LCD Color TV with Remote and Mounting Brackets Living Area (N/A: 36REQ)
- 15" LCD TV with Remote Control in Bedroom
- Home Theater Surround Sound System
- Fireplace with Decorative Hardwood Frame
- Built-in Vacuum with Deluxe Tools
- Washer/Dryer Prep with 50AMP Service - Requires 10 gal. Water Heater

FURNITURE: FEATURES

- Bedroom Slide-Out with Chest of Drawers
- Wood Booth Dinette with End Door and Arched Back Cushions
- Fabric Glider Recliner
- Hide-A-Bed Sofa

OPTIONS

- King Bed
- Ultima Vinyl Euro Chair(s) with Ottoman
- High Back Desk Chair (N/A: 32RKD, 32SKT, 33SKD)

- Free-Standing Dinette Table with Four Wood Chairs

WINDOWS / DOORS AND AWNINGS: FEATURES

- DarkTinted Radius Windows
- Tinted Skylight in Bathroom
- Patio Awning
- Swing-Out Entry Door Handle
- Window in Stool Room (N/A: 32RKD, 32SKD)

OPTIONS

- Dual Pane Windows with Dark Tint
- SlideOut Awning or Cover on Specific Houses

WINDOWS TREATMENTS: FEATURES

- Rear Bay Window with Residential Style Pleated Shades (N/A: 32RKD, 36REQ)
- Pleated Day/Black Out Shades in Living Area and Bedroom

ELECTRICAL SYSTEMS AND LIGHTS: FEATURES

- Water Heater Switch
- Electrical Management System - 30AMP (12V With 55AMP Conv.)
- Two (2) Exterior Security Lights
- Disconnect and Battery Box
- Cable TV, Telephone and Electrical Outlet Hook-up in Basement Storage
- Cable TV/DSS/ VCR Ready with Video Box
- TV Antenna with Cable Box
- Dual Exterior Cable/Satellite Receptacle

OPTIONS

- 1-12V Deep Cycle Battery with Disconnect
- 2-12V Deep Cycle Batteries with Disconnect
- Solar Prep
- Fluorescent Lighting in Living Room and Kitchen
- 50 amp Electrical Management Service
- Generator Prep

INTERIOR: FEATURES

- Newport Cherry Cabinets
- Laminate Countertop with Radius Corners Complemented with Radius Corian Accent Edge - Galley and Lavatory
- Dinette Laminate Countertop with Self Edge
- Work Station with Keyboard Drawer
- Utility Center by Entrance Door - Slide-Out Switches and Security Light Switches
- Armstrong Interlocked Tile Floor - Kitchen and Entry
- Armstrong Linoleum in Bathroom
- Pantry/Closet at Front Entry Door with Adjustable Shelves (N/A: 32SKD, 33SKQ, 33SKT)

OPTIONS

- Décors: Chai Latte, Warm Brandy
- Kitchen Countertop Extension
- Wilsonart Plank Flooring in Kitchen/Entry
- Designer Accessory Package

PLUMBING AND L.P. SYSTEMS: FEATURES

- Stainless Steel Kitchen Sink with Brushed Nickel High Profile Single Handle Faucet with Sprayer
- 10 gal. L.P. Gas/Elect. Water Heater
- Brushed Nickel Bathroom Faucets and Accessories
- Fiberglass One-Piece Radius Shower with Obscure Glass Door
- Lighted Water Management System with Drain, Spray-Port Water Sprayer with 15' Polyurethane Hose, Outside Shower with Hot and Cold, Soap Dispenser and Paper Towel Holder
- Water Heater By-pass Kit
- No-Fuss Flush Holding and Tank Rinsing System

- Two 30 lb. L.P. Tanks with Automatic Changeover and Cover

OPTIONS

- Water Filter System in Kitchen

HEATING, VENTS AND AIR CONDITIONING: FEATURES

- 35M BTU Hydroflame Electronic Ignition Furnace (N/A: 36REQ, 36RLQ)
- 40M BTU Hydroflame Electronic Ignition Furnace (36REQ, 36RLQ)
- In-floor Ducted Heating System
- Ceiling Fan
- One Carrier 13,500 BTU Rooftop Air Conditioner with Dehumidifier and Remote Control
- Wire Prep and Ducting for 2nd A/C with Optional 50 amp Service

OPTIONS

- One Carrier 15.0 High Capacity Rooftop A/C with Dehumidifier and Remote Control
- One Carrier 15.0 High Capacity Heat Pump Rooftop A/C with Dehumidifier and Remote Control

- Second Carrier 13,500 BTU Rooftop A/C with Dehumidifier and Remote Control (Requires 50 amp Service Opt.)
- Second Carrier 15.0 High Capacity Heat Pump A/C with Dehumidifier and Remote Control
- Attic Fan with Wall Control

ADVANTAGE PACKAGE

- 5 Year Structural Warranty
- Z-Frame Construction
- Alumaframe Superstructure
- Recessed Spare Tire Carrier
- Alaskan Package (Enclosed and Heated Underbelly, Heated Alcove Storage Area, Insulated Bathroom Floor, 9 Layer Roof and 6-Layer Sidewall)
- King Bed
- One Carrier 15,000 BTU High Capacity Rooftop A/C with Dehumidifier and Remote Control
- Independent Front Power Landing Jacks
- Steel Framed Floor

Due to continuous product improvement, please see the website for the latest in standards and options, specifications, and technical data. Go to www.holiday Rambler.com.



ALUMASCAPE® SUITE



Our tandem axles feature sealed bearings for maximum protection with no maintenance.



Attractive, pleated day/blackout shades provide an extra level of privacy in the living area and bedroom.



The triple entry step is mounted directly to the frame for the ultimate in safety and durability.



Stay cool and comfortable with the dependable 13,500 BTU Carrier rooftop air conditioner complete with dehumidifier and remote control. You can upgrade to a 15,000 BTU high-capacity air conditioner or add a second 13,500 BTU unit.



An unbelievable 116 cubic feet of pass-through alcove storage means you won't have to make tough decisions about what to bring along. There's room for everything you need.



Drawers and pullouts operate smoothly and stand up to years of wear and tear thanks to metal drawer guides.

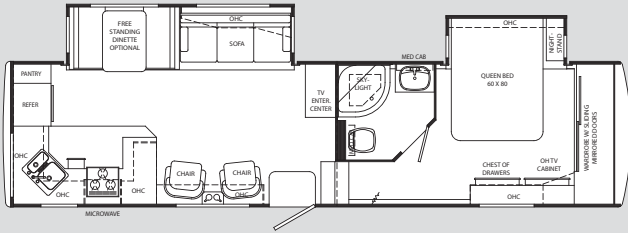
Weights*	32RKD	32SKT	32SKD	33SKQ	33SKT	36REQ	36RLQ
Gross Vehicle Weight Rating	14,400	14,400	14,400	14,400	14,400	16,950	16,950
Axle(s) Weight	6,000	6,000	6,000	6,000	6,000	7,000	7,000
Unloaded Vehicle Weight	10,750	TBD	10,820	12,100	11,400	12,430	TBD
Net carrying Capacity (NCC)	3,650	TBD	3,580	2,300	3,000	4,520	TBD
Tire Size and Load Range	16" E	16" E	16" E	16" E	16" E	16" G HT	16" G HT
Measurements							
Overall Length	34' 2"	34' 9"	34' 9"	35' 4"	35' 4"	37' 8"	37' 8"
Overall Height (Including A/C)	12' 8"	12' 10"	12' 8"	12' 9"	12' 9"	12' 8"	TBD
Exterior Width	98"	98"	98"	98"	98"	98"	98"
Tank Capacities							
Water Heater	10	10	10	10	10	10	10
Grey Tank	40/40	40/40	40/40	40/40	40/40	40/40	40/40
Black Tank	40	40	40	40	40	40	40
Fresh Tank	50	50	50	50	50	50	50
L.P. Tank	30 (2)	30 (2)	30 (2)	30 (2)	30 (2)	30 (2)	30 (2)

* Weights may vary by options.

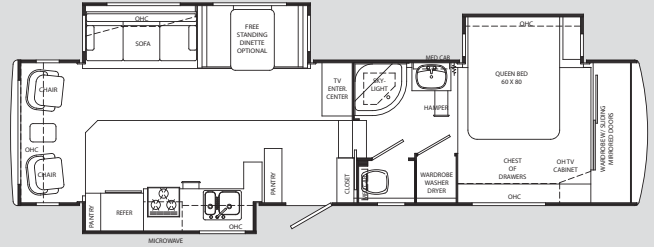
** Tank manufacturer's listed water capacity (WC). Actual filled LP capacity is 80% of listing due to safety shut off required on tank.

The actual overall length of the recreational vehicle may differ from that indicated in the brochure due to variances in the manufacturing process and/or installed components. The actual length may be greater or less than that indicated. Due to the large variety of options and floorplan arrangements available to our customers, actual weights for each unit can differ significantly. Holiday Rambler provides a weight sticker on each unit we produce which includes that unit's tank capacities and approximate weight. Consult your local Holiday Rambler dealer for unit availability and further information. The information printed in this brochure reflects product design, fabrication, and component parts at the date of printing. The manufacturer reserves the right, at any time, to make changes in product design or material or component specifications as its sole option, without notice. This includes the substitution of components of a different brand or trade name which will result in comparable performance. All information printed in this brochure is subject to change after the date of printing. Some features shown or mentioned in this brochure are optional and may only be available in selected floorplans. Photographs may show props or decorations that are not standard equipment on Holiday Rambler models. Holiday Rambler, the Holiday Rambler logo and its design, are registered trademarks. All other products and company names are trademarks and/or registered trademarks of their respective holders. While the color of the motorhome's exterior and the interior fabrics depicted in this sales brochure are fair and reasonable depictions, the colors depicted may not be an exact match of the actual colors because of the variances in photo-processing and variances caused by inserting the photographs within the sales brochure. Due to product improvements, changes during the model year and/or transcription errors that may occur, information represented within this brochure may not be accurate at the time of your purchase. If certain information is significant to your purchasing decision, please confirm the information with your dealer prior to submitting your order. Component part and appliance manufacturers issue limited warranties covering those portions of the recreational vehicle not covered by the Limited Warranties issued by Monaco Coach Corporation. To learn which specific component parts and appliances are excluded from the Limited Warranties issued by Monaco Coach Corporation, please contact your selling dealership or Monaco Coach Corporation directly, or review the warranty packet inside the recreational vehicle.

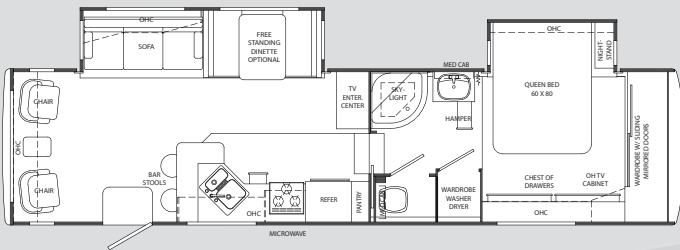
32RKD



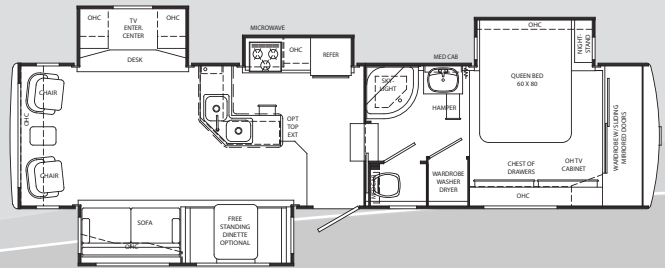
32SKT



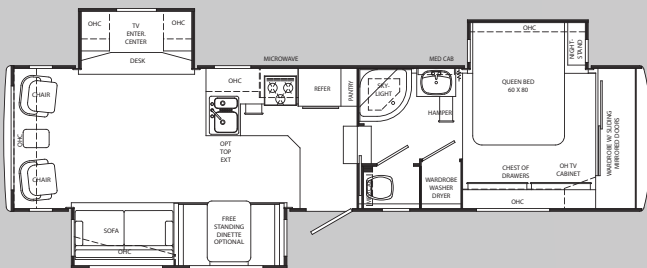
32SKD



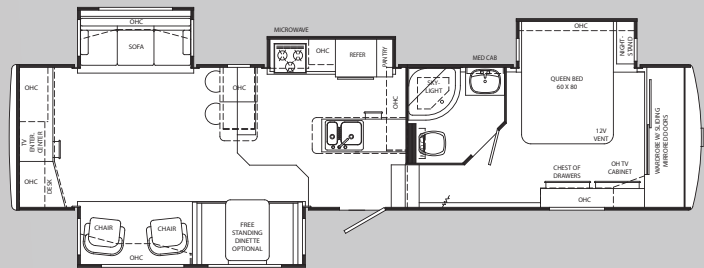
33SKQ



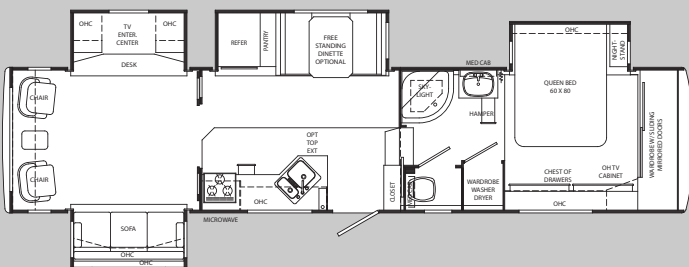
33SKT



36REQ



36RLQ





ALUMASCAPE® SUITE 2008

BEING DIFFERENT MAKES ALL THE DIFFERENCE.

At Monaco Coach Corporation, we always strive to be the best. And that means thinking outside the box. Giving you more of what you want in an RV. Like our exclusive Roadmaster chassis. PanaSuite™ full-wall slides. And programs like Monaco Financial Services and 24/7 roadside assistance. No other manufacturer can match Monaco's offerings. No one even comes close. Why not discover the difference for yourself? Visit www.monacodifferent.com

**"No other manufacturer can match Monaco's offerings.
No one even comes close."**



WARRANTIES

12 MONTH basic limited warranty

5 YEAR limited warranty on aluminum or steel frame structure of sidewall, roof, front and rear cap

Applies to certain models. See owner's manual for complete details.



24/7
ASSISTANCE
SALES • TECH • ROADSIDE

WE'RE HERE. ANYTIME, EVERY TIME.

- Reach us anytime — literally — via our live customer support line.
- Drive in to one of our 350 Service Centers.
- Enjoy the first year free when you enroll in our Owner Advantage Roadside Assistance Program.
- See where it all begins with a tour of one of our facilities in Indiana or Oregon. Call 1-800-650-7337 or 1-800-634-0855 to find out more.



HOLIDAYRAMBLER.COM

Log on to our website anytime, night or day. It's your link to everything Holiday Rambler, including product news and updates, club events, dealer and service center info and much more. Take it for a test drive today.

606 Nelson's Parkway Wakarusa, IN 46573
www.holidayrambler.com | 800-245-4778



HOLIDAY RAMBLER®

This is Living®



MONACO COACH CORPORATION



Monaco is traded on the New York Stock Exchange under the listing MNC.
© 2007, Monaco Coach Corporation 07/07 HR_08ALUM_ST Litho in USA.