

LANDMARK
BY HEARTLAND



Welcome Home...



LANDMARK

Picture Yourself

in this LANDMARK living room highlighted by an over-size bay window framed by elegant window valances and hardwood overhead cabinets with decorative glass inserts.

The entertainment center/work desk area features a 32" flat screen LCD television with swivel bracket for easy-viewing from the dinette; plenty of work space crafted in a true Hanex™ solid-surface countertop with waterfall edge; and dark tinted component cabinet.



Grand Canyon



Each LANDMARK features stunning, Amish-crafted hardwood interiors with a rich, cherry stain. You'll appreciate LANDMARK's attention to detail, from the custom soffeting and moldings to the upgraded furniture. Storage abounds, from the deluxe air-mattress hide-a-bed sofa with large storage drawer, to the hand-crafted hardwood dinette which offers storage in both the table and chairs.

Flowing painted exterior graphics combine with fade-resistant vinyl swooshes to provide each LANDMARK with a look of elegance.

Spacious

Interiors are the hallmark of the LANDMARK series of luxury fifth wheels by Heartland RV, and this island kitchen design is one of the best ever. You'll love this Augusta model's extraordinary storage and countertop space – featuring all hardwood cabinetry with detailed crown molding and solid-surface counter tops with waterfall edging.

The appliances feature stainless steel fronts, while the track lighting overhead lends to the coach's true residential feel.

Whether you're preparing meals or hosting guests, this LANDMARK is sure to impress with its stunning look and spacious design. The side-aisle layout of this model allows for a full wall of extra cabinets and even more countertop space running next to the optional 4-door refrigerator.

Strong, steel ball-bearing, full-extension drawer guides on every drawer allow LANDMARK to construct deeper, more usable storage for our customers.



LANDMARK

Relaxing Retreat

The bedroom/bathroom suite of the LANDMARK features tremendous spaciousness and a well-thought design. The plush, pillow-top king bed in the slide-out is surrounded by elegant slide fascia and a custom headboard. The designer pillow package and bedspread scream sophistication. Dual windows provide excellent cross-ventilation, while a private entrance is provided to the side-aisle bath.



One of the great things about this LANDMARK Augusta side-aisle bath design is the true residential feel it provides, as well as the privacy factor. The large neo-angle shower is highlighted by an overhead skylight while a porcelain sink sits atop a roomy lav base. Hand-crafted hardwood louvered doors hide a stackable washer/dryer closet – perfect for handling all your laundry needs while on the road.



Residential Design

Not only does the LANDMARK bedroom suite offer a relaxing retreat, it also is home to some of the finest residentially inspired storage space ever achieved in a fifth wheel. The dresser at the foot of the bed features tall drawers on full-extension steel ball-bearing glides for maximum function, and is topped by a radiused solid-surface counter top with waterfall edge.

The side linen closet combines with the overhead cabinets and optional flat screen TV to provide this dresser with true functionality. Natural light is provided by both the large window above the dresser and the two windows in the hallway, while the radiused wall of the bathroom separates this coach from the rest.

The LANDMARK has always been known for exceptionally large front wardrobes and well-designed bedroom suites and this year's model proudly maintains that tradition. Built-in shoe storage combines with a large overhead shelf and full width clothes rod to maximize the storage space.



Windows in the LANDMARK feature custom-designed hard-sided valances and decorative wood trimmed sills for a look of elegance.



Harvest



Midnight



Godiva



Slate

LANDMARK

Refined Elegance

The LANDMARK Pinehurst fifth wheel from Heartland offers a spacious island kitchen design with loads of base cabinet and overhead storage space!



The LANDMARK Pinehurst features a stunning glass-surrounded entrance from the bathroom to the bedroom. The king bed slide out room also houses a large wardrobe for increased storage.



Pinehurst



Choose the optional DOMETIC™ Elite 4-door refrigerator offering 14 cu.ft. of storage space, including an ice-maker and in-door water dispenser.



Affordable Luxury

When it comes to affordable luxury and value, LANDMARK leads the way with stunning all hardwood interiors, solid-surface countertops, air-bed mattress sofas, expansive interior layouts and quality appliances and amenities! You'll appreciate the attention to detail found in each LANDMARK fifth wheel as well as the many storage opportunities found throughout the coach.



Grand Canyon



The bedroom in the LANDMARK Pinehurst model offers a tremendous amount of overhead and base cabinet storage, as well as a roomy king bed!

Don't settle for anything less than all hardwood cabinetry, including the stiles which are pre-drilled and screwed for long lasting function.



Your Laminated World...

Strength, Durability & Comfort BEYOND

The combination of these three systems bring you the Strongest and Lightest construction available while also providing unparalleled noise reduction, thermal insulation and durability. Protecting your investment is important to HEARTLAND. Laminated construction provides that protection in addition to offering peace of mind that you will be spending more time enjoying your family and travels than worrying about repairing your RV.

LAMINATED WALL SYSTEM



**2" THICK
SIDEWALLS!**

Lightweight
ALUMINUM



Just an 1/8" thick foam cup protects your hand from scalding hot coffee... imagine what nearly 2" of block foam does for your Laminated Heartland Sidewall!

Double Welded, Fully Laminated Sidewall Construction

LAMINATED FLOOR SYSTEM



LANDMARK's LAMINATED Floor System is one of the STRONGEST FLOORS in the industry! Featuring sturdy 2.5" Aluminum Framing; thick Block Foam Insulation; One-Piece Seamless Decking and a Thermo-Board Luan on the bottom. All of this is Laminated together for Maximum Strength and Insulation R Value - virtually eliminating flex in the floor!



NO MORE FLEX!
Competition's Non-Laminated Floor

Traditional RV Floor Construction often flexes in the middle of the coach - because that's where the holding tanks are located and there is no steel frame support under the lumber.

LAMINATED ROOF SYSTEM

BEST-IN-CLASS

- INSULATION • R VALUE
- NOISE REDUCTION
- DURABILITY
- STRENGTH
- LOOKS



- RUBBER SKIN
- WOOD DECKING
- BLOCK FOAM INSULATION
- ALUMINUM RIBS & PERIMETER
- SOFT TOUGH DECORATIVE CEILING VINYL

5 INCHES - FIVE LAYERS



Strength, Durability & Comfort **BEYOND COMPARE!**

SOUND BARRIER



THERMAL EFFICIENT



SUPER STRENGTH



HEARTLAND's
LAMINATED Floor
Construction easily
supported over
1,800 lbs. of
Water Jugs
in one spot -
resulting in
less than
1/4" of flex!!



HEARTLAND's 3"
LAMINATED FLOOR

Heartland builds recreational vehicles with as many residential features and construction methods as possible and we are excited to introduce this 3" Laminated Floor System in our LANDMARK fifth wheels. Choose Heartland for Maximum Strength; Maximum Insulation Value; and Minimal Flex!!

Distinguishing Features

It's the attention to detail and the quality components and construction that make the LANDMARK stand out from the competition as the best value for your investment.

LANDMARK



The LANDMARK's cavernous pass-through exterior storage compartment is clutter-free for maximum use of space and features a rugged, diamond-plate vinyl flooring with steel tie-down rings to help secure your cargo. There is electrical and TV hookups for outdoor entertainment, while strong gas struts easily lift up the insulated door and hold it in place.



The LANDMARK's famous Universal Docking Center has truly changed the way fifth wheels are designed. When Heartland pioneered this engineering marvel, nothing like this had ever been accomplished in a towable. This year's version is better than ever with built-in water heater by-pass and black tank flush valve; an improved easy-winterization system; all holding tanks pull handles; city water fill; hot and cold shower; phone, cable and satellite hook-ups and more!



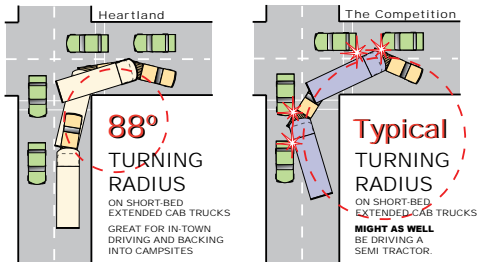
Enjoy the sleek, modern looks and functionality of LANDMARK's new optional bus style slam doors equipped with heavy duty struts for easy operation and they prevent unexpected closings due to wind. Oversized pull latches open easily. The tight automotive rubber seal protects your belongings from moisture and LANDMARK's compartments are keyed for security using keys and locks unique to LANDMARK.



The electric power cord reel means you'll never have to wind that heavy 50-amp cord up by hand again!

SUPERIOR CONSTRUCTION AND DESIGN TRANSLATE INTO A SUPERIOR VALUE!

ACHIEVE AN 88° TURN!
IN A SHORT-BED, EXTENDED CAB TRUCK
ONLY IN A HEARTLAND!



PATENT PENDING!

DON'T ACCEPT ANY IMITATIONS - IF YOU CAN'T TURN 88° IT'S NOT A HEARTLAND!

Perfect for Short-Bed, Extended-Cab Trucks



ZERO° TESTED!

Heartland 5th wheel Construction has been subjected to rigid testing in the famous DOMETIC™ extreme temperature testing chamber where it passed with flying colors! The chamber is set to 0° to test the unit's heating efficiency, followed by being set at 100° to test its cooling efficiency. With our thick 2" laminated walls; enclosed and heated underbelly; and insulated floor - the interior of the Heartland coach remained warm and comfy during the sub-freezing test and nice and cool during the heat test!



For more details, visit our web site: www.HEARTLANDRVs.com



Trailair's™ EQUAL-FLEX rubber-cushioned equalizer suspension system is standard on every LANDMARK and provides an incredibly smooth ride.



HEATED AND ENCLOSED UNDERBELLY

This one-piece corrugated plastic underbelly is fitted and attached to the entire length of the fifth wheel, providing a thermal barrier that is easily removed for access to the underbelly. The underbelly area is insulated and heated from the furnace to help protect against the elements.



LANDMARK's thick, double insulation in the sub-floor is great for extended stay camping.



Yet another LANDMARK smart design - the air-mattress hide-a-bed sofa offers the ultimate in comfort, as well as a deep drawer that is perfect for storing throw blankets and other items.



TRUE SOLID-SURFACE.

LANDMARK's HANEX™ TRUE RESIDENTIAL SOLID SURFACE Counter Tops increase the usability, beauty and value of our coaches. The advanced blend of natural materials and pure, acrylic polymer is formed over a strong plywood base, providing design versatility and long-term performance to our customers. Hanex™ is one of the toughest counter tops in the world that is both durable and RENEWABLE.

RENEWABLE means it is the same consistency through and through and if scratched or chipped, can be easily repaired so that it looks like new!

The competition on the other hand... offers only a thin layer of FIBERglass, adhered to lesser quality particle board material that disintegrates when it gets wet. The FIBERS of these counter tops tend to stick out of the bottom edges and are painful to the touch.



vs. THIN FIBERGLASS.

Riding on a Trail-Air™ suspension, the LANDMARK features hydraulic front jacks, electric rear jacks, reflective windows for increased UV protection and energy efficiency. Protect your investment with optional full body paint providing great looks and a long lasting finish. Multiple slide-out floorplans offer the ultimate in living space.



Heartland's optional ToyLok is perfect for quickly and easily securing bikes, grills, furniture and anything else that needs to be secured when you leave your site unattended.

Standard Features...

The Landmark line of luxury fifth wheels offers the discriminating shopper an excellent value for the dollar. Listed below are the features and options that have made Landmark a favorite among today's extended stay campers.

INTERIOR

- Four Decors to Choose From
- Amish-Crafted Natural All-Hardwood Cabinet Stiles, Doors and Drawers w/Cherry Stain
- Hidden Cabinet Hinges
- All Cabinet Frames are Pre-Drilled, and Screwed Together – not stapled
- Baltic Birch Drawer Construction (Real Wood)
- Deluxe Ball-Bearing, Full Extension Drawer Guides w/Drawer Catches
- Custom Crafted, Mirrored & Lined Front Wardrobe with Built-In Storage
- Custom Crafted Dresser with Overhead Cabinets and Solid Surface Counter
- Washer/Dryer Prep – with Closet for a Stackable Washer/Dryer
- Numerous Hardwood Drawers and Doors provide Unmatched Storage
- 6'-4" Bedroom Ceiling Height Throughout
- Deluxe Pillow Top King Size Bed with Pillow Package
- Two Windows in Bedroom for Cross Breeze
- Soft-Touch Ceiling
- 2 Stereo Speakers in Bedroom
- Deluxe Headboard Design

EXTERIOR

- High Gloss Laminated Gel Coat Fiberglass Sidewalls
- Double-Welded Aircraft Quality Aluminum SUPERSTRUCTURE Cage Construction Both 1.5" and 3" Tubular Design
- Deluxe Electric Awning
- Drip Rail w/Down Spouts
- Upgraded Exterior Radius Metal
- Reflective, Tinted Safety Glass Windows with UV Inhibitor
- Ventilation Slider Side Windows
- Properly Placed Torque Louvered Windws.
- Running Lights & Exterior Lights
- Entrance Step Light - Under Steps
- Amber Porch Light Above Entrance Door
- Automotive/Aerodynamic Styled Rear Cap
- Recessed Tail Lights
- Engineered Molded Wind Deflection Fins
- Dent-Resistant Material
- Rear Ladder for Easy Roof Access
- Exterior Entertainment Center Prep
- One-Piece Seamless EPDM Rubber Roof
- Moisture Ventilation Caps
- 12" I-Beam Frame w/Rust Prohibitive Coating
- Hydraulic Landing Gear (30X Faster than Electric)
- Out Board Landing Legs Placement
- Spring Loaded Snap Pins
- Heavy Duty Electric Rear Stabilizer Jacks
- Heavy-Duty Load Range G 16" Tires
- Deluxe 16" Aluminum Rims
- Recessed 16" Steel Rim Spare Tire
- Equa-Flex Suspension System by Trail-Air
- 7,000 lb. Axles with ULTRA-Lube™ Hubs
- Four Heavy Duty Shock Absorbers
- 2 x 12" Brakes
- Adjustable Spring Hangers
- Monogrammed Fender Skirts

UNDERBELLY

- Seamless Corrugated Underbelly Material
- Heated and Enclosed Underbelly
- Heated and Insulated Holding Tanks & Gate Valves
- Dual Insulation System (Flexfoil R-14 and a Formaldehyde Free Blanket of R-14)

PLUMBING

- Color-Coded Water Lines w/Limited Warranty
- 5.7 Shurflo Extreme™ Water Pump
- Quick & Easy Winterization System in U.D.C.

POWER

- Upgraded 60 AMP/12V DC Converter
- 55 Amp Marine Cord w/Electric Power Cord Reel
- Dual Battery Box - One 12V Battery (room for two)
- Convenient Battery Shut-Off Switch
- 110V Exterior Electrical Receptacles

HEATING

- Seamless One Piece In-Floor Heat Duct
- 40,000 BTU Furnace
- Heated Stool Room (Most Models)

COOLING

- Insulated In-Roof Air Conditioning System for Maximum Efficiency
- 15,000 BTU Air Conditioner
- Pre-Wired and Framed for Second A/C in Bedroom
- Rain Sensor Fantastic™ Fan Thermostat in Kitchen (Moves 1,000 cu. ft. of air per minute)
- Air Conditioned Stool Room

TOTAL INSULATION VALUES

- Walls - R8 *All Formaldehyde-Free
- Roof – R23 Insulation.
- Floor System - R35

SLIDE ROOM

- 6'-5" Ceiling Height in Main Slide
- Decorative Slide-Out Fascias
- Hydraulic Operating System w/Independent Switches
- Selector Valves for Slide Rooms
- Double Bulb/Double Squeegee Seals w/One-Piece Weather-proof Floor Pan
- Cabinets Above Sofa w/Struts
- Hydraulic Manual Override System

INTERIOR STANDARDS

- Deluxe Upholstery Fabrics
- Day/Night Shades (night shades/BDRM)
- Air Mattress Hide-a-Bed Sofa
- Padded Soft Touch Vinyl Ceiling
- Deluxe Pillow & Bedspread Package
- Deluxe Decorative Border on Walls
- Support Struts on Overheads
- Custom Lighting Package

ENTERTAINMENT & CONNECTIONS

- 32" LCD TV with Swivel Bracket
- Home Theater Surround Sound System (2 Speakers in Bedroom)

- Cable/Satellite TV Hookups in Bedroom and Exterior Storage Compartment
- Large Computer Desk/Work Station
- Black Glass Door Inserts

LIVING ROOM

- Decorative Dark Glass Inserts in Select Overhead Cabinet Doors
- Upgraded Recliners (2)
- Hide-a-Bed Sofa with Air Mattress
- 110V Ceiling Fan with Brushed Nickel Directional Lighting
- Decorative Border Tape
- Hardwood End Table

APPLIANCES AND LIGHTING

- 9 Cu.Ft Dometic™ Refrigerator with Stainless Steel Fronts
- Sealed 3-Burner Cook Top w/Oven
- Over the Range 30" Convection Microwave Oven
- 12 Gal. Gas/Electric DSI W.H.

MIRRORED CLOSET AT ENTRY (Most Models)

- Light Switches
- Coat Hooks
- Key Hooks
- Water Heater DSI Switch
- Full System Monitoring Panel
- Master Control Slide Switch

FOR YOUR PROTECTION

- Fire Extinguisher by Entry Door
- Smoke Detectors on Ceiling
- LP Gas Detector
- CO2 Detector
- Guide Light Under Entry Step
- Exterior Security Flood Lights
- Break Away Switch
- Deadbolt Lock on Entrance Door
- 120V GFI Protected Outlets
- Fire Escape Windows
- All Safety Glass Windows
- 12V Hitch Light

KITCHEN

- True Solid Surface C-tops with Deluxe Waterfall Edging
- Residential, All-Hardwood Cabinets with Hidden Hinges
- Illuminated Toe Kicks
- Armstrong™ No-Wax Flooring
- Residential Size Stainless Steel Double Bowl Sink
- Pull Out Sprayer Faucet
- Solid-Surface Sink Covers
- Deep Residential Size Drawers
- Ball Bearing Drawer Guides Throughout with Drawer Catches
- Pots/Pans Storage Cabinet
- Custom Crafted Dinette Table and 4 Chairs - with Storage in both the Table and Chairs
- Large, Deep Pantry (N/A with 4 Door Refer)
- Fantastic Fan with Rain Sensor

BATH AREA

- One Level Floor for the Entire Suite
- 6'-4" Bath/Bed Ceiling Height
- Armstrong™ No-Wax Flooring
- 110V Outlets Conveniently Located
- Porcelain Sink Bowl
- Linen Cabinet Storage
- True Solid-Surface Countertop with Deluxe Waterfall Edging
- Residential Single Lever Faucet
- Large Mirrored Medicine Cabinet

COMMODOE ROOM

- Power Roof Ventilation
- Dual 12V Lights with Soft Lighting Lenses
- Real China Commode w/Foot Flush
- Extra Wide Recessed Storage Cabinet w/Door
- Large Privacy Tinted Fresh Air Ventilation Slider Window
- 110V Outlet for Bathroom Night Light
- Heat Duct and Air Conditioning Duct in the Commode Room (Most Models)

SHOWER

- Residential One-Piece Fiberglass Shower with Decorative Glass Door
- Tinted Radius Domed Skylight
- 12V Water Proof Shower Light
- Perfect Flow Shower Head w/Flow Control Valve

GRAPHICS

- Custom Painted Exterior Graphics Combine with Fade-Resistant UV Protected Vinyl Graphics

OPTIONS

EXTERIOR

- Trailair™ Hitch
- 5.5KW LP Generator
- Slide Awnings
- ABS Hitch Cover
- Full Body Paint

INTERIOR

- Euro-Chairs IPO Standard Recliners
- Ultra Leather Chairs IPO Standard Recliners
- Extra Chair for Computer Desk
- 19" LCD Flat Screen TV for Bedroom

APPLIANCES

- Electric Fireplace
- Stackable Washer/Dryer
- Queen Bed IPO King Bed
- 14 Cu. Ft. Dometic™ Elite 4-Door Refrigerator with Ice Maker
- 9 Cu. Ft. Dometic™ Refrigerator w/Ice Maker

HEATING & COOLING

- Fantastic Fan in Bedroom w/Rain Sensor
- Dual Pane Windows with UV Protect. Tint
- 110V Heat Strips for Holding Tanks
- 2nd A/C - 13.5M BTU Low Profile (in Bedroom)

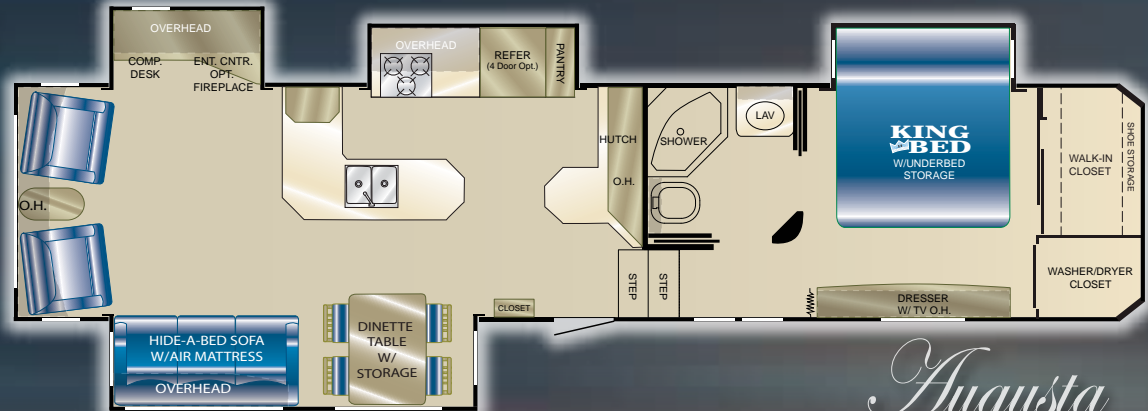
Spacious Floorplans

Length: 38'-5"

GVWR: 16,200 lbs.

Dry Weight: 12,595 lbs.

Hitch Weight: 2,125 lbs.



Augusta



Cape Cod

Length: 39'-0"

GVWR: 16,250 lbs.

Dry Weight: 12,765 lbs.

Hitch Weight: 2,420 lbs.

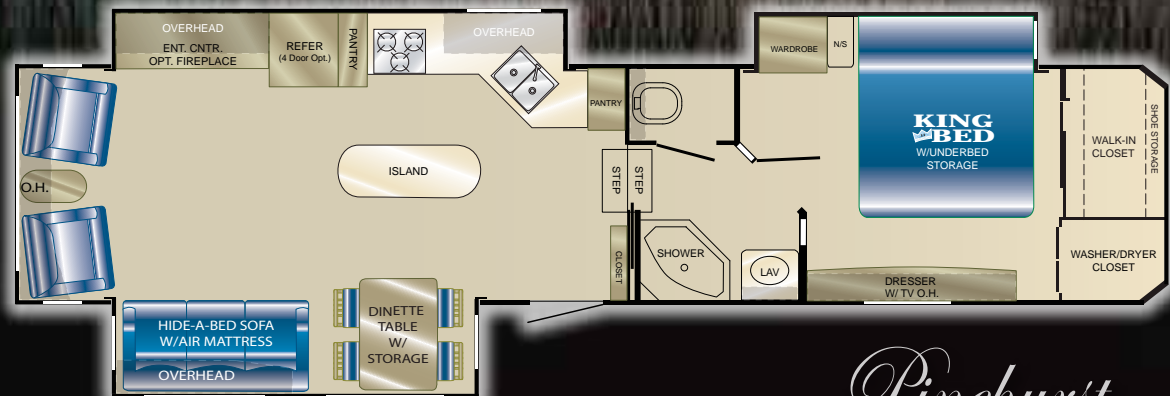
- 104 Gallon Dual Tank Fresh Water System
- 90 Gal. Grey Water Tank
- 45 Gal. Black Water Tank
- Dual (2) 40# LP Bottles w/Auto Changeover

Length: 38'-8"

GVWR: 16,550 lbs.

Dry Weight: 12,980 lbs.

Hitch Weight: 2,295 lbs.



Pinehurst

The New LANDMARK Grand Canyon represents the ultimate triple slide. Featuring a private master suite complete with a King bed, walk in closet, wardrobe, washer/dryer closet and spacious bathroom. The Living area is equipped with opposing slides offering an enormous, open space for relaxing or entertaining guests



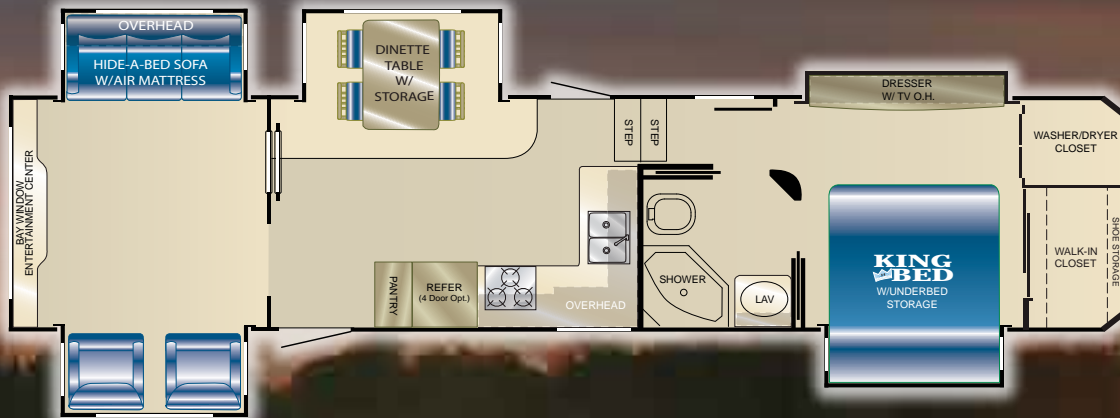
New Grand Canyon

Length: 37'- 7"

GVWR: 16,200 lbs.

Dry Weight: 12,630 lbs.

Hitch Weight: 2,295 lbs.



Oakmont

Length: 39'- 1"

GVWR: 16,500 lbs.

Dry Weight: 13,660 lbs.

Hitch Weight: 2,020 lbs.

The New LANDMARK Oakmont features a stunning living room area separated by a french sliding door. A kitchen area with a secondary entrance. The master bedroom suite is fit for a King. The suite also features a large wardrobe in the fifth slide-out for increased storage and floorspace.





Heartland Recreational Vehicles
1001 All-Pro Drive • Elkhart, IN 46514 • 574-262-5992

Community. Convenience. Close-to-home.

Where you purchase your recreational vehicle is ultimately your decision but Heartland urges you to consider buying at your local dealer. Dealers are part of your community, providing jobs and contributing to your local economy. These dealers are under obligation to provide warranty service for products they sell, but are not legally required to service products purchased from other dealers. At some point, you may need to return to the dealer you buy from - why not stay close to home? After all, home is where your Heartland is!

BENEFITS OF PURCHASING YOUR RV LOCALLY:

- You enjoy valuable relationship building with Dealer Representatives, close to your home, who will explain the features and benefits of the product.
- You receive a full product orientation prior to delivery, which includes hands-on directions for many of the coach's systems and functions. You are also introduced to the Dealership's Service/Parts/Warranty personnel who are at the ready to help you with any issues you may encounter, now and in the future.
- You enjoy customer PRIORITY. Dealerships generally service their purchasing customers first - others may experience long delays and miss opportunities to use their RV. What is it worth for you to have a dealership's full attention and motivation to satisfy you when you need service – in a timely manner?
- Valuable TAX dollars and jobs stay in YOUR community which pays for your roads, schools, police and fire departments.

DON'T UNDERESTIMATE CUSTOMER SERVICE AND PERSONAL CARE!

For Canadian Residents: If you purchase an RV out-of-country, there are additional fees, taxes and inspections that must be met before bringing your product home. Your local Canadian dealers are experts in these provisions.

Your Authorized Heartland Dealer:

	VENDOR 800#
CALL DIRECT FOR DIRECT RESULTS!	
TOLL FREE & WARRANTY PHONE NUMBERS:	
<small>In an effort to offer the best possible customer service, we are providing you with the warranty phone numbers of our most common vendor partners so you may work directly with them to more quickly handle service issues. Check the brand name on the product to determine the correct vendor.</small>	
LIPPERT	1.866.524.7821
DOMETIC	1.800.544.4881
NORCO	1.800.347.2232
SHUR-FLOW	1.800.854.3218
THETFORD	1.800.543.1219
KIB	1.800.250.7051
TREDIT TIRE	1.800.537.2925
A.S.A.	1.800.688.3135
PROGRESSIVE	1.209.781.4241
ATWOOD	1.877.294.8997
SUBURBAN	1.423.775.2151
B & B	1.574.259.7838

Call Direct, Fast Results! 800# LABEL IN EVERY HEARTLAND

We provide a convenient sticker in each coach listing the warranty phone numbers of our most common vendor partners so that if you choose to, you may work directly with them to more quickly resolve issues or obtain replacement items.



HEARTLAND CUSTOMER SERVICE WE'VE GOT YOUR BACK!

Over 40 men and women located in a dedicated facility servicing our customers every day. With a dealer network of over 400 locations across the U.S. and Canada, you're never far from an authorized Heartland dealer.

www.HEARTLANDRVS.com



- Experience:**
- Product Walk-Through Videos
 - Side By Side Comparisons
 - Feature Videos • Photo Galleries
 - Virtual 360° Tours
 - Detailed Floor Plans
 - News • Testimonials
 - Customer Service
 - Service Locator
 - Owners Club • More
- at our Informative Web Site



Product information is as accurate as possible as of the date of publication of this brochure. Due to Heartland's commitment to continuous product improvement - floorplans, materials, components, features, specifications, options, etc. are subject to change without notice or obligation to Heartland Recreational Vehicles. 2010 model year LANDMARK specifications apply to coaches with VIN numbers ending with 204336 and higher.
Tow Vehicle Caution: Owners of Heartland recreational vehicles are solely responsible for the selection and proper use of tow vehicles. All customers should consult with a motor vehicle manufacturer or their dealer concerning the purchase and use of suitable tow vehicles for Heartland products. Heartland disclaims any liability or damages suffered as a result of the selection, operation, use or misuse of a tow vehicle. Heartland's limited warranty does not cover damage to the recreational vehicle or the tow vehicle as a result of the selection of the tow vehicle.
See your nearest Heartland dealer to review a current model. 40,000 LITHO 3/09