

LUXURY TOWABLE  
FIFTH WHEELS

DEDICATED TO QUALITY,  
INNOVATION AND  
VALUE.



FAMILY OWNED SINCE 1983

# Prairie Schooner





# *Prairie Schooner*



Relax and enjoy the luxurious comfort in our 36FTE model featuring overstuffed deluxe recliners and huge 100" long J-lounge with its built-in air mattress hide-a-bed while enjoying the 42" LCD TV that lifts up out of the rear cabinets at the push of a button. The electric fireplace with hardwood mantle, JVC home theater surround sound system, rich textured carpeting, "Sunburst" arched window and deluxe cabinetry provide all the comforts you'll truly enjoy in your home away from home! (Shown with optional "Brentwood Maple" cabinetry in Pewter Smoke décor)





The rear lounge area of this 30FRL model provides unmatched comfort and style in a fifth wheel that's easy to tow and maneuver in tight areas. The larger overstuffed recliners, 74" air mattress hide-a-bed sofa and swiveling and sliding top free standing table with four store-more chairs are all standard features in most models. Shown here in our standard "Grace Maple" cabinetry with optional rear overhead cabinets in place of the "Sunburst" window and luxurious "Merlot" décor.



You'll enjoy the durability of solid hardwood slide room fascia trim and cabinets, rich fabrics, and decorative safety glass. (Shown here in "Golden Vista" décor)



The optional "Soft Touch" leather air mattress hide-a-bed sofa and built-in hardwood wine rack adds an upscale look and feel to your living room.



The entertainment center provides an area for our JVC home theater system, an optional 32" or 42" LCD TV, fireplace and a hardwood desk top.



# *Prairie Schooner*



The unbelievable kitchen and entertainment slide of this 30FRL model compliments the unique design of this compact and light weight model. We provide all the comforts you need including an easy to use swing arm bracket that swivels the TV to the perfect viewing angle for all seating positions.





You'll love the residential style of this truly functional wrap around kitchen! The high-gloss "Quarry Bluff Granite" solid surface countertops, residential sized stainless sink with filtered drinking water faucet, spice rack, Full size 30" OTR microwave, gas oven, 3 burner cook-top, and optional 12 cubic foot four door refrigerator/freezer provides all the essentials for gourmet chefs to prepare all of their favorite dishes. The huge overhead cabinets with angled glass curio and huge pantry provide luxuries not found in many other brands.



The full height pantry area adds valuable storage space for many kitchen essentials!



# Prairie Schooner



The walk-through bathroom/bedroom suite provides total comfort to your new home with a pillow top mattress, padded headboard w/ wood trim, quilted bedspread and pillow shams, rich overhead cabinets and night stand, and bath lavatory shown with optional solid surface top. (Shown in "Cinnamon" décor)



Bedroom shown with optional pillow package in "Pewter Smoke" décor.



Our bedroom features oversized drawers, washer dryer closet area, vanity/make-up area, optional hair dryer and 20" LCD TV with built-in DVD player.



The "Platinum Package" provides a solid surface bath lavatory and hair dryer to add luxury to your new home.



## POPULAR OPTIONS

### PLATINUM PACKAGE:

- HIGH-GLOSS GEL COATED FIBERGLASS EXT. WALLS
- "BRENTWOOD MAPLE" CHERRY STAINED HARDWOOD CABINETS, STILES AND TRIM
- HIGH-GLOSS SOLID SURFACE BATH LAV TOP
- HIGH INTENSITY SECURITY LIGHTS
- MARBLED RADIUS SHOWER WITH GLASS ENCLOSURE
- FLUORESCENT CEILING LIGHTS
- 80 AMP POWER CONVERTER
- CENTRAL VACUUM SYSTEM
- 3 BULB LIGHT KIT ON CEILING FAN
- PILLOW PACKAGE. THROW RUG, HAIR DRYER
- WET/DRY DUSTBUSTER
- "QUARRY BLUFF" HIGH-GLOSS

SOLID SURFACE COUNTERTOPS IN KITCHEN AREA (REQUIRED)

### ENTERTAINMENT TV PACKAGE:

- 20" LCD TV IN BEDROOM WITH BUILT-IN DVD PLAYER AND QUICK RELEASE BRACKET FOR OUTSIDE VIEWING
- 32" LCD TV

### POWER PACKAGE:

- POWER PATIO AWNING
- POWER REAR STABILIZER JACKS
- FULL BODY PAINT PACKAGE (GOLD/BLACK/BURG OR SILVER/CHAR/BLACK):
- FULL BODY EXTERIOR PAINT
- CHROME EXTERIOR DOOR LATCHES
- BLACK METAL WRAPPED POWER AWNING WITH WIND SENSOR (AVAILABLE ON PLATINUM PACKAGE UNITS ONLY)
- EXTERIOR PAINT PACKAGE

• HIGH-GLOSS GEL COATED FIBERGLASS EXT. WALLS • THROW RUG (KIT)

• THERMAL (DOUBLE PANE) WINDOWS

(NA SUNBURST WINDOW)

• GENERATOR PREP W/ 40 LB. LP BOTTLES

• 5.5 KW ONAN GENERATOR W/ 40 LB. LP BOTTLES

• MAIN ROOM SLIDE OUT AWNING

• BEDROOM SLIDE OUT AWNING

• THIRD ROOM SLIDE OUT AWNING

• FOURTH ROOM SLIDE OUT AWNING (34FLR, 36FQS, 36FSK, AND 36FTE)

• BLACK METAL WRAPPED SLIDE ROOM AWNING UPGRADE (MANDATORY WITH FULL PAINT OPTION)

• POWER PATIO AWNING

• REAR ELECTRIC STAB JACKS

• EXTERIOR REFER

• 12 V HEAT PADS FOR HOLDING TANKS

• MOR/RYPDE PIN BOX

• HEAT PUMP FOR 15K BTU A/C IN LR

• HEAT PUMP FOR 13.5K BTU A/C IN BR

• 13,500 BTU AIR CONDITIONER IN BEDROOM

• DIMPLEX LIVING ROOM FIREPLACE W/ WOOD MANTLE

• 20" LCD TV IN BEDROOM WITH BUILT-IN DVD PLAYER AND QUICK RELEASE BRACKET FOR OUTSIDE VIEWING

• 32" LCD TV IN LR

• 42" LCD TV IN LR

• SWING ARM TV BRACKET

• CENTRAL VACUUM SYSTEM

• FANTASTIC FAN W/TOUCH PAD CONTROLS (LR, KIT, OR BR)

• 30" OTR CONVECTION MICROWAVE OVEN WITH BUILT-IN EXHAUST FAN

• HIGH-GLOSS SOLID SURFACE BATH LAV TOP

• STACKED WASHER/ DRYER

• COMBO WASHER/DRYER

• 12 CUBIC FOOT FOUR DOOR REFER

• SOFT TOUCH LEATHER SOFA

• OTTOMAN FOR SOFA (FABRIC)

• (2) EURO CHAIRS

P/O STD CHAIRS OTTOMAN

• (2) LEATHER LOOK RECLINERS P/O STD CHAIRS

• DESK CHAIR (34FBR, 34FLR, 36FQS, 36FTE)

• SEAMLESS COMPOSITE COUNTERTOPS

• PILLOWTOP KING BED IPO QUEEN BED

• PILLOW PACKAGE

• REAR BAY OVERHEAD CABINETS IPO SUNBURST WINDOW AND SHELF



Includes:

### Roof (R-28)

- R-14 Fiberglass Roof Insulation
- R-14 Thermal Foil Roof Insulation

### Floor (R-32)

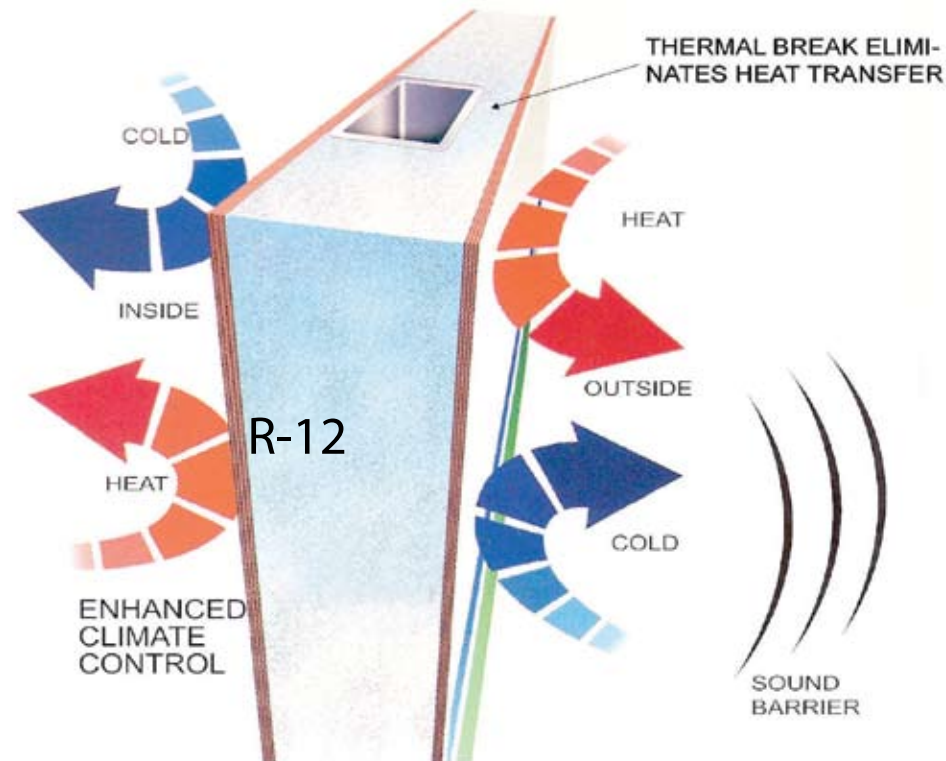
- R-14 Fiberglass Floor Insulation
- R-14 Thermal Foil Underbelly Insulation
- R-4 Floor Decking & Underbelly
- Fully Enclosed Heated Basement, Tank Area Dump Valves
- R-14 Fully Insulated Bath & Bedroom Floor
- Insulated Chassis Frame Rails

&

Deck

- Attic Vents to Remove Moisture

## THERMAL-PANE SIDEWALL CONSTRUCTION



Our unique sidewall construction on all full profile units keeps the interior living space comfortable.

# Prairie Schooner

## Superior Construction

ATTIC VENT



RESIDENTIAL STYLE

Unwanted moisture escapes through our standard "Easy Escape" attic vents that extend the life of your coach.

A residential oversized stainless steel sink is deep enough to wash even the largest pots and pans.



## HIDDEN STRENGTHS

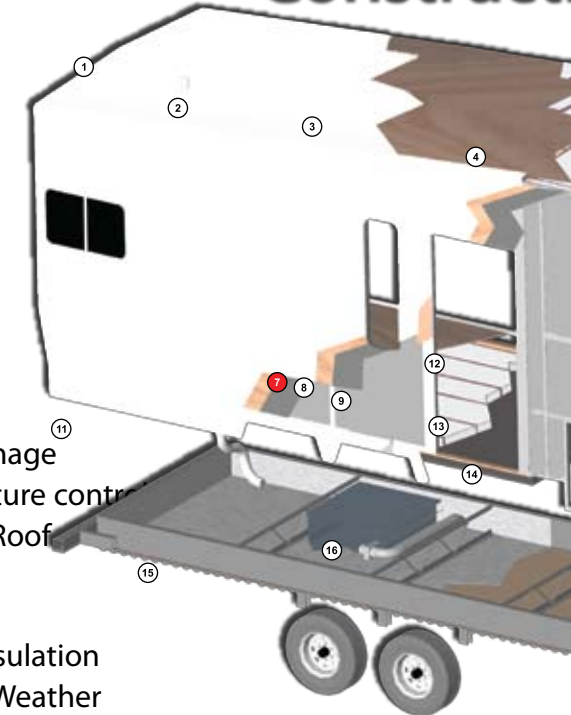
- Huge under-bed storage
- Light-weight welded aluminum construction.
- 6'-2" Main slide ceiling height.
- 44" Slide room depth
- 2" thick vacuum-bond laminated walls w/ solid block foam insulation.
- Recessed step into bathroom.
- Aerodynamic front fiberglass cap w/ Docking Lights & Hitch Mirror
- Durable protective frame coating.
- Full walk-on roof decking.
- Real hardwood cabinet doors, drawers, trim & slide fascia.
- LED readout on 12V fuse panel
- Easy lube axles.
- Fully enclosed and heated underbelly, gate valves and holding tanks.
- Electric slide rooms with interior switches for each room
- 44" dinette booth
- Deepest slide rooms in its class
- One piece large rear bay window
- Residential size stainless steel kitchen sink
- Six panel interior bath door
- Residential linoleum in kitchen and bathroom
- 1/4" thick steel header across all slide room ceilings
- Residential cabinet hardware
- Full-extension drawer guides
- One-piece seamless floor decking & underbelly

## ROOF

1. Crowned Roof improves drainage
2. Attic Vent for improved moisture control
3. Seamless One-Piece Rubber Roof with 12-Year Warranty
4. 7/16" Roof Decking
5. Thick Blanket of Fiberglass Insulation (R-14 std. R-28 with Extreme Weather Insulation Package)
6. 5" Bowed Roof Trusses - 16" on center

## SIDEWALL

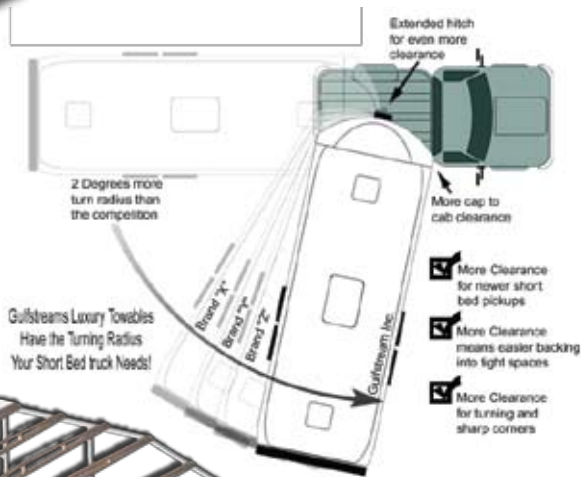
7. Vacuum Bonded Sidewall with Fiberglass Exterior
8. Thick Luan Panel Backer
9. High-Density Block Foam Insulation (R-10 std. R-12 with Thermal-pane Construction)
10. Welded Aluminum Wall Studs
11. Full Radius Fender Skirt Metal



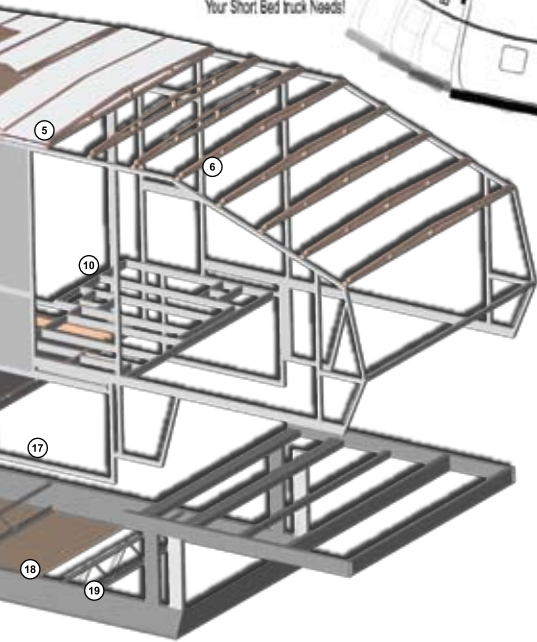
Optional  
HIGH GLOSS  
GELCOAT  
FIBERGLASS



## 88 DEGREE TURNING RADIUS



ion



## FLOOR & SUB-BASEMENT

12. 5/8" Seamless Floor Decking
13. 3" Floor Joists - 12" On Center
14. Vapor Barrier Protective Sheeting
15. 8" & 10" I-Beam Main-rails with Durable Protective Coating
16. Enclosed and Heated ABS Tanks
17. Heated Basement
18. 100% Enclosed Underbelly
19. Spaced Rod and Angle with Z-Bar Supports



## CONVENIENCE CENTER

Gulf Stream luxury fifth wheels are equipped with a convenience center with controls for lights, slides and tank level indicators



## VACUUM-BOND LAMINATED WALLS

Our light weight aluminum framing and solid block foam insulation give superior strength and insulation. The 2" thick wall is put through a 5 step laminating and vacuum bond process ensuring an air-tight and water-resistant bond far superior to other lamination processes.



## A ONE-PIECE STEEL HEADER

Our slide room is anchored together with a one piece (4" x 1/4" thick) steel header. This steel header provides unmatched strength and support which will ensure a square, tight seal every time.

(Please don't try this with any other recreational vehicle besides a Prairie Schooner.)



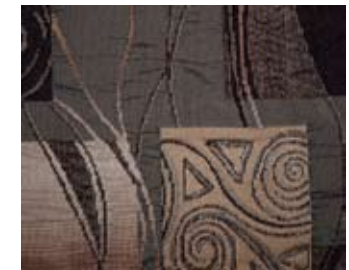
Mocha Slate



Golden Vista



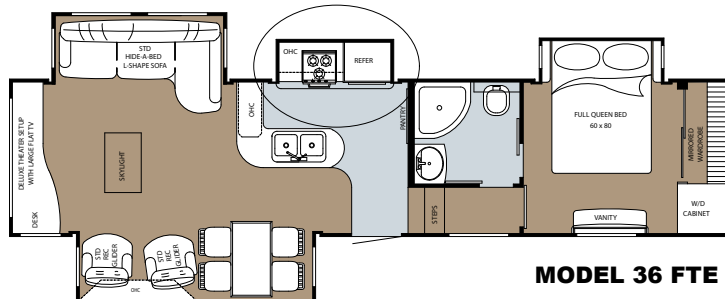
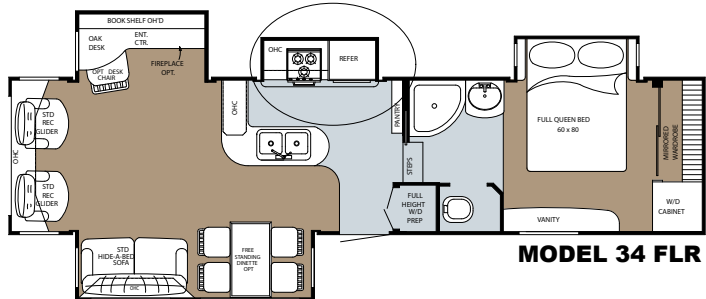
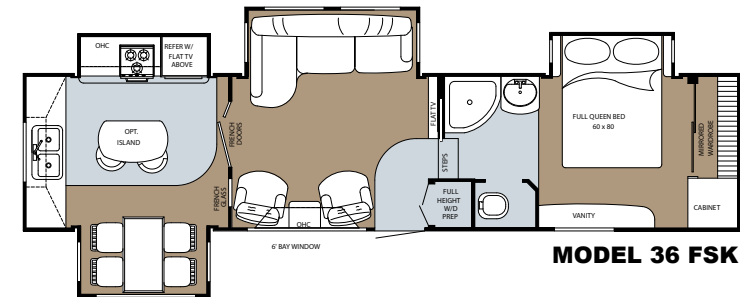
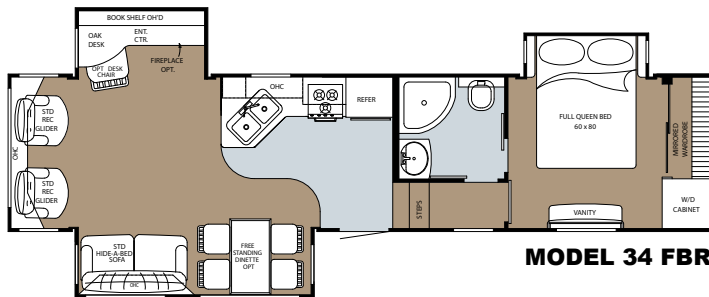
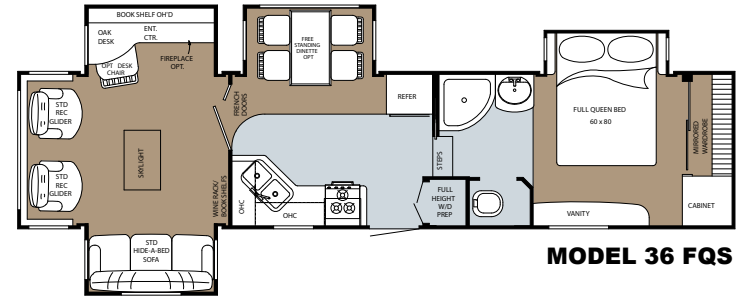
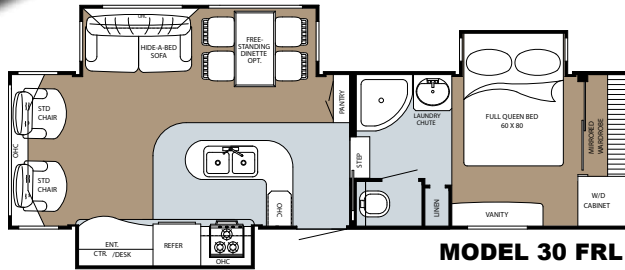
Pewter Smoke



Merlot



# Prairie Schooner



## SPECIFICATIONS

MODEL NAME	30 FRL	34 FBR	34 FLR	36 FTE	36 FQS	36 FSK
Length	32'-6"	35'-10"	36'-6"	37'-6"	37'-6"	37'-6"
Width (without awning)	95"	95"	95"	95"	95"	95"
Height (exterior)	12'-4"	12'-4"	12'-4"	12'-5"	12'-5"	12'-5"
Height (interior)	100"	100"	100"	100"	100"	100"
GVWR	14,430	14,410	14,270	15,500	15,500	15,500
*Dry Weight (approx.)	10,197	11,000	11,522	12,676	12,279	12,760
*Hitch Weight (approx.)	2,430	2,410	2,270	2,220	2,520	2,375
Black Water Tank Cap.	40 gal.	40 gal.	40 gal.	40 gal.	40 gal.	40 gal.
Grey Water Tank Cap.	40 gal.	40 gal.	40 gal.	40 gal.	40 gal.	40 gal.
Fresh Water Tank Cap.	60 gal.	60 gal.	60 gal.	60 gal.	60 gal.	60 gal.
LP Gas Tanks	2x30 lb.	2x30 lb.	2x30 lb.	2x30 lb.	2x30 lb.	2x30 lb.
Furnace (BTU's)	42,000	42,000	42,000	42,000	42,000	42,000
Water Heater	12 gal.	12 gal.	12 gal.	12 gal.	12 gal.	12 gal.
Std. Bed Size	60"x80"	60"x80"	60"x80"	60"x80"	60"x80"	60"x80"

\*NOTE: Weights are approximate and based on standard features. Optional equipment is not included.  
Features and specifications shown may not be available on all models and are subject to change without notice.



## STANDARD FEATURES:

### Exterior:

- "AERO" FRONT CAP DESIGN WITH DUAL DOCKING LIGHTS, HITCH MIRROR, HIGH MOUNT LED LIGHT, AND LOWER AIR DAM FOR BETTER AIR FLOW
- MOLDED FIBERGLASS REAR CAP WITH HIDDEN REINFORCED STEEL BUMPER
- 8 LUG ALUMINUM WHEELS
- EZ LUBE AXLES
- DEEP TINTED SAFETY GLASS
- SMOOTH G-3 VACU-BONDED EXTERIOR FIBERGLASS WALLS
- WELDED ALUMINUM FRAMED WALLS, ROOF AND FLOOR
- THERMAL-PANE R-12 SIDEWALL CONSTRUCTION WITH ½" THERMAL BREAK BETWEEN ALUMINUM WALL STUDS AND EXTERIOR FIBERGLASS
- "EXTREME WEATHER" INSULATION PACKAGE: THERMAL FOIL AND FIBERGLASS INSULATION IN FLOOR (R-32) AND ROOF (R-28)
- FULLY INSULATED BATH AND BEDROOM FLOOR WITH R-14 THERMAL FOIL INSULATION
- FULLY ENCLOSED AND HEATED UNDERBELLY
- FULL WALK-ON ROOF DECKING. ONE PIECE RUBBER ROOF WITH RADIUS EDGE AND 12 YEAR WARRANTY
- FULL LENGTH RAIN GUTTERS WITH DRIP SPOUTS
- ATTIC VENTS ON ROOF
- MOR/RUDE RUBBER SUSPENSION
- EXTENDED HITCH PIN AND NEW PROFILE FRONT CAP DESIGNED FOR BETTER TURNING RADIUS
- STACKED CHASSIS FRONTFRAME RAIL FOR INCREASED BASEMENT STORAGE HEIGHT
- FOLD DOWN FRONT BULKHEAD WALL IN BASEMENT ADDS OVER 20 C.F. OF ADDITIONAL CARGO SPACE
- RUBBERIZED FLOORING IN BASEMENT STORAGE COMPARTMENT
- SIDE SWING BAGGAGE DOORS
- TV PREP IN BASEMENT AREA
- FLASHLIGHT, REPAIR KIT AND FUSE STORAGE TRAYS IN BASEMENT
- STORAGE CLIPS FOR CRANK HANDLES
- 16" RADIAL GOODYEAR TIRES
- 16" SPARE TIRE
- CRANKDOWN SPARE TIRE CARRIER
- ELECTRIC FRONT JACKS
- FRONT FACING SNAP JACKS
- REAR STABILIZER JACKS
- REAR LADDER
- PATIO AWNING
- 30" WIDE RADIUS ENTRY DOOR W/DEAD BOLT LOCK AND SCREEN DOOR
- TRIPLE ENTRY STEPS WITH ENTRYWAY SAFETY LIGHT

- EXTERIOR LIGHTS AT PATIO AREA, ENTRY DOOR, BASEMENT AREA, HITCH, DUMP STATION AND FRONT CAP

### Heating, Cooling, Electrical and Plumbing:

- ELECTRIC DUMP VALVES FOR BLACK AND GRAY TANKS
- 42,000 BTU FURNACE w/ IN FLOOR HEAT DUCTS
- 15,000 BTU AIR CONDITIONER
- PREP FOR 2ND AIR CONDITIONER
- INTERIOR SWITCH COMMAND STATION AT ENTRYWAY
- BATTERY DISCONNECT SWITCH
- EXTERIOR BATTERY COMPARTMENT WILL ACCOMMODATE 2 BATTERIES
- LED INDICATOR LIGHTS FOR 12 VOLT FUSE PANEL
- DUAL 30 LB. LP TANKS WITH AUTO CROSSOVER VALVES
- LP QUICK CONNECT FOR RV GRILL
- DUAL TANK MONITORS (Int. and Ext.)
- EXTERIOR CONVENIENCE COMPARTMENT FOR PLUMBING AND ELECTRICAL CONNECTIONS
- DUAL SATELLITE AND CABLE RG6 CO-AX CONNECTIONS
- OUTSIDE SHOWER
- FULL COACH WATER FILTRATION SYSTEM
- BLACK TANK FLUSH
- SEWAGE HOSE STORAGE COMPARTMENT
- HEATED & ENCLOSED HOLDING TANKS
- WATER HEATER BY-PASS VALVE
- 12 GAL GAS/ELECTRIC DSI WATER HEATER
- 50 AMP SERVICE W/MARINCO DETACHABLE POWER CORD
- 60 AMP POWER CONVERTER

### Safety:

- SWING AWAY ENTRY ASSIST HANDLE
- INTERIOR ENTRYWAY HARDWOOD DOOR HANDLE
- GRAB HANDLE AT BATHROOM STEP AREA
- C.O. DETECTOR
- DUAL SECURITY LIGHTS
- WALL MOUNT FIRE EXTINGUISHER
- POWER BATH VENT
- L.P. DETECTOR
- SMOKE DETECTOR
- HEAVY DUTY BRAKES WITH BREAKAWAY SAFETY SYSTEM
- REAR BACK-UP LIGHTS
- 4" x 4" STEEL REAR BUMPER HIDDEN UNDER FIBERGLASS CAP

### Interior:

- WAINSCOATED FEATURE WALL AT ENTRYWAY

- "GRACE MAPLE" SOLID HARDWOOD CABINET DOORS AND DRAWERS
- "LEATHER TOUCH" CEILING PANELS

- LINOLEUM FLOORING AT ENTRYWAY, KITCHEN & BATH AREAS
- ENTRYWAY COAT CLOSET/ STACKABLE WASHER DRYER CLOSET IN SEVERAL MODELS
- DECORATIVE WALL MIRROR AT ENTRYWAY (MOST MODELS)
- RESIDENTIAL SIZED STAINLESS STEEL KITCHEN SINK WITH HIGH RISE FAUCET
- (2) ACRYLIC SINK COVERS
- DRINKING WATER FAUCET AT KITCHEN SINK
- LARGE POTS & PANS DRAWERS UNDER RANGE IN MOST MODELS
- 3-BURNER HIGH OUTPUT RANGE W/22" OVEN AND RANGE TOP COVER
- 30" OTR MICROWAVE W/BUILT IN RANGE VENT
- LARGE 8 C.F. DOUBLE DOOR REFRIDGERATOR
- 6-PANEL HARDWOOD REFER DOOR INSERTS
- LARGE PANTRY AREA IN MOST MODELS
- SILVERWARE TRAY
- PORTABLE TRASH CAN
- SLIDING AND SWIVEL TOP FREE STANDING DINETTE W/ (4) DELUXE STORE-MORE CHAIRS
- CENTRAL DUCTED AIR CONDITIONER w/"QUICK COOL"
- JVC SURROUND SOUND DVD/CD/AM/FM STEREO W/(5) SPEAKERS & SUBWOOFER
- LR AND BR TV PREP W/ ANTENNA W/AMP & BOOST
- TEXTURED "PIN DOT" CARPET & PAD IN LR, DINING AND BR AREAS
- DECORATIVE CEILING FAN WITH LIGHT KIT
- PLEATED DAY/ NIGHT SHADES AND FABRIC WINDOW COVERINGS THROUGHOUT
- SKYLIGHT IN LIVING AREA WITH PLEATED SHADE
- "SUNBURST" ARCHED WINDOW IN REAR WALL OVERHEAD AREA
- VINYL WALL PAPER BORDER THROUGHOUT
- 60" x 80" AIR MATTRESS HIDE-A-BED SOFA W/ STORAGE DRAWER
- OVERHEAD CABINETS WITH TEMPERED SAFETY GLASS INSERTS. GLASS HAS BACKING TO HIDE STORAGE ITEMS FROM VIEW
- (2) LARGE OVERSTUFFED DELUXE RECLINER GLIDERS WITH HARDWOOD END TABLE AND CHAIR RAIL WALL TRIM
- (2) SWING ARM READING LIGHTS FOR RECLINERS (MOST MDLS)
- ELECTRIC SLIDE ROOM MECHANISMS W/ FLUSH FLOOR AND INDIVIDUAL SWITCHES INSIDE FOR EACH ROOM
- ELECTRIC TV LIFT MECHANISM (36FTE)
- 100" INTERIOR CEILING HEIGHT THROUGHOUT ENTIRE LR AND KITCHEN AREAS

- 6'5" HEIGHT IN MAIN SLIDEOUT ROOMS
- 44" SLIDEOUT DEPTH WITH 1" THICK SLIDE ROOM FLOORS
- SOLID HARDWOOD TRIM ON SLIDEROOM FASCIA, DOOR CASING, CROWN MOULDING AND CABINET TRIM

### Bath and Bedroom Area:

- 6'5" CEILING HEIGHT THROUGHOUT BATHROOM AND BEDROOM AREA
- CHINA TOILET
- MARBLED SINK AND 34" X 34" NEO-ANGLE SHOWER WITH GLASS ENCLOSURE
- SKY LIGHT IN SHOWER
- PLATINUM BATH HARDWARE AND FIXTURES
- MIRRORED MEDICINE CABINET W/ 3 BULB VANITY LIGHT
- OVER THE TOILET STORAGE CABINET W/ MIRRORED DOOR
- POWER BATH VENT
- HEAT AND A/C DUCTS IN BEDROOM AND BATH AREA
- RAISED 6-PANEL BATH DOOR(S)
- RAISED 6-PANEL BEDROOM PARTITION DOOR FOR SIDE AISLE BATH MODELS
- ACCORDION PRIVACY DOOR FOR BEDROOM IN WALK-THROUGH BATH MODELS
- FULL WIDTH FRONT CLOSET WITH DUAL-TEIR WIRE SHELVING AND HANGING SPACE, SHOE RACK AND SLIDING MIRRORED DOORS
- HIDDEN FLOOR SAFE IN CLOSET
- CLOSET WITH LOUVERED DOORS AND HANGING ROD IN BR. (COMBO WASHER/ DRYER PREP IN THIS AREA ON ALL SIDE AISLE MODELS)
- LARGE DRESSER DRAWERS WITH FULL EXTENSION DRAWER GUIDES
- TV CONNECTIONS IN BEDROOM
- BEDSPREAD W/ATTACHED SHAM AND PILLOWS
- OAK HEADBOARD W/FABRIC INSERT
- HARDWOOD OVERHEAD CABINETS IN BEDROOM SLIDE ROOM
- NIGHT STANDS AND BEDSIDE SHELVES
- 110 VOLT OUTLET ON BEDSIDE WALL
- VANITY AREA W/ 110 VOLT OUTLET IN BR
- PILLOWTOP 60" X 80" QUEEN BED W/GAS LIFT ASSIST STRUTS FOR UNDER BED STORAGE
- 12" DEEP ABS STORAGE PAN UNDER BED DECK



A FULL-LINE RV  
MANUFACTURER



FAMILY OWNED SINCE 1983



### GULF STREAM COACH EXCEPTIONAL VALUE...

Gulf Stream has been awarded the prestigious Platinum Recreational Vehicle Manufacturer Quality & Productivity Award in recognition of our commitment to producing quality recreational vehicles.

Your family and friends will feel safe and comfortable in a Gulf Stream fifth wheel. Compare... and you will see the exceptional value of Gulf Stream fifth wheels.

### GULF STREAM FACILITIES...

Located in the heart of the Amish country, the complex, along with Gulf Stream's affiliate, Fairmont Homes, Inc., covers over 400 acres and includes more than 1.5 million square feet of state-of-the-art manufacturing facilities. With over 20 years of manufacturing experience producing quality Recreational Vehicles, Gulf Stream is the leading manufacturer of high quality and high value RV products that are distributed through a partnership relation with independent dealers who are focused on meeting customer expectations.

### FEATURING A 2-YEAR WARRANTY!

In addition to our standard one year warranty, Gulf Stream Coach, Inc., offers an exclusive 24 month warranty on structural components. In addition, major component manufacturers are providing 24 month warranties on their products installed in Gulf Stream units such as refrigerators, antenna, furnace, water heater, air conditioner, awning, range, microwave and more. See the official written Gulf Stream Coach, Inc., Warranty for details.

\*for purposes of this warranty, "structural components" shall be limited to the structure of the side walls, front and back walls, roof and floor.

Post Office Box 1005



NAPPANEE, IN 46550

• YOUR GULF STREAM COACH DEALER •



FOR MORE DETAILED INFORMATION...  
OR CALL 1-800-765-8787-EXT. 3288

For more information and available options, contact your local Gulf Stream dealer, [www.gulfstreamRV.com](http://www.gulfstreamRV.com) or Gulf Stream Coach, Inc. Gulf Stream Coach, Inc., reserves the right to make changes in prices, colors, materials, components and specifications and to discontinue models at any time without notice or obligation. Gulf Stream Coach, Inc., assumes no responsibility for any error in type or print reproduction of specifications or floorplans in this brochure. Photographs may show equipment or items that are optional and are not included in the purchase price of the coach. Test drive and review a current model at your nearest Gulf Stream dealer. © 2002 Gulf Stream Coach, Inc., Nappanee, Indiana U.S.A.