



CONQUEST
MOTORHOMES

Off the map, **on the mark.**

**BTOURING
CRUISER**
BY CONQUEST MOTORHOMES

Changing
the Class C
Market!



2008 B Touring Cruiser

CONQUEST
MOTORHOMES



Off the map, **on the mark.**



LIVING CONVENIENCE...

The BT GX-2 takes this Class C Cruiser to a new level offering 7 ft. ceiling height and a widebody construction. We take pride in differentiating ourselves to offer you quality products.



5291 Dream Dinette gives you the best comfort in the industry with comfort-plus seating made with steel and springs, not plywood and foam. The dinette also converts to another sleeping area and the flip-up seats allow access to under seat storage.



5291 Kitchen Galley has high-end Curvtec® cabinetry, convection microwave, 3-burner top and 6 gallon water heater.



The All NEW Skyview Cap!

Skyview Cap offers an alternative view of the roads ahead. The Skyview is an option on all BT GX-2 floorplans.



5291 Master Bedroom features an upgraded queen size mattress and beautiful hardwood cabinetry with built-in LCD color tv.





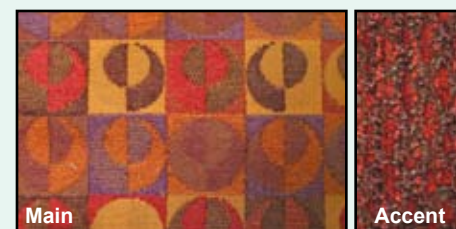
Decor



Harvest



Driftwood



Jewel

Off the map, on the mark.

Specifications and Floorplans

We map out our standards and options so that you can make your decisions wisely. Check out our wide range of floorplans and sleeping arrangements and choose the best to suit your traveling needs.



CHASSIS

- 159" WB CHEVY, VORTEC 6.0 ENGINE, 57 GAL. FUEL TANK

DECOR

- EURO STYLE CABINETS
- FABRIC CEILING
- WINDOW TREATMENTS
- OVERHEAD READING LIGHTS
- FLUORESCENT LIGHT OVER KITCHEN SINK
- ROLL GOOD THROUGHOUT

EXTERIOR

- SLIDE OUT ROOM (SOFA) (5272)
- SLIDE OUT ROOM (BEDROOM) (5272, 5291)
- SLIDE OUT ROOM (KITCHEN/SOFA) (5291)
- ATRIUM SLIDE OUT ROOM (DINETTE) (5291)
- WELDED ALUMINUM CAGE
- FIBERGLASS FRONT CAP & WINGS
- LAMINATED FLOOR STEEL FRAME FLOOR W/METAL UNDERBELLY
- (2) SLIDE OUT TOPPERS (5272, 5291)
- REAR WINDOW
- RADIUS TINTED WINDOWS
- STAINLESS STEEL WHEEL INSERTS
- ACRYLIC ENTRY DOOR ASSIST BAR
- FOAM SEAL & UNDERCOATING

POWER

- AUXILIARY BATTERY
- CONVERTER W/CHARGER & AUTO CHANGE OVER KIT
- GENERATOR PREP
- BATTERY DISCONNECT
- 30' POWER CORD
- 4.0 GENERAC GENERATOR

HEATING AND COOLING

- DASH A/C
- 15,000 BTU LOW PROFILE DUCTED AC
- 30,000 BTU FURNACE

BATH

- BI-FOLD SHOWER DOOR & SURROUND (5272)
- NEO-ANGLE GLASS SHOWER DOOR (5291)
- POWER BATH VENT

ELECTRICAL

- TV CABINET
- CD PLAYER
- PLATINUM LIGHTS IN BEDROOM
- MONITOR PANEL
- GENERATOR SWITCH & HOUR METER
- TV ANTENNA W/AMP & BOOST

FURNISHINGS

- 2-WAY D/P SEATS
- D/S JACK KNIFE SOFA (NA 5291)
- D/S H-A-B SOFA (5291)
- SINGLE BARREL CHAIR (PS) (5272)
- DINETTE BOOTH BED (PS) (5291)
- DREAM DINETTE

APPLIANCES

- OTR CONVECTION MICROWAVE W/3-BURNER TOP
- 6 GAL ELECTRONIC IGNITION WATER HEATER W/BY-PASS VALVE
- SM. 2-WAY DBL DOOR REFER
- LP GAS TANK
- CARBON MONOXIDE DETECTOR
- LP LEAK DETECTOR
- G-PANEL REFER INERTS

POPULAR OPTIONS

- 158" WB, FORD E-45, V-10, 6.8L ENG., 55 GAL. FUEL TANK & POWER LOCKS & WINDOWS
- 14,500 GVWR, 158" WB, FORD E-45, 6.0 DSL DIESEL

TOURING PACKAGE UPGRADE (REQ)

- FIBERGLASS RUNNING BOARDS
- FIBERGLASS ROOF
- HARDWOOD STILES
- ELECTRIC STEP
- H-DUAL DUCT SYSTEM
- DELUXE LAMINEX STEP
- CENTRAL VAC SYSTEM
- ELECTRIC MAIN AWNING

XL UPGRADE PACKAGE

- WOOD DASH
- FLUORESCENT LIGHTING
- SOLID SURFACE KITCHEN COUNTERTOP
- G-SOUND W/DVD
- VINYL CEILING

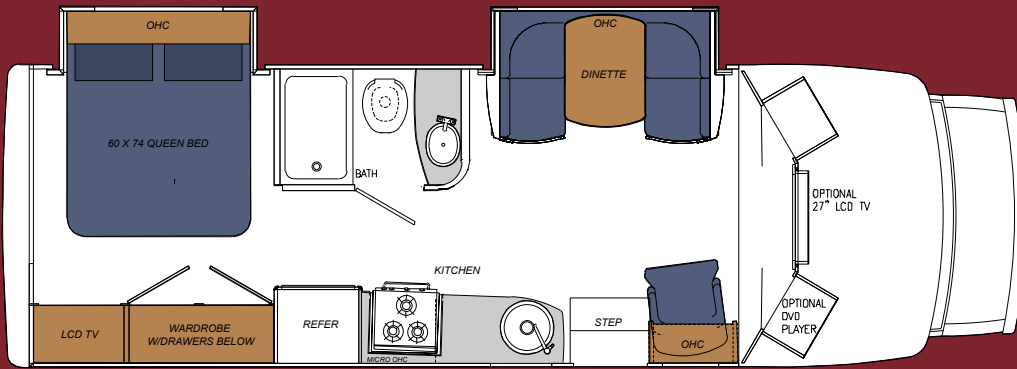
DRIVER CONVENIENCE PKG.

- BACKUP MONITOR
- BACKUP ALARM
- KEYLESS ENTRY SYSTEM (NA CHEVY)

- 4.0 ONAN GENERATOR
- 3.6 DIESEL GENERATOR W/LP CONVERSION
- 3.0 DIESEL GENERATOR
- HEATED HOLDING TANKS (NA W/CSA)
- SKYVIEW CAP W/SHADE
- REAR LADDER
- 5000 LB HITCH W/PLUG
- SLICK FIBERGLASS EXTERIOR WALLS
- EXTERIOR PAINTED SKIRT AREA
- FULL BODY PAINT W/SUPER SLICK EXTERIOR (TAN, SILVER, LUX FORD, LUX CHEVY)

- HEATED & REMOTE MIRRORS
- LCD COLOR TV IN BEDROOM (5272, 5291)
- LCD COLOR TV WITH REMOTE
- DVD PLAYER (NA W/XL PKG)
- EMERGENCY START SWITCH
- (7) FLUORESCENT CEILING LIGHTS (NA W/XL PKG)
- DSS PREP
- 6-WAY POWER SOFT TOUCH D/P SEATS IPO 2-WAY CLOTH SEATS (NA W/CHEVY OR WORKHORSE CHASSIS OPTIONS)
- SOFT TOUCH POWER LOUNGER SOFA (DS) (NA 5291)
- SOFT TOUCH H-A-B SOFA (DS) (5291)
- COMFORT BOOTH DINETTE IPO DS SOFA (5272)
- UPGRADE COMFORT PLUS QUEEN MATTRESS
- RANGE COVER
- SPARE TIRE AND CARRIER
- OUTSIDE SHOWER
- UPGRADED WOOD DASH (NA W/XL PACKAGE)
- BLACK FLUSH TANK

MODEL 5272 GX2



Chassis	Workhorse/Ford E450
Engine	V-8 /V-10, 6.8 Liter
GVWR	14,050/14,500
Wheelbase	197"/196"
Length	28'4" /27' 11"
Exterior Height	10' 4"
Exterior Width	96"
Interior Height	77"
Interior Width	91.25"
Fuel	57 Gal./ 57 Gal.
Black	30 Gal./38 Gal.
Grey	38 Gal.
Fresh	38 Gal
LP Gas Tank	42 Lbs.
Furnace	30,000 btu.
Water Heater	6 Gal.
Basement Storage	26.27 cu. ft.

Exterior Paint Options

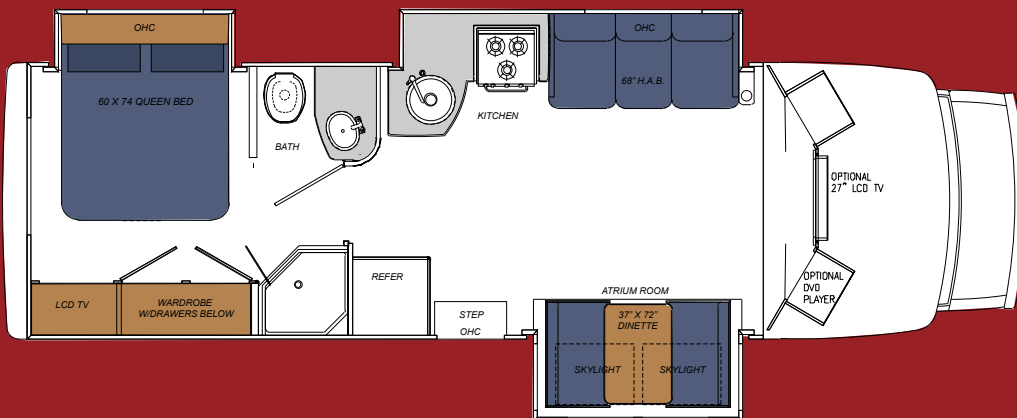


Standard Exterior Graphics



Optional Exterior Graphics

MODEL 5291 GX2



Chassis	Workhorse/Ford E450
Engine	V-8 /V-10, 6.8 Liter
GVWR	14,050/14,500
Wheelbase	209"/208"
Length	30'11" /30' 6"
Exterior Height	10' 4"
Exterior Width	96"
Interior Height	77"
Interior Width	91.25"
Fuel	57 Gal./55 Gal.
Black	32 Gal.
Grey	38 Gal.
Fresh	38 Gal
LP Gas Tank	42 Lbs.
Furnace	30,000 btu.
Water Heater	6 Gal.
Basement Storage	39.41 cu. ft.

Off the map, **on the mark.**

 **LIVING CONVENIENCE...**

The most recognized name in the B Touring Category!
The BT MB on a Sprinter Chassis gives you one more reason
to desire an experience in a BT!

NEW!
BT^{TOURING}
CRUISER
MB



Bedroom/Bath gives you plenty of space to unwind with the upgraded comfort plus queen mattress and overhead cabinetry.



Kitchen Galley is complete with a solid surface countertop, 3-burner top convection range and plenty of lighting.



Overhead Entertainment Center features a large flat screen TV, surround sound and plentiful CD/DVD storage. An optional DVD player is available.

Mercedes-Benz
powered





Decor



Main

Accent



Carpet

Emerald



Main

Accent



Carpet

Tan



Main

Accent



Carpet

Remington

Off the map, **on the mark.**

Specifications and Floorplans

We map out our standards and options so that you can make your decisions wisely. Check out our wide range of floorplans and sleeping arrangements and choose the best to suit your traveling needs.

NEW!
BTouring
CRUISER
MB

CHASSIS

- C3500 SPRINTER CAB & CHASSIS

DECOR

- HARD ROCK MAPLE INTERIOR W/M&T DOORS
- FABRIC CEILING
- OVERHEAD READING LIGHTS
- FLUORESCENT LIGHT OVER KITCHEN SINK
- ROLL GOODS THROUGHOUT

EXTERIOR

- WELDED ALUMINUM CAGE
- FIBERGLASS FRONT CAP & WINGS
- LAMINATED FLOOR STEEL FRAME FLOOR W/METAL UNDERBELLY
- REAR WINDOW
- FULLY INTEGRATED ACRYLIC WINDOWS
- STAINLESS STEEL WHEEL INSERTS
- ACRYLIC ENTRY DOOR ASSIST BAR
- FOAM SEAL & UNDERCOATING

POWER

- AUXILIARY BATTERY
- CONVERTER W/CHARGER & AUTO CHANGE OVER KIT
- GENERATOR PREP
- BATTERY DISCONNECT
- 30' POWER CORD

HEATING AND COOLING

- DASH A/C
- 15,000 BTU LOW PROFILE DUCTED AC
- 25,000 BTU FURNACE

BATH

- POWER BATH VENT

MISCELLANEOUS

- SPARE TIRE & CARRIER

ELECTRICAL

- TV CABINET
- CD PLAYER
- MONITOR PANEL
- GENERATOR SWITCH & HOUR METER
- TV ANTENNA W/AMP & BOOST

FURNISHINGS

- 2-WAY D/P SEATS
- DREAM DINETTE

APPLIANCES

- OTR CONVECTION MICROWAVE W/3-BURNER TOP
- 6 GAL ELECTRONIC IGNITION WATER HEATER W/BY-PASS VALVE
- SM. 2-WAY DBL DOOR REFER
- LP GAS TANK
- CARBON MONOXIDE DETECTOR
- LP LEAK DETECTOR

POPULAR OPTIONS

TOURING PACKAGE UPGRADE (REQ)

- FIBERGLASS ROOF
- HARDWOOD STILES
- ELECTRIC STEP
- H-DUAL DUCT SYSTEM
- DELUXE LAMINEX STEP
- CENTRAL VAC SYSTEM
- ELECTRIC MAIN AWNING

XL UPGRADE PACKAGE

- FLUORESCENT LIGHTING
- SOLID SURFACE KITCHEN COUNTERTOP
- G-SOUND W/DVD
- VINYL CEILING

DRIVER CONVENIENCE PKG.

- BACKUP MONITOR
- BACKUP ALARM

REAR LADDER

5000 LB HITCH W/PLUG

EXTERIOR PAINTED SKIRT AREA

FULL BODY PAINT (TAN, SILVER, LUXURY PAINT)

LCD COLOR TV WITH REMOTE

DVD PLAYER (NA W/XL PKG)

(7) FLUORESCENT CEILING LIGHTS (NA W/XL PKG)

DSS PREP

SOFT TOUCH POWER LOUNGER SOFA (DS)

OUTSIDE SHOWER

BLACK FLUSH TANK

HEATED HOLDING TANK (N/A W/CSA)

RANGE COVER (N/A W/XL PKG)

3.0 DIESEL GENERATOR

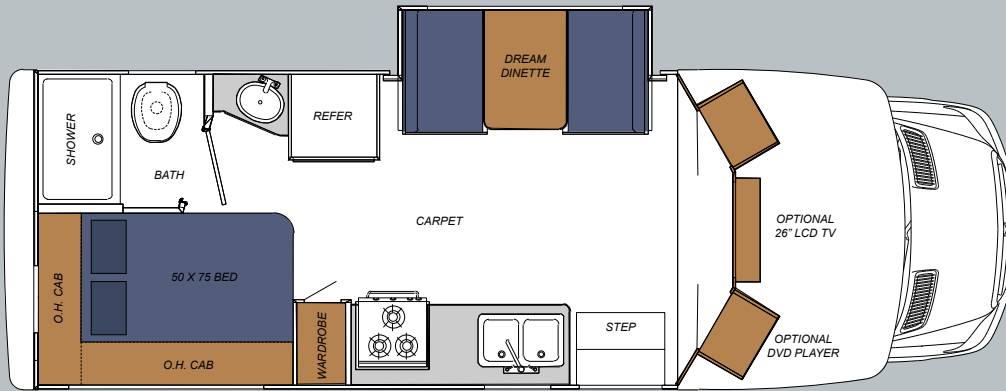
Mercedes-Benz
powered

Exterior Paint Options



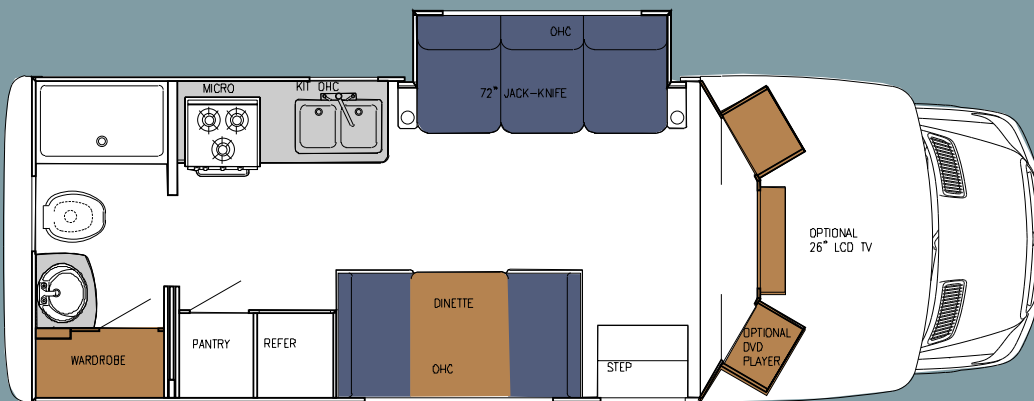
Standard Exterior

MODEL 5234 MB



Chassis	Freightliner
Engine	V6
GVWR	11,030
Wheelbase	170"
Length	24'9"
Exterior Height	TBD
Exterior Width	96"
Interior Height	84.25"
Interior Width	91.25"
Fuel	26 Gal.
Black	33 Gal.
Grey	34 Gal.
Fresh	32 Gal.
LP Gas Tank	68 Lbs.
Furnace	25,000 btu.
Water Heater	6 Gal.
Basement Storage	33.08 cu. ft.

MODEL 5232 MB



Chassis	Freightliner
Engine	V6
GVWR	11,030
Wheelbase	170"
Length	24'9"
Exterior Height	TBD
Exterior Width	96"
Interior Height	84.25"
Interior Width	91.25"
Fuel	26 Gal.
Black	TBD
Grey	TBD
Fresh	TBD
LP Gas Tank	68 Lbs.
Furnace	25,000 btu.
Water Heater	6 Gal.
Basement Storage	TBD

Holding tank capacities (both fresh water and waste water) are volume calculations based on overall tank dimensions. The capacities may differ from published calculations due to the result of tank installation, tank material variation, tank fitting locations and other plumbing variables.

Off the map, **on the mark.**

➤ LIVING CONVENIENCE...

Our spacious living quarters feature a well equipped galley, space saving entertainment center, stain resistant plush carpet, comfort plus furniture, and H-ducted ventilation system giving you all the comforts you would enjoy at home.



5291 Comfort Plus Dinette

(shown above in the Tan decor) with patented sun room offers a panoramic view and opens the coach to give you a wide open feeling. Our skylights are tinted to keep the UV light out while letting natural light in. Comfort Plus dinettes use metal spring cushion supports.



Patented



5291 Sofa/Kitchen Galley Slide

is complete with a solid surface countertop, 3-burner top convection range and plenty of lighting.



The XL Package gives you more high end features that are generally only found in high dollar Class A Motorhomes. Package Includes: Solid Surface Kitchen Countertops, Fluorescent Lighting, Vinyl Ceiling, G-sound Surround Sound Speakers with DVD Player and Burled Woodgrain Dash.





Decor



Main

Accent



Carpet

Emerald



Main

Accent



Carpet

Tan



Main

Accent



Carpet

Remington

*Shown with Chevy Cab Area

Off the map, **on the mark.**

Specifications & Floorplans...

We map out our standards and options so that you can make your decisions wisely. Check out our wide range of floorplans and sleeping arrangements and choose the best to suit your traveling needs.



CHASSIS

- 158" WB, FORD E-45 V-10, 6.8L ENG., 55 GAL FUEL TANK & POWER LOCKS & WINDOWS

DECOR

- HARD ROCK MAPLE INTERIOR W/M&T DOORS
- FABRIC CEILING
- WINDOW TREATMENTS
- OVERHEAD READING LIGHTS
- FLUORESCENT LIGHT OVER KITCHEN SINK

EXTERIOR

- SLIDE OUT ROOM (SOFA) (5272)
- SLIDE OUT ROOM (BEDROOM)
- SLIDE OUT ROOM (KITCHEN/SOFA) (5291)
- ATRIUM SLIDE OUT ROOM (DINETTE) (5291)
- WELDED ALUMINUM CAGE
- FIBERGLASS FRONT CAP & WINGS
- LAMINATED FLOOR STEEL FRAME FLOOR W/METAL UNDERBELLY
- (2) SLIDE OUT TOPPERS
- REAR WINDOW
- RADIUS TINTED WINDOWS
- STAINLESS STEEL WHEEL INSERTS
- ACRYLIC ENTRY DOOR ASSIST BAR
- FOAM SEAL & UNDERCOATING

POWER

- AUXILIARY BATTERY
- CONVERTER W/CHARGER & AUTO CHANGE OVER KIT
- GENERATOR PREP
- BATTERY DISCONNECT
- 30' POWER CORD
- 4.0 GENERAC GENERATOR

HEATING AND COOLING

- DASH A/C
- 15,000 BTU LOW PROFILE DUCTED AC
- 30,000 BTU FURNACE

BATH

- BI-FOLD SHOWER DOOR & SURROUND (5272)
- NEO-ANGLE GLASS SHOWER DOOR (5291)
- POWER BATH VENT

ELECTRICAL

- TV CABINET
- CD PLAYER
- PLATINUM LIGHTS IN BEDROOM
- MONITOR PANEL
- GENERATOR SWITCH & HOUR METER
- TV ANTENNA W/AMP & BOOST

FURNISHINGS

- 2-WAY D/P SEATS
- D/S JACK KNIFE SOFA (NA 5291)
- D/S H-A-B SOFA (5291)
- SINGLE BARREL CHAIR (PS)(5272)
- DINETTE BOOTH BED (PS) (5291)

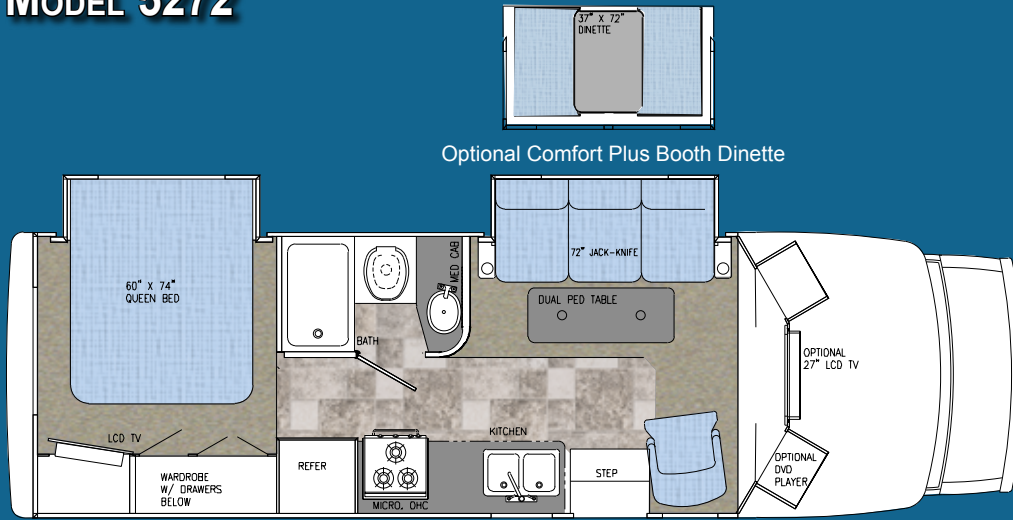
APPLIANCES

- OTR CONVECTION MICROWAVE W/3-BURNER TOP
- 6 GAL ELECTRONIC IGNITION WATER HEATER W/BY-PASS VALVE
- SM. 2-WAY DBL DOOR REFER
- LP GAS TANK
- CARBON MONOXIDE DETECTOR
- LP LEAK DETECTOR

POPULAR OPTIONS

- 159" WB, CHEVY VORTEC 6.0 ENGINE, 57 GALLON FUEL TANK
 - 14,500 GVWR, 158" WB, FORD E-45, 6.0 DIESEL ENGINE
 - TOURING PACKAGE UPGRADE (REQ)**
 - FIBERGLASS RUNNING BOARDS
 - FIBERGLASS ROOF
 - HARDWOOD STILES
 - ELECTRIC STEP
 - H-DUAL DUCT SYSTEM
 - DELUXE LAMINEX STEP
 - CENTRAL VAC SYSTEM
 - ELECTRIC MAIN AWNING
 - XL UPGRADE PACKAGE**
 - WOOD DASH
 - FLUORESCENT LIGHTING
 - SOLID SURFACE KITCHEN COUNTERTOP
 - G-SOUND W/DVD
 - VINYL CEILING
 - DRIVER CONVENIENCE PKG.**
 - BACKUP MONITOR
 - BACKUP ALARM
 - KEYLESS ENTRY SYSTEM (NA CHEVY)
 - 4.0 ONAN GENERATOR
 - 3.0 DIESEL GENERATOR (5272)
 - HEATED HOLDING TANKS (NA W/CSA)
 - REAR LADDER
 - 5000 LB HITCH W/PLUG
 - SLICK FIBERGLASS EXTERIOR WALLS
 - EXTERIOR PAINTED SKIRT AREA
 - FULL PAINT W/SUPER SLICK EXTERIOR (TAN, SILVER, LUX FORD, LUX CHEVY)
 - HEATED & REMOTE MIRRORS
 - LCD COLOR TV IN BEDROOM
 - LCD COLOR TV WITH REMOTE
 - DVD PLAYER (NA W/XL PKG)
 - EMERGENCY START SWITCH
- (7) FLUORESCENT CEILING LIGHTS (NA W/XL PKG)
 - DSS PREP
 - 6-WAY POWER SOFT TOUCH D/P SEATS IPO 2-WAY CLOTH SEATS (NA W/CHEVY OR WORKHORSE CHASSIS OPTIONS)
 - SOFT TOUCH POWER LOUNGER SOFA (DS) (NA 5291)
 - COMFORT PLUS BOOTH DREAM DINETTE IPO DS SOFA (5272)
 - UPGRADE COMFORT PLUS QUEEN MATTRESS
 - SOFT TOUCH H-A-B SOFA (DS) (5291)
 - SOFT TOUCH (DS) SOFA IPO J-KNIFE SOFA
 - RANGE COVER
 - OUTSIDE SHOWER
 - BLACK FLUSH TANK
 - UPGRADED WOOD DASH (NA W/XL PACKAGE)
 - ROLL GOODS THROUGHOUT
 - SPARE TIRE & CARRIER

MODEL 5272



Chassis	Chevy/Ford E-450 Option
Engine	V-8/V-10, 6.8 Liter
GVWR	14,050
Wheelbase	197"/196"
Length	28'- 4" /27' 11"
Exterior Height	10'- 4"
Exterior Width	96"
Interior Height	77"
Interior Width	91.25"
Fuel	57 Gal./ 55 Gal.
Black	30 Gal./38 Gal.
Grey	38 Gal.
Fresh	38 Gal
LP Gas Tank	42 Lbs.
Furnace	30,000 btu.
Water Heater	6 Gal.
Basement Storage	26.27 cu. ft.

Exterior Paint Options



Standard Exterior Graphics



Optional Painted Skirt



Optional Tan Full Paint Graphics



Optional Silver Full Paint Graphics



Optional Luxury Chevy



Optional Luxury Ford

MODEL 5291



Chassis	Chevy/Ford E-450 Option
Engine	V-8/V-10, 6.8 Liter
GVWR	14,050
Wheelbase	209"/208"
Length	30' 11"/30' 6"
Exterior Height	10' 4"
Exterior Width	96"
Interior Height	77"
Interior Width	91.25"
Fuel	57 Gal./55 Gal.
Black	32 Gal.
Grey	38 Gal.
Fresh	38 Gal
LP Gas Tank	42 Lbs.
Furnace	30,000 btu.
Water Heater	6 Gal.
Basement Storage	39.41 cu. ft.

Holding tank capacities (both fresh water and waste water) are volume calculations based on overall tank dimensions. The capacities may differ from published calculations due to the result of tank installation, tank material variation, tank fitting locations and other plumbing variables.

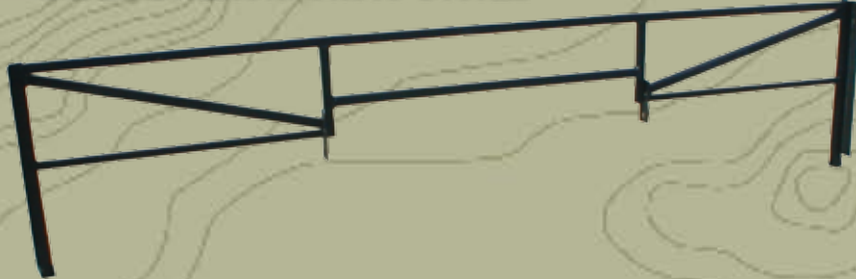
Off the map, **on the mark.**

➔ CONSTRUCTION...

Quality, Comfort, Strength and Value are four great words to describe our mind set while designing and constructing the conquest lineup of products. You can see and feel the quality and attention to detail we gave every component. From the strength of our foundation, roof, floor and sidewalls, down to the comfort of our seat cushions, nothing was skipped.



SUPER STRENGTH TRUSS SYSTEM



The super strength truss system is unmatched in the class C industry. The structural subfloor foundation begins by welding a network of steel web trusses to the chassis rail. Specifically designed to distribute and transfer the tremendous forces from the coach to the chassis rail these trusses are individually tested to withstand 6,000 pounds each.

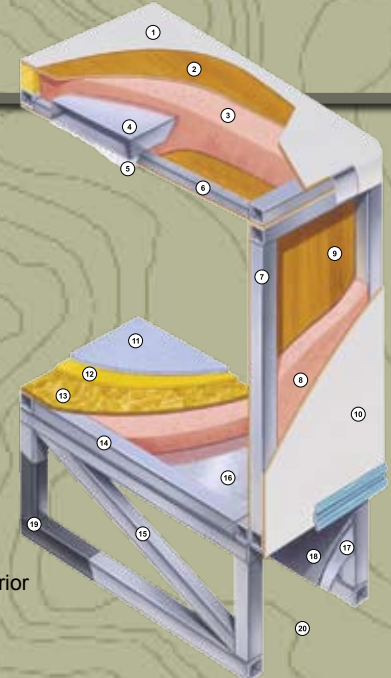
When the chassis is stretched, Gulf Stream stands alone in the industry by using a full (6") C channel extension versus the traditional 4" or less. This practice adds to the strength of the foundation and offers peace of mind that towing is safe on an extension that is true to the chassis.

6" C CHANNEL EXTENSION

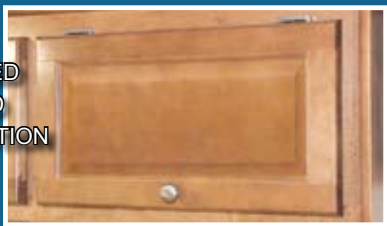


B Touring Cruiser, Dare to Compare

1. Seamless Fiberglass Flexroof Designed to Resist Staining and Maintain Quality Appearance; Dissipates Heat and Prevents Tree Limbs from Tearing or Scratching Roof.
2. Luan Decking for Additional Strength.
3. Molded, High Density EPS (Expanded Polystyrene) Roof Brick Insulation - Provided Consistent Insulation Value as well as Superior Dimensional Rigidity.
4. One-Piece Formed Aluminum Air Conditioning Duct, Completely Surrounded By EPS Insulation.
5. Bubble-Wrapped Foil Insulation Provides Superior Insulation and Helps Prevent Condensation.
6. Rugged Welded Tubular Aluminum Roof Framing.
7. Rugged Heavy-Gauge Tubular Aluminum, Fixture Welded to Form the Sidewall Framing.
8. High-Density EPS Insulation Provides Superior Lamination and Bonding Characteristics and Insures Greater Energy Efficiency.
9. Interior Wall Panels Securely Laminated to Sidewall Framing.
10. "Super Slick" Fiberglass Exterior Vacuum-bond Laminated to Sidewall Framing for Lasting Beauty and Durability. (Option)
11. High-Quality Stain-Resistant Carpeting Available in Designer Coordinated Colors.
12. Extra-Thick Padding Under Carpet Provides Extra Comfort and Increases Carpet Durability.
13. Floor Decking Laminated to Steel Floor Structure Assures a Quiet, Long-Lasting Rigid Floor and comes with a 10-Year Warranty.
14. Heavy-Gauge Tubular Steel Floor Framing, Fixture Welded for Extra Strength and Stability.
15. Heavy-gauge Tubular Steel Framed, Fixture Webbed Floor Truss System Provides the Strongest Class C Foundation in the Industry.
16. Seamless Layer of Galvanized Steel Securely Laminated to the Steel Floor Framing.
17. Galvanized Steel Used to Form Each Storage & Holding Compartment.
18. Durable All-Weather Carpeting Completes Each Accessible Storage Compartment, Providing Extra Protection for Luggage and Valuables.
19. Rust-Prohibitive Paint Coating Applied to All Steel Framing Assures Corrosion and Rust Protection.
20. The Industry's Strongest, Most Spacious Exterior Storage Compartments.



PRE-DRILLED
HARDWOOD
CONSTRUCTION



**SOLID
HARDWOOD
CABINETRY**



COMPETITOR'S CABINETRY

Our residential style cabinets are constructed of solid hardwood doors and fronts that are pre-drilled and screwed, then they are stained and top coated with a furniture grade finish that provides long lasting beauty and durability as well as adding strength and quietness to your motorhome.

Other companies use wrapped cabinet fronts prone to peeling, fading, and tearing. The softer composite wood used does not hold screws as well as hardwood resulting in loss of strength and squeaking. Discoloration will degrade the beauty and lower the value of the motorhome.

Added, Value



Dual metal H-Ducted air conditioning system eliminates mildew causing condensation and is wrapped in foil bubble insulation for improved climate control.



Seamless, carpeted, galvanized steel storage compartments safely cradle your valuables. Rust protective paint and foam sealed for extended life and a quiet ride.



Unlike traditional plywood and foam seating Comfort Plus Seating features the strength of steel and the comfort of a sprung dinette cushion.



Driver Convenience PACKAGE

Make driving your BT Cruiser effortless with the addition of the driver convenience package. This option will give even the most timid driver confidence while backing up with reverse obstacle sensing and backup monitor. Keyless entry also included in this package facilitates easy entry and secured exit of your new motor home.



Driver Convenience Package Available on Ford Chassis Only.

Excellent Weathering -

Maintaining the vehicle's quality appearance enhances its resale value.



Tear Resistance - Flexroofs hard abuse resistant finish resists tearing, a condition that can cause leaks and lead to expensive repair.

Low Maintenance - Road grime can easily be removed with normal cleaning maintenance. Rubber chalking due to solar breakdown of the roof surface is eliminated, preserving the original appearance and resale value of the vehicle.

Stain Resistance - Fiberglass Flexroof is designed to resist staining and maintain its quality appearance.

Structural Integrity - Unlike conventional EPDM rubber roof membranes, Flexroof is a structural component of the roof system.

Textured Fiberglass - Helps dissipate heat and prevents tree limbs from tearing or scratching your roof.

Value, Added

G.O.L.D. Program

(Gulf Stream Ownership Lifetime of Dedication)



Gulf Stream is dedicated to our customers and their enjoyment of our products. Our golden promise is to call you within four weeks of the new vehicle purchase date welcoming you to the Gulf Stream family. This call, made by your dedicated customer care person, is to let you know that if you ever need assistance with the operation of components, troubleshooting, or if you ever need to locate an authorized service center, you can rest assured that help is but a phone call away. With the G.O.L.D. Program we'll be there for you for the lifetime of your RV.

Coach-Net®

24 HR. EMERGENCY ROADSIDE ASSISTANCE

- One Year Coach-Net Membership
- Towing and Winching
- Delivery of emergency Fluids
- Flat Tire Change
- Mobile Mechanic
- Jump-Start / Battery Boost
- Lockout

E-Z STORE PRIVACY

NO MORE BUTTONS
NO MORE HASSLE
NO MORE WASTED SPACE

Unique self storing privacy divider featuring quick and simple setup.

**2 YEAR
UNLIMITED MILEAGE
TRANSFERABLE
WARRANTY**
ON STRUCTURAL COMPONENTS*

One year unlimited mileage total use warranty under normal use against defects in material and/or workmanship in construction and original components. *For purposes of this warranty, "Structural components" shall be limited to the structure of the side walls, front and back walls, roof and floor. See the official written Gulf Stream Coach, Inc. Limited Warranty for details.



CONQUEST
MOTORHOMES

Off the map, **on the mark.**



The Conquest Checkpoint is the outward physical symbol of our role as industry leaders. Our exacting standards for creating the best possible RV Customer experience are the direction the rest of the industry seeks.

Beyond the beaten path, to a new destination.

Conquest constantly looks to the future, casting a clear vision of "the next big thing" and making it happen. We don't follow trends; we set them. **Beyond imagination, to reality.**



Conquest Motorhome Division is a member of the Gulf Stream Coach family of products. As a privately owned company with 25 years of RV manufacturing experience, Gulf Stream has set itself apart from the rest of the RV industry by giving the market exactly what it's looking for. We are constantly talking to our customers and dealers, taking their suggestions and implementing them in our products. We also use Lean Manufacturing Techniques, Six-Sigma Quality Control, Creative Standardization and 5 S practices to maximize our production efficiency and eliminate waste. Our efficiency has received accolades from Vincennes University for Total Quality Management. These practices have also gained recognition from the state of Indiana, as we have received the Indiana Governor's Award for Recycling, making us one of the few eco-friendly manufacturing companies in the industry. All these initiatives go back to one goal... To give you the highest value product offerings, quality construction, innovative features, contemporary designs, and unmatched service and on-going support.

The Gulf Streamers RV Club is a valuable benefit to all Gulf Stream owners. Members enjoy staying active and participating in the various rallies and caravans offered throughout the United States and Canada. Go to www.gulfstreamrv.com for more information.



LEARN MORE ABOUT OUR WIDE RANGE OF PRODUCTS AT
WWW.CONQUESTMOTORHOMES.COM

POST OFFICE BOX 1005 • NAPPANEE, IN 46550 • 1-800-289-8787

For more information and available options, contact your local Conquest dealer, www.conquestmotorhomes.com or Gulf Stream Coach, Inc. Gulf Stream Coach, Inc., reserves the right to make changes in prices, colors, materials, components and specifications and to discontinue models at any time without notice or obligation. Gulf Stream Coach, Inc., assumes no responsibility for any error in type or print reproduction of specifications or floorplans in this brochure. Photographs may show equipment or items that are optional and are not included in the purchase price of the coach. Test drive and review a current model at your nearest Conquest dealer. © 2008 Gulf Stream Coach, Inc., Nappanee, Indiana U.S.A.