

Titanium[®]

GLENDALE RV

2005 BUYERS GUIDE



Glendale Recreational Vehicles

BUILDING QUALITY RECREATIONAL VEHICLES SINCE 1950

FIFTH WHEEL SPECIFICATIONS

2005 MODEL YEAR



Model	24E29	26E31DS	28E33	28E33B	28E33SB	28E33TS	29E34	29E34RL	29E34TS	30E35DS	30E35RB	31E36MK	31E36TBR	32E37DS	32E37TS	33E38SD	33E38TS	34E39MPRV	34E39QS	34E39SD	
Sleeps	4	6	6	8	6	6	6	6	6	6	9	6	9	6	6	6	6	6	6	6	6
Overall Length	29'-3"	31'-11"	33'-4"	33'-10"	33'-3"	33'-10"	34'-8"	34'-11"	34'-11"	36'-4"	35'-10"	36'-4"	35'-10"	37'-4"	37'-4"	39'-1"	39'-1"	39'-10"	39'-1"	39'-1"	39'-1"
Overall Exterior Height	12'-5"	12'-6"	12'-7"	12'-4"	12'-7"	12'-6"	12'-8"	12'-8"	12'-8"	12'-8"	12'-8"	12'-8"	12'-8"	12'-8"	12'-8"	12'-8"	12'-8"	12'-8"	12'-8"	12'-8"	12'-8"
Dry Pin Weight (lbs)	1,521	1,709	1,525	1,679	1,424	1,892	1,652	1,727	1,900	1,684	1,657	1,759	1,657	1,757	2,028	1,627	2,000	2,243	2,321	2,084	2,084
Dry Weight (lbs)	6,856	8,392	8,113	7,996	8,362	9,508	8,427	8,545	9,690	8,362	8,708	9,385	8,708	9,624	10,231	10,446	10,436	10,190	11,146	11,575	11,575
G.V.W.R. (lbs)	8,772	10,614	10,436	10,140	10,582	11,971	10,657	10,802	12,226	12,257	10,994	11,817	10,994	12,103	12,831	13,079	13,067	14,244	13,933	14,440	14,440
Main Body Width	8'	8'	8'	8'	8'	8'	8'	8'	8'	8'	8'	8'	8'	8'	8'	8'	8'	8'	8'	8'	8'
Interior Height Measurement (Floor to Ceiling)																					
Max. Living Area Height	100"	100"	100"	100"	100"	100"	100"	100"	100"	100"	100"	100"	100"	100"	100"	100"	100"	100"	100"	100"	100"
Max. Bedroom Height	77"	77"	77"	77"	77"	77"	77"	77"	77"	77"	77"	77"	77"	77"	77"	77"	77"	77"	77"	77"	77"
Pin Box Area Clearance	60"	60"	60"	60"	60"	60"	60"	60"	60"	60"	60"	60"	60"	60"	60"	60"	60"	60"	60"	60"	60"
Page Number	Page 3	Page 4	Page 5	Page 6	Page 7	Page 8	Page 9	Page 10	Page 11	Page 12	Page 21	Page 22	Page 23	Page 24	Page 25	Page 26	Page 27	Page 28	Page 29	Page 30	Page 30

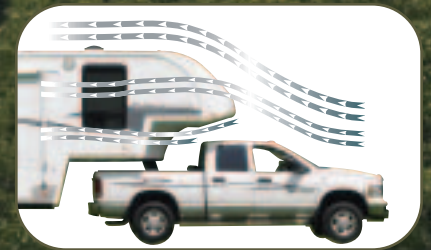
A WORD ABOUT THIS GUIDE

The units described in this guide incorporated components produced by Glendale Recreational Vehicles and related companies and suppliers. During manufacturing, different components than initially scheduled may be used. All illustrations and specifications contained in this book are based on the latest production information available at the time of publication approval. However, because we continually upgrade and improve our product, the right is reserved to make changes at any time, without notice, in colour, materials, equipment, specifications and models. We also reserve the right to add or discontinue models without prior notice. Some equipment shown or described throughout this guide may only be available at extra cost and/or may only be available prior to production. Some options may not be available when your unit is built. Photos and drawings are representative of the products and may differ from actual production models. HOLDING TANK CAPACITIES = U.S. GALLONS.

US PATENT 6,394,533

AERODYNAMIC STREAMLINED EXTERIOR PROFILE

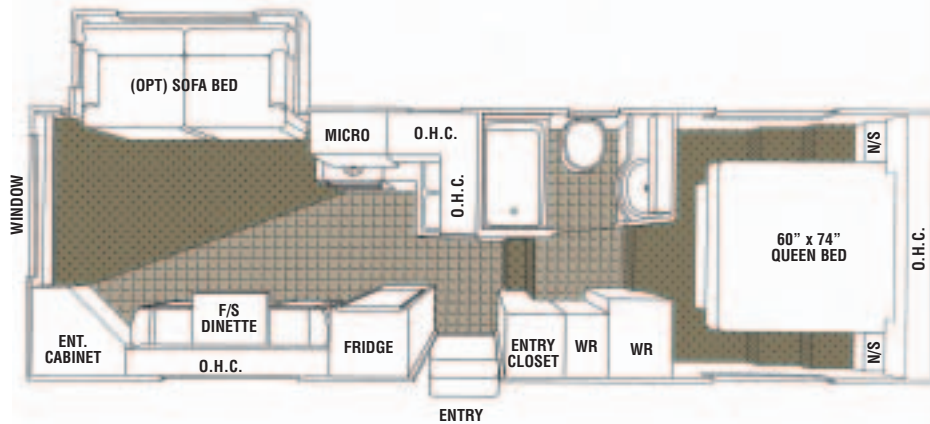
Air flows over the cap and is swept away from the pin box area of the fifth wheel



Key Advantages Over All Traditional Fifth Wheel Designs:

- Significant Fuel Savings for Tow Vehicle
- Reduced Wind Drag
- Exceptional Stability and Road Handling

TRULY THE MOST AERODYNAMIC 5TH WHEEL IN THE WORLD



Titanium®

GLENDALE, KY

24E29

FIFTH WHEEL

2005 MODEL YEAR

OVERALL LENGTH	LENGTH-PIN TO BUMPER	G.V.W.R	DRY PIN WEIGHT	DRY WEIGHT	OVERALL HEIGHT	MAIN BODY WIDTH
29'-3"	24'-1"	8,772 lbs	1,521 lbs	6,856 lbs	12'-5"	96"

CONSTRUCTION

SIDEWALLS: Vacuum bonded ultra smooth Lamilux fiberglass siding. 1-1/2" light weight Aluminum Perimeter sidewall framing, and 1-1/2" rigid foam insulation.

ROOF: Seamless rubber roof membrane is bonded to 3/8" plywood decking. Full 5-1/2" tapered aluminum truss framing. Thick fiberglass batt insulation.

FLOOR: Laminated composite floor structure includes 3" foam insulation panel bonded between plywood panels and perimeter framing. Darco polyethylene moisture barrier between chassis underbelly. Seam guard under vinyl floor coverings.

CHASSIS: 11" combination Z channel/steel tube frame construction, axle shocks at all wheels, Goodyear ST225/75R15 C radial tires, venting wheel rims 12"x2" electric brakes, underslung spare tire and rim, snap release pins on powered front landing gear, power landing gear includes a safety shut off switch, 2 stabilizer jacks, 72 degree adjustable pin box.

SLIDEOUT SPECIFICATIONS: Low maintenance powerful rack and gear 12V direct drive motor system, flush floor design, gear box release lever included for system manual override.

INTERIOR CABINET DOORS: Combination flat and raised panel & cathedral style mirrored Oak cabinet doors. Easy-Glide metal roller system on all drawers.

WINDOWS: Radius corner tinted SAFETY glass.

ENTRANCE DOOR: 30" wide radius corner combination entrance door with screen and deadbolt lock, easy fold-away 24" triple rise entry steps, fold away assist handle on entry door, porch light.

APPLIANCES

REFRIGERATOR: Dometic 8 cubic ft double door, 2 way gas/110v.

RANGE: Wedgewood High Output 21" 3 burner, piezo ignitor.

FURNACE: Atwood 2 stage Excalibur furnace 34,000 BTU ducted in floor heat system.

MICROWAVE OVEN: Dometic 24" 1.3 cubic ft with turntable and built in range hood, light and exhaust fan.

AIR CONDITIONER: Dometic Briskair 13,500 BTU thermal insulated ducted in ceiling cool air system.

ENTERTAINMENT

STEREO: DVD/CD Tuner 5 speaker Surround Sound (Mandatory Super Pack).

BEDROOM STEREO: Stereo 12V CD/Clock Radio with remote. (Mandatory Super Pack)

TV ANTENNA: Winegard RV antenna with booster.

TV HOOKUP: Coax cable hookup in bedroom and living area.

TELEPHONE JACK: Standard equipment.

SATELLITE HOOKUP: Pre-wired for quick dish connection to the RV.

AWNING

A&E 13' AWNING: Pewter/White. Awning features patented rugged steel roller tube and heavy duty torsion spring 8' extension.

PLUMBING & ELECTRICAL

Sealand Traveler Lite foot pedal flush china toilet with hand spray (Mandatory Option), Lyons tub and surround, folding shower door, single lever brushed nickel faucet in kitchen with sprayer, large double brushed nickel sink, brushed nickel single lever tap in bathroom, water heater by pass kit, Water Filtration System.

WATER HEATER: Atwood XT advance water heater system featuring Exothermal Technology 10 Gallon gas/electric (Direct Spark Ignition) that provides the equivalent to 16 gallons of hot water (Mandatory Option).

HOLDING TANKS: Holding tanks are enclosed, insulated and heated. Garden Style non-freeze drain tap on fresh water tank, sewage tank flush system.

HOLDING TANK CAPACITIES:

FRESH: 48 gallon **GREY:** 49 gallon. **SEWAGE:** 49 gallon

ELECTRICAL CONVERTER: Progressive Dynamics 9100 series converter with Charge Wizard.

HOOKUP: 30 AMP

STANDARD FEATURES

Free Standing dinette with (2) chairs, Fiberglass front and back end caps, roof rack and ladder, oak edge counter tops, daveno, exterior rinse shower, venetian blinds, 2 x 30 lb propane bottles with auto change over regulator, systems monitor panel, color coordinated ABS lower sidewall skirting, huge under bed storage cavity, 60"x74" queen bed, smoke detector, decorative clock over entry way, decorative corner blocks on the interior slideout, 400W Inverter.

OPTIONAL EQUIPMENT

Twin beds, sofa bed, straight dinette chairs, folding dinette chairs, straight table w/2 chairs, day/night shades, thermopane windows, storm windows, aluminum rims, exterior security lights, blanket box sofa table, extended pin box assembly, skylight in bathroom, 27" Stereo TV, 1,000W Inverter/Converter.

OPTIONAL

FEATURE PACKAGE UPGRADES

INTERIOR PACKAGE: Fluorescent ceiling lights, day/night shades, Oak flooring.

COMFORT PACKAGE: 15,000 BTU air conditioner upgrade, Fantastic powered roof vent in bedroom, central vacuum.

MANDATORY SUPER PACK

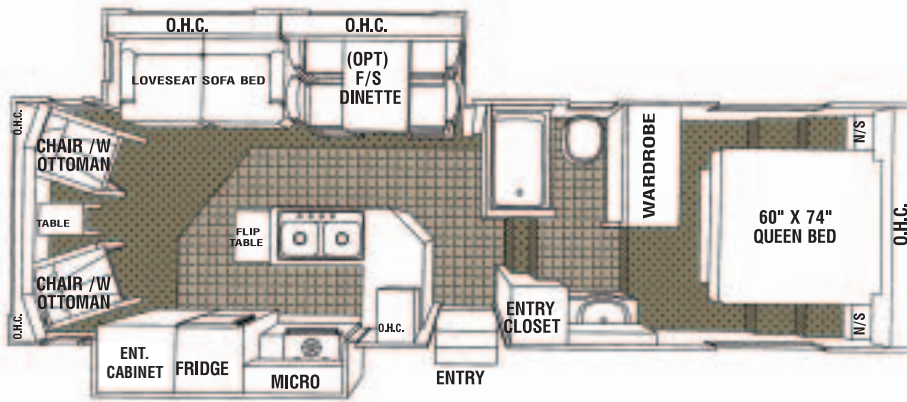
FEATURE UPGRADES

Never Lube Axles, Bedroom 12V CD/Clock Radio with remote, DVD/CD 5 Speaker Surround Sound, Bi-Fold Burner Cover, Solar Panel Trickle Charger on Air Conditioner, Down Draft Cool Air Diverter, Brushed Nickel Single Lever Kitchen Tap Set, Exterior Quick Connect for BBQ, New Exterior Graphics Package, Mirrored Doors in Bedroom, Cathedral Mirrored OHC's in Living area, Attic Vents, Baseboard and Oak ceiling Molding, OHC in Bedroom, Stainless Steel Look Microwave, Bullet Style Lighting included on OHC's in bedroom, Dinette Slideout area. (where slideouts include OHC's).

OPTIONAL SCREENED REAR DECK PATIO
PATENT PENDING



PATIO FURNITURE NOT INCLUDED



Titanium®

GLENDALE, AZ

26E31DS

FIFTH WHEEL

2005 MODEL YEAR

OVERALL LENGTH	LENGTH-PIN TO BUMPER	G.V.W.R	DRY PIN WEIGHT	DRY WEIGHT	OVERALL HEIGHT	MAIN BODY WIDTH
31'-11"	26'-9"	10,614 lbs	1,709 lbs	8,392 lbs	12'-6"	96"

CONSTRUCTION

SIDEWALLS: Vacuum bonded ultra smooth Lamilux fiberglass siding, 1-1/2" light weight Aluminum Perimeter sidewall framing, and 1 1/2" rigid foam insulation.

ROOF: Seamless rubber roof membrane is bonded to 3/8" plywood decking. Full 5-1/2" tapered aluminum truss framing. Thick fiberglass batt insulation. Cathedral ceilings in the bedroom.

FLOOR: Laminated composite floor structure includes 3" foam insulation panel bonded between plywood panels and perimeter framing. Darco polyethylene moisture barrier between chassis underbelly. Seam guard under vinyl floor coverings.

CHASSIS: 11" combination Z channel/steel tube frame construction, axle shocks at all wheels, Goodyear ST235/80R16 "D" radial tires, venting wheel rims 12"x2" electric brakes, underslung spare tire and rim, snap release pins on powered front landing gear, powered front landing gear includes a safety shut off switch for your added protection, 2 stabilizer jacks, 72 degree adjustable pin box.

SLIDEOUT SPECIFICATIONS: Low maintenance powerful rack and gear 12V direct drive motor system, flush floor design, gear box release lever included for system manual override.

INTERIOR CABINET DOORS: Combination of Raised panel & Mirrored cathedral style Oak cabinet doors. Easy-Glide metal roller system on all drawers.

WINDOWS: Radius corner tinted SAFETY glass.

ENTRANCE DOOR: 30" wide radius corner combination entrance door with screen and deadbolt lock, easy fold-away 24" triple rise entry steps, fold away assist handle on entry door, porch light.

APPLIANCES

REFRIGERATOR: Dometic 8 cubic ft double door, 2 way gas/110v.

RANGE: Wedgewood High Output 21" 3 burner, piezo ignitor.

FURNACE: Atwood 2 stage Excalibur furnace 34,000 BTU ducted in floor heat system.

MICROWAVE OVEN: Dometic 24" 1.3 cubic ft with turntable and built in range hood, light and exhaust fan.

AIR CONDITIONER: Dometic Briskair 13,500 BTU thermal insulated ducted in ceiling cool air system.

ENTERTAINMENT

STEREO: DVD/CD Tuner 5 speaker Surround Sound (Mandatory Super Pack)

BEDROOM STEREO: Stereo 12V CD/Clock Radio with remote. (Mandatory Super Pack)

TV ANTENNA: Winegard RV antenna with booster.

TV HOOKUP: Coax cable hookup in bedroom and living area.

TELEPHONE JACK: Standard equipment.

SATELLITE HOOKUP: Pre-wired for quick dish connection to the RV.

AWNING

A&E 18' AWNING: Pewter/White. Awning features patented rugged steel roller tube and heavy duty torsion spring 8' extension.

PLUMBING & ELECTRICAL

Sealand Traveler Lite foot pedal flush china toilet with hand spray (Mandatory Option), Lyons tub with surround, folding shower door, double brushed nickel sink in kitchen with single lever faucet and hand sprayer, brushed nickel single lever tap in bathroom, water heater by pass kit, Water Filtration System.

WATER HEATER: Atwood XT advance water heater system featuring Exothermal Technology 10 Gallon gas/electric (Direct Spark Ignition) that provides the equivalent to 16 gallons of hot water (Mandatory Option).

HOLDING TANKS: Holding tanks are enclosed, insulated and heated. Garden Style non-freeze drain tap on fresh water tank, sewage tank flush system.

HOLDING TANK CAPACITIES:

FRESH: 48 gallon. **GREY:** 49 gallon. **SEWAGE:** 49 gallon.

ELECTRICAL CONVERTER: Progressive Dynamics 9100 series converter with Charge Wizard.

HOOKUP: 30 AMP.

STANDARD FEATURES

Fiberglass front and back end caps, roof rack and ladder, oak edge counter tops, exterior rinse shower, venetian blinds, 2 x 30 lb propane bottles with auto change over regulator, systems monitor panel, color coordinated ABS lower sidewall skirting, smoke detector, decorative wall clock, huge under bed storage cavity, 60"x 74" queen bed, 2 chairs with ottomans, decorative corner blocks on the interior slideouts, 400W Inverter.

OPTIONAL EQUIPMENT

Twin beds, free standing Oak dinette with storage in place of booth style dinette, day/night shades, Loveseat (Mandatory Option), thermopane windows, storm windows, aluminum rims, exterior security lights, dual front landing gear (Mandatory Option), porcelain toilet (Mandatory Option), electric fireplace, skylight above shower with inner dome, 27" Stereo TV, rear patio deck, 1,000W Inverter/Converter.

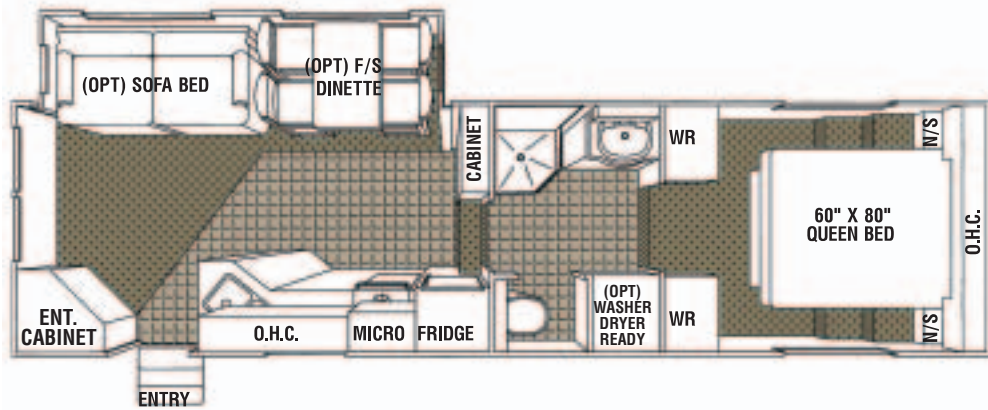
OPTIONAL FEATURE PACKAGE UPGRADES

INTERIOR PACKAGE: Fluorescent ceiling lights, day/night shades, Oak flooring.

COMFORT PACKAGE: 15,000 BTU air conditioner upgrade, Fantastic powered roof vent in bedroom, central vacuum, paddle fan

MANDATORY SUPER PACK FEATURE UPGRADES

Never Lube Axles, Bedroom 12V CD/Clock Radio with remote, DVD/CD 5 Speaker Surround Sound, Bi-Fold Burner Cover, Solar Panel Trickle Charger on Air Conditioner, Down Draft Cool Air Diverter, Brushed Nickel Single Lever Kitchen Tap Set, Exterior Quick Connect for BBQ, New Exterior Graphics Package, Mirrored Doors in Bedroom, Cathedral Mirrored OHC's in Living area, Attic Vents, Baseboard and Oak ceiling Molding, OHC in Bedroom, Stainless Steel Look Microwave, Bullet Style Lighting included on Rear OHC's in living area and, bedroom, Sofa Slideout area. (where slideouts include OHC's)



Titanium[®]

GLENDALE, I.V.

28E33

FIFTH WHEEL

2005 MODEL YEAR

OVERALL LENGTH	LENGTH-PIN TO BUMPER	G.V.W.R	DRY PIN WEIGHT	DRY WEIGHT	OVERALL HEIGHT	MAIN BODY WIDTH
33'-4"	28'-2"	10,436 lbs	1,525 lbs	8,113 lbs	12'-7"	96"

CONSTRUCTION

SIDEWALLS: Vacuum bonded ultra smooth Lamilux fiberglass siding, 1-1/2" light weight Aluminum Perimeter sidewall framing, and 1 1/2" rigid foam insulation.

ROOF: Seamless rubber roof membrane is bonded to 3/8" plywood decking. Full 5-1/2" tapered aluminum truss framing. Thick fiberglass batt insulation. Cathedral ceilings in the bedroom.

FLOOR: Laminated composite floor structure includes 3" foam insulation panel bonded between plywood panels and perimeter framing. Darco polyethylene moisture barrier between chassis underbelly. Seam guard under vinyl floor coverings.

CHASSIS: 11" combination Z channel/steel tube frame construction, axle shocks at all wheels, Goodyear ST235/80R16 "D" radial tires, venting wheel rims 12"x2" electric brakes, underslung spare tire and rim, snap release pins on powered front landing gear, powered front landing gear includes a safety shut off switch for your added protection, 2 stabilizer jacks, 72 degree adjustable pin box.

SLIDEOUT SPECIFICATIONS: Low maintenance powerful rack and gear 12V direct drive motor system, flush floor design, gear box release lever included for system manual override.

INTERIOR CABINET DOORS: Combination of raised panel & cathedral style mirrored Oak cabinet doors. Easy-Glide metal roller system on all drawers.

WINDOWS: Radius corner tinted SAFETY glass.

ENTRANCE DOOR: 30" wide radius corner combination entrance door with screen and deadbolt lock, easy fold-away 24" triple rise entry steps, fold away assist handle on entry door, porch light.

APPLIANCES

REFRIGERATOR: Dometic 8 cubic ft double door, 2 way gas/110v.

RANGE: Wedgewood High Output 21" 3 burner, piezo ignitor.

FURNACE: Atwood 2 stage Excalibur furnace 34,000 BTU ducted in floor heat system.

MICROWAVE OVEN: Dometic 24" 1.3 cubic ft with turntable and built in range hood, light and exhaust fan.

AIR CONDITIONER: Dometic Briskair 13,500 BTU thermal insulated ducted in ceiling cool air system.

ENTERTAINMENT

STEREO: DVD/CD/Tuner 5 speaker Surround Sound (Mandatory Super Pack)

BEDROOM STEREO: Stereo 12V CD/Clock Radio with remote. (Mandatory Super Pack)

TV ANTENNA: Winegard RV antenna with booster.

TV HOOKUP: Coax cable hookup in bedroom and living area.

TELEPHONE JACK: Standard equipment.

SATELLITE HOOKUP: Pre-wired for quick dish connection to the RV.

AWNING

A&E 19' AWNING: Pewter/White. Awning features patented rugged steel roller tube and heavy duty torsion spring. 8' extension.

PLUMBING & ELECTRICAL

Sealand Traveler Lite foot pedal flush china toilet with hand spray (Mandatory Option), Lyons corner shower and surround, single lever Brushed Nickel faucet in kitchen with sprayer, large double brushed nickel sinks, and sink cover, Euro bath vanity with brushed nickel single lever tap, water heater by pass kit, Water Filtration System.

WATER HEATER: Atwood XT advance water heater system featuring Exothermal Technology 10 Gallon gas/electric (Direct Spark Ignition) that provides the equivalent to 16 gallons of hot water (Mandatory Option).

HOLDING TANKS: Holding tanks are enclosed, insulated and heated. Garden Style non-freeze drain tap on fresh water tank, sewage tank flush system.

HOLDING TANK CAPACITIES:

FRESH: 48 gallon. **GREY:** 49 gallon. **SEWAGE:** 49 gallon.

ELECTRICAL CONVERTER: Progressive Dynamics 9100 series converter with Charge Wizard.

HOOKUP: 30 AMP.

STANDARD FEATURES

Fiberglass front and back end caps, roof rack and ladder, oak edge counter tops, Daveno, exterior rinse shower, venetian blinds, 2 x 30 lb propane bottles with auto change over regulator, systems monitor panel, color coordinated ABS lower sidewall skirting, smoke detector, huge under bed storage cavity, 60"x80" queen bed, French doors in bedroom, decorative corner blocks on the interior slideout, 400W Inverter.

OPTIONAL EQUIPMENT

Twin beds, Sofa bed, free standing Oak dinette with storage in place of booth style dinette, day/night shades, thermopane windows, storm windows, aluminum rims, exterior security lights, dual front landing gear (Mandatory Option), porcelain toilet (Mandatory Option), electric fireplace, washer dryer ready, generator ready connection, skylight above shower with inner dome, blanket box style sofa table, 27" Stereo TV, 1,000W Inverter/Converter.

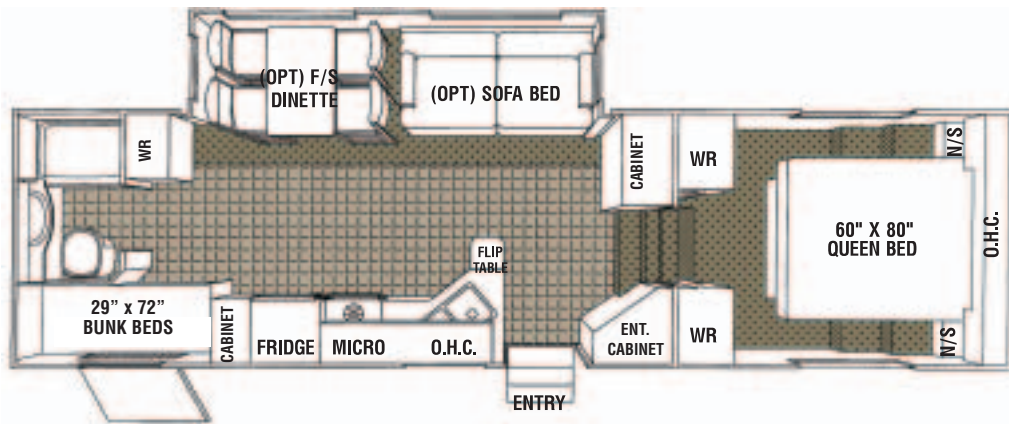
OPTIONAL FEATURE PACKAGE UPGRADES

INTERIOR PACKAGE: Fluorescent ceiling lights, day/night shades, Oak area flooring.

COMFORT PACKAGE: 15,000 BTU air conditioner upgrade, Fantastic powered roof vent in bedroom, central vacuum, paddle fan

MANDATORY SUPER PACK FEATURE UPGRADES

Never Lube Axles, Bedroom 12V CD/Clock Radio with remote, DVD/Tuner 5 Speaker Surround Sound, Bi-Fold Burner Cover, Solar Panel Trickle Charger on Air Conditioner, Down Draft Cool Air Diverter, Brushed Nickel Single Lever Kitchen Tap Set, Exterior Quick Connect for BBQ, New Exterior Graphics Package, Mirrored Doors in Bedroom, Cathedral Mirrored OHC's in Living area, Attic Vents, Baseboard and Oak ceiling Molding, OHC in Bedroom, Stainless Steel Look Microwave, Bullet Style Lighting included on OHC's in Dinette/ Sofa Slideout area (where slideouts include OHC's).



Titanium[®]

GLENDALE RV

28E33B

FIFTH WHEEL

2005 MODEL YEAR

OVERALL LENGTH	LENGTH-PIN TO BUMPER	G.V.W.R	DRY PIN WEIGHT	DRY WEIGHT	OVERALL HEIGHT	MAIN BODY WIDTH
33'-10"	28'-8"	10,140 lbs	1,679 lbs	7,996 lbs	12'-4"	96"

CONSTRUCTION

SIDEWALLS: Vacuum bonded ultra smooth Lamilux fiberglass siding, 1-1/2" rigid foam insulation.

ROOF: Seamless rubber roof membrane is bonded to 3/8" plywood decking. Full 5-1/2" tapered aluminum truss framing. Thick fiberglass batt insulation. Cathedral ceilings in the bedroom.

FLOOR: Laminated composite floor structure includes 3" foam insulation panel bonded between plywood panels and perimeter framing. Darco polyethylene moisture barrier between chassis underbelly. Seam guard under vinyl floor coverings.

CHASSIS: 11" combination Z channel/steel tube frame construction, Goodyear ST225/75R15 D radial tires, venting wheel rims 12"x2" electric brakes, underslung spare tire and rim, snap release pins on powered front landing gear, power front landing gear includes a safety shut off switch for your added protection, 2 stabilizer jacks, 72 degree adjustable pin box.

SLIDEOUT SPECIFICATIONS: Low maintenance powerful rack and gear 12V direct drive motor system, flush floor design, gear box release lever included for system manual override.

INTERIOR CABINET DOORS: Combination of raised panel & cathedral style mirrored Oak cabinet doors. Easy-Glide metal roller system on all drawers.

WINDOWS: Radius corner tinted SAFETY glass.

ENTRANCE DOOR: 30" wide radius corner combination entrance door with screen and deadbolt lock, easy fold-away 24" triple rise entry steps, fold away assist handle on entry door, porch light.

APPLIANCES

REFRIGERATOR: Dometic 8 cubic ft double door, 2 way gas/110v.

RANGE: Wedgewood High Output 21" 3 burner, piezo ignitor.

FURNACE: Atwood 2 stage Excalibur furnace 34,000 BTU ducted in floor heat system.

MICROWAVE OVEN: Dometic 24" 1.3 cubic ft with turntable and built in range hood, light and exhaust fan.

ENTERTAINMENT

STEREO: DVD/CD/Tuner 5 speaker Surround Sound. (Mandatory Super Pack)

BEDROOM STEREO: Stereo 12V CD/Clock Radio with remote. (Mandatory Super Pack)

TV ANTENNA: Winegard RV antenna with booster.

TV HOOKUP: Coax cable hookup in bedroom and living area.

AWNING

A&E 20' AWNING: Pewter/White. Awning features patented rugged steel roller tube and heavy duty torsion spring 8' extension.

PLUMBING & ELECTRICAL

Sealand Traveler Lite foot pedal flush china toilet with hand spray (Mandatory Option), ABS tub and surround, folding shower door, single lever brushed nickel faucet in kitchen with sprayer, double brushed nickel sinks with cover included, brushed nickel single lever tap in bathroom, water heater by pass kit, Water Filtration System.

WATER HEATER: Atwood XT advance water heater system featuring Exothermal Technology 10 Gallon gas/electric (Direct Spark Ignition) that provides the equivalent to 16 gallons of hot water (Mandatory Option).

HOLDING TANKS: Garden style non-freeze drain tap on fresh water tank.

HOLDING TANK CAPACITIES:

FRESH: 48 gallon. **GREY:** 49 gallon. **SEWAGE:** 49 gallon.

ELECTRICAL CONVERTER: Progressive Dynamics 9100 series converter with Charge Wizard.

HOOKUP: 30 AMP.

STANDARD FEATURES

Fiberglass front and back end caps, roof rack and ladder, oak edge counter tops, Daveno, exterior rinse shower, 2 x 30 lb propane bottles with auto change over regulator, venetian blinds, systems monitor panel, color coordinated ABS lower sidewall skirting, huge under bed storage cavity, 60"x80" queen bed, French doors in bedroom, decorative corner blocks on the interior slideout, 400W Inverter.

OPTIONAL EQUIPMENT

Twin beds, Sofa Bed, Free Standing dinette in place of booth style dinette, day/night shades, thermopane windows, storm windows, aluminum rims, exterior security lights, axle shock kit, dual powered front landing gear (Mandatory Option), satellite dish hook-up, porcelain toilet (Mandatory Option). Enclosed Insulated holding tanks, skylight bathroom, 27" Stereo TV, 1,000W Inverter/Converter.

MANDATORY SUPER PACK FEATURE UPGRADES

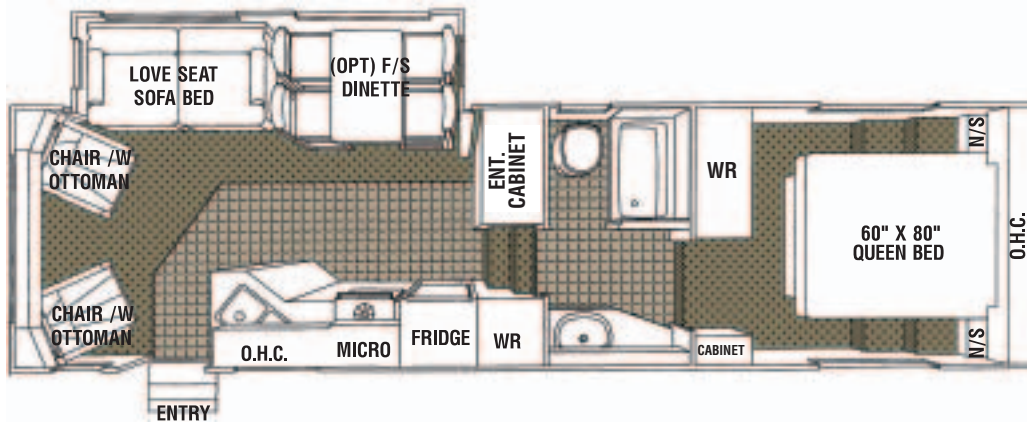
Never Lube Axles, Bedroom 12V CD/Clock Radio with remote, DVD/CD 5 Speaker Surround Sound, Bi-Fold Burner Cover, Solar Panel Trickle Charger on Air Conditioner, Down Draft Cool Air Diverter, Brushed Nickel Single Lever Kitchen Tap Set, Exterior Quick Connect for BBQ, New Exterior Graphics Package, Mirrored Doors in Bedroom, Cathedral Mirrored OHC's in Living area, Attic Vents, Baseboard and Oak ceiling Molding, OHC in Bedroom, Stainless Steel Look Microwave, (where slideouts include OHC's).



Day Time:
Travel storage convenience



Night Time:
Converts to stackable bunks for added sleeping requirements



Titanium®

GLENDALE, I.V.

28E33SB

FIFTH WHEEL

2005 MODEL YEAR

OVERALL LENGTH	LENGTH-PIN TO BUMPER	G.V.W.R	DRY PIN WEIGHT	DRY WEIGHT	OVERALL HEIGHT	MAIN BODY WIDTH
33'-3"	28'-1"	10,582 lbs	1,424 lbs	8,362 lbs	12'-7"	96"

CONSTRUCTION

SIDEWALLS: Vacuum bonded ultra smooth **Lamilux** fiberglass siding. 1-1/2" light weight Aluminum Perimeter sidewall framing, and 1-1/2" rigid foam insulation.

ROOF: Seamless rubber roof membrane is bonded to 3/8" plywood decking. Full 5-1/2" tapered aluminum truss framing. Thick fiberglass batt insulation. Cathedral ceilings in the bedroom.

FLOOR: Laminated composite floor structure includes 3" foam insulation panel bonded between plywood panels and perimeter framing. **Darco** polyethylene moisture barrier between chassis underbelly. Seam guard under vinyl floor coverings.

CHASSIS: 11" combination Z channel/steel tube frame construction, axle shocks at all wheels, **Goodyear** ST235/80R16 "D" radial tires, venting wheel rims 12"x2" electric brakes, underslung spare tire and rim, snap release pins on powered front landing gear, power front landing gear includes a safety shut off switch, 2 stabilizer jacks, 72 degree adjustable pin box.

SLIDEOUT SPECIFICATIONS: Low maintenance powerful rack and gear 12V direct drive motor system, flush floor design, gear box release lever included for system manual override.

INTERIOR CABINET DOORS: Combination of Raised panel & cathedral style mirrored Oak cabinet doors. Easy-Glide metal roller system on all drawers.

WINDOWS: Radius corner tinted SAFETY glass.

ENTRANCE DOOR: 30" wide radius corner combination entrance door with screen and deadbolt lock, easy fold-away 24" triple rise entry steps, fold away assist handle on entry door, porch light.

APPLIANCES

REFRIGERATOR: **Dometic** 8 cubic ft double door, 2 way gas/110v.

RANGE: **Wedgewood** High Output 21" 3 burner, piezo ignitor.

FURNACE: **Atwood** 2 stage Excalibur furnace 34,000 BTU ducted in floor heat system.

MICROWAVE OVEN: **Dometic** 24" 1.3 cubic ft with turntable and built in range hood, light and exhaust fan.

AIR CONDITIONER: **Dometic** Briskair 13,500 BTU thermal insulated ducted in ceiling cool air system.

ENTERTAINMENT

STEREO: DVD/CD Tuner 5 speaker Surround Sound. (Mandatory Super Pack)

BEDROOM STEREO: Stereo 12V CD/Clock Radio with remote. (Mandatory Super Pack)

TV ANTENNA: **Winegard** RV antenna with booster.

TV HOOKUP: Coax cable hookup in bedroom and living area.

TELEPHONE JACK: Standard equipment.

SATELLITE HOOKUP: Pre-wired for quick dish connection to the RV.

AWNING

A&E 19' AWNING: Pewter/White. Awning features patented rugged steel roller tube and heavy duty torsion spring 8' extension.

PLUMBING & ELECTRICAL

Sealand Traveler Lite foot pedal flush china toilet with hand spray (Mandatory Option), Lyons tub and surround, single lever Brushed Nickel faucet in kitchen with sprayer, large double brushed nickel sinks, and sink cover included, brushed nickel single lever tap in bathroom, water heater by pass kit, Water Filtration System.

WATER HEATER: **Atwood XT** advance water heater system featuring Exothermal Technology 10 Gallon gas/electric (Direct Spark Ignition) that provides the equivalent to 16 gallons of hot water (Mandatory Option).

HOLDING TANKS: Holding tanks are enclosed, insulated and heated. Garden Style non-freeze drain tap on fresh water tank, sewage tank flush system.

HOLDING TANK CAPACITIES:

FRESH: 48 gallon. **GREY:** 49 gallon. **SEWAGE:** 49 gallon.

ELECTRICAL CONVERTER: **Progressive Dynamics** 9100 series converter with Charge Wizard.

HOOKUP: 30 AMP.

STANDARD FEATURES

Fiberglass front and back end caps, roof rack and ladder, oak edge counter tops, exterior rinse shower, venetian blinds, 2 x 30 lb propane bottles with auto change over regulator, systems monitor panel, color coordinated ABS lower sidewall skirting, smoke detector, huge under bed storage cavity, 60"x80" queen bed, French doors in bedroom, decorative corner blocks on the interior slideout, 400W Inverter.

OPTIONAL EQUIPMENT

Twin beds, free standing Oak dinette with storage in place of booth style dinette, day/night shades, thermopane windows, storm windows, aluminum rims, exterior security lights, dual front landing gear (Mandatory Option), porcelain toilet (Mandatory Option), Loveseat, (Mandatory Option), electric fireplace, generator ready connection, skylight above shower with inner dome, blanket box style sofa table, 27" Stereo TV, rear patio deck, 1,000W Inverter/Converter.

OPTIONAL FEATURE PACKAGE UPGRADES

INTERIOR PACKAGE: Fluorescent ceiling lights, day/night shades, Oak area flooring.

COMFORT PACKAGE: 15,000 BTU air conditioner upgrade, Fantastic powered roof vent in bedroom, central vacuum, paddle fan.

MANDATORY SUPER PACK FEATURE UPGRADES

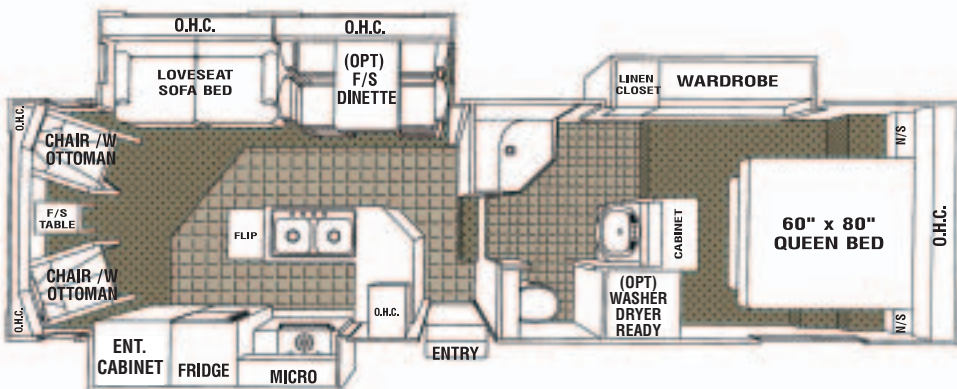
Never Lube Axles, Bedroom 12V CD/Clock Radio with remote, DVD/CD 5 Speaker Surround Sound, Bi-Fold Burner Cover, Solar Panel Trickle Charger on Air Conditioner, Down Draft Cool Air Diverter, Brushed Nickel Single Lever Kitchen Tap Set, Exterior Quick Connect for BBQ, New Exterior Graphics Package, Mirrored Doors in Bedroom, Cathedral Mirrored OHC's in Living area, Attic Vents, Baseboard and Oak ceiling Molding, OHC in Bedroom, Stainless Steel Look Microwave, Bullet Style Lighting included on Rear OHC's in living area, bedroom, and Sofa Slideout area. (where slideouts include OHC's).

NEW

OPTIONAL SCREENED REAR DECK PATIO
PATENT PENDING



PATIO FURNITURE NOT INCLUDED



Titanium[®]
GLENDALE, AZ

28E33TS
FIFTH WHEEL
2005 MODEL YEAR

OVERALL LENGTH	LENGTH-PIN TO BUMPER	G.V.W.R	DRY PIN WEIGHT	DRY WEIGHT	OVERALL HEIGHT	MAIN BODY WIDTH
33'-10"	28'-8"	11,971 lbs	1,892 lbs	9,508 lbs	12'-6"	96"

CONSTRUCTION

SIDEWALLS: Vacuum bonded ultra smooth **Lamilux** fiberglass siding. 1-1/2" light weight Aluminum Perimeter sidewall framing, and 1-1/2" rigid foam insulation.

ROOF: Seamless rubber roof membrane is bonded to 3/8" plywood decking. Full 5-1/2" tapered aluminum truss framing. Thick fiberglass batt insulation. Cathedral ceilings in the bedroom.

FLOOR: Laminated composite floor structure includes 3" foam insulation panel bonded between plywood panels and perimeter framing. **Darco** polyethylene moisture barrier between chassis underbelly. Seam guard under vinyl floor coverings.

CHASSIS: 11" combination Z channel/steel tube frame construction, axle shocks at all wheels, **Goodyear** ST235/80R16 "D" radial tires, venting wheel rims 12"x2" electric brakes, underslung spare tire and rim, snap release pins on powered front landing gear, powered front landing gear includes a safety shut off switch for your added protection, 2 stabilizer jacks, 72 degree adjustable pin box.

SLIDEOUT SPECIFICATIONS: Low maintenance powerful rack and gear 12V direct drive motor system, flush floor design, gear box release lever included for system manual override.

INTERIOR CABINET DOORS: Combination of Raised panel & Mirrored cathedral style Oak cabinet doors. Easy-Glide metal roller system on all drawers.

WINDOWS: Radius corner tinted SAFETY glass.

ENTRANCE DOOR: 30" wide radius corner combination entrance door with screen and deadbolt lock, easy fold-away 24" triple rise entry steps, fold away assist handle on entry door, porch light.

APPLIANCES

REFRIGERATOR: **Dometic** 8 cubic ft double door, 2 way gas/110v.

RANGE: **Wedgewood** High Output 21" 3 burner, piezo ignitor.

FURNACE: **Atwood** 2 stage Excalibur furnace 34,000 BTU ducted in floor heat system.

MICROWAVE OVEN: **Dometic** 24" 1.3 cubic ft with turntable and built in range hood, light and exhaust fan.

AIR CONDITIONER: **Dometic** Briskair 13,500 BTU thermal insulated ducted in ceiling cool air system.

ENTERTAINMENT

STEREO: DVD/CD Tuner 5 speaker Surround Sound. (Mandatory Super Pack)

BEDROOM STEREO: Stereo 12V CD/Clock Radio with remote. (Mandatory Super Pack)

TV ANTENNA: **Winegard** RV antenna with booster.

TV HOOKUP: Coax cable hookup in bedroom and living area.

TELEPHONE JACK: Standard equipment.

SATELLITE HOOKUP: Pre-wired for quick dish connection to the RV.

AWNING

A&E 19' AWNING: Pewter/White. Awning features patented rugged steel roller tube and heavy duty torsion spring 8' extension.

PLUMBING & ELECTRICAL

Sealand Traveler Lite foot pedal flush china toilet with hand spray (Mandatory Option), corner shower with surround, glass shower door, double brushed nickel sink in kitchen with single lever faucet and hand sprayer, brushed nickel single lever tap in bathroom, water heater by pass kit, Water Filtration System.

WATER HEATER: **Atwood XT** advance water heater system featuring Exothermal Technology 10 Gallon gas/electric (Direct Spark Ignition) that provides the equivalent to 16 gallons of hot water (Mandatory Option).

HOLDING TANKS: Holding tanks are enclosed, insulated and heated. Garden Style non-freeze drain tap on fresh water tank, sewage tank flush system.

HOLDING TANK CAPACITIES:

FRESH: 48 gallon. **GREY:** 49 gallon. **SEWAGE:** 49 gallon.

ELECTRICAL CONVERTER: **Progressive Dynamics** 9100 series converter with Charge Wizard.

HOOKUP: 30 AMP.

STANDARD FEATURES

Fiberglass front and back end caps, roof rack and ladder, oak edge counter tops, exterior rinse shower, venetian blinds, 2 x 30 lb propane bottles with auto change over regulator, systems monitor panel, color coordinated ABS lower sidewall skirting, smoke detector, decorative wall clock, huge under bed storage cavity, 60"x 80" queen bed, 2 chairs with ottomans, decorative corner blocks on the interior slideouts, 400W Inverter.

OPTIONAL EQUIPMENT

Free standing Oak dinette with storage in place of booth style dinette, day/night shades, Loveseat (Mandatory Option), thermopane windows, storm windows, aluminum rims, exterior security lights, dual front landing gear (Mandatory Option), porcelain toilet (Mandatory Option), electric fireplace, skylight above shower with inner dome, 27" Stereo TV, rear patio deck, 1,000W Inverter/Converter, Washer Dryer Ready.

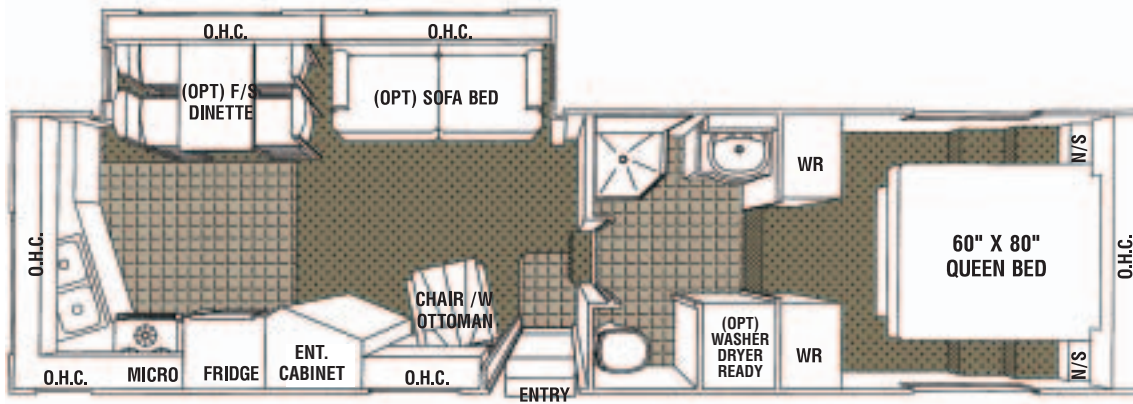
OPTIONAL FEATURE PACKAGE UPGRADES

INTERIOR PACKAGE: Fluorescent ceiling lights, day/night shades, Oak galley area flooring.

COMFORT PACKAGE: 15,000 BTU air conditioner upgrade, Fantastic powered roof vent in bedroom, central vacuum, paddle fan.

MANDATORY SUPER PACK FEATURE UPGRADES

Never Lube Axles, Bedroom 12V CD/Clock Radio with remote, DVD/CD 5 Speaker Surround Sound, Bi-Fold Burner Cover, Solar Panel Trickle Charger on Air Conditioner, Down Draft Cool Air Diverter, Brushed Nickel Single Lever Kitchen Tap Set, Exterior Quick Connect for BBQ, New Exterior Graphics Package, Mirrored Doors in Bedroom, Cathedral Mirrored OHC's in Living area, Attic Vents, Baseboard and Oak ceiling Molding, OHC in Bedroom, Stainless Steel Look Microwave, Bullet Style Lighting included on Rear OHC's in living area, bedroom, Sofa Slideout area.



Titanium®

GLENDALE RV

29E34

FIFTH WHEEL

2005 MODEL YEAR

OVERALL LENGTH	LENGTH-PIN TO BUMPER	G.V.W.R	DRY PIN WEIGHT	DRY WEIGHT	OVERALL HEIGHT	MAIN BODY WIDTH
34'-8"	29'-6"	10,657 lbs	1,652 lbs	8,427 lbs	12'-8"	96"

CONSTRUCTION

SIDEWALLS: Vacuum bonded ultra smooth Lamilux fiberglass siding, 1-1/2" light weight Aluminum Perimeter sidewall framing, and 1-1/2" rigid foam insulation.

ROOF: Seamless rubber roof membrane is bonded to 3/8" plywood decking. Full 5-1/2" tapered aluminum truss framing. Thick fiberglass batt insulation. Cathedral ceilings in the bedroom.

FLOOR: Laminated composite floor structure includes 3" foam insulation panel bonded between plywood panels and perimeter framing. Darco polyethylene moisture barrier between chassis underbelly. Seam guard under vinyl floor coverings.

CHASSIS: 1" combination Z channel/steel tube frame construction, axle shocks at all wheels, Goodyear ST235/80R16 "D" radial tires, venting wheel rims 12"x2" electric brakes, under slung spare tire and rim, snap release pins on powered front landing gear, power front landing gear includes a safety shut off switch, 2 stabilizer jacks, 72 degree adjustable pin box.

SLIDEOUT SPECIFICATIONS: Low maintenance powerful rack and gear 12V direct drive motor system, flush floor design, gearbox release lever included for system manual override.

INTERIOR CABINET DOORS: Combination of Raised panel & cathedral style mirrored Oak cabinet doors. Easy-Glide metal roller system on all drawers.

WINDOWS: Radius corner tinted SAFETY glass.

ENTRANCE DOOR: 30" wide radius corner combination entrance door with screen and deadbolt lock, easy fold-away 24" triple rise entry steps, fold away assist handle on entry door, porch light.

APPLIANCES

REFRIGERATOR: Dometic 8 cubic ft double door, 2 way gas/110v.

RANGE: Wedgewood High Output 21" 3 burner, piezo ignitor, includes a bi-fold burner cover.

FURNACE: Atwood 2 stage Excalibur furnace 34,000 BTU ducted in floor heat system.

MICROWAVE OVEN: Dometic 24" 1.3 cubic ft with turntable and built in range hood, light and exhaust fan.

AIR CONDITIONER: Dometic Briskair 13,500 BTU thermal insulated ducted in ceiling cool air system.

ENTERTAINMENT

STEREO: DVD/CD Tuner 5 speaker Surround Sound. (Mandatory Super Pack)

BEDROOM STEREO: Stereo 12V CD/Clock Radio with remote. (Mandatory Super Pack)

TV ANTENNA: Winegard RV antenna with booster.

TV HOOKUP: Coax cable hookup in bedroom and living area.

TELEPHONE JACK: Standard equipment.

SATELLITE HOOKUP: Pre-wired for quick dish connection to the RV.

AWNING

A&E 19' AWNING: Pewter/White. Awning features patented rugged steel roller tube and heavy duty torsion spring 8' extension.

PLUMBING & ELECTRICAL

Sealand Traveler Lite foot pedal flush china toilet with hand spray (Mandatory Option), Lyons corner shower and surround, single lever Brushed Nickel faucet in kitchen with sprayer, large double brushed nickel sinks, and sink cover included. Euro bath vanity with brushed nickel single lever tap, water heater by pass kit, Water Filtration System.

WATER HEATER: Atwood XT advance water heater system featuring Exothermal Technology 10 Gallon gas/electric (Direct Spark Ignition) that provides the equivalent to 16 gallons of hot water (Mandatory Option).

HOLDING TANKS: Holding tanks are enclosed, insulated and heated. Garden Style non-freeze drain tap on fresh water tank, sewage tank flush system.

HOLDING TANKS: Holding tanks are enclosed, insulated and heated. Garden Style non-freeze drain tap on fresh water tank, sewage tank flush system.

HOLDING TANK CAPACITIES:

FRESH: 48 gallon. **GREY:** 49 gallon. **SEWAGE:** 49 gallon.

ELECTRICAL CONVERTER: Progressive Dynamics 9100 series converter with Charge Wizard.

HOOKUP: 30 AMP.

STANDARD FEATURES

Fiberglass front and back end caps, roof rack and ladder, oak edge counter tops, Daveno, exterior rinse shower, venetian blinds, 2 x 30 lb propane bottles with auto change over regulator, systems monitor panel, color coordinated ABS lower sidewall skirting, smoke detector, huge under bed storage cavity, 60"x80" queen bed, French doors in bedroom, decorative corner blocks on the interior slideout, 400W Inverter.

OPTIONAL EQUIPMENT

Twin beds, free standing Oak dinette with storage in place of booth style dinette, Wall-A-way recliner, Sofa Bed, day/night shades, thermopane windows, storm windows, aluminum rims, exterior security lights, dual front landing gear (Mandatory Option), porcelain toilet (Mandatory Option), electric fireplace, washer dryer ready, generator ready connection, skylight in bathroom, 27" Stereo TV, 1,000W Inverter/Converter.

OPTIONAL FEATURE PACKAGE UPGRADES

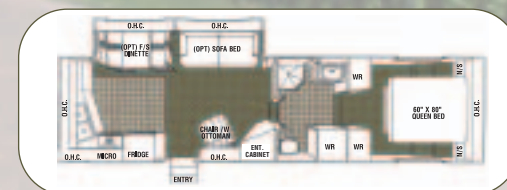
INTERIOR PACKAGE: Fluorescent ceiling lights, day/night shades, Oak area flooring.

COMFORT PACKAGE: 15,000 BTU air conditioner upgrade, Fantastic powered roof vent in bedroom, central vacuum, paddle fan.

MANDATORY SUPER PACK FEATURE UPGRADES

Never Lube Axles, Bedroom 12V CD/Clock Radio with remote, DVD/Tuner 5 Speaker Surround Sound, Bi-Fold Burner Cover, Solar Panel Trickle Charger on Air Conditioner, Down Draft Cool Air Diverter, Brushed Nickel Single Lever Kitchen Tap Set, Exterior Quick Connect for BBQ, New Exterior Graphics Package, Mirrored Doors in Bedroom, Cathedral Mirrored OHC's in Living area, Attic Vents, Baseboard and Oak ceiling Molding, OHC in Bedroom, Stainless Steel Look Microwave, Bullet Style Lighting included on OHC's in, bedroom, Sofa/Dinette Slideout areas.

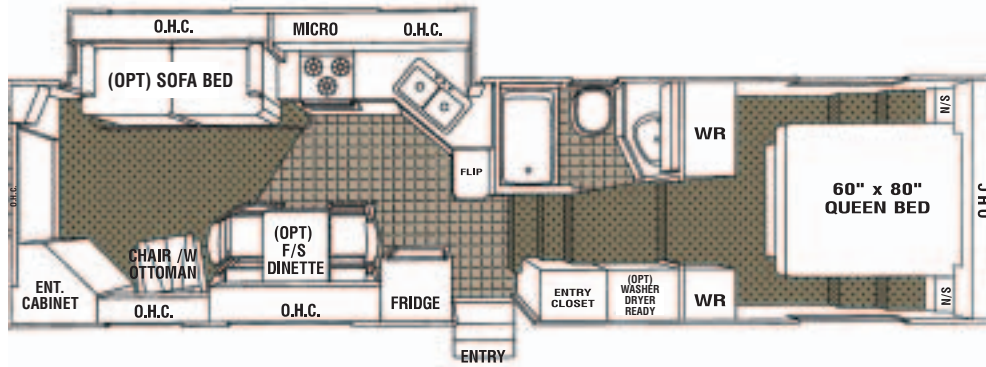
OPTIONAL FLOORPLAN



OPTIONAL SCREENED REAR DECK PATIO
PATENT PENDING



PATIO FURNITURE NOT INCLUDED



Titanium®

GLENDALE, VA

29E34RL

FIFTH WHEEL 2005 MODEL YEAR

OVERALL LENGTH	LENGTH-PIN TO BUMPER	G.V.W.R	DRY PIN WEIGHT	DRY WEIGHT	OVERALL HEIGHT	MAIN BODY WIDTH
34'-11"	29'-9"	10,802 lbs	1,727 lbs	8,545 lbs	12'-8"	96"

CONSTRUCTION

SIDEWALLS: Vacuum bonded ultra smooth Lamilux fiberglass siding. 1-1/2" light weight Aluminum Perimeter sidewall framing, and 1-1/2" rigid foam insulation.

ROOF: Seamless rubber roof membrane is bonded to 3/8" plywood decking. Full 5-1/2" tapered aluminum truss framing. Thick fiberglass batt insulation. Cathedral ceilings in the bedroom.

FLOOR: Laminated composite floor structure includes 3" foam insulation panel bonded between plywood panels and perimeter framing. Darco polyethylene moisture barrier between chassis underbelly. Seam guard under vinyl floor coverings.

CHASSIS: 11" combination Z channel/steel tube frame construction, axle shocks at all wheels, Goodyear ST235/80R16 "D" radial tires, venting wheel rims 12"x2" electric brakes, under slung spare tire and rim, snap release pins on powered front landing gear, power front landing gear includes a safety shut off switch, 2 stabilizer jacks, 72 degree adjustable pin box.

SLIDEOUT SPECIFICATIONS: Low maintenance powerful rack and gear 12V direct drive motor system, flush floor design, gearbox release lever included for system manual override.

INTERIOR CABINET DOORS: Combination of Raised panel & cathedral style mirrored Oak cabinet doors. Easy-Glide metal roller system on all drawers.

WINDOWS: Radius corner, tinted SAFETY glass.

ENTRANCE DOOR: 30" wide radius corner combination entrance door with screen and deadbolt lock, easy fold-away 24" triple rise entry steps, fold away assist handle on entry door, porch light.

APPLIANCES

REFRIGERATOR: Dometic 8 cubic ft double door, 2 way gas/110v.

RANGE: Wedgewood High Output 21" 3 burner, piezo ignitor, includes a bi-fold burner cover.

FURNACE: Atwood 2 stage Excalibur furnace 34,000 BTU ducted in floor heat system.

MICROWAVE OVEN: Dometic 24" 1.3 cubic ft with turntable and

built in range hood, light and exhaust fan.

AIR CONDITIONER: Dometic Briskair 13,500 BTU thermal insulated ducted in ceiling cool air system.

ENTERTAINMENT

STEREO: DVD/CD Tuner 5 speaker Surround Sound. (Mandatory Super Pack)

BEDROOM STEREO: Stereo 12V CD/Clock Radio with remote. (Mandatory Super Pack)

TV ANTENNA: Winegard RV antenna with booster.

TV HOOKUP: Coax cable hookup in bedroom and living area.

TELEPHONE JACK: Standard equipment.

SATELLITE HOOKUP: Pre-wired for quick dish connection to the RV.

AWNING

A&E 19' AWNING: Pewter/White. Awning features patented rugged steel roller tube and heavy duty torsion spring 8' extension.

PLUMBING & ELECTRICAL

Sealand Traveler Lite foot pedal flush china toilet with hand spray (Mandatory Option), Lyons tub and surround, single lever Brushed Nickel faucet in kitchen with sprayer, large double brushed nickel sinks, and sink cover included, brushed nickel single lever tap in bathroom, water heater by pass kit. Water Filtration System.

WATER HEATER: Atwood XT advance water heater system featuring Exothermal Technology 10 Gallon gas/electric (Direct Spark Ignition) that provides the equivalent to 16 gallons of hot water (Mandatory Option).

HOLDING TANKS: Holding tanks are enclosed, insulated and heated. Garden Style non-freeze drain tap on fresh water tank, sewage tank flush system.

HOLDING TANK CAPACITIES:

FRESH: 48 gallon. **GREY:** 49 gallon. **SEWAGE:** 49 gallon.

ELECTRICAL CONVERTER: Progressive Dynamics 9100 series converter with Charge Wizard.

HOOKUP: 30 AMP.

STANDARD FEATURES

Fiberglass front and back end caps, roof rack and ladder, oak edge counter tops, Daveno, exterior rinse shower, venetian blinds, 2 x 30 lb propane bottles with auto change over regulator, systems monitor panel, color coordinated ABS lower sidewall skirting, smoke detector, huge under bed storage cavity, 60"x80" queen bed, French doors in bedroom, Chair w/Ottoman, decorative corner blocks on the interior slideout, 400W Inverter.

OPTIONAL EQUIPMENT

Twin beds, free standing Oak dinette with storage in place of booth style dinette, Wall-A-way recliner, Sofa Bed, day/night shades, thermopane windows, storm windows, aluminum rims, exterior security lights, dual front landing gear (Mandatory Option), porcelain toilet (Mandatory Option), electric fireplace, washer dryer ready, generator ready connection, skylight in bathroom, 27" Stereo TV, rear deck patio, 1,000W Inverter/Converter, Washer Dryer Ready.

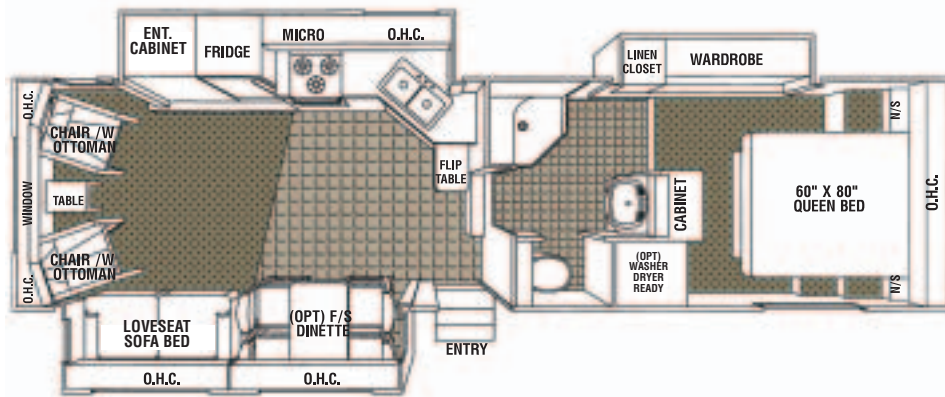
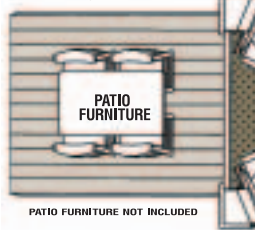
OPTIONAL FEATURE PACKAGE UPGRADES

INTERIOR PACKAGE: Fluorescent ceiling lights, day/night shades, Oak galley area flooring.

COMFORT PACKAGE: 15,000 BTU air conditioner upgrade, Fantastic powered roof vent in bedroom, central vacuum, paddle fan

MANDATORY SUPER PACK FEATURE UPGRADES

Never Lube Axles, Bedroom 12V CD/Clock Radio with remote, DVD/Tuner 5 Speaker Surround Sound, Bi-Fold Burner Cover, Solar Panel Trickle Charger on Air Conditioner, Down Draft Cool Air Diverter, Brushed Nickel Single Lever Kitchen Tap Set, Exterior Quick Connect for BBQ, New Exterior Graphics Package, Mirrored Doors in Bedroom, Cathedral Mirrored OHC's in Living area, Attic Vents, Baseboard and Oak ceiling Molding, OHC in Bedroom, Stainless Steel Look Microwave, Bullet Style Lighting included on Rear OHC's in living area, bedroom, and Sofa Slideout area. (Note: Equipped with booth dinette on this model results in limited space and Sofa bed will not fold out.)

NEWOPTIONAL SCREENED REAR DECK PATIO
PATENT PENDING**Titanium**[®]
GLENDALE, ILL.**29E34TS****FIFTH WHEEL
2005 MODEL YEAR**

OVERALL LENGTH	LENGTH-PIN TO BUMPER	G.V.W.R	DRY PIN WEIGHT	DRY WEIGHT	OVERALL HEIGHT	MAIN BODY WIDTH
34'-11"	29'-9"	12,226 lbs	1,900 lbs	9,690 lbs	12'-8"	96"

CONSTRUCTION

SIDEWALLS: Vacuum bonded ultra smooth **Lamilux** fiberglass siding. 1-1/2" light weight Aluminum Perimeter sidewall framing, and 1-1/2" rigid foam insulation.

ROOF: Seamless rubber roof membrane is bonded to 3/8" plywood decking. Full 5-1/2" tapered aluminum truss framing. Thick fiberglass batt insulation. Cathedral ceilings in the bedroom.

FLOOR: Laminated composite floor structure includes 3" foam insulation panel bonded between plywood panels and perimeter framing. **Darco** polyethylene moisture barrier between chassis underbelly. Seam guard under vinyl floor coverings.

CHASSIS: 11" combination Z channel/steel tube frame construction, axle shocks at all wheels, **Goodyear** ST235/80R16 "D" radial tires, venting wheel rims 12"x2" electric brakes, under slung spare tire and rim, snap release pins on powered front landing gear, power front landing gear includes a safety shut off switch, 2 stabilizer jacks, 72 degree adjustable pin box.

SLIDEOUT SPECIFICATIONS: Low maintenance powerful rack and gear 12V direct drive motor system, flush floor design, gearbox release lever included for system manual override.

INTERIOR CABINET DOORS: Combination of Raised panel & cathedral style mirrored Oak cabinet doors. Easy-Glide metal roller system on all drawers.

WINDOWS: Radius corner, tinted SAFETY glass.

ENTRANCE DOOR: 30" wide radius corner combination entrance door with screen and deadbolt lock, easy fold-away 24" triple rise entry steps, fold away assist handle on entry door, porch light.

APPLIANCES

REFRIGERATOR: **Dometic** 8 cubic ft double door, 2 way gas/110v.

RANGE: **Wedgewood** High Output 21" 3 burner, piezo ignitor, includes a bi-fold burner cover.

FURNACE: **Atwood** 2 stage Excalibur furnace 34,000 BTU ducted in floor heat system.

MICROWAVE OVEN: **Dometic** 24" 1.3 cubic ft with turntable and

built in range hood, light and exhaust fan.

AIR CONDITIONER: **Dometic** Briskair 13,500 BTU thermal insulated ducted in ceiling cool air system.

ENTERTAINMENT

STEREO: DVD/CD tuner 5 speaker Surround Sound. (Mandatory Super Pack)

BEDROOM STEREO: Stereo 12V CD/Clock Radio with remote. (Mandatory Super Pack)

TV ANTENNA: Winegard RV antenna with booster.

TV HOOKUP: Coax cable hookup in bedroom and living area.

TELEPHONE JACK: Standard equipment.

SATELLITE HOOKUP: Pre-wired for quick dish connection to the RV.

AWNING

A&E 13' AWNING: Pewter/White. Awning features patented rugged steel roller tube and heavy duty torsion spring 8' extension.

PLUMBING & ELECTRICAL

Sealand Traveler Lite foot pedal flush china toilet with hand spray (Mandatory Option), corner shower and surround, single lever Brushed Nickel faucet in kitchen with sprayer, large double brushed nickel sinks, and sink cover included, brushed nickel single lever tap in bathroom, water heater by pass kit, Water Filtration System.

WATER HEATER: **Atwood XT** advance water heater system featuring Exothermal Technology 10 Gallon gas/electric (Direct Spark Ignition) that provides the equivalent to 16 gallons of hot water (Mandatory Option).

HOLDING TANKS: Holding tanks are enclosed, insulated and heated. Garden Style non-freeze drain tap on fresh water tank, sewage tank flush system.

HOLDING TANK CAPACITIES:

FRESH: 48 gallon. **GREY:** 49 gallon. **SEWAGE:** 49 gallon.

ELECTRICAL CONVERTER: **Progressive Dynamics** 9100 series converter with Charge Wizard.

HOOKUP: 30 AMP.

STANDARD FEATURES

Fiberglass front and back end caps, roof rack and ladder, oak edge counter tops, exterior rinse shower, venetian blinds, 2 x 30 lb propane bottles with auto change over regulator, systems monitor panel, color coordinated ABS lower sidewall skirting, smoke detector, huge under bed storage cavity, 60"x80" queen bed, 2 Chairs w/Ottoman, decorative corner blocks on the interior slideouts, 400W Inverter.

OPTIONAL EQUIPMENT

Free standing Oak dinette with storage in place of booth style dinette, Wall-A-way recliner, Loveseat Sofa Bed (Mandatory Option), day/night shades, thermopane windows, storm windows, aluminum rims, exterior security lights, dual front landing gear (Mandatory Option), porcelain toilet (Mandatory Option), electric fireplace, washer dryer ready, generator ready connection, skylight in bathroom, 27" Stereo TV, rear deck patio, 1,000W Inverter/Converter.

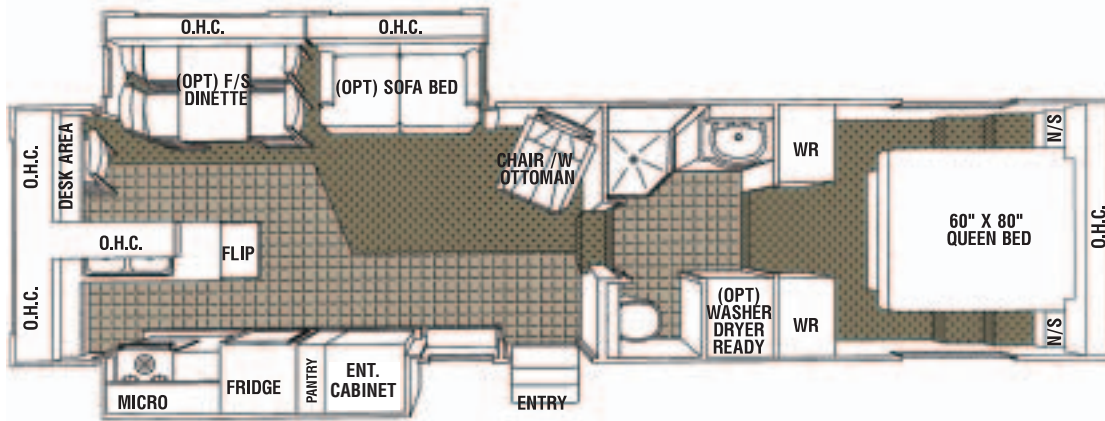
OPTIONAL FEATURE PACKAGE UPGRADES

INTERIOR PACKAGE: Fluorescent ceiling lights, day/night shades, Oak galley area flooring.

COMFORT PACKAGE: 15,000 BTU air conditioner upgrade, Fantastic powered roof vent in bedroom, central vacuum, paddle fan.

MANDATORY SUPER PACK FEATURE UPGRADES

Never Lube Axles, Bedroom 12V CD/Clock Radio with remote, DVD/Tuner 5 Speaker Surround Sound, Bi-Fold Burner Cover, Solar Panel Trickle Charger on Air Conditioner, Down Draft Cool Air Diverter, Brushed Nickel Single Lever Kitchen Tap Set, Exterior Quick Connect for BBQ, New Exterior Graphics Package, Mirrored Doors in Bedroom, Cathedral Mirrored OHC's in Living area, Attic Vents, Baseboard and Oak ceiling Molding, OHC in Bedroom, Stainless Steel Look Microwave, Bullet Style Lighting included on Rear OHC's in living area, bedroom, and Sofa Slideout area.



Titanium®

GLENDALE RV

30E35DS

FIFTH WHEEL

2005 MODEL YEAR

OVERALL LENGTH	LENGTH-PIN TO BUMPER	G.V.W.R	DRY PIN WEIGHT	DRY WEIGHT	OVERALL HEIGHT	MAIN BODY WIDTH
36'-4"	31'-2"	12,257 lbs	1,684 lbs	9,751 lbs	12'-8"	96"

CONSTRUCTION

SIDEWALLS: Vacuum bonded ultra smooth **Lamilux** fiberglass siding. 1-1/2" light weight Aluminum Perimeter sidewall framing, and 1-1/2" rigid foam insulation.

ROOF: Seamless rubber roof membrane is bonded to 3/8" plywood decking. Full 5-1/2" tapered aluminum truss framing. Thick fiberglass batt insulation. Cathedral ceilings in the bedroom.

FLOOR: Laminated composite floor structure includes 3" foam insulation panel bonded between plywood panels and perimeter framing. **Darco** polyethylene moisture barrier between chassis underbelly. Seam guard under vinyl floor coverings.

CHASSIS: 11" combination Z channel/steel tube frame construction, axle shocks at all wheels, **Goodyear** ST235/80R16 "D" radial tires, venting wheel rims 12"x2" electric brakes, underslung spare tire and rim, snap release pins on powered front landing gear, power front landing gear includes a safety shut off switch, 2 stabilizer jacks, 72 degree adjustable pin box.

SLIDEOUT SPECIFICATIONS: Low maintenance powerful rack and gear 12V direct drive motor system, flush floor design, gearbox release lever included for system manual override.

INTERIOR CABINET DOORS: Combination of Raised panel & cathedral style mirrored Oak cabinet doors. Easy-Glide metal roller system on all drawers.

WINDOWS: Radius corner tinted SAFETY glass.

ENTRANCE DOOR: 30" wide radius corner combination entrance door with screen and deadbolt lock, easy fold-away 24" triple rise entry steps, fold away assist handle on entry door, porch light.

APPLIANCES

REFRIGERATOR: **Dometic** 8 cubic ft double door, 2 way gas/110v.

RANGE: **Wedgewood** High Output 21" 3 burner, piezo ignitor, includes a bi-fold burner cover.

FURNACE: **Atwood** 2 stage Excalibur furnace 40,000 BTU ducted in floor heat system.

MICROWAVE OVEN: **Dometic** 24" 1.3 cubic ft with turntable and

built in range hood, light and exhaust fan.

AIR CONDITIONER: **Dometic** Briskair 13,500 BTU thermal insulated ducted in ceiling cool air system.

ENTERTAINMENT

STEREO: DVD/CD Tuner 5 speaker Surround Sound. (Mandatory Super Pack)

BEDROOM STEREO: Stereo 12V CD/Clock Radio with remote. (Mandatory Super Pack)

TV ANTENNA: **Winegard** RV antenna with booster.

TV HOOKUP: Coax cable hookup in bedroom and living area.

TELEPHONE JACK: Standard equipment.

SATELLITE HOOKUP: Pre-wired for quick dish connection to the RV.

AWNING

A&E 22' AWNING: Pewter/White. Awning features patented rugged steel roller tube and heavy duty torsion spring 8' extension.

PLUMBING & ELECTRICAL

Sealand Traveler Lite foot pedal flush china toilet with hand spray, Lyons corner shower and surround, single lever Brushed Nickel faucet in kitchen with sprayer, large double brushed nickel sinks, and sink cover included, Euro bath vanity with brushed nickel single lever tap, water heater by pass kit, Water Filtration System.

WATER HEATER: **Atwood XT** advance water heater system featuring Exothermal Technology 10 Gallon gas/electric (Direct Spark Ignition) that provides the equivalent to 16 gallons of hot water (Mandatory Option).

HOLDING TANKS: Holding tanks are enclosed, insulated and heated. Garden Style non-freeze drain tap on fresh water tank, sewage tank flush system.

HOLDING TANK CAPACITIES:

FRESH: 48 gallon. **GREY:** 49 gallon. **SEWAGE:** 49 gallon.

ELECTRICAL CONVERTER: **Progressive Dynamics** 9100 series converter with Charge Wizard.

HOOKUP: 50 AMP (Detachable Power Cord)

STANDARD FEATURES

Fiberglass front and back end caps, roof rack and ladder, oak edge counter tops, exterior rinse shower, venetian blinds, 2 x 30 lb propane bottles with auto change over regulator, systems monitor panel, color coordinated ABS lower sidewall skirting, under bed storage compartment, 60"x80" queen bed, chair with ottoman, smoke detector, French doors into bedroom, decorative corner blocks on the interior slideouts, 400W Inverter.

OPTIONAL EQUIPMENT

Twin beds, Sofa Bed, free standing Oak dinette with storage in place of booth style dinette, day/night shades, thermopane windows, storm windows, aluminum rims, dual exterior security lights, electric fireplace, Wall-A-way recliner, washer dryer ready, skylight in bathroom, Porcelain toilet (Mandatory Option), Dual Front Power Jacks (Mandatory Option), Generator ready connection, 27" Stereo TV, 1,000W Inverter/Converter.

OPTIONAL FEATURE PACKAGE UPGRADES

INTERIOR PACKAGE: Fluorescent ceiling lights, day/night shades, Oak galley area flooring.

COMFORT PACKAGE: 15,000 BTU air conditioner upgrade, Fantastic powered roof vent in bedroom, central vacuum, paddle fan.

MANDATORY SUPER PACK FEATURE UPGRADES

Never Lube Axles, Bedroom 12V CD/Clock Radio with remote, DVD/CD 5 Speaker Surround Sound, Bi-Fold Burner Cover, Solar Panel Trickle Charger on Air Conditioner, Down Draft Cool Air Diverter, Brushed Nickel Single Lever Kitchen Tap Set, Exterior Quick Connect for BBQ, New Exterior Graphics Package, Mirrored Doors in Bedroom, Cathedral Mirrored OHC's in Living area, Attic Vents, Baseboard and Oak ceiling Molding, OHC in Bedroom, Stainless Steel Look Microwave, Bullet Style Lighting included on OHC's in bedroom, Sofa/Dinette Slideout area.

Titanium[®]

GLENDALE RV



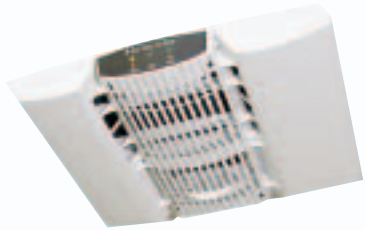
OUR 29E34TS SHOWN HERE IN BLUE DECOR

Titanium®

GLENDALE RV

Titanium offers many great exclusive features that include the most distinctive exterior design in the market today. We invite you to take a closer look at the most popular fifth wheel in **"LUXURY LIVING"**.

15,000 BTU Quick Cool air conditioner which includes the Solar Panel Trickle Charger that will assist in maintaining battery charge and conditioning during non RV use.



The down draft cool air diverter is a key feature that allows up to 80% of the air conditioner's output to be channeled directly into the living area and provide a fast cool down comfort.



The free standing Oak dinette not only offers exceptional styling but added convenience with a unique storage system located under the chair seat and table top. Also included a pullout extension for added table space, and a unique flip up lock mechanism which secures the chair in place while travelling.



Unique auto ignition 2 stage furnace. Choose the desired temperature and let the furnace continually monitor your comfort level. Automatically operating on high BTU, high fan for quick, quiet warm up, the furnace will automatically switch to low BTU, low fan to maintain the desired temperature.

- **Cost efficient fuel savings**
- **Reduced noise**
- **2-stage system**
- **Digitally controlled**

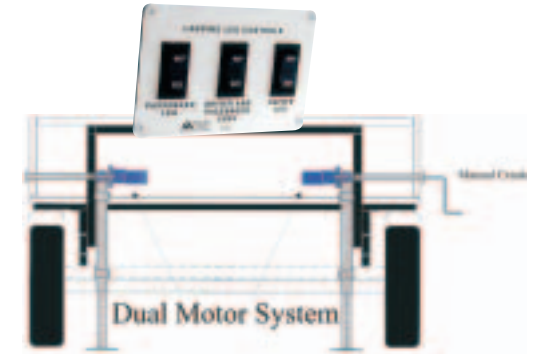
*Standard equipment on ALL Titanium models



Atwood's New XT Advanced gives **16 gallon performance with 10 gallon gas/electric water heater** system that delivers 50% more hot water with its New Exothermal Technology.



Flowmatic Water Filtration System standard equipment on all Titanium models.



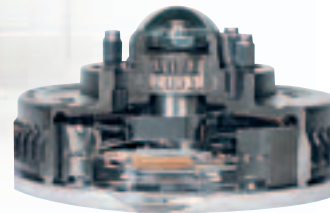
DUAL MOTOR POWERED LANDING GEAR.

The dual motor system allows for independent front jack leveling, and with our 3 switch operation features a center switch to allow synchronized leveling of both passenger side and drive side jack legs. Also included is a safety shut off switch for the landing gear located in the trunk area. This feature disengages the dual power motors to prevent tampering.



Now standard on 2005 models the intelligent charging system that provides a faster battery recharge for dry campers.

The power converter and microprocessor controlled Charge Wizard constantly monitors the battery voltage then automatically selects the proper operating mode and recharge voltage.



Never-lube axles, sealed for life maintenance free reliability.

Some equipment shown or described in this guide may only be available at an extra cost and may only be available prior to production.

The MPRV allows more flexibility than a traditional toy hauler in the market today. This unique cargo space can meet whatever your needs may be. Antique collector hunting for furniture, dog kennel for dog shows, or storing your motorcycle without the hassle of a bike trailer. IT'S TRULY AN MPRV!



This NEW design also offers Glendale's popular optional deck patio design with a side pullout screened room to enjoy a dry, bug free environment, while enjoying the outdoors. This MULTI PURPOSE RECREATIONAL VEHICLE design is the most unique and innovative RV on the market today.



Titanium[®]

M P R V
Multi Purpose Recreational Vehicle



Glendale continues to expand its current Titanium lineup for 2005 with the introduction of the 34E39MPRV. The NEW Titanium MPRV is the only RV that offers LUXURY LIVING with the space that can accommodate your storage and lifestyle requirements.

Titanium[®]

GLENDALERV



OUR 28E33TS SHOWN HERE IN SAGE DECOR

Titanium[®]

GLENDALE RV



OUR 32E37TS SHOWN HERE IN TAUPE DECOR

Titanium®

GLENDALE RV

Titanium's NEW bedroom wardrobe slideout gives an immediate sense of warmth and comfort. This design allows all the conveniences of home, such as an oversized linen closet, added privacy between the bedroom and the bathroom and large sit down style shower. Spacious walk around bedroom access, even when the slideout is closed. All the added storage you could possibly want in an RV. Also add our optional fireplace right in your bedroom for those cool evenings.



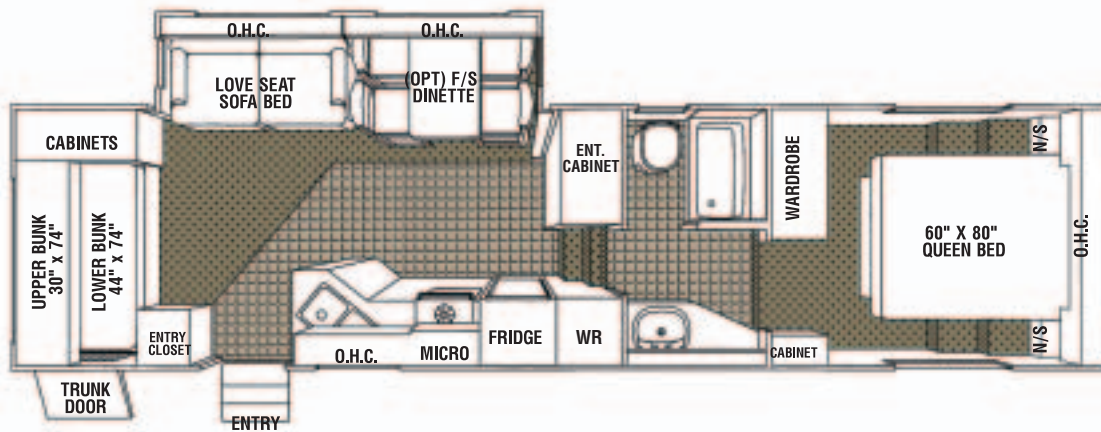
Titanium®

GLENDALE, ILL.

30E35RB

FIFTH WHEEL

2005 MODEL YEAR



OVERALL LENGTH	LENGTH-PIN TO BUMPER	G.V.W.R	DRY PIN WEIGHT	DRY WEIGHT	OVERALL HEIGHT	MAIN BODY WIDTH
35'-10"	30'-8"	10,994 lbs	1,657 lbs	8,708 lbs	12'-8"	96"

CONSTRUCTION

SIDEWALLS: Vacuum bonded ultra smooth Lamilux fiberglass siding, 1-1/2" light weight Aluminum Perimeter sidewall framing, and 1-1/2" rigid foam insulation.

ROOF: Seamless rubber roof membrane is bonded to 3/8" plywood decking. Full 5-1/2" tapered aluminum truss framing. Thick fiberglass batt insulation. Cathedral ceilings in the bedroom.

FLOOR: Laminated composite floor structure includes 3" foam insulation panel bonded between plywood panels and perimeter framing. Darco polyethylene moisture barrier between chassis underbelly. Seam guard under vinyl floor coverings.

CHASSIS: 11" combination Z channel/steel tube frame construction, axle shocks at all wheels, Goodyear ST235/80R16 "D" radial tires, venting wheel rims 12"x2" electric brakes, under slung spare tire and rim, snap release pins on powered front landing gear, power front landing gear includes a safety shut off switch, 2 stabilizer jacks, 72 degree adjustable pin box.

SLIDEOUT SPECIFICATIONS: Low maintenance powerful rack and gear 12V direct drive motor system, flush floor design, gearbox release lever included for system manual override.

INTERIOR CABINET DOORS: Combination of Raised panel & cathedral style mirrored Oak cabinet doors. Easy-Glide metal roller system on all drawers.

WINDOWS: Radius corner tinted SAFETY glass.

ENTRANCE DOOR: 30" wide radius corner combination entrance door with screen and deadbolt lock, easy fold-away 24" triple rise entry steps, fold away assist handle on entry door, porch light.

APPLIANCES

REFRIGERATOR: Dometic 8 cubic ft double door, 2 way gas/110v.

RANGE: Wedgewood High Output 21" 3 burner, piezo ignitor, includes a bi-fold burner cover.

FURNACE: Atwood 2 stage Excalibur furnace 40,000 BTU ducted in floor heat system.

MICROWAVE OVEN: Dometic 24" 1.3 cubic ft with turntable and

built in range hood, light and exhaust fan.

AIR CONDITIONER: Dometic Briskair 13,500 BTU thermal insulated ducted in ceiling cool air system.

ENTERTAINMENT

STEREO: DVD/CD Tuner 5 speaker Surround Sound. (Mandatory Super Pack)

BEDROOM STEREO: Stereo 12V CD/Clock Radio with remote. (Mandatory Super Pack)

TV ANTENNA: Winegard RV antenna with booster.

TV HOOKUP: Coax cable hookup in bedroom and living area.

TELEPHONE JACK: Standard equipment.

SATELLITE HOOKUP: Pre-wired for quick dish connection to the RV.

AWNING

A&E 19' AWNING: Pewter/White. Awning features patented rugged steel roller tube and heavy duty torsion spring 8' extension.

PLUMBING & ELECTRICAL

Sealand Traveler Lite foot pedal flush china toilet with hand spray (Mandatory Option), Lyons tub and surround, single lever Brushed Nickel faucet in kitchen with sprayer, large double brushed nickel sinks, and sink cover included, brushed nickel single lever tap in bathroom, water heater by pass kit, Water Filtration System.

WATER HEATER: Atwood XT advance water heater system featuring Exothermal Technology 10 Gallon gas/electric (Direct Spark Ignition) that provides the equivalent to 16 gallons of hot water (Mandatory Option).

HOLDING TANKS: Holding tanks are enclosed, insulated and heated. Garden Style non-freeze drain tap on fresh water tank, sewage tank flush system.

HOLDING TANK CAPACITIES:

FRESH: 48 gallon. **GREY:** 49 gallon. **SEWAGE:** 49 gallon.

ELECTRICAL CONVERTER: Progressive Dynamics 9100 series converter with Charge Wizard.

HOOKUP: 30 AMP.

STANDARD FEATURES

Fiberglass front and back end caps, roof rack and ladder, oak edge counter tops, exterior rinse shower, venetian blinds, 2 x 30 lb propane bottles with auto change over regulator, systems monitor panel, axle shocks kit, color coordinated ABS lower sidewall skirting, smoke detector, under bed storage compartment, 60"x80" queen bed, decorative corner blocks on the interior slideouts, 400W Inverter.

OPTIONAL EQUIPMENT

Twin beds, free standing Oak dinette with storage in place of booth style dinette, day/night shades, thermopane windows, storm windows, polished aluminum rims, exterior security lights, dual front landing gear (Mandatory Option), porcelain toilet (Mandatory Option), Loveseat (Mandatory Option), electric fireplace, generator ready connection, skylight in bathroom, 27" Stereo TV, 1,000W Inverter/Converter.

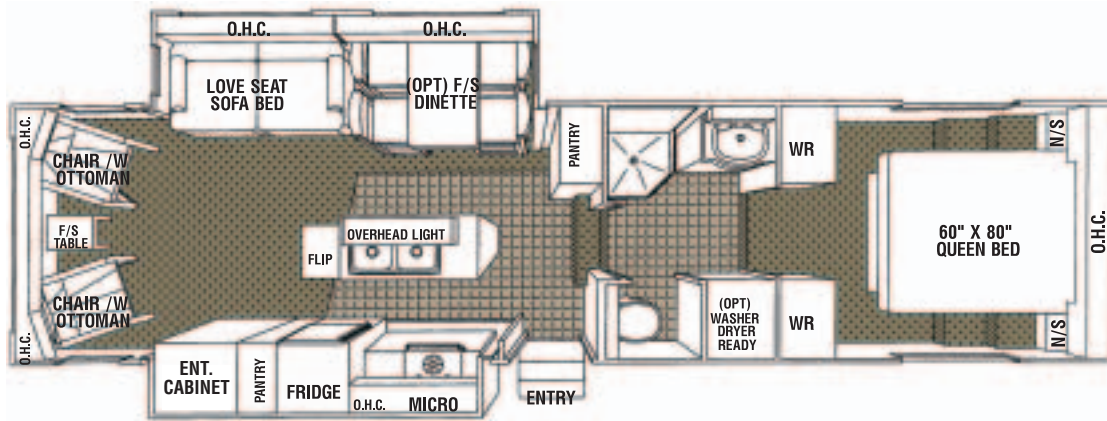
OPTIONAL FEATURE PACKAGE UPGRADES

INTERIOR PACKAGE: Fluorescent ceiling lights, day/night shades, oak galley area flooring.

COMFORT PACKAGE: 15,000 BTU air conditioner upgrade, Fantastic powered roof vent in bedroom, central vacuum, paddle fan.

MANDATORY SUPER PACK FEATURE UPGRADES

Never Lube Axles, Bedroom 12V CD/Clock Radio with remote, DVD/Tuner 5 Speaker Surround Sound, Bi-Fold Burner Cover, Solar Panel Trickle Charger on Air Conditioner, Down Draft Cool Air Diverter, Brushed Nickel Single Lever Kitchen Tap Set, Exterior Quick Connect for BBQ, New Exterior Graphics Package, Mirrored Doors in Bedroom, Cathedral Mirrored OHC's in Living area, Attic Vents, Baseboard and Oak ceiling Molding, OHC in Bedroom, Stainless Steel Look Microwave, Bullet Style Lighting included in OHC's in Loveseat/Dinette Slideout, and bedroom area.



Titanium®

GLENDALE, I.V.

31E36MK

FIFTH WHEEL

2005 MODEL YEAR

OVERALL LENGTH	LENGTH-PIN TO BUMPER	G.V.W.R	DRY PIN WEIGHT	DRY WEIGHT	OVERALL HEIGHT	MAIN BODY WIDTH
36'-4"	31'-2"	11,817 lbs	1,759 lbs	9,385 lbs	12'-8"	96"

CONSTRUCTION

SIDEWALLS: Vacuum bonded ultra smooth Lamilux fiberglass siding, 1-1/2" light weight Aluminum Perimeter sidewall framing, and 1-1/2" rigid foam insulation.

ROOF: Seamless rubber roof membrane is bonded to 3/8" plywood decking. Full 5-1/2" tapered aluminum truss framing. Thick fiberglass batt insulation. Cathedral ceilings in the bedroom.

FLOOR: Laminated composite floor structure includes 3" foam insulation panel bonded between plywood panels and perimeter framing. Darco polyethylene moisture barrier between chassis underbelly. Seam guard under vinyl floor coverings.

CHASSIS: 11" combination Z channel/steel tube frame construction, axle shocks at all wheels, Goodyear ST235/80R16 "D" radial tires, venting wheel rims 12"x2" electric brakes, underslung spare tire and rim, snap release pins on powered front landing gear, power front landing gear includes a safety shut off switch, 2 stabilizer jacks, 72 degree adjustable pin box.

SLIDEOUT SPECIFICATIONS: Low maintenance powerful rack and gear 12V direct drive motor system, flush floor design, gear box release lever included for system manual override.

INTERIOR CABINET DOORS: Combination of Raised panel & cathedral style mirrored Oak cabinet doors. Easy-Glide metal roller system on all drawers.

WINDOWS: Radius corner tinted SAFETY glass.

ENTRANCE DOOR: 30" wide radius corner combination entrance door with screen and deadbolt lock, easy fold-away 24" triple rise entry steps, fold away assist handle on entry door, porch light.

APPLIANCES

REFRIGERATOR: Dometic 8 cubic ft double door, 2 way gas/110v.

RANGE: Wedgewood High Output 21" 3 burner, piezo ignitor.

FURNACE: Atwood 2 stage Excalibur furnace 40,000 BTU ducted in floor heat system.

MICROWAVE OVEN: Dometic 24" 1.3 cubic ft with turntable and built in range hood, light and exhaust fan.

AIR CONDITIONER: Dometic Briskair 13,500 BTU thermal insulated ducted in ceiling cool air system.

ENTERTAINMENT

STEREO: DVD/ CD Tuner 5 speaker Surround Sound. (Mandatory Super Pack)

BEDROOM STEREO: Stereo 12V CD/Clock Radio with remote. (Mandatory Super Pack)

TV ANTENNA: Winegard RV antenna with booster.

TV HOOKUP: Coax cable hookup in bedroom and living area.

TELEPHONE JACK: Standard equipment.

SATELLITE HOOKUP: Pre-wired for quick dish connection to the RV.

AWNING

A&E 20' AWNING: Pewter/White. Awning features patented rugged steel roller tube and heavy duty torsion spring 8' extension.

PLUMBING & ELECTRICAL

Sealand Traveler Lite foot pedal flush china toilet with hand spray (Mandatory Option), Lyons corner shower and surround, single lever Brushed Nickel faucet in kitchen with sprayer, Brushed nickel double sinks, and sink cover included, Euro bath vanity with Brushed Nickel single lever tap, water heater by pass kit, Water Filtration System.

WATER HEATER: Atwood XT advance water heater system featuring Exothermal Technology 10 Gallon gas/electric (Direct Spark Ignition) that provides the equivalent to 16 gallons of hot water (Mandatory Option).

HOLDING TANKS: Holding tanks are enclosed, insulated and heated. Garden Style non-freeze drain tap on fresh water tank, sewage tank flush system.

HOLDING TANK CAPACITIES:

FRESH: 63 gallon. **GREY:** 49 gallon. **SEWAGE:** 49 gallon.

ELECTRICAL CONVERTER: Progressive Dynamics 9100 series converter with Charge Wizard.

HOOKUP: 50 AMP. (Detachable Power Cord)

STANDARD FEATURES

Fiberglass front and back end caps, roof rack and ladder, oak edge counter tops, exterior rinse shower, venetian blinds, 2 x 30 lb propane bottles with auto change over regulator, systems monitor panel, color coordinated ABS lower sidewall skirting, large under bed storage compartment, 60"x80" queen bed, chairs with ottoman, smoke detector, French doors into bedroom, decorative corner blocks on the interior slideouts, 400W Inverter.

OPTIONAL EQUIPMENT

Twin beds, free standing Oak dinette with storage in place of booth style dinette, day/night shades, thermopane windows, storm windows, aluminum rims, dual exterior security lights, electric fireplace, Wall-A-away recliners, washer dryer ready, skylight in bathroom, porcelain toilet (Mandatory Option), Dual Front Power Jacks (Mandatory Option), Loveseat (Mandatory Option), 27" Stereo TV, 1,000W Inverter/Converter.

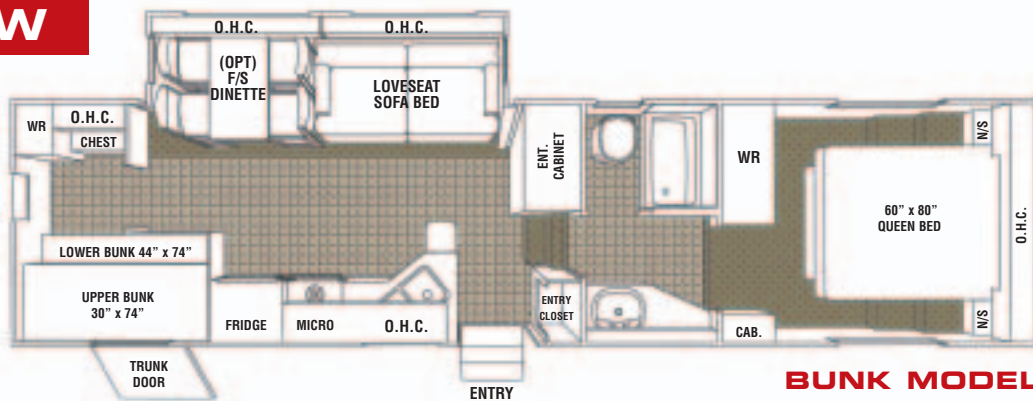
OPTIONAL FEATURE PACKAGE UPGRADES

INTERIOR PACKAGE: Fluorescent ceiling lights, day/night shades, Oak galley area flooring.

COMFORT PACKAGE: 15,000 BTU air conditioner upgrade, Fantastic powered roof vent in bedroom, central vacuum, paddle fan.

MANDATORY SUPER PACK FEATURE UPGRADES

Never Lube Axles, Bedroom 12V CD/Clock Radio with remote, DVD/Tuner 5 Speaker Surround Sound, Bi-Fold Burner Cover, Solar Panel Trickle Charger on Air Conditioner, Down Draft Cool Air Diverter, Brushed Nickel Single Lever Kitchen Tap Set, Exterior Quick Connect for BBQ, New Exterior Graphics Package, Mirrored Doors in Bedroom, Cathedral Mirrored OHC's in Living area, Attic Vents, Baseboard and Oak ceiling Molding, OHC in Bedroom, Stainless Steel Look Microwave, Bullet Style Lighting included on Rear OHC's in living area, bedroom, and loveseat/dinette Slideout area.

NEW**BUNK MODEL****Titanium[®]**
GLENDALE, ILL.**31E36TBR****FIFTH WHEEL
2005 MODEL YEAR**

OVERALL LENGTH	LENGTH-PIN TO BUMPER	G.V.W.R	DRY PIN WEIGHT	DRY WEIGHT	OVERALL HEIGHT	MAIN BODY WIDTH
35'-10"	30'-8"	10,994 lbs*	1,657 lbs*	8,708 lbs*	12'-8"	96"

CONSTRUCTION

SIDEWALLS: Vacuum bonded ultra smooth Lamilux fiberglass siding, 1-1/2" light weight Aluminum Perimeter sidewall framing, and 1" rigid foam insulation.

ROOF: Seamless rubber roof membrane is bonded to 3/8" plywood decking. Full 51/2" tapered aluminum truss framing. Thick fiberglass batt insulation. Cathedral ceilings in the bedroom.

FLOOR: Laminated composite floor structure includes 3" foam insulation panel bonded between plywood panels and perimeter framing. Darco polyethylene moisture barrier between chassis underbelly. Seam guard under vinyl floor coverings.

CHASSIS: 11" combination Z channel/steel tube frame construction, 3" heavy duty axle assemblies, axle shocks at all wheels, Goodyear ST235/80R16 "D" radial tires, venting wheel rims 12"x2" electric brakes, under slung spare tire and rim, snap release pins on powered front landing gear, power front landing gear includes a safety shut off switch, 2 stabilizer jacks, 72 degree adjustable pin box.

SLIDEOUT SPECIFICATIONS: Low maintenance powerful rack and gear 12V direct drive motor system, flush floor design, gearbox release lever included for system manual override.

INTERIOR CABINET DOORS: Combination of Raised panel & cathedral style mirrored Oak cabinet doors. Easy-Glide metal roller system on all drawers.

WINDOWS: Radius corner tinted SAFETY glass.

ENTRANCE DOOR: 30" wide radius corner combination entrance door with screen and deadbolt lock, easy fold-away 24" triple rise entry steps, fold away assist handle on entry door, porch light.

APPLIANCES

REFRIGERATOR: Dometic 8 cubic ft double door, 2 way gas/110v.

RANGE: Wedgewood High Output 21" 3 burner, piezo ignitor, includes a bi-fold burner cover.

FURNACE: Atwood 2 stage Excalibur furnace 40,000 BTU ducted in floor heat system.

MICROWAVE OVEN: Dometic 24" 1.3 cubic ft with turntable and

built in range hood, light and exhaust fan.

AIR CONDITIONER: Dometic Briskair 13,500 BTU thermal insulated ducted in ceiling cool air system.

ENTERTAINMENT

STEREO: DVD/CD Tuner 5 speaker Surround Sound (Mandatory Super Pack)

BEDROOM STEREO: Stereo 12V CD/Clock Radio with remote. (Mandatory Super Pack)

TV ANTENNA: Winegard RV antenna with booster

TV HOOKUP: Coax cable hookup in bedroom and living area.

TELEPHONE JACK: Standard equipment.

SATELLITE HOOKUP: Pre-wired for quick dish connection to the RV.

AWNING

A&E 19' AWNING: Pewter/White. Awning features patented rugged steel roller tube and heavy duty torsion spring 8' extension.

PLUMBING & ELECTRICAL

Sealand Traveler Lite foot pedal flush china toilet with hand spray (Mandatory Option), Lyons tub and surround, single lever Brushed Nickel faucet in kitchen with sprayer, large double brushed nickel sinks, and sink cover included, brushed nickel single lever tap in bathroom, water heater by pass kit, Water Filtration System.

WATER HEATER: Atwood XT H2OT Advanced 10 Gallon gas/electric (Direct Spark Ignition) featuring Exothermal Technology which provides the equivalence of 16 Gallons of hot water.

HOLDING TANKS: Holding tanks are enclosed, insulated and heated. Garden Style non-freeze drain tap on fresh water tank, sewage tank flush system

HOLDING TANK CAPACITIES:

FRESH: 48 gallon **GREY:** 49 gallon **SEWAGE:** 49 gallon

ELECTRICAL: Progressive Dynamics 9100 series converter w/charge wizard

HOOKUP: 30 AMP

STANDARD FEATURES

Fiberglass front and back end caps, roof rack and ladder, oak edge counter tops, exterior rinse shower, venetian blinds, 2 x 30 lb propane bottles with auto change over regulator, systems monitor panel, axle shocks kit, color coordinated ABS lower sidewall skirting, 400W Inverter, smoke detector, under bed storage compartment, 60"x80" queen bed.

OPTIONAL EQUIPMENT

Twin beds, Loveseat Sofa Bed (Mandatory Option), Oak free standing dinette in place of booth style dinette, day/night shades, thermopane windows, storm windows, polished aluminum rims, exterior security lights, dual front landing gear (Mandatory Option), porcelain toilet (Mandatory Option), electric fireplace, generator ready connection, skylight in bathroom, 27" Stereo TV, 1,000W Inverter/Converter.

**OPTIONAL
FEATURE PACKAGE UPGRADES**

INTERIOR PACKAGE: Fluorescent ceiling lights, day/night shades, Oak galley area flooring.

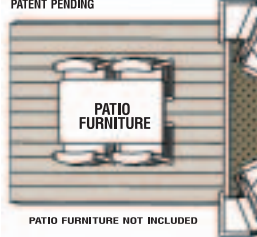
COMFORT PACKAGE: 15,000 BTU air conditioner upgrade, Fantastic powered roof vent in bedroom, central vacuum, paddle fan.

**MANDATORY SUPER PACK
FEATURE UPGRADES**

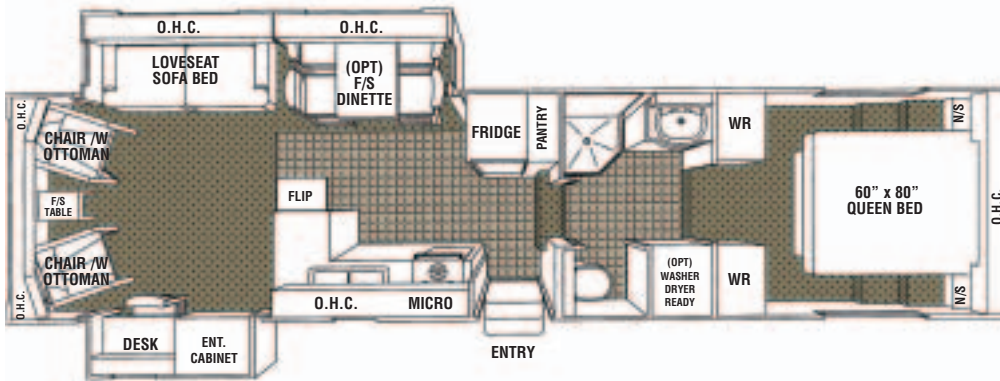
Never Lube Axles, Bedroom 12V CD/Clock Radio with remote, DVD/Tuner 5 Speaker Surround Sound, Bi-Fold Burner Cover, Solar Panel Trickle Charger on Air Conditioner, Down Draft Cool Air Diverter, Brushed Nickel Single Lever Kitchen Tap Set, Exterior Quick Connect for BBQ, New Exterior Graphics Package, Mirrored Doors in Bedroom, Cathedral Mirrored OHC's in Living area, Attic Vents, Baseboard and Oak ceiling Molding, OHC in Bedroom, Stainless Steel Look Microwave, Bullet Style Lighting included in OHC's in Loveseat/Dinette Slideout, and bedroom area.

*Preliminary weight specifications only

OPTIONAL SCREENED REAR DECK PATIO
PATENT PENDING



PATIO FURNITURE NOT INCLUDED



Titanium[®]

GLENDALE, VY

32E37DS

FIFTH WHEEL

2005 MODEL YEAR

OVERALL LENGTH	LENGTH-PIN TO BUMPER	G.V.W.R	DRY PIN WEIGHT	DRY WEIGHT	OVERALL HEIGHT	MAIN BODY WIDTH
37'-4"	32'-2"	12,103 lbs	1,757 lbs	9,624 lbs	12'-8"	96"

CONSTRUCTION

SIDEWALLS: Vacuum bonded ultra smooth Lamilux fiberglass siding. 1-1/2" light weight Aluminum Perimeter sidewall framing, and 1-1/2" rigid foam insulation.

ROOF: Seamless rubber roof membrane is bonded to 3/8" plywood decking. Full 5-1/2" tapered aluminum truss framing. Thick fiberglass batt insulation. Cathedral ceilings in the bedroom.

FLOOR: Laminated composite floor structure includes 3" foam insulation panel bonded between plywood panels and perimeter framing. Darco polyethylene moisture barrier between chassis underbelly. Seam guard under vinyl floor coverings.

CHASSIS: 11" combination Z channel/steel tube frame construction, axle shocks at all wheels, Goodyear ST235/80R16 "D" radial tires, venting wheel rims 12"x2" electric brakes, underslung spare tire and rim, snap release pins on powered front landing gear, power front landing gear includes a safety shut off switch, 2 stabilizer jacks, 72 degree adjustable pin box.

SLIDEOUT SPECIFICATIONS: Low maintenance powerful rack and gear 12V direct drive motor system, flush floor design, gear box release lever included for system manual override.

INTERIOR CABINET DOORS: Combination of Raised panel & cathedral style mirrored Oak cabinet doors. Easy-Glide metal roller system on all drawers.

WINDOWS: Radius corner tinted SAFETY glass.

ENTRANCE DOOR: 30" wide radius corner combination entrance door with screen and deadbolt lock, easy fold-away 24" triple rise entry steps, fold away assist handle on entry door, porch light.

APPLIANCES

REFRIGERATOR: Dometic 8 cubic ft double door, 2 way gas/110v.

RANGE: Wedgewood High Output 21" 3 burner, piezo ignitor.

FURNACE: Atwood 2 stage Excalibur furnace 40,000 BTU ducted in floor heat system.

MICROWAVE OVEN: Dometic 24" 1.3 cubic ft with turntable and built in range hood, light and exhaust fan.

AIR CONDITIONER: Dometic Briskair 13,500 BTU thermal insulated ducted in ceiling cool air system.

ENTERTAINMENT

STEREO: DVD/CD Tuner 5 speaker Surround Sound. (Mandatory Super Pack)

BEDROOM STEREO: Stereo 12V CD/Clock Radio with remote. (Mandatory Super Pack)

TV ANTENNA: Winegard RV antenna with booster

TV HOOKUP: Coax cable hookup in bedroom and living area.

TELEPHONE JACK: Standard equipment.

SATELLITE HOOKUP: Pre-wired for quick dish connection to the RV.

AWNING

A&E 15' AWNING: Pewter/White. Awning features patented rugged steel roller tube and heavy duty torsion spring 8' extension.

PLUMBING & ELECTRICAL

Sealand Traveler Lite foot pedal flush china toilet with hand spray (Mandatory Option), Lyons corner shower and surround, single lever Brushed Nickel faucet in kitchen with sprayer, brushed nickel double sinks and sink cover, large white bath vanity and Brushed Nickel single lever tap, water heater by pass kit, Water Filtration System.

WATER HEATER: Atwood XT advance water heater system featuring Exothermal Technology 10 Gallon gas/electric (Direct Spark Ignition) that provides the equivalent to 16 gallons of hot water (Mandatory Option).

HOLDING TANKS: Holding tanks are enclosed, insulated and heated. Garden Style non-freeze drain tap on fresh water tank, sewage tank flush system.

HOLDING TANK CAPACITIES:

FRESH: 48 gallon. **GREY:** 49 gallon. **SEWAGE:** 49 gallon.

ELECTRICAL CONVERTER: Progressive Dynamics 9100 series converter with Charge Wizard.

HOOKUP: 50 AMP. (Detachable Power Cord)

STANDARD FEATURES

Fiberglass front and back end caps, Sofa Bed, roof rack and ladder, oak edge counter tops, exterior rinse shower, venetian blinds, 2 x 30 lb propane bottles with auto change over regulator, systems monitor panel, color coordinated ABS lower sidewall skirting, large under bed storage compartment, 60"x80" queen bed, 2 chairs with ottoman, smoke detector, French doors into bedroom, decorative corner blocks on the interior slideouts, 400W Inverter.

OPTIONAL EQUIPMENT

Twin beds, free standing Oak dinette with storage in place of booth style dinette, day/night shades, thermopane windows, storm windows, aluminum rims, dual exterior security lights, electric fireplace, Wall-A-way recliners, washer dryer ready, skylight in bathroom, porcelain toilet (Mandatory Option), Dual Front Power Jacks (Mandatory Option), rear patio deck, 27" Stereo TV, 1,000W Inverter/Converter.

OPTIONAL FEATURE PACKAGE UPGRADES

INTERIOR PACKAGE: Fluorescent ceiling lights, day/night shades, Oak galley area flooring.

COMFORT PACKAGE: 15,000 BTU air conditioner upgrade, Fantastic powered roof vent in bedroom, central vacuum, paddle fan.

MANDATORY SUPER PACK FEATURE UPGRADES

Never Lube Axles, Bedroom 12V CD/Clock Radio with remote, DVD/Tuner 5 Speaker Surround Sound, Bi-Fold Burner Cover, Solar Panel Trickle Charger on Air Conditioner, Down Draft Cool Air Diverter, Brushed Nickel Single Lever Kitchen Tap Set, Exterior Quick Connect for BBQ, New Exterior Graphics Package, Mirrored Doors in Bedroom, Cathedral Mirrored OHC's in Living area, Attic Vents, Baseboard and Oak ceiling Molding, OHC in Bedroom, Stainless Steel Look Microwave, Bullet Style Lighting included on Rear OHC's in living area, bedroom, and Sofa Slideout area.

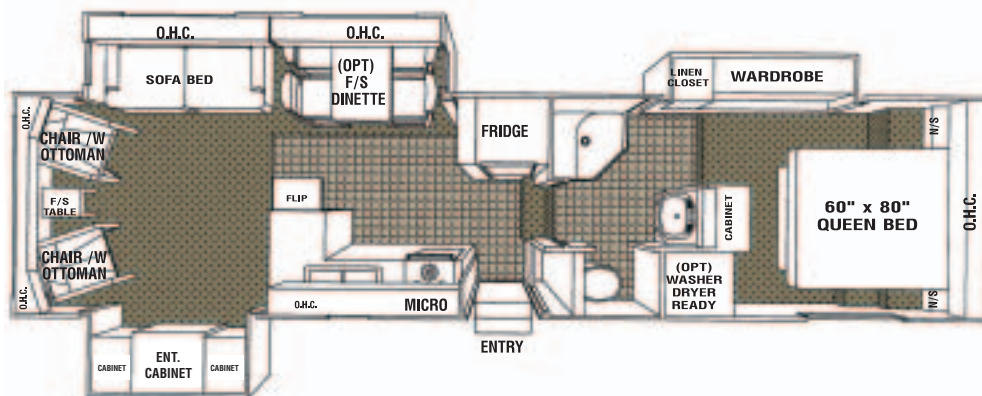
NEW

OPTIONAL SCREENED REAR DECK PATIO

PATENT PENDING



PATIO FURNITURE NOT INCLUDED



Titanium®

GLENDALE, VY

32E37TS

FIFTH WHEEL

2005 MODEL YEAR

OVERALL LENGTH	LENGTH-PIN TO BUMPER	G.V.W.R	DRY PIN WEIGHT	DRY WEIGHT	OVERALL HEIGHT	MAIN BODY WIDTH
37'-4"	32'-2"	12,831 lbs	2,028 lbs	10,231 lbs	12'-8"	96"

CONSTRUCTION

SIDEWALLS: Vacuum bonded ultra smooth Lamilux fiberglass siding. 1-1/2" light weight Aluminum Perimeter sidewall framing, and 1-1/2" rigid foam insulation.

ROOF: Seamless rubber roof membrane is bonded to 3/8" plywood decking. Full 5-1/2" tapered aluminum truss framing. Thick fiberglass batt insulation. Cathedral ceilings in the bedroom.

FLOOR: Laminated composite floor structure includes 3" foam insulation panel bonded between plywood panels and perimeter framing. Darco polyethylene moisture barrier between chassis underbelly. Seam guard under vinyl floor coverings.

CHASSIS: 11" combination Z channel/steel tube frame construction, axle shocks at all wheels, Goodyear ST235/80R16 "D" radial tires, venting wheel rims 12"x2" electric brakes, underslung spare tire and rim, snap release pins on powered front landing gear, power front landing gear includes a safety shut off switch, 2 stabilizer jacks, 72 degree adjustable pin box.

SLIDEOUT SPECIFICATIONS: Low maintenance powerful rack and gear 12V direct drive motor system, flush floor design, gear box release lever included for system manual override.

INTERIOR CABINET DOORS: Combination of Raised panel & cathedral style mirrored Oak cabinet doors. Easy-Glide metal roller system on all drawers.

WINDOWS: Radius corner tinted SAFETY glass.

ENTRANCE DOOR: 30" wide radius corner combination entrance door with screen and deadbolt lock, easy fold-away 24" triple rise entry steps, fold away assist handle on entry door, porch light.

APPLIANCES

REFRIGERATOR: Dometic 8 cubic ft double door, 2 way gas/110v.

RANGE: Wedgewood High Output 21" 3 burner, piezo ignitor.

FURNACE: Atwood 2 stage Excalibur furnace 40,000 BTU ducted in floor heat system.

MICROWAVE OVEN: Dometic 24" 1.3 cubic ft with turntable and built in range hood, light and exhaust fan.

AIR CONDITIONER: Dometic Briskair 13,500 BTU thermal insulated ducted in ceiling cool air system.

ENTERTAINMENT

STEREO: DVD/CD Tuner 5 speaker Surround Sound. (Mandatory Super Pack)

BEDROOM STEREO: Stereo 12V CD/Clock Radio with remote. (Mandatory Super Pack)

TV ANTENNA: Winegard RV antenna with booster.

TV HOOKUP: Coax cable hookup in bedroom and living area.

TELEPHONE JACK: Standard equipment.

SATELLITE HOOKUP: Pre-wired for quick dish connection to the RV.

AWNING

A&E 15' AWNING: Pewter/White. Awning features patented rugged steel roller tube and heavy duty torsion spring 8' extension.

PLUMBING & ELECTRICAL

Sealand Traveler Lite foot pedal flush china toilet with hand spray (Mandatory Option), Sit down corner shower and surround, single lever Brushed Nickel faucet in kitchen with sprayer, brushed nickel double sinks and sink cover, bath vanity with Brushed Nickel single lever tap, water heater by pass kit, Water Filtration System.

WATER HEATER: Atwood XT advance water heater system featuring Exothermal Technology 10 Gallon gas/electric (Direct Spark Ignition) that provides the equivalent to 16 gallons of hot water (Mandatory Option).

HOLDING TANKS: Holding tanks are enclosed, insulated and heated. Garden Style non-freeze drain tap on fresh water tank, sewage tank flush system.

HOLDING TANK CAPACITIES:

FRESH: 48 gallon. **GREY:** 49 gallon. **SEWAGE:** 49 gallon.

ELECTRICAL CONVERTER: Progressive Dynamics 9100 series converter with Charge Wizard.

HOOKUP: 50 AMP. (Detachable Power cord)

STANDARD FEATURES

Fiberglass front and back end caps, Sofa Bed, roof rack and ladder, oak edge counter tops, exterior rinse shower, venetian blinds, 2 x 30 lb propane bottles with auto change over regulator, systems monitor panel, color coordinated ABS lower sidewall skirting, large under bed storage compartment, 60"x80" queen bed, chairs with ottoman, smoke detector, decorative corner blocks on the interior slideouts, 400W Inverter.

OPTIONAL EQUIPMENT

Free standing Oak dinette with storage in place of booth style dinette, day/night shades, thermopane windows, storm windows, aluminum rims, dual exterior security lights, electric fireplace, Wall-A-way recliners, washer dryer ready, skylight in bathroom, porcelain toilet (Mandatory Option), Dual Front Power Jacks (Mandatory Option), rear patio deck, 1,000W Inverter/Converter, 27" Stereo TV.

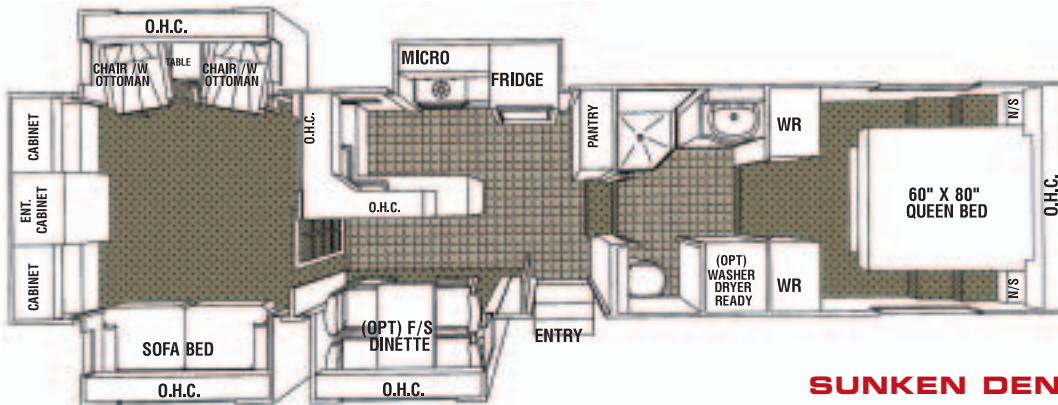
OPTIONAL FEATURE PACKAGE UPGRADES

INTERIOR PACKAGE: Fluorescent ceiling lights, day/night shades, Oak galley area flooring.

COMFORT PACKAGE: 15,000 BTU air conditioner upgrade, Fantastic powered roof vent in bedroom, central vacuum, paddle fan.

MANDATORY SUPER PACK FEATURE UPGRADES

Never Lube Axles, Bedroom 12V CD/Clock Radio with remote, DVD/Tuner 5 Speaker Surround Sound, Bi-Fold Burner Cover, Solar Panel Trickle Charger on Air Conditioner, Down Draft Cool Air Diverter, Brushed Nickel Single Lever Kitchen Tap Set, Exterior Quick Connect for BBQ, New Exterior Graphics Package, Mirrored Doors in Bedroom, Cathedral Mirrored OHC's in Living area, Attic Vents, Baseboard and Oak ceiling Molding, OHC in Bedroom, Stainless Steel Look Microwave, Bullet Style Lighting included on Rear OHC's in living area, bedroom, and Sofa Slideout area.



SUNKEN DEN

Titanium[®]

GLENDALE, I.V.

33E38SD

FIFTH WHEEL 2005 MODEL YEAR

OVERALL LENGTH	LENGTH-PIN TO BUMPER	G.V.W.R	DRY PIN WEIGHT	DRY WEIGHT	OVERALL HEIGHT	MAIN BODY WIDTH
39'-1"	33'-11"	13,079 lbs	1,627 lbs	10,446 lbs	12'-8"	96"

CONSTRUCTION

SIDEWALLS: Vacuum bonded ultra smooth Lamilux fiberglass siding. 1-1/2" light weight Aluminum Perimeter sidewall framing, and 1-1/2" rigid foam insulation.

ROOF: Seamless rubber roof membrane is bonded to 3/8" plywood decking. Full 5-1/2" tapered aluminum truss framing. Thick fiberglass batt insulation. Cathedral ceilings in the bedroom.

FLOOR: Laminated composite floor structure includes 3" foam insulation panel bonded between plywood panels and perimeter framing. Darco polyethylene moisture barrier between chassis underbelly. Seam guard under vinyl floor coverings.

CHASSIS: 11" combination Z channel/steel tube frame construction, axle shocks at all wheels, Goodyear ST235/80R16 "D" radial tires, venting wheel rims 12"x2" electric brakes, underslung spare tire and rim, snap release pins on powered front landing gear, power front landing gear includes a safety shut off switch, 2 stabilizer jacks, 72 degree adjustable pin box.

SLIDEOUT SPECIFICATIONS: Low maintenance powerful rack and gear 12V direct drive motor system, flush floor design, gear box release lever included for system manual override.

INTERIOR CABINET DOORS: Combination of Raised panel & cathedral style mirrored Oak cabinet doors. Easy-Glide metal roller system on all drawers.

WINDOWS: Radius corner tinted SAFETY glass.

ENTRANCE DOOR: 30" wide radius corner combination entrance door with screen and deadbolt lock, easy fold-away 24" triple rise entry steps, fold away assist handle on entry door, porch light.

APPLIANCES

REFRIGERATOR: Dometic 8 cubic ft double door, 2 way gas/110v.

RANGE: Wedgewood High Output 21" 3 burner, piezo ignitor.

FURNACE: Atwood 2 stage Excalibur furnace 40,000 BTU ducted in floor heat system.

MICROWAVE OVEN: Dometic 24" 1.3 cubic ft with turntable and built in range hood, light and exhaust fan.

AIR CONDITIONER: Dometic Briskair 13,500 BTU thermal insulated ducted in ceiling cool air system.

ENTERTAINMENT

STEREO: DVD/CD Tuner 5 speaker Surround Sound. (Mandatory Super Pack)

BEDROOM STEREO: Stereo 12V CD/Clock Radio with remote. (Mandatory Super Pack)

TV ANTENNA: Winegard RV antenna with booster.

TV HOOKUP: Coax cable hookup in bedroom and living area.

TELEPHONE JACK: Standard equipment.

SATELLITE HOOKUP: Pre-wired for quick dish connection to the RV.

AWNING

A&E 12' AWNING: Pewter/White. Awning features patented rugged steel roller tube and heavy duty torsion spring 8' extension.

PLUMBING & ELECTRICAL

Sealand Traveler Lite foot pedal flush china toilet with hand spray (Mandatory Option), Lyons corner shower and surround, single lever Brushed Nickel faucet in kitchen with sprayer, Large corner brushed nickel double sinks and sink cover, Euro bath vanity and Brushed Nickel single lever tap, water heater by pass kit, Water Filtration System.

WATER HEATER: Atwood XT advance water heater system featuring Exothermal Technology 10 Gallon gas/electric (Direct Spark Ignition) that provides the equivalent to 16 gallons of hot water (Mandatory Option).

HOLDING TANKS: Holding tanks are enclosed, insulated and heated. Garden Style non-freeze drain tap on fresh water tank, sewage tank flush system.

HOLDING TANK CAPACITIES:

FRESH: 63 gallon. **GREY:** 49 gallon. **SEWAGE:** 49 gallon.

ELECTRICAL CONVERTER: Progressive Dynamics 9100 series converter with Charge Wizard.

HOOKUP: 50 AMP. (Detachable Power Cord)

STANDARD FEATURES

Fiberglass front and back end caps, Sofa Bed, roof rack and ladder, oak edge counter tops, exterior rinse shower, venetian blinds, 2 x 30 lb propane bottles with auto change over regulator, systems monitor panel, color coordinated ABS lower sidewall skirting, large under bed storage compartment, 60"x80" queen bed, 2 chairs with ottoman, smoke detector, French doors into bedroom, sliding French door in Den, rear entertainment layout, decorative corner blocks on the interior slideouts, 400W Inverter.

OPTIONAL EQUIPMENT

Twin beds, free standing Oak dinette with storage in place of booth style dinette, day/night shades, thermopane windows, storm windows, aluminum rims, dual exterior security lights, electric fireplace, Wall-A-away recliners, washer dryer ready, skylight in bathroom, porcelain toilet (Mandatory Option), Dual Front Power Jacks (Mandatory Option), 1,000W Inverter/Converter, 27" Stereo TV.

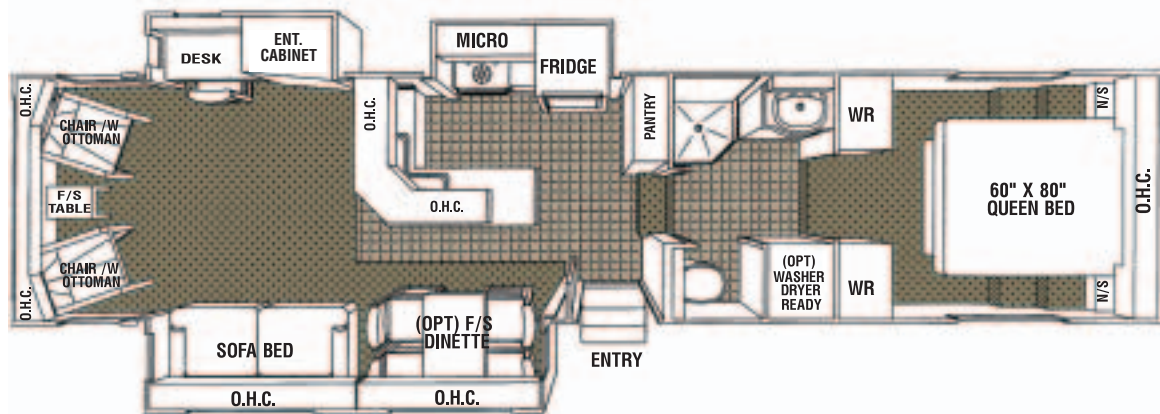
OPTIONAL FEATURE PACKAGE UPGRADES

INTERIOR PACKAGE: Fluorescent ceiling lights, day/night shades, Oak galley area flooring.

COMFORT PACKAGE: 15,000 BTU air conditioner upgrade, Fantastic powered roof vent in bedroom, central vacuum, paddle fan

MANDATORY SUPER PACK FEATURE UPGRADES

Never Lube Axles, Bedroom 12V CD/Clock Radio with remote, DVD/Tuner 5 Speaker Surround Sound, Bi-Fold Burner Cover, Solar Panel Trickle Charger on Air Conditioner, Down Draft Cool Air Diverter, Brushed Nickel Single Lever Kitchen Tap Set, Exterior Quick Connect for BBQ, New Exterior Graphics Package, Mirrored Doors in Bedroom, Cathedral Mirrored OHC's in Living area, Attic Vents, Baseboard and Oak ceiling Molding, OHC in Bedroom, Stainless Steel Look Microwave, Bullet Style Lighting included on Rear OHC's in living area and, bedroom, Sofa/Dinette Slideout area & bedroom.



Titanium®

GLENDALE, VY

33E38TS

FIFTH WHEEL

2005 MODEL YEAR

OVERALL LENGTH	LENGTH-PIN TO BUMPER	G.V.W.R	DRY PIN WEIGHT	DRY WEIGHT	OVERALL HEIGHT	MAIN BODY WIDTH
39'-1"	33'-11"	13,067 lbs	2,000 lbs	10,436 lbs	12'-8"	96"

CONSTRUCTION

SIDEWALLS: Vacuum bonded ultra smooth Lamilux fiberglass siding. 1-1/2" light weight Aluminum Perimeter sidewall framing, and 1-1/2" rigid foam insulation.

ROOF: Seamless rubber roof membrane is bonded to 3/8" plywood decking. Full 5-1/2" tapered aluminum truss framing. Thick fiberglass batt insulation. Cathedral ceilings in the bedroom.

FLOOR: Laminated composite floor structure includes 3" foam insulation panel bonded between plywood panels and perimeter framing. Darco polyethylene moisture barrier between chassis underbelly. Seam guard under vinyl floor coverings.

CHASSIS: 11" combination Z channel/steel tube frame construction, axle shocks at all wheels, Goodyear ST235/80R16 "D" radial tires, venting wheel rims 12"x2" electric brakes, underslung spare tire and rim, snap release pins on powered front landing gear, power front landing gear includes a safety shut off switch, 2 stabilizer jacks, 72 degree adjustable pin box.

SLIDEOUT SPECIFICATIONS: Low maintenance powerful rack and gear 12V direct drive motor system, flush floor design, gear box release lever included for system manual override.

INTERIOR CABINET DOORS: Combination of Raised panel & cathedral style mirrored Oak cabinet doors. Easy-Glide metal roller system on all drawers.

WINDOWS: Radius corner tinted SAFETY glass.

ENTRANCE DOOR: 30" wide radius corner combination entrance door with screen and deadbolt lock, easy fold-away 24" triple rise entry steps, fold away assist handle on entry door, porch light.

APPLIANCES

REFRIGERATOR: Dometic 8 cubic ft double door, 2 way gas/110v.

RANGE: Wedgewood High Output 21" 3 burner, piezo ignitor.

FURNACE: Atwood 2 stage Excalibur furnace 40,000 BTU ducted in floor heat system.

MICROWAVE OVEN: Dometic 24" 1.3 cubic ft with turntable and built in range hood, light and exhaust fan.

AIR CONDITIONER: Dometic Briskair 13,500 BTU thermal insulated ducted in ceiling cool air system.

ENTERTAINMENT

STEREO: DVD/Tuner 5 speaker Surround Sound. (Mandatory Super Pack)

BEDROOM STEREO: Stereo 12V CD/Clock Radio with remote. (Mandatory Super Pack)

TV ANTENNA: Winegard RV antenna with booster.

TV HOOKUP: Coax cable hookup in bedroom and living area.

TELEPHONE JACK: Standard equipment.

SATELLITE HOOKUP: Pre-wired for quick dish connection to the RV.

AWNING

A&E 12' AWNING: Pewter/White. Awning features patented rugged steel roller tube and heavy duty torsion spring 8' extension.

PLUMBING & ELECTRICAL

Sealand Traveler Lite foot pedal flush china toilet with hand spray (Mandatory Option), Lyons corner shower and surround, single lever Brushed Nickel faucet in kitchen with sprayer, Large corner brushed nickel double sinks and sink cover, Euro bath vanity and Brushed Nickel single lever tap, water heater by pass kit, Water Filtration System.

WATER HEATER: Atwood XT advance water heater system featuring Exothermal Technology 10 Gallon gas/electric (Direct Spark Ignition) that provides the equivalent to 16 gallons of hot water (Mandatory Option).

HOLDING TANKS: Holding tanks are enclosed, insulated and heated. Garden Style non-freeze drain tap on fresh water tank, sewage tank flush system.

HOLDING TANK CAPACITIES:

FRESH: 63 gallon. **GREY:** 49 gallon. **SEWAGE:** 49 gallon.

ELECTRICAL CONVERTER: Progressive Dynamics 9100 series converter with Charge Wizard.

HOOKUP: 50 AMP. (Detachable Power Cord)

STANDARD FEATURES

Fiberglass front and back end caps, Sofa Bed, roof rack and ladder, oak edge counter tops, exterior rinse shower, venetian blinds, 2 x 30 lb propane bottles with auto change over regulator, systems monitor panel, color coordinated ABS lower sidewall skirting, large under bed storage compartment, 60"x80" queen bed, 2 chairs with ottoman, smoke detector, French doors into bedroom, decorative corner blocks on the interior slideouts, 400W Inverter.

OPTIONAL EQUIPMENT

Twin beds, free standing Oak dinette with storage in place of booth style dinette, day/night shades, thermopane windows, storm windows, aluminum rims, dual exterior security lights, electric fireplace, Wall-A-way recliners, washer dryer ready, skylight in bathroom, porcelain toilet (Mandatory Option), Dual Front Power Jacks (Mandatory Option), rear patio deck, 1,000W Inverter/Converter, 27" Stereo TV.

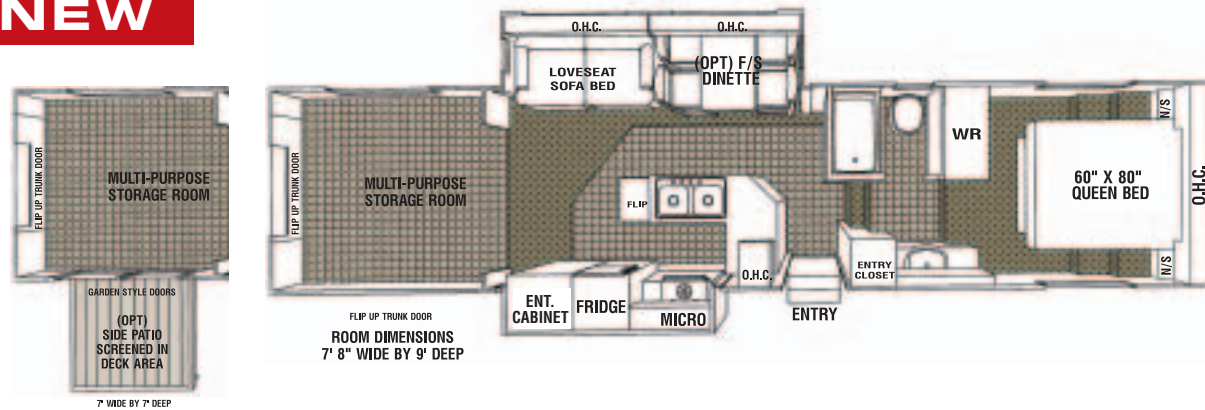
OPTIONAL FEATURE PACKAGE UPGRADES

INTERIOR PACKAGE: Fluorescent ceiling lights, day/night shades, Oak galley area flooring.

COMFORT PACKAGE: 15,000 BTU air conditioner upgrade, Fantastic powered roof vent in bedroom, central vacuum, paddle fan.

MANDATORY SUPER PACK FEATURE UPGRADES

Never Lube Axles, Bedroom 12V CD/Clock Radio with remote, DVD/Tuner 5 Speaker Surround Sound, Bi-Fold Burner Cover, Solar Panel Trickle Charger on Air Conditioner, Down Draft Cool Air Diverter, Brushed Nickel Single Lever Kitchen Tap Set, Exterior Quick Connect for BBQ, New Exterior Graphics Package, Mirrored Doors in Bedroom, Cathedral Mirrored OHC's in Living area, Attic Vents, Baseboard and Oak ceiling Molding, OHC in Bedroom, Stainless Steel Look Microwave, Bullet Style Lighting included on Rear OHC's in living area, bedroom, and Sofa/Dinette Slideout area.

NEW

Titanium[®]

MPRV
Multi Purpose Recreational Vehicle

34E39MPRV

FIFTH WHEEL 2005 MODEL YEAR

OVERALL LENGTH	LENGTH-PIN TO BUMPER	G.V.W.R	DRY PIN WEIGHT	DRY WEIGHT	OVERALL HEIGHT	MAIN BODY WIDTH
39'-10"	34'-8"	14,244 lbs	2,243 lbs	10,190 lbs	12'-8"	96"

CONSTRUCTION

SIDEWALLS: Vacuum bonded ultra smooth Lamilux fiberglass siding, 1-1/2" light weight Aluminum Perimeter sidewall framing, and 1-1/2" rigid foam insulation.

ROOF: Seamless rubber roof membrane is bonded to 3/8" plywood decking. Full 5-1/2" tapered aluminum truss framing. Thick fiberglass batt insulation. Cathedral ceilings in the bedroom.

FLOOR: Laminated composite floor structure includes 3" foam insulation panel bonded between plywood panels and perimeter framing. Darco polyethylene moisture barrier between chassis underbelly. Seam guard under vinyl floor coverings.

CHASSIS: 11" combination Z channel/steel tube frame construction, axle shocks at all wheels, Goodyear LT235/85R16 "G14" radial tires, venting wheel rims 12"-1/4 x 2"-3/8 electric brakes, underslung spare tire and rim, snap release pins on powered front landing gear, power front landing gear includes a safety shut off switch, 2 stabilizer jacks, 72 degree adjustable pin box.

SLIDEOUT SPECIFICATIONS: Low maintenance powerful rack and gear 12V direct drive motor system, flush floor design, gear box release lever included for system manual override.

INTERIOR CABINET DOORS: Combination of Raised panel & cathedral style mirrored Oak cabinet doors. Easy-Glide metal roller system on all drawers.

WINDOWS: Radius corner, tinted SAFETY glass.

ENTRANCE DOOR: 30" wide radius corner combination entrance door with screen and deadbolt lock, easy fold-away 24" triple rise entry steps, fold away assist handle on entry door, porch light.

APPLIANCES

REFRIGERATOR: Dometic 8 cubic ft double door, 2 way gas/110v.

RANGE: Wedgewood High Output 21" 3 burner, piezo ignitor.

FURNACE: Atwood 2 stage Excalibur furnace 40,000 BTU ducted in floor heat system.

MICROWAVE OVEN: Dometic 24" 1.3 cubic ft with turntable and built in range hood, light and exhaust fan.

AIR CONDITIONER: Dometic Briskair 13,500 BTU thermal insulated ducted in ceiling cool air system.

ENTERTAINMENT

STEREO: DVD/CD Tuner 5 speaker Surround Sound. (Mandatory Super Pack)

BEDROOM STEREO: Stereo 12V CD/Clock Radio with remote. (Mandatory Super Pack)

TV ANTENNA: Winegard RV antenna with booster.

TV HOOKUP: Coax cable hookup in bedroom and living area.

TELEPHONE JACK: Standard equipment.

SATELLITE HOOKUP: Pre-wired for quick dish connection to the RV.

AWNING

A&E 18' AWNING: Pewter/White. Awning features patented rugged steel roller tube and heavy duty torsion spring 8' extension.

PLUMBING & ELECTRICAL

Sealand Traveler Lite foot pedal flush china toilet with hand spray (Mandatory Option), Lyons tub and surround, single lever Brushed Nickel faucet in kitchen with sprayer, Large corner brushed nickel double sinks and sink cover, Bath vanity with Brushed Nickel single lever tap, water heater by pass kit, Water Filtration System.

WATER HEATER: Atwood XT advance water heater system featuring Exothermal Technology 10 Gallon gas/electric (Direct Spark Ignition) that provides the equivalent to 16 gallons of hot water (Mandatory Option).

HOLDING TANKS: Holding tanks are enclosed, insulated and heated. Garden Style non-freeze drain tap on fresh water tank, sewage tank flush system.

HOLDING TANK CAPACITIES:

FRESH: 48 gallon. **GREY:** 49 gallon. **SEWAGE:** 49 gallon.

ELECTRICAL CONVERTER: Progressive Dynamics 9100 series converter with Charge Wizard.

HOOKUP: 50 AMP. (Detachable Power Cord)

STANDARD FEATURES

Fiberglass front and back end caps, Loveseat, roof rack and ladder, oak edge counter tops, exterior rinse shower, venetian blinds, 2 x 30 lb propane bottles with auto change over regulator, systems monitor panel, color coordinated ABS lower sidewall skirting, large under bed storage compartment, 60"x80" queen bed, 7,000 lb axle, smoke detector, decorative corner blocks on the interior slideouts, 400W Inverter.

OPTIONAL EQUIPMENT

Twin beds, free standing Oak dinette with storage in place of booth style dinette, day/night shades, thermopane windows, storm windows, dual exterior security lights, electric fireplace, skylight in bathroom, porcelain toilet (Mandatory Option), Dual Front Power Jacks (Mandatory Option), screened side patio deck., 27" Stereo TV, 1,000W Inverter/Converter.

OPTIONAL FEATURE PACKAGE UPGRADES

INTERIOR PACKAGE: Fluorescent ceiling lights, day/night shades, Oak galley area flooring.

COMFORT PACKAGE: 15,000 BTU air conditioner upgrade, Fantastic powered roof vent in bedroom, central vacuum, paddle fan.

MANDATORY SUPER PACK FEATURE UPGRADES

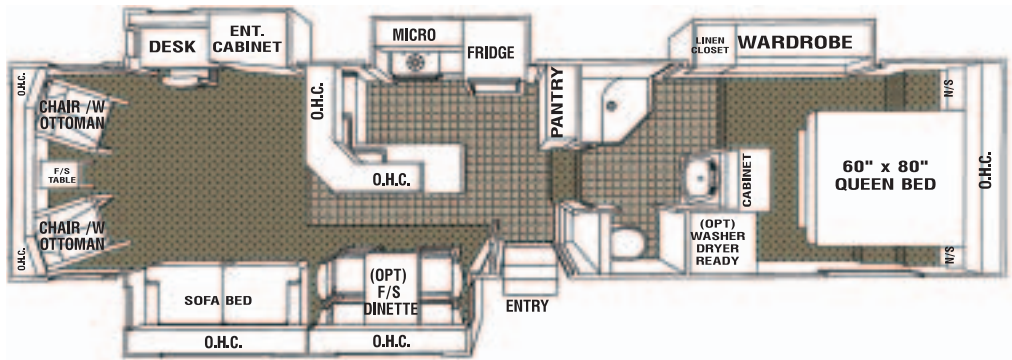
Never Lube Axles, Bedroom 12V CD/Clock Radio with remote, DVD/CD tuner 5 Speaker Surround Sound, Bi-Fold Burner Cover, Solar Panel Trickle Charger on Air Conditioner, Down Draft Cool Air Diverter, Brushed Nickel Single Lever Kitchen Tap Set, Exterior Quick Connect for BBQ, New Exterior Graphics Package, Mirrored Doors in Bedroom, Cathedral Mirrored OHC's in Living area, Attic Vents, Baseboard and Oak ceiling Molding, OHC in Bedroom, Stainless Steel Look Microwave, Bullet Style Reading Lights included on Rear OHC's in living area, bedroom, and Sofa/Dinette Slideout area.

NEW

OPTIONAL SCREENED REAR DECK PATIO
PATENT PENDING



PATIO FURNITURE NOT INCLUDED



Titanium[®]
GLENDALE, AZ

34E39QS
FIFTH WHEEL
2005 MODEL YEAR

OVERALL LENGTH	LENGTH-PIN TO BUMPER	G.V.W.R	DRY PIN WEIGHT	DRY WEIGHT	OVERALL HEIGHT	MAIN BODY WIDTH
39'-1"	33'-11"	13,933 lbs	2,321 lbs	11,146 lbs	12'-8"	96"

CONSTRUCTION

SIDEWALLS: Vacuum bonded ultra smooth **Lamilux** fiberglass siding. 1-1/2" light weight Aluminum Perimeter sidewall framing, and 1-1/2" rigid foam insulation.

ROOF: Seamless rubber roof membrane is bonded to 3/8" plywood decking. Full 5-1/2" tapered aluminum truss framing. Thick fiberglass batt insulation. Cathedral ceilings in the bedroom.

FLOOR: Laminated composite floor structure includes 3" foam insulation panel bonded between plywood panels and perimeter framing. **Darco** polyethylene moisture barrier between chassis underbelly. Seam guard under vinyl floor coverings.

CHASSIS: 11" combination Z channel/steel tube frame construction, axle shocks at all wheels, **Goodyear** ST235/80R16 "D" radial tires, venting wheel rims 12"x2" electric brakes, underslung spare tire and rim, snap release pins on powered front landing gear, power front landing gear includes a safety shut off switch, 2 stabilizer jacks, 72 degree adjustable pin box.

SLIDEOUT SPECIFICATIONS: Low maintenance powerful rack and gear 12V direct drive motor system, flush floor design, gear box release lever included for system manual override.

INTERIOR CABINET DOORS: Combination of Raised panel & cathedral style mirrored Oak cabinet doors. Easy-Glide metal roller system on all drawers.

WINDOWS: Radius corner tinted SAFETY glass.

ENTRANCE DOOR: 30" wide radius corner combination entrance door with screen and deadbolt lock, easy fold-away 24" triple rise entry steps, fold away assist handle on entry door, porch light.

APPLIANCES

REFRIGERATOR: **Dometic** 8 cubic ft double door, 2 way gas/110v.

RANGE: **Wedgewood** High Output 21" 3 burner, piezo ignitor.

FURNACE: **Atwood** 2 stage Excalibur furnace 40,000 BTU ducted in floor heat system.

MICROWAVE OVEN: **Dometic** 24" 1.3 cubic ft with turntable and built in range hood, light and exhaust fan.

AIR CONDITIONER: **Dometic** Briskair 13,500 BTU thermal insulated ducted in ceiling cool air system.

ENTERTAINMENT

STEREO: DVD/CD Tuner 5 speaker Surround Sound. (Mandatory Super Pack)

BEDROOM STEREO: Stereo 12V CD/Clock Radio with remote. (Mandatory Super Pack)

TV ANTENNA: **Winegard** RV antenna with booster.

TV HOOKUP: Coax cable hookup in bedroom and living area.

TELEPHONE JACK: Standard equipment.

SATELLITE HOOKUP: Pre-wired for quick dish connection to the RV.

AWNING

A&E 14' AWNING: Pewter/White. Awning features patented rugged steel roller tube and heavy duty torsion spring 8' extension.

PLUMBING & ELECTRICAL

Sealand Traveler Lite foot pedal flush china toilet with hand spray (Mandatory Option), Sit down corner shower and surround, single lever Brushed Nickel faucet in kitchen with sprayer, Large corner brushed nickel double sinks and sink cover, bath vanity and Brushed Nickel single lever tap, water heater by pass kit, Water Filtration System.

WATER HEATER: **Atwood XT** advance water heater system featuring Exothermal Technology 10 Gallon gas/electric (Direct Spark Ignition) that provides the equivalent to 16 gallons of hot water (Mandatory Option).

HOLDING TANKS: Holding tanks are enclosed, insulated and heated. Garden Style non-freeze drain tap on fresh water tank, sewage tank flush system.

HOLDING TANK CAPACITIES:

FRESH: 63 gallon. **GREY:** 49 gallon. **SEWAGE:** 49 gallon.

ELECTRICAL CONVERTER: **Progressive Dynamics** 9100 series converter with Charge Wizard.

HOOKUP: 50 AMP. (Detachable Power Cord)

STANDARD FEATURES

Fiberglass front and back end caps, Sofa Bed, roof rack and ladder, oak edge counter tops, exterior rinse shower, venetian blinds, 2 x 30 lb propane bottles with auto change over regulator, systems monitor panel, color coordinated ABS lower sidewall skirting, large under bed storage compartment, 60"x80" queen bed, 2 chairs with ottoman, smoke detector, decorative corner blocks on the interior slideouts, 400W Inverter.

OPTIONAL EQUIPMENT

Free standing Oak dinette with storage in place of booth style dinette, day/night shades, thermopane windows, storm windows, aluminum rims, dual exterior security lights, electric fireplace, Wall-A-away recliners, washer dryer ready, skylight in bathroom, porcelain toilet (Mandatory Option), Dual Front Power Jacks (Mandatory Option), rear deck patio, 1,000W Inverter/Converter, 27" Stereo TV.

OPTIONAL FEATURE PACKAGE UPGRADES

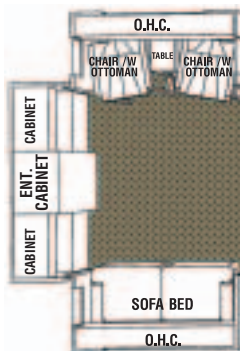
INTERIOR PACKAGE: Fluorescent ceiling lights, day/night shades, Oak galley area flooring.

COMFORT PACKAGE: 15,000 BTU air conditioner upgrade, Fantastic powered roof vent in bedroom, central vacuum, paddle fan.

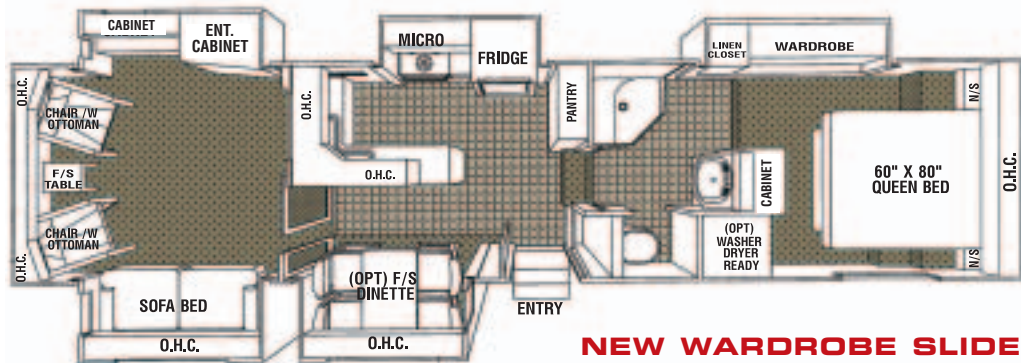
MANDATORY SUPER PACK FEATURE UPGRADES

Never Lube Axles, Bedroom 12V CD/Clock Radio with remote, DVD/Tuner 5 Speaker Surround Sound, Bi-Fold Burner Cover, Solar Panel Trickle Charger on Air Conditioner, Down Draft Cool Air Diverter, Brushed Nickel Single Lever Kitchen Tap Set, Exterior Quick Connect for BBQ, New Exterior Graphics Package, Mirrored Doors in Bedroom, Cathedral Mirrored OHC's in Living area, Attic Vents, Baseboard and Oak ceiling Molding, OHC in Bedroom, Stainless Steel Look Microwave, Bullet Style Lighting included on Rear OHC's in living area, bedroom, and Sofa/Dinette Slideout area.

REAR ENTERTAINMENT OPTION



PATIO FURNITURE NOT INCLUDED



NEW WARDROBE SLIDE

Titanium
GLENDALE, ILL.

34E39SD
FIFTH WHEEL
2005 MODEL YEAR

OVERALL LENGTH	LENGTH-PIN TO BUMPER	G.V.W.R	DRY PIN WEIGHT	DRY WEIGHT	OVERALL HEIGHT	MAIN BODY WIDTH
39'-1"	33'-11"	14,440 lbs	2,084 lbs	11,575 lbs	12'-8"	96"

CONSTRUCTION

SIDEWALLS: Vacuum bonded ultra smooth Lamilux fiberglass siding. 1-1/2" light weight Aluminum Perimeter sidewall framing, and 1-1/2" rigid foam insulation.

ROOF: Seamless rubber roof membrane is bonded to 3/8" plywood decking. Full 5-1/2" tapered aluminum truss framing. Thick fiberglass batt insulation. Cathedral ceilings in the bedroom.

FLOOR: Laminated composite floor structure includes 3" foam insulation panel bonded between plywood panels and perimeter framing. Darco polyethylene moisture barrier between chassis underbelly. Seam guard under vinyl floor coverings.

CHASSIS: 11" combination Z channel/steel tube frame construction, axle shocks at all wheels, Goodyear ST235/80R16 "D" radial tires, venting wheel rims 12"x2" electric brakes, underslung spare tire and rim, snap release pins on powered front landing gear, power front landing gear includes a safety shut off switch, 2 stabilizer jacks, 72 degree adjustable pin box.

SLIDEOUT SPECIFICATIONS: Low maintenance powerful rack and gear 12V direct drive motor system, flush floor design, gear box release lever included for system manual override.

INTERIOR CABINET DOORS: Combination of Raised panel & cathedral style mirrored Oak cabinet doors. Easy-Glide metal roller system on all drawers.

WINDOWS: Radius corner tinted SAFETY glass.

ENTRANCE DOOR: 30" wide radius corner combination entrance door with screen and deadbolt lock, easy fold-away 24" triple rise entry steps, fold away assist handle on entry door, porch light.

APPLIANCES

REFRIGERATOR: Dometic 8 cubic ft double door, 2 way gas/110v.

RANGE: Wedgewood High Output 21" 3 burner, piezo ignitor.

FURNACE: Atwood 2 stage Excalibur furnace 40,000 BTU ducted in floor heat system.

MICROWAVE OVEN: Dometic 24" 1.3 cubic ft with turntable and built in range hood, light and exhaust fan.

AIR CONDITIONER: Dometic Briskair 13,500 BTU thermal insulated ducted in ceiling cool air system.

ENTERTAINMENT

STEREO: DVD/CD Tuner 5 speaker Surround Sound. (Mandatory Super Pack)

BEDROOM STEREO: Stereo 12V CD/Clock Radio with remote. (Mandatory Super Pack)

TV ANTENNA: Winegard RV antenna with booster.

TV HOOKUP: Coax cable hookup in bedroom and living area.

TELEPHONE JACK: Standard equipment.

SATELLITE HOOKUP: Pre-wired for quick dish connection to the RV.

AWNING

A&E 14' AWNING: Pewter/White. Awning features patented rugged steel roller tube and heavy duty torsion spring 8' extension.

PLUMBING & ELECTRICAL

Sealand Traveler Lite foot pedal flush china toilet with hand spray (Mandatory Option), Sit down corner shower and surround, single lever Brushed Nickel faucet in kitchen with sprayer, Large corner brushed nickel double sinks and sink cover, large bath vanity with Brushed Nickel single lever tap, water heater by pass kit, Water Filtration System.

WATER HEATER: Atwood XT advance water heater system featuring Exothermal Technology 10 Gallon gas/electric (Direct Spark Ignition) that provides the equivalent to 16 gallons of hot water (Mandatory Option).

HOLDING TANKS: Holding tanks are enclosed, insulated and heated. Garden Style non-freeze drain tap on fresh water tank, sewage tank flush system.

HOLDING TANK CAPACITIES:

FRESH: 63 gallon. **GREY:** 49 gallon. **SEWAGE:** 49 gallon.

ELECTRICAL CONVERTER: Progressive Dynamics 9100 series converter with Charge Wizard.

HOOKUP: 50 AMP. (Detachable Power Cord)

STANDARD FEATURES

Fiberglass front and back end caps, Sofa Bed, roof rack and ladder, oak edge counter tops, exterior rinse shower, venetian blinds, 2 x 30 lb propane bottles with auto change over regulator, systems monitor panel, color coordinated ABS lower sidewall skirting, large under bed storage compartment, 60"x80" queen bed, 2 chairs with ottoman, smoke detector, sliding French door in den, decorative corner blocks on the interior slideouts, 400W Inverter.

OPTIONAL EQUIPMENT

Free standing Oak dinette with storage in place of booth style dinette, day/night shades, thermopane windows, storm windows, aluminum rims, dual exterior security lights, electric fireplace, Wall-A-way recliners, washer dryer ready, skylight in bathroom, rear entertainment layout, porcelain toilet (Mandatory Option), Dual Front Power Jacks (Mandatory Option), 1,000W Inverter/Converter, 27" Stereo TV.

OPTIONAL FEATURE PACKAGE UPGRADES

INTERIOR PACKAGE: Fluorescent ceiling lights, day/night shades, Oak galley area flooring.

COMFORT PACKAGE: 15,000 BTU air conditioner upgrade, Fantastic powered roof vent in bedroom, central vacuum, paddle fan.

MANDATORY SUPER PACK FEATURE UPGRADES

Never Lube Axles, Bedroom 12V CD/Clock Radio with remote, DVD/CD 5 Speaker Surround Sound, Bi-Fold Burner Cover, Solar Panel Trickle Charger on Air Conditioner, Down Draft Cool Air Diverter, Brushed Nickel Single Lever Kitchen Tap Set, Exterior Quick Connect for BBQ, New Exterior Graphics Package, Mirrored Doors in Bedroom, Cathedral Mirrored OHC's in Living area, Attic Vents, Baseboard and oak ceiling Molding, OHC in Bedroom, Stainless Steel Look Microwave, Bullet Style Lighting included on Rear OHC's in living area, bedroom, and Sofa/Dinette Slideout area & bedroom.

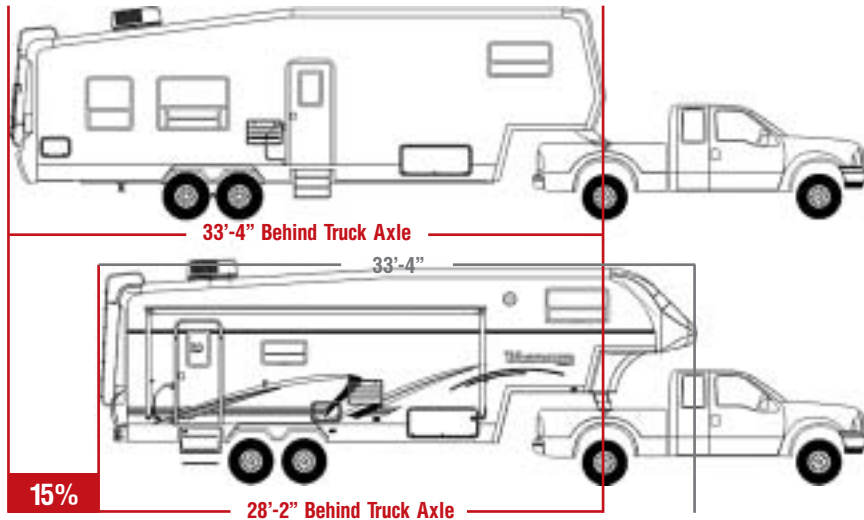
Titanium[®]

GLENDALE, AR

KEY FEATURES & STRUCTURAL ADVANTAGES

CAB OVER

Compare the two fifth wheels of EQUAL overall length below. The fifth wheel/truck combination in the top illustration shows a conventional fifth wheel pin box position and front cap styling. The Titanium fifth wheel illustration in the lower drawing shows our aggressive CAB OVER front cap design and unique pin box positioning.



The 28E33 Titanium shown in the above example is 15% shorter in tow length than the very same overall length of the **Competitive RV** shown above it.

Titanium's CAB OVER DESIGN permits more of the RV interior layout to be positioned forward of the truck rear axle. The result of this forward shift of the floor plan allows for the combined length of the fifth wheel and truck to be 15% shorter as the above illustration shows.

EASY TOWABILITY

Also Titanium has a key advantage in overall living space when comparing identical tow specifications. Example when comparing two fifth wheels in equal TOW length. Titanium's 28E33 tows 28' but enjoys 33' of living space, where competition still maintains only the 28' of living space.

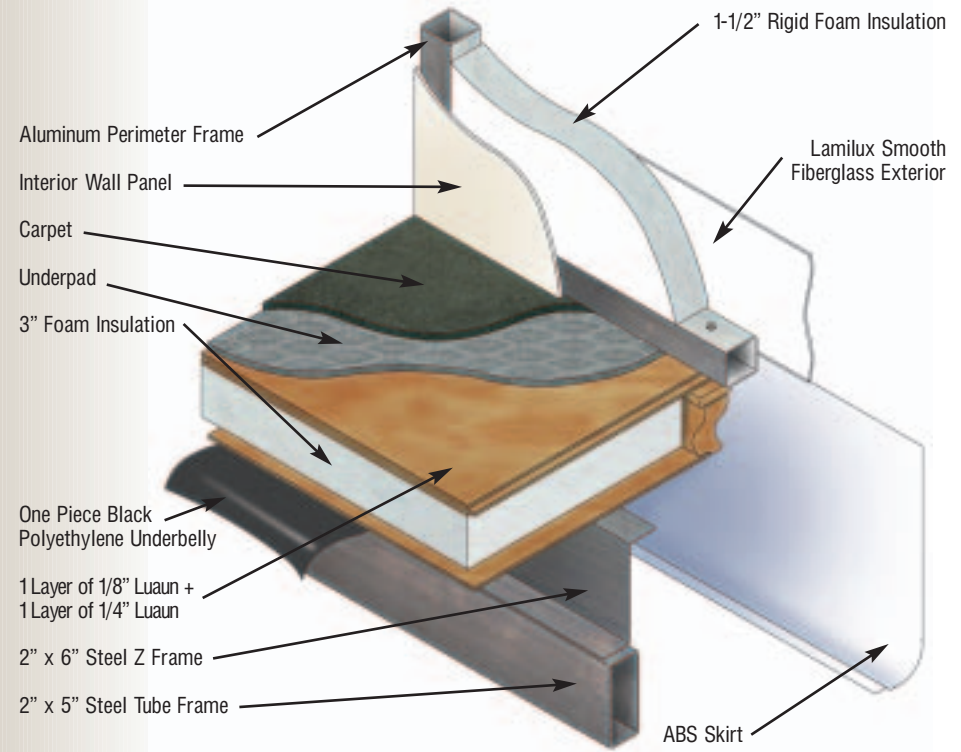
"TOW SHORTER BUT LIVE LONGER"

STRUCTURE

Titanium's laminated composite floor structure is far superior in overall strength by design. Its unique structural component is our 3" foam block insulation inserted between plywood panels and perimeter framing.

The key advantages of our 3-1/2" thick composite floor are:

- **lightweight (lightest in the market today)**
- **superior strength**
- **exceptional R-16 thermal insulation**



2005 INSULATION VALUES

Ceiling	R-12
Sidewall	R-9
Floor	R-16

"TEST TOW THIS AMAZING FIFTH WHEEL TODAY"

Titanium®

GLENDALERV



Key Titanium Features...

- Large 24" 1.3 CU FT Microwave located at a safe eye level height in every model
- Surround sound system with subwoofer and 5 speaker DVD/CD
- Holding tanks are enclosed, insulated and heated on most Titanium models
- Termination valves located inside cargo area to maintain long term use and reliability (not exposed to extreme weather elements)
- Telephone, TV, Satellite hookup on most models
- Huge under bed storage in every Titanium
- Optional sporty aluminum wheel package
- Large picture size windows to allow that great outdoor view and added natural interior lighting
- Residential quality porcelain toilet with hand spray for easy cleaning
- Extended pin box option for short, short box, quad cab configuration
- Eye catching exterior graphics package, plus an optional truck graphics kit to match your Titanium fifth wheel
- Convenient exterior Quick Connect for a BBQ

YOUR LOCAL TITANIUM DEALER:

GLENDALERV

145 Queen Street, Strathroy, Ontario N7G 3J6

www.glendalerv.com