

2009

# Four Winds

SIESTA

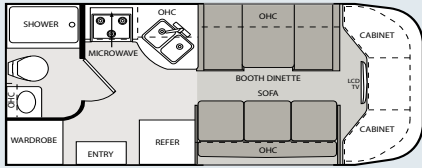
BY FOUR WINDS INTERNATIONAL

## KEY FEATURES *Fw*

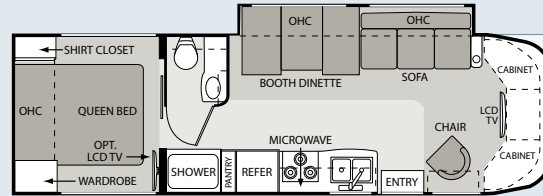
- European curved cabinetry
- Optional high-definition satellite dish
- New slide-out battery tray (not available on Sprinters)
- LCD Televisions

- New black tank flush (not available on Sprinters)
- New 24SB Sprinter floorplan with Infiniss Leather sofa with air mattress hide-a-bed
- Back-up monitor now standard (24SA and 24SB only)
- New Full-Body paint schemes

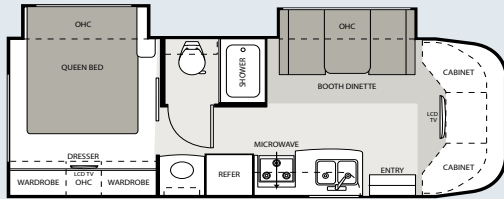
## FLOORPLANS *Fw*



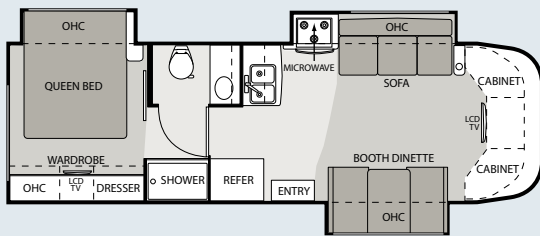
21BC



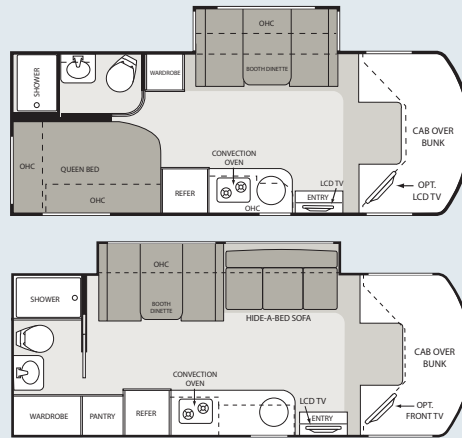
31BH



26BE

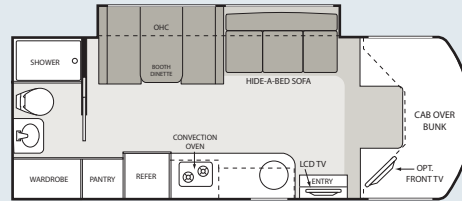


29BG



24SA

SIESTA  
SPRINTER



24SB

## SPECIFICATIONS *Fw*

| Model  | 21BC        | 26BE        | 29BG          | 31BH          | 24SA     | 24SB     |
|--|-------------|-------------|---------------|---------------|----------|----------|
| <b>Ford Chassis - Triton Engine</b>                    | 5.4L/V-8    | 6.8L/V-10   | 6.8L/V-10     | 6.8L/V-10     | N/A      | N/A      |
| Gross Vehicle (GVWR)                                   | 11,500      | 14,500      | 14,500        | 14,500        | N/A      | N/A      |
| Gross Combined (GCWR)                                  | 13,000      | 20,000      | 20,000        | 20,000        | N/A      | N/A      |
| <b>Ford Chassis - Power Stroke Diesel Engine (opt)</b> | N/A         | 6.0L/V-8    | N/A           | N/A           | N/A      | N/A      |
| Gross Vehicle (GVWR)                                   | N/A         | 14,500      | N/A           | N/A           | N/A      | N/A      |
| Gross Combined (GCWR)                                  | N/A         | 20,000      | N/A           | N/A           | N/A      | N/A      |
| <b>Chevy Chassis - Vortec Engine</b>                   | 6.0L/V-8    | 6.0L/V-8    | 6.0L/V-8      | 6.0L/V-8      | N/A      | N/A      |
| Gross Vehicle (GVWR)                                   | 12,300      | 14,050      | 14,050        | 14,050        | N/A      | N/A      |
| Gross Combined (GCWR)                                  | 16,000      | 17,600      | 17,600        | 17,600        | N/A      | N/A      |
| <b>Sprinter Chassis - Turbo Diesel Engine</b>          | N/A         | N/A         | N/A           | N/A           | 3.0L/V-6 | 3.0L/V-6 |
| Gross Vehicle (GVWR)                                   | N/A         | N/A         | N/A           | N/A           | 11,030   | 11,030   |
| Gross Combined (GCWR)                                  | N/A         | N/A         | N/A           | N/A           | 14,530   | 14,530   |
| <b>WEIGHT RATING (LBS.)</b>                            |             |             |               |               |          |          |
| Wheel Base (Ford/Chevy)                                | 138"/139"   | 181"/182"   | 213"/214"     | 223"/224"     | 170"     | 170"     |
| Exterior Length (w/out ladder) (Ford/Chevy)            | 22'8"/23'7" | 27'4"/28'3" | 30'11"/31'10" | 31'11"/32'10" | 24'6"    | 24'10"   |
| Exterior Height (w/ AC)                                | 10'7"       | 10'7"       | 10'7"         | 10'7"         | 10'10"   | 10'10"   |
| Exterior Width (without mirrors)                       | 94"         | 94"         | 94"           | 94"           | 90"      | 90"      |
| Interior Height  | 80"         | 80"         | 80"           | 80"           | 80"      | 80"      |
| Awning Size  | 11'6"       | 18'         | 20'           | 16'           | 14'6"    | 14'6"    |
| <b>MEASUREMENTS</b>                                    |             |             |               |               |          |          |
| Fuel (gallons) (Ford/Chevy)                            | 37/35       | 55/57       | 55/57         | 55/57         | 26.4     | 26.4     |
| LPG (pounds)   | 40.9        | 40.9        | 40.9          | 40.9          | 68.2     | 68.2     |
| Fresh Water (gallons)                                  | 39          | 33          | 33            | 40            | 40       | 42       |
| Waste Water (gallons)                                  | 26          | 25          | 25            | 22            | 38       | 34       |
| Gray Water (gallons)                                   | 26          | 33          | 23            | 22            | 34       | 38       |
| Water Heater (gallons)                                 | 6           | 6           | 6             | 6             | 6        | 6        |
| Furnace (BTUs)   | 25,000      | 25,000      | 25,000        | 25,000        | 25,000   | 25,000   |
| Exterior Storage Capacity (cubic feet) (Ford/Chevy)    | 4/4         | 16/12       | 24/24         | 96/96         | 56       | 40       |
| <b>CAPACITIES</b>                                      |             |             |               |               |          |          |

# 2009 FOUR WINDS SIESTA & SPRINTER STANDARD & OPTIONAL FEATURES

| BODY CONSTRUCTION/<br>EXTERIOR   |     | TC  | SP  |     |     | TC  | SP  | BEDROOM/BATHROOM |  | TC  | SP  |
|--|-----|-----|---|-----|-----|---|-----|------------------|--|-----|-----|
| Fully welded tubular steel floor system  | S   | N/A | Heated, remote exterior mirrors   | O   | S   | Infiniss leather jackknife sofa with pedestal table IPO booth dinette (not available on 21BC with Ford chassis)   | O   | N/A              | Queen-size innerspring mattress (not available on 21BC and Sprinter 24SB)                    | S   | S   |
| Fully welded tubular aluminum floor system with Tek-Modo floor decking   | N/A | S   | Spare tire kit  | O   | S   | Infiniss leather hide-a-bed sofa with air mattress and pedestal table IPO booth dinette (26BE and Sprinter 24SA only)   | O   | O                | Bedsread and pillow shams (not available on 21BC and Sprinter 24SB)                          | S   | S   |
| Curved sidewall design   | S   | N/A | 3,500-lb. trailer hitch   | N/A | S   | Fantastic fan   | O   | O                | Directional reading lights (not available on 21BC and Sprinter 24SB)                         | S   | S   |
| Fully welded tubular aluminum roof and sidewall cage construction  | S   | S   | 5,000-lb. trailer hitch   | S   | N/A | <b>GALLEY</b>   |     |                  | Power bath vent  | S   | S   |
| Vacu-Bond laminated roof, walls and floors with high-density block foam insulation                               | S   | S   | Infiniss leather driver and passenger captain's chairs (black on Sprinter)  | O   | O   | Double door refrigerator with stainless steel door inserts  | S   | S                | China bowl toilet  | S   | S   |
| Slick fiberglass exterior sidewalls  | S   | S   | Power driver's seat (Ford chassis only)   | O   | N/A | 3-burner high-output cooktop with cover   | S   | N/A              | Skylight in shower   | S   | S   |
| Exterior graphics package  | S   | S   | Back-up monitor   | O   | S   | European 2-burner high-output gas range top with glass cover  | N/A | S                | Shower with curtain and curved curtain rod (21BC only)                                       | S   | N/A |
| Exterior graphics/partial paint packages   | O   | O   | <b>INTERIOR</b>   |     |     | Stainless steel power range hood  | S   | S                | Shower with pleated shower curtain (not available on 21BC)                                   | S   | N/A |
| Full-body paint package with Gel-coat sidewalls  | O   | O   | 80" interior ceiling height   | S   | S   | Stainless steel convection microwave  | S   | S                | Shower with glass door   | O   | S   |
| Premium one-piece TPO roof—Energy Star approved  | S   | S   | Electric Euro-skylight  | N/A | S   | Non-stainless steel convection oven (Canadian units only)   | S   | N/A              | <b>SAFETY/CONVENIENCE</b>  |     |     |
| Crown roof   | S   | S   | Residential linoleum (galley, bath and entry way)   | S   | S   | Laminate countertops  | S   | S                | Entry door with deadbolt lock  | S   | S   |
| One-piece fiberglass front and rear caps   | S   | S   | Metal entry grab handle   | S   | S   | Solid surface countertop with sink covers   | O   | O                | Telephone jack   | S   | S   |
| Manual patio awning  | S   | S   | Windshield privacy curtain  | S   | S   | Flip-up countertop extension (not available on 21BC)  | S   | N/A              | System control center  | S   | S   |
| Roof ladder  | S   | S   | Cab-over bed ladder   | N/A | S   | Large stainless steel single bowl sink with goose neck faucet   | N/A | S                | Smoke, LPG, carbon monoxide detectors  | S   | S   |
| Exterior rear MEGA storage compartment (31BH only)   | S   | N/A | 13,500 BTU low-profile A/C in front   | S   | S   | Large double bowl sink  | S   | N/A              | Fire extinguisher  | S   | S   |
| Seamless roto-cast storage compartments  | S   | S   | 15,000 BTU low-profile A/C in front   | O   | N/A | Full extension drawer guides  | S   | S                | Slide-out battery tray   | S   | N/A |
| Flush mount radius luggage doors   | S   | N/A | Ceiling ducted A/C system   | S   | S   | <b>ENTERTAINMENT &amp; ACCESSORIES</b>  |     |                  | <b>ELECTRICAL &amp; PLUMBING</b>   |     |     |
| Side hinged slab luggage doors   | N/A | S   | Fluorescent ceiling lighting  | S   | S   | Front entertainment center with 32" LCD TV in cab-over  | S   | N/A              | Guardian RV Quietpac™ 40G generator (3600 watts) gas generator                               | O   | N/A |
| Slide-out room awning  | S   | S   | Directional reading lights  | S   | S   | Front entertainment center with 26" LCD TV in cab-over with home theater system and DVD player  | N/A | O                | Onan RV MicroQuiet™ 4.0 (4000 watts) gas generator   | O   | N/A |
| Automatic electric entrance step   | O   | S   | Cinnamon maple cabinetry  | S   | S   | 19" LCD TV over the door and coach stereo system with AM/FM, CD/DVD player and iPod ready   | N/A | S                | Onan 3.6 (3600 watts) LP generator (standard with Ford - Power Stroke diesel option on 26BE) | O   | S   |
| Clear acrylic, entry grab handle   | S   | S   | Honey Birdseye maple cabinetry  | O   | O   | Portable 19" LCD TV in bedroom - can be removed and mounted to exterior hook-ups (not available on 21BC and Sprinter 24SB)                                    | O   | O                | Onan 3.2 (3200 watts) Diesel generator   | N/A | O   |
| Outside Shower   | O   | S   | Cherry cabinetry  | O   | O   | Home theater system with DVD player and radio tuner (with front entertainment center option on Sprinter units only)   | O   | O                | 30 amp service with shore line power cord  | S   | S   |
| <b>AUTOMOTIVE/COCKPIT</b>  |     |     | Barrel chair (31BH only)  | S   | N/A | Outside entertainment center with AM/FM stereo and CD player (not available on 21BC)  | O   | O                | Automatic shoreline-to-generator transfer switch   | O   | S   |
| 14,500 GVWR Ford 6.0L Power Stroke diesel engine with Torqshift transmission & Onan 3.6 LP generator (26BE only) | O   | N/A | Leatherette Euro-recliner with ottoman (31BH only)  | O   | N/A | Outside entertainment center includes 26" LCD TV with AM/FM stereo, CD/DVD player with iPod ready jack and speakers (not available on 21BC and Sprinter 24SA) | O   | O                | Battery disconnect switch  | S   | S   |
| AM/FM dash radio with large buttons, CD player and weather band tuner; iPod and Sirius® satellite ready          | S   | S   | Fabric jackknife sofa (not available on 26BE)   | S   | N/A | TV antenna and booster  | S   | S                | Emergency start switch   | S   | N/A |
| Keyless entry (with convenience package option on 21BC, 26BE and 31BH only)                                      | O   | S   | Fabric/Infiniss Leather U-shape dinette IPO booth dinette (Sprinter 24SA only)  | N/A | O   | Cable TV prep   | S   | S                | Auxiliary house battery  | S   | S   |
| Power window and door locks  | S   | S   | Infiniss leather U-shape dinette IPO booth dinette (Sprinter 24SA only)   | N/A | O   | High-definition satellite   | O   | O                | Second auxiliary house battery   | O   | N/A |
| 3-Point driver and passenger seat belts  | S   | S   | Infiniss leather jackknife sofa (not available on 26BE)   | O   | N/A | HD/DSS satellite prep   | S   | S                | 6-gallon gas water heater  | S   | N/A |
| Driver and passenger air bags  | S   | S   | Fabric hide-a-bed sofa (29BG only)  | O   | N/A |   |     |                  | 6-gallon gas/electric water heater   | O   | S   |
| Upgrade dash insert with drink tray  | O   | N/A | Infiniss leather hide-a-bed sofa with air mattress (31BH-with optional euro-recliner and ottoman, 29BG and Sprinters 24SB only) | O   | S   |   |     |                  | Black tank flush system  | S   | N/A |
| Fiberglass running boards  | S   | S   | Fabric jackknife sofa with pedestal table IPO booth dinette (not available on 21BC with Ford chassis)                           | O   | N/A |   |     |                  | Water heater bypass system   | S   | S   |
| Stainless steel wheel liners   | S   | S   |   |     |     |   |     |                  | Holding tanks with heat pads   | O   | O   |
| Deluxe exterior mirrors  | S   | N/A |   |     |     |   |     |                  | <b>TC=FOUR WINDS SIESTA SP=SIESTA SPRINTER</b>   |     |     |



**VEHICLE LOADING:** Every effort has been made to provide the greatest number of options for the recreation vehicle owner. Along with these choices comes the responsibility to manage the loads that are imposed by the choices so that they remain within the manufacturer's specified chassis weight limits. Do not overload the recreation vehicle.

**IMPORTANT:** Towing capacity may vary by chassis model, floorplan, options and loading of the vehicle. This may result in a towing capacity which is less than the maximum capacity of the hitch. Do not exceed the vehicle's Gross

Combined Weight Rating (GCWR), or the hitch rating. A separate functioning brake system is required for any towed vehicle or trailer weighing more than 1,000 lbs. (450 KG) when fully loaded. Liquid capacities and weights are approximations only.

**WARNING:** This information is intended as a guide only. Weights of individual vehicles may vary. Consult your owner's manual and weight sticker affixed to each vehicle for complete loading, weighing, and towing instructions. Actual filled LP capacity is 80% of listing due to safety shut-off required on tank.

**WARRANTY:** This vehicle is provided with a one-year, 15,000-mile limited warranty and a three-year, 45,000-mile limited structural warranty. Chassis, component part and appliance manufacturers issue limited warranties covering those portions of the vehicle not covered by the limited warranties issued by Four Winds International. To learn what portions of the vehicle are excluded from coverage under the limited warranties issued by Four Winds International, please contact your selling dealership or Four Winds International directly, or review the warranty packet inside the vehicle.

Product information, specifications, and photography in this brochure were as accurate as possible at time of printing. Photographs may contain some features that are optional on your vehicle. Since we continually strive to improve our products, actual products may differ. The manufacturer reserves the right, at any time, to make changes in product design, materials, component specifications and pricing, without notice. All capacities are approximate and dimensions are nominal. Some features or options may be different or unavailable in Canada.