

SHAMROCK

Shamrock

EXPANDABLE LIGHT-WEIGHT TRAILERS



A FLAGSTAFF PRODUCT PRESENTED BY FOREST RIVER

SHAMROCK

MODEL 227 LIVING AREA

SHAMROCK EXPANDABLES





SHAMROCK EXPANDABLES

FEATURES

- A. Directional Reading Lights (Std.)
- B. Outside Speaker (Opt.)
- C. Hardwood Doors & Drawers
- D. RVQ Grill (Opt.)
- E. Bunk Cables (Std.) (No Poles Needed)
- F. Exterior Shower (Std.)
- G. Water Filter (Std. Opt.)
- H. Heated Innerspring Mattresses (Std. Opt.)
- I. Bunk Light Fan (Std.)



A



B



C



D



E



F



G



H



I

SHAMROCK

MODEL 21SS

SHAMROCK SUPER SLIDE



Shamrock continues to provide industry-first achievements as a hallmark to their dedication to serve you With the best products. This 21' expandable hosts the only flush-floor super slide in the industry, creating the most living space in it's class. The cream interior compliments the flooring and stainless steel appliances bringing residential style to the road. Clearly, Shamrock is the top choice for expandable trailers.



FEATURES

- A. Alloy Rims (Opt.)
- B. Industrial Bunk Latch and Lock (Std.)
- C. Radius Roof
- D. Power Awning With Adjustable Rain Dump
- E. Expandable sleeping
- F. Fantastic Fan (Std. Opt)
- G. Towel Bar (Std.)



A



B



C



D



E



F



G

SHAMROCK STANDARDS & OPTIONS

EXTERIOR STANDARD FEATURES

- Radius Roof
- Industrial Lockable Bed Latches
- Innerspring Mattresses
- Easy Lube Axles
- Foot Flush Toilets
- Bed Cable System (No Poles)
- Aluminum Frame (Floor, Sidewall, & Roof)
- Vacuum Bonded Filon Fiberglass Sidewalls
- Alpha One-Piece Vinyl Roof
- Radius Corner Windows and Doors
- Torsion Axle w/ Rubber-Ryde Suspension
- Outside Shower
- Two-20lb Gas Bottles
- Gas/Electric Refrigerator
- Electric Motor for Slide Out
- Decorative Frame Skirting
- Aluminum Bed and Dinette Frame
- Insulation Factors R-7 Side Wall, R-12 Floors and R-14 Ceiling
- 14" Tires With Double Step
- Molded Bottle Covers
- Front and Rear Stabilizer Jacks

INTERIOR STANDARD FEATURES

- Raised Panel Solid Wood Cabinet Doors
- Tub Surround

- Screwed and Glued Cabinetry
- Decorative Valances w/ Mini Blinds
- Three Burner Gas Range
- Six Gallon Gas Water Heater
- Water Heater By-Pass
- Monitor Panel
- Phone Jack With Cable and Satellite Hook-up
- Bathroom Skylight
- 55 Amp Converter
- 50/50 Jalousie Windows (Selected Areas)
- Two Bunk Fan/Light Combination With Each Tip Out
- Large Dinette Picture Window
- Residential One-Piece Double Sink Cover/Cutting Board
- Indoor/Outdoor Table
- Metal Drawer Guides
- Directional Reading Lights on Sofa Slides
- Deluxe Digital AM/FM Stereo w/ CD/DVD Player & Remote
- Foot Flush Toilets

POPULAR OPTIONS

- Create-A-Breeze Three Speed Fantastic Vent
- Heated Mattresses
- Water-Pur Filtration
- Conventional Oven
- Microwave
- ½ Sliding Storage Tray (Where Available)
- TV Antenna w/ Cable & Satellite Hook Up

- Spare Tire, Carrier, & Cover
- Awning
- Power Awning With Adjustable Rain Dump (N/A 17, 19, 21RS, 23RS)
- 13.5k BTU Ducted Air (Except 17, 183, 19)
- 13.5k BTU Roof A/C (17, 183, 19 Only)
- Outside Gas Grill & Work Table
- Electronically Controlled Heated Holding Tanks
- Safety Glass
- CSA Coding
- Option 3 Interior Color Choices (Blue, Green, Cinnamon)
- Stainless Steel Appliances
- Cream Interior w/ Stainless Steel Appliances
- Aluminum Wheels
- Double Door Refrigerator (17, 183, 19)
- Outside Speaker
- Power Front Jack
- Storm Windows
- Raised Refrigerator Panel
- Cream Raised Refrigerator Panel
- Slide Topper
- 15" LCD TV
- DSI Gas/Electric Hot Water Heater
- Chrome Look Wheel Covers
- Extra Create-a-Breeze Fan (N/A 17, 19, 232)
- Tire Pressure Monitoring Sysytem
- Carbon Monoxide Detector

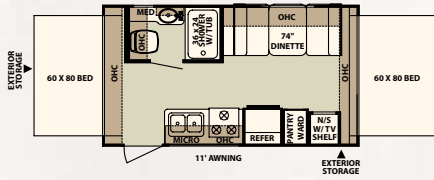
MODEL	17	183	183RD	19	21SS	232	232L	233	233S	23B	23SS	21RS	23RS
GVWR	3852	4373	6573	4341	5143	6286	6410	5404	5864	5082	5879	4830	5618
Base/Dry Unit Weight	2789	3102	4002	3070	3872	4215	4484	3533	3993	3997	4008	3559	3747
Base/Dry Hitch Weight	352	238	906	239	645	286	410	433	565	682	509	594	625
Base/Dry Axle Weight	2437	2864	3096	2831	3227	3929	4074	3100	3428	3315	3499	2965	3122
Cargo Capacity	1025	1233	2533	1233	1233	2033	1888	1833	1833	1047	1833	1233	1833
Length	18' 11"	20' 3"	28' 9"	20' 3"	21' 4"	23' 4"	33' 4"	23' 9"	23' 9"	23' 4"	24' 6"	21' 8"	23' 9"
Trailer Length (Open)	22' 11"	24' 9"	29' 3"	24' 9"	25' 6"	32' 1"	36' 10"	27' 9"	27' 9"	27' 4"	28' 6"	25' 2"	27' 3"
Width	96"	96"	96"	96"	96"	96"	96"	96"	96"	96"	96"	96"	96"
Height w/o A/C	112"	112"	112"	112"	112"	112"	112"	112"	112"	112"	112"	112"	112"
Interior Height	78"	78"	78"	78"	78"	78"	78"	78"	78"	78"	78"	78"	78"

Model number of any particular unit does not necessarily reflect the overall length of the unit itself. Dry weight are estimates.

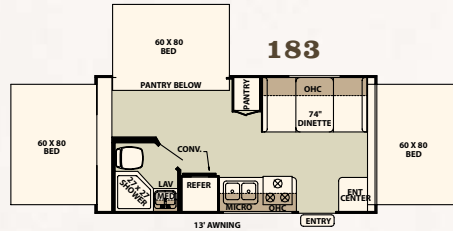


SHAMROCK EXPANDABLE FLOORPLANS

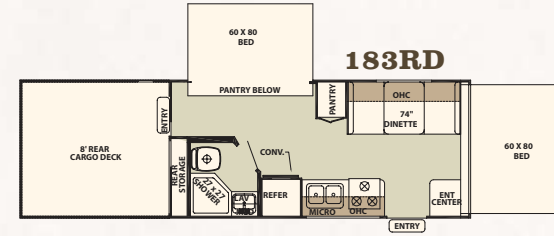
17



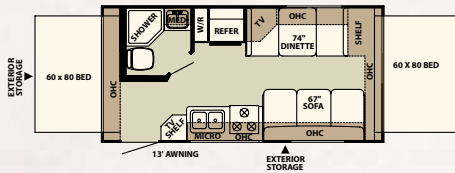
183



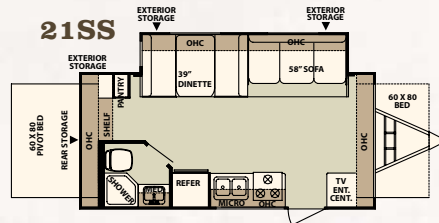
183RD



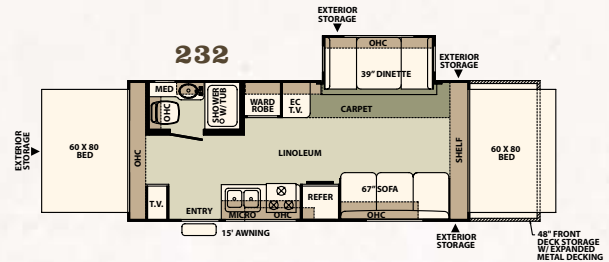
19



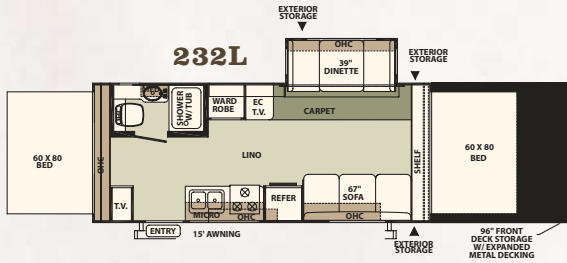
21SS



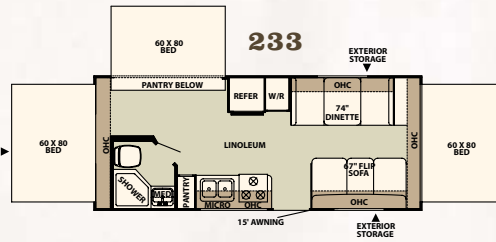
232



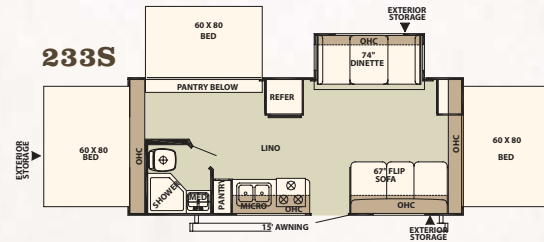
232L



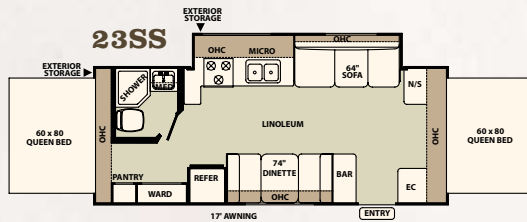
233



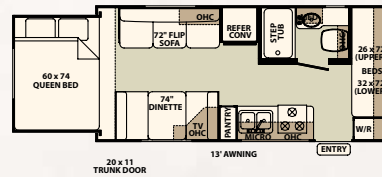
233S



23SS



21RS - HARD SLIDE

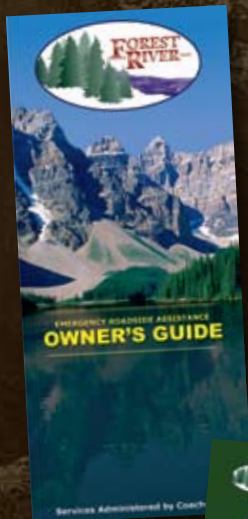


23RS - HARD SLIDE



PEACE OF MIND.

Forest River has yet another exclusive feature to offer: One year of free roadside assistance will be given to every 2009 Flagstaff customer. This is just one more way to say "Thank you" and to ensure an enjoyable traveling experience.



FOREST RIVER'S HALLMARK OF EXCELLENCE:
PRE-DELIVERY INSPECTION FACILITIES



**THAT'S 20,000 SQUARE FEET OF QUALITY ASSURANCE.
THE BARE ESSENTIALS FOR A PREMIUM PRODUCT.**

Brought online in 2005, Forest River is proud of its state-of-the-art test facility. This beautiful building blends many of the old tried and true methods of testing our diverse types of RVs With new innovative ways of solving quality issues. Being centrally located to most Forest River manufacturing facilities, this 20,000 square foot PDI (Pre-delivery Inspection) test building gives immediate daily feedback to individual managers. This assures the production facilities that nothing has slipped by the plant's quality assurance personnel and the units are "green" and ready to ship.

YOUR FLAGSTAFF DEALER

For details on Flagstaff's complete warranty program, see your Flagstaff dealer. When it comes to backing products With the same quality and commitment it has when it begins the manufacturing process, the only name you have to remember when you're looking for a recreational vehicle is Flagstaff. Flagstaff offers the following additional limited warranties to the original purchasers. Consult written warranty for details.

1. Twelve-year vinyl roof warranty,
2. Two-year fiberglass warranty,
3. Five-year axle warranty,
4. Five-year tent warranty,
5. One-year bumper to bumper warranty,
6. Available second-year warranty



All specifications contained herein are based on the latest product information at time of printing. Forest River reserves the right to make changes in colors, materials, equipment and specifications at any time Without notice and assumes no responsibility for any errors in this brochure.