

Wildwood LODGE and XL Series



Wildwood

Lodge AND XL SERIES

Offering All of the Comfort and Convenience of Home at your Favorite Get Away Destination.



Wildwood and Forest River are proud to exclusively offer these quality brands:

L A Z B O Y





Panoramic windows available on the Wildwood 403FB (Wine interior)
The 403FB Flat Screen TV can be transferred to three different locations.

The 403FB bedroom comes with entertainment center and rear bay window (Shown with Wine interior)

Don't miss a second of the action, whether your inside or out, Wildwood Lodge and XL models provide plenty of entertainment opportunities. (Shown the exterior of the 392QBBS)



LODGE STANDARDS



Whole Unit Water Filter



Wildwood's 60" Patio Door



Fireplaces are standard equipment on 3 Models



Porcelain Foot Flush Toilet

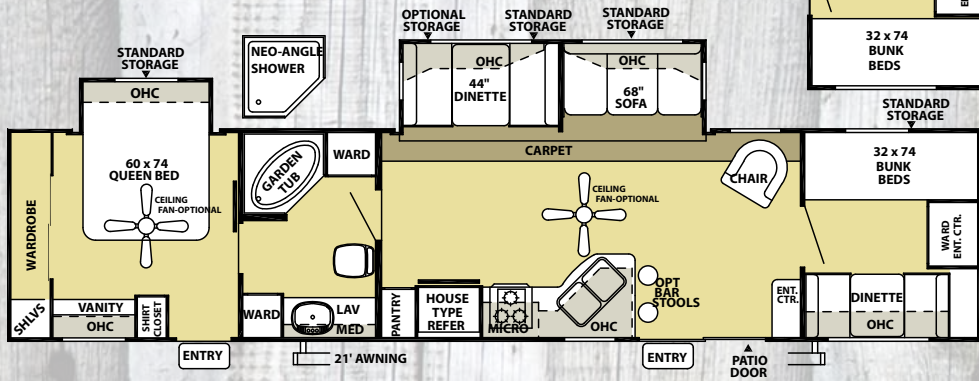


Flex-Frame Bed Frame

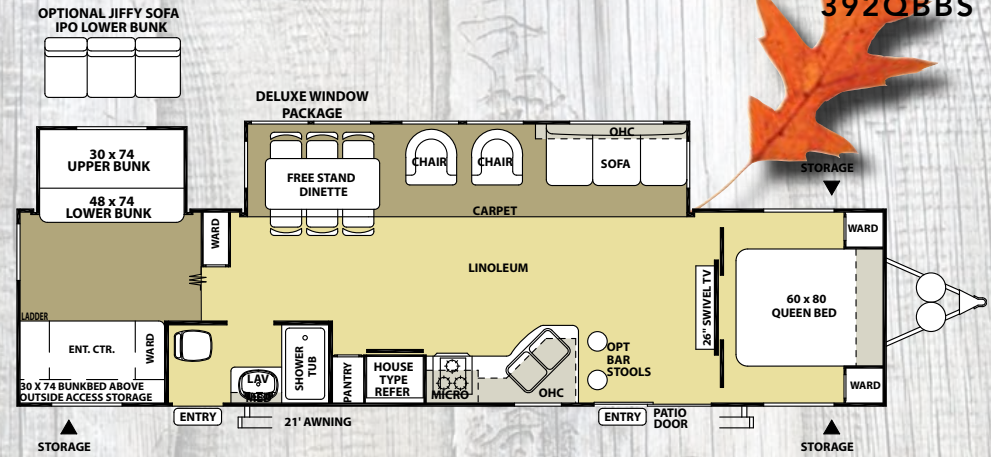


10 Blade 12" Fantastic Fan

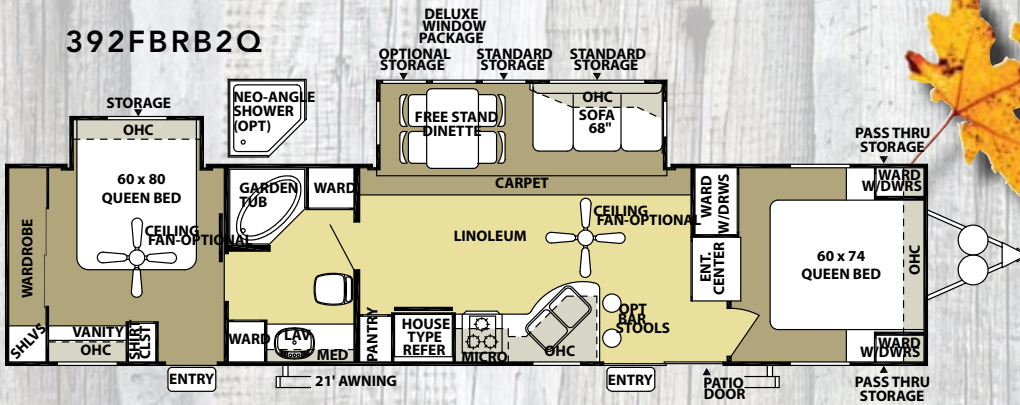
392FBRB



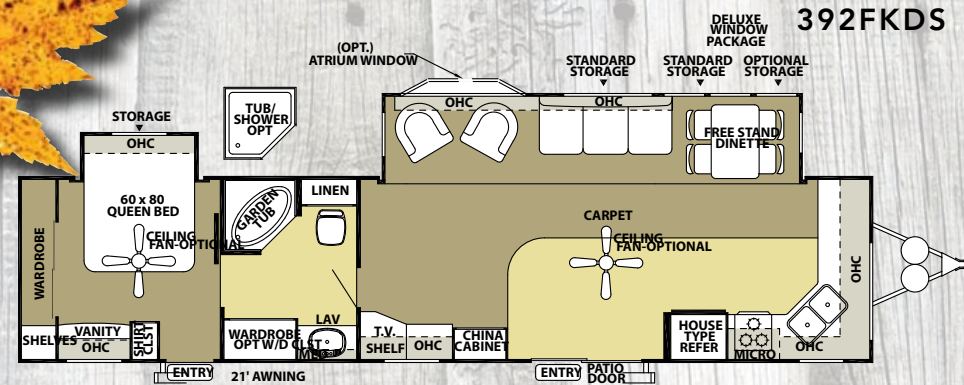
392QBBS



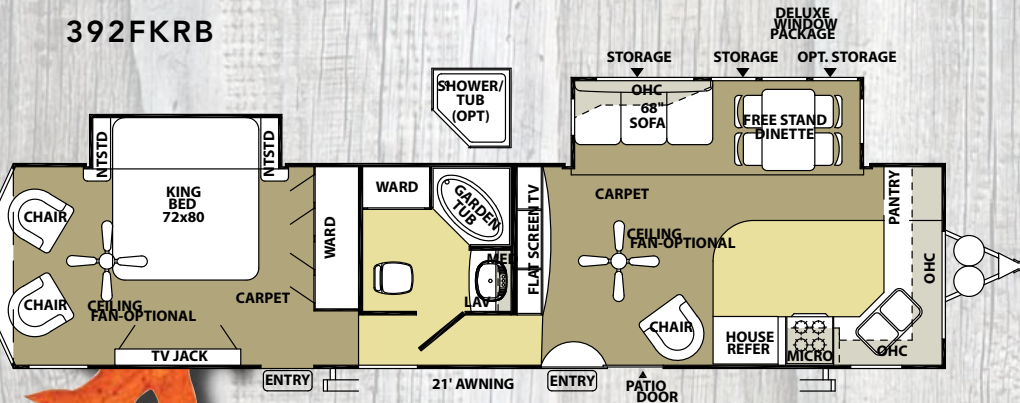
392FBRB2Q



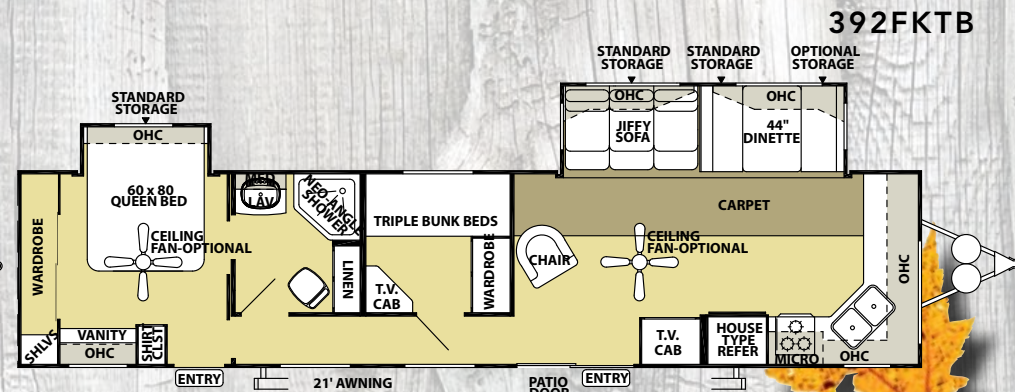
392FKDS



392FKRB

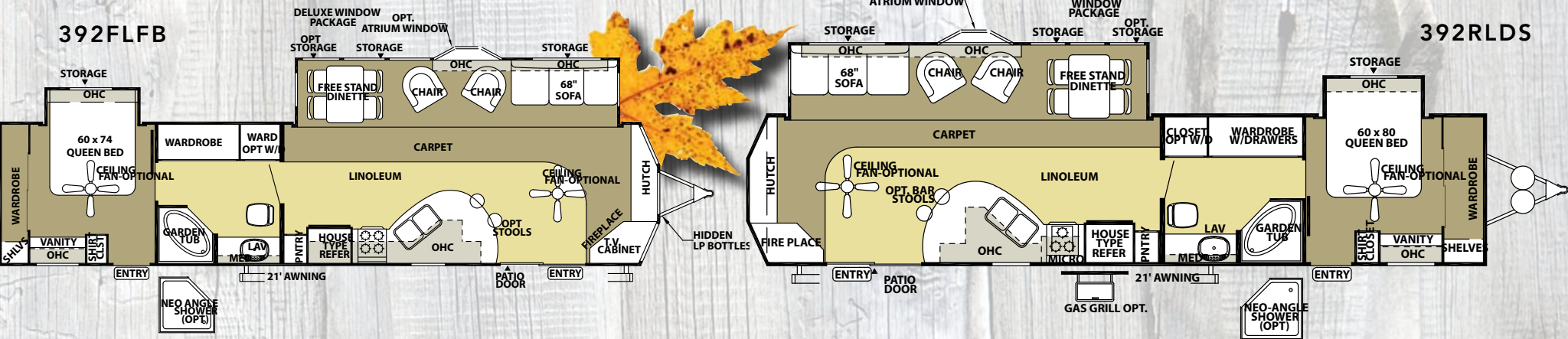


392FKTB



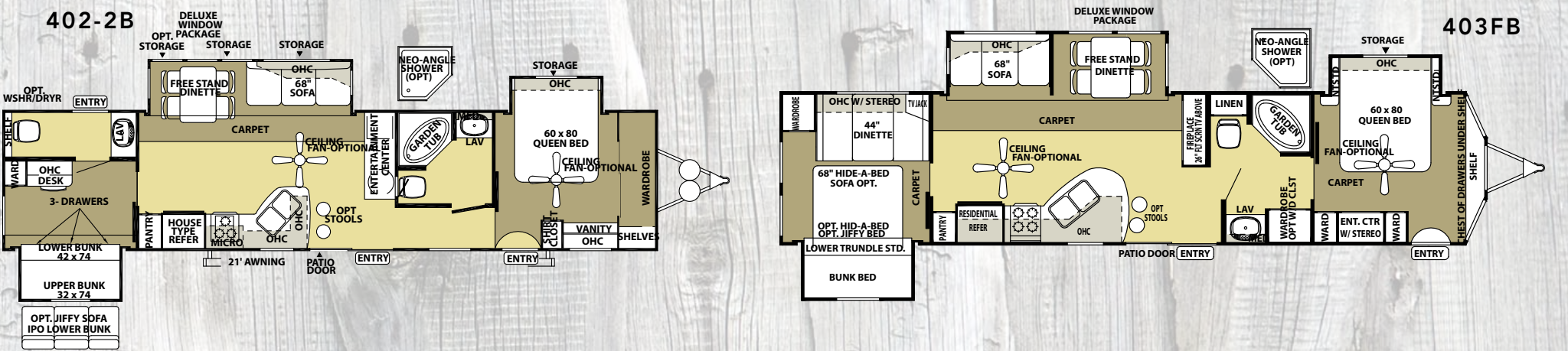
392FLFB

392RLDS



402-2B

403FB



WILDWOOD LODGE SPECIFICATIONS

	392FBRB	392QBBS	392FBRB2Q	392FKDS	392FKRB	392FKTB	392FLFB	392RLDS	402 2B	403FB
Hitch Weight (lb)	1000	TBA	1000	1550	1390	1510	1500	1150	1300	1385
Axle Weight	8600	TBA	8600	8520	8670	8250	8700	8980	9130	9685
Dry Ship Weight	9600	TBA	9600	10070	10060	9760	10200	10130	10430	11070
GVWR	11400	TBA	11400	11950	11550	11670	11660	11310	13300	13385
CCC (Cargo Capacity)	1740	TBA	1740	1820	1430	1850	1400	1120	2810	2255
Ext Length	42'	TBA	42'	42'	42'5"	42'	42'	42'	42'	42'
Ext Height	11' 9"	11' 9"	11' 9"	11' 9"	11' 9"	11' 9"	11' 9"	11' 9"	11' 9"	11' 9"
Int Height	84"	84"	84"	84"	84"	84"	84"	84"	84"	84"
Fresh Water Cap (gal)	42	42	42	42	42	42	42	42	42	42
Black Water Cap (gal)	35	35	35	35	35	35	35	35	35	35
Grey Water Cap (gal)	43	43	43	43	43	43	43	43	43	43
Tire Size (in)	15"	15"	15"	15"	15"	15"	15"	15"	16"	15"
Awning Size (ft)	21'	21'	21'	21'	21'	21'	21'	21'	21'	21'





The Residential refrigerator (all XL and Lodge Models) and free standing range (Lodge models), give you comfort and convenience in your home away from home.



Model 392FLFB shown-TV not Standard Equipment

Relax in comfort in the spacious living areas of the Wildwood. Our 102" wide body provides plenty of room.



Optional Exterior Speakers Mounted Under Awning



Optional 12 Volt Ceiling Paddle Fan(s) with Wall Switch



Optional LA-Z-Boy Package (Sleeper Sofa and Chairs). La-Z-Boy has teamed up Exclusively with Forest River to take Legendary Comfort On the Road.



Optional Atrium Window available on select models.

WILDWOOD LODGE STANDARDS & OPTIONS

COMFORT AND CONVENIENCE

- 102" Exterior Width for Increased Living Space
- 84" Interior Height
- Black Framed Tinted Glass Windows
- WaterPur™ Whole House Water Filtration System
- Water Heater By-Pass
- 20-gallon Electric Water Heater
- Ducted Dometic® 15,000 BTU Central Air Conditioner with Quick Cool Feature
- In-Floor Ducted Heat with 40K BTU Furnace
- Stain Resistant Carpet with Padding
- Armstrong® ToughGuard™ Plank Wood Linoleum Flooring
- Flush-Floor Hydraulic Slide Rooms with Manual Override (19' Slide outs)
- Systems Monitor Panel
- 12 Volt Lighting
- 50 amp Electrical Service and 65 amp 12 Volt Converter
- Solid Hardwood Drawer Fronts with Wood Sides
- Mortise and Tenon Hardwood Cabinet Doors
- 26-inch LCD/HD T.V. (Per Floorplan)



KITCHEN

- Raised Panel Cabinet Upper Doors
- 20" Freestanding 4 Burner Gas Range with Oven (Black)
- 18 cu. Ft. Residential Electric Refrigerator with Icemaker (Black)
- Microwave with Carousel and Range Hood (Black)
- Bedspreads and Bunkspreads
- Acrylic 60/40 Residential Style Kitchen Sink
- High-Rise Residential Style Faucet
- Sink Cover (1)
- Pantry (per floorplan)
- "Bull-nose" countertop edging

LIVING ROOM

- Swivel Rocker Chair(s) (per floorplan)
- AM/FM/CD/Stereo System w/remote control
- Forest River Sound System with 100 Watt Subwoofer for True Surround Sound
- Surround Sound TV Hook-up
- TV Antenna with Booster
- Cable and Satellite Door Side Hookup
- 60" Glass Sliding Patio Door with Vertical Blinds
- Extra Large Panoramic Window at Dinette (per floorplan)
- Full Length Angled Overhead Cabinets with Etched Glass in Slide-outs (most models)
- Large External Luggage Doors behind Standard Flip-sofa and Booth Dinette
- Extra Large 44" Pedestal Dinette for More Comfortable Dining and Sleeping
- Coordinating Wallpaper Border

BEDROOM

- Serta® Mattress standard all King and Queen Beds
- Comfort Flex Steel Bed Frame with Lift System
- Bedspreads and Bunkspreads
- Bedroom Roof Vent
- Plywood Bunk Platforms
- TV Shelf
- Cable TV Hook-up
- Stain Resistant Carpet w/ Padding
- Solid Privacy Doors
- Full Length Mirrored Wardrobe Closet with 51 cu ft. Storage (per floorplan)

BATHROOM

- Built-in Wood Medicine Cabinet and Mirror
- Ceiling Light with Convenient Wall Switch
- China Foot Flush Toilet(s)
- Glass Shower Door (Neo-Angled Showers)
- ABS Tub and Shower with One-piece Surround with Curtain
- Oversized Garden Tub (per floorplan)
- 12" 10-blade Fantastic Bath Fan™

EXTERIOR

- Smooth Fiberglass Radius Baggage Doors with Thumb Pulls and Holdbacks
- A & E Side Awning-One Piece Vinyl
- Diamond Plate Rock Guard (n/a 392FLFB, 403FB)
- One-piece Rock Guard Awning (Some Front Window models)
- 15" Radial Tires
- Entry Assist Handle
- 30 lb. Double LP Tanks with Automatic Change Over and EZ Access Cover
- EZ Access LP Tank Cover
- Colored Dump Valve Handles
- City Water Fill with Brass Valve

CONSTRUCTION

- 12" Forged I-beam Frame
- Cambered Chassis
- Seamless Holding Tanks
- Color Coded Water Lines
- 2" x 3" Floor Joists 12" on Center
- 5/8" 5-ply Tongue and Groove Plywood Floor Decking
- 2" Wall Studs Maximum 16" on Center
- Steel Framed 6' Patio Doors
- 5" Bowed Truss Roof Rafters
- 3/8" Walk-on Roof Decking
- Seamless One-piece Rubber Roof w/ 12 Year Warranty
- Double Wipe Slide-out Seal
- R-7 Insulation Throughout (Floors, Walls, Ceilings, and Slide-outs)
- Galvanized Steel Wheelwells with Fiberglass Insulation (except slide-outs)

SECURITY AND SAFETY

- Smoke Detector
- Fire Extinguisher
- Carbon Monoxide Detector
- LP Gas Leak Detector
- Flush Door Latch with Integral Dead Bolt Lock
- Main Entry Step Light with Interior Switch
- Amber Porch Light with Interior Switch
- Main Entry Doorside Scare Light
- Screen Door with Safety Latch
- GFI Receptacles and Covered Patio Outlet
- Welded Heavy Duty Safety Chains
- Hitch Light
- E-Z Open Entry Steps
- Lockable Fiberglass Radius Baggage Doors

POPULAR OPTIONS

- Autumn Cherry or Fulton Light Cherry Cabinets
- Safety Glass Tinted Windows
- Gelcoat Fiberglass Exterior w/ 16" Tires and 6,000 lb Axles
- Skylight over Tub
- Garden Tub Glass Door (per floorplan)
- Garden Shower with Glass Door (per floorplan)
- Extra Large 8 cu-ft Double Door RV Refrigerator (IPO House Type)
- La-Z-Boy® Living Room Furniture (A Forest River Exclusive*)
- Double Sofa Air Hide-A-Bed
- Queen Size Hide-A-Bed with Flip-up Footrests (Some Models)
- Free Standing Dinette w/4 chairs and Flip Leaf
- Second Drawer under Dinette (n/a with Free Standing Dinette)
- Atrium Window Foldout (per Model)
- Phone Jack
- DVD Stereo Surround Sound System with Upgraded Speakers
- Bar Stools (per floorplan)
- Stabilizer Jacks
- Detachable Hitch
- Outside Shower
- 10-gallon Gas/Electric DSI Water Heater (IPO 20 gal Electric)
- Slide Room Awning(s)
- Spare Tire, Carrier and Cover
- Exterior LP Gas Grill
- Ceiling Paddle Fan(s) w/ Wall Switch
- Double Insulation (Floor and Roof)
- Cloth Nite Shades (IPO Mini Blinds)
- Thermostatically Controlled Heated Holding Tanks
- iPod Docking Station



L A Z B O Y®





362FKDS Living Area shown with Autumn Cherry Interior Wood

A 68" ceiling in the slide out, with 84" ceiling height in the main body, combined with a 102" wide main body, provides all the roominess you would expect in a WILDWOOD X



L or Lodge Model.



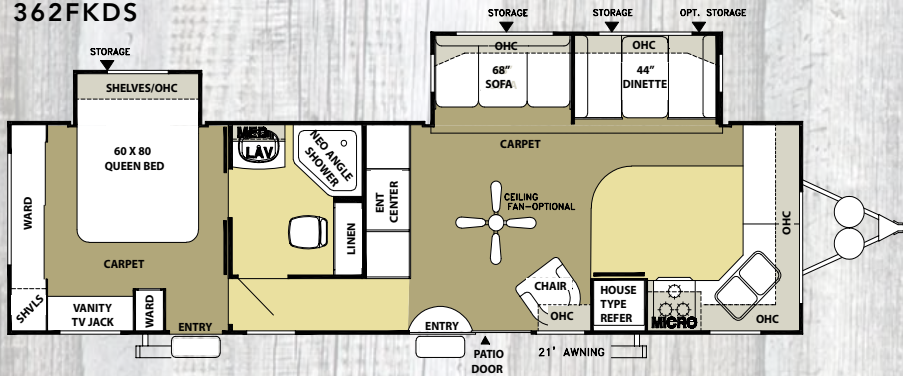
362FKDS Kitchen Area shown with Autumn Cherry Interior Wood

The spacious kitchen area of the Lodge and XL models provide you with plenty of counter and storage space. Perfect for entertaining!

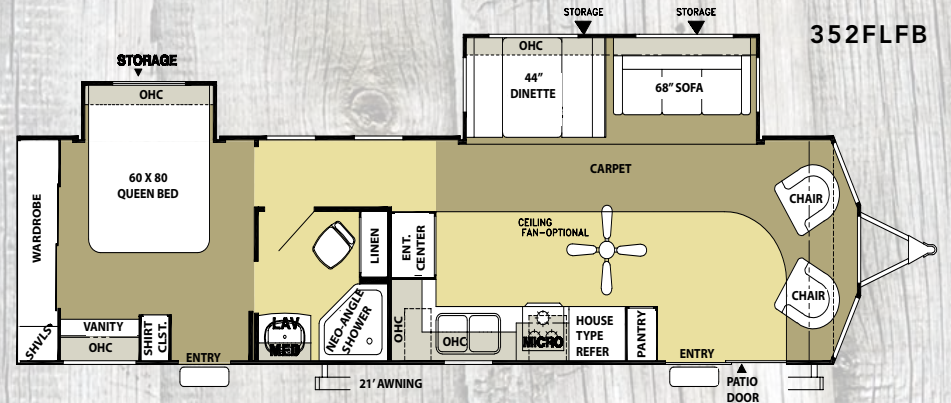
WILDWOOD XL's are our best value alternative to the WILDWOOD Lodge Models. XL's have MANY features not offered by ANY of our competitors. Truly a great Destination RV! (Shown w/optional Fiberglass Exterior)



WILDWOOD XL FLOORPLANS
362FKDS



352FLFB



WILDWOOD XL SPECIFICATIONS

	352FLFB	362FKDS
Hitch Weight (lb)	1280	1000
Axle Weight	7700	7720
Dry Ship Weight	8980	8720
GWR	11440	11160
CCC (Cargo Capacity)	2400	2381
Ext Length	38' 3"	36' 4"
Ext Height	11' 9"	11' 9"
Int Height	84"	84"
Fresh Water Cap (gal)	42	42
Black Water Cap (gal)	32	43
Grey Water Cap (gal)	43	64
Tire Size (in)	15"	15"
Awning Size (ft)	21'	21'



Standard Porcelain Foot Flush Toilet



Standard Whole Unit Water Filter



WILDWOOD XL STANDARDS & OPTIONS

COMFORT AND CONVENIENCE

- **102" Exterior Width for Increased Living Space**
- **84" Interior Height**
- Black Framed Tinted Glass Windows
- WaterPur™ Whole House Water Filtration System
- Water Heater By-Pass
- 6-gallon Gas/Electric DSI Water Heater
- Double Entry Doors (most floorplans)
- Pass Thru Storage (per floorplan)
- Dometic® 13,500 BTU Central Air Conditioner with Quick Cool Feature
- In-Floor Ducted Heat with 30K BTU Furnace
- **Stain Resistant Carpet with Padding**
- Armstrong® ToughGuard™ Plank Wood Flooring (Linoleum)
- Flush-Floor Slide Rooms
- Systems Monitor Panel
- Jalousie Clamp Radius Windows (Bedroom, Living Room, and Kitchen)
- Solid Oak Drawer Fronts with Wood Sides
- Mortise and Tenon Cabinet Doors

KITCHEN

- Raised Panel Cabinet Upper Doors
- 12V Power Range Hood with Light
- Three-Burner High Output Range with 16" Oven (Black)
- **18.5 Cubic Foot 110 Volt Refrigerator w/ Ice Maker (Black)**
- Microwave with Carousel (Black)
- Acrylic 60/40 Residential Style Kitchen Sink
- High-Rise Residential Style Faucet
- Sink Cover
- Built in Knife Holder
- Flip Down Silverware Storage (per floorplan)
- **Pantry**

LIVING ROOM

- Swivel Rocker Chair(s) (per floorplan)
- AM/FM/CD Stereo System w/ remote control
- **Forest River Sound System with 100 Watt Subwoofer for True Surround Sound**
- Surround Sound TV Hook-up
- TV Antenna with Booster
- Cable and Satellite Ready
- **60" Glass Sliding Patio Door w/ Vertical Blinds**
- Extra Large Picture Window at Dinette
- Full Length Angled Overhead Cabinets with Etched Glass in Slide-outs
- Large External Luggage Doors behind Sofa and Dinette
- Extra Large 44" Pedestal Dinette for More Comfortable Dining and Sleeping
- Wood Trim Slide-out Fascia with Fabric Insert

BEDROOM

- **Serta® Mattress standard all King and Queen Beds**
- Fitted Bedspreads and Bunkspreads
- Bedroom Roof Vent
- Plywood Bunk Platforms
- Lift-up Beds with Gas Struts (per floorplan)
- TV Shelf or Flip Table and Outlet in Bedroom
- Cable TV Hook-up
- Stain Resistant Carpet w/ Padding
- Privacy Doors or Sliding Curtain (per floorplan)

BATHROOM

- Built-in Wood Medicine Cabinet and Mirror
- Ceiling Light with Convenient Wall Switch
- China Foot Flush Toilet(s)
- Glass Shower Door (Neo-Angled Showers)
- ABS Tub and Shower with One-piece Surround
- Oversized Garden Tub (per floorplan)
- **12" 10-blade Fantastic Bath Fan™**

EXTERIOR

- Smooth Fiberglass Radius Baggage Doors with Thumb Pulls and Holdbacks
- **A & E Side Awning One Piece Vinyl**
- Diamond Plate Rock Guard (Travel Trailers)
- One-piece Rock Guard Awning (362FKDS)
- 15" Radial Tires
- Entry Assist Handle
- 30 lb. Double LP Tanks with Automatic Change Over and EZ Access
- LP Tank Cover (Travel Trailers)
- City Water Fill with Valve

CONSTRUCTION

- 10" Extruded I-beam Frame
- Cambered Chasis
- Fresh Water Tank
- **2" x 3" Floor Joists 12" on Center**
- **5/8" 5-ply Tongue and Groove Plywood Floor Decking**
- 2" Wall Studs Maximum 16" on Center
- Steel Framed 6' Entrance Doors
- 5" Bowed Truss Roof Rafters
- 3/8" Walk-on Roof Decking
- Seamless One-piece Rubber Roof w/12 Year Warranty
- R-7 Insulation

SECURITY AND SAFETY

- Smoke Detector
- Fire Extinguisher
- Carbon Monoxide Detector
- LP Gas Leak Detector
- Main Entry Step Light with Interior Switch
- Amber Porch Light with Interior Switch

- Main Entry Doorside Scare Light
- Screen Door with Safety Latch
- GFI Receptacles and Covered Patio Outlet
- Welded Heavy Duty Safety Chains (Travel Trailers)
- Hitch Light (Travel Trailers)
- E-Z Open Entry Steps
- Lockable Fiberglass Radius Baggage Doors

POPULAR OPTIONS

- **Autumn Cherry or Fulton Cherry Cabinets**
- Safety Glass Black Framed Tinted Windows
- Fiberglass Exterior
- Fiberglass Front Cap (5th Wheel Models)
- 10-gallon Gas/Electric DSI Water Heater
- Skylight over Tub
- Bi-fold Shower Door (per floorplan)
- **Garden Shower w/ Glass Door (per floorplan)**
- **Garden Tub Glass Door (per floorplan)**
- Extra Large 8 cu-ft Double Door RV Refrigerator
- Double Sofa Air Hide-A-Bed
- **Free Standing Dinette w/4 chairs and Flip Leaf**
- Second Drawer under Dinette (n/a with Free Standing Dinette)
- Phone Jack
- Bar Stools (per floorplan)
- Stabilizer Jacks
- **Detachable Hitch**
- Outside Shower
- Slide Room Awning(s)
- Spare Tire, Carrier and Cover
- Exterior LP Gas Grill
- **Living Room Ceiling Paddle Fan w/ Wall Switch**
- Double Insulation (Floor and Roof)
- Cloth Pull Down Night Shades
- Thermostatically Controlled Heated Holding Tanks
- iPod Docking Station

WILDWOOD XL FEATURES



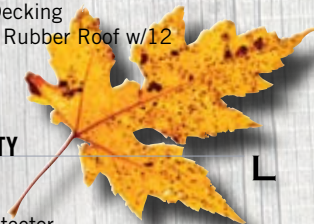
18.5 c.f. Residential Size Refrigerator w/ Ice Maker is Standard in every WILDWOOD XL.



6 Gal. Gas/Electric DSI Water Heater



12 Volt Ceiling Paddle Fan(s) with Wall Switch (Optional)



L A Z B O Y

FOREST RIVER'S HALLMARK OF EXCELLENCE:

PRE-DELIVERY INSPECTION FACILITIES



THAT'S 20,000 SQUARE FEET OF QUALITY ASSURANCE.

THE BARE ESSENTIALS FOR A PREMIUM PRODUCT.

Brought online in 2005, Forest River is proud of its state-of-the-art test facility. This beautiful building blends many of the old tried and true methods of testing our diverse types of RVs with new innovative ways of solving quality issues. Being centrally located to most Forest River manufacturing facilities, this 20,000 square foot PDI (Pre-delivery Inspection) test building gives immediate daily feedback to individual managers. This assures the production facilities that nothing has slipped by the plant's quality assurance personnel and the units are "green" and ready to ship.

PEACE OF MIND.

Forest River has yet another exclusive feature to offer: One year of free roadside assistance will be given to every 2009 Wildwood customer. This is just one more way to say "Thank you" and to ensure an enjoyable traveling experience.



Forest River Encourages You to Buy Locally

Forest River, Inc. strongly encourages our retail customers to purchase from their local dealership whenever possible due to the following factors:

- Our Dealers are as a rule, independently owned and operated businesses. Outside of those customers they personally sold products to, they are not contractually obligated to perform warranty service on Forest River products that were purchased elsewhere. There may be an occasion that you would be required to return to the point of purchase to satisfy warranty requirements.
- Although many dealerships will eventually service products not purchased at their place of business, they will usually take care of their customers and other Forest River customers who are traveling away from their local dealer as they would their own.
- Local purchases allow a customer to establish a relationship with a dealer close to home. This relationship provides the customer with a convenient location for service and support from a "home town" professional.
- The opportunity for a thorough PDI (Pre Delivery Inspection) and product orientation is an additional benefit of buying from your local dealer. Further providing the opportunity for refresher courses or the ability to get questions answered much more conveniently.
- For our Canadian customers, there are also requirements which must be met to bring an RV purchased out of the country to their home. Although not insurmountable, these requirements may involve such things as additional inspections and certifications, taxes and fees. Your local Canadian Dealer is a professional at meeting these requirements.

Forest River's goal is for all RV Owners to fully enjoy their RV experience. In light of this goal, and considering the advantages of buying local, we encourage you to be thorough when determining what product to purchase and which dealer to purchase it from as both are key to your ultimate satisfaction and the realization of your dreams.



Forest River, Inc.
914 C.R. 1
Elkhart, IN 46514
(574) 533-5934
www.forestriverinc.com
www.forestriveraccessories.com

YOUR WILDWOOD DEALER