

# Summit

*Park Models* By Forest River

Value Added Quality by Design™



# Summit Park Models

**BY FOREST RIVER**

The kitchen and dining room of the 40TLFL loft model reflects our desire to provide a bright and spacious area for you to enjoy in your new home. Complete with a large frost-free 2-door refrigerator, spacesaver microwave oven and a home-sized range with oven. Our Summit provides a relaxing environment with all the conveniences to which you are accustomed. The cozy drop-leaf dining table with four comfortable chairs and beautiful cabinetry add the final touches to your secluded vacation.

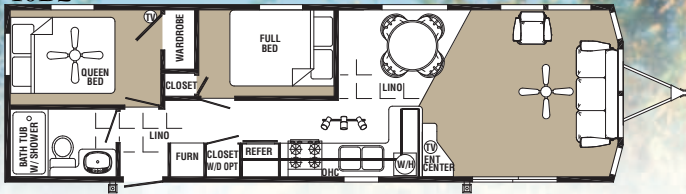


When you own a Summit Park Model, you've achieved a new level of destination camping. Special amenities pamper you in charming style for a truly enjoyable vacation retreat. Every square inch is engineered to enrich your leisure time with home-like comforts and time-saving conveniences. A large variety of floor plans, including loft units, offers versatility to meet your family's needs and desires.

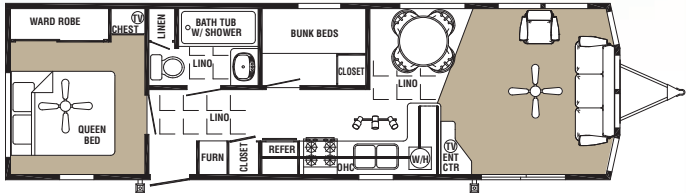


# LOFT UNITS

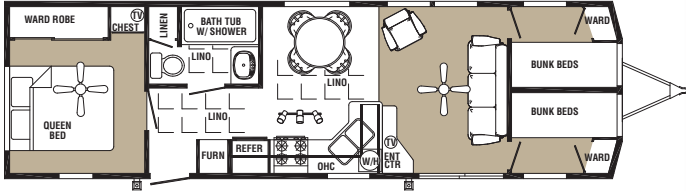
40B2



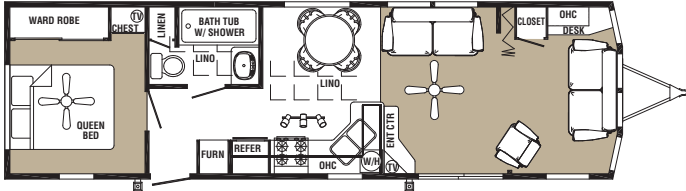
40BH



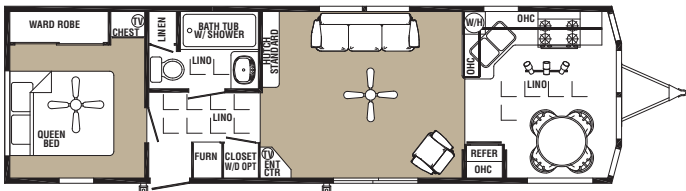
40BH2



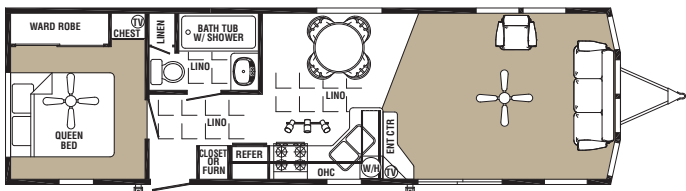
40FD



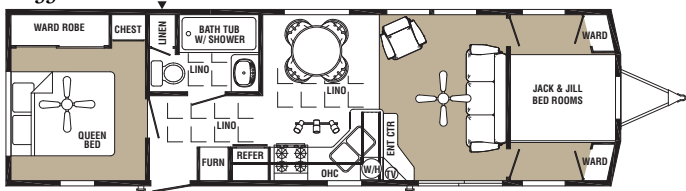
40FK



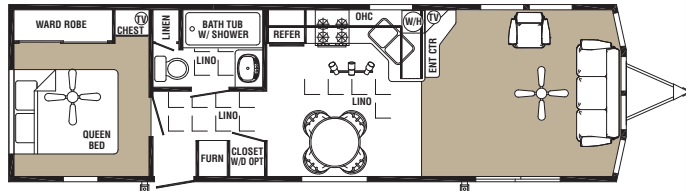
40FL



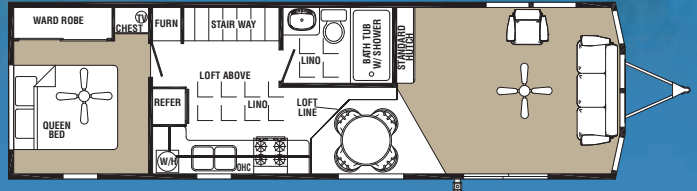
40JJ



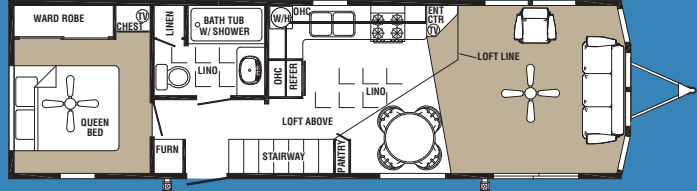
40SD



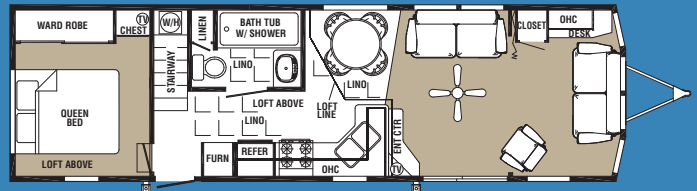
40CBCL



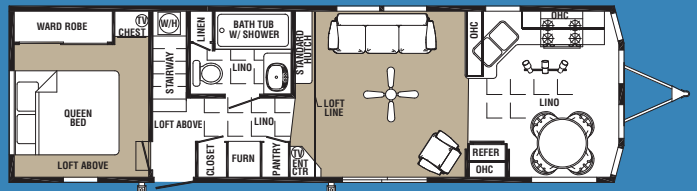
40CKCL



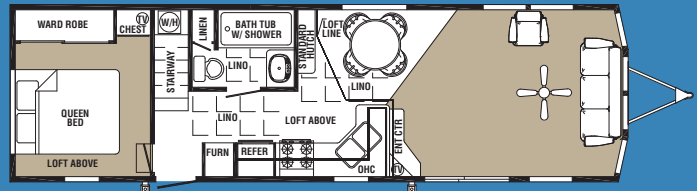
40TLFD



40TLFK



40TLFL



W.A.B. Option



Model number of any particular unit does not necessarily reflect the overall length of the unit itself.

# Summit Park Models

BY FOREST RIVER

## EXTERIOR FEATURES

- 8" I Beam Steel Mains - Basement Frame
- Detachable Hitch
- Corrosion Resistant Underbelly
- 2"x6" Transverse Floor Joist 16" on Center
- Central Floor Heat Duct
- 5/8" T&G Plywood Floor Decking
- Roof Decking with Felt Paper
- Fiberglass Shingles with 20 Year Warranty
- Permanent 5" Soffit - Sidewalls
- R-11 Fiberglass Insulation with Vapor Barrier
- Truss Rafters
- 2"x4" Sidewall Studs 16" on Center
- 7'6" Sidewall Height
- Rear Door with Screen & Deadbolt Lock
- Vinyl Siding with Lifetime Warranty
- Insulative Board
- 110V Recept at City Water Fill
- Residential Style Shutters - W/A

## LIVING GROUP

- Sofa Hide-a-Bed & Swivel Rocker
- Stain Resistant Carpet with Pad
- Custom Draperies (All Windows)
- Vertical Blind at Patio Door
- Decorator Blinds W/A
- 6 Panel Interior Doors
- Ceiling Fan w/Light Kit (1)
- Large Entertainment Center with TV Jack W/A
- Residential Trim (All Windows)
- Decor Coordinated Wall Panels

## KITCHEN / DINING GROUP

- 16 Cubic foot -2 Door Frost Free - White
- 24" Range - White - W/A
- Spacemaster Microwave® - W/A
- Solid Wood Cabinet Doors
- Laminated Counter Top Self-Edged with Back Splash
- Stainless Steel Kitchen Sink
- Drop Leaf Table with 4 Chairs
- Dinette Chairs with Lumbar Support
- "No Wax" Vinyl Floor
- Drawers with Rollers
- GFI Receptacle
- Track Lighting in Kitchen

## BATH GROUP

- 1-Piece Fiberglass Tub/Shower with Grab Bar
- Shower Curtain with Decorator Valance
- Residential Style Ceramic Commode
- Power Exhaust Fan with Light
- Custom Hardwood Medicine Cabinet with Light
- GFI Receptacle
- High Pressure Laminated Vanity Top with Back Splash
- Large Sink with Faucet
- Linen Cabinet W/A
- Residential Style Bath Accessories
- Decorative Bath Panel

## BEDROOM GROUP

- 60"x 75" Box Spring & Mattress with Metal Frame W/A
- Spacious Wardrobes with Drawers Below
- Chest of Drawers W/A
- Egress Window W/A
- Mirrored Wardrobe Doors
- Ceiling Fan with Light W/A

## ADDITIONAL FEATURES

- 50 Amp Electrical Service with Power Cord
- 20 Gal. Electric Water Heater with Exterior Door
- 56,000 BTU Furnace Electronic Ignition - W/A
- Fire Extinguisher
- Exterior GFI Receptacle and Cover
- 2 Exterior Porch Lights
- LP Gas Line
- Touch Control Wall Switches
- Copper Wiring
- Hurricane Tie Downs Straps
- RPTIA Seal
- Smoke Detector
- Cove Ceiling Trim
- Seaspray Ceiling Board
- LP Detector - W/A

## POPULAR OPTIONS

- A.C. 15,000 BTU Floor Ducted Water Heater, 10 Gal. Gas DSI
- Bedspread
- Nightstand & Lamp
- End Table & Lamp
- Metal Underbelly
- Rear Loft W/A
- Front Trap Windows
- Dinette Bay
- Dining Room Hutch W/A
- Home Theater System

Model number of any particular unit does not necessarily reflect the overall length of the unit itself.



A Berkshire-Hathaway Company

Forest River Inc. • Park Model Division  
28936 Phillips Street • Elkhart, IN 46514  
Phone: 574-264-7163 • Fax: 574-264-7364  
www.forestriverinc.com



All illustrations and specifications contained in this literature are based on the latest product information at time of publication. Forest River reserves the right to make changes in prices, colors, materials, equipment and specifications at anytime, without notice, and assumes no responsibility for any error in this literature. All units are shipped F.O.B. point of manufacture.