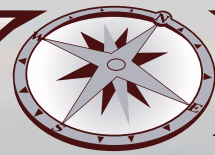


# SURVEYOR



By Forest River

TRUE, SUPER LIGHTWEIGHT TRAVEL TRAILERS AND FIFTH WHEELS



STRONG, DURABLE LAMINATED FIBERGLASS WITH ALL ALUMINUM CAGE CONSTRUCTION

# THE SURVEYOR DIFFERENCE



**SURVEYOR.**  
2" WALL WITH (R-9) BLOCK FOAM INSULATION



**COMPETITION.**  
1.5" WALL WITH (R-5) BLOCK FOAM INSULATION

Structural integrity is not compromised at Surveyor! Surveyor's fully laminated walls are visibly stronger and more durable.



**SURVEYOR.**  
**HEATED AND ENCLOSED UNDERBELLY.**

Surveyor's aerodynamic underbelly is heated and enclosed. The entire underbelly is warmed by radiant heat from the heat duct allowing you to use the coach in colder weather environments. This unique construction method opens up storage space above the floor, while lowering the units' center of gravity for towing ease and stability.

**SURVEYOR.**  
STORAGE



Under every Surveyor queen bed you will find plenty of storage space for all your camping needs, and with 80# gas struts, access has never been easier.

**SURVEYOR.**

SURVEYOR- INDEPENDENT TORSION SUSPENSION SYSTEM WITH SUPERLUBE HUBS AND GOODYEAR™ RADIAL TIRES.



- Fully Independent Wheel Suspension
- No Metal to Metal Contact and no Springs, Shackles, Hangers or U-Bolts to break or wear out
- Lower Trailer Center of Gravity for Improved Stability
- Superlube Hubs allow you to repack Bearings quickly and easily without disassembly.

**SURVEYOR.**  
POWER CORD



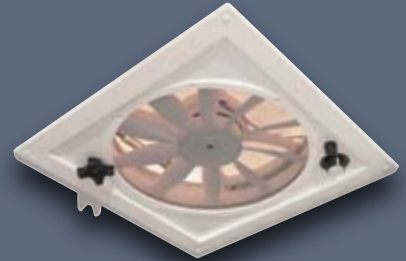
Surveyors Standard detachable power cord.

**SURVEYOR.**  
WATER FILTRATION



You'll appreciate the water filtration system that is standard with each Surveyor. This compact unit filters water for the entire coach, eliminating those unwanted contaminants and odors. Insuring safe drinking water for you and your family.

**SURVEYOR.**  
FANTASTIC FAN STANDARD



Fantastic Fans are standard in all baths. This 12" 10-blade bath fan significantly increases air circulation and the removal of condensation as compared to the industry's standard smaller power bath vent.



**SURVEYOR.**  
ONE-YEAR ASSISTANCE

Forest River, Inc., in affiliation with Coach-Net®, is providing one (1) year of free Roadside Assistance to all retail purchasers of new Surveyor Travel Trailers and Fifth Wheels. This is just one more way to say "Thank You" and to ensure you have an enjoyable camping experience.

- Emergency Roadside Assistance
- Nationwide Service Appointment Assistance
- Dispatch of On-site Mechanical Service
- \$2000 Trip Interruption Reimbursement
- 24-Hour Toll-Free Emergency Message Service
- Custom Trip Routing and Full Color Maps

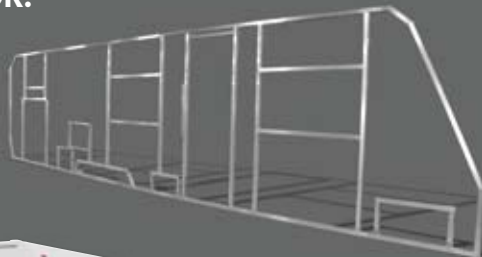


**SURVEYOR.** SEAL TEST

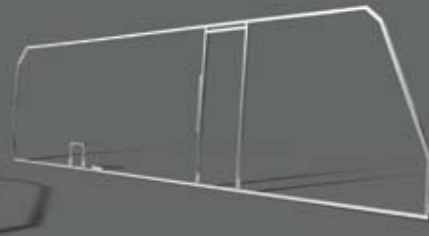
Every Surveyor is pressurized and soap tested at every seam and opening to ensure a water tight seal. Surveyor prevents water leaks!

**NO SKELETONS IN OUR CLOSET.**

**SURVEYOR.**



**COMPETITION.**



**What's in your sidewall?** Your Surveyor is constructed with 1.5" tubular aluminum framing in "all" openings. Is this necessary - we think so! Aluminum framed openings add strength and integrity to every Surveyor sidewall. No other lightweight trailer compares.



Model SV235 RKS: Stone Creek Interior



Surveyor's Self-Supporting 12V Power Rear Slide system opens, closes and locks with the single push of a button. No bulky support bars or locks to manually install.

The optional white sand interior wood package (shown left) with its thermofoil cabinetry is specially suited to the RV environment. It's light, remarkably durable and easy to maintain. (Shown-New King Bed Rear slide in the SV 235 RKS)



Model SV291: Cypress Interior with wood plank vinyl flooring option



Surveyor's Aerodynamic exterior design, streamlined front end, lower center of gravity, independent torsion axles and enclosed underbelly, substantially reduces air turbulence and increases stability during travel.



Model SV303: Rustic Sunset Interior

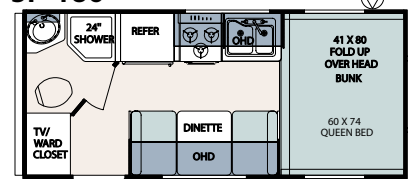


Model SV303: Rustic Sunset Interior

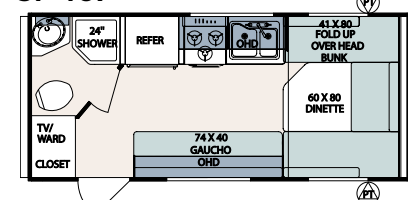
Luxury is well within your reach in this extraordinary Surveyor travel trailer. Beautiful residential style cabinetry and kitchen, raised panel cabinet doors, spacious pantry, plus the large entertainment center makes this a great choice for affordable elegance.

## SURVEYOR SPORT FLOORPLANS

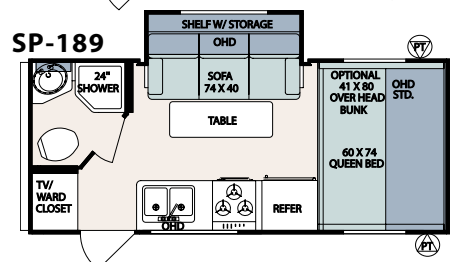
### SP-186



### SP-187



### SP-189

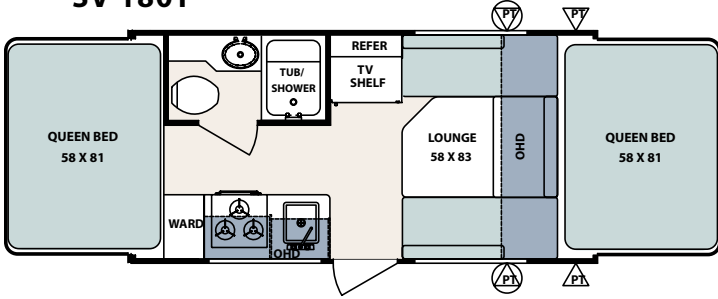


## SURVEYOR SPORT SPECIFICATIONS

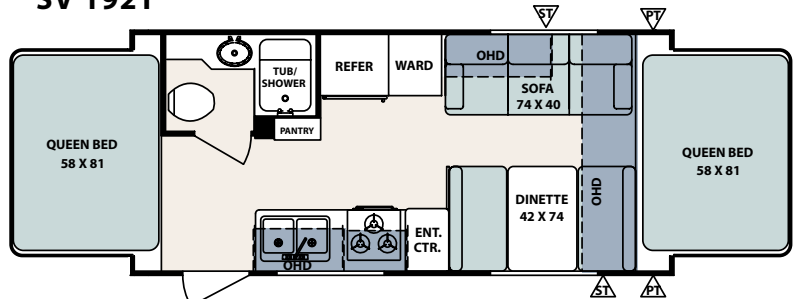
	SP-186	SP-187	SP-189
*Total Dry Weight	2743	2759	3017
Load Capacity	2239	2213	2041
Hitch Weight	235	225	311
Overall length	19'6"	19'6"	20'6"
Exterior Width	7'0"	7'0"	7'0"
Exterior Height (roof edge)	8'4"	8'4"	8'4"
Fresh Water (gal.)	36	36	36
Grey Water (gal.)	30	30	30
Black Water (gal.)	30	30	30
Tire Size: 205/75/R14	STD	STD	STD
Tire Size: 225/75/R15	N/A	N/A	N/A

**SURVEYOR EXPANDABLES • 8' WIDE**

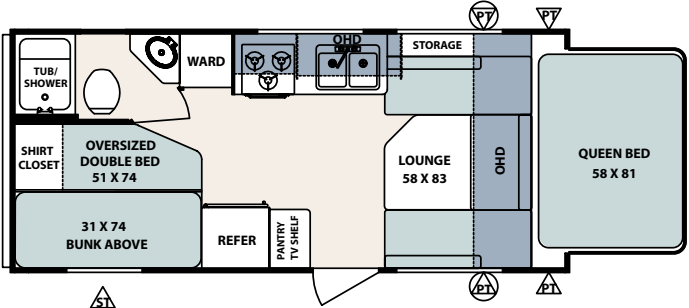
**SV 180T**



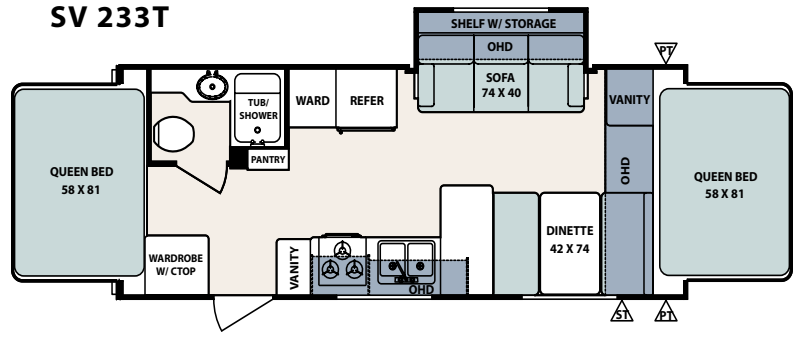
**SV 192T**



**SV 210T**



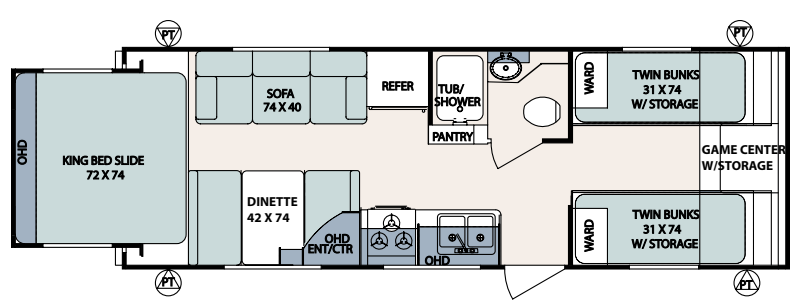
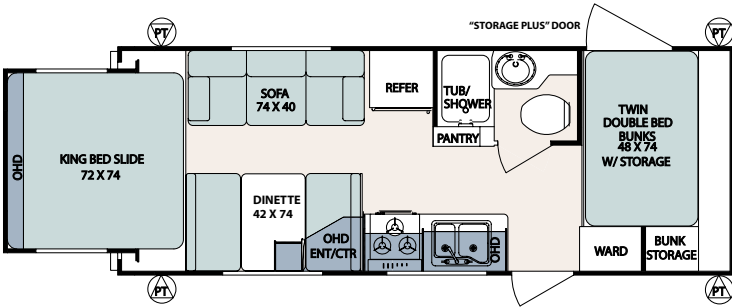
**SV 233T**



**SV 235RKS**

**SURVEYOR REAR SLIDES • 8' WIDE**

**SV 255RKS**

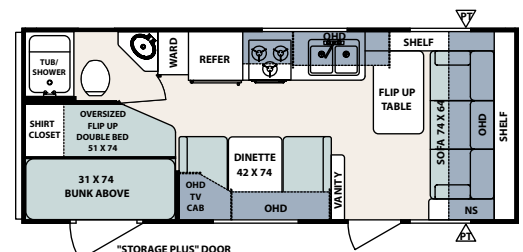
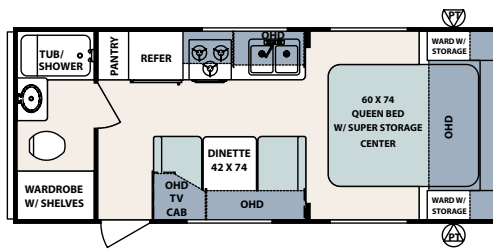
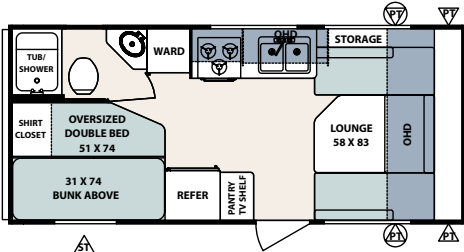


**SURVEYOR TRAVEL TRAILERS - 8' WIDE**

**SV 210**

**SV 230**

**SV 234**



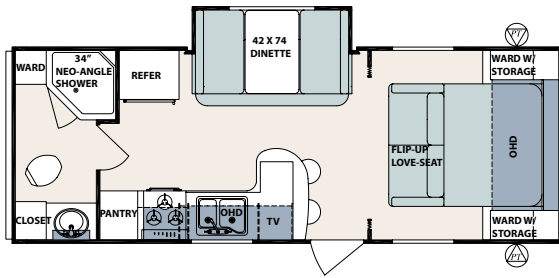
	SV180T	SV192T	SV210T	SV233T	SV235RKS	SV255RKS	SV210	SV230	SV234	SV249	SV250	SV264	SV282	SV291	SV301	SV302	SV303	SV304
--	--------	--------	--------	--------	----------	----------	-------	-------	-------	-------	-------	-------	-------	-------	-------	-------	-------	-------

*Total Dry Weight	2764	3500	3498	3814	4064	4206	3121	3335	3447	TBD	3789	4179	6008	4490	6790	5850	6095	6065
Load Capacity	957	1638	1789	1372	2939	2722	1790	1470	1544	TBD	1211	2814	2914	2475	2743	3086	2710	2896
Hitch Weight	456	393	542	441	476	403	386	280	466	TBD	475	468	797	440	933	811	680	836
Overall length (closed)	18'8"	21'10"	22'6"	24'11"	25'8"	28'3"	22'6"	23'11"	24'5"	26'6"	26'6"	28'6"	30'8"	30'6"	33'2"	32'8"	33'2"	34'3"
Overall length (open)	21'6"	24'9"	22'6"	27'9"	29'8"	32'3"	N/A	N/A	N/A	N/A	N/A	N/A	N/A	N/A	N/A	N/A	N/A	N/A
Exterior Width	8'0"	8'0"	8'0"	8'0"	8'0"	8'0"	8'0"	8'0"	8'0"	8'0"	8'0"	8'0"	8'0"	8'0"	8'0"	8'0"	8'0"	8'0"
Exterior Height (roof edge)	8'6"	8'6"	8'6"	8'6"	8'6"	8'8"	8'6"	8'6"	8'8"	8'8"	8'8"	8'8"	9'6"	8'8"	9'6"	9'6"	9'6"	9'6"
Fresh Water (gal.)	36	36	36	36	36	36	36	36	36	36	36	36	36	36	36	36	36	36
Grey Water (gal.)	30	30	30	30	30	30	30	30	30	30	30	30	30	30	60	30	30	30
Black Water (gal.)	30	30	30	30	30	30	30	30	30	30	30	30	30	30	30	30	30	30
Tire Size: 205/75/R14	STD	STD	STD	STD	STD	STD	STD	STD	STD	STD	STD	STD	N/A	STD	N/A	N/A	N/A	N/A
Tire Size: 225/75/R15	N/A	N/A	N/A	N/A	N/A	N/A	N/A	N/A	N/A	N/A	N/A	N/A	STD	N/A	STD	STD	STD	STD

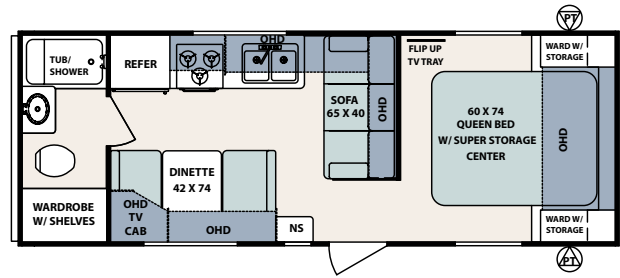
\*We know weights and dimensions are an important part of your buying decision. Surveyor weighs every model to ensure accuracy.



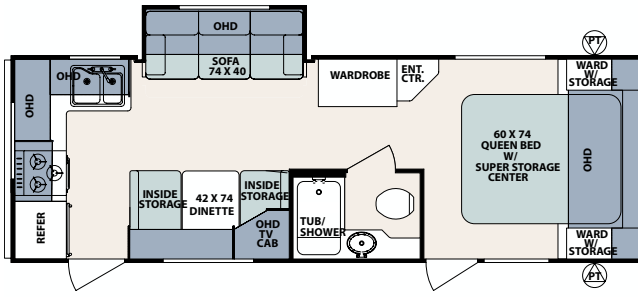
SV 249



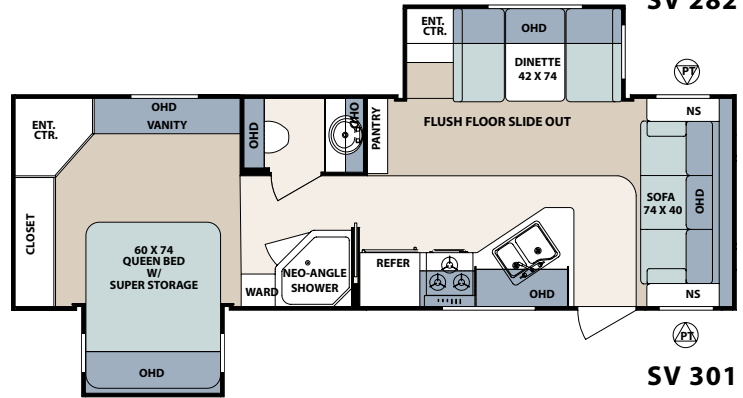
SV 250



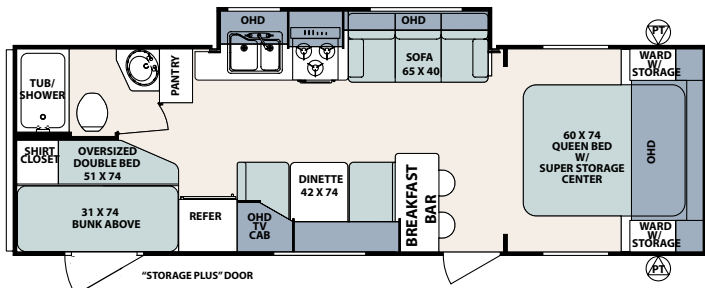
SV 264



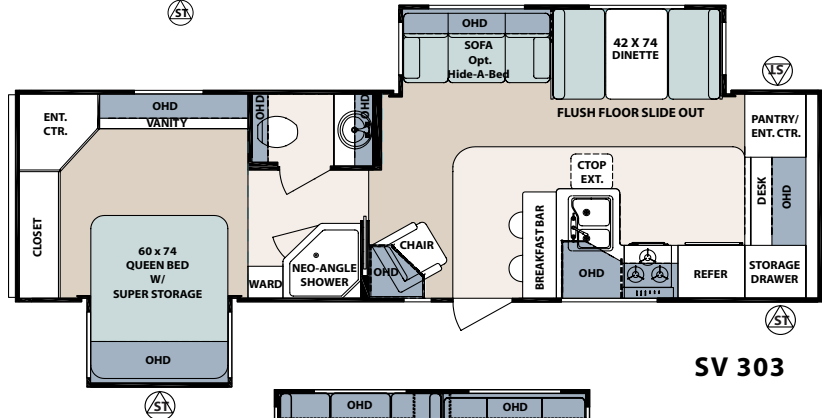
SV 282



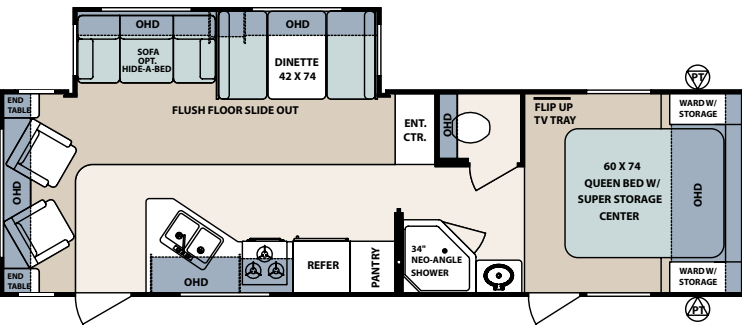
SV 291



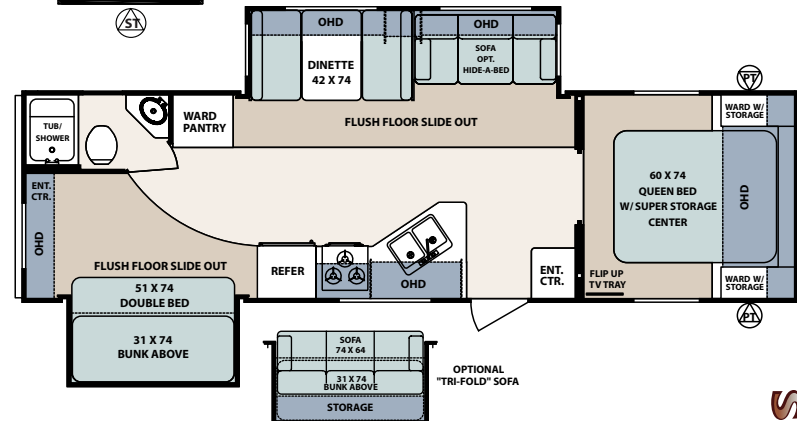
SV 301



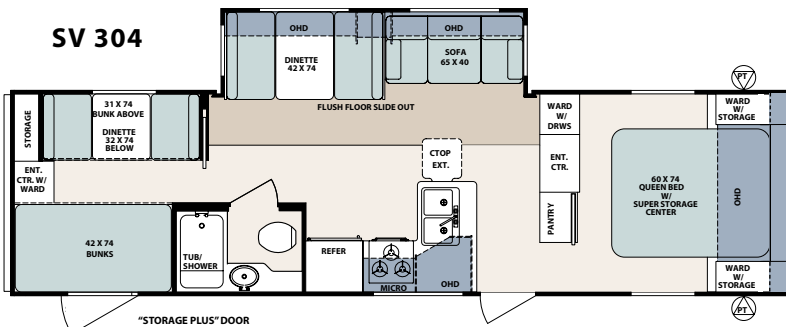
SV 302



SV 303

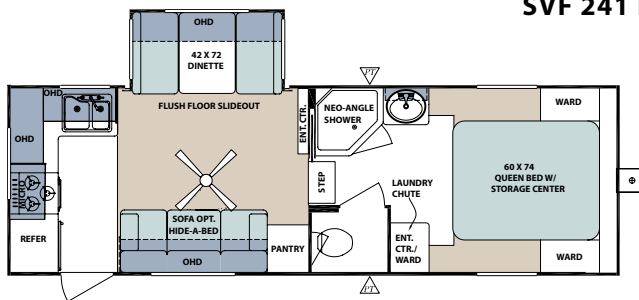


SV 304

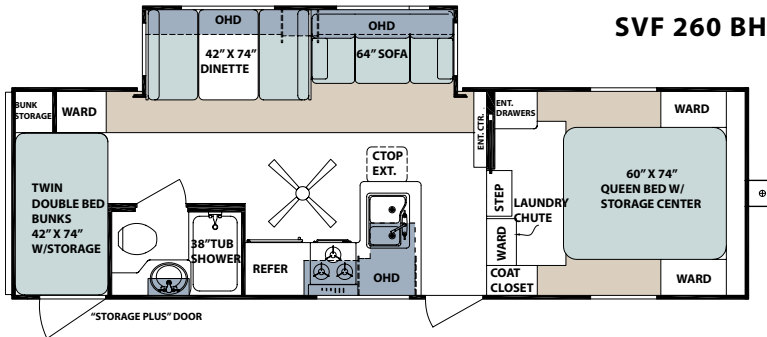


# SURVEYOR FIFTH WHEELS

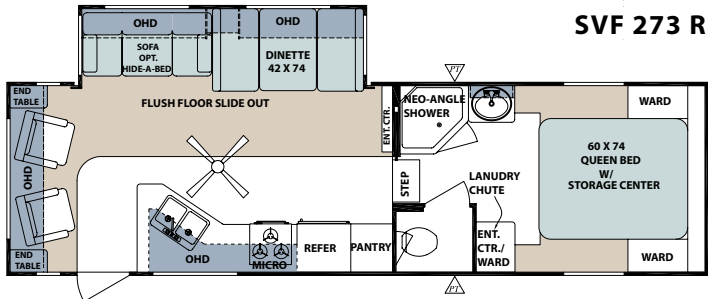
**SVF 241 RK**



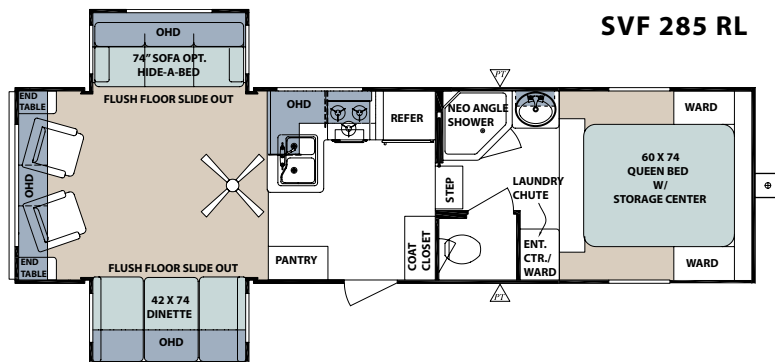
**SVF 260 BH**



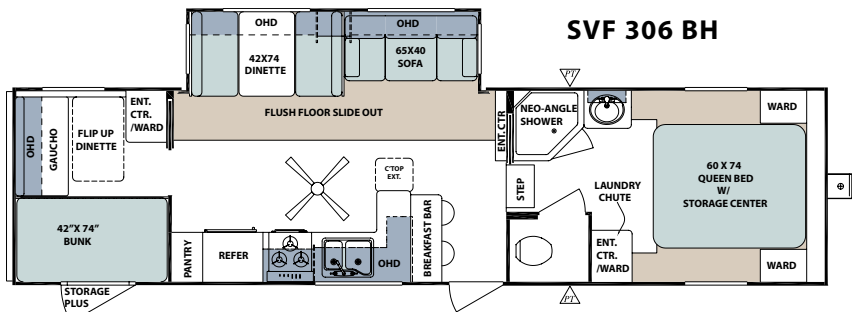
**SVF 273 RL**



**SVF 285 RL**



**SVF 306 BH**

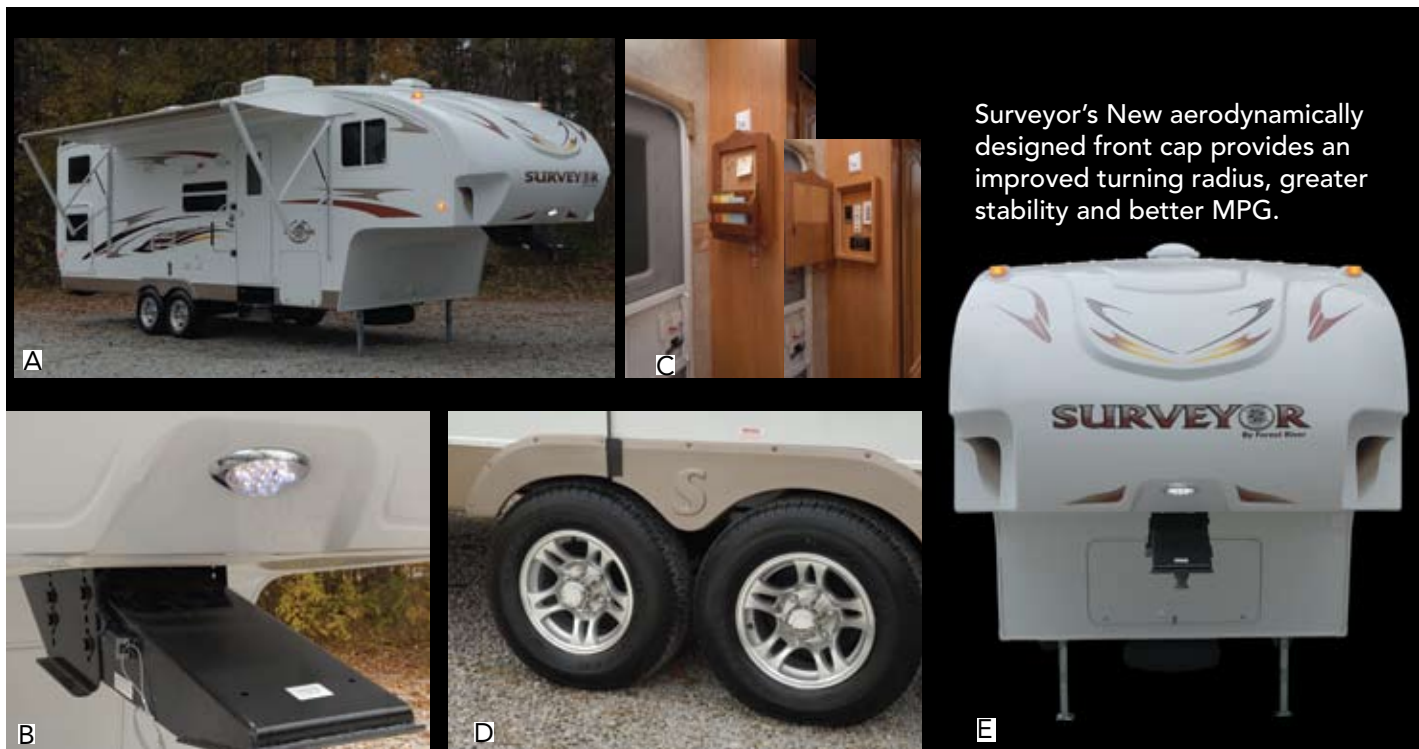


## SURVEYOR FIFTH WHEEL SPECIFICATIONS

	SVF241RK	SVF260BH	SVF273RL	SVF285RL	SVF306BH
*Total Dry Weight	6063	6393	7079	7212	7301
Load Capacity	1426	3051	2368	2250	2356
Hitch Weight	967	1322	1325	1340	1535
Overall length	26'7"	29'1"	29'3"	31'11"	34'2"
Exterior Width	8'0"	8'0"	8'0"	8'0"	8'0"
Exterior Height (roof edge)	10'8"	10'9"	10'9"	10'9"	10'9"
Fresh Water (gal.)	45	45	45	45	45
Grey Water (gal.)	70	35	35	70	70
Black Water (gal.)	35	35	35	35	35
Tire Size: 205/75/R14	STD	N/A	N/A	N/A	N/A
Tire Size: 225/75/R15	N/A	STD	STD	STD	STD



## FIFTH WHEEL STANDARDS



Surveyor's New aerodynamically designed front cap provides an improved turning radius, greater stability and better MPG.





SVF285RL: Sandstone Interior with wood plank vinyl flooring option



F



H

A. A & E Electric Awning. Helps make set-up a breeze.

B. L.E.D. Docking light for the ease of hook-up at night.

C. . Innovative message center with key hooks also provides easy access to all your controls.

D. Aluminum Rims.

E. Surveyor's aerodynamic front cap, designed for improved turning radius.

F. Brushed Nickel ceiling fan

G. Laundry chute.

H. 5.1 Dolby Digital surround sound, CD stereo W/DVD Player and 19" HD Flat Screen TV.

I. Two (2) Pull out dinette storage drawers.

J. Slide out pantry with pull out sponge tray.



G



I



J

## APPLIANCES/EQUIPMENT

- Air conditioner ready
- Color-coded water lines
- Copper gas lines, double flared
- Dometic, flush-mount refrigerator
- Demand water pump
- Deep double-bowl kitchen sink w/ high rise faucet
- Power range hood with light
- Six gallon gas/electric DSI water heater
- Three burner range top
- 20,000 BTU furnace (ducted 23 - 26)
- 30,000 BTU ducted furnace (27 and above)
- Water heater bypass system
- Monitor Panel

## BATH

- Fiberglass tub/shower
- Adjustable shower head/faucet
- Lavatory sink and faucet
- Wood medicine cabinet with mirror
- Shower curtain with tieback
- Thetford commode
- Skylight in tub/shower
- Monitor Panel

## CONSTRUCTION

- Welded, Aluminum framed, laminated roof with 3" block foam insulation (R14) & ducted A/C (25' and above travel trailers)
- Welded, aluminum framed, laminated roof with 1-1/2" block foam insulation (R9) (Expandables and 24' and below travel trailers)
- Welded, aluminum cage constructed, laminated 2" wall with 1-1/2" block foam insulation (R9)
- Welded, aluminum framed, laminated floor with 1-1/2" block foam insulation (R9)
- Electric powered slide-out mechanism
- Electric powered rear slide-out mechanism with 1000# capacity
- Truss roof 16" on center w/ rolled fiberglass insulation (5th wheels)
- 3/8" roof decking (5th wheels)

## ELECTRICAL

- Detachable 28', 30-amp power cord
- 55 amp converter with charger
- Exterior 120 volt recept
- Patio light with amber lens
- 12 volt interior lighting
- 120 volt GFI protected circuit Safety

## EXPANDABLE BEDS

- Vinyl Weathershield tent(s)
- Automotive rubber gasket and compression latches
- Decorative bunk cushions
- Radius door w/ hinge
- 1000 lb. capacity

## SAFETY

- Breakaway switch
- Fire extinguisher
- LP detector
- Smoke Detector
- Ground fault protected electrical circuit(s)
- Dead-bolt door lock
- Safety chains
- Multiple egress windows
- CO Detector

## EXTERIOR

- Rubber roof with 12 year warranty
- Lamilux Super 1000 Fiberglass skin with 2 year warranty
- Radius corner windows
- Butyl tape sealant on seams
- Combination entrance/screen door with dead-bolt lock
- Outside storage compartment(s) w/ Rubber D-Seal
- Self-storing step(s)
- Designer exterior graphics
- Rotocast holding tanks
- Rotocast fresh water tank
- 30# LP tanks
- Heated enclosed underbelly
- Drip rails and down spout

## INTERIOR

- Sofa bolsters
- Knife block behind stove
- Panoramic galley window
- Valances with mini-blinds
- No-wax seamless vinyl flooring
- Solid lumber core cabinet fronts assembled with screws
- Residential style cabinet doors with concealed hinges
- Reversible dinette and bunk cushions
- Power range hood with light
- Decorative head board
- Residential style wood drawers w/ metal glides
- In-floor heat ducts
- 78" interior height
- Camel back sofa (Radius)
- Camel back dinette cushions (Radius)
- Decorative oval wall clock
- 80# gas bed struts (Queen beds)
- Adjustable shelves in pantry (Where applicable)
- Message Center with Key Hooks

## PLUMBING

- Rotocast holding tanks, underfloor
- Rotocast fresh water tank, underfloor
- Demand waterpump, 12-volt
- City water fill
- Gravity water fill
- Monitor panel
- Water heater bypass kit
- Winterization kit

## RUNNING GEAR

- Super-lube hubs
- Galvanized steel wheel wells
- Independent Torsion suspension system
- Radial trailer tires
- Electric Brakes, all wheels
- Tough, powder coated frame
- 2-5/16" coupler
- Extended hitch pin (5th wheels)

## EXPANDABLE OPTIONS

**Interior Luxury Package:** Approx. wt. 90 lbs  
Stove cover, CD stereo w/ Remote control & 4 speakers 2 (SV180T & SPORTS). Water filtration system, 3 speed Fantastic Fan, 6 gallon G/E DSI water heater, 3 burner cooktop, sink covers, tub surround, & microwave.

**Exterior Luxury Package:** Approx. wt. 163 lbs  
A&E awning, battery box, 30# LP bottles w/cover, spare tire/carrier & cover, outside shower, stabilizer jacks (4), TV antenna w/cable-satellite hook-up.

## TRAVEL TRAILER OPTIONS

**Interior Luxury Package:** Approx. wt. 208 lbs  
Stove cover, CD Stereo w/Remote control & 4 speakers, water filtration system, 3 speed Fantastic Fan, 6 gallon G/E DSI water heater, gas oven, sink covers (2), tub surround, microwave, double door refrigerator

**Exterior Luxury Package:** Approx. wt 267 lbs  
A&E awning, 13,500 BTU air conditioner, battery box, 30# LP bottles w/cover, spare tire/carrier & cover, outside shower, stabilizer jacks, TV antenna w/cable-satellite hookup

## FIFTH WHEEL OPTIONS

**Interior Luxury Package:** Approx wt. 213 lbs  
19" HD Flat Screen T.V., 5.1 Dolby digital surround sound, remote controlled CD stereo w/DVD player, stove cover, water filtration system, 3 speed Fantastic Fan, 6 gallon G/E DSI water heater, gas oven, sink covers (2) microwave, 2 door refrigerator, tub surround

**Exterior Luxury Package:** Approx wt. 265 lbs  
A&E Electric awning, 13,500 BTU air conditioner, triple step, 30# LP bottles, spare tire, outside shower, fiberglass front cap, power front jacks, rear stabilizer jacks, TV antenna w/ cable-satellite hookup



## OPTIONS APPROXIMATE WEIGHT

Air conditioner, 13,500 BTU (EXP.) and SPORTS	104 lbs
Air conditioner, 15,000 BTU IPO 13,500	2 lbs
Gas oven (EXP.) and SPORTS	38 lbs
Refrigerator, 2-door (EXP.) & SPORTS n/a SV180T	17 lbs
White sand interior wood package	0 lbs
Outside stereo speakers (2)	5 lbs
Chrome wheel covers	8 lbs
Outside grill	15 lbs
Tinted safety glass	0 lbs
Outside storage drawer (select models)	45 lbs
Raised panel refrigerator door inserts	18 lbs
Axle riser w/double step (select models)	10 lbs
Day/nite shades	0 lbs
Trifold sofa IPO double bed (SV303)	25 lbs
Hide-a-bed sofa (select models)	35 lbs
Free Standing Dinette w/4 chairs (Flush Floor Slides)	0 lbs
Power Tongue Jack	10 lbs
Roof Ladder (N/A rear exp. & rear slide-out models)	15 lbs
Slide-Out awning topper	35 lbs
Outside entertainment center (5th wheels only)	3 lbs
Double Step N/A SPORTS	20 lbs
41" Folding Bunk Bed (SP-189 Only)	129 lbs
Exterior Assist grab handle	2 lbs
"Arctic Package" (Ultra heat pads on all Tanks)	3 lbs

## FOREST RIVER ADVANTAGE

- Fantastic Fan in Bath
- Water Filtration System (entire unit) 20 lbs



Radius bunk ends with 1,000 lb. capacity are standard on our expandable models. The radius corners are stronger, while large drip rails and automotive rubber seals help prevent moisture penetration. Vinyl weathershield tents offer double flap seals and stain-resistant interiors.

## CUSTOMER VALUE PACKAGE (FIFTH WHEELS)

- Ultra Heat Pads
- Aluminum Spoked Rims
- Assist Grab Handle
- Brushed Nickel Ceiling Fan
- Paper Towel Holder
- Two (2) Exterior Speakers
- Two (2) Booth Dinette Drawers
- Day/Night Shades
- Exterior Jack
- 110V Outlet By Awning

## General Warranty Information

Warranty - Among the best in the industry. See your local Surveyor dealer for details

## Forest River Encourages You to Buy Locally

Forest River, Inc. strongly encourages our retail customers to purchase from their local dealership whenever possible due to the following factors:

- Our Dealers are as a rule, independently owned and operated businesses. Outside of those customers they personally sold products to, they are not contractually obligated to perform warranty service on Forest River products that were purchased elsewhere. There may be an occasion that you would be required to return to the point of purchase to satisfy warranty requirements.
- Although many dealerships will eventually service products not purchased at their place of business, they will usually take care of their customers and other Forest River customers who are traveling away from their local dealer as they would their own.

• Local purchases allow a customer to establish a relationship with a dealer close to home. This relationship provides the customer with a convenient location for service and support from a "home town" professional.

• The opportunity for a thorough PDI (Pre Delivery Inspection) and product orientation is an additional benefit of buying from your local dealer. Further providing the opportunity for refresher courses or the ability to get questions answered much more conveniently.

• For our Canadian customers, there are also requirements which must be met to bring an RV purchased out of the country to their home. Although not insurmountable, these requirements may involve such things as additional inspections and certifications, taxes and fees. Your local Canadian Dealer is a professional at meeting these requirements.

Forest River's goal is for all RV Owners to fully enjoy their RV experience. In light of this goal, and considering the advantages of buying local, we encourage you to be thorough when determining what product to purchase and which dealer to purchase it from as both are key to your ultimate satisfaction and the realization of your dreams.

By Forest River

# TOWING GUIDE

The tow ratings listed below are the highest available for the respective models listed. Certain optional equipment may be required and other restrictions may apply. See your automotive dealer for more information.

ACURA	Engine	Max Towing
MDX	3.5L V-6	3,500

AM GENERAL	Engine	Max Towing
H1 4 dr Open Top	6.6LTD	9,303
H1 4 dr Wagon	6.6LTD	9,036
H2	6.0LV-8	6,700
H2 SUT	6.0LV-8	6,600
H3	3.5LI-5	4,500

BMW	Engine	Max Towing
X3 2.5i	2.5L I-6	3,500
X3 3.0i	3.0L I-6	3,500
X5 3.0i	3.0L I-6	6,000
X5 4.4i	4.4L V-8	6,000
X5 4.8is	4.8L V-8	6,000

BUICK	Engine	Max Towing
Rendezvous	All	3,500
Terraza	3.9L V-6	3,500
Rainier(2WD)	4.2L I-6	5,800
Rainier(2WD)	5.3L V-8	6,700
Rainier AWD	4.2L I-6	5,600
Rainier AWD	5.3L V-8	6,600

CADILLAC	Engine	Max Towing
Escalade 2WD	6.2L V-8	7,400
Escalade AWD	6.2L V-8	8,100
Escalade ESV	6.2L V-8	7,800
Escalade EXT	6.2L V-8	7,600
SRX	4.6L V-8	4,250

CHEVROLET/GMC	Engine	Max Towing
Acadia	3.6L V-6	4,500
Avalanche 1500(2WD)	5.3L V-8	8,000
Avalanche 1500(4WD)	5.3L V-8	7,800
Colorado/Canyon Ext.Cab (2WD)	3.5LI-5	4,000
Colorado/Canyon Ext.Cab(4WD)	3.7LI-5	4,000
Equinox	3.4L V-6	3,500
Express/Savana 1500 RWB	5.3L V-8	6,300
Express/Savana 2500 RWB	6.0L V-8	9,800
Silverado/Sierra 1500 Reg. Cab (2WD)	5.3L V-8	8,200
Silverado/Sierra 1500 Reg. Cab (4WD)	5.3L V-8	8,900
Silverado/Sierra 1500 Crew Cab (2WD)	6.0L V-8	10,300
Silverado/Sierra 1500 Crew Cab (4WD)	6.0L V-8	10,500
SSR	6.0L V-8	7,800
Tahoe/Yukon (2WD)	5.3L V-8	7,200
Tahoe/Yukon (4WD)	5.3L V-8	7,700
Suburban/Yukon XL (2WD)	5.3L V-8	8,100
Suburban/Yukon XL (4WD)	5.3L V-8	8,000
Trailblazer/Envoy (2WD)	5.3L V-8	6,800
Trailblazer/Envoy (4WD)	5.3L V-8	6,600

DAIMLER/CHRYSLER	Engine	Max Towing
Caravan/Grand Caravan	3.8L V-6	3,800
Dakota Club Cab (2WD)	3.7L V-6	4,900
Dakota Club Cab (4WD)	3.7L V-6	4,700
Dakota Club Cab (4WD)	4.7L V-8	7,000
Dakota Quad Cab (2WD)	3.7L V-6	4,800
Dakota Quad Cab (4WD)	3.7L V-6	4,600
Dakota Quad Cab (4WD)	4.7L V-6	6,850
Durango SLT(2WD)	5.7L V-8	8,950
Durango (2WD)	4.7L V-8	7,500

Durango SLT(4WD)	5.7L V-8	8,750
Durango (4WD)	4.7L V-8	7,350
Nitro	3.7L V-6	5,000
Ram Reg. Cab (2WD)	4.7L V-8	7,450
Ram Reg. Cab (4WD)	4.7L V-8	7,400
Ram Quad Cab (2WD)	4.7L V-8	7,100
Ram Quad Cab (4WD)	4.7L V-8	7,050
Town + Country	3.8L V-6	3,800

FORD	Engine	Max Towing
Econoline Van (150)	4.6L V-8	6,500
Econoline Van (150)	5.4L V-8	6,300
Escape	3.0L V-6	3,500
Expedition (2WD)	5.4L V-8	9,100
Expedition (4WD)	5.4L V-8	9,030
Explorer (2WD)	4.6L V-8	7,300
Explorer (4WD)	4.6L V-8	7,050
Sport Trac (2WD)	4.0L V-6	5,300
Sport Trac (4WD)	4.0L V-6	5,080
F-150 Reg. Cab (2WD)	5.4L V-8	8,500
F-150 Reg. Cab (4WD)	5.4L V-8	8,500
F-150 Super Crew (2WD)	5.4L V-8	9,500
F-150 Super Crew (4WD)	5.4L V-8	9,200
Ranger Long Box (2WD)	4.0L V-6	6,000
Ranger Long Box (4WD)	4.0L V-6	5,640
Sport-Trac (2WD)	4.6L V-8	6,800
Sport-Trac (4WD)	4.6L V-8	6,640

HONDA	Engine	Max Towing
Odyssey	3.5L V-6	3,500
Pilot	3.5L V-6	4,300
Ridgeline	3.5L V-6	5,000

INFINITI	Engine	Max Towing
QX56 (2WD)	5.6L V-8	9,000
FX	All	3,500

ISUZU	Engine	Max Towing
Ascender (2WD)	4.2L I-6	5,800
Ascender (4WD)	4.2L I-6	5,700
I 370 (4WD)	3.7L I-5	4,000

JEEP	Engine	Max Towing
Commander (2WD)	4.7L V-8	6,500
Commander (4WD)	4.7L V-8	6,500
Grand Cherokee	4.7L V-8	6,500
Grand Cherokee	5.7L V-8	7,200
Liberty (2WD)	3.7L V-6	5,000
Liberty (4WD)	3.7L V-6	5,000

KIA	Engine	Max Towing
Sorento	3.8L V-6	5,000
Sedona	3.8L V-6	3,500

LAND ROVER	Engine	Max Towing
Range Rover	All	7,700
Range Rover Sport	All	7,700
LR3	All	7,700

LEXUS	Engine	Max Towing
RX 330	3.3L V-6	3,500
GX 470	4.7L V-8	6,500
LX 470	4.7L V-8	6,500
RX 350	3.5L V-6	3,500

LINCOLN/MERCURY	Engine	Max Towing
Mark LT (2WD)	5.4L V-8	5,316
Mark LT (4WD)	5.4L V-8	5,602
Mariner	3.0L V-6	3,500
Mountaineer (2WD)	4.6L V-8	7,240
Mountaineer (AWD)	4.6L V-8	7,060
Navigator (2WD)	5.4L V-8	8,950
Navigator (4WD)	5.4L V-8	8,750

MAZDA	Engine	Max Towing
B-4000 (4WD)	4.0L V-6	5,580
Tribute	3.0L V-6	3,500
CX-9	3.5L V-6	3,500

MERCEDES-BENZ	Engine	Max Towing
G500	V-8	7,000
G55 AMG	V-8	7,000
ML 350	3.2LV6	5,000
ML 500	V-8	5,000

MITSUBISHI	Engine	Max Towing
Endeavor	3.8L V-6	3,500

NISSAN	Engine	Max Towing
Armada (2WD)	5.6L V-8	9,100
Armada (4WD)	5.6L V-8	9,000
Frontier (4WD)	4.0L V-6	6,300
Pathfinder	4.0L V-6	6,000

Titan	5.6L V-8	9,400
Xterra	4.0L V-6	5,000

PONTIAC	Engine	Max Towing
Montana	3.5L V-6	3,500
Torrent	3.4L V-6	3,500

PORSCHE	Engine	Max Towing
Cayenne	All	7,716

SAAB	Engine	Max Towing
9-7X	4.2L I-6	5,600
9-7X	5.3L V-8	6,500

SATURN	Engine	Max Towing
Relay	All	3,500
Vue	3.5L V-6	3,500
Outlook	3.6L V-6	4,500

SUBARU	Engine	Max Towing
B9 Tribeca	3.0H-6	3,500

SUZUKI	Engine	Max Towing
XL-7	3.5L V-6	3,500

TOYOTA	Engine	Max Towing
4 Runner (2WD)	4.7L V-8	7,300
4 Runner (4WD)	4.7L V-8	7,000
Land Cruiser	4.7L V-8	6,500
FJ Cruiser	4.0L V-6	5,000

YOUR SURVEYOR DEALER



**Forest River Inc., 2405 Century Drive Goshen, IN 46528**  
[www.forestriverinc.com](http://www.forestriverinc.com), [www.forestriveraccessories.com](http://www.forestriveraccessories.com)  
**Ph. 574.642.3119**

As Surveyor constantly strives to improve our product, all specifications listed in this informative brochure are subject to change without notice or obligation. Photos may show optional equipment which is not included in the purchase price of the unit. Review a current model on your dealer's lot today. Litho: U.S.A. FOR 0512