



**The Overhead Cabinet** in the galley provides easy access to kitchen essentials like your favorite full-size plates and pasta bowls.

**The Entertainment Center** with available LCD TV and DVD Player with iPod plug-in and charging station allows you to enjoy a movie when it's time to wind down for the night.



**The Bathroom** includes a mirrored medicine cabinet that makes it easy to check your pearly whites.



**The Master Bedroom** feels just as relaxing as yours at home. After a long day at the river, you can float away on the queen bed with innerspring mattress.

**The Galley** has everything you need to create a freshly caught home-cooked dinner. A pots and pans drawer with full extension roller bearing drawer guides, a double door refrigerator, a microwave, and a 3-burner range with 22" oven are standard.



**The Dinette** provides a comfortable place to enjoy sandwiches or family game night.



**The Full Extension Galley Drawers** smoothly glide out all the way so that you can easily reach items at the back.



**Under Dinette Storage** has you sitting on a gold mine of opportunity to stow away a motherload of gear, toys, or whatever—all kept safe and easily accessible, but conveniently out of the way and out of sight.



After a day in nature's wilderness, there's nothing better than relaxing in yours. Sure, you love the outdoors. But sometimes it's nice to be indoors, enjoying a different kind of wide-open space. Like the kind found inside your Wilderness. Functional floor plans give you room to spread out. While brand-name comforts give you the cozy feel of home.



**Wilderness 260RLS** shown in Cypress Pearl interior with Plantation Cherry wood cabinetry.



**The Wardrobe** designed to hold full-size hangers, keeps your clothes neat and clean.



**WHY WILDERNESS?**



**QUALITY**  
There's no cutting corners. Skilled craftsmen build every Fleetwood RV for maximum durability and longevity.



**WARRANTY**  
Exclusive RV Ownercare warranty. See your Fleetwood dealer for details.



**PASSION**  
We're truly passionate about the RV lifestyle. Fleetwood was founded by RV enthusiasts, and that tradition continues today.



**SERVICE**  
Help is nearby. When you need an upgrade or repair, you'll find Fleetwood dealers all across North America to assist you.



**TRUST**  
More people trust Fleetwood. After all, we've spent over 50 years perfecting RVs, earning the loyalty of generations of RVers.

**CONTACT US**

To locate a dealer near you, visit our website at [www.fleetwoodrv.com](http://www.fleetwoodrv.com) or call 1-800-444-4905. We can also be contacted at Fleetwood Customer Relations, P.O. Box 1007, Decatur, IN 46733.

**FLEETWOOD TRAVELCADE CLUB**

As a Fleetwood owner, you're invited to become a member of the Fleetwood Travelcade Club. It's the perfect way to meet other Fleetwood owners who love to travel across America and share in the RV lifestyle. Visit our website at [www.fleetwoodrv.com/owners\\_clubs](http://www.fleetwoodrv.com/owners_clubs) to learn more and join the fun.

**RV OWNERCARE**

See your local dealer for complete details.

**IMPORTANT—PLEASE READ**

Product information, photography and illustrations included in this publication were as accurate as possible at the time of printing. For further product information and changes, please visit our website at [www.fleetwoodrv.com](http://www.fleetwoodrv.com) or contact your local Fleetwood dealer. Prices, materials, design and specifications are subject to change without notice. All weights, fuel, liquid capacities and dimensions are approximate. Fleetwood has designed its recreational vehicles to provide a variety of uses for customers. Each vehicle features optimal seating, sleeping, storage and fluid capacities. The user is responsible for selecting the proper combination of loads (i.e.: equipment, fluids, cargo, etc.) to ensure that the vehicle's capacities are not exceeded.

Your Local Fleetwood Dealer is:

**To Our Customers...**

To make sure that you get the maximum satisfaction out of your recreational vehicle purchase, there are several things you should know:

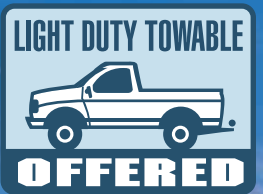
1. Learn all you can about the travel trailer or fifth wheel you're planning to buy. Don't rely on word of mouth. Get the facts about the actual trailer length, width, unloaded weight with options, Gross Vehicle Weight Rating, and Cargo Carrying Capacity. These are usually available in the manufacturer's sales literature or from the Cargo Carrying Capacity Label located in each trailer. Be sure to check this information before you decide which unit to buy.
2. Verify the towing capacity of your tow vehicle. If you don't know, or aren't sure, you can ask at your automotive dealership or contact your tow vehicle manufacturer. Be sure to match your tow vehicle's tow rating to the Gross Vehicle Weight Rating (not dry weight) of the trailer you are considering. To help Fleetwood travel trailer customers estimate this total weight, our Gross Vehicle Weight Ratings reflect the maximum weight of the trailer when fully loaded for camping. Be sure the weight of the tow vehicle plus the Gross Vehicle Weight of your trailer does not exceed the Gross Combined Weight Rating (GCWR) of the tow vehicle.

Taking these simple steps before you buy will help ensure that your trailer and tow vehicle combination is just what you wanted.

See you on the trail!

Get away without leaving it all behind.

**WILDERNESS**



Travel Trailers and Fifth Wheels



Appealing Décors + Functional Floor Plans + Outdoor Lifestyle Comfort  
Name Brands + Laminated Fiberglass Sidewall Construction

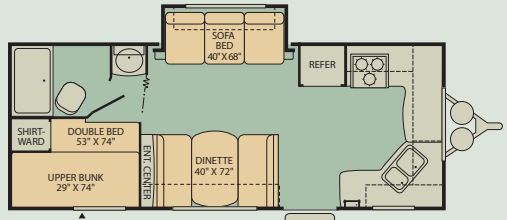


# TRAVEL TRAILERS



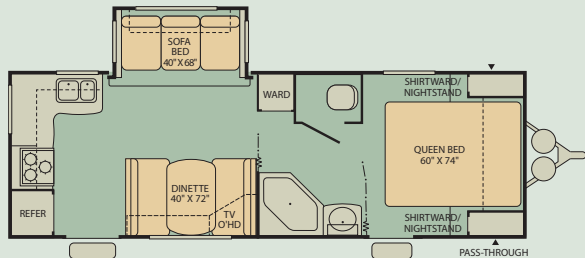
## 210FKS

Single Slide-Out • Sleeps 7\*



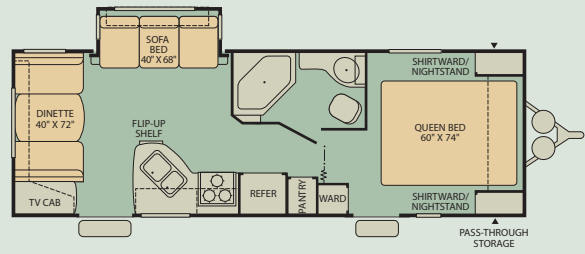
## 240RKS

Single Slide-Out • Sleeps 6\*



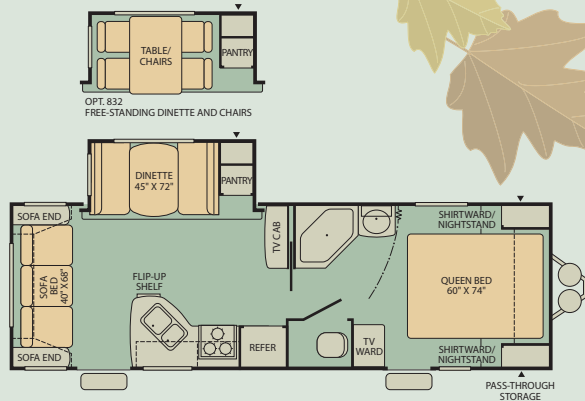
## 250RDS

Single Slide-Out • Sleeps 6\*



## 250RLS

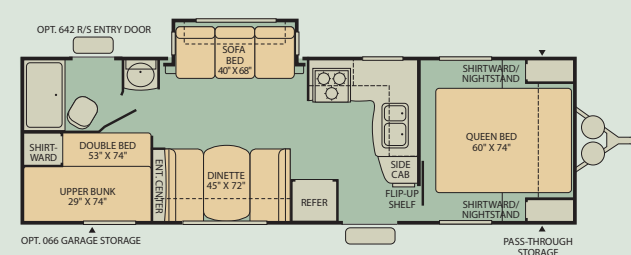
Single Slide-Out • Sleeps 6\*



## WILDERNESS

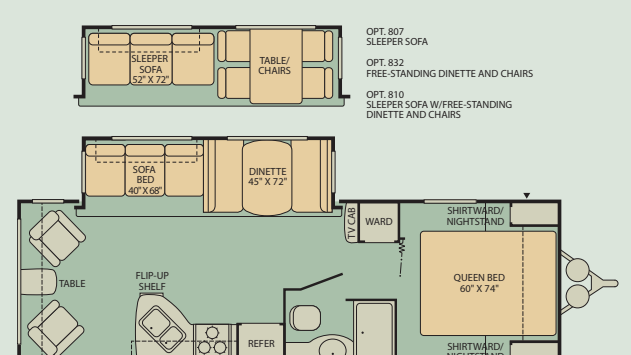
## 260BHS

Single Slide-Out • Sleeps 9\*



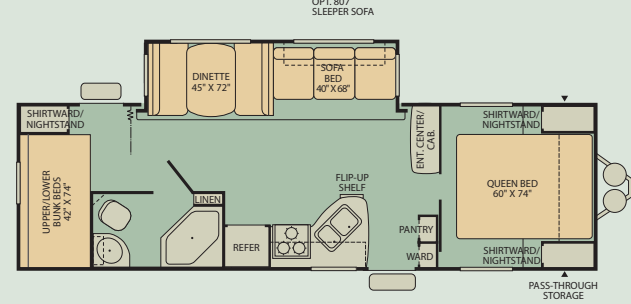
## 260RLS

Single Slide-Out • Sleeps 6\*



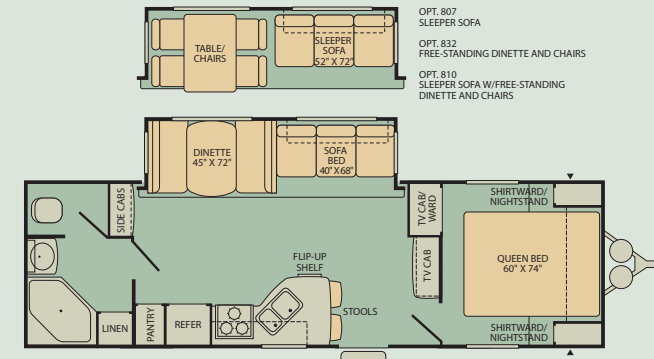
## 270DBHS

Single Slide-Out • Sleeps 8\*



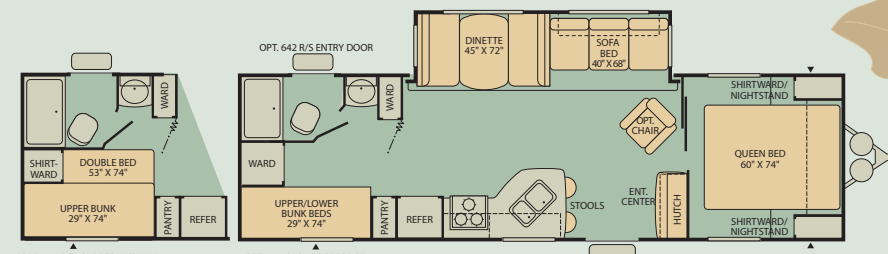
## 270RBS

Single Slide-Out • Sleeps 6\*



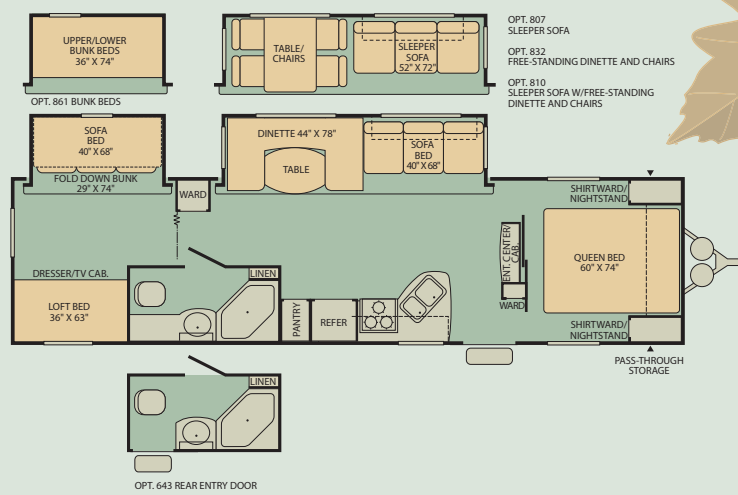
## 280BHS

Single Slide-Out • Sleeps 9\*



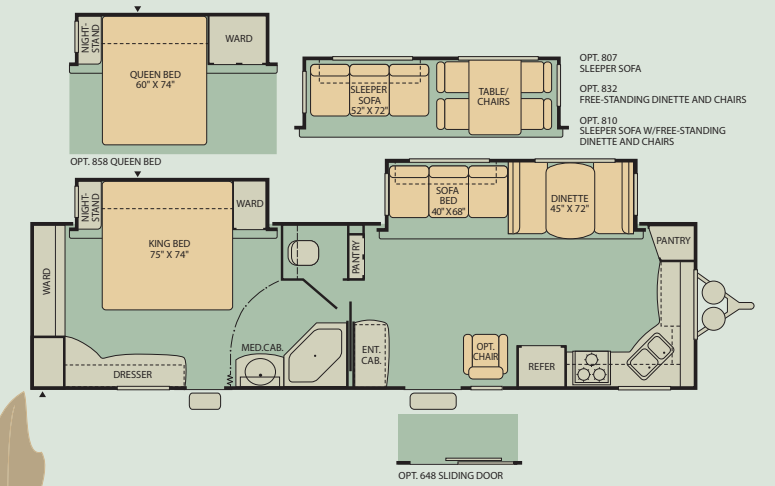
## 3202BDS

Double Slide-Out • Sleeps 6\*



## 330FKDS

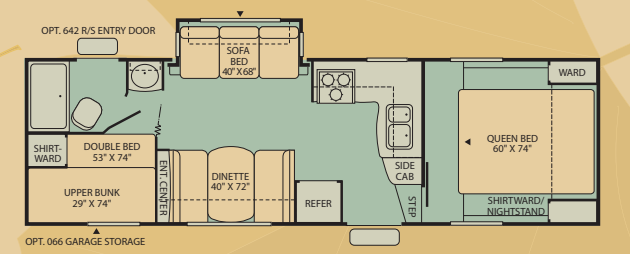
Double Slide-Out • Sleeps 4\*



## FIFTH WHEELS

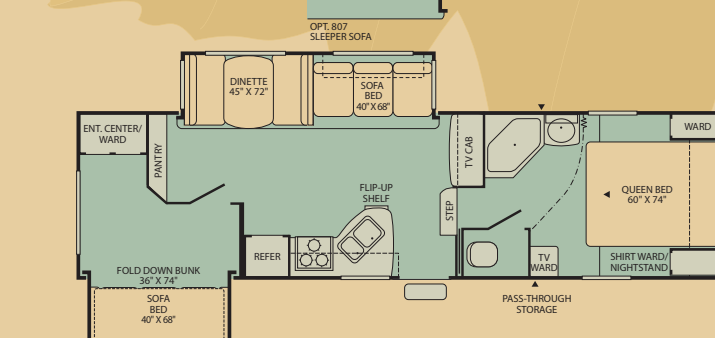
## 265BHS

Single Slide-Out • Sleeps 9\*



## 295BHS

Double Slide-Out • Sleeps 8\*



\* Sleeping capacity is a variable number and is affected by items such as size of occupant, options and floor plan. Some models are not available in all areas of the country. Please see your local dealer for model availability.  
▲ = Exterior Storage

## WILDERNESS FEATURES

STANDARD	OPTIONAL	UPGRADE PACKAGE
<b>INTERIOR THROUGHOUT</b> <ul style="list-style-type: none"> <li>6-Gallon Propane DSI (Direct Spark Ignition) Water Heater</li> <li>AM/FM Stereo/CD Player w/2 Ceiling Mount Speakers</li> <li>Cable TV Hook-Up</li> <li>Free Standing Chairs (260RLS)</li> <li>Hydro Flame™ Forced Air, Direct Spark Ignition Furnace w/Thermostat</li> <li>Mortise &amp; Tenon Cathedral Arched Flat Panel Cabinet Doors</li> <li>Oversized Light Switches</li> <li>Satellite Ready</li> <li>Slide-Out End Wall Windows</li> <li>Solid State Converter w/Built-In Battery Charger</li> <li>Wall Mount 12V Decor Light (Slide-Out Models)</li> <li>Water Heater Bypass</li> <li>Upgrade Plank Style Vinyl Flooring</li> <li>Coat Closet at Entry Door (Select Models)</li> <li>Cup Holders in Living and Bedroom Areas (Most Models)</li> </ul> <b>GALLEY</b> <ul style="list-style-type: none"> <li>12V Dinette Décor Light (Slide-Out Models)</li> <li>3 Galley Drawers (Most Models)</li> <li>60/40 Sink</li> <li>Deluxe Full Extension Roller Bearing Drawer Guides</li> <li>Double Door Propane/Electric Refrigerator</li> <li>Flip-Up Galley Extension (Most Models)</li> <li>3-Burner Range w/22" Oven</li> </ul>	<ul style="list-style-type: none"> <li>Metal Hi-Rise Faucet</li> <li>Microwave w/Electronic Touch Pad</li> <li>Pantry</li> <li>Pots &amp; Pans Drawer</li> <li>Range Cover</li> <li>Range Hood w/12V Light &amp; Exhaust Fan</li> <li>Residential Height Countertops</li> </ul> <b>BEDROOM</b> <ul style="list-style-type: none"> <li>350 lb. Fixed Bunk Weight Rating</li> <li>150 lb. Weight Rating for Combo Bunks</li> <li>Bedroom Carpet (Fifth Wheels)</li> <li>Built-In Bedroom TV Viewing Area</li> <li>Innerspring Mattress</li> <li>Lift-Up Bed Platform Storage (Most Models)</li> <li>Residential Size Wardrobe</li> </ul> <b>BATHROOM</b> <ul style="list-style-type: none"> <li>12V Power Exhaust Roof Vent</li> <li>ABS Tub/Shower Enclosure</li> <li>Medicine Cabinet w/Mirrored Door</li> <li>Porcelain Toilet</li> <li>Raised 6 Panel Bath Door</li> <li>Wall-Switched Ceiling Light</li> </ul> <b>SAFETY/CONVENIENCE</b> <ul style="list-style-type: none"> <li>120V GFI Circuit Protection (Galley/Bath/Patio)</li> <li>4-Wheel Electric Brakes</li> <li>Break-Away Emergency Disconnect Brake</li> <li>Carbon Monoxide Detector/Alarm</li> <li>Entry Assist Handle</li> <li>Fire Extinguisher</li> <li>Propane Detector/Alarm</li> </ul>	<ul style="list-style-type: none"> <li>Smoke Detector/Alarm</li> <li>Wall Mounted Systems Monitor Panel</li> <li>Water System Winterization Port</li> <li>Centralized Control Center</li> </ul> <b>EXTERIOR THROUGHOUT</b> <ul style="list-style-type: none"> <li>120V Patio Receptacle</li> <li>30" Radius Entry Door (except 270DBHS)</li> <li>Dual 30 lb. Propane Cylinders w/Regulator &amp; Auto-Changeover</li> <li>Extended Pin Box &amp; Power Landing Gear (Fifth Wheels)</li> <li>Fiberglass (Gel Coat) Sidewalls</li> <li>ABS Front Cap (Fifth wheels)</li> <li>Tinted Safety Glass Windows</li> <li>Front &amp; Rear Colored Skirt End Caps</li> <li>Heated &amp; Enclosed Water Tank</li> <li>Hitch Light</li> <li>Laminated Sidewalls</li> <li>Molded Wheel Well Skirts (Color Coordinated to Match Radius Skirt)</li> <li>Patio Awning</li> <li>Quick Drain Holding Tank (Fresh Water)</li> <li>Radius Truss Roof Rafters</li> <li>Satellite Jacks</li> <li>Split Tank Propane System (Fifth Wheels)</li> <li>Stabilizer Jacks</li> <li>TV Antenna</li> <li>Welded Dual Battery Rack (Travel Trailers Only)</li> </ul> <b>BODY STRUCTURE</b> <ul style="list-style-type: none"> <li>Cambered Chassis</li> <li>Fiberglass Exterior</li> </ul>

## WILDERNESS INTERIOR DECOR CHOICES



### WOOD CHOICES



## WILDERNESS CONSTRUCTION



Drawing is for illustrative purposes only to highlight aspects of Wilderness construction. Actual RV design depends on the model and is subject to change.

- ENGINEERED RADIUS CEILING TRUSS** - Helps to ensure strength, water runoff and reduced weight.
- IN-CEILING AIR CONDITIONING DUCT** - Better distributes cool air.
- ONE-PIECE SEAMLESS SYNTHETIC RUBBER ROOF MEMBRANE** - Provides the ideal weather seal and is warranted for 12 years.
- INTERIOR WALL PANEL** - Features a durable, easy to clean, decorative vinyl.
- DURABLE VINYL FLOORING** - Durable, easy to clean from the best name in residential flooring.
- REINFORCED CAMBERED STEEL CHASSIS** - Provides optimal strength, durability and towing-performance.
- SMOOTH GLOSS FIBERGLASS EXTERIOR SIDING** - This glossy surface is easy to clean and adds beauty and structural integrity.
- AVAILABLE ENCLOSED CHASSIS** - Is a durable weather barrier.
- 2" X 3" FLOOR JOIST** - Allows for the placement of in-floor furnace ducting without compromising structural integrity.
- AVAILABLE MOLDED FRONT CAP** - Improved aerodynamics and styling.

## WILDERNESS WEIGHTS & MEASUREMENTS

WEIGHTS	WILDERNESS TRAVEL TRAILERS											FIFTH WHEELS	
	210FKS	240RKS	250RDS	250RLS	260BHS	260RLS	270DBHS	270RBS	280BHS	3202BDS	330FKDS	265BHS	295BHS
GVWR (lbs) <sup>1</sup>	6,500	7,100	7,100	7,500	7,500	7,900	8,500	8,500	9,000	10,000	10,000	9,000	11,400
Gross Dry Weight (lbs) <sup>2-6</sup>	5,098	5,440	5,603	5,953	5,842	6,139	6,248	6,381	6,456	7,533	7,608	6,839	8,313
Cargo Carrying Capacity (lbs) <sup>3-6</sup>	1,402	1,660	1,497	1,547	1,658	1,761	2,252	2,119	2,544	2,467	2,392	2,161	3,087
Hitch Dry Weight (lbs) <sup>2-6,9</sup>	781	790	743	839	851	770	665	635	880	1,135	1,178	1,167	1,552
DIMENSIONS & CAPACITIES													
Length (Feet & Inches) <sup>4,6,8</sup>	24' 0"	27' 8"	27' 6"	28' 11"	29' 9"	28' 11"	30' 9"	30' 9"	32' 0"	35' 2"	34' 10"	29' 5"	32' 10"
Height (Feet & Inches) <sup>5,6</sup>	10' 9"	10' 9"	10' 9"	10' 9"	10' 10"	10' 10"	10' 10"	10' 10"	10' 10"	11' 0"	11' 0"	12' 4"	12' 3"
Fresh Water Holding Tank (gal) <sup>6,7</sup>	50	50	50	50	50	50	50	50	50	50	50	50	50
Grey Water Holding Tank (gal) <sup>6,7</sup>	40/40	40	40	40	40/40	40	40	40	40	40	40/21	40/40	40/40
Black Water Holding Tank (gal) <sup>6,7</sup>	40	40	40	40	40	40	40	40	40	40	40	40	40
Propane Capacity (lbs) <sup>6,7</sup>	60	60	60	60	60	60	60	60	60	60	60	60	60
Tire Size (Load Range)	ST205/75 15C	ST205/75 15C	ST205/75 15C	ST205/75 15C	ST225/75 15D	ST225/75 15D	ST225/75 15D	ST225/75 15D	ST225/75 15D	ST225/75 15D	ST225/75 15D	ST225/75 15D	ST225/75 15D

- GVWR (Gross Vehicle Weight Rating) is the maximum permissible weight of this trailer when fully loaded. It includes all weight at the trailer axle(s) and tongue or pin.
- All dry weights are based on the standard model and do not include optional features or equipment.
- Cargo Carrying Capacity is determined by subtracting Gross Dry Weight from GVWR. Cargo includes all fluids, optional features, equipment, and personal cargo.
- Length is measured from hitch or pin box to rear bumper (excludes accessories). Trailer length includes hitch; fifth wheel includes standard pin box.
- Actual height may be lower, based on option offerings. Consult with your dealer to obtain actual height for the unit you are interested in.
- Approximate.
- Water weight equals 8.3 lbs per gallon. Propane weight equals 4.2 lbs per gallon.
- Add 10" if equipped with optional spare tire and carrier.
- Hitch weights are dependent upon how the trailer is equipped with options, on-board cargo, and tank fluid levels. Actual hitch weights may be higher or lower than shown. It is recommended that the tow

vehicle and hitch for your trailer have sufficient capacity to accommodate the Gross Vehicle Weight Rating of the selected trailer.

N/A = Not available at the time of printing.

**IMPORTANT— PLEASE READ:** Product information, photography and illustrations included in this publication were as accurate as possible at the time of printing. For further product information and changes, please visit our website at [www.fleetwoodrv.com](http://www.fleetwoodrv.com) or contact your local Fleetwood dealer. Prices, materials, design and specifications are subject to change without notice. All weights, fuel, liquid capacities and dimensions are approximate. Fleetwood has designed its recreational vehicles to provide a variety of uses for customers. Each vehicle features optimal seating, sleeping, storage and fluid capacities. The user is responsible for selecting the proper combination of loads (i.e., equipment, fluids, cargo, etc.) to ensure that the vehicle's capacities are not exceeded.