

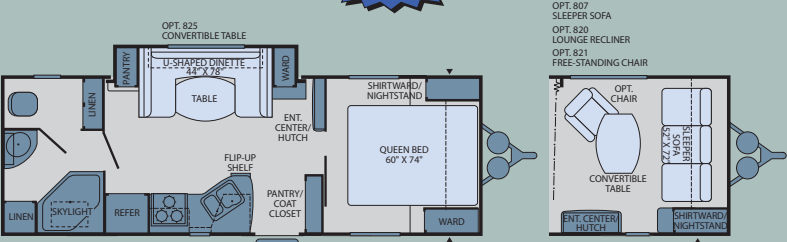
PROWLER TRAVEL TRAILERS



FIFTH WHEELS

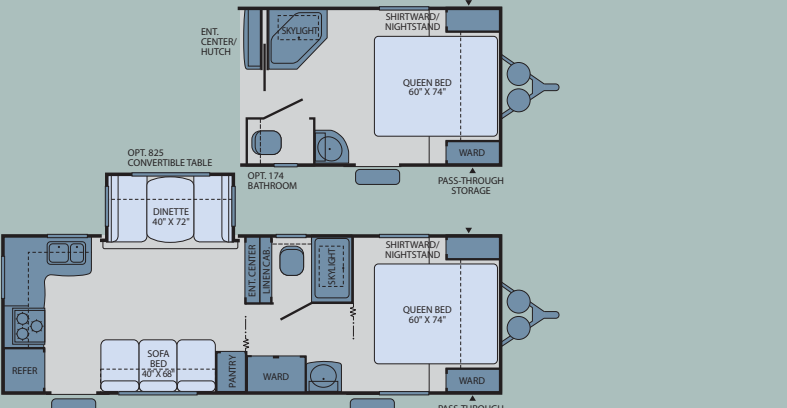
220FBS

Single Slide-Out • Sleeps 6*



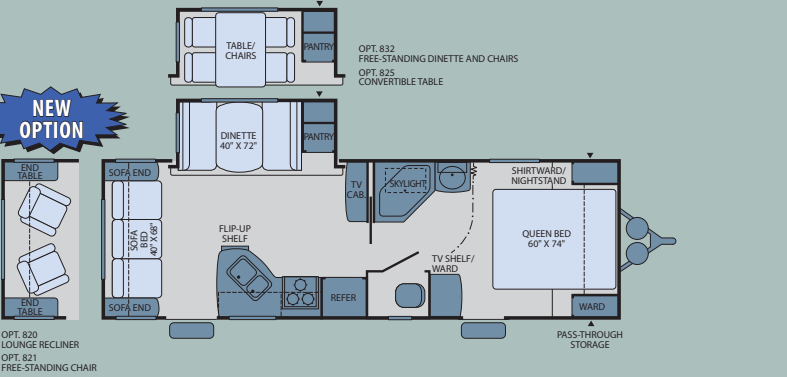
230RKS

Single Slide-Out • Sleeps 6*



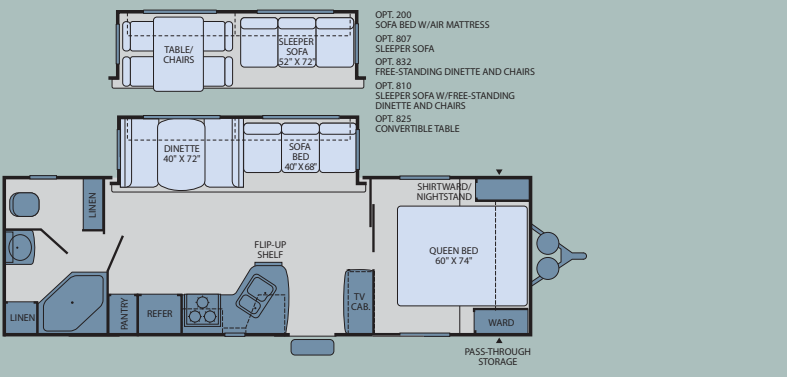
250CKS

Single Slide-Out • Sleeps 6*



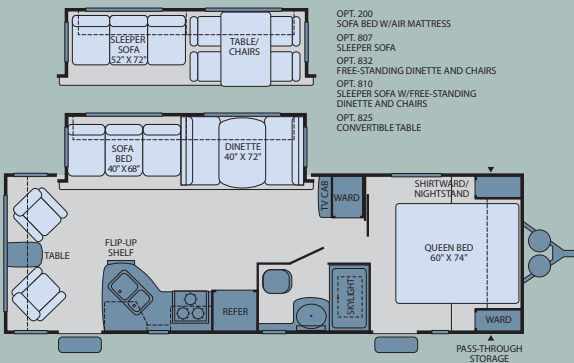
250RBS

Single Slide-Out • Sleeps 6*



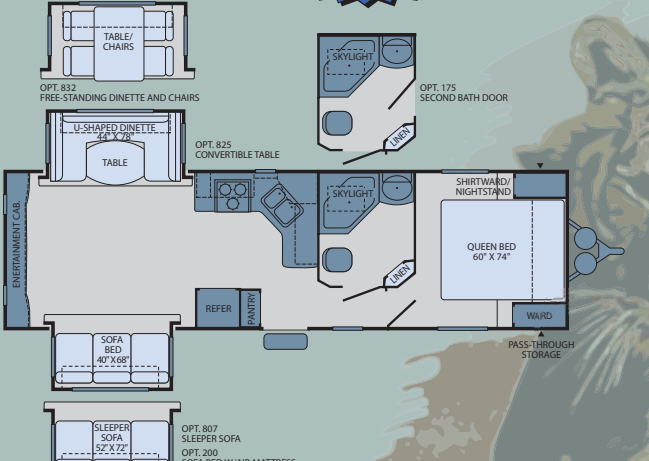
250RLS

Single Slide-Out • Sleeps 6*



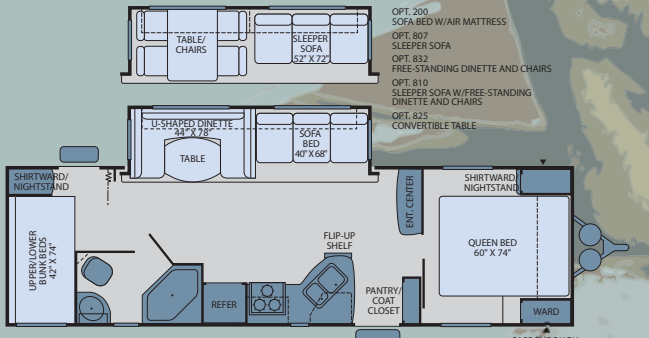
270RLDS

Double Slide-Out • Sleeps 6*



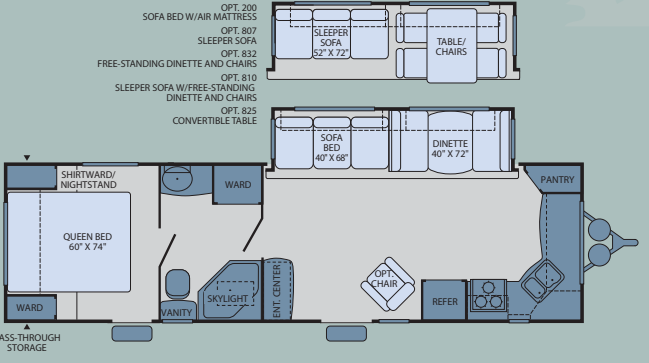
2702BS

Single Slide-Out • Sleeps 8*



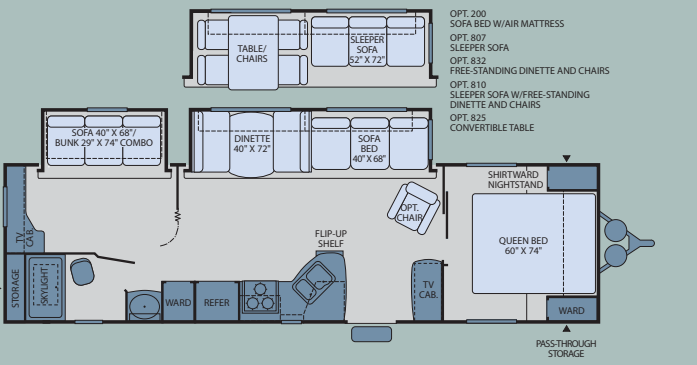
280FKS

Single Slide-Out • Sleeps 6*



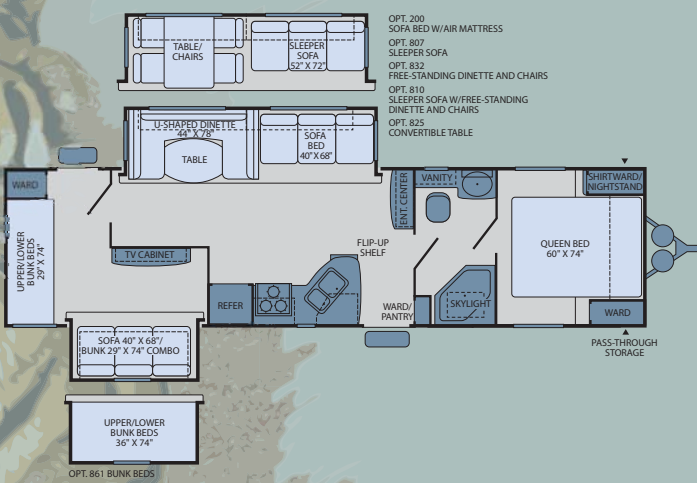
2802BDS

Double Slide-Out • Sleeps 8*



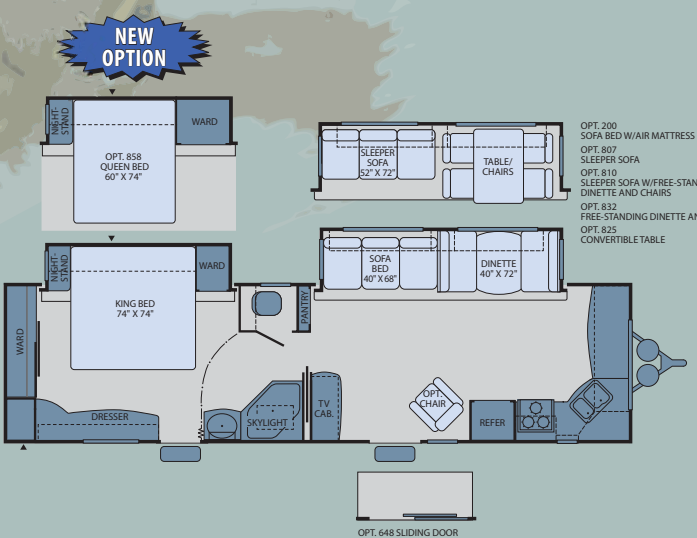
320CKDS

Double Slide-Out • Sleeps 10*



320FKDS

Double Slide-Out • Sleeps 6*

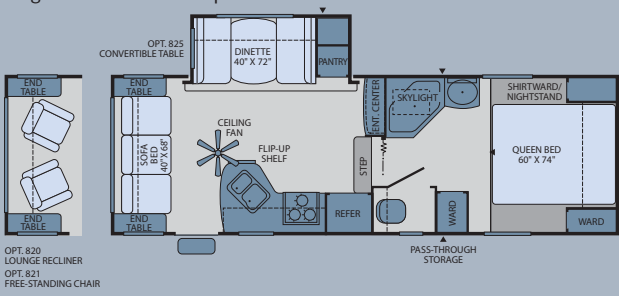


* Sleeping capacity is a variable number and is affected by items such as size of occupant, options and floor plan. Some models are not available in all areas of the country. Please see your local dealer for model availability.

▲ = Exterior Storage

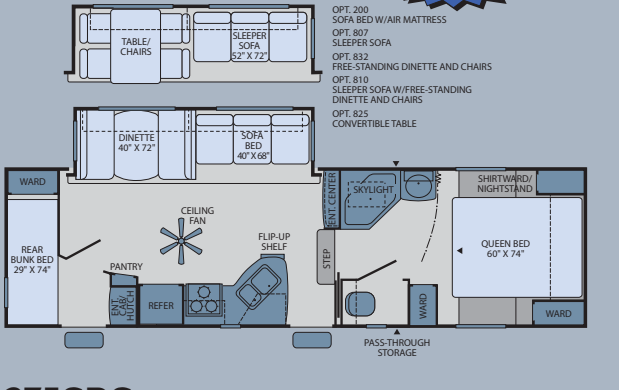
235RLS

Single Slide-Out • Sleeps 6*



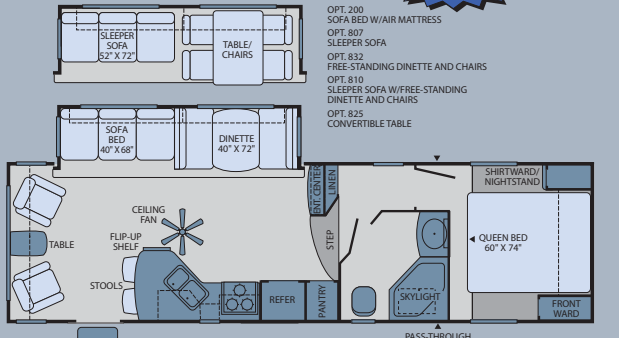
275BHS

Single Slide-Out • Sleeps 6*



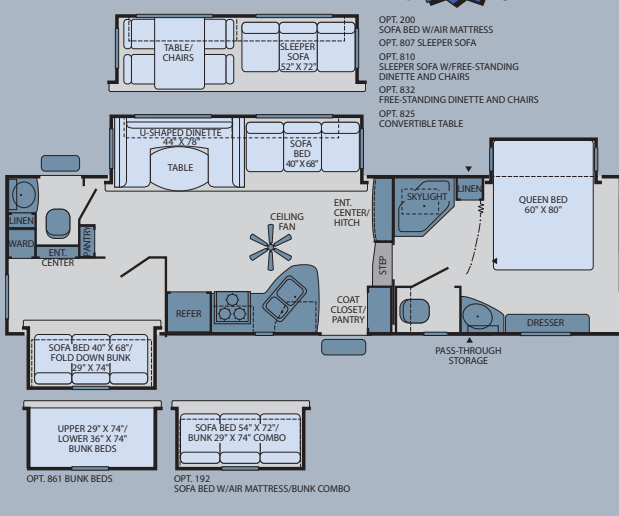
275SBS

Single Slide-Out • Sleeps 6*



3052BTS

Triple Slide-Out • Sleeps 9*



PROWLER FEATURES

- STANDARD**
- INTERIOR THROUGHOUT**
- AM/FM Stereo/CD Player w/6 Surround Sound Ceiling Mount Speakers & Sub Woofer
 - Hydro Flame® Forced Air, Direct Spark Ignition Furnace w/Thermostat
 - Ventilated Slide-Out End Wall Windows
 - Solid State Converter w/Built-In Battery Charger
 - Ceiling Mount 12V Decor Light (Slide-Out Models)
 - Water Heater Bypass
 - 6-Gallon Propane/110V DSI (Direct Spark Ignition) Water Heater
 - Whole Coach Water Filtration
 - Aluminum Framing in Dinette and Bed Frame
 - Built in Magazine Rack
 - Reversible Dinette Seat Cushions
 - Swivel Reading Lights Over Sofa
 - Hardwood Mortise and Tenon Cabinet Doors and Drawer Fronts
 - Raised Panel Overhead Cabinet Doors
 - Coat Closet at Entry Door (Select Models)
 - Sofa Throw Pillows
 - Centralized Control Panel
- GALLEY**
- Deluxe Pullout Galley Storage System
 - 60/40 Sink
 - Deluxe Full Extension Roller Bearing Drawer Guides
- Double Door Propane/Electric Refrigerator
- Dual Sink Covers/Cutting Board
- 3-Burner Range w/16" Oven
- Metal Hi-Rise Faucet
- Microwave w/Electronic Touch Pad
- Pantry
- Pots & Pans Drawer
- Range Hood w/12V Light & Exhaust Fan
- Upgraded Vinyl Flooring
- Flip-Up Counter Extension (Most Models)
- Range Cover
- BEDROOM**
- Custom Headboard
 - Innerspring Mattress
 - Pillow Shams
 - Residential Size Wardrobe
 - Strut Assisted Lift-Up Bed Platform w/Below Bed Storage (Most Models)
 - Swivel Reading Lights
 - Laundry Chute w/Basket (5th Wheels)
- BATHROOM**
- 12V Power Comfort Air™ Bath Vent
 - ABS Tub/Shower Enclosure
 - Deluxe Adjustable Shower Head
 - Bathroom Skylight
 - Medicine Cabinet w/Mirrored Door
 - Porcelain Toilet
 - Wall-Switched Ceiling Light
 - Raised 6 Panel Bath Door
 - Bathroom Window w/Blind
- SAFETY/CONVENIENCE**
- 120V GFI Circuit Protection (Galley/Bath/Patio)

- 4-Wheel Electric Brakes
- Break-Away Emergency Disconnect Brake
- Carbon Monoxide Detector/Alarm
- Large Lend-a-Hand Entry Assist Handle
- Fire Extinguisher
- Propane Detector/Alarm
- Smoke Detector/Alarm
- Wall Mounted Systems Monitor Panel
- EXTERIOR THROUGHOUT**
- 120V Patio Receptacle
 - 26" Radius Entry Door
 - Dual 30 lb. Propane Cylinders w/Regulator & Auto-Changeover
 - Extended Pin Box & Power Landing Gear (Fifth Wheels)
 - Fiberglass Exterior Sidewalls
 - Front & Rear Colored Skirt End Caps
 - Hitch Light
 - Laminated Sidewalls
 - Molded Wheel Well Skirts (Color Coordinated to Match Radius Skirt)
 - Radius Truss Roof Rafter
 - Rear Bumper w/Sewer Hose Carrier
 - Split Tank Propane System (Fifth Wheels)
 - Welded Double Battery Rack (Travel Trailers)
 - Exterior Shower
 - Patio Awning
 - Security Light
 - Stabilizer Jacks
 - Tinted Safety Glass Windows
 - TV Antenna
- Joy Ride Rubberized Suspension
- ABS Front Cap (5th Wheels)
- BODY STRUCTURE**
- Cambered Chassis
 - I-Beam Main Rails
 - 5-side Aluminum Frame Construction
 - One-Piece Seamless Rubber Roof
 - Finished Luggage Door Openings
 - Lined Luggage Compartments w/Lights
- COMFORT PACKAGE**
- Ceiling Fan (Fifth Wheels)
 - 13,500 Btu Air Conditioner
 - Upgrade Innerspring Mattress
 - Enclosed Chassis w/Heated Tanks
 - Winterization Valve
 - Day/Night Shades - Living Room
 - Night Shades - Bedroom
 - Atwood 6 Gal. High Efficiency Gas/Electric Water Heater w/Maximum Recovery Rate of 17.8 Gal. Per Hr.
- LUXURY PACKAGE**
- Power Landing Gear (Fifth Wheels)
 - Black Tank Flush System
 - Exterior Speakers
 - Maxi-Store Luggage Doors
 - Recessed Halogen Ceiling Lights in Living Room, Galley and Dining Room
 - Glass Shower Enclosure
 - 26" LCD TV w/DVD

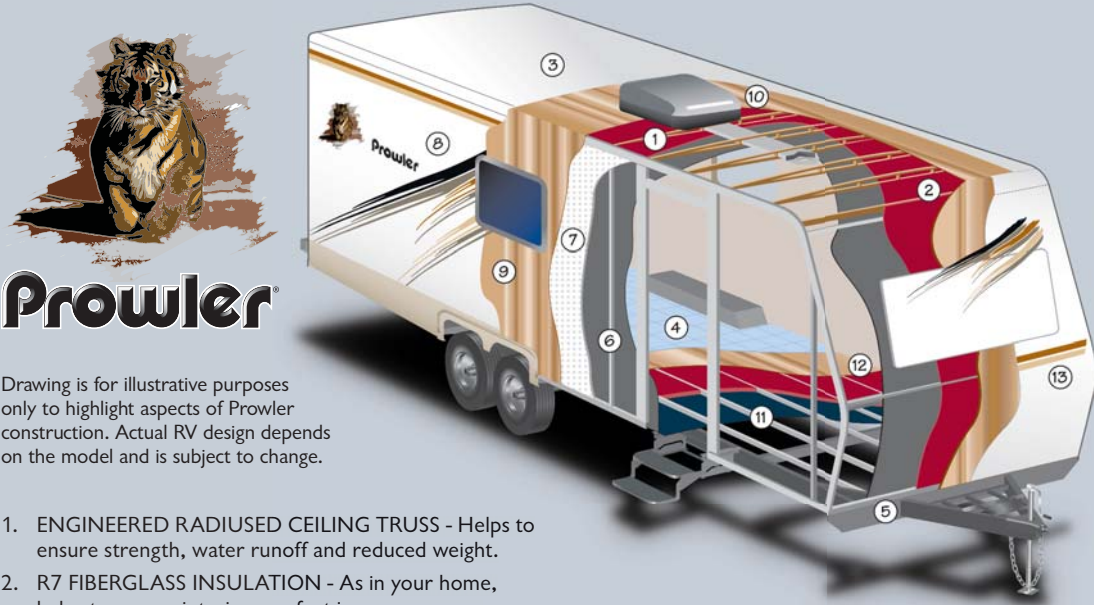
OPTIONAL

- INTERIOR THROUGHOUT**
- Sleeper Sofa
 - Sleeper Sofa w/Air Mattress
 - Free Standing Dinette
 - Raised Panel Refrigerator Insert (6 Panel)
 - Free Standing Chair (Most Models)
 - Stainless Steel Appliances
 - Large 8 Cu. Ft. Double Door Refrigerator
 - Lounge Recliner
 - Convertible Table
 - Living Room Carpet (Most Models)
 - Bedroom Carpet (Most Models)
 - 32" LCD TV w/DVD (270RLDS)
 - Bedroom TV w/DVD
- EXTERIOR THROUGHOUT**
- Extreme Edition Package (Double Thickness Insulation in Floor & Ceiling w/Astro-Foil™ in Slide Floor & Around Holding Tanks)
 - Roof Ladder
 - Front ABS Cap (Travel Trailers)
 - Slide-Out Awning Toppers
 - Dual Pane Windows
 - Aluminum Wheels
 - 15,000 Btu Air Conditioner
 - Front Gravel Cover (Travel Trailers)
 - Upgrade Radial Tires
 - Spare Tire w/Cover
 - Electric Awning
 - Electric Tongue Jack
 - Chrome Trim Ring and Dust Cover
- STORAGE**
- Exterior Garage Storage (Select Models)

INTERIOR DÉCOR CHOICES



PROWLER CONSTRUCTION



- ENGINEERED RADIUS CEILING TRUSS - Helps to ensure strength, water runoff and reduced weight.
- R7 FIBERGLASS INSULATION - As in your home, helps to ensure interior comfort in every season.
- ONE-PIECE SEAMLESS SYNTHETIC ROOF MEMBRANE - Provides the ideal weather seal and is warranted for 12 years.
- DURABLE VINYL FLOORING - Durable, easy to clean, from the best name in residential flooring.
- REINFORCED CAMBERED STEEL CHASSIS - Provides optimal strength, durability, and towing performance.
- 1 1/2" ALUMINUM TUBING - Lightweight, structural studs blend proven framing methods with technologically superior materials.
- HIGH-DENSITY BLOCK FOAM INSULATION - Is custom cut to ensure maximum structure and insulation value.
- SMOOTH GLOSS FIBERGLASS EXTERIOR SIDING - This glossy surface is easy-to-clean and adds beauty and structural integrity.

- WOOD SUBSTRATE - Adds structural reinforcement to the exterior fiberglass panel.
- OSB ENGINEERED ROOF SUBSTRATE - Is designed to maximize strength, is sealed to provide moisture resistance and provides a solid backbone for the rubber roof construction.
- 2" x 3" FLOOR JOIST - Allows for the placement of in-floor furnace ducting without compromising structural integrity.
- ENGINEERED 5/8" OSB FLOORING - Provides the dependable decking needed to ensure an adequate foundation. Further stability is added by interlocking these sheets using "tongue and groove" construction.
- AVAILABLE MOLDED FRONT CAP - Improved aerodynamics and styling.

WEIGHTS & MEASUREMENTS

PROWLER TRAVEL TRAILERS												FIFTH WHEELS			
WEIGHTS	220FBS	230RKS	250CKS	250RBS	250RLS	270RLDS	2702BS	280FKS	2802BDS	320CKDS	320FKDS	235RLS	275BHS	275SBS	3052BTS
GVWR (lbs) ¹	7,400	7,500	7,550	7,600	7,600	8,500	8,300	7,800	8,600	9,500	9,300	8,000	9,200	9,000	N/A
Gross Dry Weight (lbs) ^{2,6}	N/A	5,658	5,658	6,124	5,748	6,793	6,456	6,456	6,945	N/A	7,625	6,333	7,643	7,426	N/A
Cargo Carrying Capacity (lbs) ^{3,6}	N/A	1,842	1,892	1,476	1,852	1,707	1,844	1,344	1,655	N/A	1,675	1,667	1,557	1,574	N/A
Hitch Dry Weight (lbs) ^{2,6,9}	N/A	730	668	709	693	878	676	984	824	N/A	996	1,394	1,541	1,669	N/A
DIMENSIONS & CAPACITIES															
Length (Feet & Inches) ^{4,6,8}	27' 9"	28' 9"	29' 8"	30' 2"	29' 8"	31' 11"	32' 4"	32' 8"	33' 6"	35' 10"	35' 1"	27' 2"	31' 2"	31' 5"	34' 11"
Height (Feet & Inches) ^{5,6}	10' 7"	10' 9"	10' 9"	10' 9"	10' 9"	10' 10"	10' 10"	10' 9"	10' 10"	10' 10"	10' 10"	12' 4"	12' 5"	12' 6"	12' 6"
Fresh Water Holding Tank (gal) ^{6,7}	40	40	40	40	40	40	40	40	40	50	50	40	40	40	50
Grey Water Holding Tank(s) (gal) ^{6,7}	30	30/30	40	40	40	40	40	30/30	40	40/30	40/21	40	40/30	40	30/30
Black Water Holding Tank(s) (gal) ^{6,7}	30	30	30	30	30	30	30	30	30	30	40	30	30	30	30/30
Propane Capacity (lbs) ^{6,7}	60	60	60	60	60	60	60	60	60	60	60	60	60	60	60
Tire Size (Load Range)	ST205/ 75 15C	ST205/ 75 15C	ST205/ 75 15C	ST205/ 75 15C	ST205/ 75 15C	ST225/ 75 15D	ST225/ 75 15D	ST205/ 75 15C	ST225/ 75 15D	ST225/ 75 15D	ST225/ 75 15D	ST205/ 75 15C	ST225/ 75 15D	ST225/ 75 15D	ST225/ 75 15D

- GVWR (Gross Vehicle Weight Rating) is the maximum permissible weight of this trailer when fully loaded. It includes all weight at the trailer axle(s) and tongue or pin.
- All dry weights are based on the standard model and do not include optional features or equipment.
- Cargo Carrying Capacity is determined by subtracting Gross Dry Weight from GVWR. Cargo includes all fluids, optional features, equipment, and personal cargo.
- Length is measured from hitch or pin box to rear bumper (excludes accessories). Trailer length includes hitch; fifth wheel includes standard pin box.
- Actual height may be lower, based on option offerings. Consult with your dealer to obtain actual height for the unit you are interested in.
- Approximate.
- Water weight equals 8.3 lbs per gallon. Propane weight equals 4.2 lbs per gallon.
- Add 10" if equipped with optional spare tire and carrier.

- Hitch weights are dependant upon how the trailer is equipped with options, on-board cargo, and tank fluid levels. Actual hitch weights may be higher or lower than shown. It is recommended that the tow vehicle and hitch for your trailer have sufficient capacity to accommodate the Gross Vehicle Weight Rating of the selected trailer.

N/A = Not available at the time of printing.

IMPORTANT— PLEASE READ: Product information, photography and illustrations included in this publication were as accurate as possible at the time of printing. For further product information and changes, please visit our website at www.fleetwoodrv.com or contact your local Fleetwood dealer. Prices, materials, design and specifications are subject to change without notice. All weights, fuel, liquid capacities and dimensions are approximate. Fleetwood has designed its recreational vehicles to provide a variety of uses for customers. Each vehicle features optimal seating, sleeping, storage and fluid capacities. The user is responsible for selecting the proper combination of loads (i.e., equipment, fluids, cargo, etc.) to ensure that the vehicle's capacities are not exceeded.



The Bathroom includes a bath window (most models), glass shower enclosure and Comfort Air™ bath vent standard. Kids and parents agree the skylight above the shower/tub makes bath time lots of fun.



The Entertainment Center with available LCD TV and DVD Player with iPod plug-in and charging station lets you enjoy a movie when it's time to wind down for the night.



Bunk Beds add to the available sleeping space, while increasing the fun-factor twofold for the kid in all of us! If there's just one camper, use one bunk to store extra gear.

The Wardrobe designed to hold full-size hangers, keeps your clothes neat and clean.



The Master Bedroom feels just as relaxing as yours at home. After a long day at the river, you can float away on the queen bed with upgrade innerspring mattress.



The Sofa Bed with the optional air mattress makes it okay to fall asleep on the couch. All it takes is a push of a button and you'll be relaxing in bed before you know it.

WHATEVER THE TERRAIN, YOU'LL ALWAYS BE ON HOME TURF.
We understand. You've put in a lot of work to get your home just the way you want it. So you hate to leave it all behind when you go camping. The solution: Prowler. It offers the best of both worlds: spacious floor plans and luxury features on the inside, lightweight construction and rugged durability on the outside. The Prowler feels so much like home, you'd expect to find a mailbox with your name on it out front.



The Dinette provides a comfortable place to enjoy Nana's famous chili or family game night.



The Full Extension Drawer is the perfect place to store pots and pans.



The Gallery contains design details that make cooking away from home a joy. A pull-out galley storage drawer with full extension roller bearing guides, a double door refrigerator, a microwave, and a 3-burner range with 16" oven are standard.

The Living Room brings camping comfort to a new level, with appealing décor and rich fabrics that are surprisingly durable and easy to clean.

2702BS shown in Bamboo interior with Symphony Cherry wood.



Prowler

WHY PROWLER?



QUALITY

There's no cutting corners. Skilled craftsmen build every Fleetwood RV for maximum durability and longevity.



WARRANTY

Exclusive RV Ownercare warranty. See your Fleetwood dealer for details.



PASSION

We're truly passionate about the RV lifestyle. Fleetwood was founded by RV enthusiasts, and that tradition continues today.



SERVICE

Help is nearby. When you need an upgrade or repair, you'll find Fleetwood dealers all across North America to assist you.



TRUST

More people trust Fleetwood. After all, we've spent over 50 years perfecting RVs, earning the loyalty of generations of RVers.

CONTACT US

To locate a dealer near you, visit our website at www.fleetwoodrv.com or call 1-800-444-4905. We can also be contacted at Fleetwood Customer Relations, P.O. Box 1007, Decatur, IN 46733.

FLEETWOOD TRAVELCADE CLUB

As a Fleetwood owner, you're invited to become a member of the Fleetwood Travelcade Club. It's the perfect way to meet other Fleetwood owners who love to travel across America and share in the RV lifestyle. Visit our website at www.fleetwoodrv.com/owners_clubs to learn more and join the fun.

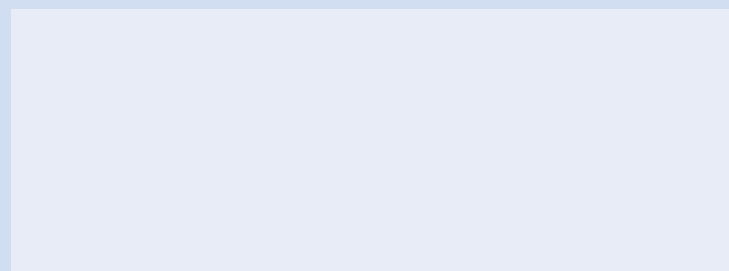
RV OWNERCARE

See your local dealer for complete details.

IMPORTANT—PLEASE READ

Product information, photography and illustrations included in this publication were as accurate as possible at the time of printing. For further product information and changes, please visit our website at www.fleetwoodrv.com or contact your local Fleetwood dealer. Prices, materials, design and specifications are subject to change without notice. All weights, fuel, liquid capacities and dimensions are approximate. Fleetwood has designed its recreational vehicles to provide a variety of uses for customers. Each vehicle features optimal seating, sleeping, storage and fluid capacities. The user is responsible for selecting the proper combination of loads (i.e.: equipment, fluids, cargo, etc.) to ensure that the vehicle's capacities are not exceeded.

Your Local Fleetwood Dealer is:



To Our Customers...

To make sure that you get the maximum satisfaction out of your recreational vehicle purchase, there are several things you should know:

1. Learn all you can about the travel trailer or fifth wheel you're planning to buy. Don't rely on word of mouth. Get the facts about the actual trailer length, width, unloaded weight with options, Gross Vehicle Weight Rating, and Cargo Carrying Capacity. These are usually available in the manufacturer's sales literature or from the Cargo Carrying Capacity Label located in each trailer. Be sure to check this information before you decide which unit to buy.
2. Verify the towing capacity of your tow vehicle. If you don't know, or aren't sure, you can ask at your automotive dealership or contact your tow vehicle manufacturer. Be sure to match your tow vehicle's tow rating to the Gross Vehicle Weight Rating (not dry weight) of the trailer you are considering. To help Fleetwood travel trailer customers estimate this total weight, our Gross Vehicle Weight Ratings reflect the maximum weight of the trailer when fully loaded for camping. Be sure the weight of the tow vehicle plus the Gross Vehicle Weight of your trailer does not exceed the Gross Combined Weight Rating (GCWR) of the tow vehicle.

Taking these simple steps before you buy will help ensure that your trailer and tow vehicle combination is just what you wanted.

See you on the trail!

*Think of it as your
get-out-of-townhouse.*



Travel Trailers
and Fifth Wheels



Prowler

2009 PROWLER

- ▲ Light-Weight Aluminum Framed Construction
- ▲ Laminated Fiberglass Sidewall Construction
- ▲ Functional Floor Plans
- ▲ Appealing Décor
- ▲ Name Brand Appliances

