

Regal™

Camp like the king of the mountain



FUNCTIONAL COMFORT | ABUNDANT STORAGE | SMART DETAILS | ALUMINUM FRAME | RESIDENTIAL UPGRADES



Regal 355SAQS shown in Spa interior with Anderson Walnut wood finish.



*Welcome home.
You may never want to go back.*



The Free-Standing Dinette looks like your dining table at home, and with the pull-out extension, you can seat five for dinner. It's fancy enough for your Thanksgiving feast. The dinette chair seats lift up to reveal handy storage space. Look under the dinette tabletop and you will find additional "secret" storage.





The Living Room features residential upgrades that turn an RV into a home. Upscale features such as overstuffed furniture and decorative lighting are standard. A glowing fireplace, washer/dryer hookups, 27" flat screen TV, and Ultraleather™ furniture are also available. A 32" LCD TV is standard in the 315RKSA. A 37" LCD TV is standard in the 355SAQS and 365TSSA.

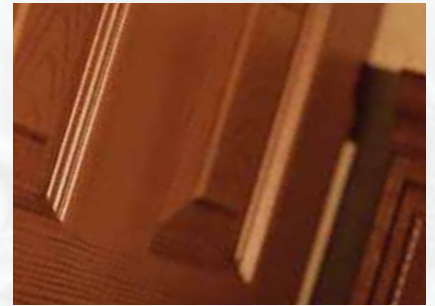


The Galley is loaded with smart details, because it's been designed by seasoned RVers. For example, the deep galley sink includes a pull-out sprayer, sink covers and a water purifier. The galley is also equipped with notable name brands such as Dometic® and Magic Chef®.





The Master Bathroom is spacious enough to hold a marble-finish shower and sink, porcelain toilet, medicine cabinet, and you – with room to spare. The shower with marble-like finish, skylight, and massaging showerhead provides a relaxing escape after your day's adventure.





The Master Bedroom features a comfortable King-size innerspring mattress. Underneath the bed, you will find additional storage space. How appropriate to find a king in a trailer named Regal!

Enjoy the royal treatment in Regal.

The Regal lets you live like royalty wherever you are, with a spacious bedroom suite, large bathroom, and abundant storage. In short, Regal is designed for functional comfort and long-term stays.

Full Extension Wardrobe Drawers are abundant in Regal. Use them to store your favorite jeans and sweaters or extra blankets.



The Full Cedar-lined Wardrobe with shoe rack and light can accommodate enough clothes and shoes for a season spanning vacation.



Bedroom LCD TV is available in select models.

Interior Décor

LIVING ROOM

BEDROOM

Cocoa



Savoy



Spa



Wood Choices



PLANTATION CHERRY



ANDERSON WALNUT

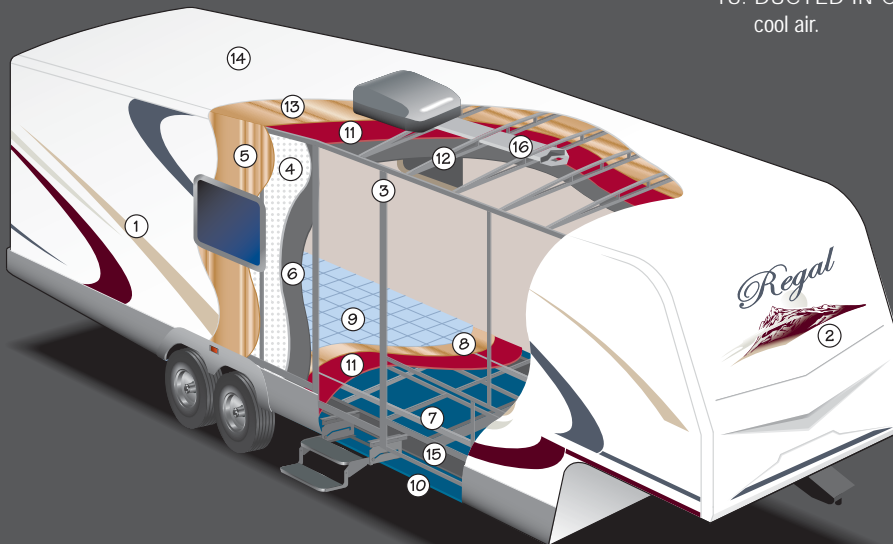


CLEAR OAK

Our claim to fame: The Aluminum Frame.

To create a lightweight but strong skeleton, we used a welded aluminum frame on all four walls and the floor. Coupled with two lamination process, it provides superior sidewalls that are strong, corrosion resistant and lightweight.

1. HIGH GLOSS GEL COATED FIBERGLASS SIDING – This durable and glossy surface is easy to clean, and adds beauty and structural integrity.
2. FIBERGLASS FRONT CAP – Improved aerodynamics and styling.
3. 2" X 2" ALUMINUM SIDEWALL STUDS – Keeps weight down while providing structural integrity to the sidewall.
4. SOLID BLOCK EPS (EXPANDED POLYSTYRENE) INSULATION – Provides strength and durability while helping to ensure interior comfort in every season.
5. WOOD SUBSTRATE – Adds structural reinforcement to the exterior fiberglass siding.
6. INTERIOR WALL PANEL – Features a durable, easy to clean, decorative finish.
7. 2" X 3" ALUMINUM FLOOR JOISTS – Provides a lightweight floor construction without compromising strength while allowing for the placement of in-floor furnace ducting.
8. ENGINEERED 5/8" FLOOR DECK – Provides the dependable decking needed to ensure an adequate foundation. Further stability is added by interlocking these sheets using tongue in groove construction.
9. DURABLE VINYL FLOORING – From the best name in residential flooring.
10. FULLY ENCLOSED CHASSIS – Provides a barrier from ground debris and allows for the holding tanks to be heated.
11. R7 FIBERGLASS INSULATION – As in your home, helps to ensure interior comfort in every season.
12. ENGINEERED RADIUS STEEL CEILING TRUSS – Ensures strength, water runoff and reduced weight from wood structures.
13. ENGINEERED ROOF DECK – Is designed to maximize strength, is sealed to ensure moisture resistance and provides a solid backbone for the rubber roof construction.
14. ARCTIC WHITE SEAMLESS SYNTHETIC ROOF MEMBRANE – Provides the ideal weather seal and is warranted for 12 years.
15. REINFORCED CAMBERED STEEL CHASSIS – Provides optimal strength, durability, and towing performance.
16. DUCTED IN-CEILING AIR CONDITIONING – Efficiently distributes cool air.



Drawing is for illustrative purposes only to highlight aspects of Regal construction. Actual RV design depends on model and is subject to change.



Pass-Through Storage is the place to keep large items like your golf clubs or your wake board.

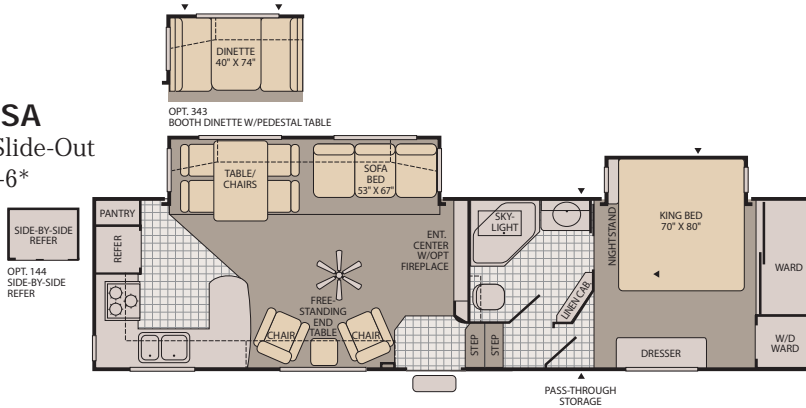


A Fully Enclosed Chassis is available. No need to migrate to warmer climates. The enclosed chassis allows heating the holding tanks to help prevent freezing in colder weather.

Regal Fifth Wheel Floor Plans

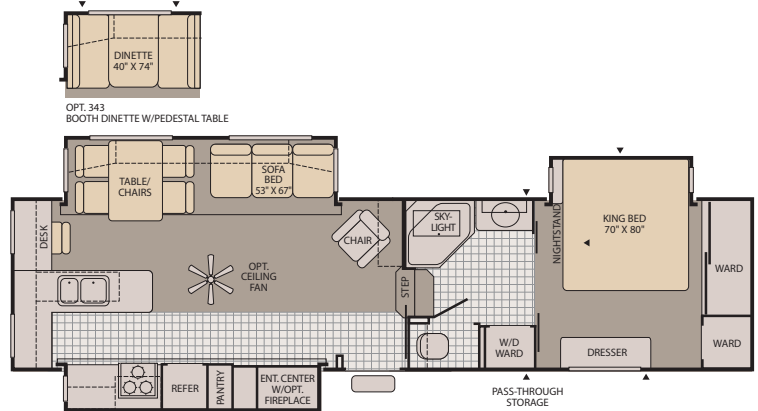
315RKSA

Double Slide-Out
Sleeps 4-6*



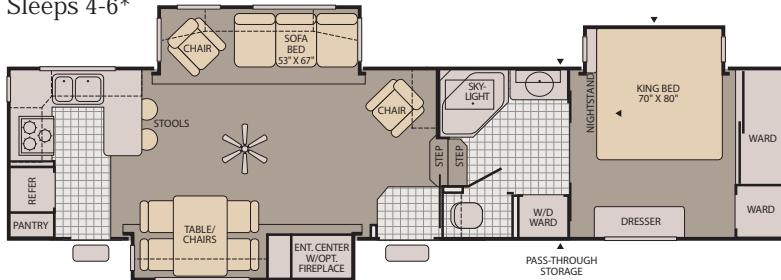
325RKTS

Triple Slide-Out
Sleeps 4-6*



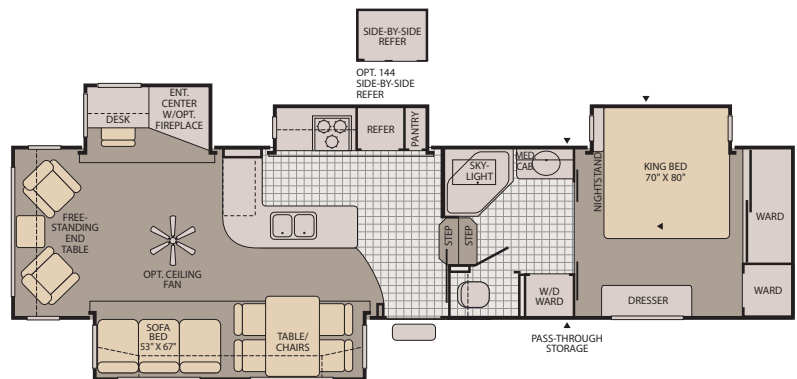
335RKTS

Triple Slide-Out
Sleeps 4-6*



355RLOS

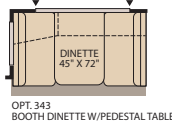
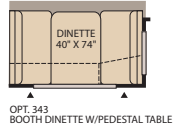
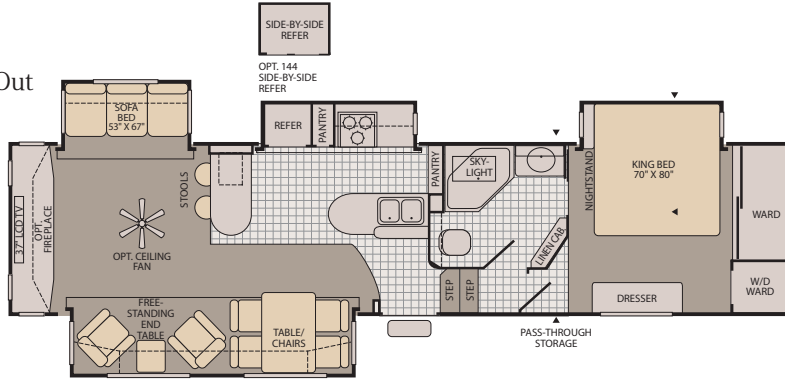
Quad Slide-Out
Sleeps 4-6*



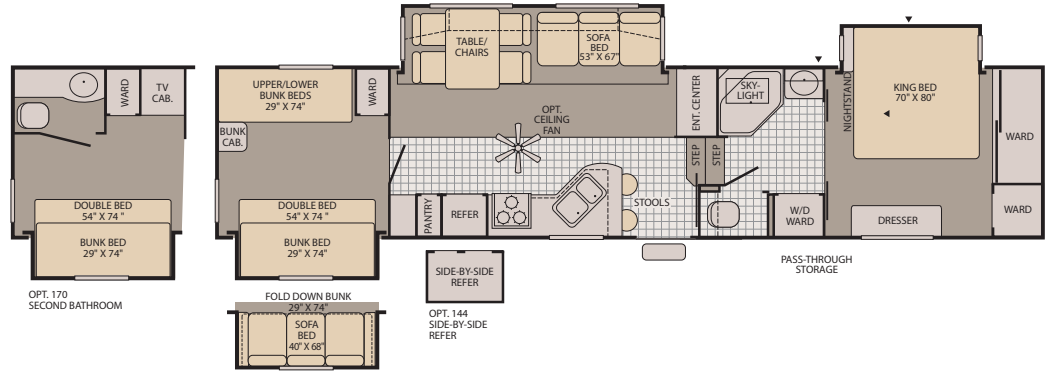
* Sleeping capacity is a variable number and is affected by items such as size of occupant, options and floor plan. Some models are not available in all areas of the country. Please see your local dealer for model availability.

▲ = Exterior Storage

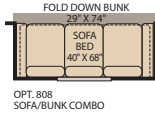
355SAQS
Quad Slide-Out
Sleeps 4-6*



365BHTS
Triple Slide-Out
Sleeps 7-11*

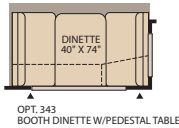
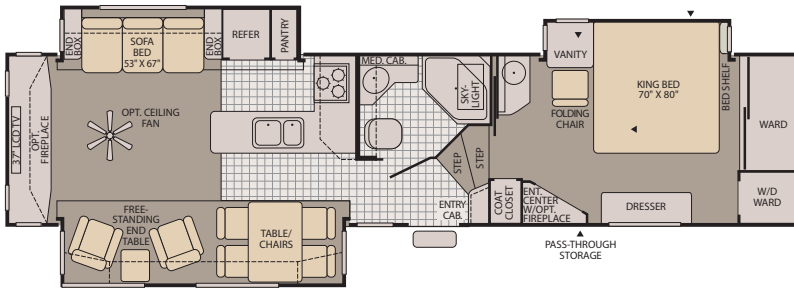


OPT. 170 SECOND BATHROOM

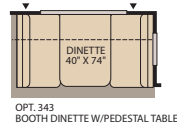


OPT. 144 SIDE-BY-SIDE REFER

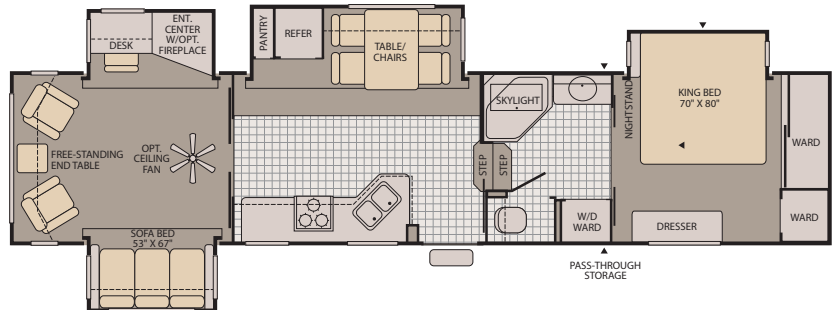
365TSSA
Triple Slide-Out
Sleeps 4-6*



OPT. 144 SIDE-BY-SIDE REFER



375RLQS
Quad Slide-Out
Sleeps 4-6*



PASS-THROUGH STORAGE

Regal Features

Standard Features

INTERIOR - THROUGHOUT

- 15,000 BTU A/C
- AM/FM DVD/CD Home Theater System w/Surround Sound
- Atwood® XT H20T® 10-Gallon LP/ 120V DSI Water Heater w/Bypass
- Atwood® Excalibur XT™ 2-Stage DSI Furnace w/ Digital Thermostat
- Cathedral-Arched Overhead and Base Cabinet Doors
- Two-Tone Day/Night Shades
- Full Extension, Roller Bearing Drawer Guides

LIVING ROOM

- 27" Flat Screen TV
- 32" LCD TV (315RKSA)
- 37" LCD TV (365TSSA & 355SAQS)
- Deluxe Furniture Styling
- Swivel Reading Lights
- 6' 4" Table Slide-Out Boxes

GALLEY

- 12V Fluorescent Lighting
- 8 cu. ft. Dometic® Double Door Propane/ 120V Electric Refrigerator
- Free Standing Chairs w/Storage
- Free Standing Table w/Storage and Extension
- Lazy Susan Turntable (Select Models)
- Solid Surface Galley Countertop w/ Integrated Double Bowl Sink
- Magic Chef® 3-Burner Range w/22" Oven and Cover
- Over-the-Range Microwave w/Electronic Touch Pad
- Pots & Pans Drawer (Select Models)
- Removable Galley Baskets
- Single Lever Faucet w/Pull-out Sprayer
- Sink Covers
- Soap Dispenser
- Tip-Out Sponge Tray (Select Models)
- Water Purifier

BEDROOM

- 6' 6" Bedroom Ceiling Height
- 80" Long King Bed
- Laundry Basket
- Deluxe Innerspring Mattress
- Lift-Up Bed Platform w/Below Bed Storage
- Pillow Shams

- Sliding Underbed Storage Box
- Full Cedar Wardrobe w/Shoe Rack & Light

BATHROOM

- 12V Power Exhaust Vent
- 3-Bulb Lavy Vanity Light
- Bathroom Skylight
- Glass Shower Enclosure
- Marble Look Lavy Sink w/High Arch Faucet
- Marble Look Shower and Surround w/ Shower Massage and Soap Dish
- Medicine Cabinet w/Mirrored Door
- Porcelain Foot Pedal Toilet
- Removable Wire Basket (Select Models)

SAFETY/CONVENIENCE

- 120V GFI Circuit Protection
- 4-Wheel Electric Brakes
- 50-Amp Service w/Detachable Power Cord
- Carbon Monoxide Detector/Alarm
- Deep Tinted Safety Glass Windows
- Entry Step Light
- Fire Extinguisher
- Large Lend-A-Hand Assist Handle
- Mid-Coach Turn Signals
- Outside Security Lighting
- Propane Detector/Alarm
- Rear Center Brake Light
- Roadside Utility Light
- Roof Ladder
- Smoke Detector/Alarm
- Systems Monitor Panel
- Back-Up Lights

EXTERIOR – THROUGHOUT

- 120V Patio Receptacle
- Attic Vents - For Improved Moisture Control
- Black Tank Flush
- Aluminum Wheels
- Dual 30 lb. Split Tank Propane Cylinders w/ Regulator & Auto-Changeover
- Extended Pin Box & Wide-Stance Power Landing Gear w/Snap Jack Pins
- Exterior Washer with Pressurized Nozzle
- Fiberglass Front and Rear Cap
- Hitch Light
- Fully Enclosed Chassis w/Heated Holding Tanks
- Patio Awning

- Cable TV/ Satellite Hook-Up
- High Gloss Gel-Coated Fiberglass Exterior
- Shock Absorbers
- Stabilizer Jacks
- TV Antenna
- Central Utility Compartment

Options

INTERIOR – THROUGHOUT

- 2nd 13,500 BTU A/C
- 32" LCD TV
- Anderson Walnut Interior
- Plantation Cherry Interior
- Booth Dinette
- Central Vacuum
- Comfort-Air® Power Roof Vent
- Dual Pane Windows
- Safe Box
- Washer/Dryer Ready

LIVING ROOM

- Ceiling Fan
- Fireplace (Most Models)
- Luxurious Simulated Leather Recliner(s)
- Luxurious Simulated Leather Sleeper Sofa

BEDROOM

- Large Skylight w/Shade
- LCD TV

GALLEY

- 10 Cu. Ft. Double Door Refrigerator
- 12 Cu. Ft. Side-By-Side Refrigerator (Select Models)
- Half-Time Convection Over-the-Range Microwave

EXTERIOR – THROUGHOUT

- 5.5 KW Onan® Generator
- A&E® One-Step Power Awning
- Generator Ready
- Mor/Ryde™ Suspension & Pin Box
- Slide Room Awnings
- Spare Tire and Carrier
- Extreme Edition Package (Double Thickness Insulation in Floor & Ceiling w/ Astro-Foil™ on Slide Floor & Around Holding Tanks)
- Rear Power Stabilizing Jacks

Weights and Measurements

Weights

FIFTH WHEELS	315RKSA	325RKTS	335RKTS	355SAQS	355RLQS	365BHTS	365TSSA	375RLQS
GVWR (lbs) ¹	12,500	13,600	13,900	14,500	14,400	14,500	14,800	15,100
Gross Dry Weight (lbs) ^{2, 6}	10,173	11,050	11,464	11,720	11,860	11,585	N/A	12,080
Cargo Carrying Cap (lbs) ^{3, 6}	2,327	2,550	2,302	2,780	2,540	2,915	N/A	3,020
Hitch Dry Weight (lbs) ^{2, 6, 8}	2,424	2,155	2,315	2,467	2,085	2,055	N/A	2,010

Dimensions & Capacities

FIFTH WHEELS	315RKSA	325RKTS	335RKTS	355SAQS	355RLQS	365BHTS	365TSSA	375RLQS
Length (Feet & Inches) ^{4, 6}	34' 11"	35' 11"	37' 11"	37' 8"	37' 11"	39' 10"	38' 3"	39' 10"
Height (Feet & Inches) ^{5, 6}	12' 6"	12' 6"	12' 6"	12' 6"	12' 6"	12' 6"	12' 6"	12' 6"
Fresh Water Holding Tank (gal) ^{6, 7}	65	65	65	65	65	65	65	65
Grey Water Holding Tank (gal) ^{6, 7}	80	80	80	80	80	80	80	80
Black Water Holding Tank (gal) ^{6, 7}	40	40	40	40	40	40	40	40
Propane Capacity (lbs) ^{6, 7}	60	60	60	60	60	60	60	60
Tire Size (Load Range)	ST235/ 80R 16D	ST235/ 80R 16D	ST235/ 80R 16D	ST235/ 80R 16D	ST235/ 80R 16D	ST235/ 85R 16G	ST235/ 80R 16D	ST235/ 85R 16G

- GVWR (Gross Vehicle Weight Rating) is the maximum permissible weight of this trailer when fully loaded. It includes all weight at the trailer axle(s) and tongue or pin.
- All dry weights are based on the standard model and do not include optional features or equipment.
- Cargo Carrying Capacity is determined by subtracting Gross Dry Weight from GVWR. Cargo includes all fluids, optional features, equipment, and personal cargo.
- Length measured from hitch or pin box to rear bumper (excludes accessories). Trailer length includes hitch; fifth wheel includes standard pin box.
- Actual height may be lower, based on option offerings. Consult with your dealer to obtain actual height for the unit you are interested in.
- Approximate.
- Water weight equals 8.3 lbs per gallon. Propane weight equals 4.2 lbs per gallon.

- Hitch weights are dependent upon how the trailer is equipped with options, on-board cargo and tank fluid levels. Actual hitch weights may be higher or lower than shown. It is recommended that the tow vehicle and hitch for your trailer have sufficient capacity to accommodate the GVWR of the selected trailer.

N/A = Not available at the time of printing.

IMPORTANT— PLEASE READ: Product information, photography and illustrations included in this publication were as accurate as possible at the time of printing. For further product information and changes, please visit our website at www.fleetwoodrv.com or contact your local Fleetwood dealer. Prices, materials, design and specifications are subject to change without notice. All weights, fuel, liquid capacities and dimensions are approximate. Fleetwood has designed its recreational vehicles to provide a variety of uses for customers. Each vehicle features optimal seating, sleeping, storage and fluid capacities. The user is responsible for selecting the proper combination of loads (i.e., equipment, fluids, cargo, etc.) to ensure that the vehicle's capacities are not exceeded.

Why Regal?



QUALITY

There's no cutting corners. Skilled craftsmen build every Fleetwood RV for maximum durability and longevity.



WARRANTY

Exclusive RV Ownercare warranty. See your Fleetwood dealer for details.



PASSION

We're truly passionate about the RV lifestyle. Fleetwood was founded by RV enthusiasts, and that tradition continues today.



SERVICE

Help is nearby. When you need an upgrade or repair, you'll find facilities all across North America and more than 1,100 dealers ready to assist you.



TRUST

More people trust Fleetwood. After all, we've spent over 50 years perfecting RVs, earning the loyalty of generations of RVers.

CONTACT US

To locate a dealer near you, visit our website at www.fleetwoodrv.com or call 1-800-444-4905. We can also be contacted at Fleetwood Customer Relations, P.O. Box 1007, Decatur, IN 46733.

FLEETWOOD TRAVELCADE CLUB

As a Fleetwood owner, you're eligible to become a member of the Fleetwood Travelcade Club. It's a perfect way to meet other Fleetwood owners who love to travel across America and share in the RV lifestyle. Call (877) 577-2560 or visit our website at www.fleetwoodrv.com/owners_clubs to learn more and join the fun!

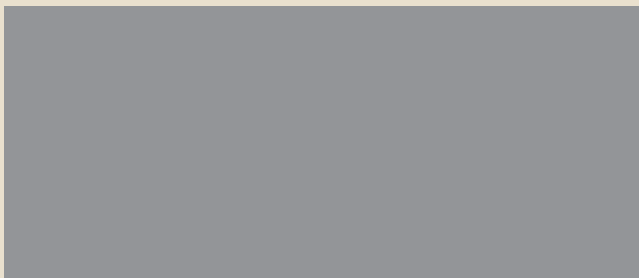
RV OWNERCARE

See your local dealer for complete details.

IMPORTANT—PLEASE READ

Product information, photography and illustrations included in this publication were as accurate as possible at the time of printing. For further product information and changes, please visit our website at www.fleetwoodrv.com or contact your local Fleetwood dealer. Prices, materials, design and specifications are subject to change without notice. All weights, fuel, liquid capacities and dimensions are approximate. Fleetwood has designed its recreational vehicles to provide a variety of uses for customers. Each vehicle features optimal seating, sleeping, storage and fluid capacities. The user is responsible for selecting the proper combination of loads (i.e.: equipment, fluids, cargo, etc.) to ensure that the vehicle's capacities are not exceeded.

Your Local Fleetwood Dealer Is:



TO OUR CUSTOMERS...

To make sure that you get the maximum satisfaction out of your recreational vehicle purchase, there are several things you should know:

1. Learn all you can about the travel trailer or fifth wheel you're planning to buy. Don't rely on word of mouth. Get the facts about the actual trailer length, width, unloaded weight with options, Gross Vehicle Weight Rating, and Cargo Carrying Capacity. These are usually available in the manufacturer's sales literature or from the Cargo Carrying Capacity Label located in each trailer. Be sure to check this information before you decide which unit to buy.
2. Verify the towing capacity of your tow vehicle. If you don't know, or aren't sure, you can ask at your automotive dealership. Be sure to match its tow rating to the loaded (not dry) weight of your trailer. Include the weight of water, additional accessories, clothing, food, and gear. To help Fleetwood travel trailer customers estimate this total weight, our Gross Vehicle Weight Ratings reflect the maximum weight of the trailer when fully loaded for camping. Be sure the weight of the tow vehicle plus the weight of your trailer do not exceed the Gross Combined Weight Rating of the tow vehicle.

Taking these simple steps before you buy will help ensure that your trailer and tow vehicle combination is just what you wanted.

See you on the trail!

tread lightly!
LEAVING A GOOD IMPRESSION



FLEETWOOD
Travel Trailer Division