



*American Coach*

THE OFFICIAL LUXURY COACH OF THE AMERICAN ROAD

2 0 0 8   A M E R I C A N   E A G L E



AMERICAN EAGLE





ENOUGH TO  
MAKE THE  
SCENERY BLUSH.

One glance at the bold, alluring new Talon graphics package or the fully integrated, roof mounted awnings and we think you'll agree that this is a coach so eye-catching, even the sunset pales in comparison. Each carefully selected detail redefines the concept of luxury and showcases stunning innovation. That's the essence of the 2008 American Eagle.

From the curvaceous new front cap, to the integrated key pad designed for easier entry, the new Eagle represents the utmost in contemporary style and engineering.

Stunning from every angle, The American Eagle invites you to discover the true meaning of freedom. Take flight.



American Eagle 45E shown in Cabernet Gold with Talon graphics. (Also available in Wingspan graphics.)

ABSOLUTE COMFORT:  
ALWAYS ON THE  
ITINERARY.

Whether you're in the driver's seat or simply savoring the ride, the American Eagle charts a course for luxury. Experience the R5000 Info Center which combines radio, CD player, ipod hook-up, GPS navigation, and rear vision monitoring in one user friendly system. Enjoy the ultimate bird's eye view with the Eagle's newly redesigned, low-profile dash, uniquely configured for maximum road visibility.

Relax in a large, wraparound dinette with convenient, hidden storage area. Sleep like a baby under a cooling ceiling fan in the deluxe master bedroom. Whatever you choose, you'll be doing it all beneath incredibly high 84 inch ceilings and in posh surroundings fitting of a five-star resort.

The American Eagle gives you limitless luxury. So wherever the road leads, satisfaction is sure to follow.

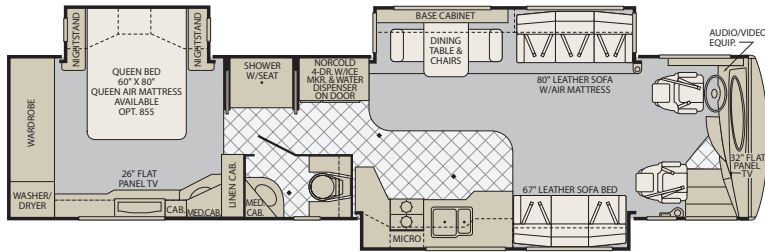


AMERICAN EAGLE

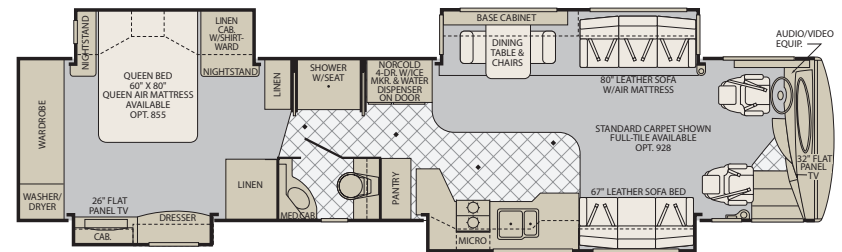


American Eagle 42F shown in Coconut Creme with Natural Cherry wood cabinetry and optional Villa furniture.

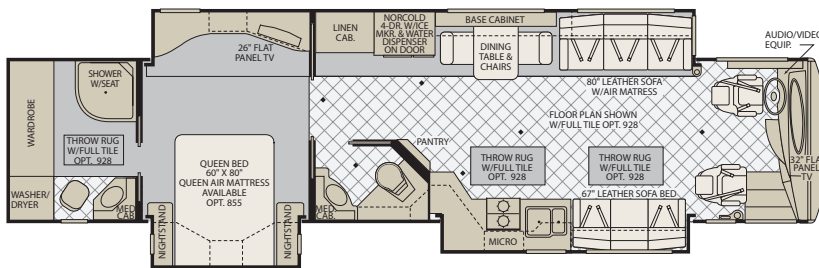
40 J



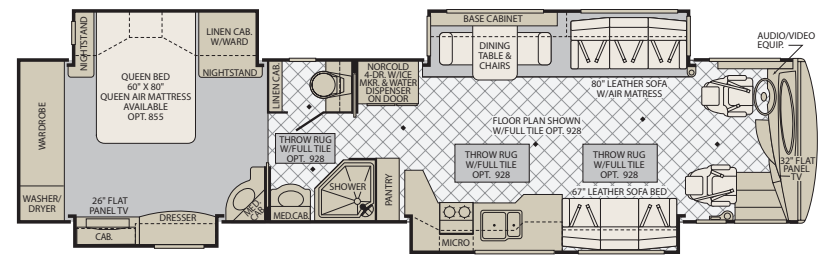
42 L



42 F



42 R



**FEATURES – INTERIOR**

**GENERAL AMENITIES**

- Decorative Wood Window Treatments
- Solid Wood Face Framed Cabinetry
- Decorative Ceiling and Air Plenum
- Polished Porcelain Tile Floor with Décor Accents at Entry, Galley and Bathroom
- Fan-Tastic® Fan Rain Sensor Vents (3)

**DRIVER CONVENIENCE**

- Navion®/R5000 Information and Entertainment Center; AM, FM, Single CD, MP3, Camera Monitor w/One Way Audio
- Dash Storage with Corian® Top
- 6-Way Power Driver Seat (Leather)
- 6-Way Power Passenger Seat (Leather)
- Sirius Satellite Radio (6 Month Subscription)
- Sony® Rear and Side View Cameras
- Smart Wheel w/Leather & Burl Wood Trim
- Top Mounted Intermittent Windshield Wiper System with Wet Arm
- Power Driver Window
- One Piece Windshield Bonded to Steel
- Denso® Dash Climate Control System

- Adjustable Brake & Throttle Pedals
- Low Profile Automotive Style Dash
- Keyless Entry Door Access w/Key Fob

**LIVING ROOM**

- Hydraulic Step Well Cover
- Centralized Command Center
- Automatic Generator Start System
- Border Trim Area Rugs (w/Full Tile Option)

**GALLEY**

- Countertop "Non Drip" Edge Treatment
- Solid Surface Double Bowl Galley Sink
- Tile and Venetian Glass Backsplash
- Solid Hardwood Drawer Fronts
- Roller Bearing Drawer Guides, Full Extension

**BEDROOM**

- Recessed Bedroom Ceiling Fan
- 30" Deep Bedroom Slides
- Queen Innerspring Pillow Top Mattress
- Full Length Rear Wardrobe

**BATHROOM**

- Polished Solid Surface Lavvy Countertop w/Solid Surface Sink and Residential Faucet

- Tile and Venetian Glass Backsplash
- Color Coordinated Fiberglass Shower, w/Molded Seat-Shelf (Select Models)
- Obscure Decorative Shower Glass Enclosure
- Residential China Bowl Flush Toilet
- Residential China Bowl Vacuum Flush Toilet (Rear Bath, Select Models)

**FURNITURE**

- Exclusive Design, Flexsteel® Furniture
- Flexsteel® Leather Sofa Hide-a-Bed
- Flexsteel® Leather Sofa Bed
- Solid Surface Extending Dinette Table, 2 Decorative Chairs, 2 Folding Chairs
- Dinette with Base Cabinet Storage

**APPLIANCES**

- GENERAL**
- Washer/Dryer (Vented)
- BEDROOM**
- Sony® 26" LCD HDTV
  - Bose® 3-2-1 Home Theater System
  - Direct TV® HD, Digital Satellite Receiver
- GALLEY**
- GE Advantium® Convection Microwave Oven
  - Norcold® 12 cu. ft. 4 Door Refrigerator

**LIVING ROOM**

- Sony® 32" LCD HDTV
- Direct TV® HD, Digital Satellite Receiver
- TracVision® R5 Series "In Motion" HD-DSS
- Bose® Lifestyle 18 Home Entertainment System

**HEATING & PLUMBING**

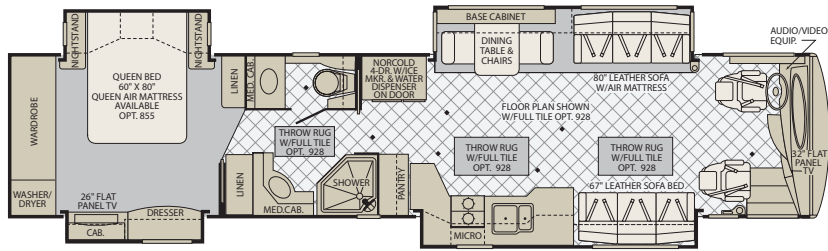
- Auto-Dual Stage High Efficiency Furnaces
- DSI 10 Gallon Water Heater 120V/Propane
- Dual 15.0M Low Profile Roof Air Conditioners, (3) AC's on 42' - 45' Models
- Heat Pump on Rear AC Unit

**SAFETY**

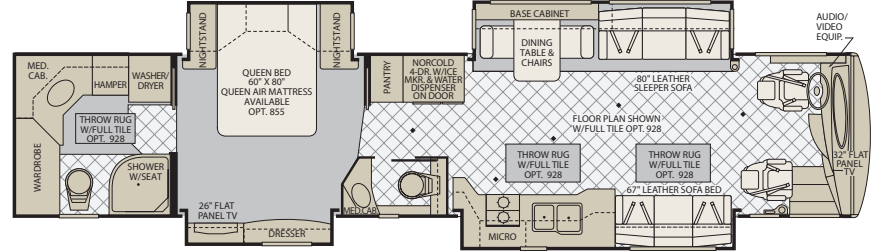
- Smoke Detector/Alarm
- Carbon (CO) Monoxide Detector/Alarm
- Fire Extinguisher
- Propane (LP) Leak Detector/Alarm
- Momentary Courtesy Lighting at Entry
- Lighted Exterior Grab Handle with Logo

Not all available options are shown. See your American Coach dealer or visit our website at [www.AmericanCoach.com](http://www.AmericanCoach.com) to see all available options. Seatbelt configuration may vary depending on options chosen.

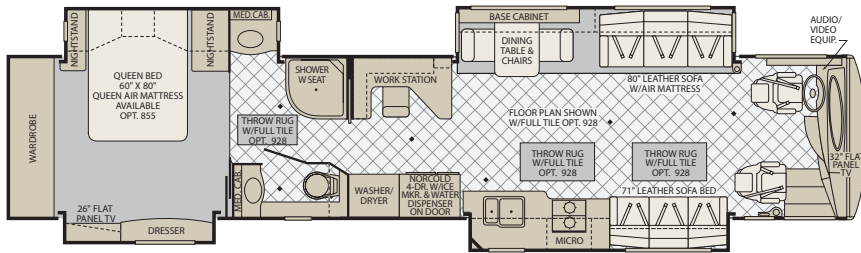
42 V



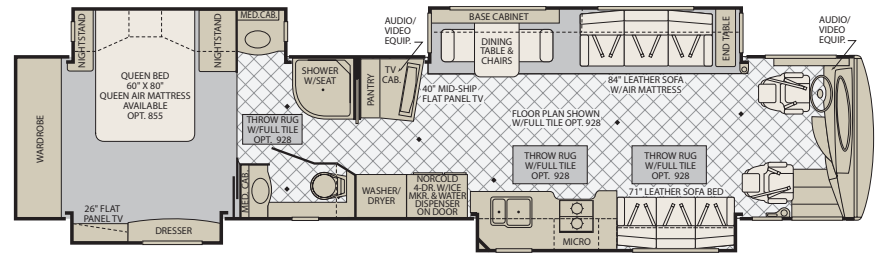
45 E



45 D



45 H



## FEATURES – EXTERIOR

### CHASSIS/ENGINE

- Liberty Chassis w/E-Coated Platform
- Allison® 3000 MH, 6-Speed Transmission (w/425 HP Engines)
- Allison® 4000 MH, 6-Speed Transmission (w/500 HP Engines)
- Independent Front Suspension
- 295/80R LRH 22.5" Radial Tires
- Automatic 4-Point Hydraulic Leveling System
- Trailer Hitch Receiver 15,000 lbs.

### CONSTRUCTION

- Electro-Coated Heavy Duty Steel Framing
- Interlocking Aluminum Framing
- Vacu-bond® Walls, Roof and Floor
- 5 Layer Flooring with 3" Insulation
- 6 Layer Roof with 6 1/2" Bead Foam Insulation (at Centerline)
- Dupont® Automotive Paint (Cut and Buff)
- One-Piece Fiberglass Roof

### GENERAL AMENITIES

- Diamond Shield Protective Front Mask
- 2800-Watt Pure Sine Wave Inverter/Charger
- (4) Absorbed Glass Mat 6- Volt Batteries
- Electrical System Protection
- Chrome "Bus Style" Heated Mirrors
- Sensa Tank Level Monitoring System
- Power Cord Reel, 50 AMP
- Full Width Rear Rock Guard
- Solar Charging Panel (65w)
- Power Luggage Door Locks w/Key Fob
- Keyless Entry Touch Pad/Entry Handle
- Power Double Entry Step "Bus Style"

### APPLIANCES

- Onan® 7.5kW Quiet Diesel Generator (40')
- Onan® 10.0kW Quiet Diesel Generator

### WINDOWS/ AWNINGS/DOORS

- 30" Avionics Front Entry Door w/Air Latches

### OPTIONS - INTERIOR

- Stacked Washer/Dryer (Select Models)
- Sony® 32" LCD HDTV
- Dometic® 14 cu. ft., SideWise Refrigerator
- Residential Refrigerator, French Door Style,

- 20 Cu.Ft with Icemaker

- Dishwasher
- Central Vacuum System w/Accessory Kit
- Sony® 26" LCD HDTV (Front - 45H)
- Sony® 40" LCD HDTV (Standard 45H)
- Digital Video Recorder
- 6-Way "Spacious" Seat (Flexsteel-Leather)
- Sony® Passenger GPS Monitor
- Vorad, Collision Avoidance System
- Pressure Pro®, Tire Pressure Monitor
- Garmin® Navigation System
- Flexsteel® Leather J-Love Seat
- Extended Sofa/Mod.Galley (Select Models)
- Villa Furniture Package
- Dinette Face to Face Leather Wrap Around Ensemble (Flexsteel or Villa)
- AquaHot Heating, 50M BTU (Std on 42F,45E)
- Heated Full Tile Floor
- 10 Gallon High Output Water Heater (16 Gal. Heat Equivalent)
- Premium Glaze Wood Finish
- Custom Interior Request
- Second Bedroom Vanity (Select Models)
- King Bed with Pillow Top
- Select Comfort Queen Air Mattress
- Select Comfort King Air Mattress

- Linen Cabinet and Drawers (Select Floor Plans)
- Full Tile Flooring (Select Models)
- Canadian Standards Build (Select Models)
- Factory V.I.P. Delivery

### OPTIONS - EXTERIOR

- Exterior Entertainment Center with Easy
- Exterior Entertainment Center
- 2000-Watt Pure Sine Inverter / Charger, (4) AGM Batteries
- 2 Girard Awnings, Door Side Package
- 4 Girard Awnings Package (Select Models)
- Spartan® MGMT, Modular Chassis System w/Cummins ISL 425HP (40' - 42' Models)
- Spartan® K2, Modular Chassis System w/Cummins ISM 500HP (42' - 45' Models)
- Automatic 4-Point Dual Leveling, Air and Hydraulic
- Power Water Hose Reel
- Power Cord Remote (Key FOB)
- 1st Full Bay 90" Slide Tray
- 1st Full Bay 36" and 54" Slide Tray
- 2nd Full Bay 90" Slide Tray
- 2nd Full Bay 36" and 54" Slide Tray
- 2nd Full Bay 54" Slide Tray w/AquaHot System
- Waste Management System (Macerator)

# INTERIOR DÉCORS\*

AMERICAN EAGLE



Silver Slate



Brushed Hazel



Spicy Nutmeg



Crème Brulee Glaze Maple



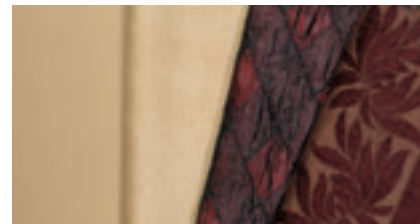
Regency Cherry



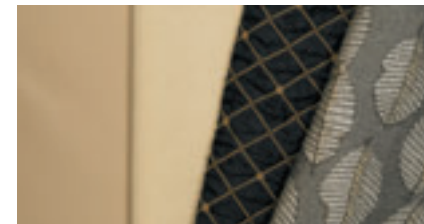
Natural Cherry



Coconut Cream



Sovereign Port



Midnight Onyx



\* Interior décors and/or woods may be subject to change. Printed fabric samples above are close representations of actual fabrics and may be limited to standard printing technology. For actual samples, see your American Coach dealer.

©2007. Fleetwood Enterprises, Inc.  
Printed in the USA. Inventory Control Number AE08F1, 5/07.  
Model Year 2008, First Edition.

For more information, visit us at  
[www.AmericanCoach.com](http://www.AmericanCoach.com) or call us toll  
free at 800.854.1344

THE OFFICIAL LUXURY COACH  
OF THE AMERICAN ROAD



#### IMPORTANT—PLEASE READ

Product information, photography and illustrations included in this publication were as accurate as possible at the time of printing. For further product information and changes, please visit our website at [www.AmericanCoach.com](http://www.AmericanCoach.com) or contact your local American Coach dealer. Prices, materials, design and specifications are subject to change without notice. All weights, fuel, liquid capacities and dimensions are approximate. American Coach has designed its recreational vehicles to provide a variety of uses for customers. Each vehicle features optimal seating, sleeping, storage and fluid capacities. The user is responsible for selecting the proper combination of loads (i.e. occupants, equipment, fluids, cargo, etc.) to ensure that the vehicle's capacities are not exceeded.